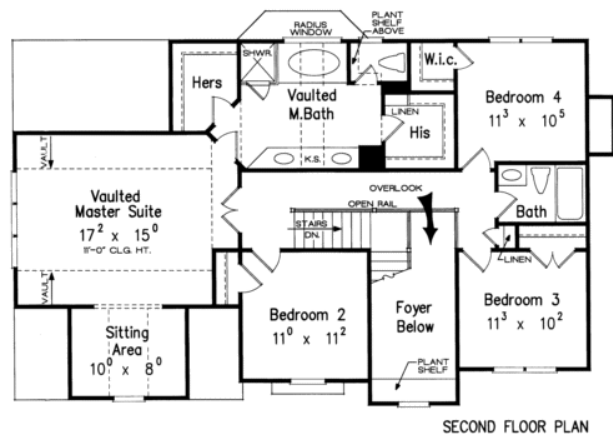
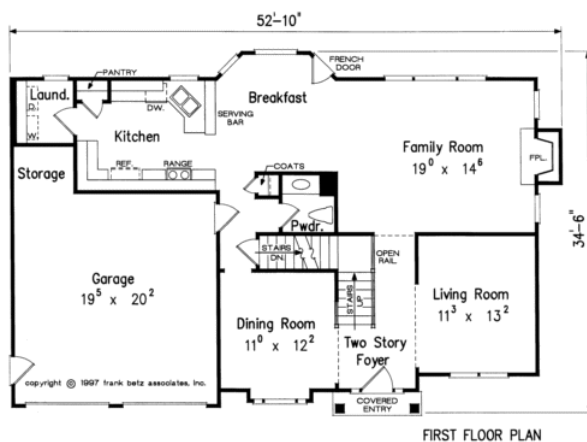


MARK

5

Construction, Inc

Louisville



- 2345 SF
- 2 Car Garage
- 4 BR/ 2.5 Baths
- MBR 2nd flr
- Full Basement

**Pricing subject to location and options.
Please contact sales manager for details.**

12701 Branch Ave, Brandywine, MD 20613
Ofc: 301-372-3650
Fax: 301-372-3654
Toll Free: 1-800-818-0820
www.mark5const.com
info@mark5const.com
MHBR No3855

Floor plans and elevations are subject to change. Floor plan and dimensions are approximate. Elevation are Artist's renditions only. Please consult agent for details.

