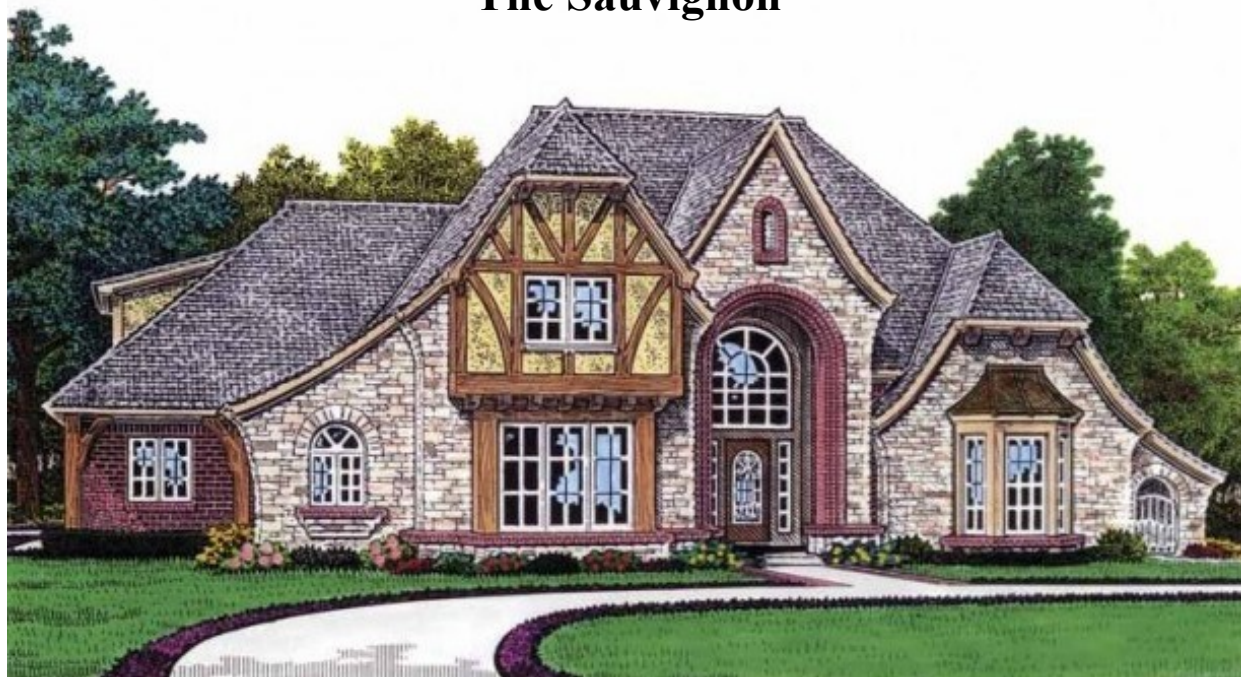


MARK

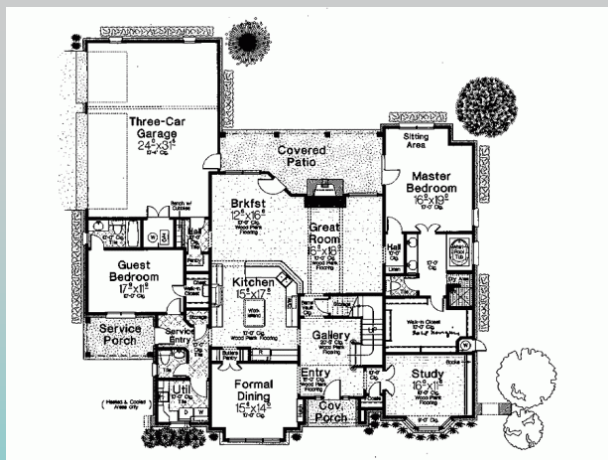


Construction, Inc

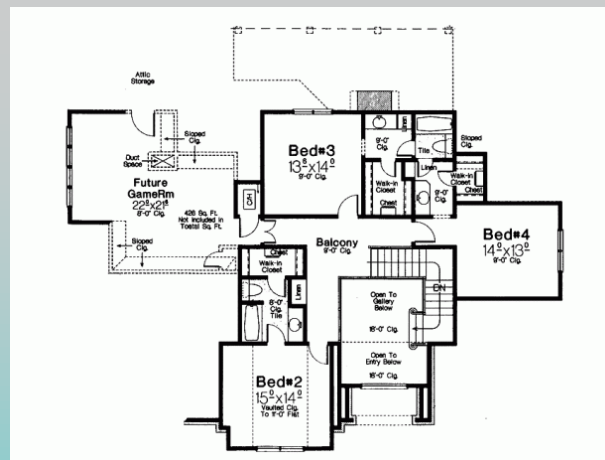
The Sauvignon



First Floor Plan



Second Story Floor Plan



- 4284 SF
- 3 Car Garage
- 4 BR/ 4 Bath 2 half
- 9' Basement w/ full bath
- Full Basement
- MBR 1st flr

12701 Branch Ave, Brandywine, MD 20613
Ofc: 301-372-3650
Fax: 301-372-3654
Toll Free: 1-800-818-0820
www.mark5const.com
info@mark5const.com
MHBR No3855

**Pricing subject to location and options.
Please contact sales manager for details.**

Floor plans and elevations are subject to change. Floor plan and dimensions are approximate. Elevation are Artist's renditions only. Please consult agent for details.

