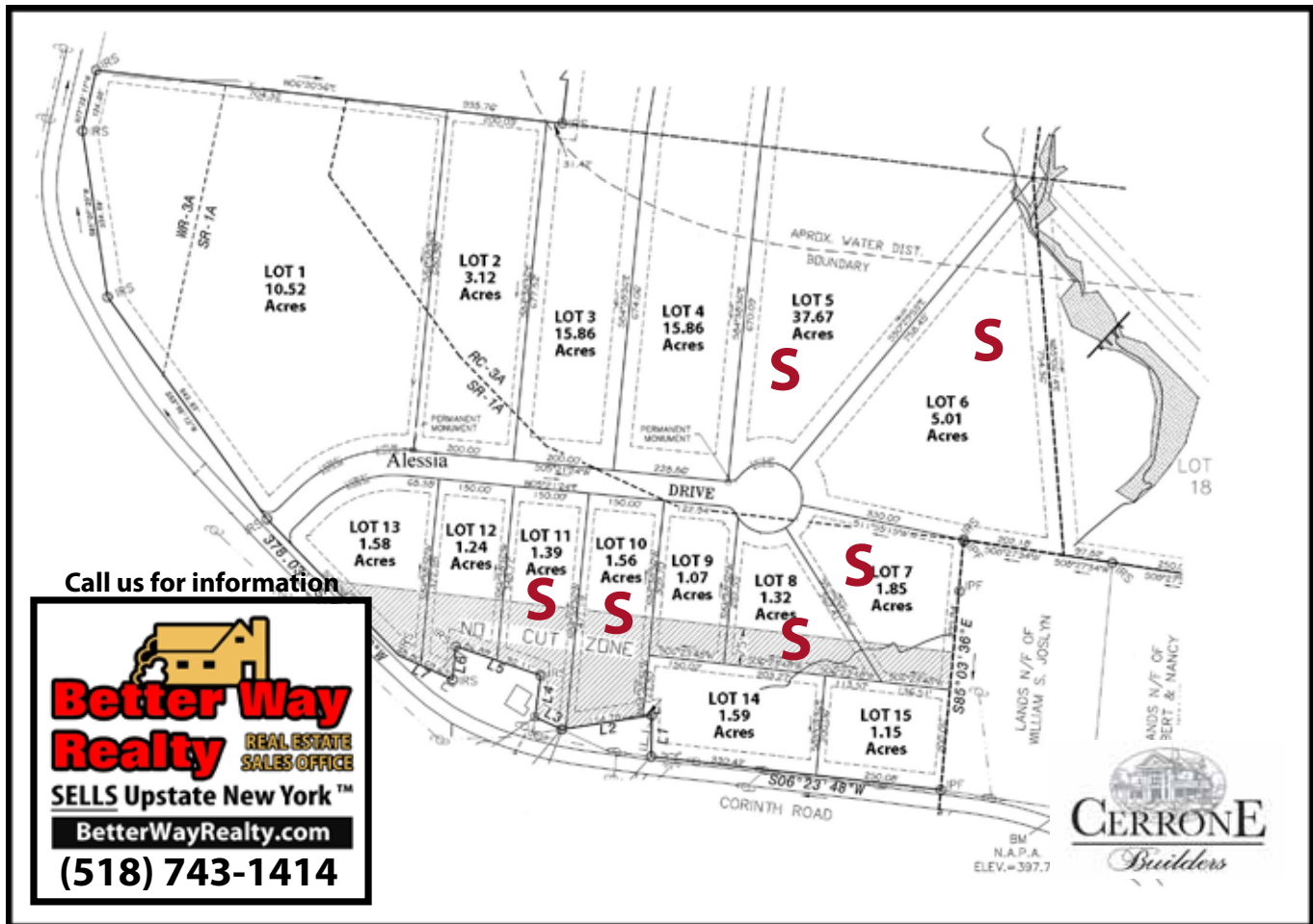


# Welcome Home to West Mountain Estates Phase II



**DIRECTIONS:** Exit 18W, Go LEFT onto Corinth Rd, at 1/2 mile past West Mountain Rd, take RIGHT onto Alessia Dr.



Open concept ranch plans



Open concept two-story plans



Ranch w/side entry garage

Nestled in the foothills adjacent to the West Mountain Ski Center is an enclave of (14) premium, huge, private building lots that comprise West Mountain Estates (Phase II). Each homesite is positioned for maximum privacy and mountain views. Several lots can accommodate side entry garages and walk-out basements. Customize one of our popular, open concept floorplans, or bring us your own floorplan.

## Customize Your Favorite Floorplan with These Interior & Exterior Features

- Many 1 & 2 Story Open Concept Floorplans to Choose
- 1,400 to 2,500 sq. ft. Living Space Plans + Full Basement
- 2 Car Attached Garage
- Stainless Steel Appliance Package
- Deluxe Closet Maid Shelving Systems
- Garage Wide Paved Driveways to the Road
- Large Wooded Lots
- Energy Efficient Natural Gas Heating & Central Air

- Carriage Style Garage Doors
- Kraft Maid Maple Cabinetry with Upgraded Crown Molding
- Granite Kitchen Countertops
- Single or Double Undermount Sink
- Ceramic Tile Bathroom Flooring
- High Performance Water Closet & Easy Care Shower Units
- Deluxe Upgraded Exterior & Interior Lighting Package

Prices and specifications subject to change without notice.