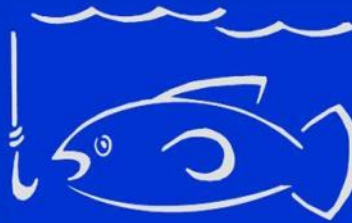


BuyHartwellLake

llc



1-855-BUY-LAKE



December 2017

Email your pictures of Hartwell to HartwellLakefront@gmail.com.
One will be selected every month for our cover.

1573 Currahee Club Toccoa GA \$124,000 - You're sure to fall in love with this golf and lake community nestled in the North Georgia Mountains as soon as you pull up to the gated entrance. You'll wind through Currahee Club's beautifully landscaped grounds past the Amenity Center with pool, tennis courts, fitness center, basketball courts, playground, community garden and more. To the right you'll see their magnificent 48,000 square-foot mountain top clubhouse with panoramic views of three states. The centerpiece of this community is the 18-hole Jim Fazio designed golf course featuring rolling fairways, dramatic elevation changes and generous sloping greens.



Lot E McAlister Townville SC \$160,000 - Deep sailboat waters, great views, gentle slope and super location near I-85, Anderson, and Portman Marina. Short boat ride for gas and lakefront restaurants. This beautiful property is ideal for your full time home or weekend getaway. Lot extends to the other side of the road, could be used for boat storage, workshop, etc. Lot immediately to the left has been fully cleared and some of this lot has been cleared on the left hand side for easy walking. Past verbal approval from corp for max size dock.



720 Dogwood Lane Townville SC \$175,000 - You will not be disappointed when you see this little lake deal. Neat as a pin and situated on 2 lots. Includes 3 bedrooms and 1 1/2 baths. A screened porch is right off the main living area. The third bedroom is off the porch. Nice size shed to front of home. No access to this shed/workshop unless serious buyer. Gentle slope to a covered slip dock with light pole at dock. Per owner 15' at dock at full pool. Owner installed all new windows this year. Roof, HVAC, oven and microwave installed 2009.



121 Early Rd Hartwell GA \$155,320 - Organic 2.85 Acre Farm near Lake Hartwell. Geo Dome Greenhouse, 8' deer fencing surrounding property and irrigation throughout entire property. A variety of fruit trees, blueberries, crimson clover and muscadines producing this summer. Well-suited for honey bees. Located off Reed Creek Hwy in Hartwell, it includes a 2BR/1BA 1.5 story home built in 2010 with an open floor plan. Nicely finished inside with a huge great room, wood-looking tile floors, kitchen with stainless steel refrigerator, range/oven and a commercial-size industrial sink for prepping produce. Easy-care exterior with Hardi-Plank siding and metal roof. Work in your garden, cool off in the lake - boat ramp is just 4 miles away.



Lot 88 North Foxglove Westminster SC \$16,000 - Beautiful golf course lot in a gated lakefront neighborhood. Great scenic building site with wonderful fairway views. Located just 5 minutes from I-85. Subdivision has a playground, pool, golf course, tennis courts, dog park, clubhouse, beach with swimming area and a boat ramp.



Q&A With The Corp Of Engineers

The Corps recently proposed a change to our understanding of actions it would take during Drought Level 4. What are the results of this Environmental Assessment?

In 2011 we evaluated the 1989 Savannah River Basin Drought Plan to determine if changes were warranted for operations in Drought Level 4: the inactive storage portion of reservoir water. Drought Level 4 occurs when the Hartwell reservoir is at or below 625 feet above mean sea level (ft-msl) or Thurmond reservoirs at or below 312 ft-msl.



The Savannah District, in conjunction with the public, and state and federal natural resource agencies, completed an Environmental Assessment (EA) addressing this issue in October 2011. This EA supports a Finding of No Significant Impact (FONSI) and clarifies actions to be taken in the unlikely event that drought conditions reach this unprecedented level. The primary focus of this EA was to clarify Drought Level 4 operations with the intent on preserving drinking water supply for the greatest population of basin residents.

The proposed Standard Operating Plan (SOP) for operations in Drought Level 4 retains all major components of the 1989 Drought Plan except for one. When Drought Level 4 conditions exist, the daily average release from Thurmond Dam would go to 3,600 cubic feet per second (cfs) and transition to 3,100 cfs with an adaptive management strategy during the period from Nov. 1 through Jan. 31. We would transition to a daily average outflow equals daily average inflow, if all the pools reach the bottom of their inactive storage. It's important to note that the Corps' drought management plan is designed to prevent the three-reservoir system from ever reaching Drought Level 4. The reservoirs have never reached Level 4.

Why did you spend time and money to update the level 4 actions, when you could have used that money to update the Drought Plan or work on the Savannah River Basin Comprehensive Study?

After the worst drought of record (2007 to 2009), we received Flood Control and Coastal Emergency (FCCE) funds to evaluate emergency drought operation plans. The FCCE monies were provided to the Savannah District to address a possible future drought even more severe than the one that ended in 2009. We are required to use the funds for that intended purpose only. The Savannah District expects to evaluate the entire drought plan in the next phase of the comprehensive study.

Why do the pools have a winter drawdown?

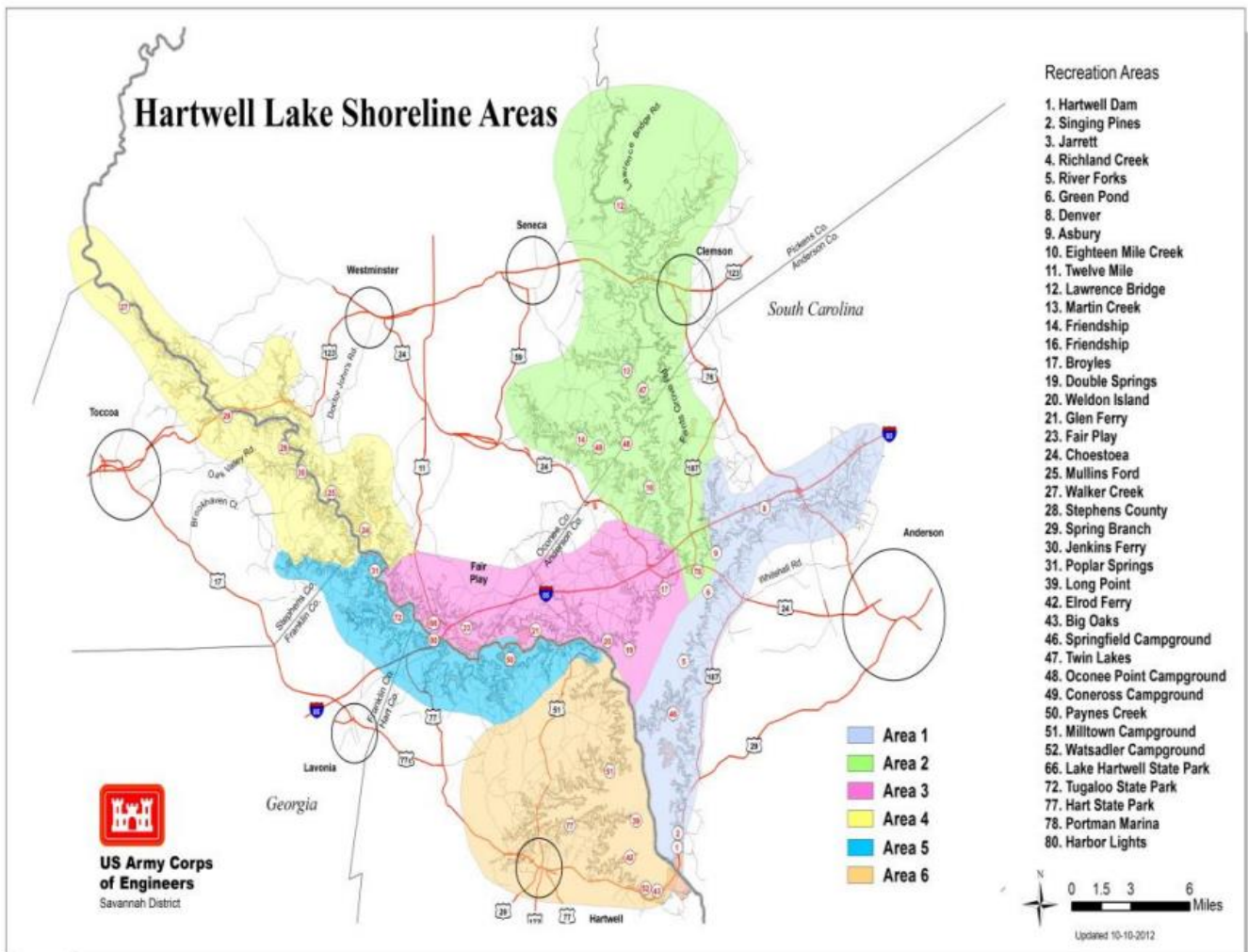
The top of conservation storage is also known as the guide curve. The guide curves on Hartwell and Thurmond decline after the summer season in anticipation of the spring. This reduction in the guide curves provides additional flood storage needed for typical winter and spring rains. This helps us reduce the risk of downstream flooding and helps fulfill one of the dams' authorized purposes of flood risk management. In most autumns the pools will naturally decline due to the seasonally dry weather. Maintaining the pools at or below the guide curves helps prevent shoreline erosion from the high winds common on the reservoirs in the winter. If the pools are already below the guide curves, there is no additional lowering required to ensure the designed level of safety.

Shoreline Management Program How to Apply for Permits

For general information concerning Shoreline Use Permits, or to apply for a permit, please contact the Hartwell Project Office, toll free at 888-893-0678. Members of the Hartwell staff are available to answer general questions, explain the permitting process, and/or arrange an on-site meeting to discuss permitting options.

Prospective buyers are encouraged to contact the Hartwell Dam and Lake Project Office prior to purchasing property adjacent to Hartwell Lake. Prior to calling, please have certain pertinent information readily available such as, the location and directions to the property in question (i.e. lot number, subdivision name, street address, etc.) and/or previously existing permit numbers or names of previous owners associated with the property in question. If an appointment with Hartwell staff is desired, please call approximately 2 weeks in advance of the time you wish to meet, as staff are generally "booked" for at least two weeks.

See below for your rangers extension,
Area 1, ext. 351 Area 2, ext. 336 Area 3, ext. 352
Area 4, ext. 332 Area 5, ext. 311 Area 6, ext. 347



Boating Destinations on Lake Hartwell

- **Issaqueena Dam.** To find the Dam head north on the Keowee River, past Clemson, and you will take a right turn into this "magical cove" that contains a waterfall. It is about 25 feet tall and 150 feet wide overflow out of Lake Issaqueena into Lake Hartwell. Many people will drive or park their boats and hike around this area on a pretty day.
- **Eighteen Mile Creek.** Eighteen Mile Creek is not quite eighteen miles long, but it is a nice curvy and narrow waterway. It is off of the Seneca River at buoy marker S-42. It is well known for among fishermen and birds. The curvy waterway goes for about five miles and ends in a big shallow area and an old bridge with lots of birds and wildlife
- **Rock Quarry.** There are several overhanging rocks to leap from. The heights of the rocks vary with the changing lake levels. Some areas within this cove are shallower than others so be careful when jumping off the rocks. Located near Clemson Bouy S-78
- **Ghost Island.** This is the largest island, heading toward Portman Marina from Oconee Point. When looking at the island search for the highest point, you can simply look for the tallest trees on the center of the island. Start hiking to this point and you may find as many as fifty grave headstones. Many of the stones are very small and cannot be read due to age and years of weather. There are several tomb-like, above ground concrete vaults with markers identifying the graves from the War of 1812. There are also graves from the 1700s. The area in which it is located looks like it could have been an old home place or church but the only thing left was the graves. Many people camp on this island unaware of their "company"
- **Andersonville Island.** Andersonville, SC was once a well-known port and resort town with a barge system that traveled daily to Savannah GA. For many years this town flourished and had many businesses, factories, and tourists that would come from all around. Andersonville was said to be as large as Anderson or Pendleton SC, but all that is left is a large island nearly 400 acres in size. It is by far the largest island on the lake, between two and three miles long. It has a paved road that stretches from one side to the other but is grown over now. On the island one can find anything from building ruins, to artifacts, to rare plants and wildlife.





Hike or Bike Issaqueena Lake trail by Lake Hartwell



Water flowing from Issaqueena
Dam into Lake Hartwell

This trail is the most popular ride at Issaqueena Lake, and for good reason. The extremely fast singletrack combined with the scenic miles along the lake make an excellent ride. Before you begin this loop, spread out a picnic on one of the tables at the recreation area and take some time to appreciate this rehabilitated forest. While relatively flat, this singletrack requires a moderate degree of technical skill, which is why this stretch is used by the Clemson Cycling Club as part of a race course. Slow down when you reach the lake to wind in and out of the lakeside coves. Early morning fog often hangs above the water— a spectacular scene in autumn. Tread: Singletrack with a .6 mile on old roadbed.

Dir:Hwy 123 from Clemson to Hwy 133 and continue approximately 3 miles, turn left onto Old Six Mile Rd. and continue for about 2 miles and take a left into the parking area.

For more details and maps visit: <http://clemsontrails.blogspot.com/p/botanical-gardens.html>



Visit our Lake Hartwell Informational site!

LakeHartwellLiving.com

Interested in activities on and around Lake Hartwell? LakeHartwellLiving.com highlights current lake activities, events and news. You will find information concerning the corp of engineers, permit information and contact numbers for all the local service providers you may need. Also included are links to surrounding activities such as golf courses, waterfall hikes, campgrounds marinas



Testimonial 402 Dogwood Fair Play SC



Well, what can we say about Don Cleveland? If you want someone who is friendly, confident and knows the area Dons your Man!!!! Don, can help you with all your real estate questions and find you the perfect place. There doesn't seem to be any obstacle he can't overcome and we are sure if he couldn't he knows someone who can!

Gail and Wayne MacDonald

Get Hooked On Lake Hartwell!!!

Fishing, Golfing, Boating, Water Skiing, Relaxation!



BuyHartwellLake llc



1-855-BUY-LAKE

www.BuyHartwellLake.com

*"If We Don't Take Care of
Our Customers, Somebody
Else Will!"*



BuyHartwellLake, LLC Cordially Invites You To Join Us At:

The Atlanta Boat Show

January 18-21, 2018

**Atlanta World Congress Center, Hall C,
280 Northside Drive, NW, Atlanta, GA 30314**

Show Hours:

Thursday & Friday	January 18 & 19	11:00AM - 9:00PM
Saturday	January 20	10:00AM - 9:00PM
Sunday	January 21	10:00AM - 6:00PM

NEED TICKETS?

Call us Today

(855) BUY LAKE

We Have A Limited #

**Note: Our Clients Will be
Given "First Dibs" on
Available Tickets.**

NOW IS THE TIME TO LIST YOUR PROPERTY TO BE FEATURED AT THE SHOW

- We participate in the Atlanta Boat Show event many Lake Hartwell Property Buyers are from Atlanta!
- Normally we are the only SC Real Estate Company that participates
- Potential buyers will have access to all of our listings as they visit our booth!
- If your property is listed with us at the time of the show, congratulations. It will be featured at the show!
- Are you thinking about listing your property? Now is the time. Don't Miss This Opportunity!
- Call 1-855-BUY-Lake or (864) 225-2410 To List Your Property Today!

BUY HARTWELL LAKE, LLC IS THE PREMIER LAKE HARTWELL REAL ESTATE COMPANY IN

NORTH GA & UPSTATE SC

Selling luxury custom homes, condos, cabins, cottages, homes, and lake lots!

A Style and Price Range for Every Buyer!!!

HARTWELL LAKE LIVING PROVIDES AN UNSURPASSED LIFESTYLE!

Great People, Lots of Things To Do, Super Weather, In an Awesome, Convenient Location!!!

IF YOU'RE LOOKING TO BUY OR SELL, CALL THE BEST—BUY HARTWELL LAKE! (855) BUY-LAKE

Download the Lake Hartwell App



Search no further than your pocket (or purse) to access real-time data on reservoir levels, rainfall, outflows, forecasts and other useful information on our lake projects and the Savannah River.

The U.S. Army Corps of Engineers Savannah District announces the launch of a new mobile app, now available for free download via the iTunes App Store, Google Play and the Amazon app store. To download, simply search for “USACE Savannah” from the app store compatible with your mobile device.

The app is also available online via a desktop version at <http://usacesavannah.mobapp.at>

We designed the app to provide the most in-demand information on lakes Hartwell, Russell and Thurmond, as well as river conditions downstream. We made conscious efforts to develop an application that was easy to use from

any mobile device, making desired content no more than two clicks away. The idea is to provide quick and convenient access from any location; whether on a boat, camp site or in a restaurant.

The app pulls current data from the district’s water management database, but repackages the most frequently-accessed content for easy viewing on smaller screens characteristic of mobile devices.

We’re always looking for ways to make our products better. If while using the app you have ideas on how it might be improved, please don’t hesitate to let us know. We welcome your comments and feedback.

~Russell Wicke, corporate communications officer

Green Pond Dock Expansion Planned

Anderson County is pleased to announce it has been awarded \$650,000 in Sports Fish Restoration Act Funding from the U.S. Department of the Interior's Fish and Wildlife Service. The money will be used to expand and enhance the existing dock facilities at Green Pond Landing and Event Center on Lake Hartwell. This is the second major Sport Fish Restoration Fund grant awarded to Green Pond by the Fish and Wildlife Service.

Green Pond Landing is quickly becoming one of the nation's premier tournament fishing venues. The improvements will allow Anderson County to consistently attract the world's biggest and best competitive fishing events, as well as local and regional tournaments for anglers of all skill levels.



Courtesy Dock Expansion Project



Most importantly, these improvements will provide an additional amenity for boaters right here in Anderson County, allowing our residents to enjoy a World-Class, free-to-the-public lake access facility.

“In my mind, Green Pond Landing has met or exceeded our expectations on practically every level”, said Anderson County Council Chairman Tommy Dunn. “We are attracting visitors and making new friends many weekends each year, and our local merchants are seeing a tremendous benefit from all the increased tourism. And our residents have access to a great boat launch facility free of charge! Everyone's a winner here.”

The improvements to Green Pond Landing will include construction and installation of a new 10' x 250' aluminum courtesy dock as well as the addition of a 10' x 100' “L” section. The improvements are expected to cost a total of approximately \$866,666 with \$650,000 coming from the Sport Fish Restoration Fund and the remaining \$216,667 being funded by Anderson County through local Accommodations Tax (ATAX) funds, which are generated by a fee on hotel room stays.

Courtesy Anderson County press release

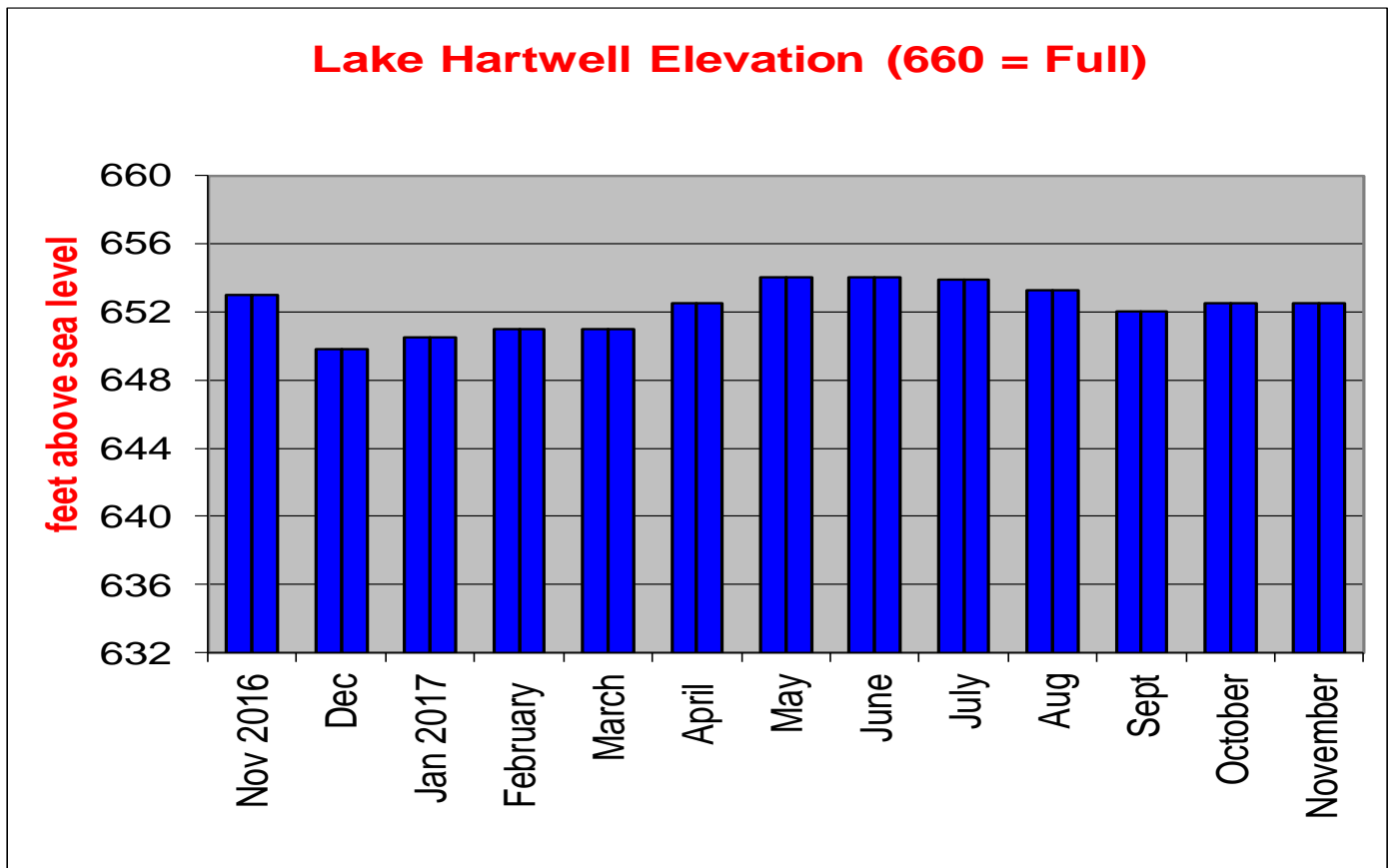
Fishing Report

Lake Hartwell December 1st 61 degrees

Most areas of the main lake are clear. We are going to continue to focus shallow in the Tugaloo river areas as the temperatures continue to get cooler. We have been working both short and long pockets for these fish. The key has been the bait we will idle in and look on our side imaging and 2D sonar if we found bait we would fish the area if not we moved on to the next pocket. Our key baits have been a buzz bait, chatter bait, swim jig, and flipping jig. The other key to this was to only fish the high percentage areas in the pockets. Look for underwater flat points, flats, docks, and brush and be versatile at all times. If we saw any of these key areas we fished them with one of the above mentioned baits. On the main lake there is plenty of schooling action keep a top water, Spybait's or small swim bait rigged up and ready. Other areas to look for on the main lake are rocky points, ledges, and timber edges. Fish have been anywhere from 15 to 45 feet some of the baits we have been throwing have been a top water popper, Spybait, small swim bait, jig, drop shot, and shakey head. You will want to cover as much water as you can so keep the trolling motor on high hit the high percentage structure and cover and keep moving in the Tugaloo. On the main lake same deal keep moving if you don't get bit within the first 10 minutes pull up the trolling motor and move to the next spot. Remember this time of year is all about the bait find it and you are more than likely going to find the fish.



Courtesy www.havefunfishing.com



New Condo Project Planned for Lake Hartwell

Along the shores of Lake Hartwell, across from the Clemson University campus, Tiger fans will soon have a unique place to own or stay.

Lakeside Lodge will feature a four-story resort condo complex with 116 units. The condos will be a mixture of studios and one-, two-, and three-bedrooms for sale. The unique part? The condos will also include all the amenities of a high-end hotel including 24/7 concierge service, house-keeping and maintenance, a lobby, restaurant/bar, fitness center, and meeting space. Condo owners will be able to rent out full units and lock-off individual bedrooms (in the two- and three-bedroom units) to generate income by utilizing the resort's professionally managed short-term rental program to lease their units for the night, weekend, or week at a time.



“We’ve got a unique concept that gives people the ownership and amenities they want but that can also generate income,” says Leighton Cubbage, chairman of Allie Capital LLC, one of the developers of the project. “I personally love to go places, but the maintenance takes away from the fun. With Lakeside Lodge, everything’s included. You’re in a high-end suite and it’s yours, but you can leave, not have to vacuum, and the next day it’s rented out. It gets you out of the upkeep of owning a home and lets you enjoy your stay.”

Additional onsite amenities will include a pool and hot tub, walking paths, fire pit, and a shelter with paddleboards, kayaks, and canoes. A full-service marina is located nearby for boat rental or storage. “This puts the lake in play for us. You don’t have to own a lake house on the water to enjoy Lake Hartwell,” Cubbage says. A restaurant/bar is also planned, and restaurateur Rick Erwin is an investor. Needless to say, “Rick will have an impact on the food,” Cubbage says.

The property will be family- and pet-friendly. Cubbage says plans are in the works to create a football field overlooking the lake where kids and parents can throw a football around while hanging out or tailgating for Clemson games. Reservations for units are being accepted now with a refundable deposit. For more information, interested buyers can visit LakesideLodgeClemson.com. The sales office, currently under construction in Tiger Plaza on Highway 123, is scheduled to open before unit sales start in late 2017. Construction is expected to begin in spring 2018 with a scheduled opening in time for the 2019 football season.

“We see Lakeside Lodge as the best of both worlds,” Cubbage says. “Owners can enjoy being in Clemson on game day or any other day of the year, plus they are right on Lake Hartwell with all of the amenities they could want.”

For the Kids



Christmas Decorating

ACROSS

- Used to wrap a present
4. Decoration for a banister
7. Striped and sweet
9. Used to open a walnut
10. Door decoration
11. Many times these are strung together
13. Glitter for the tree



DOWN

2. Decorative spheres
3. Another word for decorations
5. Christmas tree fruit
6. Might light the dinner table
7. Place where greetings are found
8. Hung by the chimney
12. Might be cedar, fir or pine



BuyHartwellLake LLC

1-855-Buy-Lake



- We know the lake, our experience allows us to evaluate your needs and quickly identify properties that make sense for you.
- We have the largest inventory and selection of properties listed on Lake Hartwell. Over 20 million dollars as of 9/1/2017
- Every partner in our company is a full time resident on Lake Hartwell
- All partners have more than 15 years experience selling and listing property on Hartwell.
- Homes and lots are listed in **three** MLS systems, Western Upstate SC, Greenville SC and GA MLS for maximum exposure.
- Our site www.BuyHartwellLake.com is typically listed first on the first page of virtually all google searches for Lake Hartwell homes and lots.
- We have a one million+ email database of the prime Lake Hartwell purchasing demographic for marketing purposes.
- All listings are submitted to 700+ websites including our flagship site BuyHartwellLake.com. Over 100 million prospects visit our network of partnered websites every month! You will be seen!
- Our monthly newsletter features listings, corp news, lake events and is distributed to thousands of lakefront property owners and a database of clients interested in owning lakefront property.
- Need a different perspective? We offer property viewing by boat. This can give you a unique look at a particular home or lot that you're considering.

Call us anytime to discuss your situation
1-855-Buy-Lake



Patty and Don Cleveland
864-940-2232
Patty@buyhartwelllake.com



- Members of SC Western Upstate, Greenville SC & the GA MLS
- Multi-Million Dollar Producers and Accredited Buyers Representative
- Specialization: We all specialize in property on and around Lake Hartwell, Lake Keowee and other surrounding lakes. We pride ourselves in keeping abreast of the market of both what is new and what has sold. We want to be well informed so as to give you the best service possible. Our motto is “If we don't take care of our customers, somebody else will”.
- Personal: We have lived on Lake Hartwell for a number of years owning property in both Georgia and South Carolina. We know Hartwell! Whether you are looking to be on the lake or in a lake accessible area, we can help you. Once you narrow your search down, we can show you property by boat. If you are looking to sell, please let us meet with you and show you our marketing plan. Many of our clients are referred to us by previous clients. Let our dream of lake living be yours as well.

Kyle Corbett
864-376-9163
Kyle@buyhartwelllake.com



- Listing Specialist–Aggressive Marketing Plan for Lake Property&Homes with inclusion in three MLS Systems.
- Listing Sales Rate 36% GREATER than the lakefront market average
- Full time resident on Lake Hartwell for the last 26 years
- Licensed in SC and GA – Multi Million Dollar Producer
- I bought my first lake cabin in 1992 a few years after graduating from Clemson University. 25 years later I am married with three boys and we spend a great deal of our free time skiing, tubing, knee boarding and kayaking
- I have a marketing plan which is second to none and gives our sellers an upper hand when it comes to listing their property. As a result, my listing sales rate for homes is 36% GREATER than the market average. Why? Because we do more! My approach is based on years of experience, research and knowledge of buying trends. I do not just put sign in the yard and just walk away, I spend time everyday with every listing making sure it is best positioned to get maximum exposure. Allow me to determine the value of your lakefront property.

Debbie Henderson
404-313-4404
Debbie@buyhartwelllake.com



- Originally from the Midwest, my husband and I moved to Stone Mountain, GA in 1980 to start a new business and then to Snellville where we raised three children. We now have two grandchildren and a dog named Sir Alex Ferguson.
- After boating on Lake Lanier for many years, we moved to Martin, Georgia on quiet, peaceful Lake Hartwell in 2005. By water, we are near the “jumping rock.”
- My husband builds custom lake and golf course homes. I've observed first-hand the building/selling process over the last 25 years.
- Licensed in Georgia & South Carolina to serve your buying and selling needs on Lake Hartwell and surrounding areas.
- Obtained an additional Accredited Buyers Representative designation in 2014.
- I would be delighted to help you buy or sell on Lake Hartwell!



Judy Stevanovich
864-276-7416
Judy@buyhartwelllake.com



- I was born and raised in Anderson. After a 32-year career in Corporate America and many relocations, I came home to Anderson in 2005.
- My Marketing, Sales, Finance, Human Resources, and Administration background in Corporate America has been immediately put to work in Real Estate.
- My husband Steve and I live in Stone Creek Cove in Anderson on the shores of gorgeous Lake Hartwell. Steve is an artist and when he is not in his studio there is only one place to look -- the golf course. We both love being in Anderson.
- I obtained my Accredited Buyer's Representative (ABR) and my Senior's Real Estate Specialist (SRES) certifications in 2014.
- My sub-company is the Upstate A Team and my slogan is "Real Estate With a Difference!" Call me today and you will be able to experience first hand the processes I have put in place to quickly find you the perfect property or determine the market value to sell the property you have today. For more info, see my website www.upstateateam.com.
- Call me today and experience, "Real Estate With A Difference!"

Larissa Pino
864-376-2745
Larissa@buyhartwelllake.com



- I am originally from South Florida and I speak fluent Spanish. My husband and I have been married for 23 years and we have 3 beautiful children. My family and I moved to South Carolina approximately 10 years ago.
- I am licensed in South Carolina and Georgia. I ultimately chose to specialize in lakefront property because my family and I love spending time on Lake Hartwell and when you love something, it's easy for others to see how strongly you feel.
- I take pride in the fact that I am knowledgeable about Corps of Engineers rules and regulations, lake levels, and market conditions. I enjoy working with people and I am committed to working diligently for my clients and exceeding their expectations. I take time to listen and learn about my clients' wants and needs and strive to always act with the utmost professionalism and work using a very hands-on approach.
- Whether you are looking to buy or sell (on or off the lake), please feel free to contact me. I look forward to working with you and making your real estate dreams come true! See ya' on the Lake!

Sarah Cleveland
864-415-7448
Sarah@buyhartwelllake.com



- I have lived in South Carolina all of my life.
- My husband and I have been married for 27 years and have 2 sons that graduated from Clemson University. I have been around the Anderson/Clemson area for close to 30 years and have owned a condo on Lake Hartwell for the past 2 years.
- I have over 30 years experience in public education where I have worked with administrators, teachers, students and parents. I understand the importance of helping people reach their goals.
- Let me be the 1st to help you!



Katie Tillman

864-303-3469

Katie@buyhartwelllake.com



- After we sold our building downtown, we opened another restaurant at Stone Creek Cove on Lake Hartwell and operated that for 5 years. We sold that restaurant 5 or 6 years ago and decided to continue to develop the catering portion of our business. In that time, we have developed a thriving catering business that I continue to work, and am still an operating partner.
- I love Anderson, I have been here 30 years. I came here to work for the City in Downtown Development. I worked with the City for several years and then met my partner of 25 years, Val Lowe and we opened Friends Restaurant in Downtown Anderson. We operated the restaurant and catering company for 17 years.
- I have extensive contacts in the Anderson and surrounding business communities, and can use the skills I developed running a small business to help buy or sell your home or property.
- I live on the lake and have for 25 years. It is beautiful, tranquil and fun; I highly recommend it and would like to help anyone interested in owning lake property, make that so.

Cynthia Spejewski

864-650-8480

Cynthia@buyhartwelllake.com



- Working as a realtor in the State of South Carolina since 2003
- Specializes in lake properties but also loves the rich agricultural heritage of the Upstate as well as the diverse neighborhoods
- Retired teacher and is currently the organist at Holy Trinity Episcopal Church in Clemson, SC
- Long time resident on Lake Hartwell currently living in Fair Play, SC

Robin Westergren Doua

770-655-5430

Robin@buyhartwelllake.com



- Born in South Carolina and raised in northern Greenville County I have many fond memories to reflect on. My parents built a cabin on Lake Hartwell in 1964 and we spent almost every weekend there until I graduated high school. It was there by the time I was ten years old that I learned to swim, drive boats and pull skiers. Lake Hartwell has had my heart all of these years and I always knew that, one day, I would move back.
- After living in Northern California in the early 1980's I moved to Marietta, GA in 1983 and became a licensed Realtor in 1986. My love of people, homes and architecture made this the perfect fit for me as a career. After 30 years of taking care of clients in the Atlanta area my husband Paul and I are moving back to Lake Hartwell. We both love boating and lake life and look forward to sharing it with clients and friends in the coming years.
- I am a licensed Realtor in Georgia and South Carolina.
- Over the years I have earned many designations in my career, but the thing that I treasure the most are the many friendships that I have made. Treating clients honestly and fairly while solving their Real Estate needs.....whether it be finding their dream home or making sure their rental properties are managed properly makes my job a dream come true.



Sylvia Pintado
864-556-4436
sylvia@buyhartwelllake.com



- After being in Sales and Marketing in the print media industry for over 27 years, Sylvia Pintado has decided to follow her lifelong passion of becoming a Real Estate Professional.
- Sylvia has always been successful in achieving her personal as well as her professional goals because of her desire to help other people and do what is right. She is very easy to talk to and always willing to listen.
- Sylvia says “One of the most important transactions that people will do in their lifetime is the purchase of a home, my goal is to help them achieve that.”
- Sylvia is the wife of 27 years to Jesse Pintado and mother to three wonderful children, Jesse (25), Stephanie (23), and Eddie (21) and let’s not forget the dog Miley, she is the princess of the house!
- She says that it is with their love, support and faith in God that she maintains that motivation, dedication and discipline to do well and help others.
- She is truly excited to represent BuyHartwellLake LLC and assist you with any and all of your home buying or selling needs.

Lisa Topping
864-207-1552
Lisa@buyhartwelllake.com



- I am a native of Florida and began my real estate career in Orlando in 2004 working with a prominent builder. I moved to Georgia in 2008 and my husband & I have lived on Lake Hartwell for the past several years. We enjoy all of the activities our beautiful lake has to offer year round.
- I pride myself on having a nurturing personality and have always felt fulfilled helping others. Whether you are a first-time or seasoned home buyer or seller, I would be delighted to help you reach your goals.
- I enjoy meeting new people and helping them through the home transaction process.
- When you trust me as your real estate expert, expect a professional partner who values communication and provides honest answers to your questions and concerns. I will represent your interests with dedication and commitment.