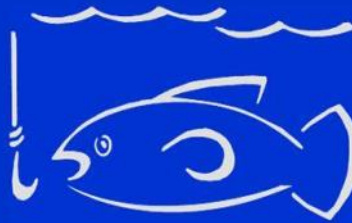


BuyHartwellLake

llc



1-855-BUY-LAKE



July2017

Email your pictures of Hartwell to HartwellLakefront@gmail.com.
One will be selected every month for our cover.

**New Listings
Of the Month**



**BuyHartwellLake.com
1-855-Buy-Lake**

482 Shore Crest Dr Martin GA \$394,000 - Large 6-BR home in an established Lake Hartwell neighborhood is perfect for full time living or weekend getaways. Ideal living for two families, too! Nice yard for outdoor games, rocking chair front porch. Cozy family room with hardwood floors, stackstone floor-to-ceiling fireplace and open to huge kitchen with stainless steel appliances, bar seating and view of the lake while sitting around the table. Master suite with spacious bath includes Jacuzzi tub, tile shower, dual vanities. Sunroom off the master suite. Large deck w/ beautiful lake views. Terrace level has three more bedrooms, full bath and large family room with pool table. Second full eat-in kitchen. Sidewalk to covered slip dock.



Lot 21 Deerfield Seneca SC \$49,000 - Great dockable wooded lot with lake views and good water. Close corp line and nice building site. 15 min to Seneca or Clemson. Easy to boat to the football games! Located in a quiet neighborhood of well kept homes. Great opportunity for a full time home or weekend retreat!!



370 Trudy Trail Martin GA \$150,000 - You must see this oversized 1.31 acre lakefront lot located in a restricted subdivision. The land is level with an easy walk to the lake. Situated in a deep water cove. Lot has been under brushed and is marked with orange flags on path to lake. Owner has verbal approval from The Corp for a 26x28 covered slip dock with a 60 ft. gang walk. You are close to the exclusive Currahee Club Golf Course that offers many amenities.



121 Early Drive Hartwell GA \$159,900 - Organic 2.85 Acre Farm near Lake Hartwell. Geo Dome Greenhouse, 8' deer fencing surrounding property and irrigation throughout the property. A variety of fruit trees, blueberries, crimson clover and muscadines producing this summer. Well-suited for honey bees. Includes a 2BR/1BA 1.5 story home built in 2010 with an open floor plan. Nicely finished inside with a huge great room, wood-looking tile floors, kitchen with stainless steel refrigerator, range/oven and a commercial-size industrial sink for prepping produce. Easy-care exterior with Hardi-Plank siding and metal roof. Boat ramp is just 4 miles away.



Lot 13 Horseshoe Bend Westminster SC \$60,000 - Beautiful open water views with a covered slip dock in place on good water. Close corp line and great secluded neighborhood of upscale lake retreats. Near Westminster SC, Seneca SC, Toccoa GA and just a minute from Hwy 123. Unbelievable opportunity for the price.



New Listings Of the Month



BuyHartwellLake.com
1-855-Buy-Lake



Lot 5 Blackjack Cove Road Westminster SC \$37,900 - Unrestricted Waterfront lot. Platform Dock in place (water needs to come up for Dock to be in water). Mixed trees and gentle slope to the water. Mobile Homes and Modular Homes allowed. Owner is having a path graded so that interested buyers can walk down to the dock. Owner is also having the dock Painted. Great Location off of I-85.



119 Tahoe Dr Townville SC \$85,000 - Great value if you are looking for a home next to the lake. Spacious and freshly painted mobile home. Screened back porch. Brick Underpinned, Walk in shower and Garden tub in master bath. Den with fireplace. Spacious eat in Kitchen with lots of cabinet space, small island and office nook. Sit in the new front decked porch and smell the gardenia bushes in the breeze and enjoy the view of the Hydrangeas when in bloom. Storage barn out back as well as a detached two car carport. Owner also selling lot next to the property .71 acres of cleared well kept unrestricted lot with septic tank in place and all utilities for \$17,000



139 McAlister Townville SC \$219,000 - Wonderful rustic newly remodeled lakefront cottage with open living areas, fireplace, large covered porch, lakeside screened gazebo, lakeside deck, over sized 20x28 garage, quiet end of street location and a dock in place on good water(10+ feet deep at swim ladder at full pool) just off big water. Remodel included new kitchen with stainless appliances, new doors and windows, flooring and wood ceilings in bedrooms and upgrades to dock. Close to I-85, and Anderson. Convenient to Portman Marina and restaurants by boat! Most furniture included-ready to enjoy now!



Lot 8 Sapphire Point Anderson SC \$125,000 - Fantastic open sail-boat waters! Partially cleared, easy to walk and great building site. Mature hardwoods on property. Deep water and wonderful views. Must see in person to appreciate the clear clean water at this location. Upscale private neighborhood. Beautiful spot for a full time residence or summer home. Approved for large covered slip dock. Close to Anderson and convenient to grocery stores and shopping. A great opportunity for the price!



Q&A With The Corp Of Engineers



How can recreation be made a higher priority?

Project authorization mandates us to strive to balance project purposes. In order for any specific project purpose to be designated as a “higher” priority, legislation to amend or change the existing authorizations would have to be passed by Congress.

Major changes in operation of the reservoirs require careful study of the benefits and impacts associated with the proposed changes. The Savannah River Basin Comprehensive Study would produce the analyses needed to update operating rules and revise cost allocations among the purposes.

We know that actions taken in one area of the basin will likely impact other areas of the basin.

Who determines how much water can be taken out of the Savannah River?

The states of Georgia and South Carolina oversee and permit withdrawals from the water system. The Corps coordinates regularly with the states’ resource agencies on water management in order to gauge needs of upstream and downstream users. In addition to the states, we develop water management plans and procedures for the reservoirs with input from other federal natural resource agencies. These agencies are charged with enforcing federal laws related to water and aquatic ecosystems.

What do CFS and MSL stand for?

CFS stands for cubic feet per second. This is a measurement of flow rate. One cfs is equal to 450 gallons per minute. One million gallons per day = 1.547 cfs (daily average flow)

MSL equals Mean Seal Level and is a measurement of the height of water in the reservoir per foot. We use feet above mean sea level instead of depth because the bottoms of the reservoirs vary widely.

What is conservation storage?

Conservation storage is that portion of range of depth in the reservoirs designed to conserve, or store, water during normal periods for use during low flow periods. Other than flood risk management, the conservation pool fulfills the congressionally authorized purposes of water supply, water quality, downstream navigation, recreation, fish and wildlife management, and hydropower production.

The top of conservation storage marks the bottom of the “flood storage,” where excess water would be kept temporarily following heavy storms. Also, the bottom of conservation storage marks the top of the inactive storage pool – that part of the reservoir designed for storing sediment, typically holding lower quality water due to its depth.

4-H2O Exploring Lake Hartwell - July 17-19

Exploring Lake Hartwell

Serving 9-13 year olds of **Anderson, Pickens, and Oconee** counties

Join the fun! This 4-H program is sponsored by the Clemson University Cooperative Extension Service and has tons of hands-on aquatic activities. Lake Hartwell and local streams serve as the setting for this natural resource program. Learn about things like:

- Where does our water come from?
- What animals live in our woods?
- What animals are in our water?

Camp Dates:

July 17-19, 9:00am—5:00pm daily

Location:

Twin Lakes Day Use Shelter #G002
1890 Shelter Dr.
Pendleton, SC 29670

What will be provided:

- Lunch
- Snacks
- Program Supplies

Please bring:

- Bathing Suit
- Towel
- Bug Repellent
- Water Shoes
- Sunscreen

Please do NOT bring:

- Electronic Devices
- Jewelry
- Weapons

Other Important Information: We will be outside all day. Please dress accordingly.

Contact: Janine Sutter, Pickens County 4-H Agent, 864-878-1394 x122
or your local Extension 4-H Agent

COST

\$75 4-H Members / \$85 Non 4-H Members



Fireworks Over the Lake—ClemsonFest 2017

The 24rd Annual ClemsonFest returns to Snow Family Outdoor Fitness and Wellness Center (formerly Clemson University Campus Beach and Y Beach) on Monday July 3, 2017.

Gate opens at 5pm and continues until 10pm. Fireworks begin at 9:30pm.

This community Independence celebration will bring up to 7,000 people to enjoy the music of the Carolina Coast Band. The Band, sponsored by The Independent Mail newspaper, will perform from 6pm to close. This award winning band has many tributes for its performances, including Carolina Beach Music Festival Beach Band of the Year. It sets the standard for Carolina shag music performances. The Band will offer a few of its original tunes. I Love Beach Music and Carolina Girls along with a wide selection of songs from other artists including Wilson Pickett, Van Morrison and the Beach Boys.

The National Anthem will be performed by local vocalist Clarka Wickliffe.



At 9:30pm, the Band gives way to a spectacular fireworks show before returning to close out the event. In keeping with the Independence Day theme, the Boy Scouts of Troop 161 will do a flag raising ceremony at 5:50pm and will return at dusk for the flag lowering and playing of taps. The first thousand people will receive a small American flag distributed by the Boy Scouts of Troop 161. The flags are a gift to the public from Tri County ACE Hardware of Clemson.



Adults of all ages will enjoy competing in the grip contest sponsored by ATI Physical Therapy.

Food vendor offerings range from barbeque, grilled chicken and sweet potato fries to ice cream, shaved ice, kettle corn and funnel cakes.

A childrens area will feature interactive games, activities, bounce houses and face painting. Kids activities are sponsored by Publix Supermarket and Issaqueena Pediatric Dentistry.

ClemsonFest Admission
\$5 per person or \$10 per carload

Wakeboard Event Visiting Hartwell July 29 & 30



INT LEAGUE
It's going to be a great summer!
2017 SOUTH CAROLINA TOUR

STOP 1 & 2 - MAY 13-14 - LAKE KEOWEE - WAKEBOARD & SURF
STOP 3 & 4 - JUNE 3-4 - BUOY CREEK - WATERSKI
STOP 5 & 6 - JUNE 24-25 - LAKE HARTWELL - WAKEBOARD & SURF
STOP 7 & 8 - JULY 22-23 - GUNNELLS LAKE - WATERSKI
STOP 9 & 10 - JULY 29-30 - LAKE HARTWELL - WAKEBOARD & SURF
STOP 11 & 12 - AUGUST 19-20 - GUNNELLS LAKE - WATERSKI

Waterski, Wakeboard & Wake Surf Competitions
Awards for all divisions beginner-open.
Fun for the whole family!

Register online at
www.intleague.com

SPECIAL THANKS TO OUR SPONSORS:

- GUNNELLS MARINE CENTER
- STRICKLAND MARINE CENTER
- BOATHOUSE
- JC Sports
- HALL MARINE
- WATERSPORTS CENTRAL
- Champion's Choice MARINE, INC.
- PROLINE MARINE

Wakeboard and Wakesurf Event
Singing Pines 6600 US-29, Starr, SC 29684

Take I-85 to Exit 14. Head east on Hwy 187. At the first traffic light turn left, still on Hwy 187. Go approximately 2-3 miles and turn right toward Sadler's Creek State Park, staying on Hwy 187 for about 8 miles. At the four way intersection turn right onto Hwy 29 south. About 2.4 miles take slight right into Singing Pines Recreation Center (There may be an entrance fee into the park.)

www.intleague.com/southcarolina/event-schedule/

Fishing Guide for Hartwell, Richard B. Russell & J. Strom Thurmond Lakes

Species	Best Fishing Temperature	Natural Food & Feeding Time	Best Season	Peak Hours	Area	Depth	Lures & Baits
Largemouth Bass	65 - 75°	Crustaceans, insects, crayfish, frogs, fish. Feed mostly during the day.	April - early June	Dusk & dawn	Shoreline	1 - 4'	Plastic worms, spinner baits, plugs
			Late June - September	Dusk & dawn	Day = Deep water	15 - 35'	Plastic worms, spoons, jigs
					Night = Shallow water	1 - 8'	
			October - November & March	Daylight	Shallow	1 - 8'	Plastic worms, plugs, spinner baits
December - February	10 a.m. - 4 p.m.	Deep water	20 - 50'	Plastic worms, spoons, jigs			
Hybrid Bass	55 - 70°	Fish, insects. Feed during day.	March - May	Day	Tributary headwaters, open water near the dam	1 - 15'	Blueback Herring, minnows, jigs, plugs, spoons
			June - September	Day	Deep water	15 - 40'	Blueback Herring, minnows, jigs, spoons
				Dawn, dusk & night	Points on flats with deep water access, bridges	2 - 15'	Blueback Herring, minnows, jigs, plugs, spoons
			October - November	Early & late	Open water	Surface	Blueback Herring, jigs, plugs, spoons
Dec - Feb	Day	Open water near creek beds or islands	20 - 50'	Blueback Herring, jigs, spoons			
Bluegill	65 - 75°	Insects, vegetation, larvae, snails, fish. Feed in daylight.	April - June	Day	Weeds & brush	1 - 5'	Worms, crickets, spinners, flies
			July - August	Dusk & dawn	Weeds, rocks, brush	10 - 12'	Worms
			March & September - October	Day	Weeds & brush	3 - 8'	Worms
			November - February	Day	Brush & rocks	10 - 15'	Worms
Crappie	60 - 75°	Mollusks, insects, crayfish, shad, minnows. Feed mostly during the day.	April - June	Dawn & late afternoon	Brush, steep banks	3 - 8'	Minnows, jigs, spinners
			July - August	Night	Submerged brush	10 - 35'	Minnows, jigs, spinners
			September - October & March	Dusk	Brush	5 - 15'	Minnows, jigs, spinners
			November - February	Day	Submerged brush	10 - 30'	Minnows, jigs, spinners
Striped Bass	55 - 70°	Fish, insects. Feed during day.	March - May	Day	Tributary headwaters, open water near the dam	1 - 15'	Blueback Herring, minnows, jigs, plugs, spoons
			June - September	Day	Deep water	15 - 40'	Blueback Herring, minnows, jigs, spoons
				Dawn, dusk & night	Points on flats with deep water access, bridges	2 - 15'	Blueback Herring, minnows, jigs, plugs, spoons
			October - November	Early & late	Open water	Surface	Blueback Herring, jigs, plugs, spoons
Dec - Feb	Day	Open water near creek beds or islands	20 - 50'	Blueback Herring, jigs, spoons			
White Bass	55 - 70°	Crustaceans, insects, shad, minnows, crayfish. Feed most actively at dusk & dawn.	March - April	Day	Headwaters, rip rap	2 - 8'	Minnows, jigs, small spoons, spinners
			June - August	Dusk & dawn	Open waters	Surface	Minnows, jigs, small spoons, spinners
			September & May	Day	Steep banks	3 - 15'	Minnows, jigs, small spoons, spinners
			October - February	Day	Windy points	Surface	Minnows, jigs, small spoons, spinners
Channel Catfish	60 - 75°	Insects, larvae, crayfish, snails, clams, worms. Feed mostly at night.	April - June	Dusk & dawn	Coves	1 - 8'	Worms, crayfish, minnows, cut bait, stink bait
			July - August	Night	Flats off channels	6 - 18'	Worms, crayfish, minnows, cut bait, stink bait
			September - October	Dusk & dawn	Mud flats	6 - 12'	Worms, crayfish, minnows, cut bait, stink bait
			November - February	Night	Channels & holes	15 - 40'	Worms, crayfish, minnows, cut bait, stink bait
			March	Day	Flats	6 - 12'	Worms, crayfish, minnows, cut bait, stink bait
Trout* *Hartwell tailwater only	65°	Insects, larvae, snails, fish, crayfish.	March - May	Day	Riffles, channels	0 - 4'	Worms, crickets, flies, spinners, corn
			June - August	Dawn	Riffles, channels, deep holes	1 - 6'	Worms, crickets, flies, spinners, corn
			September - November	Day	Riffles, channels	1 - 6'	Worms, crickets, flies, spinners, corn
			December - February	Day	Deep holes	4 - 12'	Crickets, spinners, sinking flies

Support the Lake!



PO Box 2122 • Anderson, South Carolina 29622
864-224-LAKE (5253) • www.LakeHartwellAssociation.org

Lake Hartwell Association cares about preserving the water quality and quantity, as well as the beauty and recreational opportunities of Lake Hartwell. We welcome individuals, families, and businesses to come together for this important cause.

Remember: LHA is a 501©3 non-profit, so dues and donations are tax-deductible. Our EIN is 57-0893639.

All LHA Members receive these benefits:

- Knowing that your support helps protect Lake Hartwell, a valuable resource to Georgia and South Carolina
- Newsletter — LHA quarterly newsletter mailed directly to you
- Email news items that pertain to the lake
- Opportunities to attend LHA Membership Meetings and hear expert guest speakers
- Notices regarding important information, meetings and hearings regarding Lake Hartwell
- Program participation — easy to get involved with the planning and execution of the annual Lake Hartwell Clean-up and water recreation safety programs.

PERSONAL MEMBERSHIPS

FAMILY	CAPTAIN'S CLUB	ADMIRAL'S CLUB	COMMODORE'S CLUB
All basic benefits listed above	All basic benefits PLUS... license plate frame	All basic benefits PLUS... license plate frame and \$30 Credit for LHA logo items	All basic benefits PLUS... license plate frame and \$50 Credit for LHA logo items
\$40	\$55	\$100	\$200

COMMUNITY AND BUSINESS PARTNER MEMBERSHIPS

MEMBER	SILVER	GOLD
All basic benefits listed above PLUS Company Name on LHA website	All basic benefits PLUS Company Name, logo and website link on LHA website AND listing in LHA Quarterly Newsletter	All basic benefits PLUS Company Name, logo and website link on LHA website AND business card size ad in LHA Newsletter
\$100	\$250	\$500

PLEASE RETURN THIS PORTION WITH YOUR PAYMENT

THANK YOU FOR
YOU SUPPORT!

Name(s) _____

Address _____ City _____ State _____ Zip _____

Telephone # _____ Email _____

CHECK CATEGORY

- Personal Memberships: Family \$40 Captain's Club \$55 Admiral's Club \$100 Commodore's Club \$200
Business Memberships: Member \$100 Silver \$250 Gold \$500

Mail your check or money order to:

Lake Hartwell Association
PO Box 2122
Anderson, SC 29622

Or, to make a secure payment online, visit:

www.lakehartwellassociation.org

Big Water Marina First Responders Appreciation Event



EVENT SCHEDULE

(Start time: July 2nd 2:00 PM, End time: ~9:15 PM)

2:00 PM - Enjoy some fun in the sun, plus live music from a DJ

Food & drink will be available for purchase throughout the event. Several food vendors will be joining us for the day.

5:00-7:00 PM - A VIP tent will be serving complimentary food for the families of first responders. (Other guests may still purchase food during this time).

7:30 PM - DJ will give a shout-out to all the first responders with an appreciation speech.



8:50 PM - Fireworks show begins. (24 minutes of music synchronized with mile high aryl pyrotechnics).

Free Admission!

Big Water Marina
320 Big Water Rd Starr, South Carolina 29684

The Lake Hartwell Mobile App

Search no further than your pocket (or purse) to access real-time data on reservoir levels, rainfall, outflows, forecasts and other useful information on our lake projects and the Savannah River.

The U.S. Army Corps of Engineers Savannah District announces the launch of a new mobile app, now available for free download via the iTunes App Store, Google Play and the Amazon app store. To download, simply search for "USACE Savannah" from the app store compatible with your mobile device.

We designed the app to provide the most in-demand information on lakes Hartwell, Russell and Thurmond, as well as river conditions downstream. We made conscious efforts to develop an application that was easy to use from any mobile device, making desired content no more than two clicks away. The idea is to provide quick and convenient access from any location; whether on a boat, camp site or in a restaurant.

The app pulls current data from the district's water management database, but repackages the most frequently-accessed content for easy viewing on smaller screens characteristic of mobile devices.



Fishing the Lake

LICENSE: You may fish anywhere on Lake Hartwell with a valid license from either Georgia or SC Youth under 16 are not required to have a license.

South Carolina licenses are available at Bass Pro Shops or see: <http://www.dnr.sc.gov/purchase.html>

Georgia licenses are available at Bass Pro Shops or see: <http://georgiawildlife.dnr.state.ga.us/>

To catch or possess Trout a Trout stamp is required and other rules apply.

SEASONS: You may fish any time of the year in Lake Hartwell

BREAM (Bluegill, Redbreast, Shell cracker, Pumpkinseed) - Bream congregate under docks, around piers and in submerged brush. They are easy to catch using worms, crickets, and other insects as bait. Bream are responsible for introducing more youth to fishing than any other fish. Common sizes from 3 ounces to 1 pound with the record shell cracker exceeding 5 lbs. A daily limit of 3 total Bream applies.

CRAPPIE (Black and White Crappie) are one of the most popular sport fish in Lake Hartwell. They are often caught in large numbers using minnows around piers and submerged brush. Crappie may range up to 5 lbs. with the "Typical" catch ranging from 1/2 lb to 1-1/4 lbs. A total daily limit of 30 applies.

LARGEMOUTH BASS - More time and money are spent in the pursuit of this fish by anglers than any other species. They may be caught at any time of the year feeding near the shore in early morning. In Lake Hartwell and Lake Keowee they are most commonly fished for using artificial bait. Large mouth bass range up to 16 lbs. with the "Typical" catch ranging from 1 to 8 lbs. A daily limit of 10 fish applies. Fish caught in Georgia waters shorter than 12" must be released immediately.

HYBRID BASS - A cross between a male white bass and a female striped bass, hybrids grow to 20 lbs while the "Typical" catch is 2 - 3 lbs. Hybrids are a strong and aggressive fighter making them a favorite of Hartwell fishermen. Bait includes shad and blueback herring. A limit of 10 Hybrid and applies.

STRIPED BASS - The granddaddy of sport fish in Lake Hartwell, Stripers range up to the recent (2/2002) record of 59-1/2 lbs with a "Typical" catch ranging from 3 to 10 lbs. Fish in the 15 to 30 lb. range are routinely caught. Preferred bait is blue back herring. Striped bass will sometimes push schools of bait fish to the surface then feed in a frenzy. A limit of 10 total Hybrid and Striped Bass applies.



Finally an alternative to schlepping a box of chicken in the boat. Offering fast casual food and drinks in an open air, relaxed environment, The Grill at Clemson Marina is the answer to many boaters' requests for food accessible by boat on this end of Lake Hartwell. We are pleased to offer top notch food under refreshing ceiling fans with stunning views of Lake Hartwell and Clemson University's Death Valley. From salads to burgers and wings, Po Boys to Chicken Fingers, we've pretty much got it covered. We even have healthy options like fresh salads.

Next time you're out, and everyone's hankering for a burger, motor on up to the dock, hop out, grab a bite and a beer. You'll be glad you did.

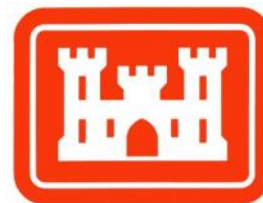
**150 Clemson Marina Dr
Seneca, SC 29678
864.653.6767**

New Corps Plan Will Help Lake Levels During Drought

Officials from the Corps of Engineers' Savannah District released a draft report containing recommendations to improve management of water resources in the Savannah River during drought.

The study put together detailed information to determine "the amount of flow required during severe and prolonged drought." Officials seek comments on the study and updated drought plan before determining the final course of action.

Government agencies, industry, civic groups and individuals may submit comments through noon Eastern Time July 13, 2017.



**U.S. Army Corps
of Engineers®**

The Corps, along with its study partners, the Georgia Department of Natural Resources, the South Carolina Department of Natural Resources and The Nature Conservancy, examined six different alternatives to manage water during drought, comparing each to keeping the current plan. The recommended alternative, labeled "Alternative 2" achieves the most positive impacts and the least negative impacts to the water resources compared to each of the others.

Under the recommended alternative, drought trigger level 3 rises 6 feet bringing the most restrictive outflows into play much earlier in drought. In addition trigger level 1 would remain constant year-round as opposed to dipping in relation to the winter drawdown. This has the effect of possibly reducing outflows sooner than the current plan. Alternative 2 also keeps level 2 flat year-round reducing flows further, sooner than in the current plan.

The release of the draft report marks the second interim of the Savannah River Basin Comprehensive Study, which started in 2012. This study includes an environmental assessment of the alternatives. The recommended plan would update the Savannah District's Drought Contingency Plan. The drought plan directs water managers and others on how to use and conserve resources when drought strikes the region. The alternative recommended for adoption makes some significant changes to water management during drought.

"Of the six new alternatives studied, the group recommended one with the greatest benefit to the greatest number of purposes assigned to the three Savannah District reservoirs," Nathan Dayan, the study's Environmental Team Lead, said. "We examined impacts to the environment, economics, recreation, hydropower, water supply and water quality, and downstream navigation." "Both states worked alongside The Nature Conservancy and the Corps of Engineers to make this a true partnership in adding to our knowledge of the Savannah River Basin and in updating the drought contingency plan," Dayan said.

The public can send comments about the draft report through noon Eastern Time July 13, 2017, to the Planning Division, Attn: Nathan Dayan by FAX to 912-652-5787, by emailing CESAS-PD@usace.army.mil, or by written comments to: Savannah District, U.S. Army Corps of Engineers, Planning Branch, ATTN: Mr. Nathan Dayan (PD), 100 West Oglethorpe Avenue, Savannah, Georgia 31401-3640.

Courtesy corp of engineers

Hydropower Generation on Hartwell

Hydropower Generation:

Hartwell Powerplant is referred to as a “peaking” plant – which means the powerplant is designed to supply dependable power during hours of “peak” daily demand. In addition to being a very clean energy source, another major advantage of hydropower is the availability to come “on-line” (begin producing power) within a few minutes. Other types of powerplants such as nuclear and fossil fuels often take several hours, at which point the peak demand has often passed. This ability to virtually produce power on demand during peak periods helps to reduce energy shortages (especially during the summer months) and makes hydropower, and the Hartwell Powerplant, an exceptional resource.

The original four generators were designed with a nameplate rating of 66,000 kW. In other words, under controlled conditions, each unit could produce up to 66,000 kW of electricity per hour (the latter installed 5th unit has a nameplate rating of 80,000 kW). However, the nameplate rating of the first four generators recently increased due to a “rehabilitation” or overhaul. The rehab increased the overall plant capacity from 344,000 kW to 422,000 kW, a 22.7% increase; this is equivalent to adding a 6th generator.



On average, the Hartwell Powerplant produces over 468 million-kilowatt hours per year. Revenues have exceeded \$330 million since 1962.

How Hydropower Works:

Hydroelectric power is produced when water from Hartwell Lake flows through the intake section of the dam by large pipes called “penstocks”. The penstocks are located approximately 100 ft. below the surface of the reservoir. Water flows through these 24 ft. in diameter penstocks at a rate of 2 – 3 million gallons per minute when generating. The force of the water rotates the “turbines” which resemble large water wheels or fan blades.

The rotating turbine causes the 41-inch diameter generator shaft to spin, which then causes the rotor to turn (the rotor is a series of magnets where the magnetic field is created). The rotor turns inside the “stator” – a stationary part of the generator made of copper coils of wire called “windings”. Electricity is produced as the rotor spins past (inside of) these windings.

The generators create electricity in the form of volts. By means of transformers, the electric current produced is “stepped up” or increased in voltage from 13,800 volts to 230,000 volts for transmission to power companies or decreased in voltage for use in powerplant operations. Water used in generating the power is discharged into the river below the dam, where it can be “reused” for additional purposes such as water supply and water quality needs of the Savannah River Basin.

Where Does the Power Go?

Power produced at Hartwell and all other Corps operated powerplants in the southeast, is marketed by the Department of Energy’s Southeastern Power Administration (SEPA). Power is sold through SEPA to private power companies and public cooperatives in the Southeastern U.S. and from there to customers of those companies. Although electricity is not sold directly to the consumer, the underlying goal of all Corps hydroelectric projects is to provide power to consumers at the lowest possible rates. Rates are set by the marketing agency and approved by the Federal Energy Regulatory Commission. Revenue from Corps powerplants is returned to the U.S. Treasury.

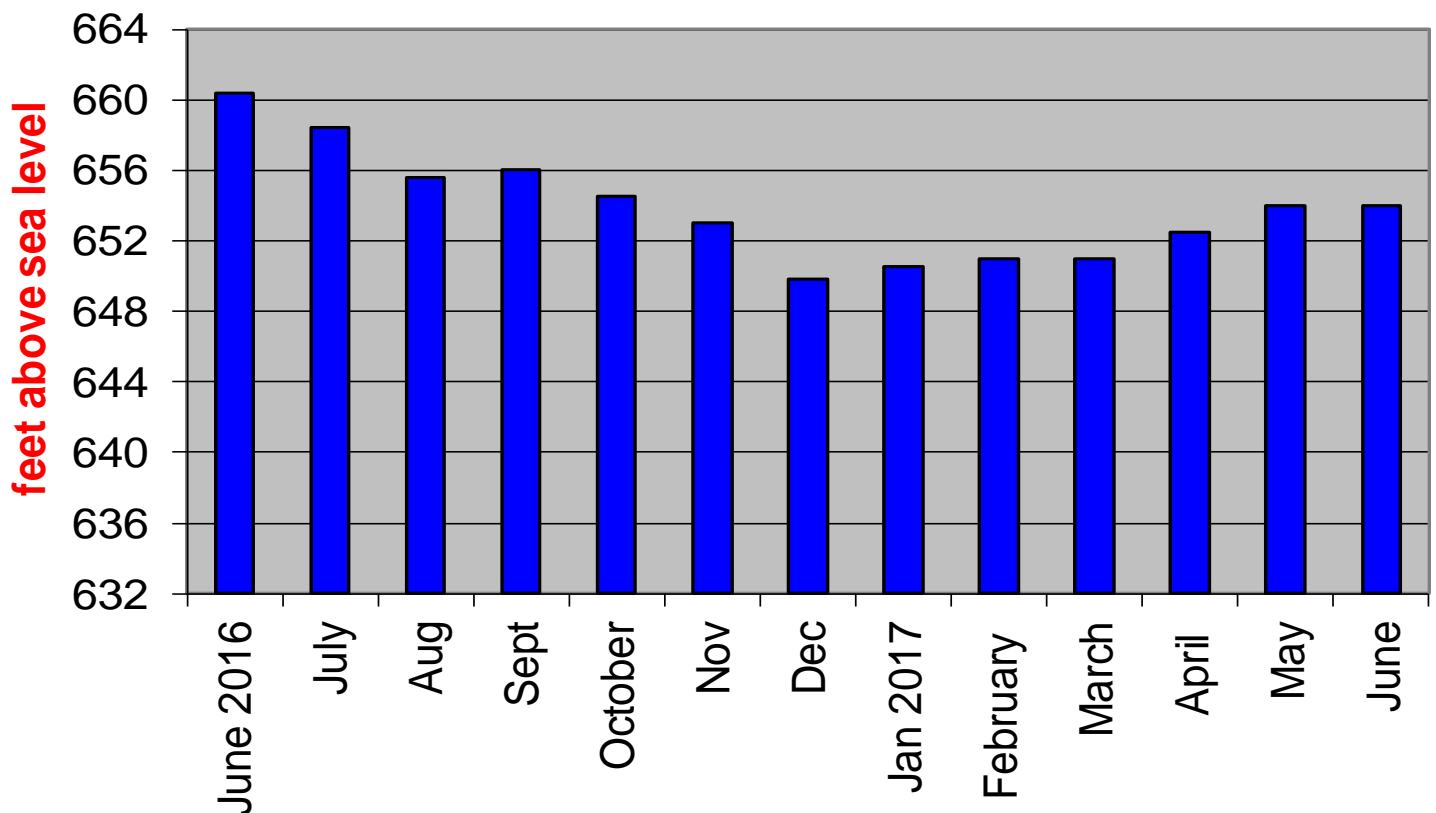
Fishing Report

Lake Hartwell July 81 degrees

Water Level is down 6.52 feet below full pool. The water temperatures are in low 80's with the hot weather we have had. Not much has really changed for us except the bite has been up and down for us this past couple of weeks. We have been keying in on the summer bite now. We have been throwing a lot of top water, flukes, and swimbait style baits. Our best top water baits have been a walking style bait like a Zara Spook out over brush and humps. The fish will be on the top part of the humps in anywhere from 10 to 15 feet first thing in the morning. As the sun gets up start working the bait out over brush in 20 to 25 feet of water. If it was calm we stayed with the fluke and the walking style of top water. If the wind picked up we would add the swimbait to our rotation to see if we couldn't call up some bigger fish. The swim bait we are using is a hard body style swimbait like a Sebile, Bull Herring, or the Bite Sized Herring from Swarming Hornet Lures. One bite that has been doing well for some good fish is a shallow dock bite that have bream around them when we have found this we have been using a swim jig for some really good fish. This bite is better when the sun gets up and the shade gets better around the docks. This is not a numbers bite you have to grind it out and keep moving from pocket to pocket to find it but if you do hold on because they are there. If the bite really slowed down we worked the brush with a shakey head, Spot sticker Hand tied jig, or we eased up on the brush and would drop down with a drop shot rig to catch a couple more fish. Key is to continue to move quickly specially when using the top water baits if we didn't get bit within the first 5 or 6 casts we would move on to the next spot. If we did get bit we would work the area thoroughly before moving on. The key is to be patient and keep moving throughout the day.



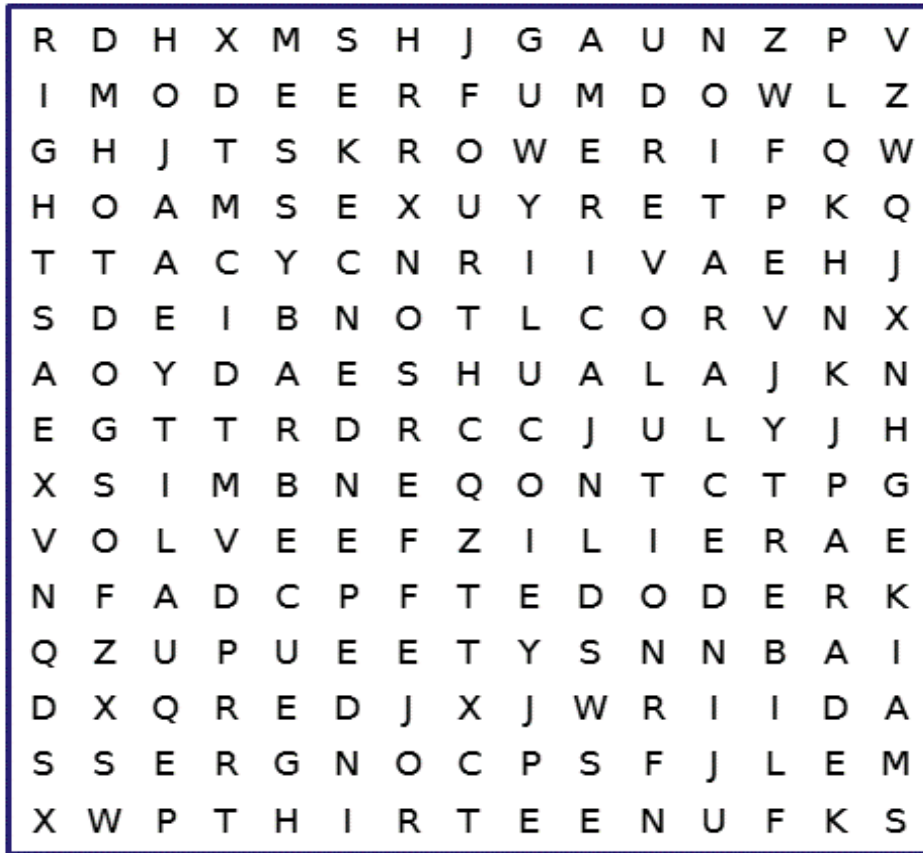
Lake Hartwell Elevation (660 = Full)



For The Kids



July Fourth Word Search



ADAMS
AMERICA
BARBECUE
COLONIES
CONGRESS
DECLARATION
EQUALITY
FIREWORKS

FOURTH
FREEDOM
HOTDOGS
INDEPENDENCE
JEFFERSON
JULY
LIBERTY

NATION
PARADE
REVOLUTION
RIGHTS
STATES
THIRTEEN
UNITED

BuyHartwellLake LLC

1-855-Buy-Lake



- We know the lake, our experience allows us to evaluate your needs and quickly identify properties that make sense for you.
- We have the largest inventory and selection of properties listed on Lake Hartwell. Over 20 million dollars as of 6/1/2017
- Every partner in our company is a full time resident on Lake Hartwell
- All partners have more than 15 years experience selling and listing property on Hartwell.
- Homes and lots are listed in **three** MLS systems, Western Upstate SC, Greenville SC and GA MLS for maximum exposure.
- Our site www.BuyHartwellLake.com is typically listed first on the first page of virtually all google searches for Lake Hartwell homes and lots.
- We have a one million+ email database of the prime Lake Hartwell purchasing demographic for marketing purposes.
- All listings are submitted to 700+ websites including our flagship site BuyHartwellLake.com. Over 100 million prospects visit our network of partnered websites every month! You will be seen!
- Our monthly newsletter features listings, corp news, lake events and is distributed to thousands of lakefront property owners and a database of clients interested in owning lakefront property.
- Need a different perspective? We offer property viewing by boat. This can give you a unique look at a particular home or lot that you're considering.

Call us anytime to discuss your situation
1-855-Buy-Lake



Patty and Don Cleveland
864-940-2232
Patty@buyhartwelllake.com



- Members of SC Western Upstate, Greenville SC & the GA MLS
- Multi-Million Dollar Producers and Accredited Buyers Representative
- Specialization: We all specialize in property on and around Lake Hartwell, Lake Keowee and other surrounding lakes. We pride ourselves in keeping abreast of the market of both what is new and what has sold. We want to be well informed so as to give you the best service possible. Our motto is "If we don't take care of our customers, somebody else will".
- Personal: We have lived on Lake Hartwell for a number of years owning property in both Georgia and South Carolina. We know Hartwell! Whether you are looking to be on the lake or in a lake accessible area, we can help you. Once you narrow your search down, we can show you property by boat. If you are looking to sell, please let us meet with you and show you our marketing plan. Many of our clients are referred to us by previous clients. Let our dream of lake living be yours as well.

Kyle Corbett
864-376-9163
Kyle@buyhartwelllake.com



- Listing Specialist–Aggressive Marketing Plan for Lake Property&Homes with inclusion in three MLS Systems.
- Listing Sales Rate 36% GREATER than the lakefront market average
- Full time resident on Lake Hartwell for the last 24 years
- Licensed in SC and GA – Multi Million Dollar Producer
- I bought my first lake cabin in 1992 a few years after graduating from Clemson University. 25 years later I am married with three boys and we spend a great deal of our free time skiing, tubing, knee boarding and kayaking
- I have a marketing plan which is second to none and gives our sellers an upper hand when it comes to listing their property. As a result, my listing sales rate for homes is 36% GREATER than the market average. Why? Because we do more! My approach is based on years of experience, research and knowledge of buying trends. I do not just put sign in the yard and just walk away, I spend time everyday with every listing making sure it is best positioned to get maximum exposure. Allow me to determine the value of your lakefront property.

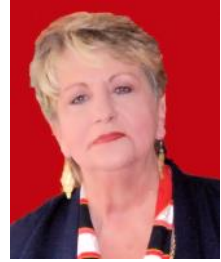
Debbie Henderson
404-313-4404
Debbie@buyhartwelllake.com



- Originally from the Midwest, my husband and I moved to Stone Mountain, GA in 1980 to start a new business and then to Snellville where we raised three children. We now have two grandchildren and a dog named Sir Alex Ferguson.
- After boating on Lake Lanier for many years, we moved to Martin, Georgia on quiet, peaceful Lake Hartwell in 2005. By water, we are near the "jumping rock."
- My husband builds custom lake and golf course homes. I've observed first-hand the building/selling process over the last 25 years.
- Licensed in Georgia & South Carolina to serve your buying and selling needs on Lake Hartwell and surrounding areas.
- Obtained an additional Accredited Buyers Representative designation in 2014.
- I would be delighted to help you buy or sell on Lake Hartwell!

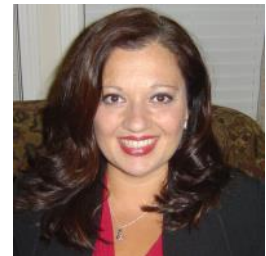


Judy Stevanovich
864-276-7416
Judy@buyhartwelllake.com



- I was born and raised in Anderson. After a 32-year career in Corporate America and many relocations, I came home to Anderson in 2005.
- My Marketing, Sales, Finance, Human Resources, and Administration background in Corporate America has been immediately put to work in Real Estate.
- My husband Steve and I live in Stone Creek Cove in Anderson on the shores of gorgeous Lake Hartwell. Steve is an artist and when he is not in his studio there is only one place to look - - the golf course. We both love being in Anderson.
- I obtained my Accredited Buyer's Representative (ABR) and my Senior's Real Estate Specialist (SRES) certifications in 2014.
- My sub-company is the Upstate A Team and my slogan is "Real Estate With a Difference!" Call me today and you will be able to experience first hand the processes I have put in place to quickly find you the perfect property or determine the market value to sell the property you have today. For more info, see my website www.upstateateam.com.
- Call me today and experience, "Real Estate With A Difference!"

Larissa Pino
864-376-2745
Larissa@buyhartwelllake.com



- I am originally from South Florida and speak fluent Spanish. I moved to beautiful South Carolina in 2008
- My husband and I have been married for 20 years and we have 3 children. I participate in my children's PTA and I am involved in several community based programs. In our spare time my family and I enjoy spending time on Lake Hartwell!
- I have over 21 years of experience in the legal and business fields and I possess great negotiation skills.
- Licensed in both Georgia and South Carolina
- I understand the importance of communication and client satisfaction is my top priority. I enjoy working with people and I am committed to working diligently for my clients and exceeding their expectations. When you work with me, you can expect facts and personalized service.
- If you are looking for "a friend in the business", you just found one! Please feel free to contact me (Yes, even nights and weekends!)

Sarah Cleveland
864-415-7448
Sarah@buyhartwelllake.com



- I have lived in South Carolina all of my life.
- My husband and I have been married for 27 years and have 2 sons that graduated from Clemson University. I have been around the Anderson/Clemson area for close to 30 years and have owned a condo on Lake Hartwell for the past 2 years.
- I have over 30 years experience in public education where I have worked with administrators, teachers, students and parents. I understand the importance of helping people reach their goals.
- Let me be the 1st to help you!



Katie Tillman

864-303-3469

Katie@buyhartwelllake.com



- After we sold our building downtown, we opened another restaurant at Stone Creek Cove on Lake Hartwell and operated that for 5 years. We sold that restaurant 5 or 6 years ago and decided to continue to develop the catering portion of our business. In that time, we have developed a thriving catering business that I continue to work, and am still an operating partner.
- I love Anderson, I have been here 30 years. I came here to work for the City in Downtown Development. I worked with the City for several years and then met my partner of 25 years, Val Lowe and we opened Friends Restaurant in Downtown Anderson. We operated the restaurant and catering company for 17 years.
- I have extensive contacts in the Anderson and surrounding business communities, and can use the skills I developed running a small business to help buy or sell your home or property.
- I live on the lake and have for 25 years. It is beautiful, tranquil and fun; I highly recommend it! and would like to help anyone interested in owning lake property, make that so.

Cynthia Spejewski

864-650-8480

Cynthia@buyhartwelllake.com

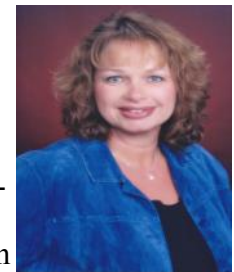


- Working as a realtor in the State of South Carolina since 2003
- Specializes in lake properties but also loves the rich agricultural heritage of the Upstate as well as the diverse neighborhoods
- Retired teacher and is currently the organist at Holy Trinity Episcopal Church in Clemson, SC
- Long time resident on Lake Hartwell currently living in Fair Play, SC

Robin Westergren Doua

770-655-5430

Robin@buyhartwelllake.com



- Born in South Carolina and raised in northern Greenville County I have many fond memories to reflect on. My parents built a cabin on Lake Hartwell in 1964 and we spent almost every weekend there until I graduated high school. It was there by the time I was ten years old that I learned to swim, drive boats and pull skiers. Lake Hartwell has had my heart all of these years and I always knew that, one day, I would move back.
- After living in Northern California in the early 1980's I moved to Marietta, GA in 1983 and became a licensed Realtor in 1986. My love of people, homes and architecture made this the perfect fit for me as a career. After 30 years of taking care of clients in the Atlanta area my husband Paul and I are moving back to Lake Hartwell. We both love boating and lake life and look forward to sharing it with clients and friends in the coming years.
- I am a licensed Realtor in Georgia and South Carolina.
- Over the years I have earned many designations in my career, but the thing that I treasure the most are the many friendships that I have made. Treating clients honestly and fairly while solving their Real Estate needs.....whether it be finding their dream home or making sure their rental properties are managed properly makes my job a dream come true.



Jean Maher

864-365-4036

Jean@buyhartwelllake.com



- I began my Real Estate career as a Realtor and Office Manager with a local Anderson County Real Estate firm that produced Real Estate sales upwards of \$35 million dollars from 1994 through 2000. I have over 30 years of experience working in Management including several years with two Fortune 500 Companies.
- Recently returning to the Upstate I have decided to continue my Real Estate career in the Greater Anderson, SC and Georgia areas. Originally from Southern New England my husband and our family find ourselves in South Carolina for the second time! Our love for Lake Hartwell and the surrounding areas have brought us back! We love boating and found ourselves enjoying Lake Harwell at every opportunity. We have purchased our new home on the shores of Lake Hartwell and are living the Dream!!

I am ready and available to offer my expertise, help and support with listing your property or purchasing your next dream home! Call today for your free market analysis to sell your home or information on purchasing that dream property!

Realtor Associations:

- National Association of Realtors
- South Carolina Association of Realtors
- Georgia Association of Realtors
- Western Upstate Association of Realtors

Sylvia Pintado

864-556-4436

sylvia@buyhartwelllake.com



- After being in Sales and Marketing in the print media industry for over 27 years, Sylvia Pintado has decided to follow her lifelong passion of becoming a Real Estate Professional.
 - Sylvia has always been successful in achieving her personal as well as her professional goals because of her desire to help other people and do what is right. She is very easy to talk to and always willing to listen.
 - Sylvia says “One of the most important transactions that people will do in their lifetime is the purchase of a home, my goal is to help them achieve that.”
 - Sylvia is the wife of 27 years to Jesse Pintado and mother to three wonderful children, Jesse (25), Stephanie (23), and Eddie (21) and let’s not forget the dog Miley, she is the princess of the house!
 - She says that it is with their love, support and faith in God that she maintains that motivation, dedication and discipline to do well and help others.
- She is truly excited to represent BuyHartwellLake LLC and assist you with any and all of your home buying or selling needs.