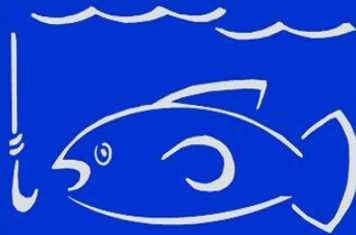


BuyHartwellLake

llc



1-855-BUY-LAKE



July 2015 Get Hooked On Lake Hartwell

Email your pictures of Hartwell to HartwellLakefront@gmail.com.
One will be selected every month for our cover.



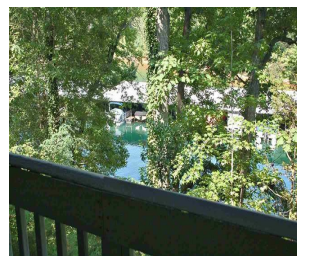
821 Dogwood Cove Seneca SC \$150,000 - Fantastic lake cottage close to Clemson by boat or car. Property features open living areas, wrap around deck and screen porch offering beautiful views of the water. Oversized parking pad for boats and extra cars. Nice easy walk to the dock. Great area for swimming, tubing, or fishing. Quick trip to Clemson Marina by boat for lunch, gas or supplies.



Lot 29 East Shore Drive Fair Play SC \$95,000 - Very gentle slope, great views, your own private boat ramp and nice water for swimming. Lot has been cleared and is ready to build on. Very few trees between building site and the water resulting in beautiful views. Older platform dock in place but a covered slip dock possible with corp approval. Convenient location 5 minutes off I-85 SC exit 4. Close to Anderson and Portman Marina. Wonderful opportunity for under 100K. Very easy to walk, well under brushed from the road to the lake. Water can be clearly seen from the road!



33 Harbor Gate Anderson SC \$129,000 - Nice one level condo on the main level, no steps. Residence is very well kept and features living area with lake views and a master bedroom with direct lakeside covered deck access. Unit is close to the community boat docks where slips can be rented or purchased. Convenient location less than five minutes from the interstate, Portman Marina, restaurants and several grocery stores. Complex has pool, club house and tennis courts. Great opportunity!



336 Dragonfly Cove Toccoa GA \$65,000 - Unrestricted 1.51 acre lot on Lake Hartwell. 100' of lakefront, verbal approval for a single slip covered dock from the Army COE. Level lot and good water.

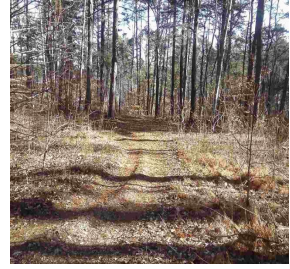


1123 Crestview Rd Anderson SC \$434,499 - Stunning country estate convenient to Anderson and I-85. 3.1 acres, beautiful in ground pool with wrought iron fencing, 3 Bedrooms, 3.5 baths and tons of flexible space - bonus room over garage in main house; sunroom with double sided brick fireplace shared with Great room, a 669 SF bonus room/in-law suite/apartment/office complete with a large bathroom. Inside the home you will find a great kitchen with new stainless appliances, solid wood cabinets and Silestone countertops. Breakfast room overlooks the deck and pool. Formal dining off entry that is open to the large great room with brick double sided fireplace with gas logs. Step from great room to sun porch where you will find the other side of the brick fireplace. 2.5 car attached garage + 3 car detached garage/workshop.





Lot 16 South River Trail Martin GA \$70,000 - Covered slip dock in place on very good water, nice easy sloped lot with super building site on a quiet secluded road. Convenient to Toccoa and close to Jenkins Ferry boat ramp. Ready to build your full time home or weekend retreat! Great spot for swimming, fishing or skiing. Lot 15 next door is .9 acres and is also available for 60K with a dock in place, purchase both and have a total of 1.7 acres for extra privacy!



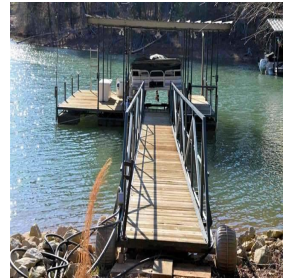
258 Horseshoe Bend Westminster SC \$300,000- This is the very definition of a lakefront retreat, private area, cedar shake siding, metal roof, magnificent lake views plus a large deck and screen porch. Home features wood floors, rock surround fireplace, open kitchen, master suite with beautiful views and french door access to deck, recreation room and lakeside patio. Covered slip dock in place on great water for swimming, fishing or skiing. Rip rap shoreline and light pole, power/water service run to the waters edge. Stunning sunset views over lake all year! Best of all, this home includes the furniture, washer, dryer, two refrigerators, gas grill, ice maker and all kitchen utensils. Close to Seneca, Toccoa or Westminster.



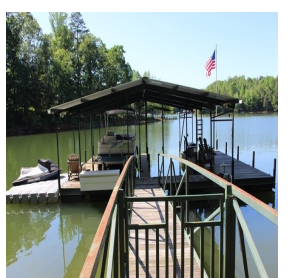
Lot 16 Huntington Rd Anderson SC \$189,000 - Drop Anchor you are home! This nicely sloping lake lot is situated in a very deep water cove just off Sailboat Waters of Lake Hartwell! You will like this small, comfortable subdivision for it is approximately 10 minutes to I-85, Portman Marina, restaurants, shopping, etc. Green Pond Boat Access is nearby. A 30x32 Covered Slip Dock is included. See associated docs for survey, dock permit and subdivision restrictions. Owner financing available.



304 Lakefront Dr Anderson SC \$434,900 - home has been freshly painted, has new kitchen cabinets and counter tops. Beautiful hardwood floors upstairs and upgraded laminate wood flooring in basement. Room to the right of the entry can be a formal dining room or library. Family room has double sided fireplace adjoining the kitchen dining area. Stairs lead to a bonus room over the garage, could be a 4th bedroom. Master on the main level and has an in suite bath with jetted tub and two sinks. Large rec room with a corner fireplace, cabinets, sink and refrigerator. In addition, there is a heated/cooled golf cart garage in addition to the attached 2 car garage upstairs. Short walk to the large dock with lift and swim deck.



858 Bulldog Circle Lavonia GA \$325,000 - Four Bedroom home on a lovely shaded lot with a DOUBLE COVERED SLIP DOCK. Open the front door and see straight through to gorgeous views of the lake. Open floor plan and great detail with beamed walls and ceiling. Large rock wood-burning fireplace in the great room, center island in kitchen and alk-in pantry. Lakeside screen porch invites you to come "sit a spell." Flat, green backyard for playing your favorite games. Just a few steps to the maximum-size dock with double jet-ski pad on deep water. Unfinished basement for storing your lake toys or setting up a workshop



Q&A With The Corp Of Engineers



I've heard of something called the "Res Sim Model." What is it and does the Corps use it to manage the Savannah River Basin?

HEC Res-Sim is a reservoir simulation model developed by the Hydrologic Engineering Center of the Corps of Engineers. This computer program allows us to simulate the reservoir system, apply different operating rules, and determine the impacts to various project purposes. The Savannah District currently uses Res-Sim in a planning mode rather than a real-time operating mode. Res-Sim will be one of the models used in the Savannah River Basin Comprehensive Study ("comp study") to evaluate changes to reservoir operations.

The Corps recently proposed a change to our understanding of actions it would take during Drought Level 4. What are the results of this Environmental Assessment?

In 2011 we evaluated the 1989 Savannah River Basin Drought Plan to determine if changes were warranted for operations in Drought Level 4: the inactive storage portion of reservoir water. Drought Level 4 occurs when the Hartwell reservoir is at or below 625 feet above mean sea level (ft-msl) or Thurmond reservoirs at or below 312 ft-msl.

The Savannah District, in conjunction with the public, and state and federal natural resource agencies, completed an Environmental Assessment (EA) addressing this issue in October 2011. This EA supports a Finding of No Significant Impact and clarifies actions to be taken in the unlikely event that drought conditions reach this unprecedented level. The primary focus of this EA was to clarify Drought Level 4 operations with the intent on preserving drinking water supply for the greatest population of basin residents.

The proposed Standard Operating Plan (SOP) for operations in Drought Level 4 retains all major components of the 1989 Drought Plan except for one. When Drought Level 4 conditions exist, the daily average release from Thurmond Dam would go to 3,600 cubic feet per second (cfs) and transition to 3,100 cfs with an adaptive management strategy during the period from Nov. 1 through Jan. 31. We would transition to a daily average outflow equals daily average inflow, if all the pools reach the bottom of their inactive storage. It's important to note that the Corps' drought management plan is designed to prevent the three-reservoir system from ever reaching Drought Level 4. The reservoirs have never reached Level 4.

Why did you spend time and money to update the level 4 actions, when you could have used that money to update the Drought Plan or work on the Savannah River Basin Comprehensive Study?

After the worst drought of record (2007 to 2009), we received Flood Control and Coastal Emergency (FCCE) funds to evaluate emergency drought operation plans. The FCCE monies were provided to the Savannah District to address a possible future drought even more severe than the one that ended in 2009. We are required to use the funds for that intended purpose only. The Savannah District expects to evaluate the entire drought plan in the next phase of the comprehensive study.



4-H₂O CAMP 2015

July 27-29, 9am-2pm

Serving Anderson, Greenville, Oconee and Pickens Counties



The 4-H₂O Camp is a day camp offered for youth ages 9-13. Lake Hartwell and local streams serve as the setting for this nature resources program.

The day camp will be held at the Clemson Outdoor Lab, 415 Charlie White Trail, Pendleton SC 29670. Registration is \$75.00 includes program supplies, snack and daily lunch. You must be a 4-H Member to participate. Join 4-H for a cost of \$10 (includes a 4-H t-shirt). Registration is limited to 18 paid registrants. Camp spots are secured when completed form and fee is received by the Pickens County Extension office. Registration fees can only be refunded under extenuating circumstances. Camp is rain or shine.

Registration Deadline: July 20th



Clemson University Cooperative Extension Service offers its programs to people of all ages, regardless of race, color, gender, religion, national origin, disability, political beliefs, sexual orientation, marital or family status and is an equal opportunity employer. Should you require special accommodations due to a disability, please notify our office at least ten days prior to the event.

Mail this form and fee to:

Pickens County 4-H
PO Box 995
Pickens, SC 29671
864-878-1394x114
rwatso2@clemson.edu

Checks should be made payable to Clemson University.

Name _____

Address _____

Email _____

Home Phone / Cell Phone _____

Youth Signature _____

Parent Signature _____

4-H₂O Registration

- Camp Registration \$75
- 4-H Membership \$10

Total: _____

T-Shirt Size:

YS YL YM YL AS AM AL

Fireworks Over Lake Hartwell

Friday, July 3rd, 2015 5:30pm - 10:00pm

On the evening before Independence Day, Clemsonfest kicks off numerous area festivals and is the only opportunity to see a major fireworks display over beautiful Lake Hartwell. Join thousands of revelers for family fun in the early evening with games, food and crafts. Later enjoy live music as the fireworks ring in the 4th.

Blankets and chairs are recommended but personal coolers and pets are prohibited. Admission is \$10 per car or \$5 on foot, with special rates for buses and church vans.



Campus Beach

**275 YMCA Circle,
Seneca, SC 29678**

Free Concert at Hartwell Marina July 3rd 7pm-9pm

Featuring Silvercreek



Silvercreek is a rock & roll / country music band from Atlanta, Georgia. The band's performances include classic rock, southern rock, country, and modern rock songs spanning over 60 years...from the 50's to the present!

Hosted by the Hartwell DDA. Food is available and just bring your chairs and your family.

Hartwell Marina
149 Hartwell Marina Road
Hartwell, GA 30643

Fishing Report

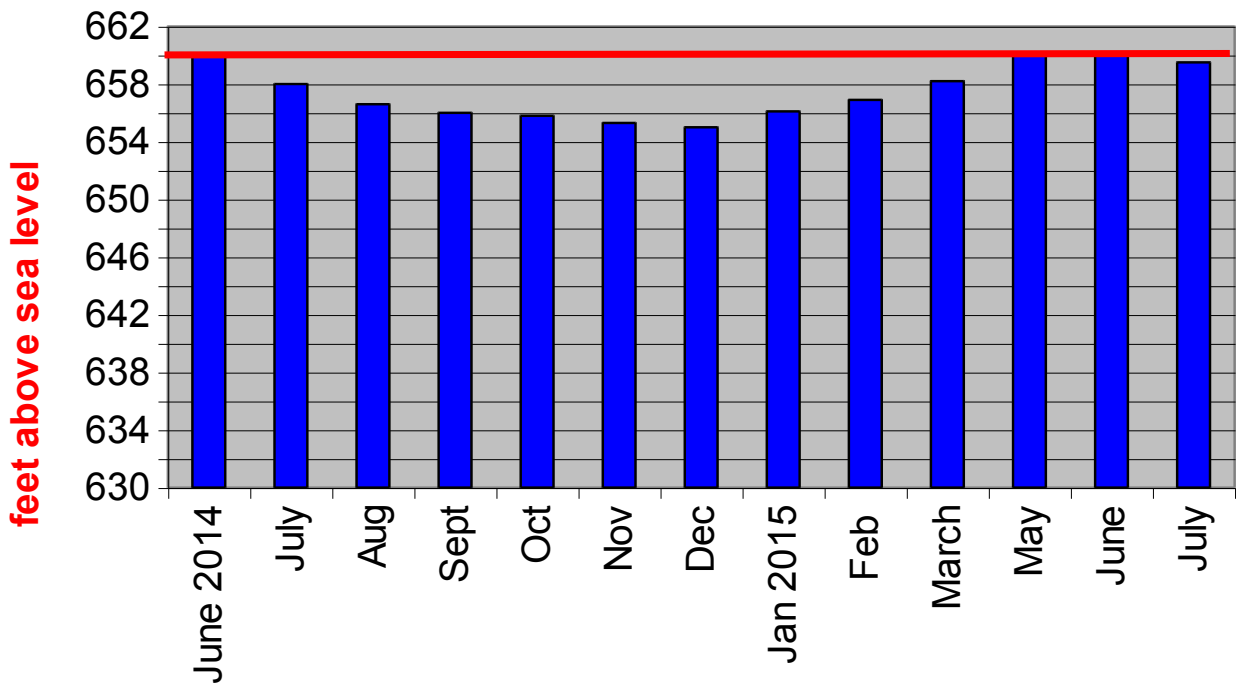
Lake Hartwell July 1st - 85 degrees

Bass fishing is fair early and then mid day get to the main lake points. Start with the Zoom trick worm in watermelon green or Zoom lizard Carolina rig on rocky points early in the morning focusing on water in the 12 to 20 foot range. Add some Jack's Juice in garlic and work the mid day areas slowly on the bottom and hit as many points as possible before the sun works its way over the trees. After the sun arrives concentrate on shooting or working as many docks as you can that are near deep water. Green pumpkin Zoom finesse worms on a spot stick or a dark jig will get some action. Mid day it is hot and the fish are deep and slow to bite. So wait until late afternoon and then get back to the lake with the points with rocks and wood as the targets. Go to the Zoom u tail worm in green or a Zoom black u tail and work the baits tight on cover.



Courtesy www.havefunfishing.com

Lake Hartwell Elevation (660 = Full)



Visit our Lake Hartwell Informational site!

LakeHartwellLiving.com

Interested in activities on and around Lake Hartwell? LakeHartwellLiving.com highlights current lake activities, events and news. You will find information concerning the corp of engineers, permit information and contact numbers for all the local service providers you may need. Also included are links to surrounding activities such as golf courses, waterfall hikes, campgrounds marinas

Lakefront Lodging Available at the Outdoor Lab

Surrounded by the Clemson forest and located on Lake Hartwell, the Clemson University Outdoor Lab offers a relaxing and inviting atmosphere for guests. Our comfortable accommodations are unlike any other in the area. Choose from suite or cabin-style lodging according to the needs of your group. Check-in is at 4:00 p.m. and check-out is at 11:00 a.m., but we are more than happy to accommodate any special requests (subject to availability).

Complimentary amenities include:

- Parking
- Wheel-chair accessible rooms
- High speed Internet access
- In room coffee service (suites only)
- Fire wood and fire pit
- Walking and nature trails
- Games fields
- 18-hole disc golf courses
- Horseshoes
- Tetherball
- Sand volleyball
- Basketball
- Four Square
- Thunderball



The Outdoor Lab has seventeen group cabins equipped with ten single beds and individual dressers. Each has a large, common bathroom and a central seating area. All of our cabins are fully carpeted and have heating, lighting, and Wi-Fi. Some cabins have air conditioning. Accompanied by large front porches with scenic lake and nature views, our cabins are perfect for families or groups.

Our suites consist of one or two bedrooms with deluxe queen or twin size beds. Each suite also has a separate living area with a desk, chairs, and a comfortable sofa. All of our rooms have central heat and air and are fully carpeted. Suites also include towels and linens, a coffee maker, mini-fridge, microwave, and Wi-Fi.



Visit www.clemson.edu/centers-institutes/outdoor-lab for complete details and rates

Reservations, please call 864-646-7502 or email at: reservations-L@clemson.edu.

Lakes Prepare for Busy Summer



As the temperatures rise and summer shifts into full gear, the recreation areas along the Savannah River Basin are, too.

And while it's still early in the season, Chrissy Alford, recreation chief ranger at J. Strom Thurmond Dam & Lake, has already noticed a difference.

"We've definitely had a lot of visitation compared to last year," Alford said. "In May alone the numbers are up 20 percent."

Alford attributed the uptick in visitors to the warm weather and the fact that the lake is sitting at full pool.

More than 70 miles upriver, Scott Kelley, natural resource program manager at Hartwell Dam and Lake, has a similar experience.

"It's been really busy thus far," Kelley said. "Weekend traffic has been heavy. Campgrounds and day-use areas seem busier than normal."

And as if the prime conditions weren't enough, special events at the recreation areas will give the public more reasons to enjoy the outdoors.

At Hartwell next week, June 27 from 8-10 p.m., the Hart County Chamber of Commerce will host a Pre-Fourth of July celebration at Big Oaks, which will include a fireworks display, along with myriad vendors selling everything from shave ice to barbecue to boiled peanuts.

Meanwhile, three Fourth of July events are in the works at Thurmond.

Thurmond Lake Sail & Power Squadron is planning a boat parade and beach party for July 4. The event will start at Dorn Fishing Facility, continue to Plum Branch Yacht Club, and finish at Savannah Lakes Marina Beach with a beach party. Smaller events at Thomson Boat Club, July 3, and Soap Creek Marina, July 11, are still in the planning phases.

Alford also said she and her team at Thurmond are starting to gear up for National Public Lands Day, held annually the last Saturday in September. On this day, volunteers focus on service projects to beautify a designated area in a park.

(Continued next page)

(continued from previous page)

Last year, Alford said more than 200 people sanded picnic tables, trimmed underbrush and picked up litter at Thurmond's West Dam Recreation Area. With all the fun in the sun, though, officials are reminding the public to enjoy the outdoors safely.

In February, Hartwell recorded one recreation-related fatality while four drownings at Thurmond stunned park employees and visitors before the midpoint of the recreation season.

Wearing properly sized lifejackets can thwart these preventable deaths, said Corps National Water Safety Program Manager Pam J. Doty.

"Guests should make sure life jackets are buckled and sized properly," Doty said. "Children should not wear life jackets that are too large because it will slip over their head if they fall in the water and they could drown. Life jackets are categorized by a person's weight, so check the label and test it to make sure it fits snug."

David Quebedeaux, a Corps park ranger at Thurmond, has already responded to several water-related accidents this year.

"We retrieved a couple of guys out of the lake who were lucky," he said. "They didn't have their life jackets on, but they were able to grab them as the boat was capsizing. They admitted if they did not have those life jackets, they would've drowned."

At all Savannah Corps lake sites, visitors swim at their own risk. The Corps encourages adults to watch children because most people drown within 10 feet of safety.

If scorching temperatures continue through the summer, finding resourceful ways to beat the heat will be as important as remaining safe while in the water.

Stay hydrated by drinking cool water, wear lightweight, light-colored and loose-fitting clothing, apply sunscreen of SPF 15 or higher, and limit outdoor activity to morning and evening hours. When camping, swimming or lounging at your favorite day-use area, find shady areas to cool-off, rest and recharge.

For the full scoop on upcoming events, contact the recreation area's visitor center: Hartwell, J. Strom Thurmond, and Richard B. Russell. Find more heat safety tips at the Centers for Disease and Control Prevention website.

Editor's Note: Chelsea Smith contributed reporting.

~Jeremy S. Buddemeier, Corporate Communications Office, COE



The Lake Hartwell Association was founded in 1990 and today has 2000 family and business memberships. LHA exists to protect the quality and quantity of water resources in Hartwell Lake and its watershed; to provide a forum for discussion and action on lake-related issues; and to influence positive growth and development while preserving the quality of life for all lake users. LHA serves the best interests of lake area residents, recreational users and businesses.

The Lake Hartwell Association is managed entirely by volunteers and is a 501(c)3 qualified non-profit organization. LHA is supported almost exclusively through member dues and donations which are fully tax deductible. Members are encouraged to join one of the many LHA committees which offer interesting challenges and provide much valuable information on lake and water issues.

LHA members receive valuable and interesting information through our quarterly newsletters, email communication on current and critical issues, access to our comprehensive website and an opportunity to network with other members, area elected representatives, and agency personnel at our annual meetings and various forums.



If you are a permanent or part-time lake area resident, recreational lake user or lake area business, we encourage you to join the Lake Hartwell Association, and support our efforts “for the sake of the lake.” To join, renew your membership, or to simply make a contribution to LHA, go to:

www.lakehartwellassociation.org

Clemson University Wins FLW College Fishing Finale On Lake Hartwell

The Clemson University team of Ross Burns of Columbia, South Carolina, and Isaac Nesbitt, Aiken, South Carolina, won the FLW College Fishing Southeastern Conference tournament on Lake Hartwell Saturday with five bass weighing 16 pounds, 15 ounces. The victory earned the club \$2,000 and advanced the team to the FLW College Fishing Southeastern Conference Championship.

“This win means a lot for our club,” said Nesbitt, a senior majoring in mechanical engineering. “We’re one of the most consistent schools in the country when it comes to strong finishes, but we haven’t had that breakthrough win yet. I feel like today’s victory was the statement we needed to make.”

“I couldn’t be happier with how our tournament unfolded,” said Burns, a senior majoring in environmental engineering. “We dialed in on the bite early and were able to catch fish throughout the day.”

The duo said they targeted schooling fish deep on humps and points near Andersonville Island.

“We hit five spots that had similar structure,” said Burns. “We sat in 60 to 80 feet of water and casted to the fish which were congregating in 20 to 40 feet of water.”

Nesbitt said they both used one lure to catch their winning stringer - a Lake Murray Clear-colored Lucky Craft Gunfish.

“We also threw a Lucky Craft Sammy in the same color to catch some of our 20 keepers, but the winners came on the Gunfish,” said Nesbitt.

“A lot of people say the topwater bite on Hartwell stops at 8 a.m., but we were one of the few teams that kept using one,” said Nesbitt. “Structure is important but bass are very strategic in how they eat. Understanding those feeding patterns on this lake really helped us.”

This FLW College Fishing Southeastern Conference tournament was hosted by the Hart County Chamber of Commerce and was the third and final regular-season qualifying tournament. The next event for the Southeastern Conference anglers is the Conference Championship which is scheduled for September 26-27 at Pickwick Lake in Florence, Alabama.

FLW College Fishing teams compete in qualifying tournaments in one of five conferences – Central, Northern, Southern, Southeastern and Western. The top fifteen teams from each regular-season tournament will qualify for one of five Conference Championship tournaments. The top ten teams from each of the five Conference Championship tournaments will advance to the 2016 FLW College Fishing National Championship.



For The Kids

Celebrate a
SAFE & HAPPY
JULY 4TH!



Word Search



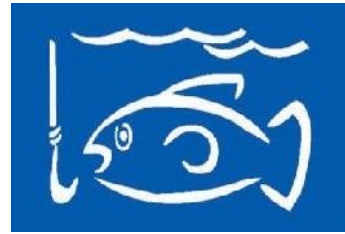
See how many of these newspaper related words you can find in the puzzle.
The words can be forward, backward or diagonal.

Created by Sue Lindlauf
Grand Forks Herald 2012

- | | | | |
|------------|--------------|-----------------|------------------|
| 1. FOURTH | 5. DAY | 9. CELEBRATION | 13. INDEPENDENCE |
| 2. JULY | 6. PICNICS | 10. PARADES | 14. AMERICA |
| 3. HOLIDAY | 7. FIREWORKS | 11. FAMILY | 15. PATRIOTIC |
| 4. FLAG | 8. SAFETY | 12. DECLARATION | 16. FREEDOM |

BuyHartwellLake LLC

1-855-Buy-Lake



- We know the lake, our experience allows us to evaluate your needs and quickly identify properties that make sense for you.
- We have the largest inventory and selection of properties listed on Lake Hartwell. Over 30 million dollars as of 6/1/2015.
- Every partner in our company is a full time resident on Lake Hartwell
- All partners have more than 15 years experience selling and listing property on Hartwell.
- All homes and lots are listed in both the SC and GA MLS for maximum exposure.
- Our site www.BuyHartwellLake.com is typically listed first on the first page of virtually all google searches for Lake Hartwell homes and lots.
- We have a one million+ email database of the prime Lake Hartwell purchasing demographic for marketing puposes.
- All listings are submitted to 800+ websites including our flagship site BuyHartwellLake.com. Over 100 million prospects visit our network of partnered websites every month! You will be seen!
- Our monthly newsletter features listings, corp news, lake events and is distributed to thousands of lakefront property owners and a database of clients interested in owning lakefront property.
- Need a different perspective? We offer property viewing by boat. This can give you a unique look at a particular home or lot that you're considering.
- Would you like your lake home to produce cash? We market and manage lakefront rentals and off lake properties.

Call us anytime to discuss your situation
1-855-Buy-Lake



Patty and Don Cleveland

- Members of both SC Western Upstate & the GA MLS
- Multi-Million Dollar Producers and Accredited Buyers Representative
- Specialization: We all specialize in property on and around Lake Hartwell, Lake Keowee and other surrounding lakes. We pride ourselves in keeping abreast of the market of both what is new and what has sold. We want to be well informed so as to give you the best service possible. Our motto is "If we don't take care of our customers, someone else will".
- Personal: We have lived on Lake Hartwell for a number of years owning property in both

Georgia and South Carolina. We know Hartwell! Whether you are looking to be on the lake or in a lake accessible area, we can help you. Once you narrow your search down, we can show you property by boat. If you are looking to sell, please let us meet with you and show you our marketing plan. Many of our clients are referred to us by previous clients. Let our dream of lake living be yours as well



Kyle Corbett

- Listing Specialist–Aggressive Marketing Plan for Lake Property & Homes.
- Listing Sales Rate 36% GREATER than the lakefront market average
- Full time resident on Lake Hartwell for the last 23 years
- Licensed in SC and GA – Multi Million Dollar Producer
- I bought my first lake cabin in 1992 a few years after graduating from Clemson University. 23 years later I am married with three boys and

we

spend a great deal of our free time skiing, tubing, knee boarding and kayaking.

- I have a marketing plan which is second to none and gives our sellers an upper hand when it comes to listing their property. As a result, my listing sales rate for homes is 36% GREATER than the market average. Why? Because we do more! My approach is based on years of experience, research and knowledge of buying trends. I do not just put sign in the yard and just walk away, I spend time everyday with every listing making sure it is best positioned to get maximum exposure. Allow me to determine the value of your lakefront property - 864.376.9163.





Debbie Henderson

- Licensed in Georgia and South Carolina
- Member of the Georgia and Western Upstate MLS
- Accredited Buyers Representative
- I grew up water skiing with my family and now enjoy living on Lake Hartwell and being involved in the Toccoa, GA community as a CASA volunteer and mentor. The lake has proven to be a great place to relax and

refresh, to play and enjoy nature and to entertain and connect with family and friends. I've been involved in building custom homes for 20 years, including the last 8 on the lake. That, combined with other sales and marketing experience, makes me uniquely qualified to help you sell your current home or help you find your own private retreat on the lake.

I look forward to working with you to make your lake living dreams come true! Call me anytime at 404-313-4404.



Judy Stevanovich

- I was born and raised in Anderson. After a 32-year career in Corporate America and many relocations, I came home to Anderson in 2005.
- My Marketing, Sales, Finance, Human Resources, and Administration background in Corporate America has been immediately put to work in Real Estate.
- My husband Steve and I live in Stone Creek Cove in Anderson on the shores of gorgeous Lake Hartwell. Steve is an artist and when he is not in his studio there is only one place to look - - the golf course. We both love being in Anderson.
- I obtained my Accredited Buyer's Representative (ABR) and my Senior's Real Estate Specialist (SRES) certifications in 2014.
- My sub-company is the Upstate A Team and my slogan is "Real Estate With a Difference!" Call me today and you will be able to experience first hand the processes I have put in place to quickly find you the perfect property or determine the market value to sell the property you have today. For more info, see my website www.upstateateam.com. Telephone: (864) 276-7416; E-Mail: jstevano@charter.net.
- Call me today and experience, "Real Estate With A Difference.!"

