

BuyHartwellLake.com
1.855.BUY.LAKE^{llc}



November 2014
Get Hooked On Lake Hartwell

Email your pictures of Hartwell to HartwellLakefront@gmail.com.
One will be selected every month for our cover.

**New Listings
Of the Month**

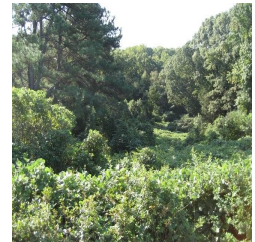


**BuyHartellLake.com
1-855-Buy-Lake**

79 Deer Run Anderson SC \$75,000– Horses Allowed!



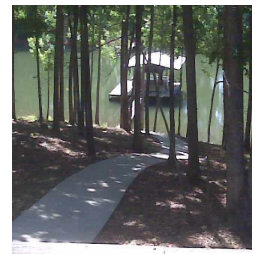
Deer Run includes walking/horse trails, a common lakeside pavilion area with fire pit for gatherings, boat/trailer/RV storage and last but not least comfortable living. Oversized lots give plenty of privacy from neighbors. This 2.66 acre interior lot includes a DEEDED BOAT SLIP located at Dock C. Conveniently located within 10 minutes of shopping/Portman Marina/Restaurants.



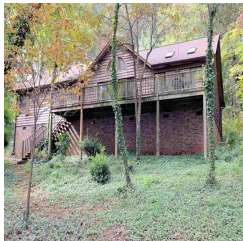
220 Bailey Townville SC \$215,000- Fantastic opportunity!



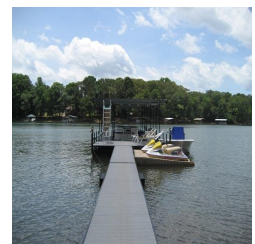
Two homes on one lot, the first is three bedrooms with vaulted ceilings, fireplace, garden tub, open kitchen, and wrap around deck. The second home has a garage, workshop, tile floors, crown moldings, one bedroom, 9 foot ceilings, large kitchen, and den. Covered slip dock in place on deep water(12+ feet under swim ladder), concrete golf cart path, Super area near big water, Portman Marina, and I-85.



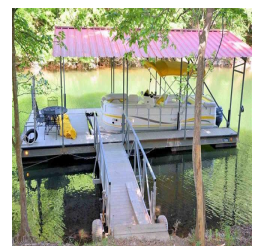
704 Jackson Anderson SC \$349,900– Cedar lakefront home. Kitchen, living and dining room have that open floor plan for great entertaining. Beautiful hardwoods in entry, dining and living room. Beautiful masonry fireplace and sliding doors to the deck that provide additional entertainment space and a great space to enjoy the lake views and serenity of this great lot. Split floor plan with large master, and bath. Easy walk to the covered slip dock on great water.



120 Point Lookout Townville SC \$259,900- TWO HOMES IN ONE...WITH 2 KITCHENS...MOST FURNISHINGS INCLUDED! This level lot offers unobstructed Lake Hartwell views. The main level includes 3 bedrooms/1 bath with open living/dining area along with a nice size deck. Downstairs includes another open living /dining area with full kitchen, bedroom, bathroom and electric fireplace. Covered slip dock in place with boat lift and 2 jet ski lifts.



430 Carole Ave Anderson SC \$349,900-Open floor plan, large great room, screened porch and deck overlooking the lake. Stacked stone fireplace with gas logs. Kitchen has custom maple cabinets with upgraded moldings and hardware. Split floor plan. 2 nice size guest bedrooms and guest bath on one side of the home with a large master bedroom with sitting area and in suite bath on the other. Slip dock just a short walk or golf cart ride away.



See all our listings at www.BuyHartwellLake.com

Q&A With The Corp Of Engineers



What is conservation storage?

Conservation storage is that portion of range of depth in the reservoirs designed to conserve, or store, water during normal periods for use during low flow periods. Other than flood risk management, the conservation pool fulfills the congressionally authorized purposes of water supply, water quality, downstream navigation, recreation, fish and wildlife management, and hydropower production.

The top of conservation storage marks the bottom of the “flood storage,” where excess water would be kept temporarily following heavy storms. Also, the bottom of conservation storage marks the top of the inactive storage pool – that part of the reservoir designed for storing sediment, typically holding lower quality water due to its depth.

Why can you draw Hartwell down so far, and Thurmond only half that?

While the Hartwell and Thurmond pools have roughly the same volume, there is more depth and less surface area at Hartwell. This is because Hartwell, being farther upstream is located in steeper terrain.

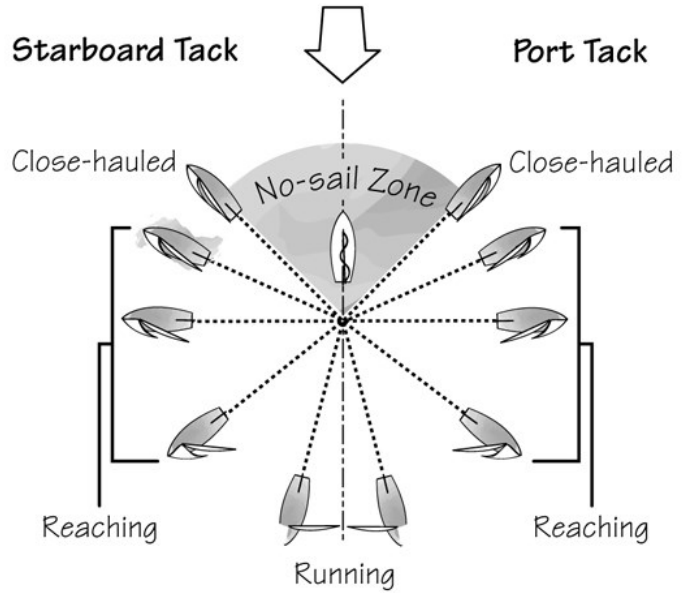
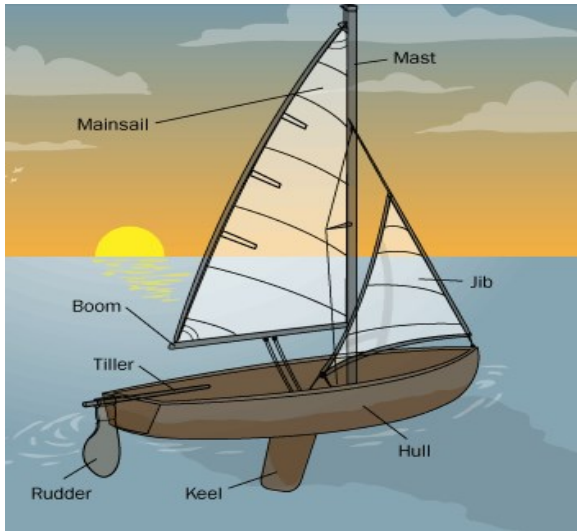
To meet downstream needs during a drought, the Corps initially brings Hartwell Lake and Thurmond Lake down equally, foot-by-foot. However, when Thurmond falls below 315 feet above mean sea level (ft-msl), water managers can no longer match the pool level foot-by-foot. Instead the Corps changes to an equal percentage of elevation remaining in their respective conservation pools. This means Hartwell Lake’s greater depth of conservation storage must provide more of the downstream water supply needs once Thurmond Lake falls below 315 ft-msl.

I notice that you raise and lower the pool behind the New Savannah Bluff Lock & Dam occasionally for weed eradication or to support special events like boat races in Augusta. How does this change the outflows from the Thurmond Dam?

The gates at the New Savannah Bluff Lock & Dam are adjustable. We adjust the gates at the NSBL&D to raise or lower the pool behind it. We do not change the discharge from Thurmond Lake to raise or lower the pool behind the lock and dam during drought.

- See more at: <http://balancingthebasin.armylive.dodlive.mil/FAQ/#sthash.9uu5pkcg.dpuf>

Sailing For Dummies



Jibing

1. Say "Ready to jibe" to alert your crew, and then say "jibing" as you begin turning the boat away from the wind.
2. Say "Boom coming across" as you pull the main over to the new side.
3. Let the main out on the new jibe, and trim the jib on the new leeward side.



Tacking

3. Trim the new jib sheet, and keep turning until your sails are full on the new tack.
2. Keep turning the boat as the sails begin to luff; release the jib sheet; the crew and skipper switch sides.
1. Say "Ready to tack" to alert your crew, and then say "tacking" as you start turning the boat into the wind.

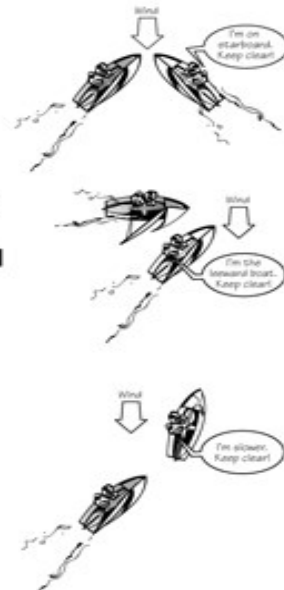


For all boats:

1. **Moving boats must avoid stopped boats.**
2. **Large ships have right-of-way in confined areas, such as a channel.**
Large ships and boats towing other boats can't turn or slow down easily.
3. **Sailboats have right-of-way over powerboats (except for under Rule #2).**
4. **All boats should maintain a proper lookout.**
5. **If you need to make a course change to avoid a collision, turn early and make a large turn so that the other boat clearly understands your intention.**
6. **You must stay more than 100 yards from any U.S. Navy ship, and within 500 yards you must slow down to minimum speed.**

When two sailboats meet:

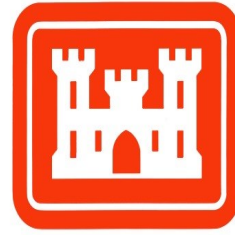
1. **The boat on starboard tack has right-of-way over the boat on port tack.**
2. **The leeward boat has right-of-way over the windward boat.**
3. **An overtaking boat has to keep clear.**



New operating agreement advances collaborative management of SRB water resources

Representatives from the U.S. Army Corps of Engineers (USACE), Southeastern Power Administration (SEPA), and Duke Energy signed a new operating agreement in Elberton, Georgia, Oct. 17 defining how water resources will be shared among the Duke Energy and Corps reservoirs in the Savannah River Basin. This operating agreement will increase drought tolerance within the watershed and promote conservation efforts.

The agreement encompasses the reservoirs in Duke Energy's Keowee-Toxaway Project (Lakes Jocassee and Keowee) and Bad Creek Reservoir, and the Corps' reservoirs (Lakes Hartwell, Russell and Thurmond).



**U.S. Army Corps
of Engineers®**

“We believe this new agreement represents a balanced approach to managing our respective hydroelectric reservoirs in the Upper Savannah River Basin during droughts,” explained Steve Jester, Duke Energy’s vice president of water strategy, hydro relicensing and lake services. “We worked very closely with the U.S. Army Corps of Engineers and the Southeastern Power Administration to develop the agreement and look forward to continuing the partnership.” “Good stewardship of the basin’s freshwater resource is one of our highest priorities, and this agreement advances that effort,” said Stan Simpson, Savannah District’s senior water manager. “We are committed partners with SEPA and Duke. We are proud to work with them to provide innovative solutions to operational needs as well as basin needs.”

The new operating agreement supersedes a 1968 agreement put in place to ensure proportionate use of water resources during drought at both the Corps’ reservoirs and Duke Energy’s reservoirs. Since 1968 there have been many changes in both the Corps and Duke Energy systems without modification to the operating agreement. For example, the Corps and Duke Energy have each constructed an additional reservoir since 1968 in the Savannah River Basin. Both reservoirs incorporate pumped storage capabilities that affect operation of their systems. The Corps constructed the Richard B. Russell Pumped Storage Project; Duke Energy constructed the Bad Creek Pumped Storage Project and the Oconee Nuclear Station. The Corps also modified its reservoir operations through implementation of a drought contingency plan, with the latest update occurring in July 2012.

While the new agreement still balances the percent of remaining usable water resources between Duke Energy and Corps reservoirs, it also incorporates Duke Energy’s drought tolerance measures (Low Inflow Protocol) to coordinate drought mitigation measures in the upper basin. This results in a more resilient operation, more prudent water conservation and accounts for the new pumped storage facilities in the basin. The new agreement is consistent with the Keowee-Toxaway Relicensing Agreement, and it allows Duke Energy to make flow releases to support downstream water needs deeper into severe droughts than the 1968 agreement.

The new agreement incorporates the Corps’ 2012 Drought Plan so that minimum outflows from Thurmond Dam will remain the same. The agreement was also designed to be environmentally friendly. An Environmental Assessment demonstrates the new Operating Agreement would result in no significant environmental impacts and represents sound natural resource management practices and environmental standards.



The Grill Man
1500 Providence Church Road
Anderson, SC 29626
Telephone: (864) 222-2022
Hours: Thursday & Friday, 5 pm – 9 pm
Saturday, 12 noon – 9 pm
Sunday – Seasonal – Call for Hours

Jason and Tricia Parrish are the owners and operators of The Grill Man Restaurant located in the Stone Creek Cove Clubhouse off Providence Church Road in Anderson, SC and OPEN TO THE PUBLIC. They have operated The Grill Man for the past 2 ½ years and the restaurant is open year round. Jason and Tricia bring their many years of “fine dining” restaurant experience to the casual lakeside dining at The Grill Man. Jason served as chef at Still Water Ale House, JAX Bistro Downtown, and The Hearth Room at the Galley in Anderson. Tricia has been in the restaurant business for many years as well and is also a Veterinary Technician. Together they have over 30 years experience in fine dining that started in Mississippi where they are from. Before opening the doors at The Grill Man, they operated only during the summer on the deck of the clubhouse serving great sandwiches burgers. When they opened the restaurant they kept the name, added some unique full course dinners, a full service bar and expanded the outdoor dining areas where dogs are also welcome.

The restaurant is located on the shores of Lake Hartwell and in the Spring, Summer and early Fall much of the business coming into The Grill Man is from boaters who tie up at the dock and come in for “Great Food and Good Times.” The winter, however, is also a great time to come to the Grill Man. Just drive down Providence Church Road, pass the golf course pro-shop, and the restaurant is located on the right beside the Stone Creek Cove Swimming Pool. The menu changes seasonally and they offer the same great summer offerings with some additions of more hearty fare for those cold winter evenings. The winter is also a great time to enjoy the wonderful soups and daily specials only Jason can prepare. Last weekend the Soup of the Day was a Loaded Baked Potato soup with bacon, potatoes, cream, 3 kinds of cheese, and chives. Every weekend, specials are offered that allow Jason to use his and Tricia’s many years of fine dining experience to create dishes that are very pleasing to the palate. On Thursday, there is a Filet special with a 6 oz. filet, baked potato, and salad for \$13.95. Every dish is prepared fresh so it may take a little longer than some of the larger restaurants but it is worth the wait. Just enjoy your favorite beer or cocktail while The Grill Man works his magic.

There are TV’s located throughout the restaurant so it is a perfect place to come with a group of friends and enjoy watching your favorite football team.

Jason makes the best desserts anywhere. Ever tried Maple Bacon Cheesecake? If not, you need to give Jason’s a try. Seems like a funny combination but as with all of the dishes at this restaurant it is unbelievably good. In the past few weeks the dessert offerings have included Peanut Butter and Jelly Cheesecake, Triple Chocolate Cheesecake, Key Lime Cheesecake, Pumpkin Cheesecake as well as some of the best cakes and other desserts you can find anywhere.

During the holiday season, The Grill Man can help you plan a holiday party at the restaurant or prepare the food for pickup. There is plenty of room at the restaurant to have a great party. They can also help you with that Thanksgiving and/or Christmas dinner. Whether it be preparing a pan of southern dressing, a special casserole, or a unique flavored cheesecake – just give them a call and let them help you remove some of the stress so you can enjoy the holidays.

Jason and Tricia have also helped in the planning and hosting of great birthday parties, weddings, anniversary celebrations, high school reunions, family reunions, etc. - - whatever you want to do they can help.

The Grill Man is located off the beaten path but it is worth the drive. Come out and enjoy the best food around and a wonderful atmosphere at this great restaurant. “Great Food and Good Times” – that’s The Grill Man.

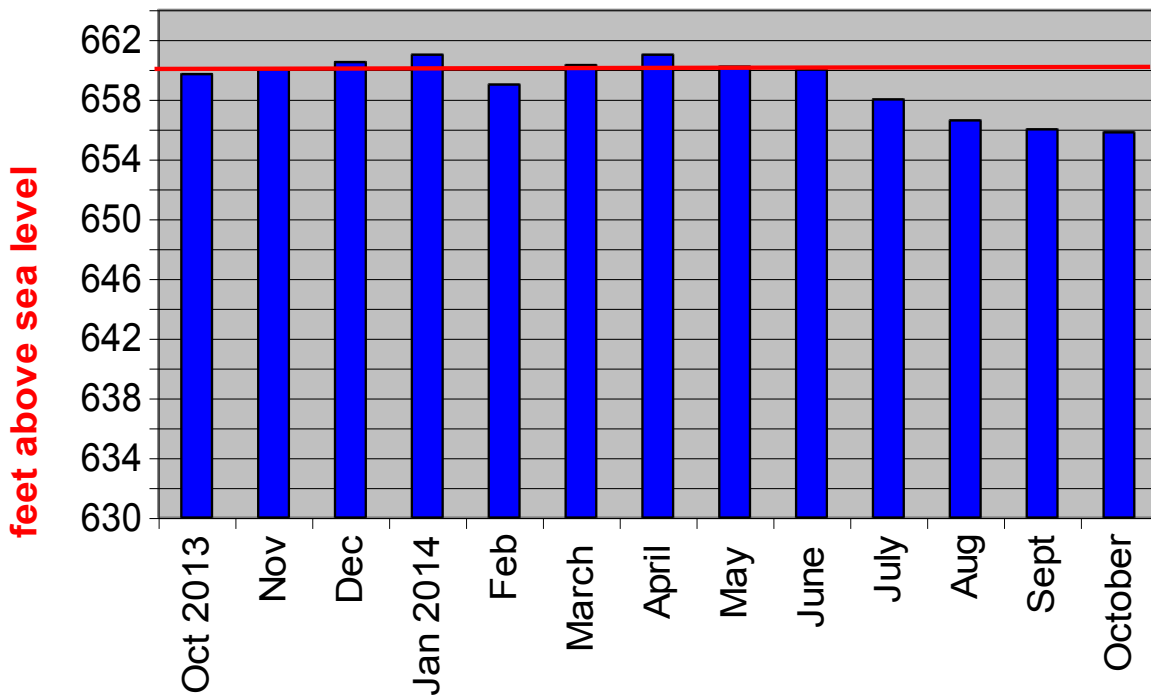
Fishing Report

Lake Hartwell November 1st - 66 degrees

Bass fishing is good. More and more of these fish are moving up to feed on anything and everything they can find, especially small shad. Water temperatures will continue to drop as lower nightly temperatures hit hard across the lake. Use the Husky jerk baits, spinner baits and crank baits. Fish the rocks mixed with wood as well as the wind blown banks and coves. The shad are small in size, but they will grow fast during the fall. Look for the shad along the banks near rocks and out on the points.



Lake Hartwell Elevation (660 = Full)



Visit our Lake Hartwell Informational site!

LakeHartwellLiving.com

Interested in activities on and around Lake Hartwell? LakeHartwellLiving.com highlights current lake activities, events and news. You will find information concerning the corp of engineers, permit information and contact numbers for all the local service providers you may need. Also included are links to surrounding activities such as golf courses, waterfall hikes, campgrounds marinas

Fishers of Men Tournament Moving to Hartwell

A previously scheduled Fishers of Men National Tournament Trail event on High Rock Lake in Salisbury, NC, will now be on Lake Hartwell. The event will take place November 11-15, 2014 and will launch out of Portman Marina. Anglers will pre-fish for three days then compete for up to \$10,000 in cash and additional prizes from sponsors like Skeeter Boats, Mercury Outboards & Stren Fishing Line on November 14th & 15th. Based on averages at the divisional level and surveys in previous post season events, expected participation in that event is approximately 140-160 anglers. The public is welcome to come and watch the weigh-ins on those two days beginning at 3:00 pm at Portman Marina.

Vice President of Fishers of Men National Tournament Trail Bobby Eads reached out to Visit Anderson last week “We were really put in a bind by circumstances beyond our control, and needed a new venue for this event on very short notice.” said Eads, “Fishers of Men National Tournament Trail is very happy to be bringing one of our District Championships to Lake Hartwell & Anderson County. We’ve been looking to come back to Lake Hartwell for quite some time, but until now it just hadn’t worked out. We needed a great lake for this event, that’s when Jennifer Norman and Councilman Ken Waters stepped up and welcomed us into Anderson County.”



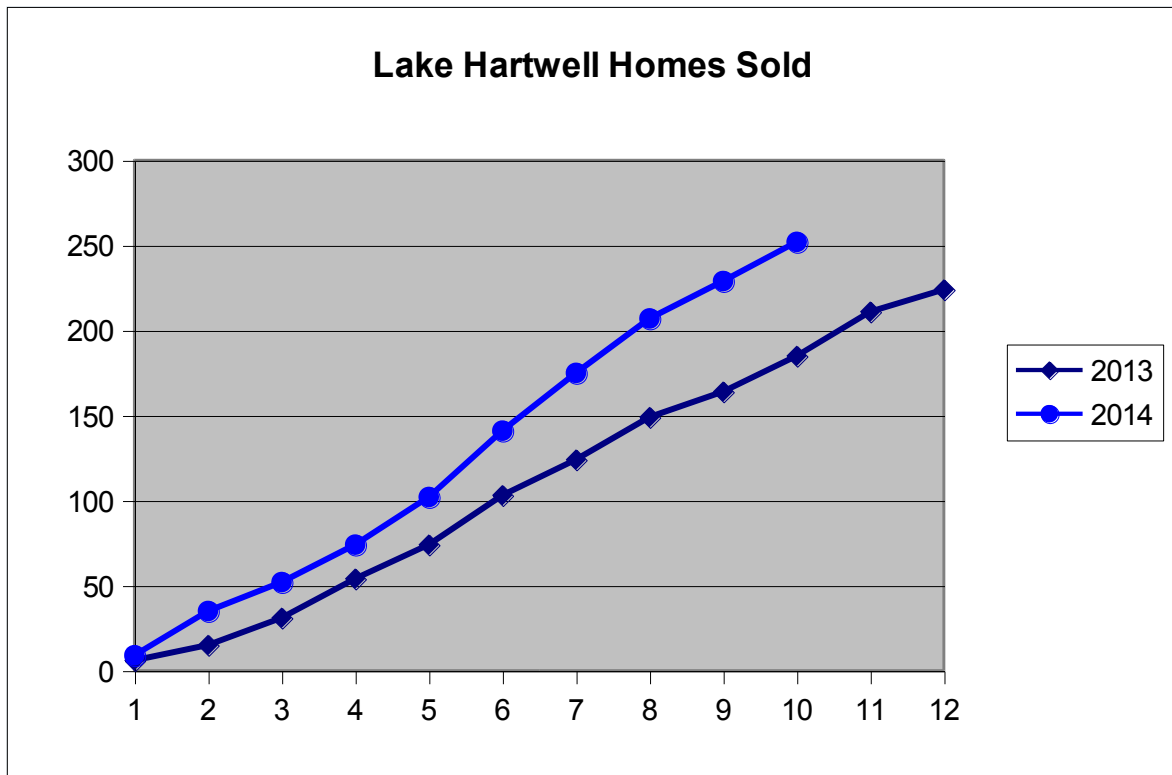
“We were thrilled to be able to help Bobby move this tournament to Lake Hartwell, this is a great event for Anderson. Our relationship with Fishers of Men over the years kept us on the radar when Mr. Eads needed a host lake” stated Jennifer Norman, Executive Director of Visit Anderson.

Some of the best bass anglers in the region will be competing in the event for cash prizes and the coveted berths in the Fishers of Men National Championship. All teams who have entered at least 3 FOM Team Series regular season tournaments within a division and have finished in the top 80% of the 2014 season standings for that division are eligible to enter their respective District Championship.

About Visit Anderson- Visit Anderson was established to market and promote Anderson as a destination for tourist and events. The Visitors Center at 110 Federal Street welcomes thousands of visitors each year with maps, travel brochures and current event information. CVB staff work to recruit tourist, sporting events, group meetings and family reunions to the Anderson area. For more information: visit www.visitanderson.com or www.facebook.com/visitandersonsc

Courtesy Jennifer Norman at <http://upstatebizsc.whosonthemove.com/>

Lake Home Sales On The Rebound



Hartwell's Annual Home for the Holidays

November 28 (Friday after Thanksgiving)

From 6:00 PM-9:00 PM. Hartwell's Main Street's traditional Christmas tree lighting with horse drawn carriage rides, seasonal music, 6:00 PM the Lighting of the Tree, 6:30 PM Santa and elves/time with children. Bring your cameras. The event closes with a community Christmas carol sing along. Contact Downtown Development Authority at 706-376-7168 or hartwellmainstreet@hartcom.net, or www.hartwellmainstreet.com



Clemson Student Memorial 5k on Lake Hartwell

Sunday, November 9, 2014 - 10:00 AM EST

The Student Memorial Chapel and Garden is a proposed on campus building where students of all faiths can come to pray, meditate, or just remember those students who have passed away before their expected graduation date. The idea for a place like this on Clemson's campus originated in the mid 1990's, but after seven student deaths during the 2007 school year, the need for a place like this on Clemson's campus was never more evident. With the proposed location of the chapel in between the Brooks Center and the Strom Thurmond Institute, the chapel would provide a place of peace and tranquility amidst the sometimes hectic and confusing times of college, as well as serve as a memorial to members of the Clemson Family who were never able to become alumni.



The course will include a one mile stretch along Lake Hartwell

The 15 member student committee that leads the effort to see this dream brought to life, has spearheaded many efforts to raise awareness and support for a crucial part of campus that is missing. Up until this point, students alone have raised over \$200,000 for the chapel and garden, and events like the Student Memorial 5k are a huge reason why this project has so much support. See <http://raceroster.com/events/2014/3334/clemson-student-memorial-5k> for full details and registration.



Hike or Bike Issaqueena Lake trail by Lake Hartwell

This trail is the most popular ride at Issaqueena Lake, and for good reason. The extremely fast singletrack combined with the scenic miles along the lake make an excellent ride. Before you begin this loop, spread out a picnic on one of the tables at the recreation area and take some time to



Water flowing from Issaqueena Dam into Lake Hartwell

appreciate this rehabilitated forest. While relatively flat, this singletrack requires a moderate degree of technical skill, which is why this stretch is used by the Clemson Cycling Club as part of a race course. Slow down when you reach the lake to wind in and out of the lakeside coves. Early morning fog often hangs above the water— a spectacular scene in autumn. Tread: Singletrack with a .6 mile on old roadbed.

Dir: Hwy 123 from Clemson to Hwy 133 and continue approximately 3 miles, turn left onto Old Six Mile Rd. and continue for about 2 miles and take a left into the parking area.

For more details and maps visit: <http://clemsontrails.blogspot.com/p/botanical-gardens.html>

Get Hooked on Lake Hartwell

JOIN →

BuyHartwellLake.com
llc



1.855.BUY.LAKE

**AT THE ATLANTA
BOAT SHOW**

January 15-18, 2015
Georgia World Congress Center



Lake...Golf...Fishing...Skiing...Relaxing
Lake Homes, Cottages, Condos, Lots

Selling Real Estate on and around Lake Hartwell and
surrounding lakes-Keowee, Secession, Broadway

Licensed In SC and GA

NEED TICKETS?

Call us Today

We Have A Limited #

Note: Our Clients Will be Given
"First Dibs" on Available Tickets.

NOW IS THE TIME TO LIST YOUR PROPERTY
TO BE FEATURED AT THE SHOW

- We participate in this event because many Lake Hartwell Property Buyers are from Atlanta!
- Last year we were the only Lake Hartwell Real Estate Agency at the show!
- Potential buyers will have access to all of our listings as they visit our booth!
- If your property is listed with us at the time of the show, congratulations. It will be featured at the show!
- Are you thinking about listing your property! **DON'T MISS THIS OPPORTUNITY!**
- Call 1-855-BUY-Lake or (864) 225-2410 To LIST YOUR PROPERTY TODAY!



Created by
Sue Lindblad
Grand Forks Herald
2010

HAPPY THANKSGIVING WORD SEARCH

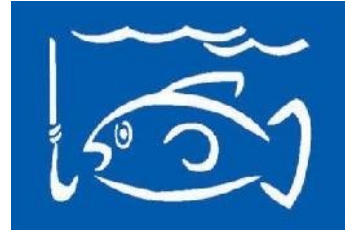
P	C	O	W	X	Y	W	O	C	O	W	X	Y	W	W
U	H	K	E	A	U	L	U	F	K	N	A	H	T	E
M	V	O	I	S	T	U	F	F	I	N	G	F	D	D
P	M	J	L	W	M	C	K	Y	J	T	W	A	C	B
K	T	A	U	I	K	N	J	T	G	U	D	M	N	R
I	N	M	H	C	D	G	M	U	M	Y	E	I	G	E
N	R	V	I	E	O	A	H	R	V	I	E	L	J	A
Q	E	B	O	R	L	D	Y	K	P	O	R	Y	D	D
F	R	I	E	N	D	S	A	E	I	P	F	P	K	D
S	Q	U	L	B	L	L	S	Y	U	L	B	L	L	O
W	A	Y	G	S	E	O	T	A	T	O	P	A	O	O
X	S	A	L	A	D	I	X	S	T	K	G	Q	I	F
D	Y	A	M	A	D	S	D	D	R	M	B	Z	U	U
F	L	T	H	A	N	K	S	G	I	V	I	N	G	Y
G	P	Q	C	H	S	E	L	B	A	T	E	G	E	V

See how many of these words you can find in the puzzle. The words can be forward, backward or diagonal.

- | | | | |
|-----------------|-------------|-------------|----------------|
| 1. THANKSGIVING | 5. THANKFUL | 9. STUFFING | 13. PUMPKIN |
| 2. HOLIDAY | 6. FOOD | 10. SALAD | 14. PIE |
| 3. FAMILY | 7. TURKEY | 11. BREAD | 15. VEGETABLES |
| 4. FRIENDS | 8. POTATOES | 12. YAM | 16. HAM |

BuyHartwellLake.com LLC

1-855-Buy-Lake



- We know the lake, our experience allows us to evaluate your needs and quickly identify properties that make sense for you.
- We have the largest inventory and selection of properties listed on Lake Hartwell. Over 34 million dollars as of 10/1/2014.
- Every partner in our company is a full time resident on Lake Hartwell
- All partners have more than 15 years experience selling and listing property on Hartwell.
- All homes and lots are listed in both the SC and GA MLS for maximum exposure.
- Our site www.BuyHartwellLake.com is typically listed first on the first page of virtually all google searches for Lake Hartwell homes and lots.
- We have a one million+ email database of the prime Lake Hartwell purchasing demographic for marketing puposes.
- All listings are submitted to 800+ websites including our flagship site BuyHartwellLake.com. Over 100 million prospects visit our network of partnered websites every month! You will be seen!
- Our monthly newsletter features listings, corp news, lake events and is distributed to thousands of lakefront property owners and a database of clients interested in owning lakefront property.
- Need a different perspective? We offer property viewing by boat. This can give you a unique look at a particular home or lot that you're considering.
- Would you like your lake home to produce cash? We market and manage lakefront rentals and off lake properties.

Call us anytime to discuss your situation
1-855-Buy-Lake



Patty and Don Cleveland

- Members of both SC Western Upstate & the GA MLS
- Multi-Million Dollar Producers and Accredited Buyers Representative
- Specialization: We all specialize in property on and around Lake Hartwell, Lake Keowee and other surrounding lakes. We pride ourselves in keeping abreast of the market of both what is new and what has sold. We want to be well informed so as to give you the best service possible. Our motto is "If we don't take care of our customers, someone else will".
- Personal: We have lived on Lake Hartwell for a number of years owning property in both Georgia and South Carolina. We know Hartwell! Whether you are looking to be on the lake or in a lake accessible area, we can help you. Once you narrow your search down, we can show you property by boat. If you are looking to sell, please let us meet with you and show you our marketing plan. Many of our clients are referred to us by previous clients. Let our dream of lake living be yours as well



Delilah Hewitt

- Lifetime member "Million Dollar Club": Agent of the Year
- Licensed in GA & SC
- Specializing in lakefront property on Lake Hartwell and Lake Keowee
- Weather BUYING or Selling, let my expertise work for YOU!
- *****I COVER THE LAKE*****
- My family and I moved here from Roswell GA 19 years ago. Prior to that we enjoyed a weekend home here for approximately 9 years. It's been fun for my husband, Tom, and I to watch our children(along with their friends) grow up on the lake. Weather skiing, boating, fishing, wake boarding or just hanging out together and relaxing, it's a fun way to share quality family time. It's a wonderful lifestyle. Why not beat the hustle and bustle and let me find the perfect lake place for you and your family!!(and you'll make a great investment in your future to).



Kyle Corbett

- Listing Specialist–Aggressive Marketing Plan for Lake Property&Homes.
- Listing Sales Rate 36% GREATER than the lakefront market average
- Full time resident on Lake Hartwell for the last 23 years
- Licensed in SC and GA – Multi Million Dollar Producer
- I bought my first lake cabin in 1992 a few years after graduating from Clemson University. 23 years later I am married with three boys and we spend a great deal of our free time skiing, tubing, knee boarding and kayaking.
- I have a marketing plan which is second to none and gives our sellers an upper hand when it comes to listing their property. As a result, my listing sales rate for homes is 36% GREATER than the market average. Why? Because we do more! My approach is based on years of experience, research and knowledge of buying trends. I do not just put sign in the yard and just walk away, I spend time everyday with every listing making sure it is best positioned to get maximum exposure. Allow me to determine the value of your lakefront property - 864.376.9163.





Debbie Henderson

- Licensed in Georgia and South Carolina
- Member of the Georgia and Western Upstate MLS
- Accredited Buyers Representative
- I grew up water skiing with my family and now enjoy living on Lake Hartwell and being involved in the Toccoa, GA community as a CASA volunteer and mentor. The lake has proven to be a great place to relax and refresh, to play and enjoy nature and to entertain and connect with family and friends. I've been involved in building custom homes for 20 years, including the last 8 on the lake. That, combined with other sales and marketing experience, makes me uniquely qualified to help you sell your current home or help you find your own private retreat on the lake.



I look forward to working with you to make your lake living dreams come true! Call me anytime at 404-313-4404.

Judy Stevanovich

- I was born and raised in Anderson SC. After a 32 year career in Corporate America and many relocations, I came home to Anderson seven years ago.
- My marketing, sales, finance, human resources and administration background in Corporate America has been immediately put to work in Real Estate.
- My husband Steve and I live in Stone Creek Cove in Anderson on the shores of gorgeous Lake Hartwell. Steve is an artist and when he is not in the studio there is only one place to look—the golf course. We both love being in Anderson.
- My sub-company is the Upstate A Team and my slogan is “Real Estate With a Difference” Call me today and you will be able to experience first hand the processes I have put in place to quickly find you the perfect property or determine the market value to sell the property you have today. For more information, see my website www.upstateteam.com. Telephone: 864-276-7416; E-mail; jstevano@charter.net.

