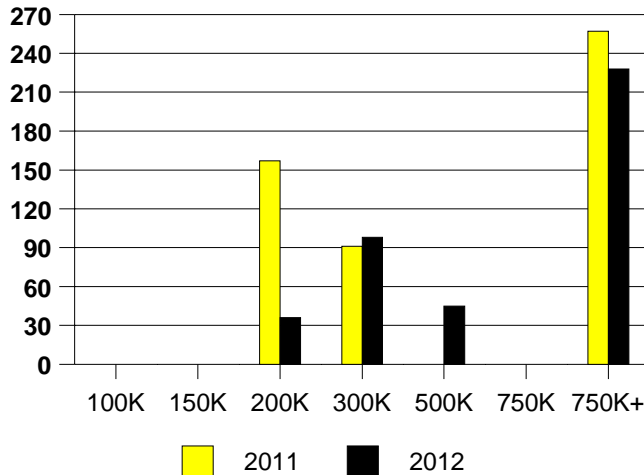
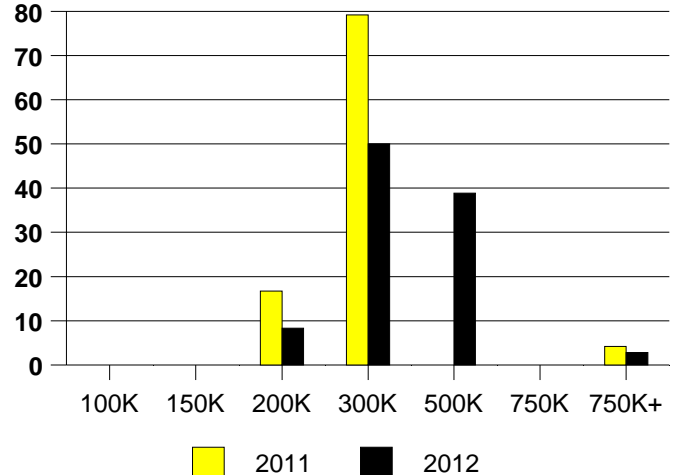


	<u>2011</u>	<u>2012</u>
Total Sold Volume	\$ 7,699,500	\$ 10,894,221
Number of Sales	24	36
Median Sale Price	\$ 244,400	\$ 282,710

DAYS ON THE MARKET (ADDISON)



ADDISON MKT SHARE BY PRICE RANGE



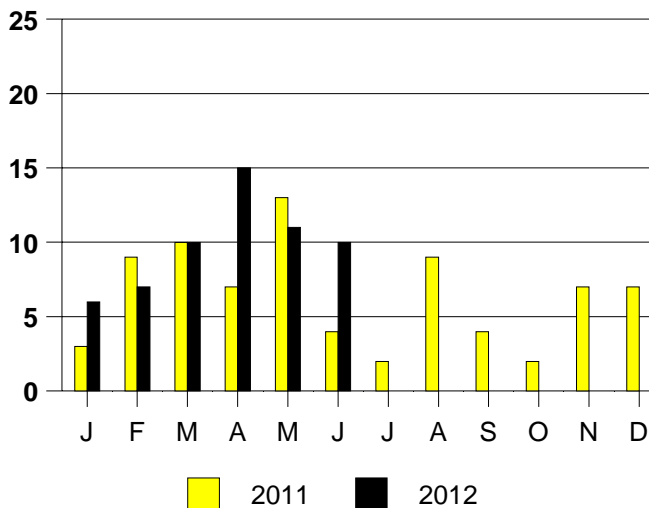
SALE/LIST PRICE RATIO

0K-100K	NONE
101K-150K	NONE
151K-200K	92.3%
201K-300K	96.3%
301K-500K	98.4%
501K-750K	NONE
751K+	98.5%

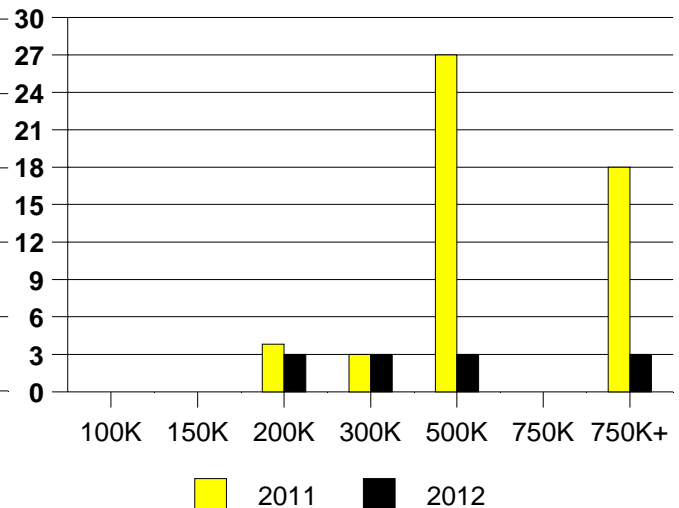
AVERAGE OVERPRICING
Original List Price to Sale Price

2011	7.0%
2012	4.5%

ADDISON MONTHLY SALES

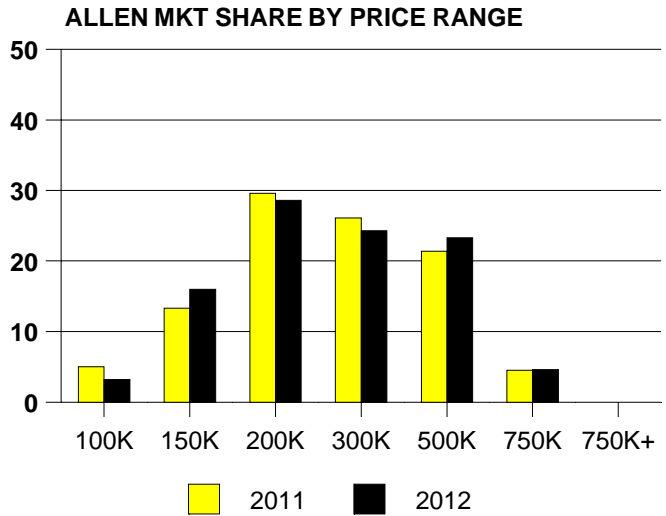
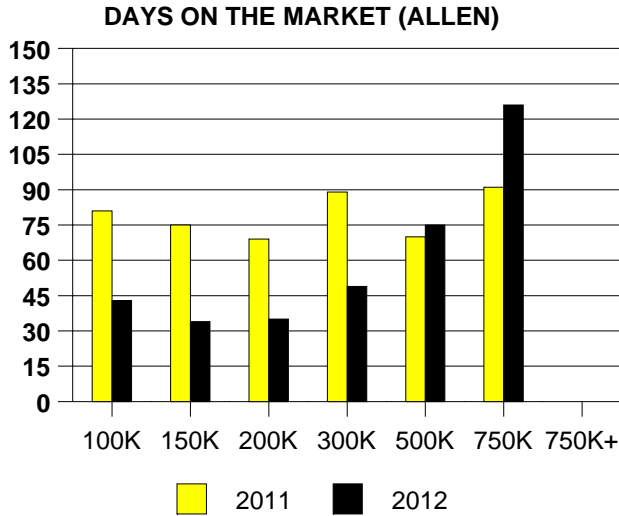


Inventory not shown where no sales
ADDISON MONTHS OF INVENTORY



NTREIS Sold informaton as of 07/03/2012

	<u>2011</u>	<u>2012</u>
Total Sold Volume	\$96,514,739	\$ 101,954,420
Number of Sales	398	412
Median Sale Price	\$ 208,395	\$ 205,000



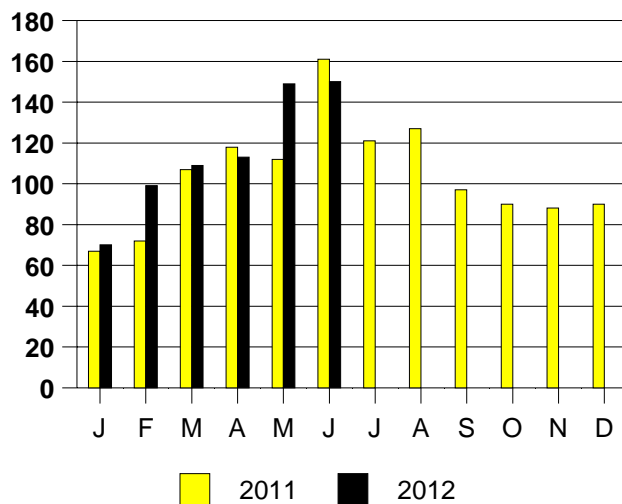
SALE/LIST PRICE RATIO

0K-100K	97.9%
101K-150K	97.8%
151K-200K	98.4%
201K-300K	97.6%
301K-500K	96.7%
501K-750K	96.8%
751K+	NONE

AVERAGE OVERPRICING
Original List Price to Sale Price

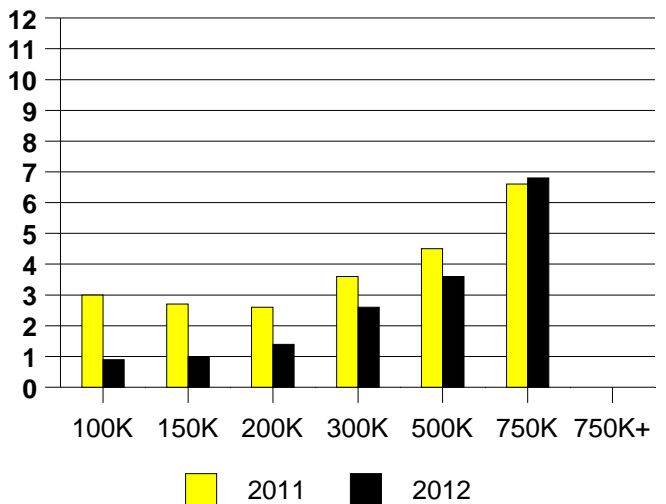
2011	6.1%
2012	4.0%

ALLEN MONTHLY SALES



Inventory not shown where no sales

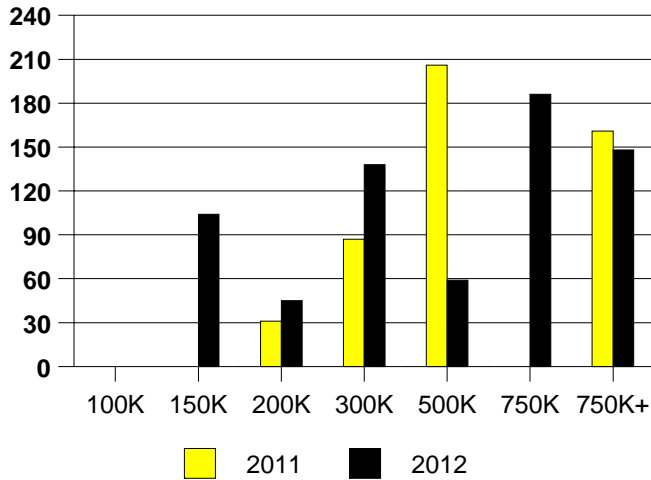
ALLEN MONTHS OF INVENTORY



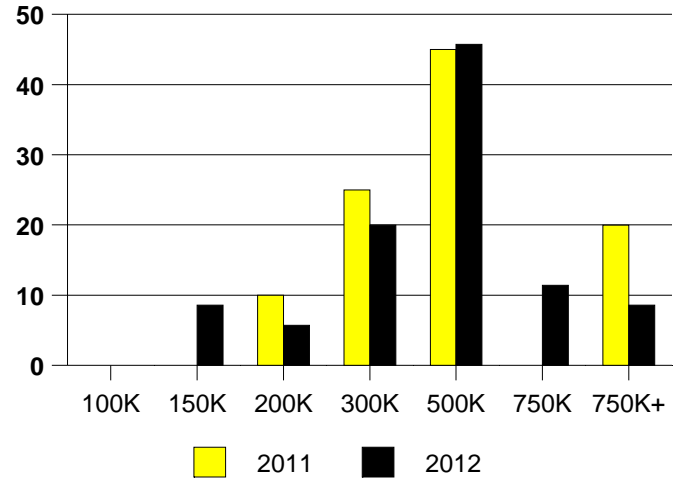
NTREIS Sold informaton as of 07/03/2012

	<u>2011</u>	<u>2012</u>
Total Sold Volume	\$ 8,768,769	\$ 14,273,340
Number of Sales	20	35
Median Sale Price	\$ 326,250	\$ 375,000

DAYS ON THE MARKET (ARGYLE)



ARGYLE MKT SHARE BY PRICE RANGE



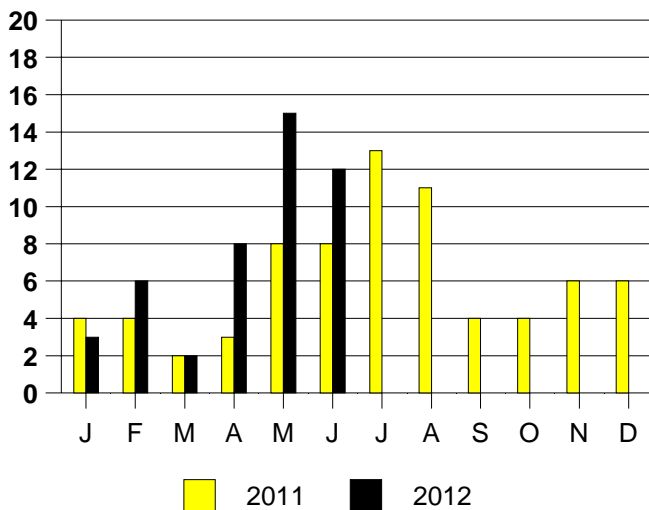
SALE/LIST PRICE RATIO

0K-100K	NONE
101K-150K	97.0%
151K-200K	97.3%
201K-300K	97.6%
301K-500K	96.3%
501K-750K	96.6%
751K+	96.8%

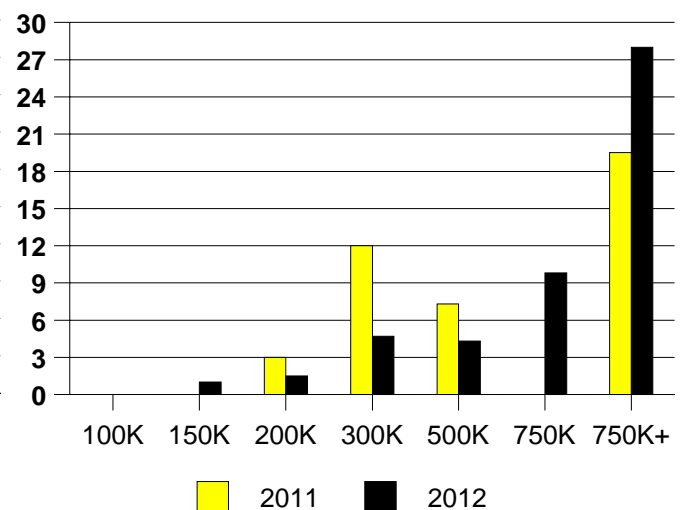
AVERAGE OVERPRICING
Original List Price to Sale Price

2011	8.6%
2012	6.6%

ARGYLE MONTHLY SALES



Inventory not shown where no sales
ARGYLE MONTHS OF INVENTORY

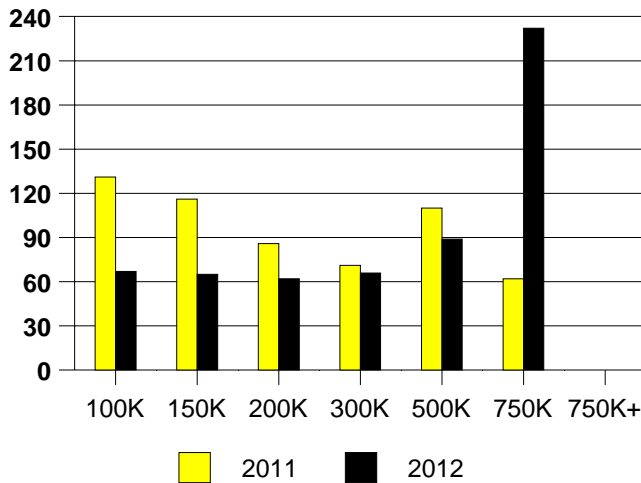


NTREIS Sold informaton as of 07/03/2012

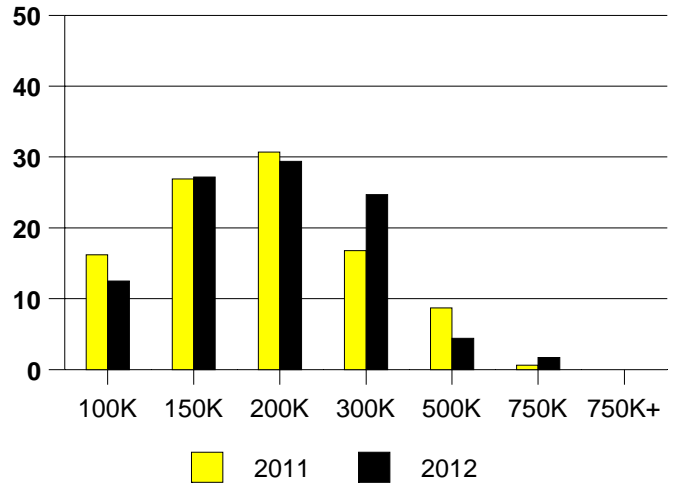
CHICAGO TITLE

	<u>2011</u>	<u>2012</u>
Total Sold Volume	\$ 54,812,461	\$ 65,377,660
Number of Sales	309	360
Median Sale Price	\$ 161,500	\$ 165,950

DAYS ON MARKET(CARROLLTON)



CARROLLTON MKT SHARE BY PRICE RANGE



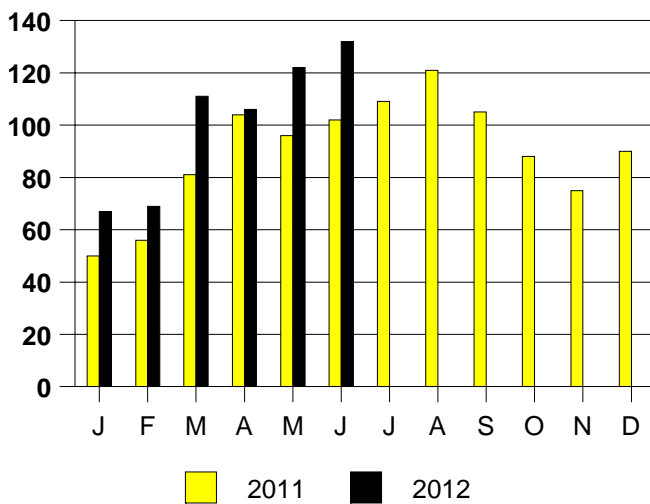
SALE/LIST PRICE RATIO

0K-100K	99.0%
101K-150K	97.9%
151K-200K	97.6%
201K-300K	97.2%
301K-500K	98.1%
501K-750K	92.6%
751K+	NONE

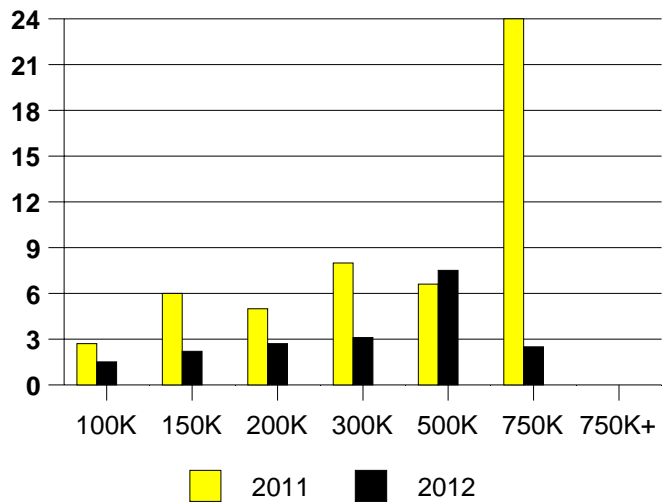
AVERAGE OVERPRICING
Original List Price to Sale Price

2011	8.5%
2012	5.0%

CARROLLTON MONTHLY SALES



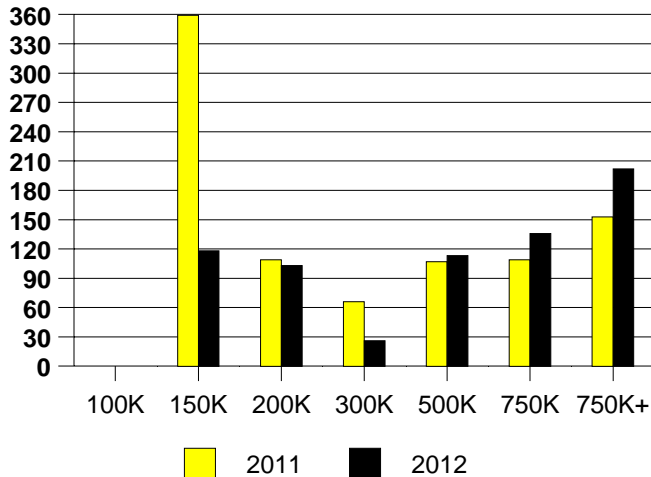
CARROLLTON MONTHS OF INVENTORY



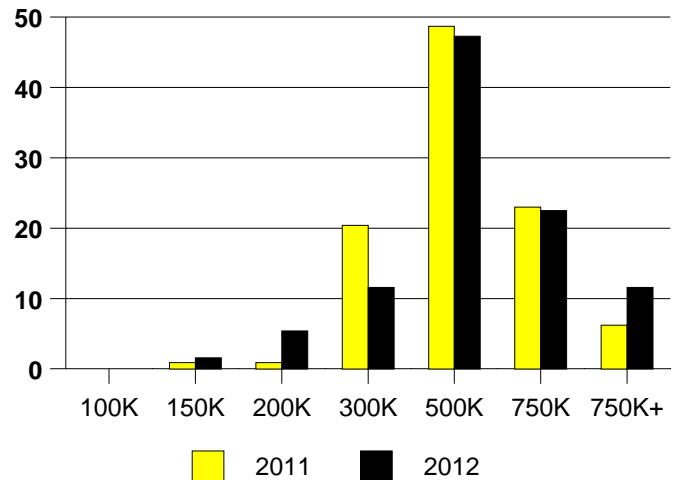
NTREIS Sold informaton as of 07/03/2012

	<u>2011</u>	<u>2012</u>
Total Sold Volume	\$ 51,780,027	\$ 64,088,998
Number of Sales	113	129
Median Sale Price	\$ 405,000	\$ 440,000

DAYS ON THE MARKET (COLLEYVILLE)



COLLEYVILLE MKT SHARE BY PRICE RANGE



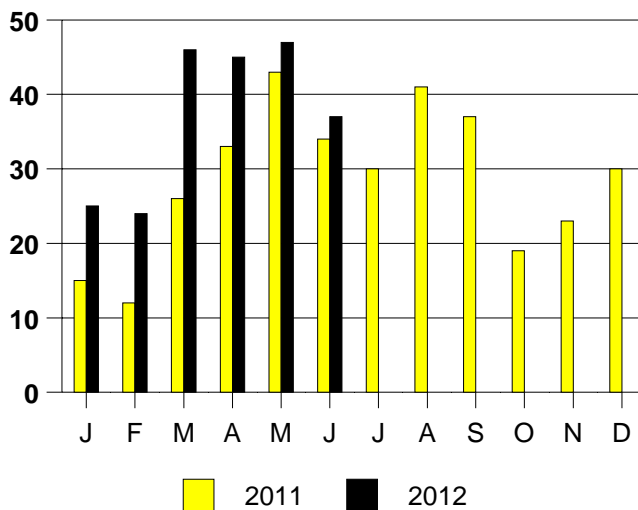
SALE/LIST PRICE RATIO

0K-100K	NONE
101K-150K	94.8%
151K-200K	93.3%
201K-300K	96.9%
301K-500K	97.2%
501K-750K	97.1%
751K+	96.4%

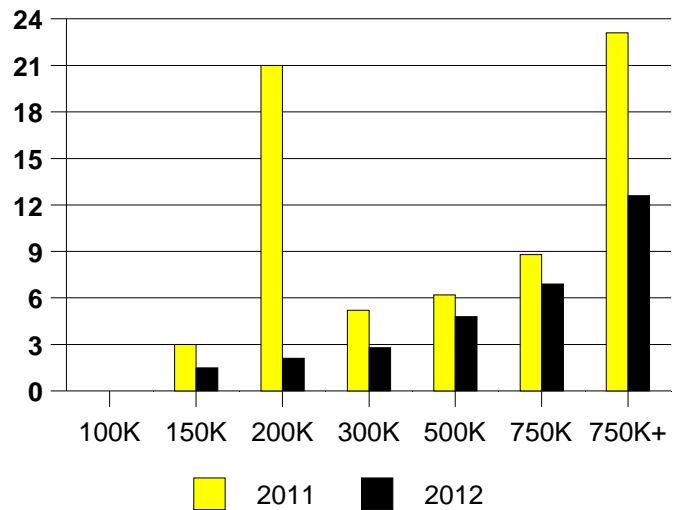
AVERAGE OVERPRICING
Original List Price to Sale Price

2011	8.4%
2012	6.5%

COLLEYVILLE MONTHLY SALES



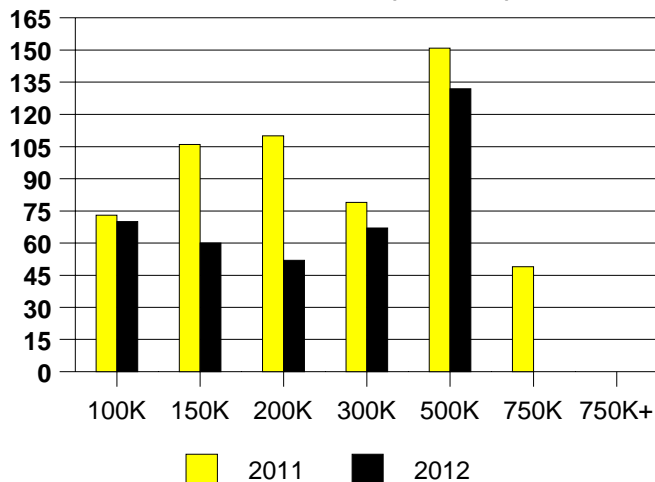
COLLEYVILLE MONTHS OF INVENTORY



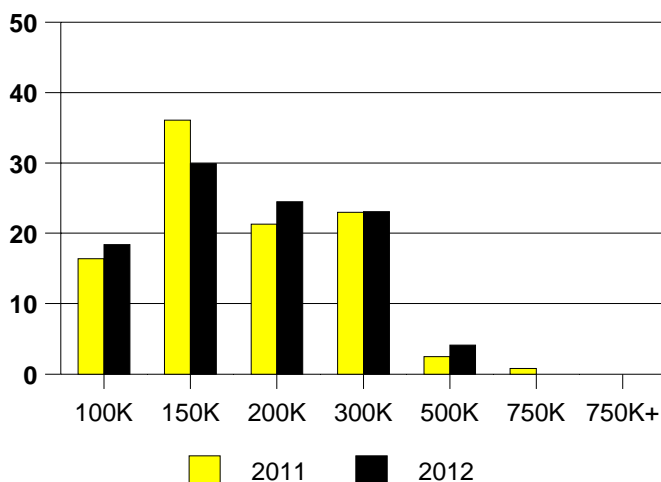
NTREIS Sold informaton as of 07/03/2012

	<u>2011</u>	<u>2012</u>
Total Sold Volume	\$ 19,557,230	\$ 23,548,231
Number of Sales	122	147
Median Sale Price	\$ 145,705	\$ 158,900

DAYS ON THE MARKET (COLONY)



COLONY MKT SHARE BY PRICE RANGE



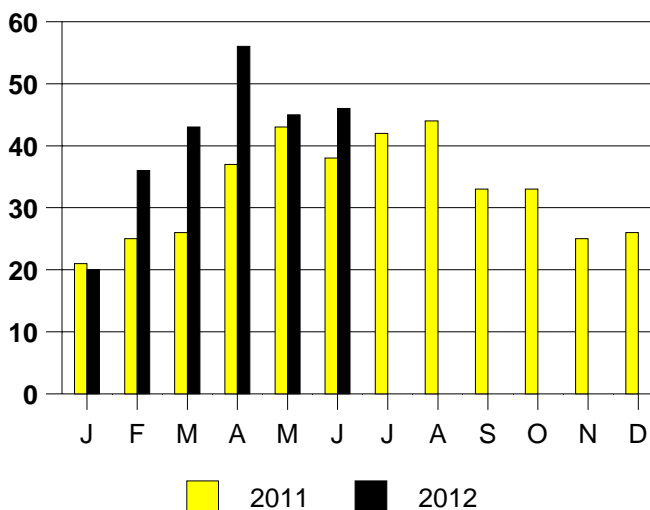
SALE/LIST PRICE RATIO

0K-100K	92.4%
101K-150K	97.2%
151K-200K	97.1%
201K-300K	97.7%
301K-500K	93.3%
501K-750K	NONE
751K+	NONE

AVERAGE OVERPRICING

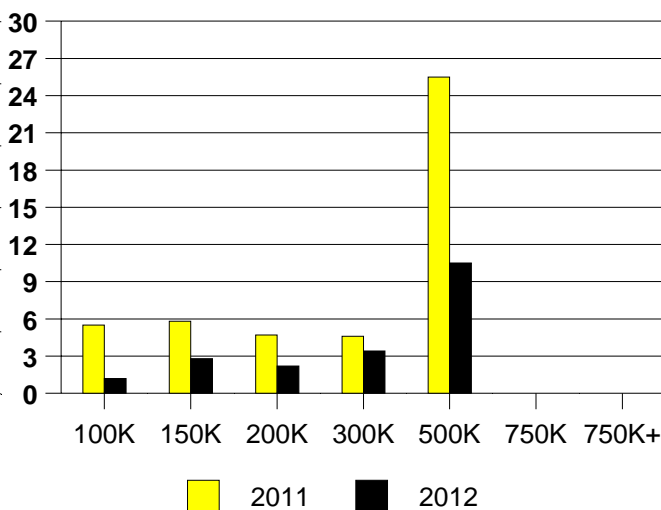
Original List Price to Sale Price	
2011	5.8%
2012	7.1%

THE COLONY MONTHLY SALES



Inventory not shown where no sales

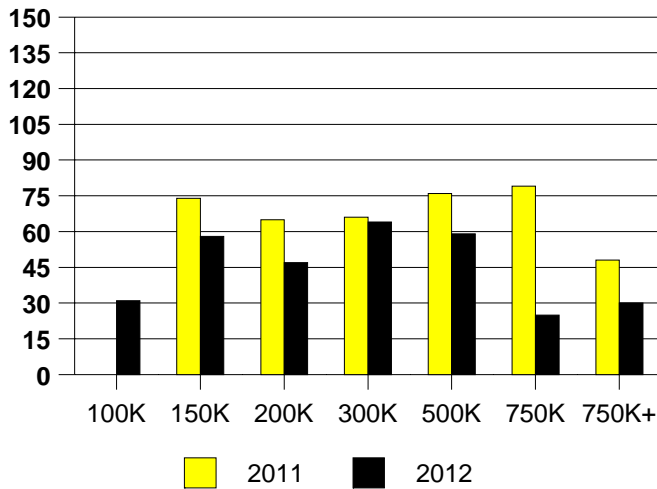
THE COLONY MONTHS OF INVENTORY



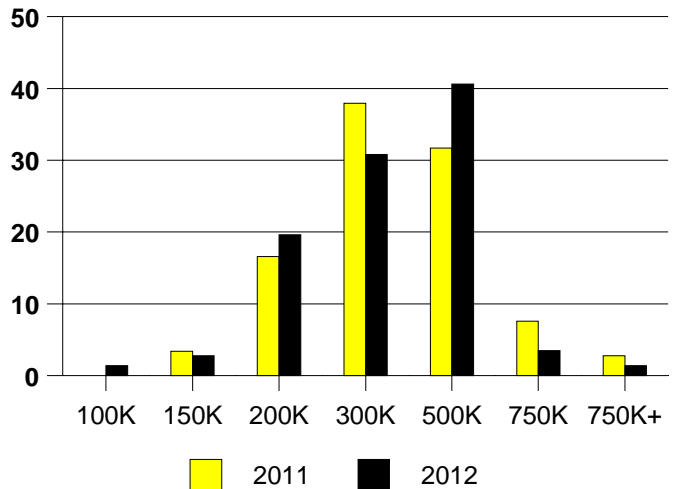
NTREIS Sold informaton as of 07/03/2012

	<u>2011</u>	<u>2012</u>
Total Sold Volume	\$ 47,246,262	\$ 44,024,513
Number of Sales	145	143
Median Sale Price	\$ 285,000	\$ 289,900

DAYS ON THE MARKET (COPPELL)



COPPELL MKT SHARE BY PRICE RANGE



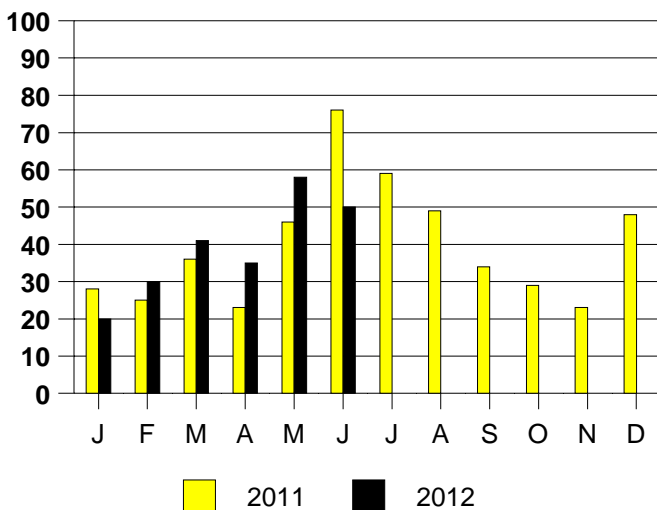
SALE/LIST PRICE RATIO

0K-100K	94.8%
101K-150K	96.3%
151K-200K	97.9%
201K-300K	97.8%
301K-500K	97.6%
501K-750K	98.0%
751K+	95.7%

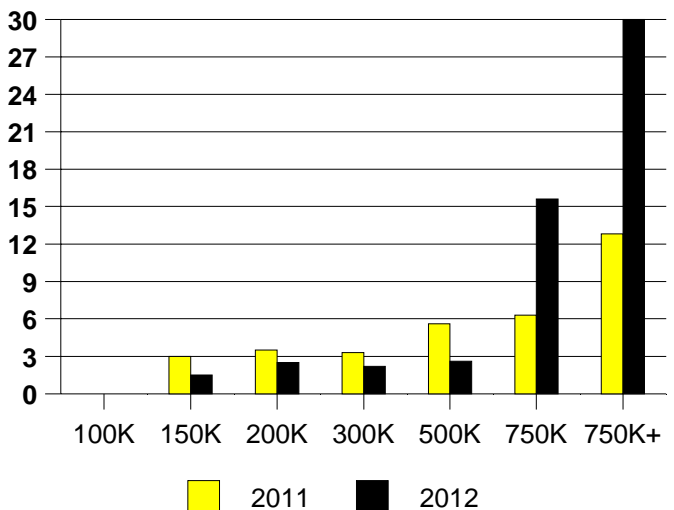
AVERAGE OVERPRICING
Original List Price to Sale Price

2011	4.9%
2012	4.5%

COPPELL MONTHLY SALES



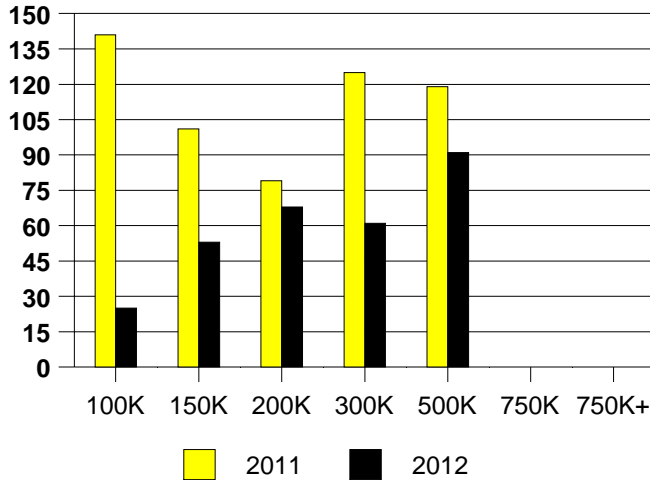
Inventory not shown where no sales
COPPELL MONTHS OF INVENTORY



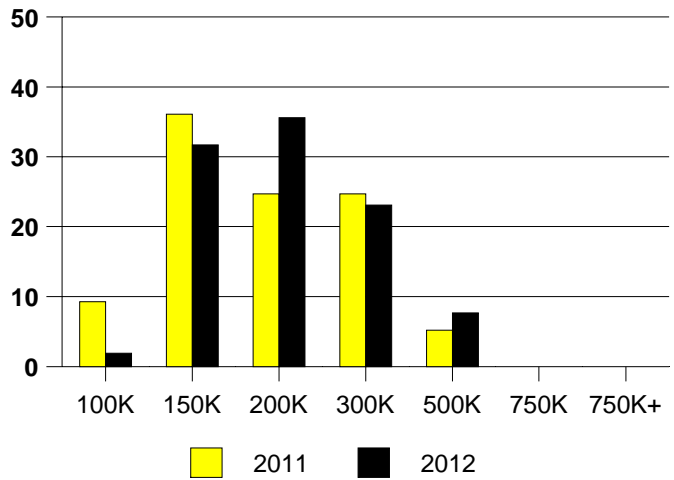
NTREIS Sold informaton as of 07/03/2012

	<u>2011</u>	<u>2012</u>
Total Sold Volume	\$ 16,887,468	\$ 19,464,551
Number of Sales	97	104
Median Sale Price	\$ 157,500	\$ 175,325

DAYS ON THE MARKET (CORINTH)



CORINTH MKT SHARE BY PRICE RANGE



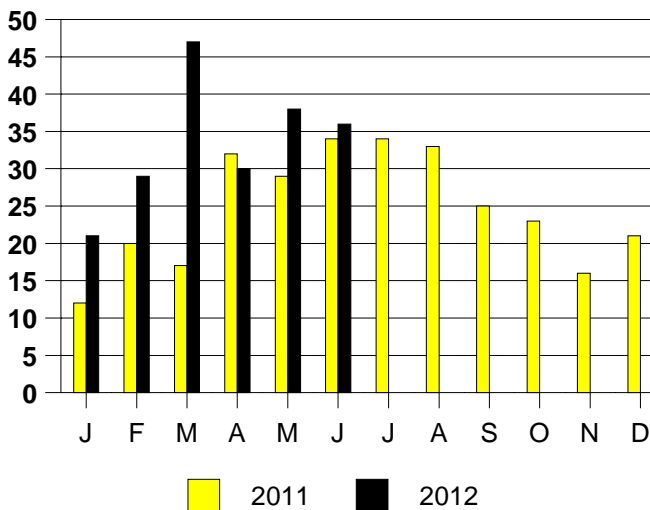
SALE/LIST PRICE RATIO

0K-100K	101.2%
101K-150K	98.2%
151K-200K	98.0%
201K-300K	98.9%
301K-500K	96.4%
501K-750K	NONE
751K+	NONE

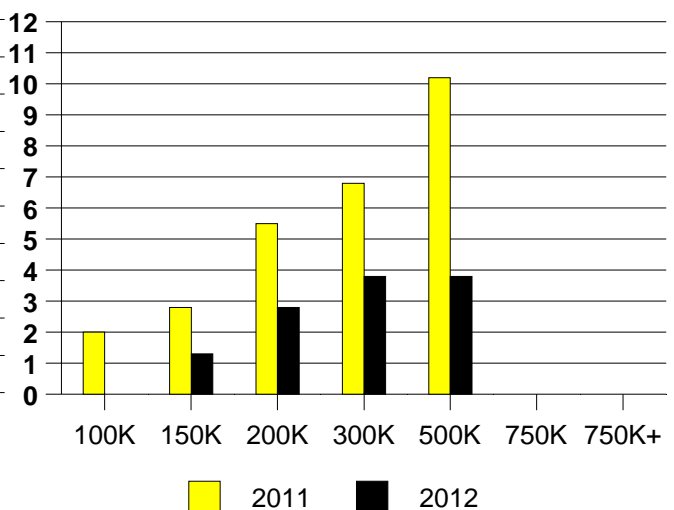
AVERAGE OVERPRICING
Original List Price to Sale Price

2011	8.5%
2012	4.2%

CORINTH MONTHLY SALES



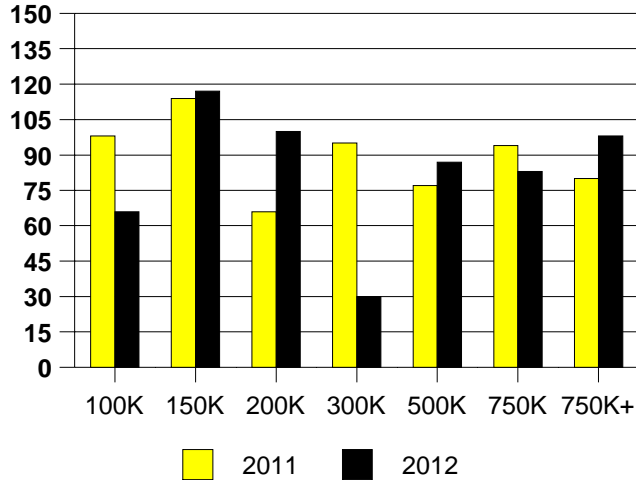
Inventory not shown where no sales
CORINTH MONTHS OF INVENTORY



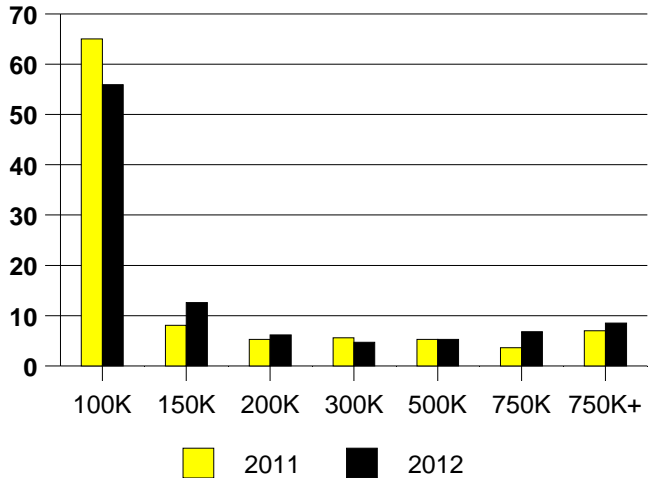
NTREIS Sold informaton as of 07/03/2012

	<u>2011</u>	<u>2012</u>
Total Sold Volume	\$ 67,452,539	\$ 89,859,124
Number of Sales	357	340
Median Sale Price	\$ 65,900	\$ 88,000

DAYS ON THE MARKET (DALLAS)



DALLAS MKT SHARE BY PRICE RANGE



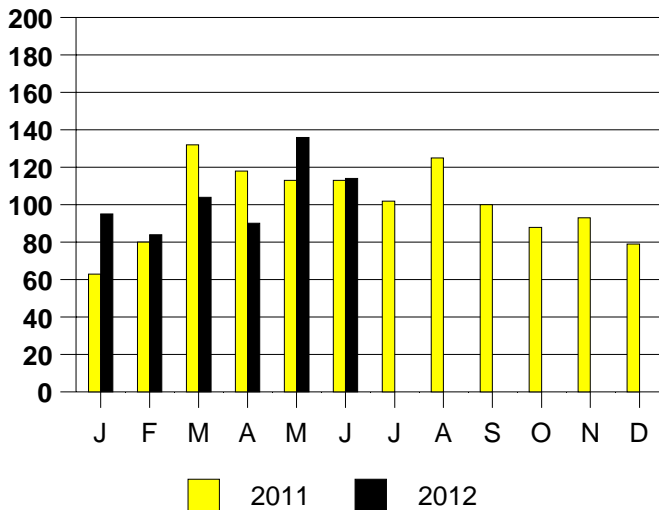
SALE/LIST PRICE RATIO

0K-100K	101.8%
101K-150K	95.5%
151K-200K	96.9%
201K-300K	97.7%
301K-500K	95.6%
501K-750K	96.7%
751K+	97.0%

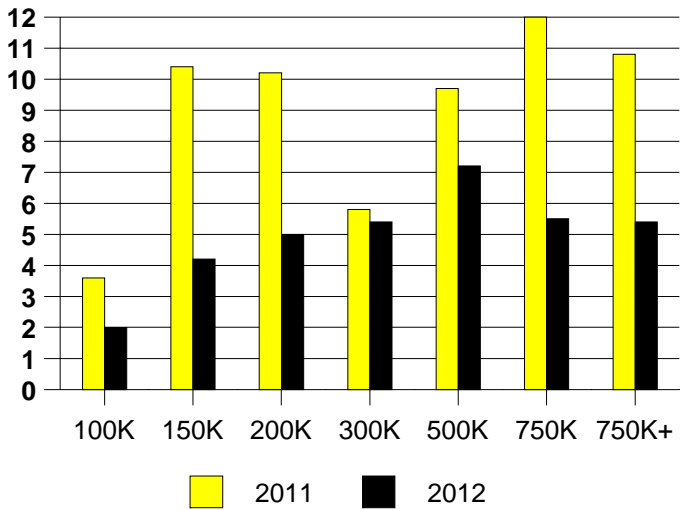
AVERAGE OVERPRICING
Original List Price to Sale Price

2011	14.4%
2012	9.2%

DALLAS MONTHLY SALES



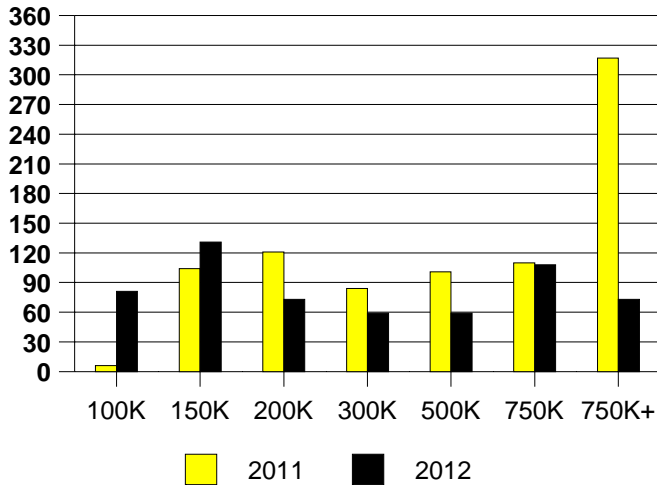
Inventory not shown where no sales
DALLAS MONTHS OF INVENTORY



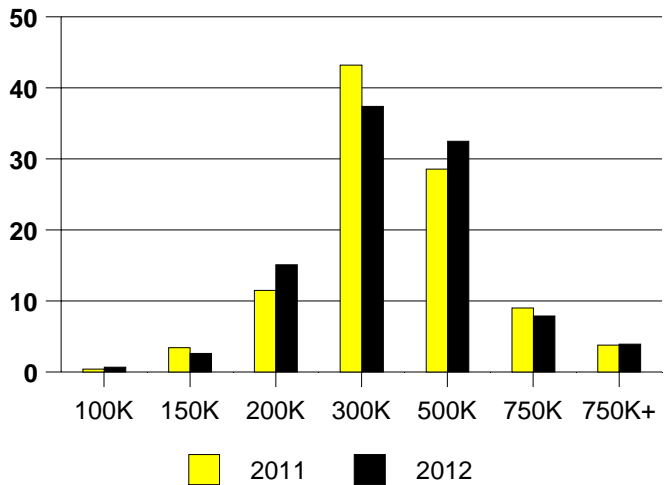
NTREIS Sold informaton as of 07/03/2012

	2011	2012
Total Sold Volume	\$ 78,675,417	\$ 101,004,246
Number of Sales	234	305
Median Sale Price	\$ 280,000	\$ 281,000

DAYS ON THE MARKET (AREA 10)



AREA 10 MKT SHARE BY PRICE RANGE



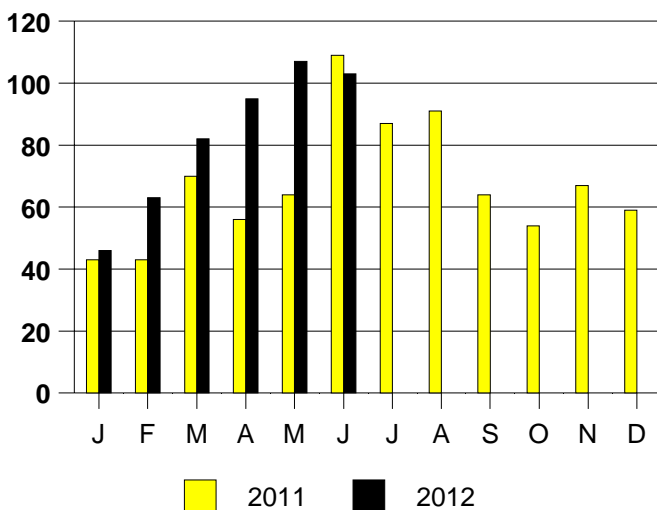
SALE/LIST PRICE RATIO

0K-100K	91.5%
101K-150K	99.5%
151K-200K	96.8%
201K-300K	97.4%
301K-500K	96.8%
501K-750K	97.1%
751K+	94.2%

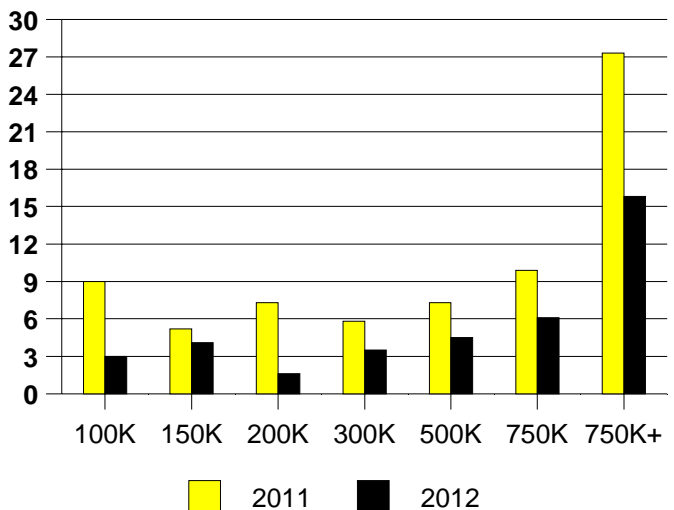
AVERAGE OVERPRICING
Original List Price to Sale Price

2011	8.9%
2012	5.9%

AREA 10 MONTHLY SALES



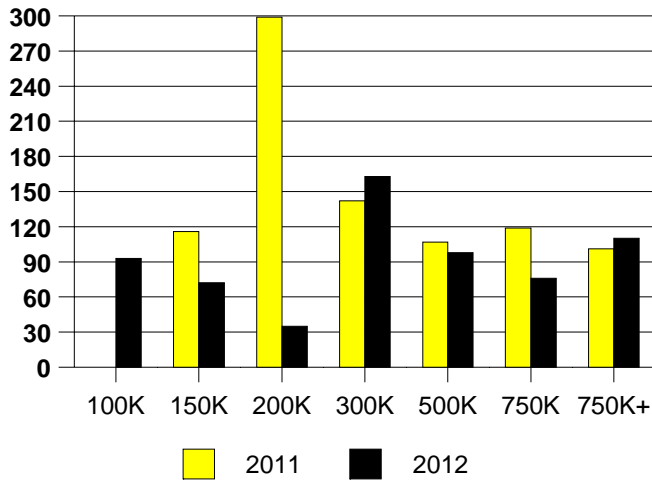
Inventory not shown where no sales
AREA 10 MONTHS OF INVENTORY



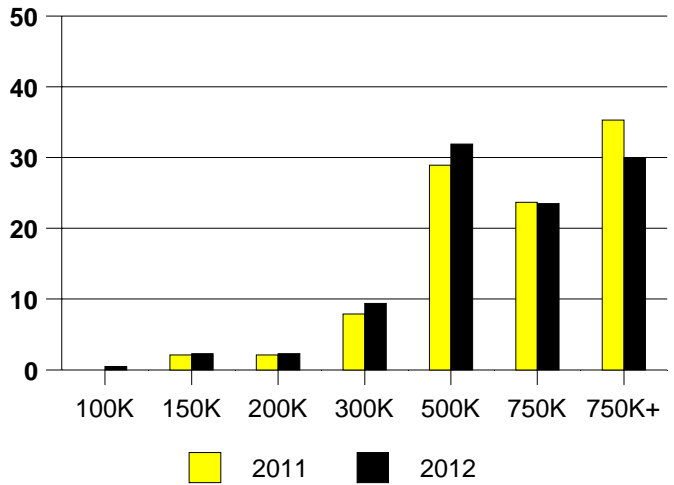
NTREIS Sold informaton as of 07/03/2012

	2011	2012
Total Sold Volume	\$ 153,954,927	\$ 151,324,369
Number of Sales	190	213
Median Sale Price	\$ 572,500	\$ 532,000

DAYS ON THE MARKET (DALLAS NORTH)



DALLAS N MKT SHARE BY PRICE RANGE



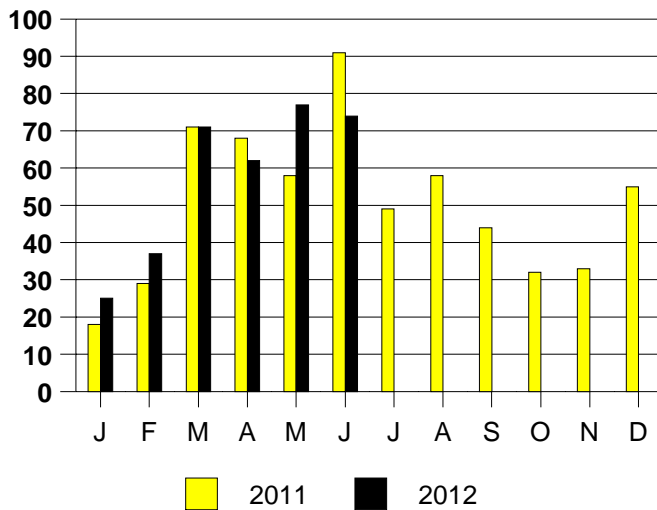
SALE/LIST PRICE RATIO

0K-100K	94.4%
101K-150K	94.2%
151K-200K	97.9%
201K-300K	93.6%
301K-500K	95.7%
501K-750K	97.0%
751K+	96.2%

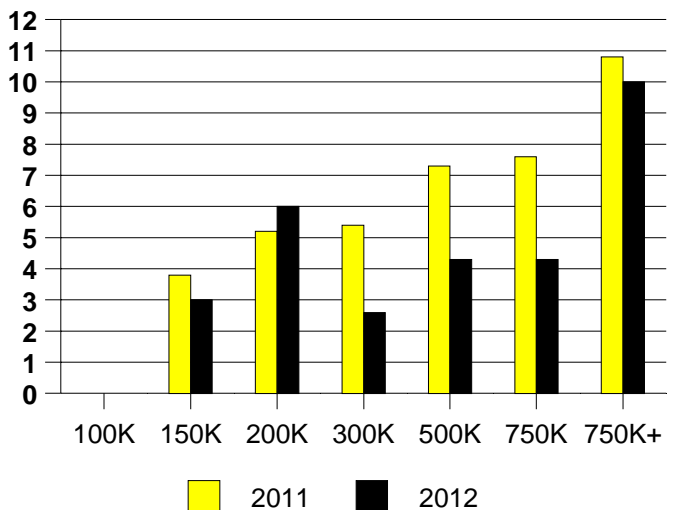
AVERAGE OVERPRICING
Original List Price to Sale Price

2011	12.2%
2012	8.6%

DALLAS NORTH MONTHLY SALES



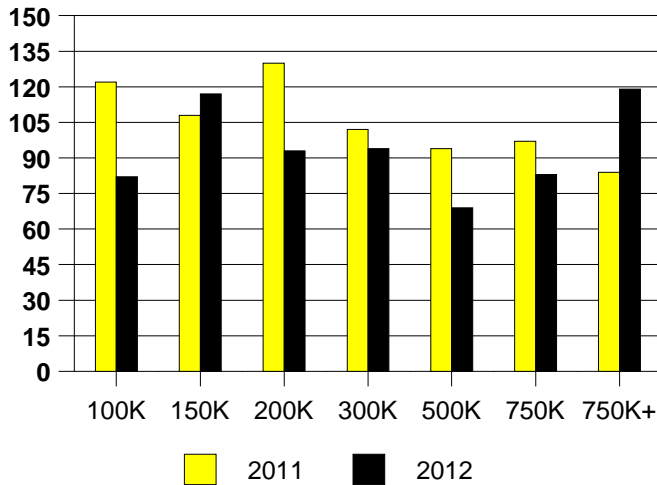
Inventory not shown where no sales
DALLAS NORTH MONTHS OF INVENTORY



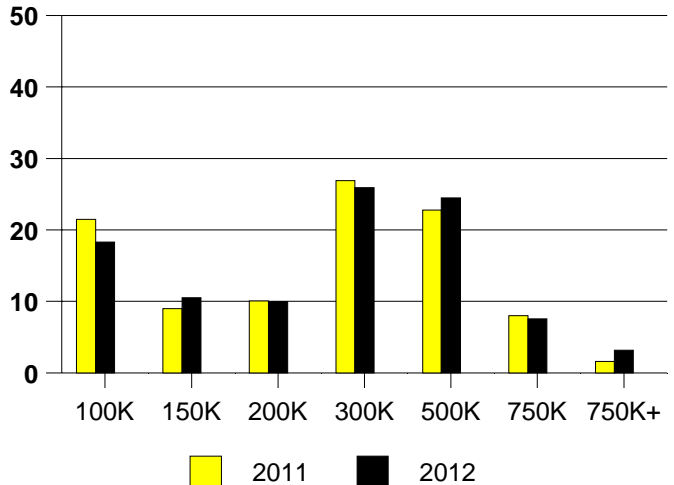
NTREIS Sold informaton as of 07/03/2012

	2011	2012
Total Sold Volume	\$ 143,962,113	\$ 174,503,364
Number of Sales	553	629
Median Sale Price	\$ 235,000	\$ 245,000

DAYS ON THE MARKET (DALLAS EAST)



DALLAS EAST MKT SHARE BY PRICE RANGE



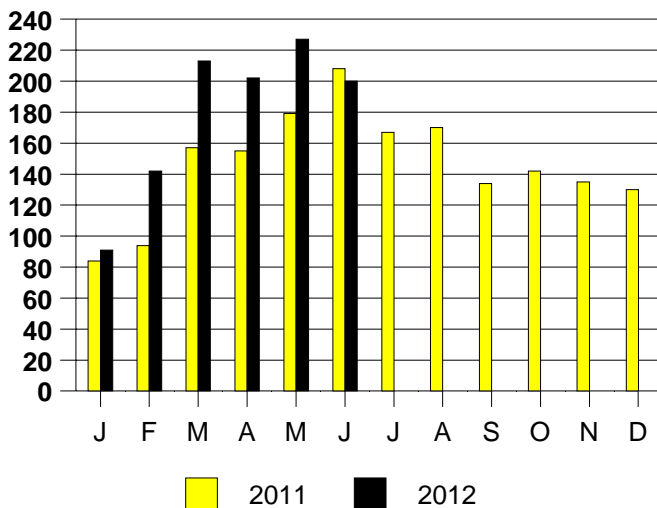
SALE/LIST PRICE RATIO

0K-100K	98.0%
101K-150K	96.6%
151K-200K	97.2%
201K-300K	97.2%
301K-500K	97.1%
501K-750K	97.0%
751K+	97.4%

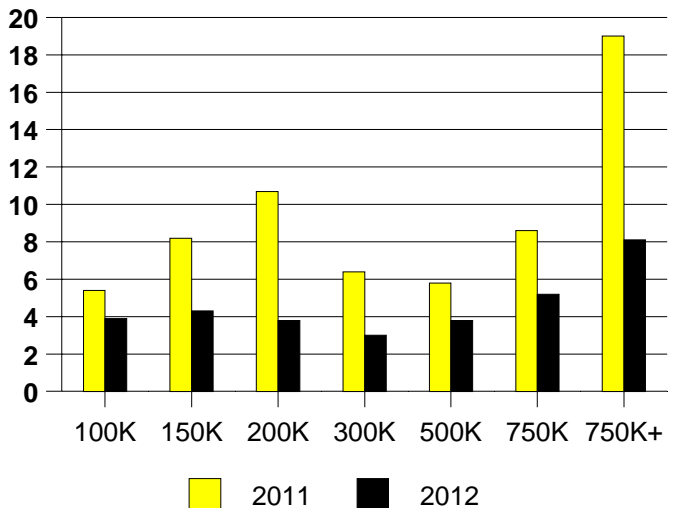
AVERAGE OVERPRICING
Original List Price to Sale Price

2011	12.2%
2012	7.6%

DALLAS EAST MONTHLY SALES



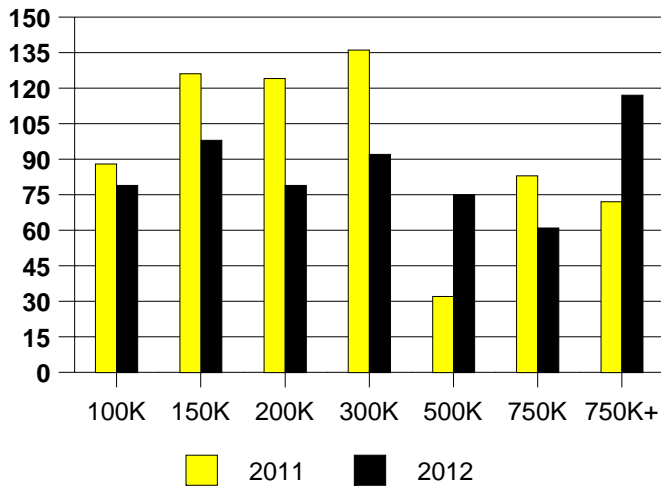
Inventory not shown where no sales
DALLAS EAST MONTHS OF INVENTORY



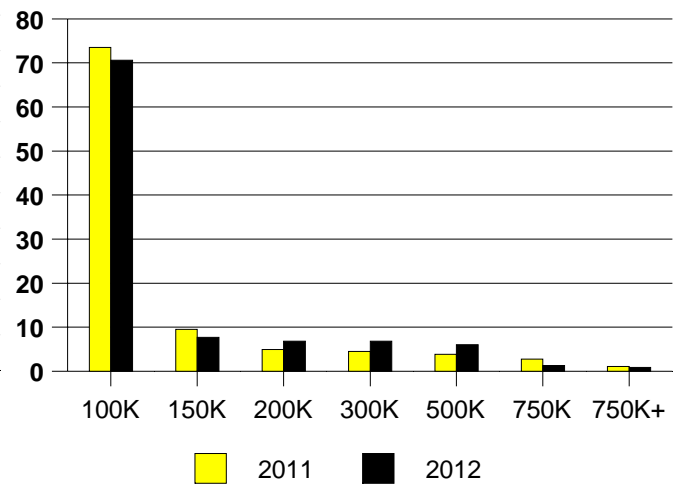
NTREIS Sold informaton as of 07/03/2012

	<u>2011</u>	<u>2012</u>
Total Sold Volume	\$ 29,500,166	\$ 27,063,334
Number of Sales	264	235
Median Sale Price	\$ 66,000	\$ 68,900

DAYS ON THE MARKET (AREA 14)



AREA 14 MKT SHARE BY PRICE RANGE



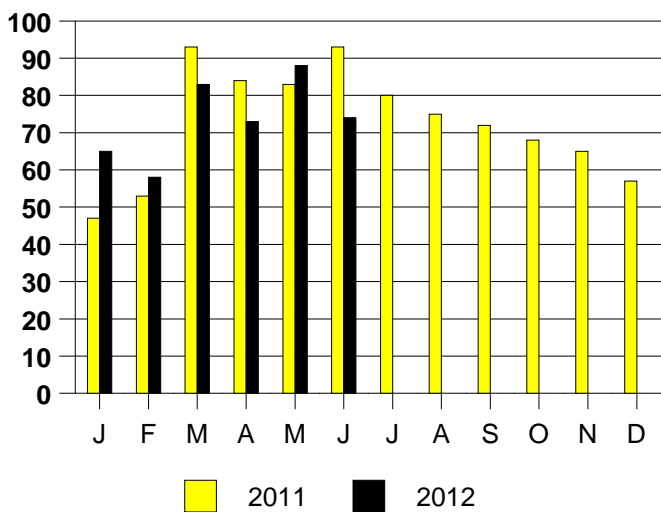
SALE/LIST PRICE RATIO

0K-100K	95.9%
101K-150K	98.1%
151K-200K	97.1%
201K-300K	96.6%
301K-500K	95.3%
501K-750K	95.7%
751K+	NONE

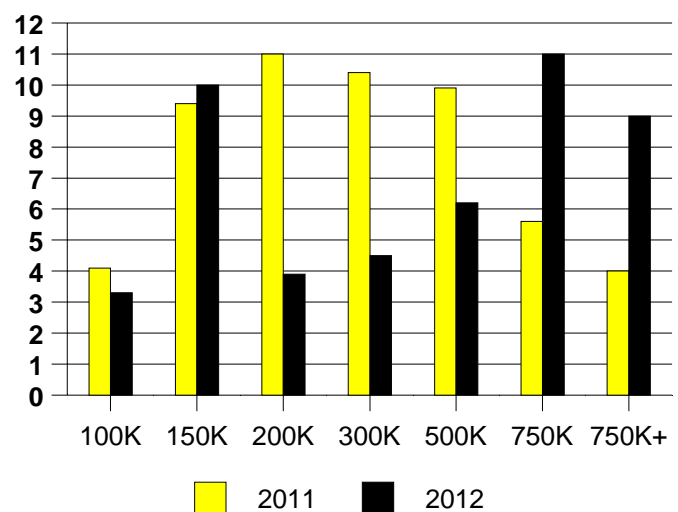
AVERAGE OVERPRICING
Original List Price to Sale Price

2011	16.4%
2012	16.3%

AREA 14 MONTHLY SALES

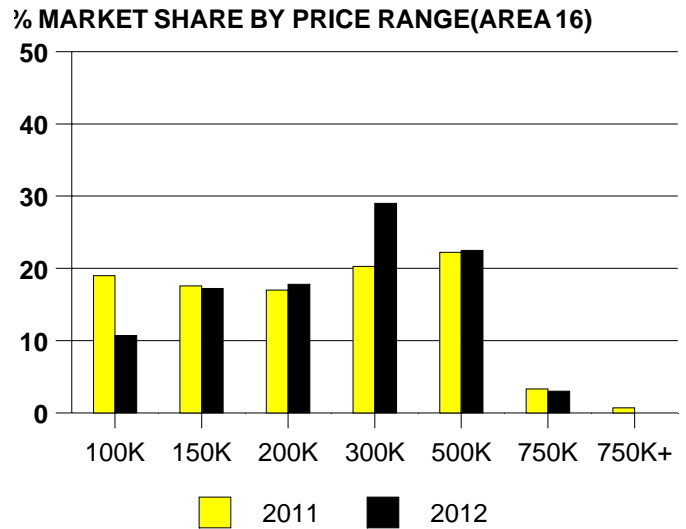
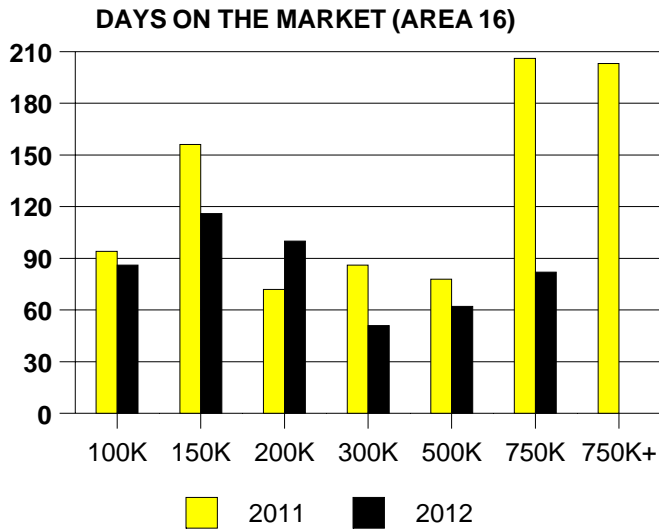


Inventory not shown where no sales
AREA 14 MONTHS OF INVENTORY



NTREIS Sold informaton as of 07/03/2012

	2011	2012
Total Sold Volume	\$ 33,820,448	\$ 39,280,058
Number of Sales	153	169
Median Sale Price	\$ 190,000	\$ 218,000



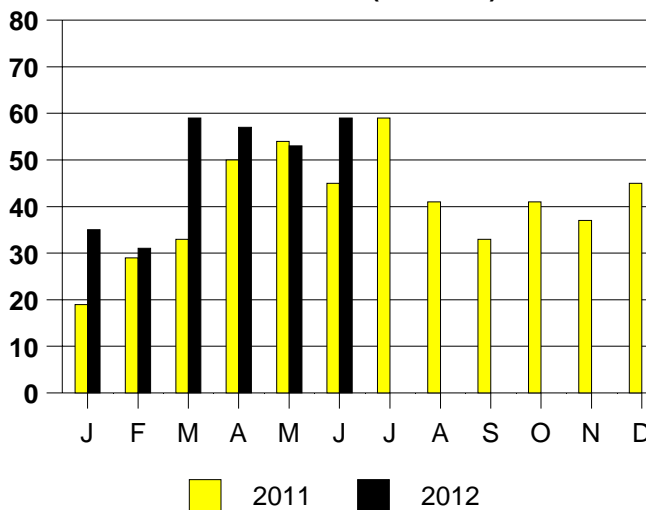
SALE/LIST PRICE RATIO

0K-100K	95.3%
101K-150K	94.6%
151K-200K	94.6%
201K-300K	96.2%
301K-500K	97.3%
501K-750K	96.1%
751K+	NONE

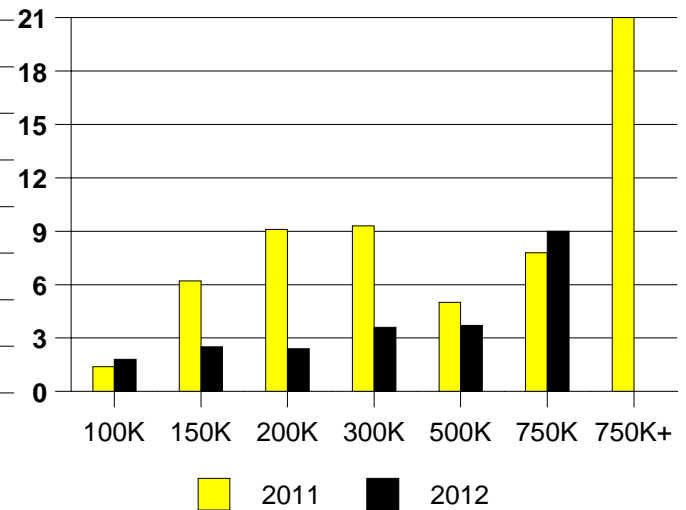
AVERAGE OVERPRICING
Original List Price to Sale Price

2011	11.2%
2012	9.7%

MONTHLY SALES (AREA 16)



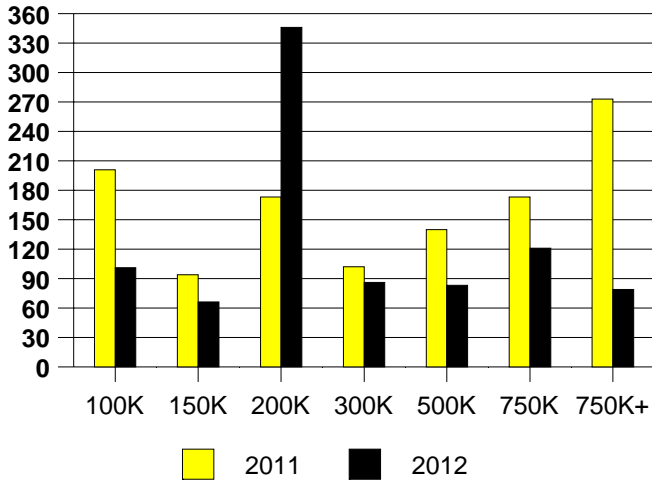
Inventory not shown where no sales
MONTHS OF INVENTORY(AREA 16)



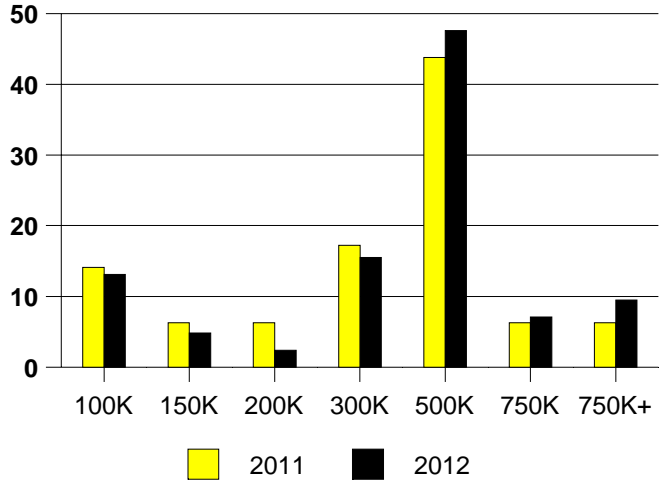
NTREIS Sold informaton as of 07/03/2012

	2011	2012
Total Sold Volume	\$ 21,870,651	\$ 33,743,169
Number of Sales	64	84
Median Sale Price	\$ 318,200	\$ 361,100

DAYS ON THE MARKET (DALLAS OAK LAWN)



DALLAS NE MKT SHARE BY PRICE RANGE



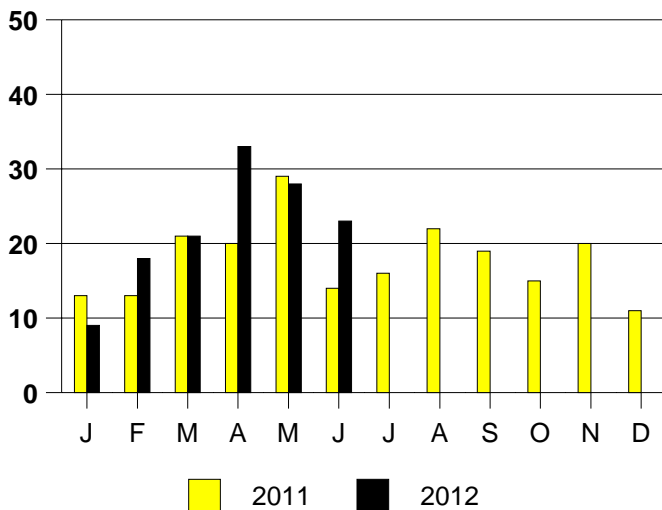
SALE/LIST PRICE RATIO

0K-100K	94.2%
101K-150K	95.9%
151K-200K	97.2%
201K-300K	95.6%
301K-500K	97.2%
501K-750K	96.9%
751K+	94.8%

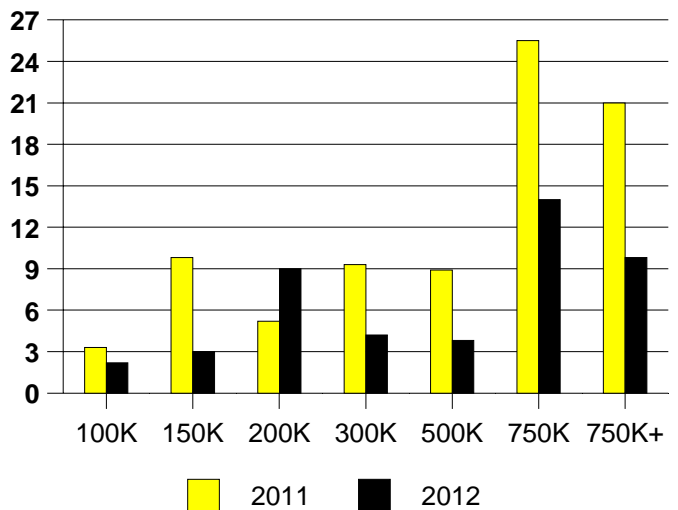
AVERAGE OVERPRICING
Original List Price to Sale Price

2011	13.8%
2012	7.9%

DALLAS OAKLAWN MONTHLY SALES



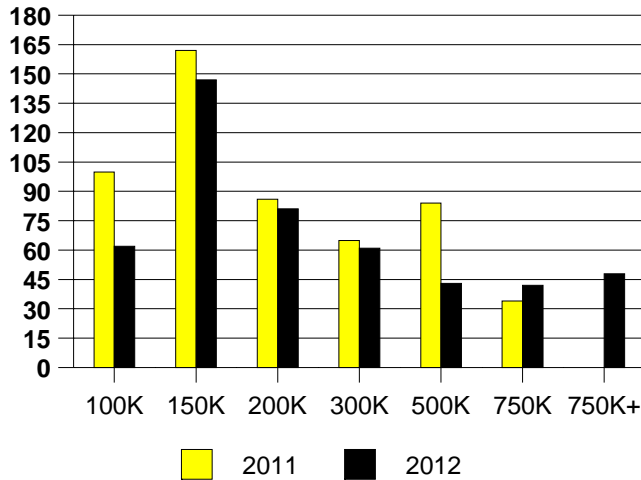
DALLAS OAKLAWN MONTHS OF INVENTORY



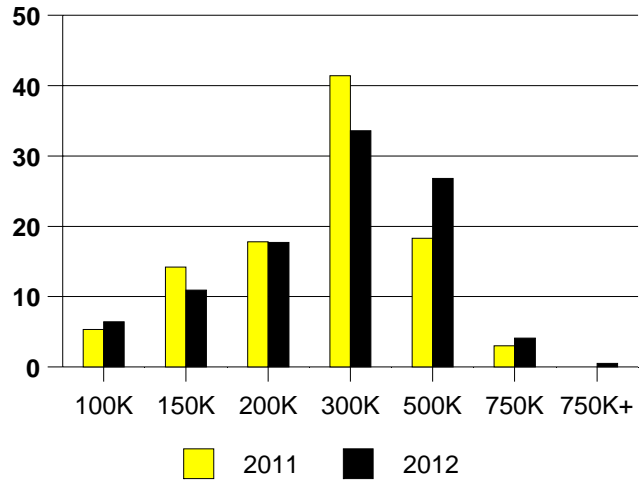
NTREIS Sold informaton as of 07/03/2012

	2011	2012
Total Sold Volume	\$ 41,281,364	\$ 56,682,394
Number of Sales	169	220
Median Sale Price	\$ 225,000	\$ 250,000

DAYS ON THE MARKET (AREA 18)



MKT SHARE BY PRICE RANGE(AREA 18)



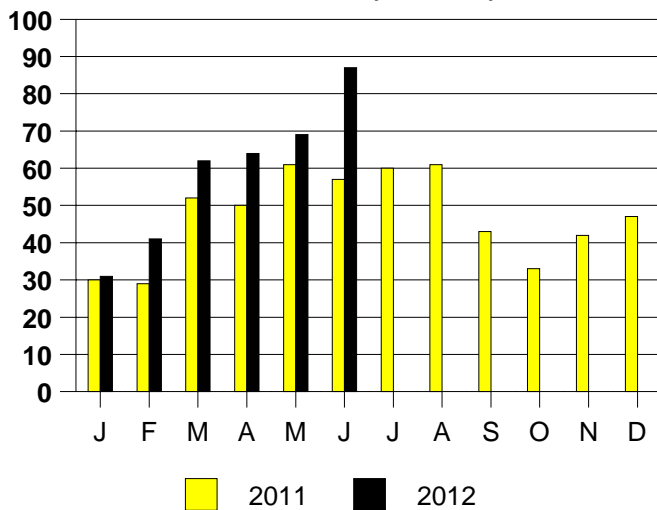
SALE/LIST PRICE RATIO

0K-100K	94.4%
101K-150K	96.3%
151K-200K	96.8%
201K-300K	97.3%
301K-500K	98.1%
501K-750K	97.4%
751K+	100.0%

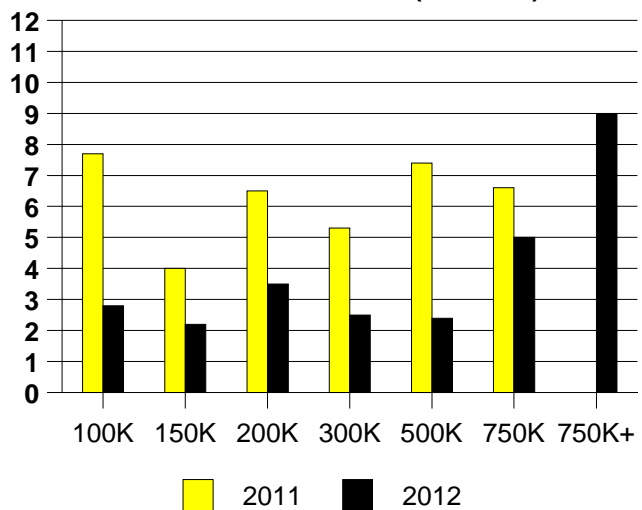
AVERAGE OVERPRICING
Original List Price to Sale Price

2011	8.9%
2012	5.8%

MONTHLY SALES (AREA 18)



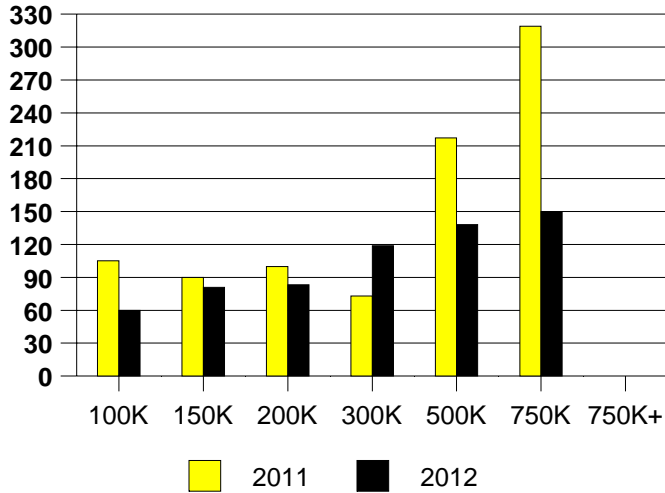
Inventory not shown where no sales
MONTHS OF INVENTORY (AREA 18)



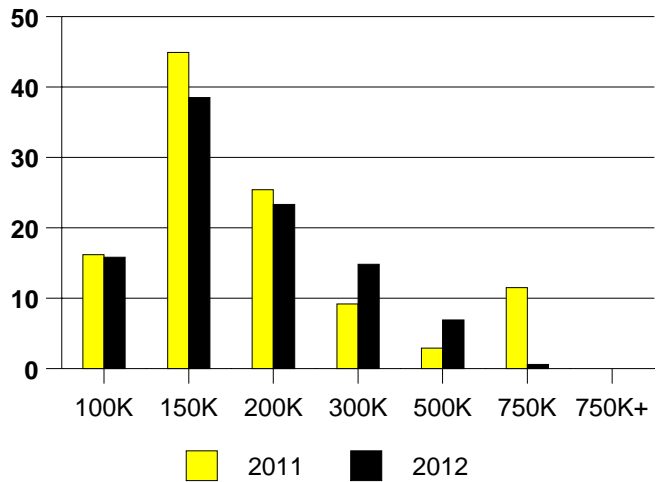
NTREIS Sold informaton as of 07/03/2012

	<u>2011</u>	<u>2012</u>
Total Sold Volume	\$ 41,430,910	\$ 52,774,530
Number of Sales	272	317
Median Sale Price	\$ 135,500	\$ 148,250

DAYS ON THE MARKET (DENTON)



DENTON MARKET SHARE BY PRICE RANGE



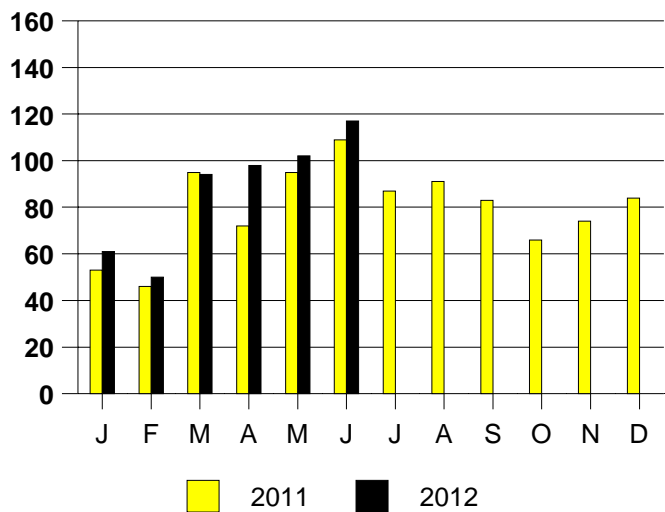
SALE/LIST PRICE RATIO

0K-100K	96.7%
101K-150K	97.6%
151K-200K	97.5%
201K-300K	95.8%
301K-500K	95.0%
501K-750K	95.8%
751K+	NONE

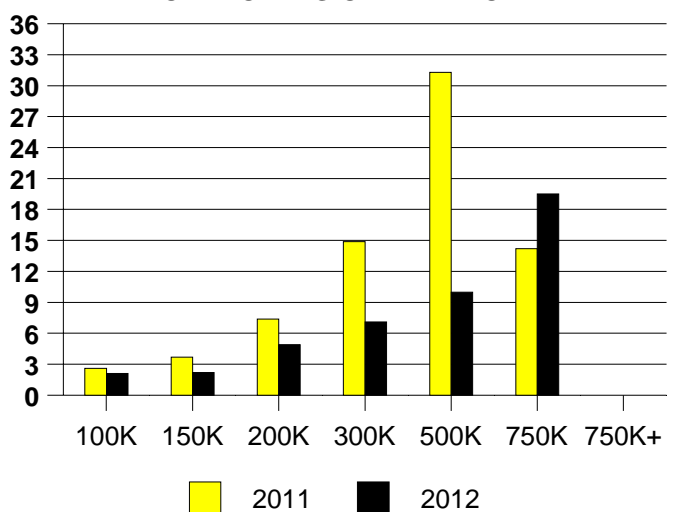
AVERAGE OVERPRICING
Original List Price to Sale Price

2011	6.7%
2012	6.7%

DENTON MONTHLY SALES



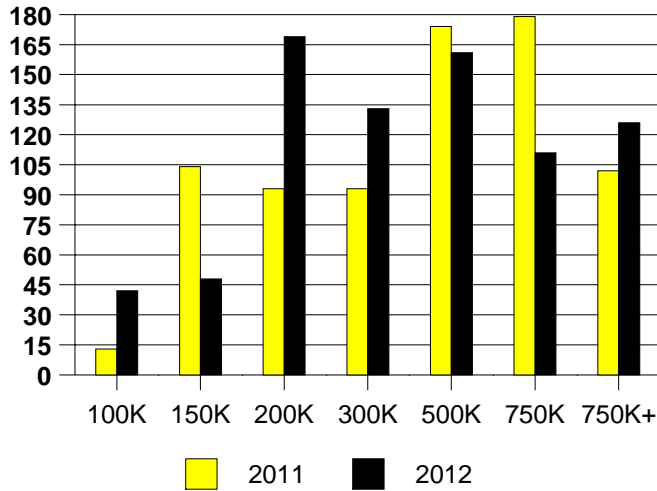
Inventory not shown where no sales
DENTON MONTHS OF INVENTORY



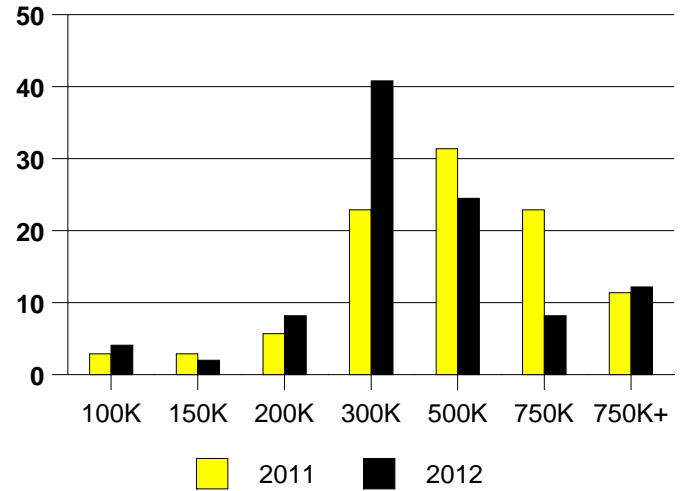
NTREIS Sold informaton as of 07/03/2012

	<u>2011</u>	<u>2012</u>
Total Sold Volume	\$ 15,371,416	\$ 20,410,245
Number of Sales	35	49
Median Sale Price	\$ 403,670	\$ 280,000

DAYS ON THE MARKET (FAIRVIEW)



FAIRVIEW MKT SHARE BY PRICE RANGE



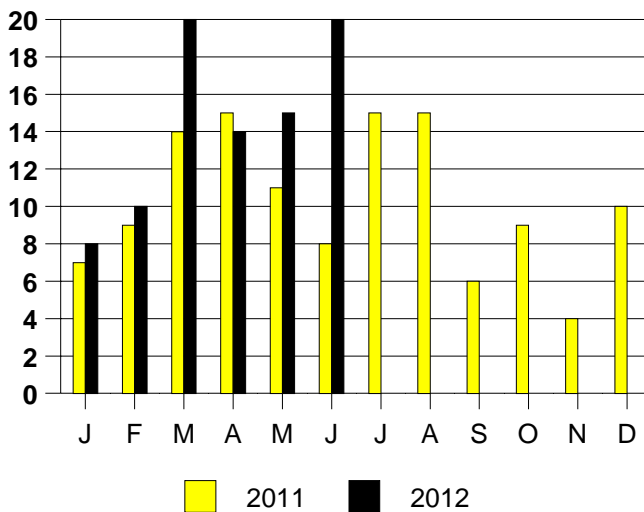
SALE/LIST PRICE RATIO

0K-100K	99.2%
101K-150K	100.0%
151K-200K	97.0%
201K-300K	95.8%
301K-500K	96.6%
501K-750K	98.0%
751K+	98.8%

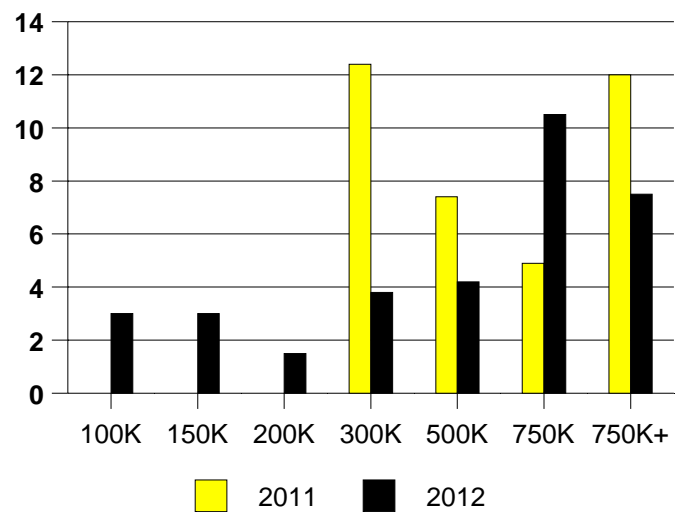
AVERAGE OVERPRICING
Original List Price to Sale Price

2011	7.7%
2012	6.7%

FAIRVIEW MONTHLY SALES

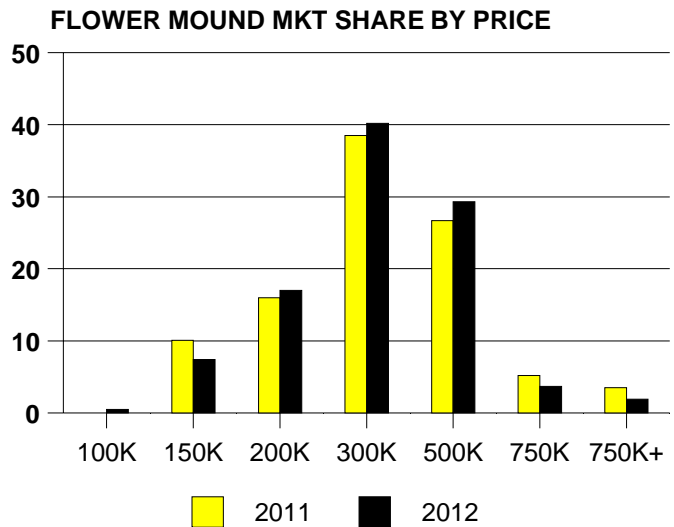
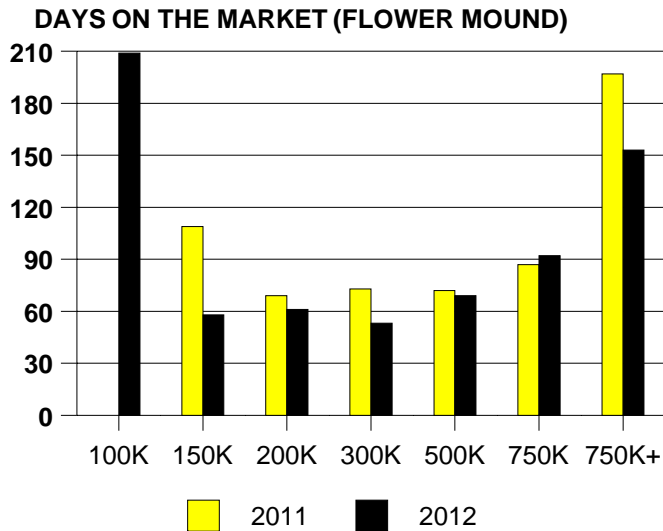


Inventory not shown where no sales
FAIRVIEW MONTHS OF INVENTORY



NTREIS Sold informaton as of 07/03/2012

	<u>2011</u>	<u>2012</u>
Total Sold Volume	\$ 88,268,544	\$ 109,199,666
Number of Sales	288	376
Median Sale Price	\$ 265,000	\$ 261,131



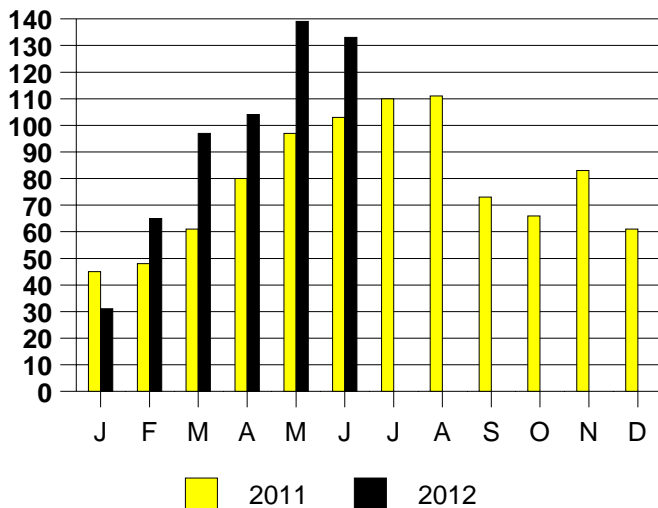
SALE/LIST PRICE RATIO

0K-100K	80.1%
101K-150K	95.5%
151K-200K	97.7%
201K-300K	98.1%
301K-500K	98.1%
501K-750K	97.0%
751K+	99.1%

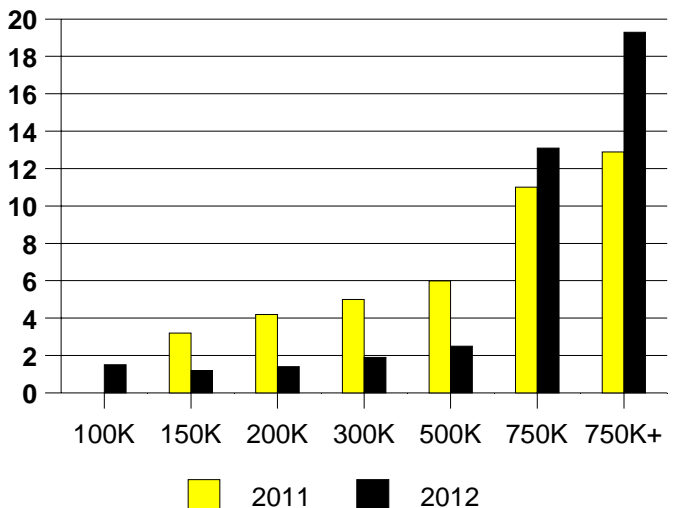
AVERAGE OVERPRICING
Original List Price to Sale Price

2011	6.2%
2012	4.5%

FLOWER MOUND MONTHLY SALES



FLOWER MOUND MONTHS OF INVENTORY

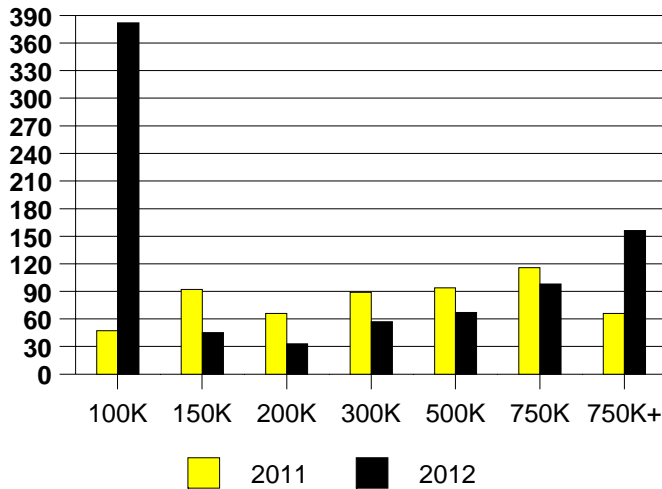


NTREIS Sold informaton as of 07/03/2012

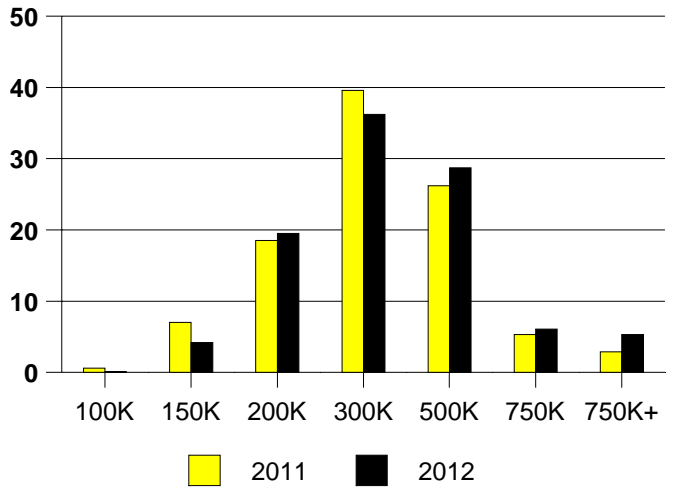
CHICAGO TITLE

	<u>2011</u>	<u>2012</u>
Total Sold Volume	\$ 210,332,464	\$ 258,430,579
Number of Sales	699	771
Median Sale Price	\$ 265,000	\$ 271,460

DAYS ON MARKET(FRISCO)



FRISCO MKT SHARE BY PRICE RANGE



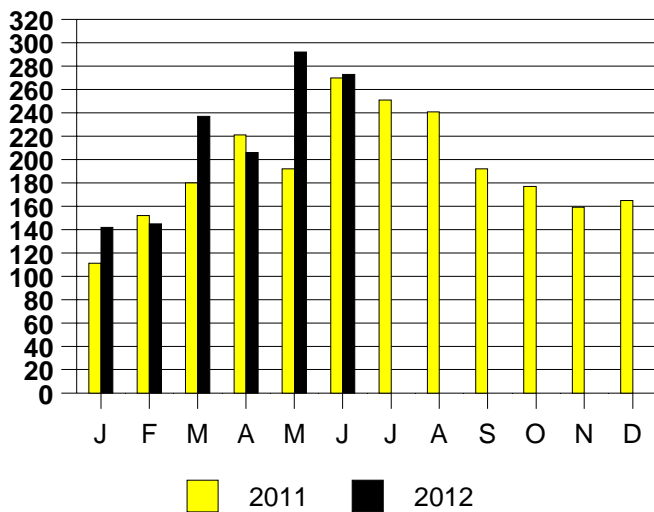
SALE/LIST PRICE RATIO

0K-100K	100.8%
101K-150K	96.8%
151K-200K	97.7%
201K-300K	97.4%
301K-500K	96.4%
501K-750K	96.0%
751K+	96.0%

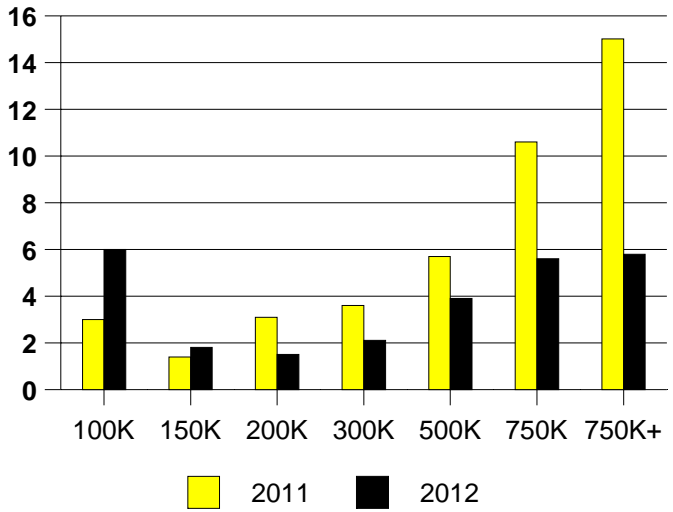
AVERAGE OVERPRICING
Original List Price to Sale Price

2011	6.6%
2012	5.0%

FRISCO MONTHLY SALES



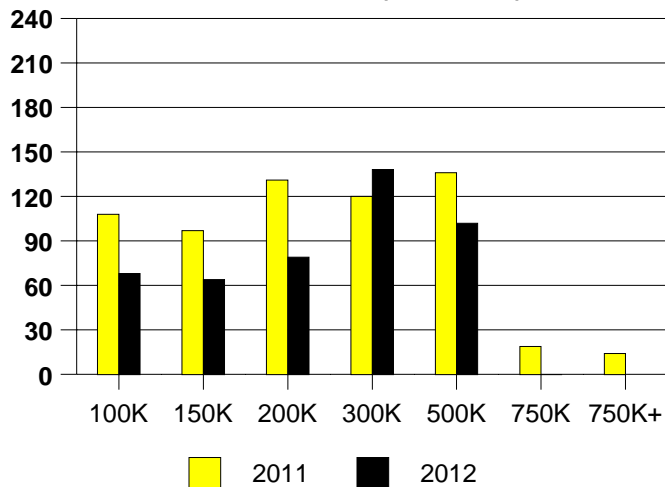
Inventory not shown where no sales
FRISCO MONTHS OF INVENTORY



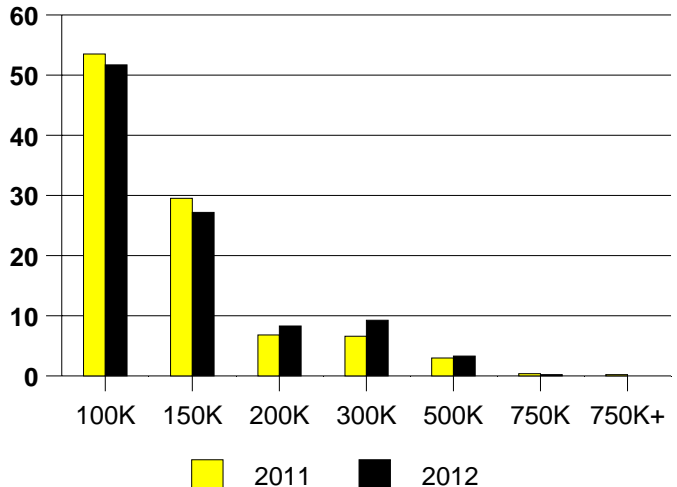
NTREIS Sold informaton as of 07/03/2012

	<u>2011</u>	<u>2012</u>
Total Sold Volume	\$ 60,451,145	\$ 61,188,088
Number of Sales	529	518
Median Sale Price	\$ 96,000	\$ 98,850

DAYS ON THE MARKET (GARLAND)



GARLAND MKT SHARE BY PRICE RANGE



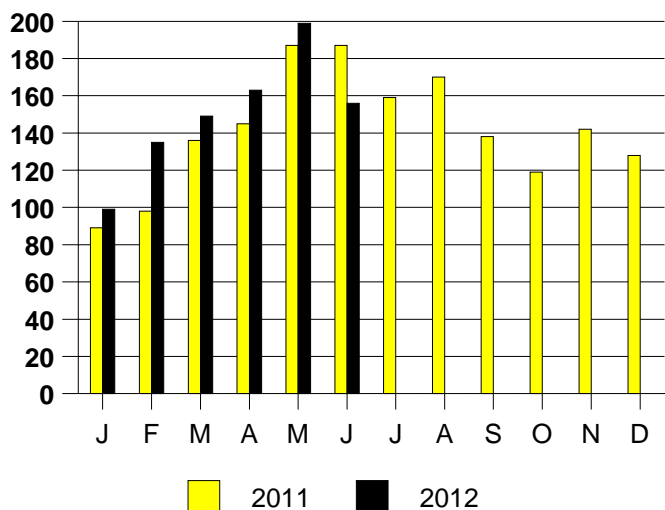
SALE/LIST PRICE RATIO

0K-100K	98.1%
101K-150K	98.2%
151K-200K	97.9%
201K-300K	96.8%
301K-500K	96.2%
501K-750K	100.0%
751K+	NONE

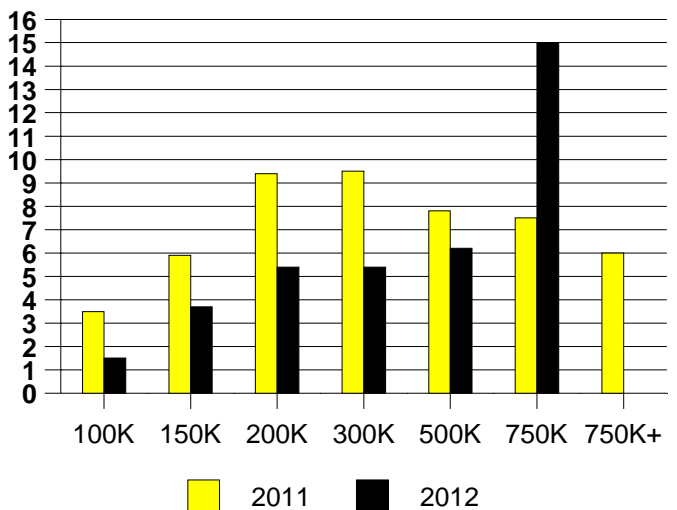
AVERAGE OVERPRICING
Original List Price to Sale Price

2011	12.3%
2012	6.4%

GARLAND MONTHLY SALES



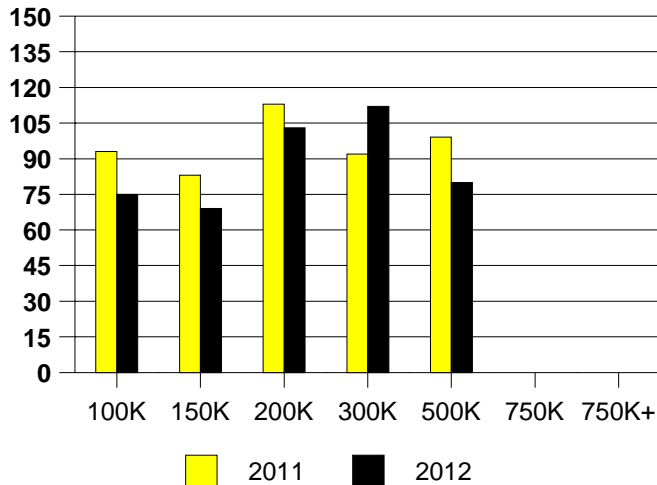
Inventory not shown where no sales
GARLAND MONTHS OF INVENTORY



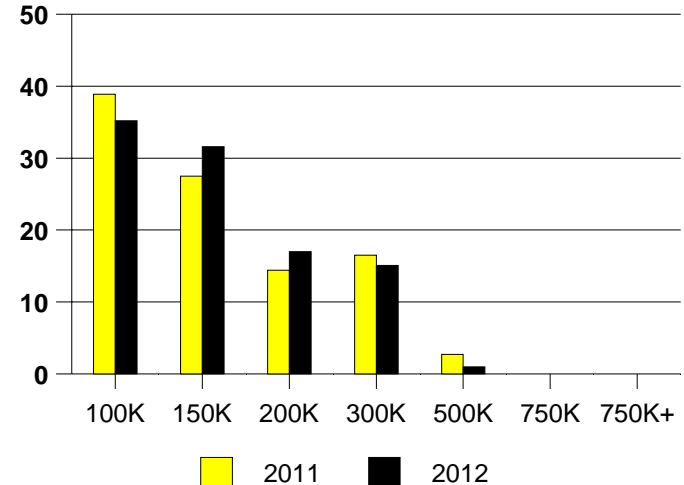
NTREIS Sold informaton as of 07/03/2012

	<u>2011</u>	<u>2012</u>
Total Sold Volume	\$50,375,144	\$ 50,861,763
Number of Sales	375	383
Median Sale Price	\$ 118,000	\$ 127,000

DAYS ON THE MARKET (GRAND PRAIRIE)



GRAND PRAIRIE MKT SHARE BY PRICE RANGE



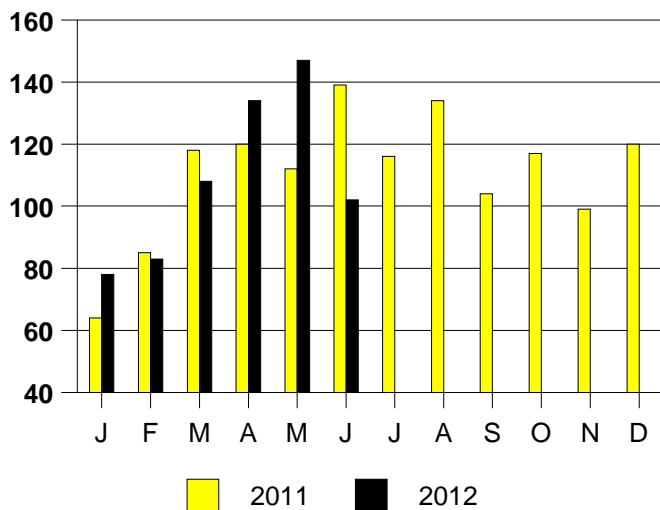
SALE/LIST PRICE RATIO

0K-100K	96.8%
101K-150K	99.3%
151K-200K	98.2%
201K-300K	97.9%
301K-500K	89.7%
501K-750K	NONE
751K+	NONE

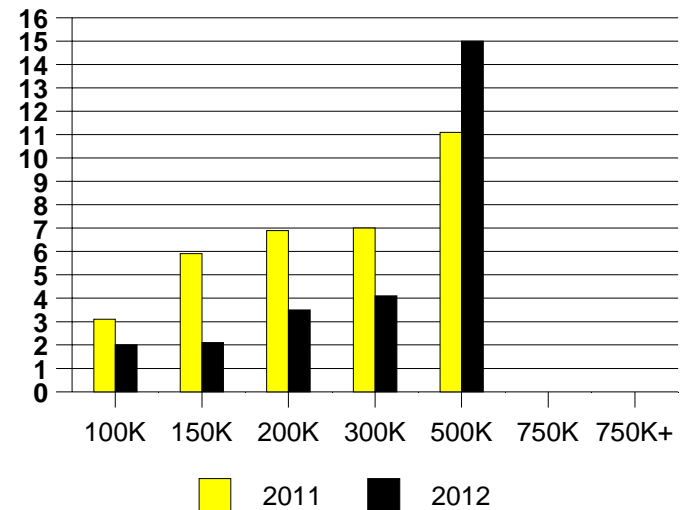
AVERAGE OVERPRICING
Original List Price to Sale Price

2011	9.4%
2012	6.4%

GRAND PRAIRIE MONTHLY SALES



GRAND PRAIRIE MONTHS OF INVENTORY

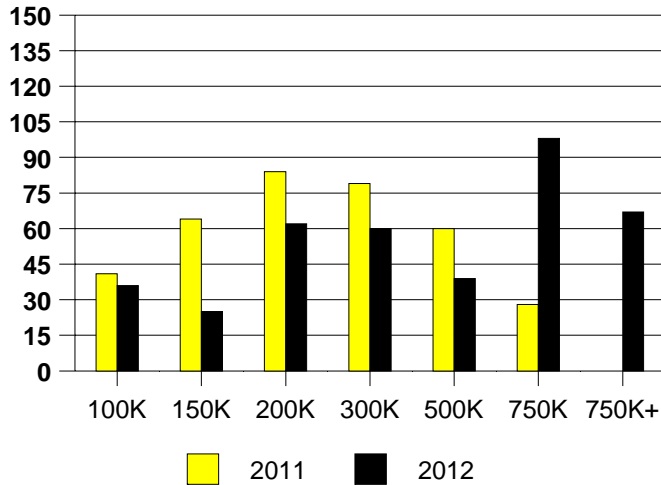


NTREIS Sold informaton as of 07/03/2012

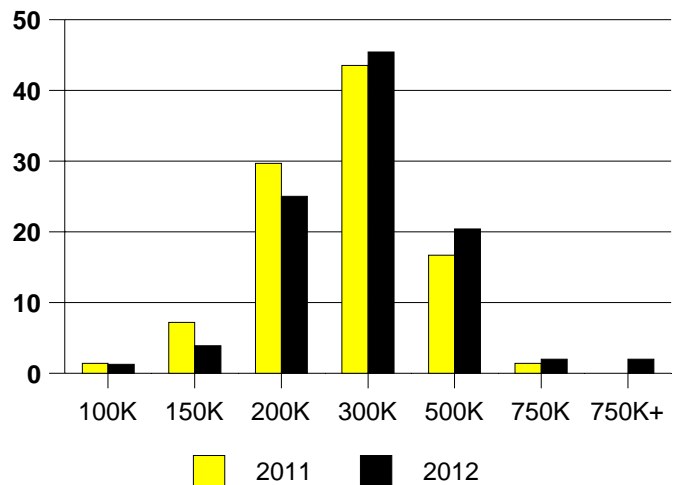
CHICAGO TITLE

	<u>2011</u>	<u>2012</u>
Total Sold Volume	\$ 33,398,655	\$ 40,982,000
Number of Sales	138	152
Median Sale Price	\$ 229,500	\$ 250,125

DAYS ON THE MARKET (GRAPEVINE)



GRAPEVINE MKT SHARE BY PRICE RANGE



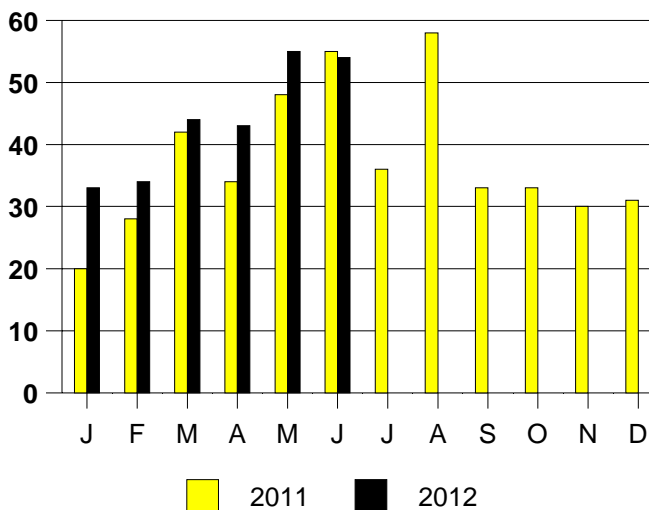
SALE/LIST PRICE RATIO

0K-100K	96.9%
101K-150K	95.6%
151K-200K	98.5%
201K-300K	97.6%
301K-500K	98.1%
501K-750K	99.7%
751K+	110.0%

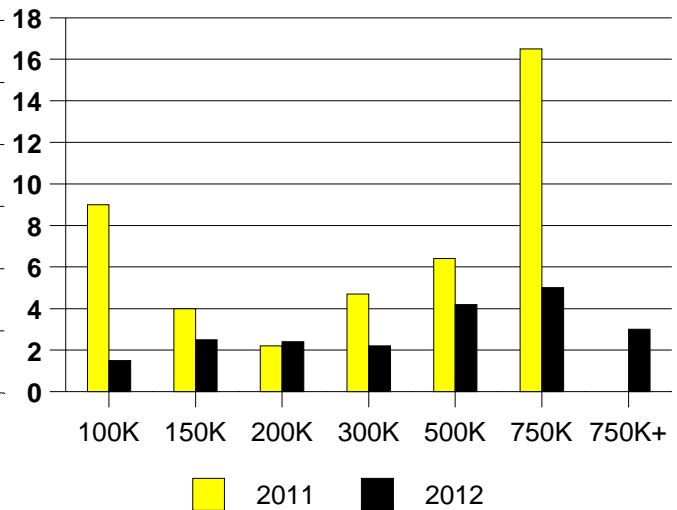
AVERAGE OVERPRICING
Original List Price to Sale Price

2011	5.5%
2012	3.5%

GRAPEVINE MONTHLY SALES



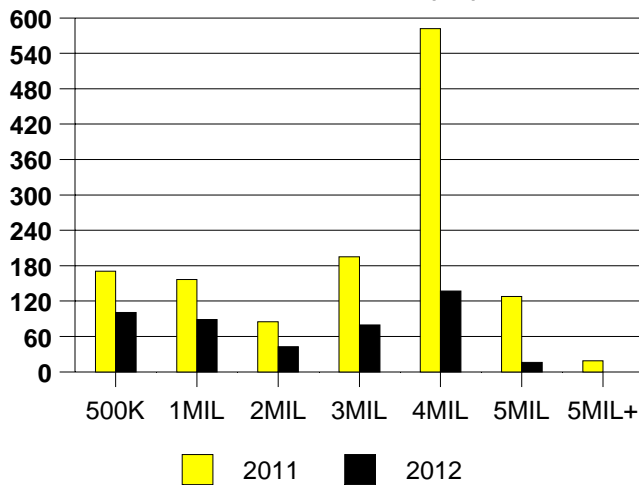
Inventory not shown where no sales
GRAPEVINE MONTHS OF INVENTORY



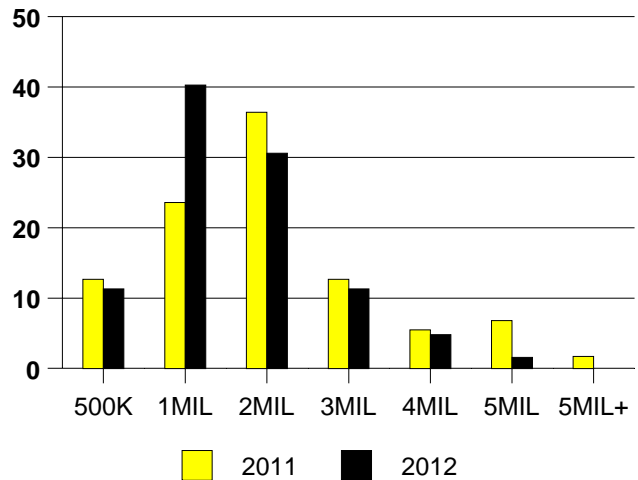
NTREIS Sold informaton as of 07/03/2012

	<u>2011</u>	<u>2012</u>
Total Sold Volume	\$ 92,133,275	\$ 81,793,119
Number of Sales	55	62
Median Sale Price	\$ 1,200,000	\$ 995,000

DAYS ON THE MARKET (HP)



MKT SHARE BY PRICE RANGE (HP)



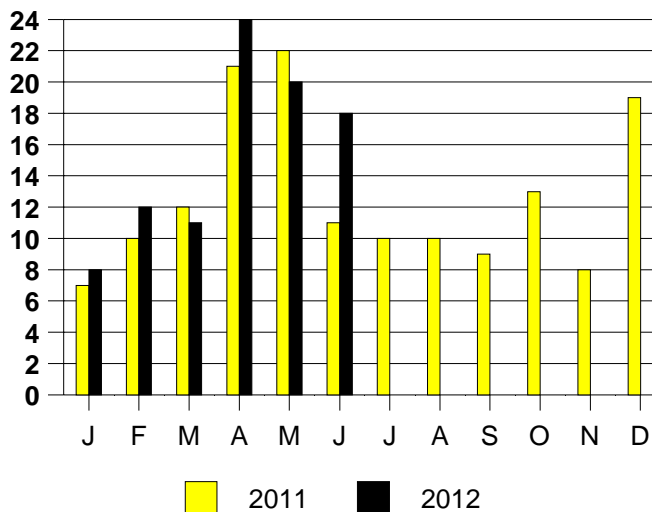
SALE/LIST PRICE RATIO

0K-500K	97.0%
501K-1MIL	96.3%
1MIL-2MIL	96.6%
2MIL-3MIL	95.6%
3MIL-4MIL	98.5%
4MIL-5MIL	100.0%
5MIL+	NONE

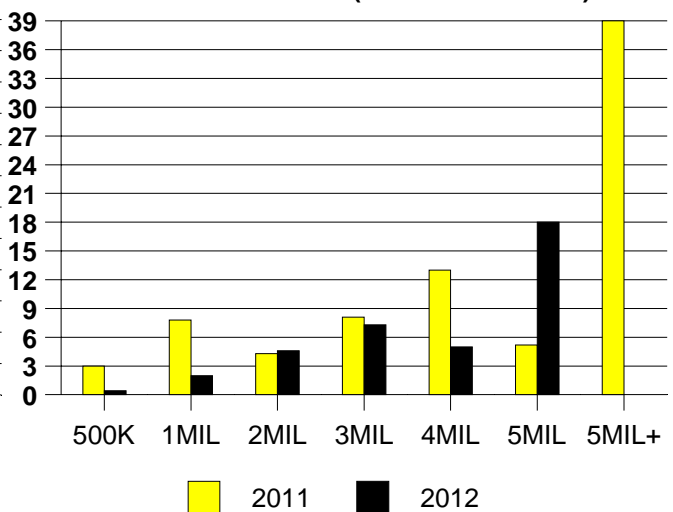
AVERAGE OVERPRICING

Orig List Price to Sale Price	
2011	10.0%
2012	5.8%

HIGHLAND PARK MONTHLY SALES



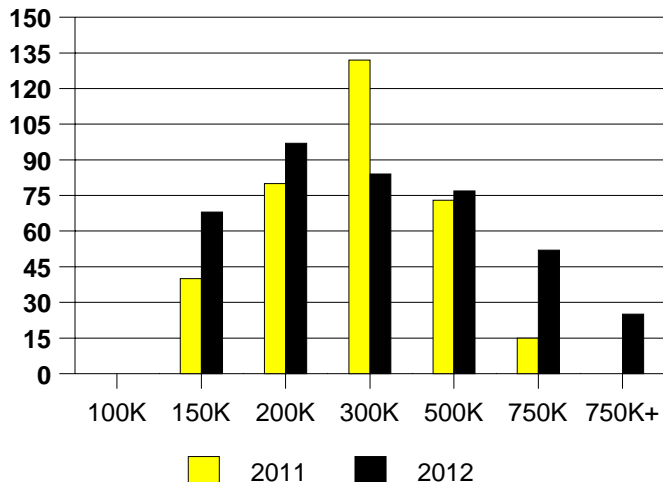
MONTHS OF INVENTORY (HIGHLAND PARK)
Inventory not shown where no sales



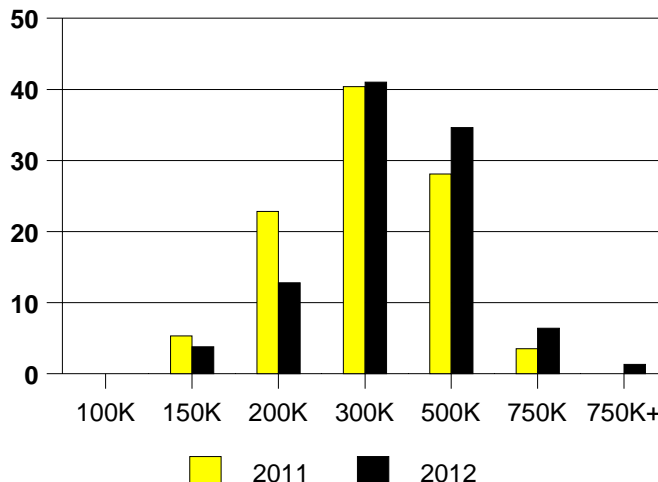
NTREIS Sold information as of 07/03/2012

	<u>2011</u>	<u>2012</u>
Total Sold Volume	\$15,835,799	\$24,254,081
Number of Sales	57	78
Median Sale Price	\$ 255,000	\$ 275,000

DAYS ON THE MARKET(HV)



% MARKET SHARE BY PRICE RANGE HV



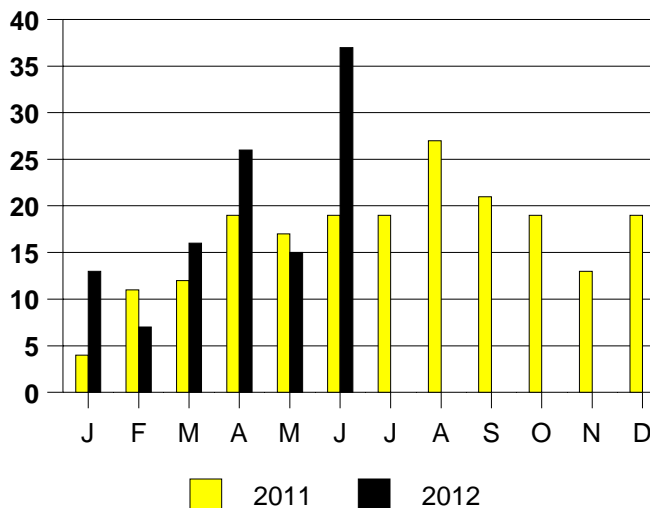
SALE/LIST PRICE RATIO

0K-100K	NONE
101K-150K	99.6%
151K-200K	96.7%
201K-300K	98.8%
301K-500K	98.1%
501K-750K	95.4%
751K+	100.0%

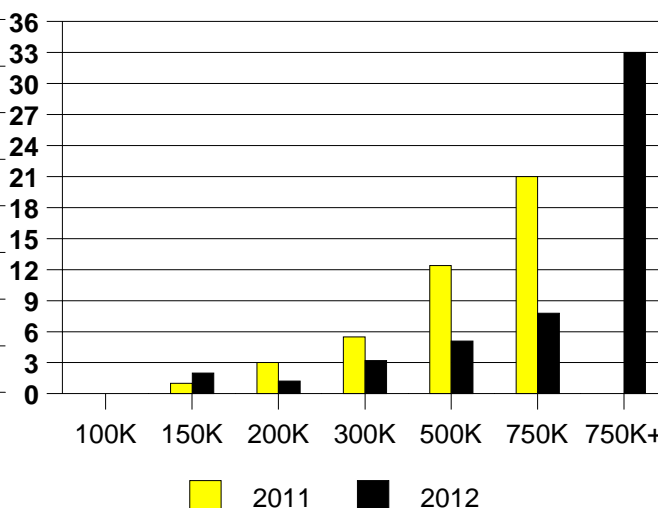
AVERAGE OVERPRICING

Original List Price to Sale Price	
2011	6.0%
2012	4.2%

HIGH VILLAGE MONTHLY SALES



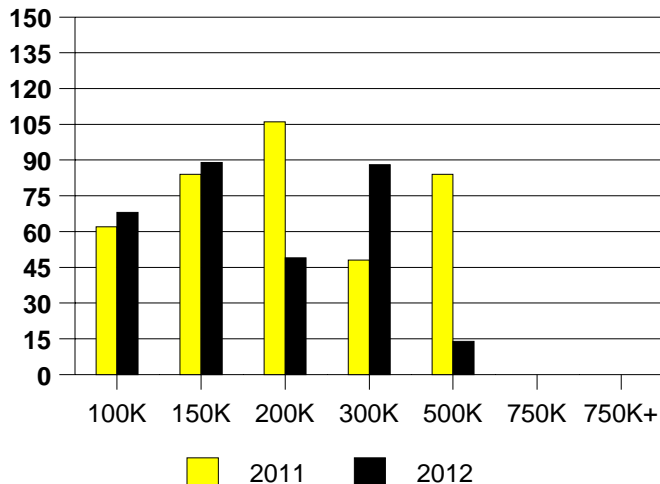
HIGHLAND VILLGE MONTHS OF INVENTORY



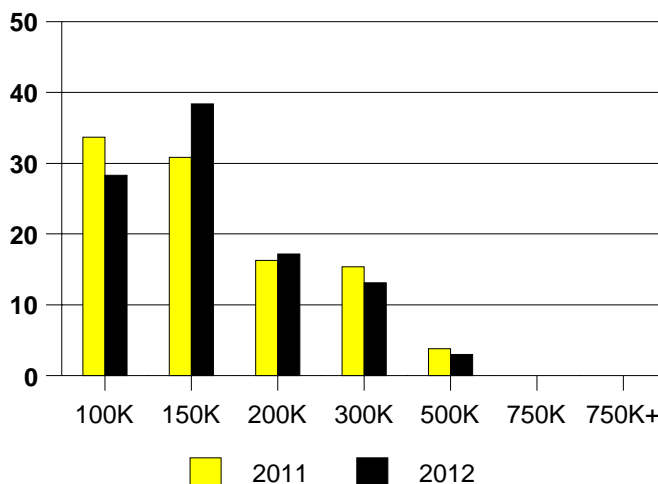
NTREIS Sold informaton as of 07/03/2012

	<u>2011</u>	<u>2012</u>
Total Sold Volume	\$ 14,383,041	\$ 14,094,895
Number of Sales	104	99
Median Sale Price	\$ 125,250	\$ 135,000

DAYS ON THE MARKET (HURST)



HURST MKT SHARE BY PRICE RANGE



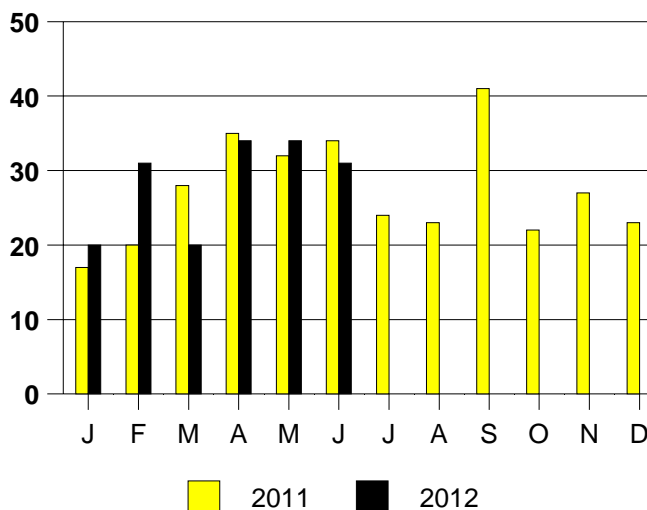
SALE/LIST PRICE RATIO

0K-100K	95.8%
101K-150K	96.8%
151K-200K	94.9%
201K-300K	99.1%
301K-500K	99.1%
501K-750K	NONE
751K+	NONE

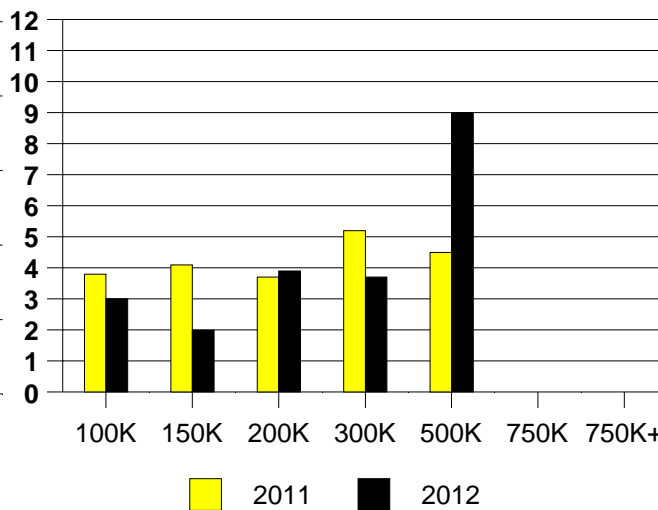
AVERAGE OVERPRICING
Original List Price to Sale Price

2011	5.9%
2012	8.3%

HURST MONTHLY SALES

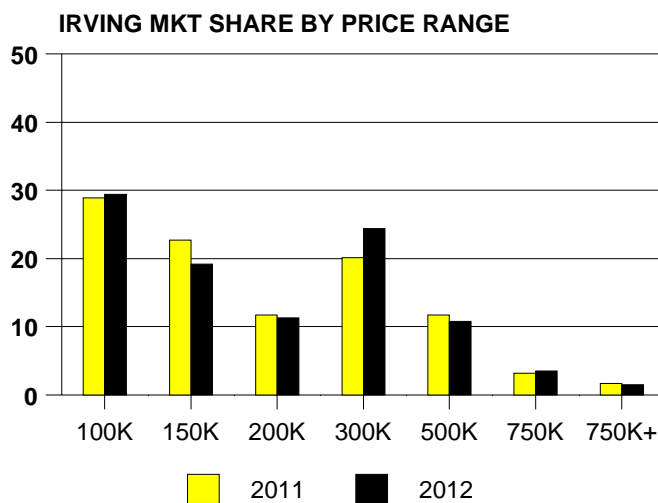
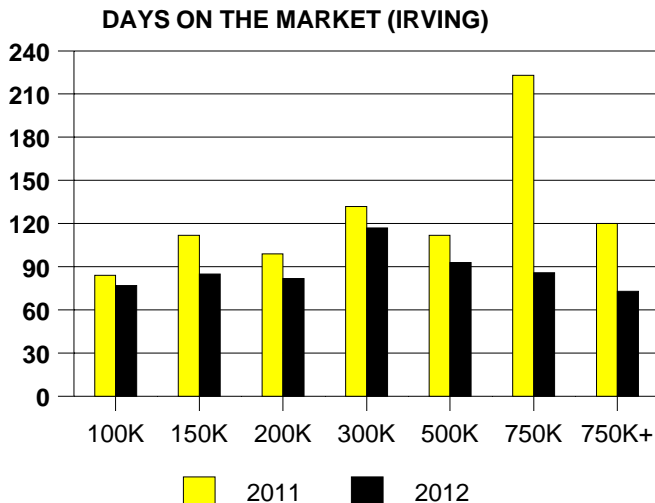


Inventory not shown where no sales
HURST MONTHS OF INVENTORY



NTREIS Sold informaton as of 07/03/2012

	<u>2011</u>	<u>2012</u>
Total Sold Volume	\$ 67,738,683	\$ 69,172,187
Number of Sales	343	344
Median Sale Price	\$ 146,500	\$ 156,510



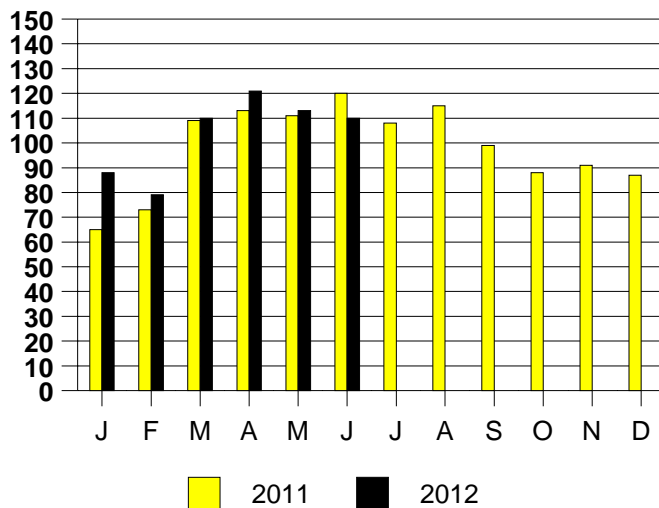
SALE/LIST PRICE RATIO

0K-100K	97.4%
101K-150K	97.4%
151K-200K	96.9%
201K-300K	96.1%
301K-500K	96.4%
501K-750K	94.7%
751K+	96.9%

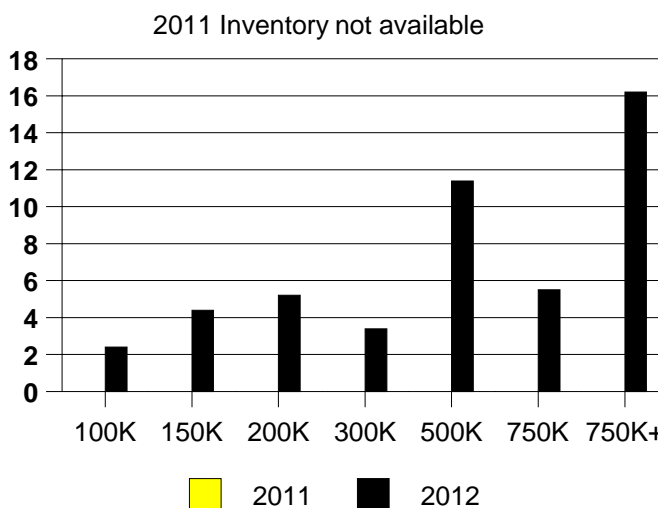
AVERAGE OVERPRICING
Original List Price to Sale Price

2011	10.6%
2012	6.7%

IRVING MONTHLY SALES



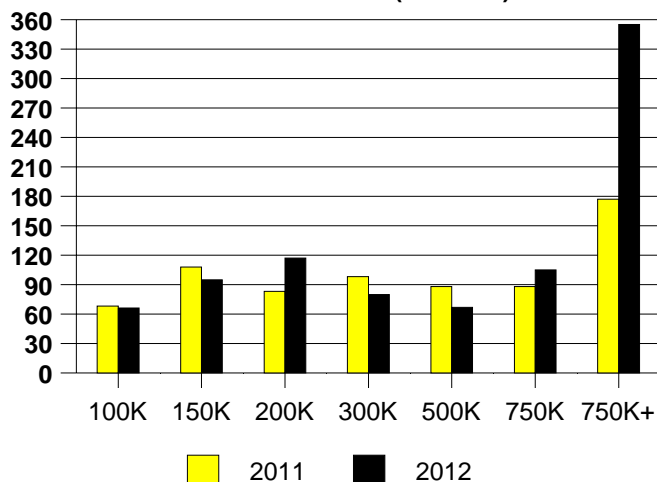
Inventory not shown where no sales
IRVING MONTHS OF INVENTORY



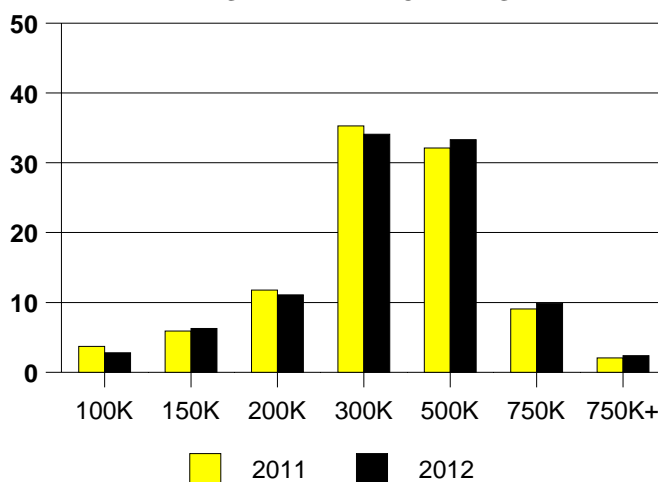
NTREIS Sold informaton as of 07/03/2012

	<u>2011</u>	<u>2012</u>
Total Sold Volume	\$ 58,780,521	\$ 81,810,182
Number of Sales	187	252
Median Sale Price	\$ 280,000	\$ 289,500

DAYS ON THE MARKET (KELLER)



KELLER MKT SHARE BY PRICE RANGE



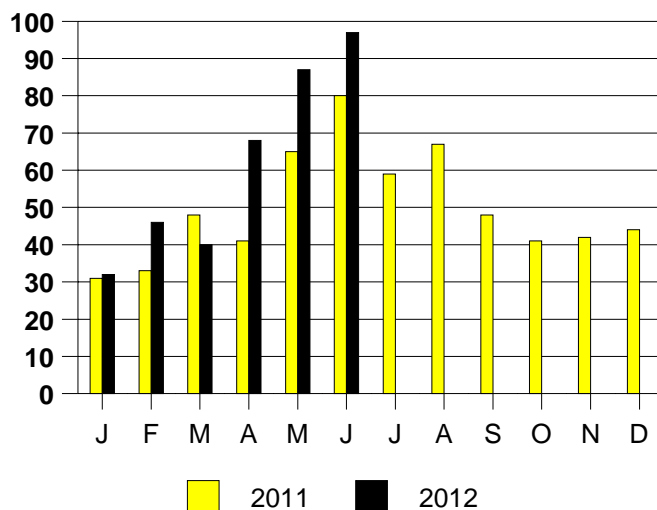
SALE/LIST PRICE RATIO

0K-100K	98.3%
101K-150K	98.5%
151K-200K	96.8%
201K-300K	98.1%
301K-500K	97.3%
501K-750K	97.0%
751K+	92.8%

AVERAGE OVERPRICING

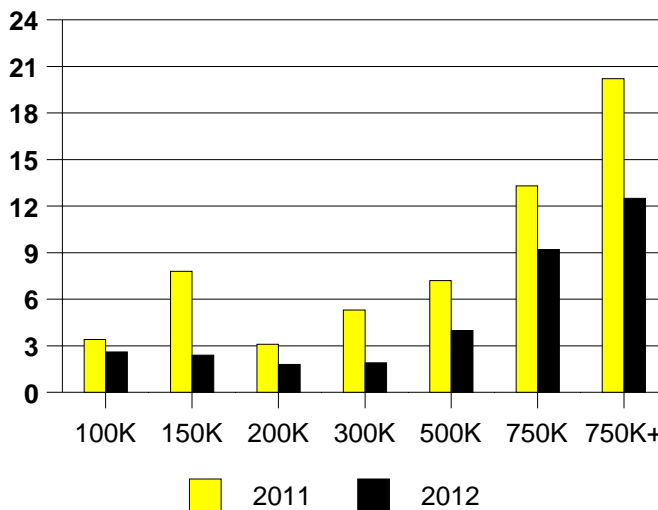
Original List Price to Sale Price	
2011	7.3%
2012	6.2%

KELLER MONTHLY SALES



Inventory not shown where no sales

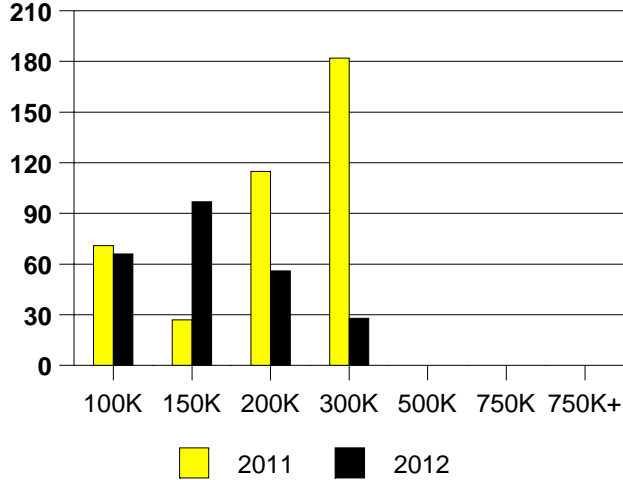
KELLER MONTHS OF INVENTORY



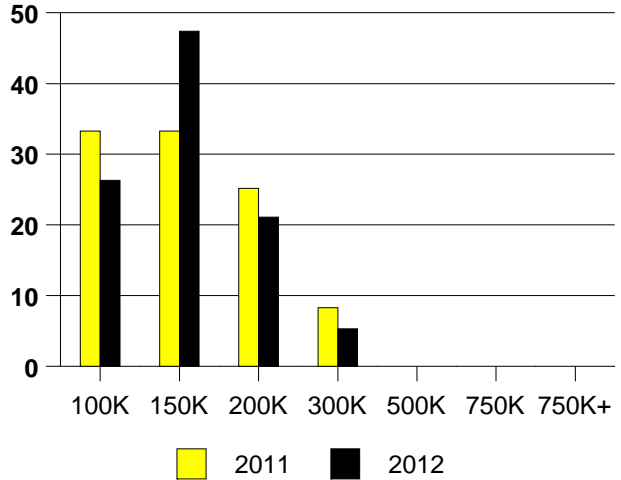
NTREIS Sold informaton as of 07/03/2012

	<u>2011</u>	<u>2012</u>
Total Sold Volume	\$ 3,003,769	\$ 2,422,761
Number of Sales	24	19
Median Sale Price	\$ 127,787	\$ 128,500

LAKE DALLAS DAYS ON THE MARKET



LAKE DALLAS MKT SHARE BY PRICE RANGE



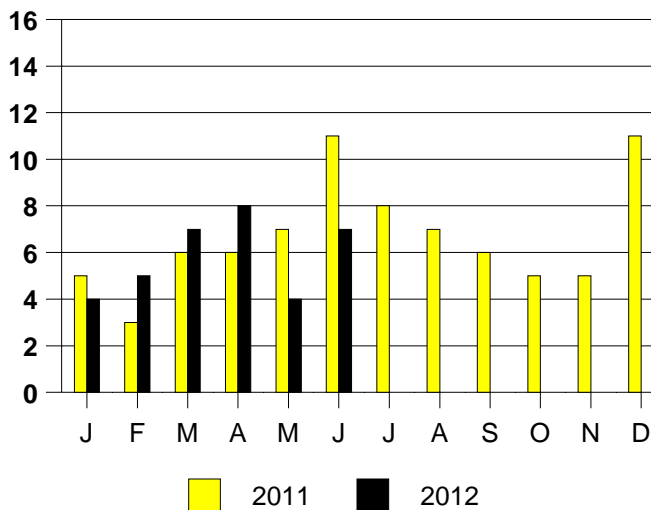
SALE/LIST PRICE RATIO

0K-100K	94.4%
101K-150K	97.3%
151K-200K	98.5%
201K-300K	97.0%
301K-500K	NONE
501K-750K	NONE
751K+	NONE

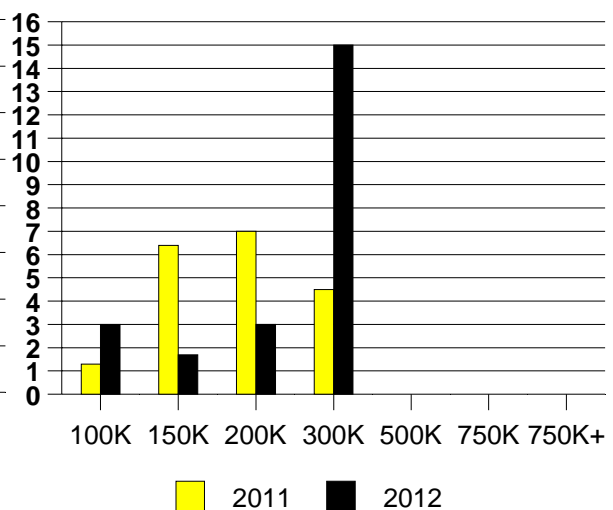
AVERAGE OVERPRICING
Original List Price to Sale Price

2011	7.0%
2012	8.3%

LAKE DALLAS MONTHLY SALES

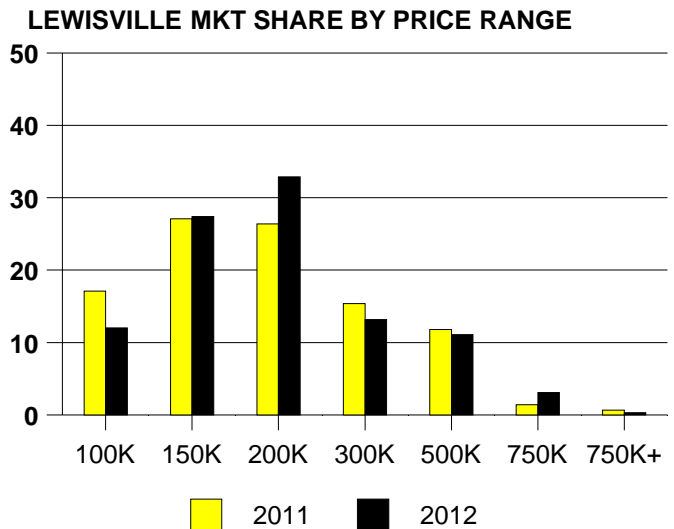
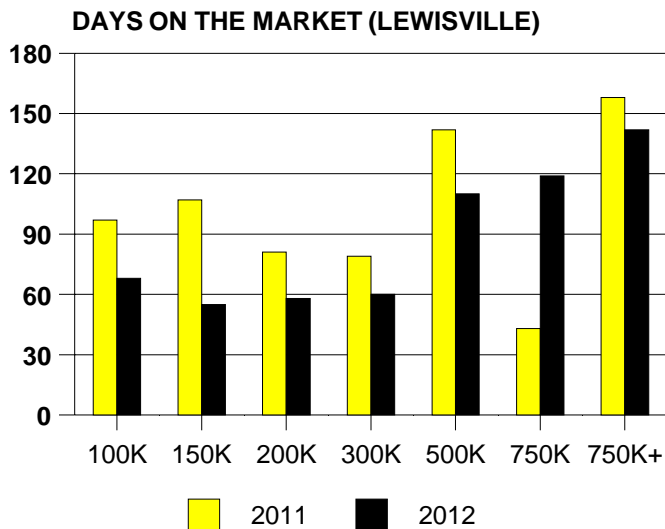


LAKE DALLAS MONTHS OF INVENTORY



NTREIS Sold informaton as of 07/03/2012

	<u>2011</u>	<u>2012</u>
Total Sold Volume	\$ 53,282,053	\$ 64,629,096
Number of Sales	280	325
Median Sale Price	\$ 159,000	\$ 165,000



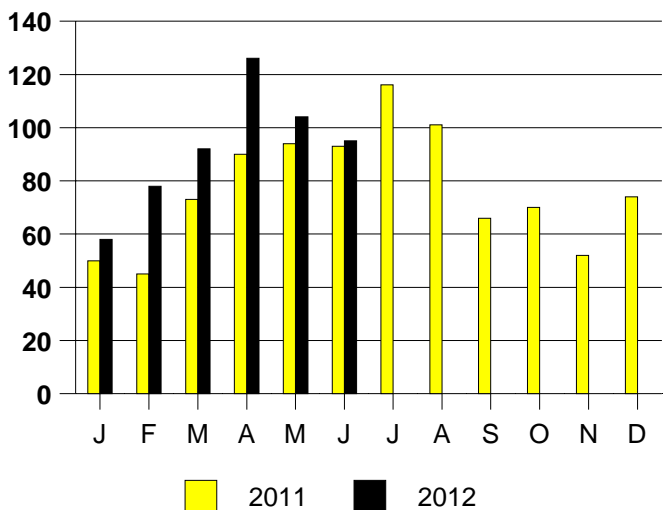
SALE/LIST PRICE RATIO

0K-100K	98.1%
101K-150K	97.7%
151K-200K	98.2%
201K-300K	98.0%
301K-500K	96.2%
501K-750K	95.2%
751K+	100.0%

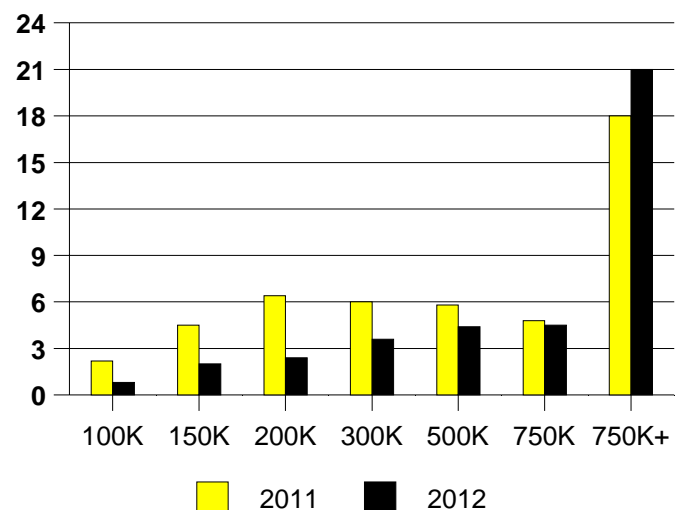
AVERAGE OVERPRICING
Original List Price to Sale Price

2011	7.6%
2012	4.5%

LEWISVILLE MONTHLY SALES



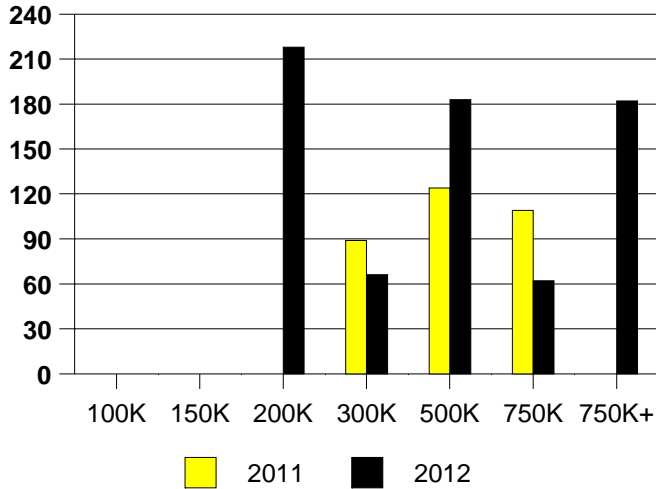
Inventory not shown where no sales
LEWISVILLE MONTHS OF INVENTORY



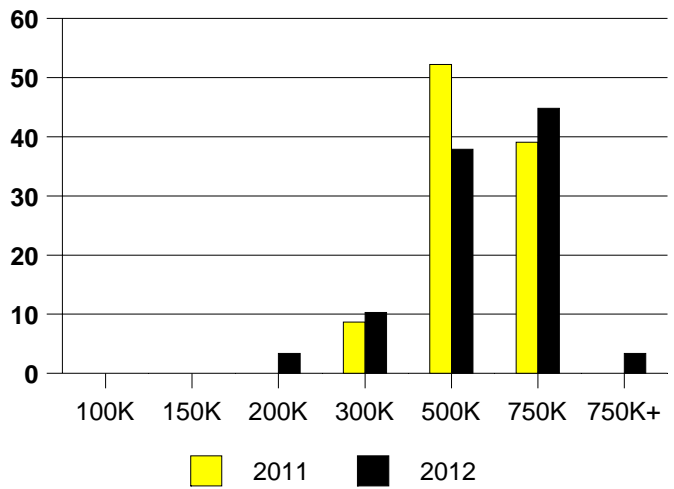
NTREIS Sold informaton as of 07/03/2012

	<u>2011</u>	<u>2012</u>
Total Sold Volume	\$ 10,745,681	\$ 14,198,000
Number of Sales	23	29
Median Sale Price	\$ 465,000	\$ 480,000

DAYS ON THE MARKET (LUCAS)



LUCAS MKT SHARE BY PRICE RANGE



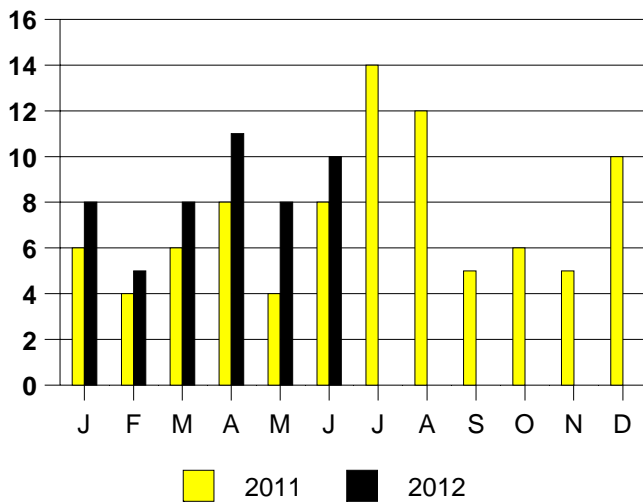
SALE/LIST PRICE RATIO

0K-100K	NONE
101K-150K	NONE
151K-200K	89.8%
201K-300K	90.5%
301K-500K	96.4%
501K-750K	98.1%
751K+	100.0%

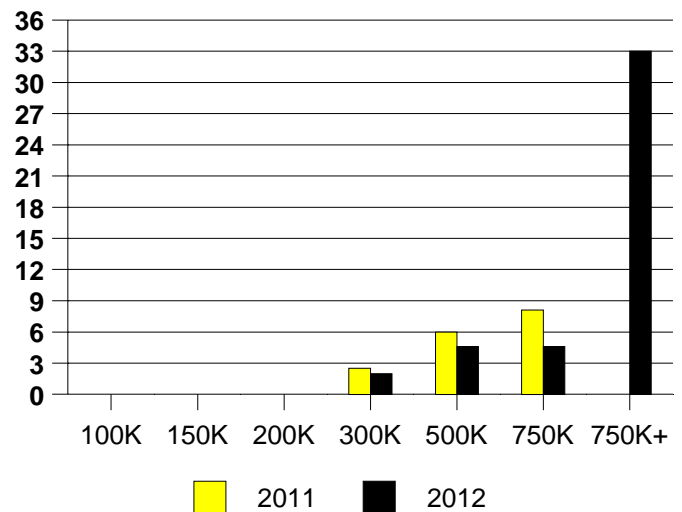
AVERAGE OVERPRICING
Original List Price to Sale Price

2011	3.4%
2012	7.7%

LUCAS MONTHLY SALES

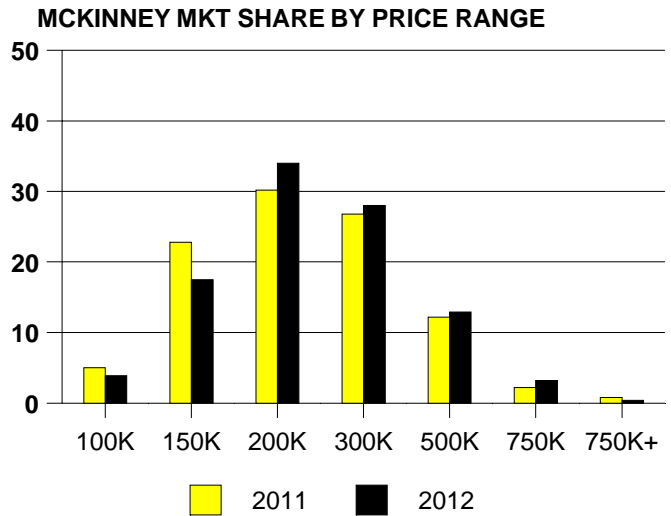
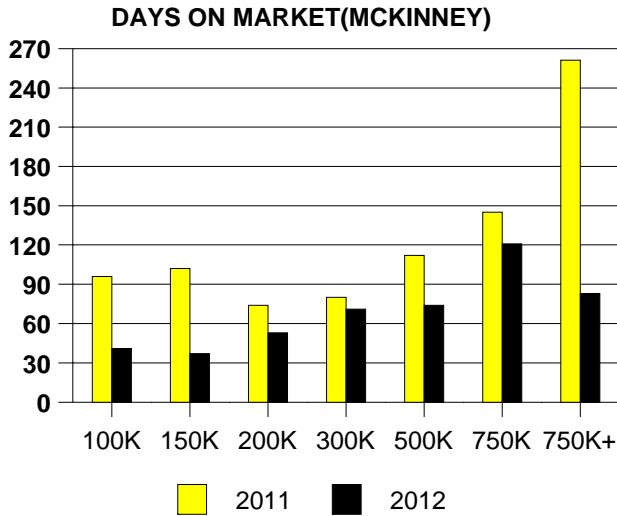


Inventory not shown where no sales
LUCAS MONTHS OF INVENTORY



NTREIS Sold informaton as of 07/03/2012

	<u>2011</u>	<u>2012</u>
Total Sold Volume	\$ 158,023,190	\$ 178,099,238
Number of Sales	724	788
Median Sale Price	\$ 184,350	\$ 192,875



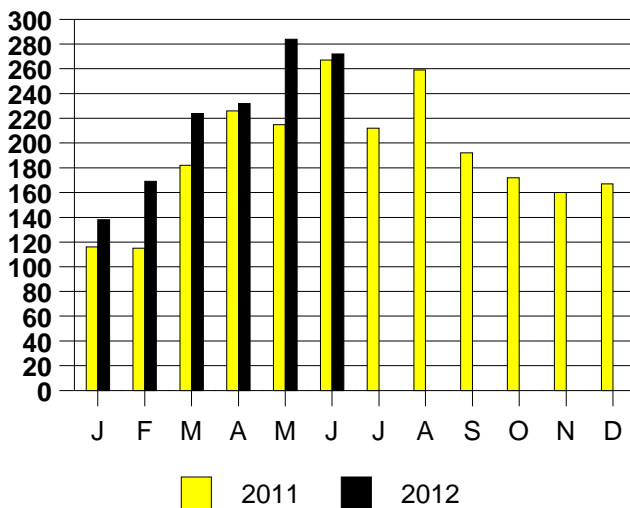
SALE/LIST PRICE RATIO

0K-100K	95.9%
101K-150K	98.3%
151K-200K	98.2%
201K-300K	97.3%
301K-500K	96.6%
501K-750K	95.8%
751K+	98.3%

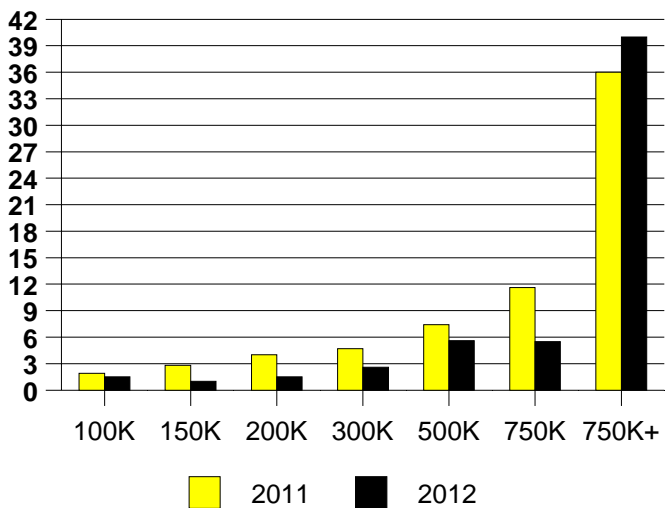
AVERAGE OVERPRICING
Original List Price to Sale Price

2011	6.5%
2012	4.1%

MCKINNEY MONTHLY SALES



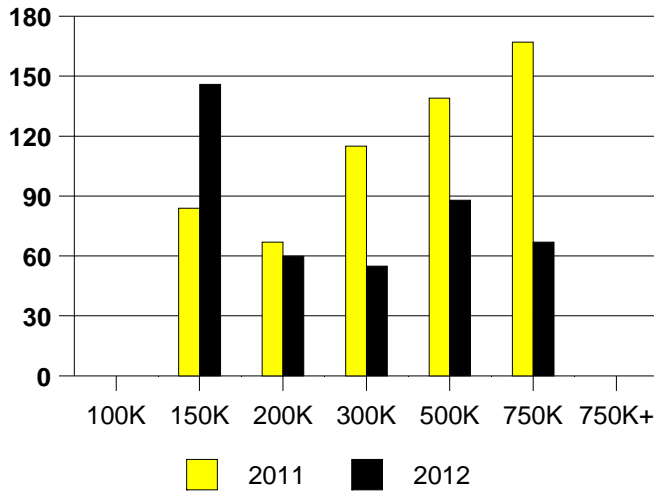
Inventory not shown where no sales
MCKINNEY MONTHS OF INVENTORY



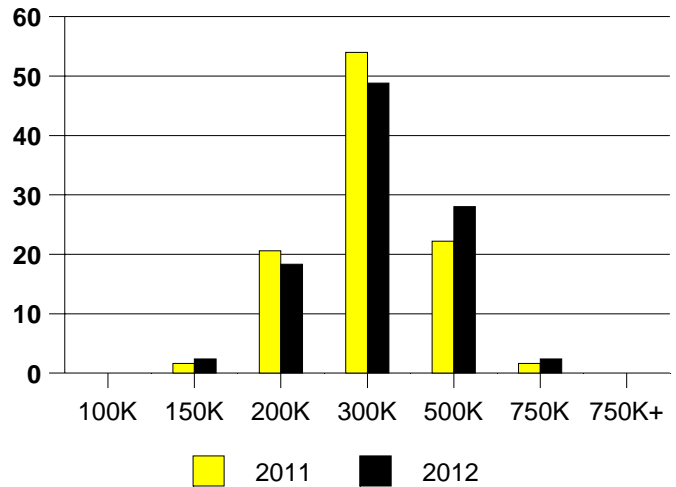
NTREIS Sold informaton as of 07/03/2012

	<u>2011</u>	<u>2012</u>
Total Sold Volume	\$17,192,583	\$ 22,190,475
Number of Sales	63	82
Median Sale Price	\$ 271,000	\$ 246,000

DAYS ON THE MARKET (MURPHY)



MURPHY MKT SHARE BY PRICE RANGE



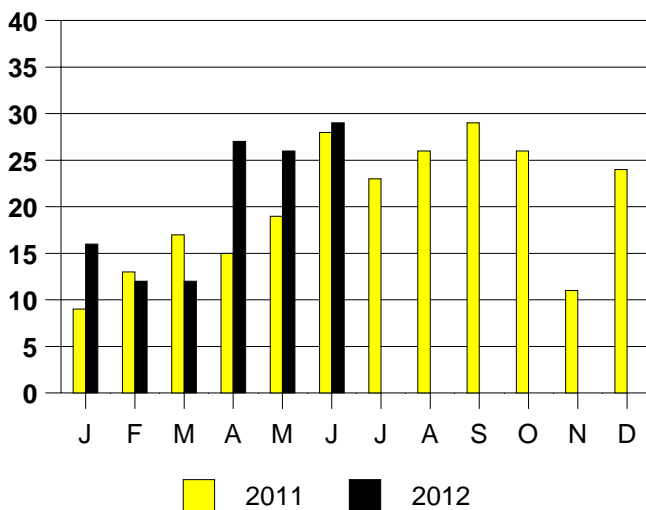
SALE/LIST PRICE RATIO

0K-100K	96.4%
101K-150K	98.0%
151K-200K	97.6%
201K-300K	96.5%
301K-500K	97.3%
501K-750K	NONE
751K+	NONE

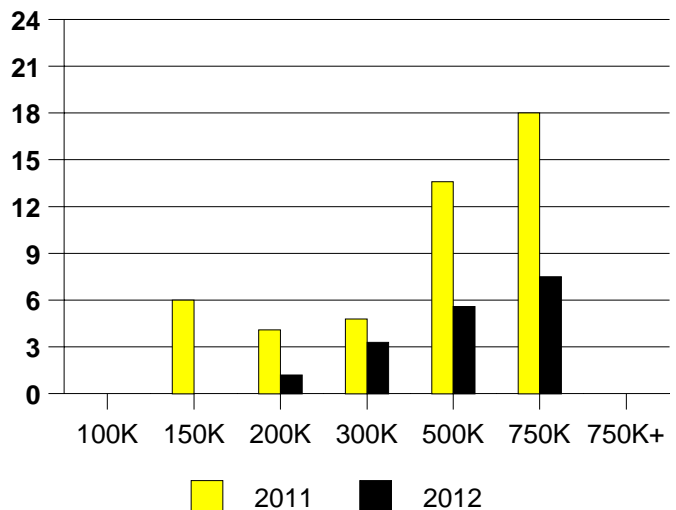
AVERAGE OVERPRICING
Original List Price to Sale Price

2011	6.6%
2012	5.0%

MURPHY MONTHLY SALES



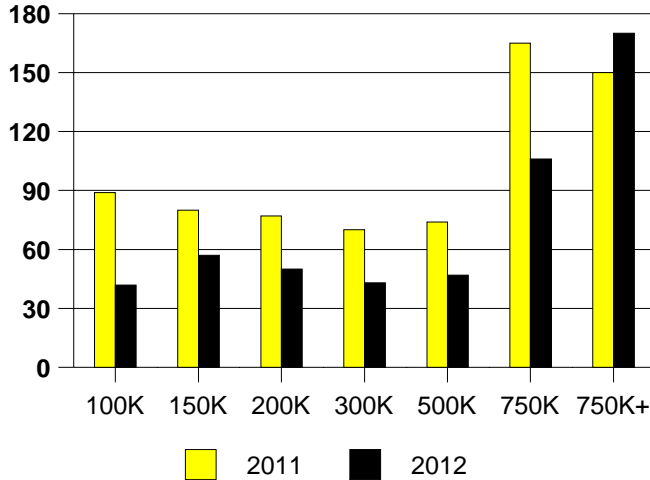
Inventory not shown where no sales
MURPHY MONTHS OF INVENTORY



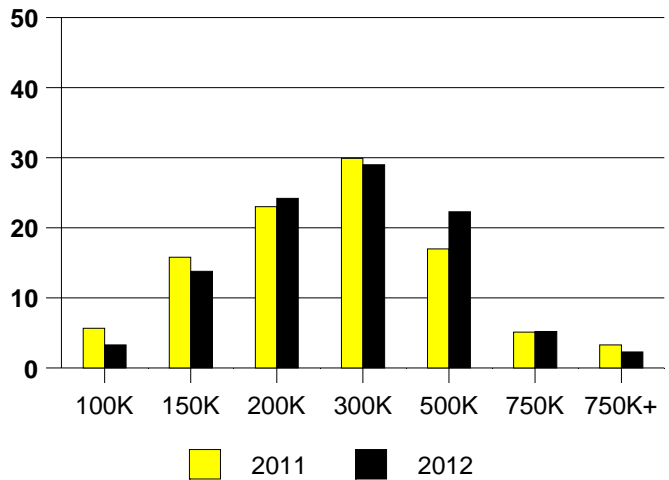
NTREIS Sold informaton as of 07/03/2012

	<u>2011</u>	<u>2012</u>
Total Sold Volume	\$ 213,102,926	\$ 242,619,746
Number of Sales	792	886
Median Sale Price	\$ 217,000	\$ 226,000

DAYS ON MARKET(PLANO)



PLANO MKT SHARE BY PRICE RANGE



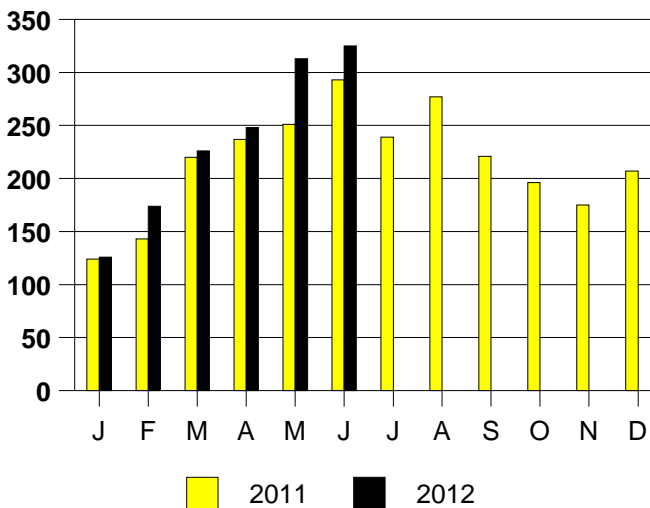
SALE/LIST PRICE RATIO

0K-100K	99.7%
101K-150K	98.0%
151K-200K	97.6%
201K-300K	97.8%
301K-500K	97.2%
501K-750K	97.1%
751K+	95.1%

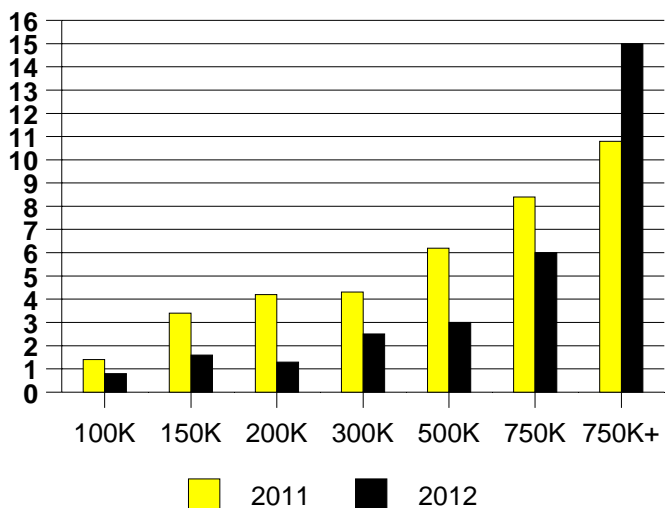
AVERAGE OVERPRICING
Original List Price to Sale Price

2011	6.9%
2012	4.4%

PLANO MONTHLY SALES



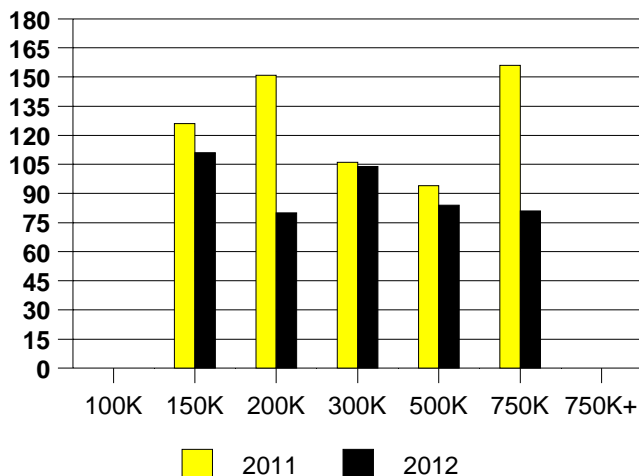
Inventory not shown where no sales
PLANO MONTHS OF INVENTORY



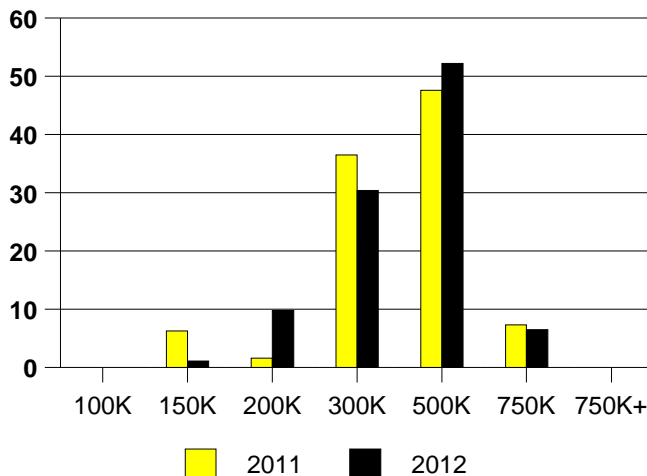
NTREIS Sold informaton as of 07/03/2012

	<u>2011</u>	<u>2012</u>
Total Sold Volume	\$ 21,568,552	\$ 30,899,144
Number of Sales	63	92
Median Sale Price	\$ 304,000	\$ 323,500

PROSPER DAYS ON THE MARKET



PROSPER MARKET SHARE BY PRICE RANGE



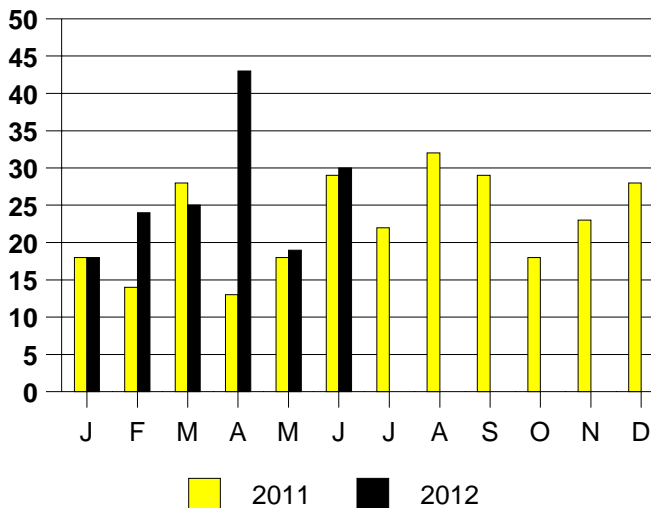
SALE/LIST PRICE RATIO

0K-100K	NONE
101K-150K	93.2%
151K-200K	96.7%
201K-300K	96.2%
301K-500K	96.1%
501K-750K	97.3%
751K+	NONE

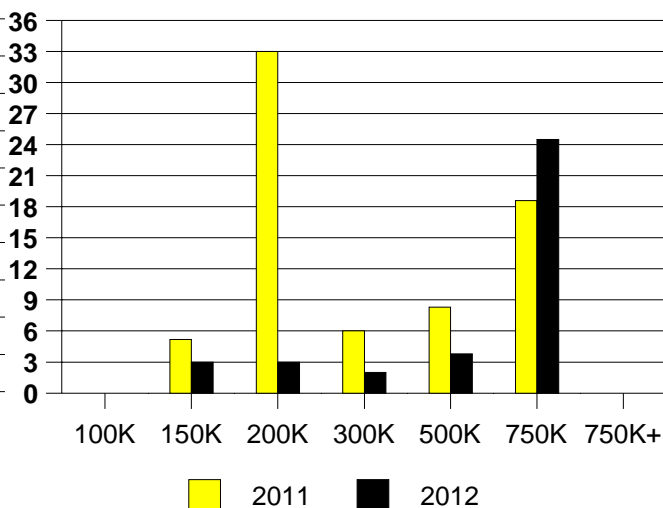
AVERAGE OVERPRICING

Original List Price to Sale Price	
2011	10.8%
2012	7.2%

PROSPER MONTHLY SALES



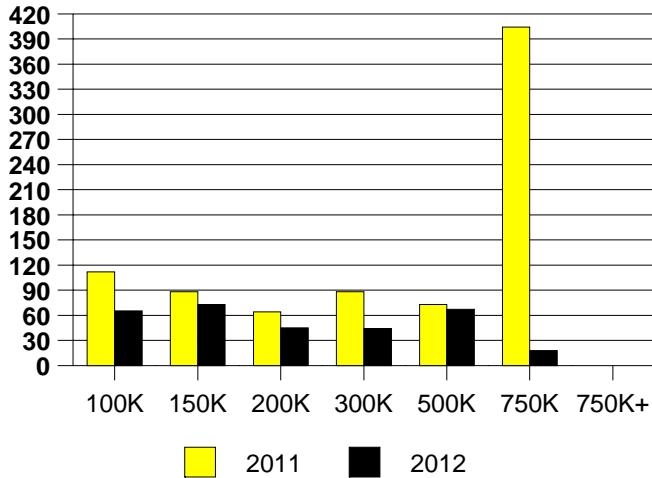
Inventory not shown where no sales
PROSPER MONTHS OF INVENTORY



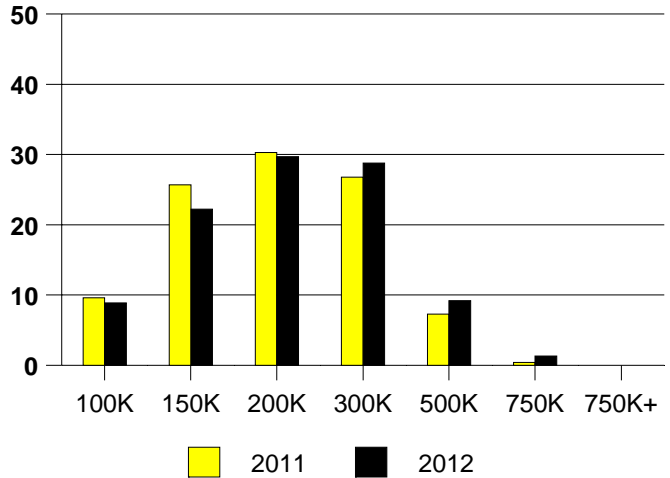
NTREIS Sold informaton as of 07/03/2012

	<u>2011</u>	<u>2012</u>
Total Sold Volume	\$ 49,402,552	\$ 62,284,344
Number of Sales	261	316
Median Sale Price	\$ 171,000	\$ 179,200

DAYS ON MARKET(RICHARDSON)



RICHARDSON MKT SHARE BY PRICE RANGE



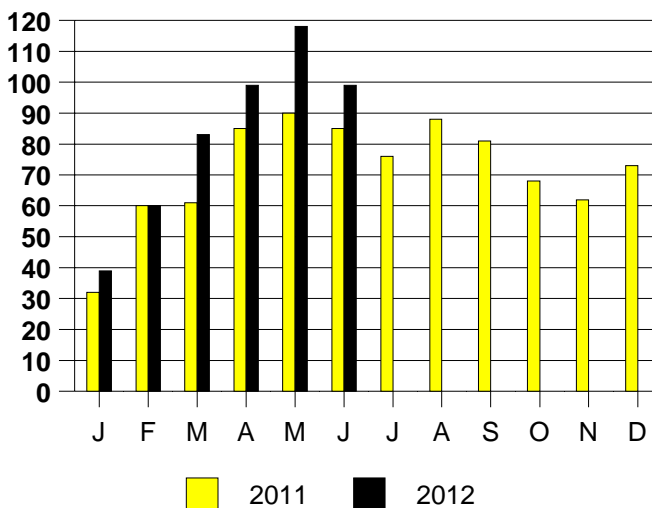
SALE/LIST PRICE RATIO

0K-100K	92.8%
101K-150K	96.0%
151K-200K	97.7%
201K-300K	97.7%
301K-500K	96.9%
501K-750K	97.6%
751K+	NONE

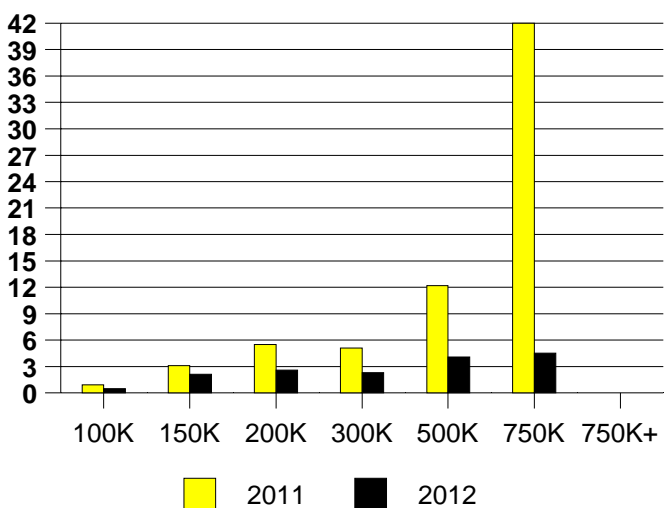
AVERAGE OVERPRICING
Original List Price to Sale Price

2011	8.4%
2012	6.3%

RICHARDSON MONTHLY SALES



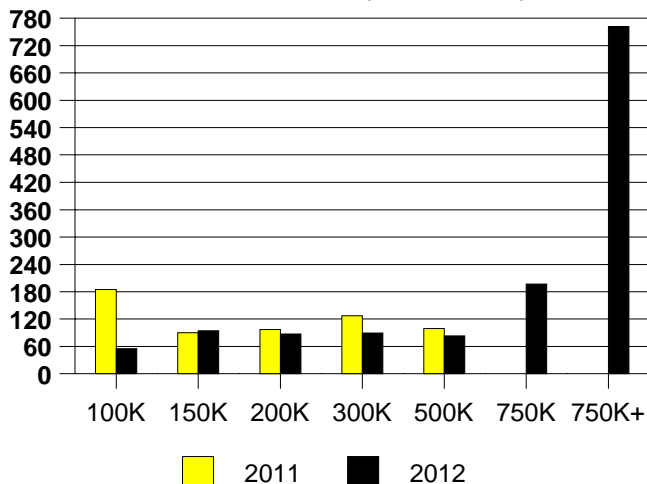
RICHARDSON MONTHS OF INVENTORY



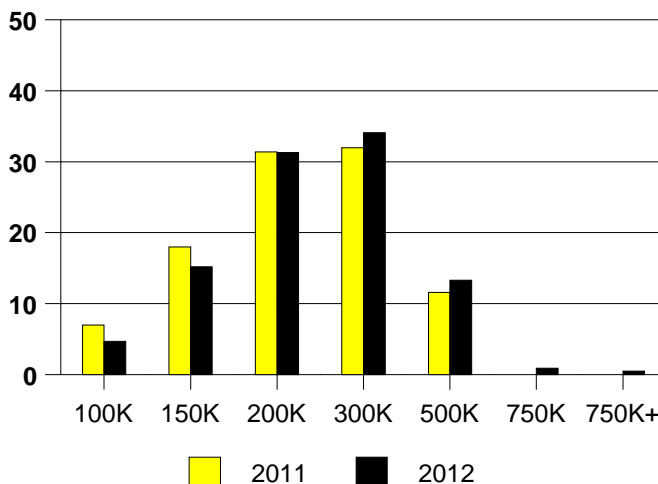
NTREIS Sold informaton as of 07/03/2012

	<u>2011</u>	<u>2012</u>
Total Sold Volume	\$ 35,192,660	\$ 46,227,616
Number of Sales	172	211
Median Sale Price	\$ 183,700	\$ 198,000

DAYS ON THE MARKET (ROCKWALL)



ROCKWALL MKT SHARE BY PRICE RANGE



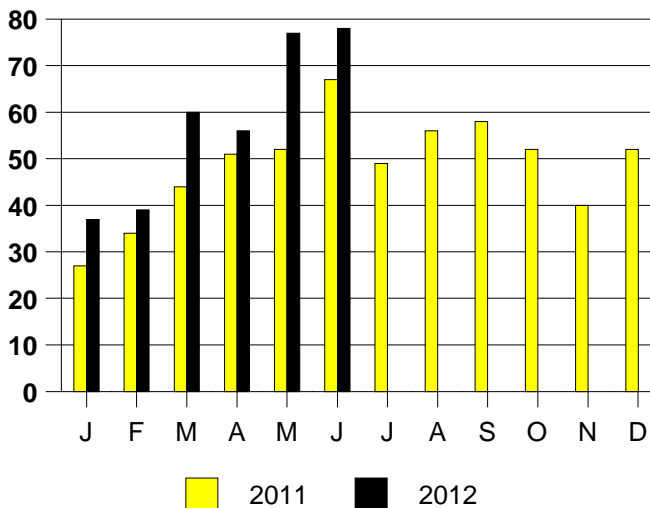
SALE/LIST PRICE RATIO

0K-100K	91.7%
101K-150K	98.0%
151K-200K	97.1%
201K-300K	96.1%
301K-500K	96.2%
501K-750K	94.2%
751K+	90.2%

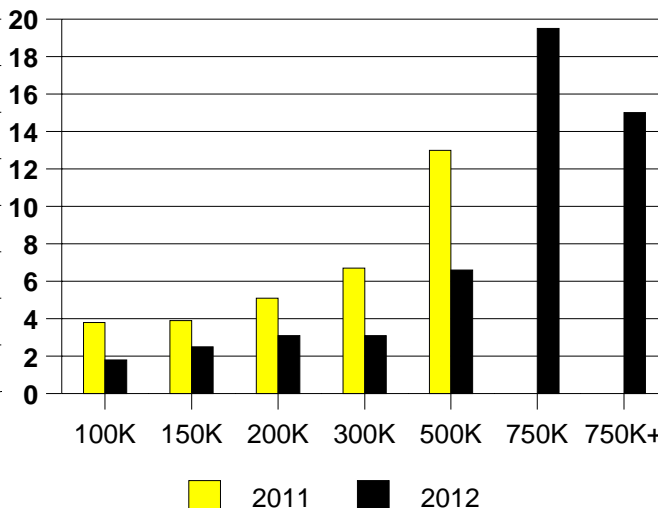
AVERAGE OVERPRICING
Original List Price to Sale Price

2011	7.4%
2012	7.4%

ROCKWALL MONTHLY SALES



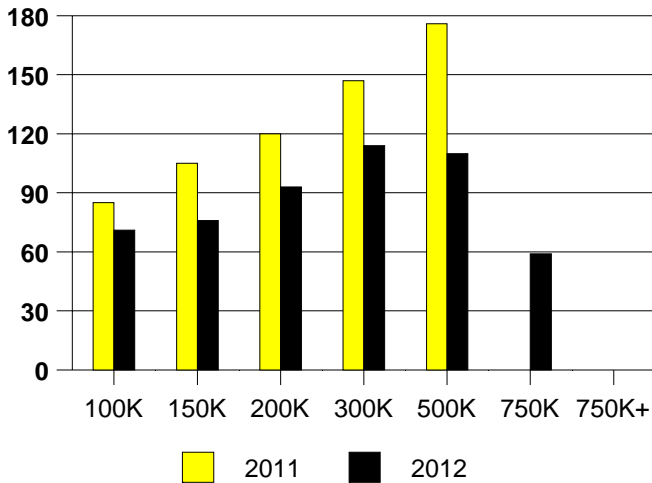
Inventory not shown where no sales
ROCKWALL MONTHS OF INVENTORY



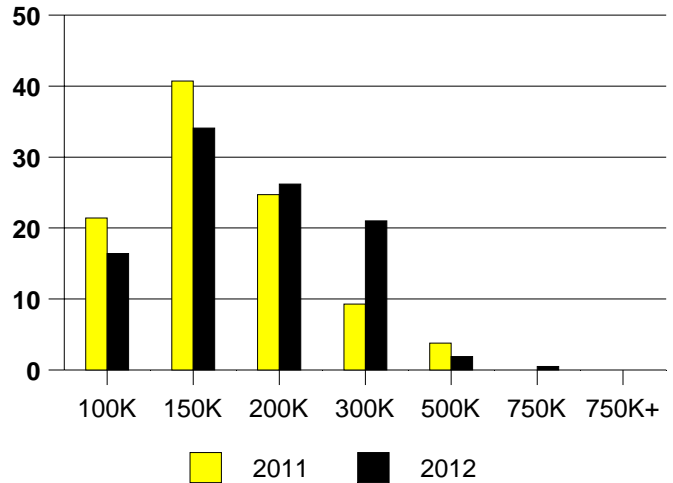
NTREIS Sold informaton as of 07/03/2012

	<u>2011</u>	<u>2012</u>
Total Sold Volume	\$ 26,602,000	\$ 34,053,812
Number of Sales	182	214
Median Sale Price	\$ 135,250	\$ 150,000

DAYS ON THE MARKET (ROWLETT)



ROWLETT MKT SHARE BY PRICE RANGE



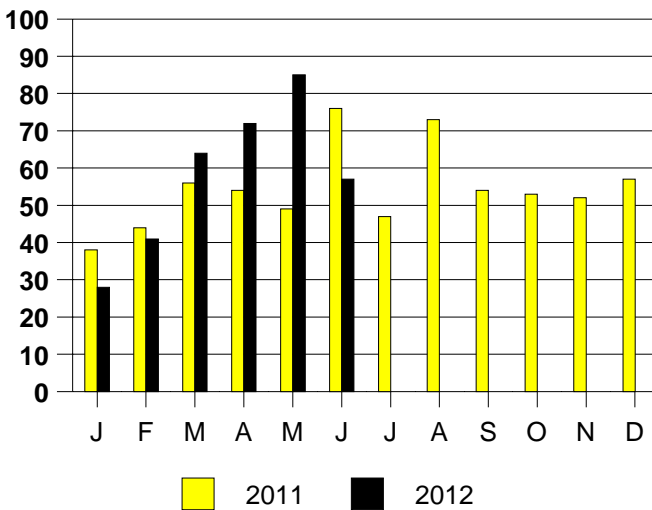
SALE/LIST PRICE RATIO

0K-100K	95.5%
101K-150K	97.2%
151K-200K	97.9%
201K-300K	97.3%
301K-500K	97.2%
501K-750K	95.2%
751K+	NONE

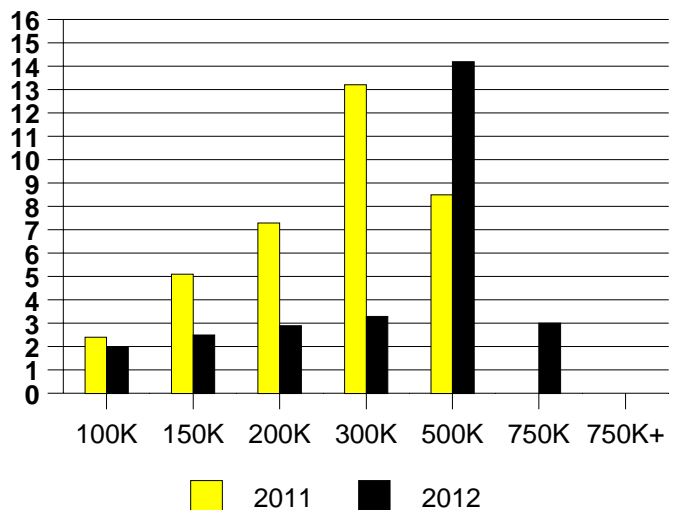
AVERAGE OVERPRICING
Original List Price to Sale Price

2011	9.3%
2012	6.2%

ROWLETT MONTHLY SALES

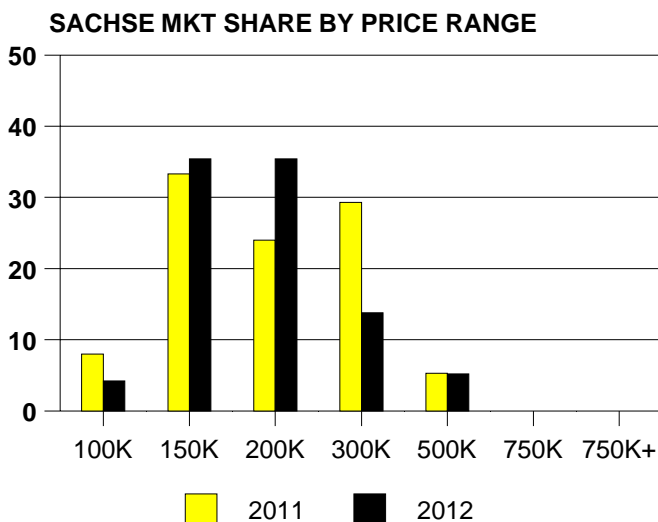
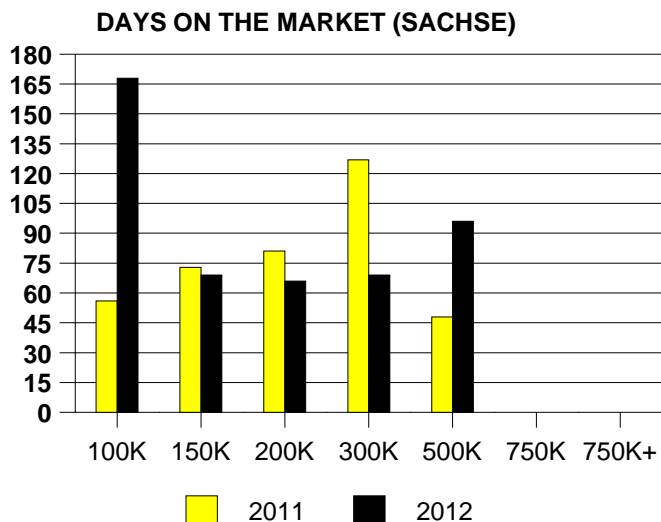


Inventory not shown where no sales
ROWLETT MONTHS OF INVENTORY



NTREIS Sold informaton as of 07/03/2012

	<u>2011</u>	<u>2012</u>
Total Sold Volume	\$ 13,581,068	\$ 16,828,688
Number of Sales	75	96
Median Sale Price	\$ 155,900	\$ 162,700



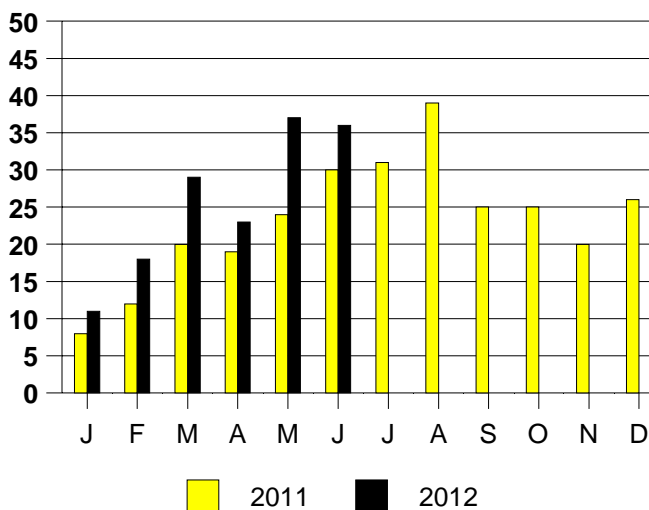
SALE/LIST PRICE RATIO

0K-100K	91.2%
101K-150K	98.1%
151K-200K	98.3%
201K-300K	98.3%
301K-500K	97.9%
501K-750K	NONE
751K+	NONE

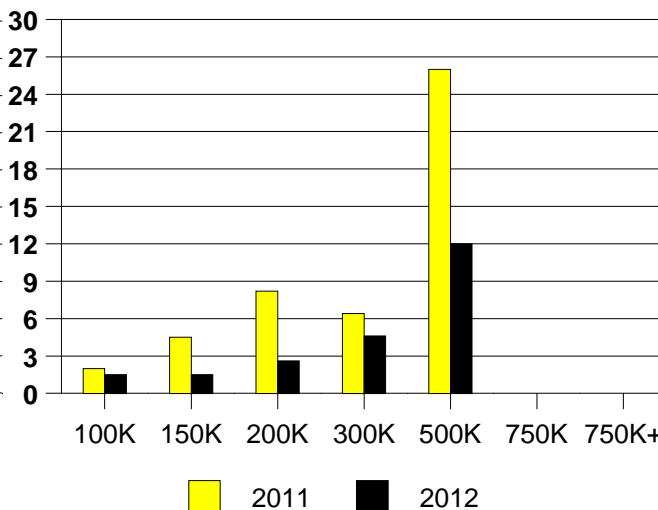
AVERAGE OVERPRICING
Original List Price to Sale Price

2011	10.0%
2012	6.0%

SACHSE MONTHLY SALES



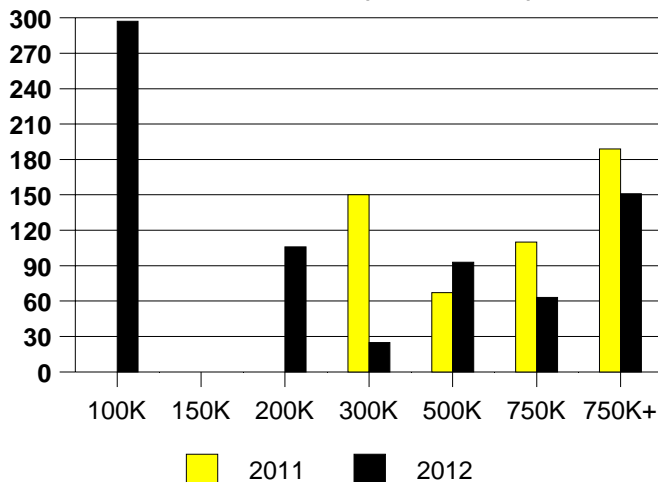
Inventory not shown where no sales
SACHSE MONTHS OF INVENTORY



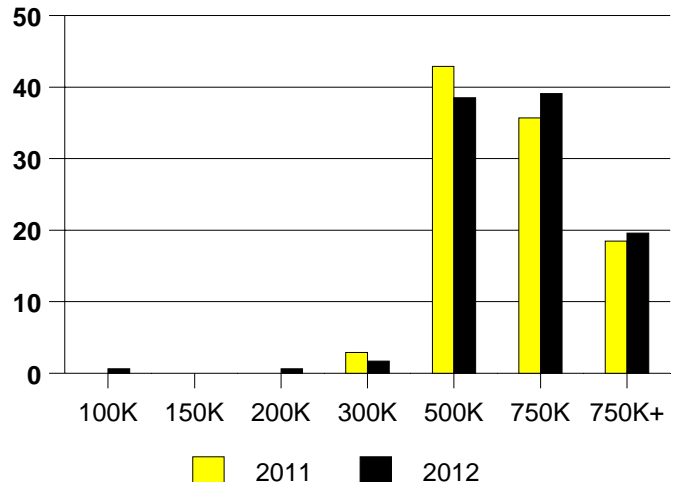
NTREIS Sold informaton as of 07/03/2012

	<u>2011</u>	<u>2012</u>
Total Sold Volume	\$ 85,206,032	\$ 107,847,461
Number of Sales	140	179
Median Sale Price	\$ 521,250	\$ 545,000

DAYS ON THE MARKET (SOUTHLAKE)



SOUTHLAKE MKT SHARE BY PRICE RANGE



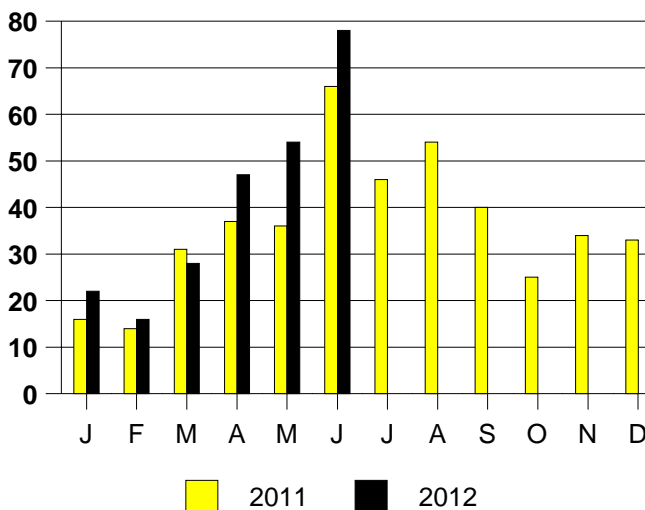
SALE/LIST PRICE RATIO

0K-100K	98.7%
101K-150K	NONE
151K-200K	93.6%
201K-300K	99.0%
301K-500K	97.5%
501K-750K	97.3%
751K+	94.8%

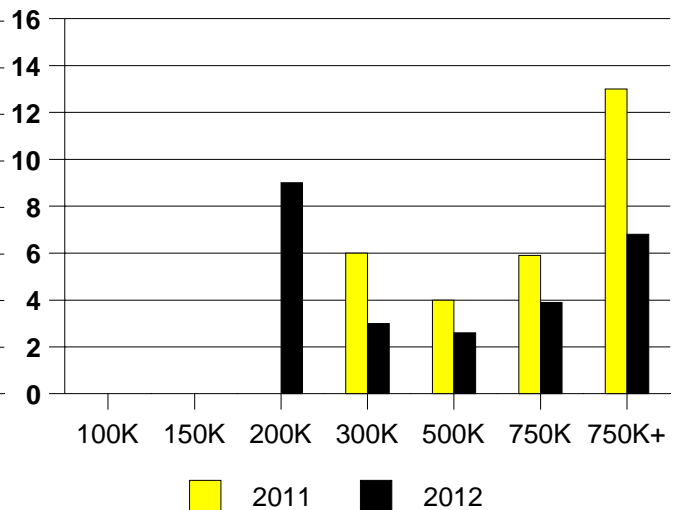
AVERAGE OVERPRICING
Original List Price to Sale Price

2011	6.8%
2012	5.9%

SOUTHLAKE MONTHLY SALES



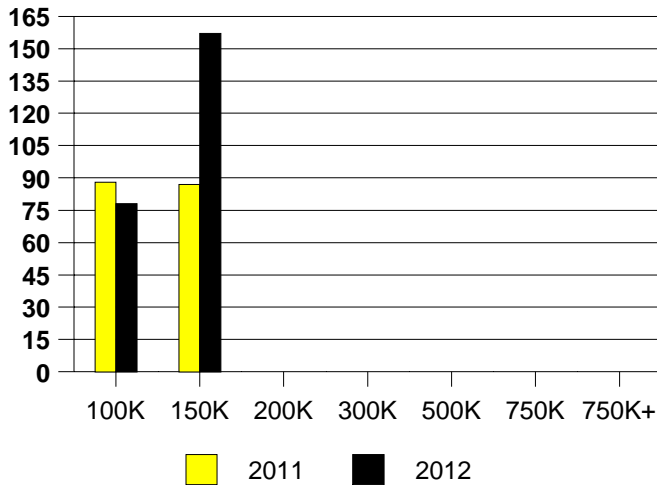
SOUTHSLAKE MONTHS OF INVENTORY
Inventory not shown where no sales



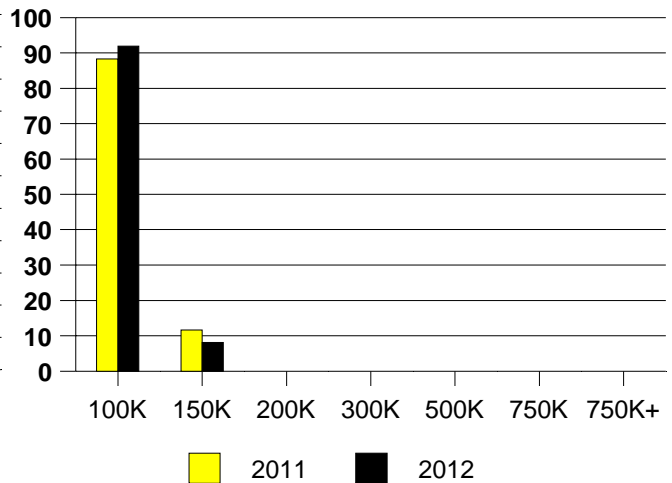
NTREIS Sold informaton as of 07/03/2012

	<u>2011</u>	<u>2012</u>
Total Sold Volume	\$6,924,080	\$ 5,637,368
Number of Sales	111	86
Median Sale Price	\$ 60,000	\$ 63,899

DAYS ON THE MARKET (OAK CLIFF)



OAK CLIFF MKT SHARE BY PRICE RANGE



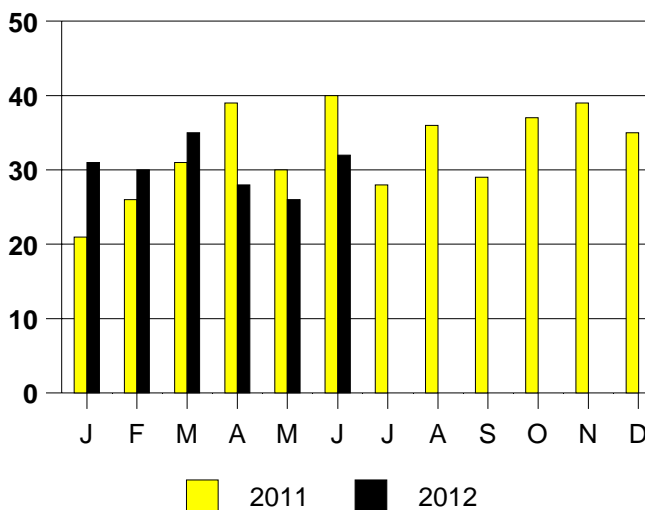
SALE/LIST PRICE RATIO

0K-100K	99.2%
101K-150K	95.3%
151K-200K	NONE
201K-300K	NONE
301K-500K	NONE
501K-750K	NONE
751K+	NONE

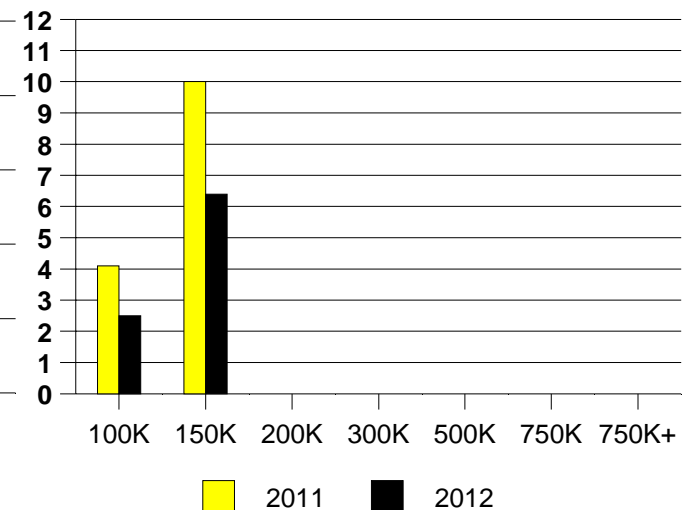
AVERAGE OVERPRICING
Original List Price to Sale Price

2011	9.4%
2012	7.9%

OAK CLIFF MONTHLY SALES



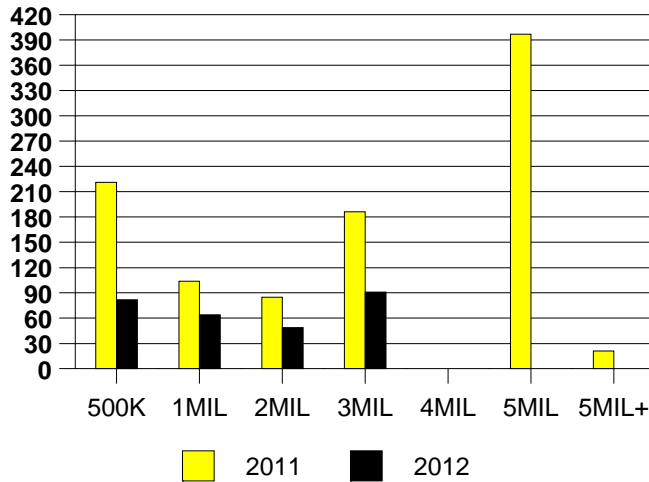
Inventory not shown where no sales
OAK CLIFF MONTHS OF INVENTORY



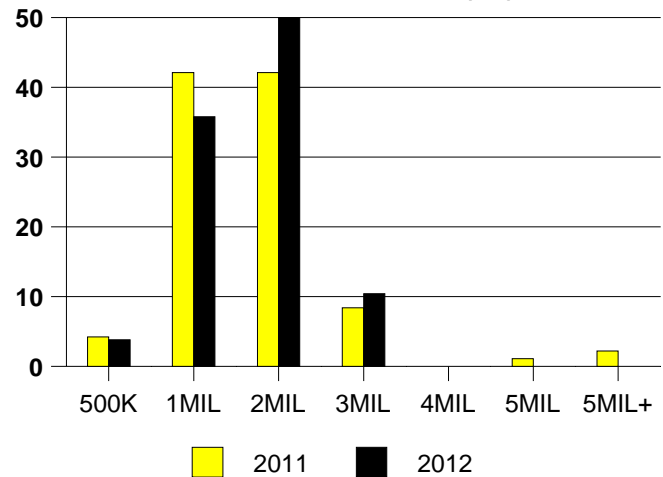
NTREIS Sold informaton as of 07/03/2012

	2011	2012
Total Sold Volume	\$ 121,592,897	\$ 129,316,208
Number of Sales	95	106
Median Sale Price	\$ 1,060,000	\$ 1,135,000

DAYS ON THE MARKET (UNIV PARK)



MKT SHARE BY PRICE RANGE(UP)



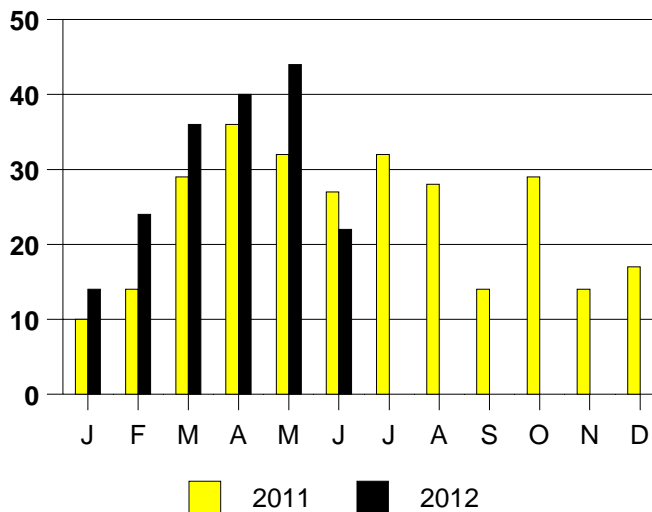
SALE/LIST PRICE RATIO

0K-500K	95.9%
501K-1MIL	97.2%
1MIL-2MIL	97.0%
2MIL-3MIL	96.6%
3MIL-4MIL	NONE
4MIL-5MIL	NONE
5MIL+	NONE

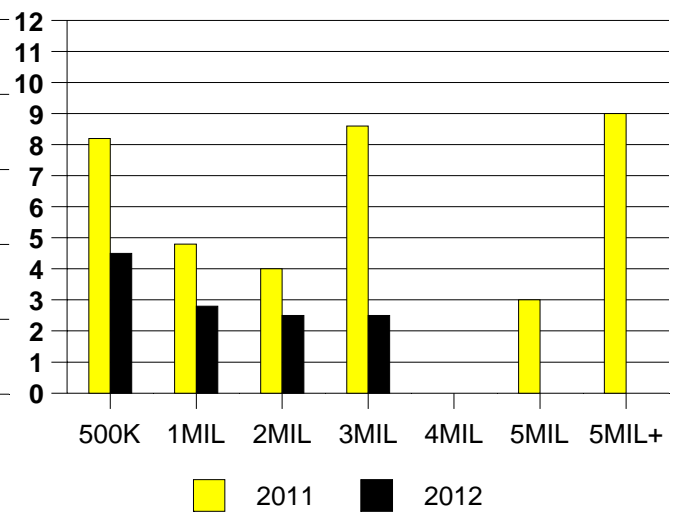
AVERAGE OVERPRICING

Orig List Price to Sale Price	
2011	10.1%
2012	4.9%

UNIVERSITY PARK MONTHLY SALES



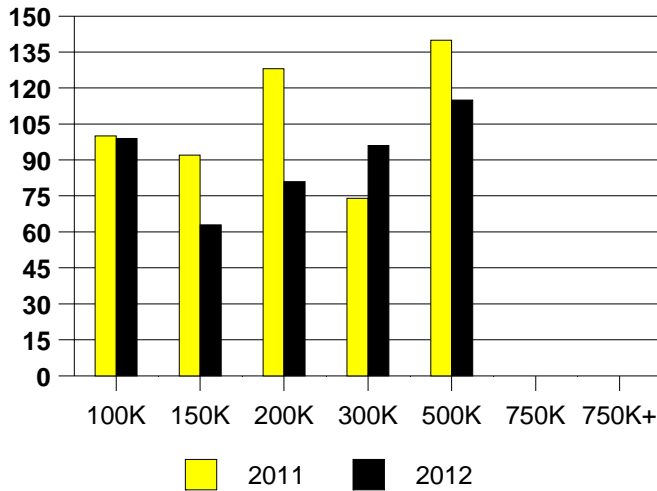
Inventory not shown where no sales
UNIV PARK MONTHS OF INVENTORY



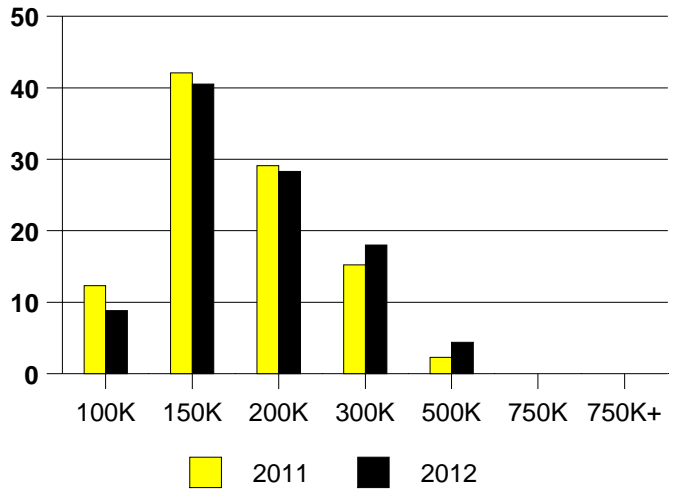
NTREIS Sold information as of 07/03/2012

	<u>2011</u>	<u>2012</u>
Total Sold Volume	\$ 26,635,683	\$ 34,268,708
Number of Sales	171	205
Median Sale Price	\$ 148,000	\$ 152,450

DAYS ON THE MARKET (WYLIE)



WYLIE MKT SHARE BY PRICE RANGE



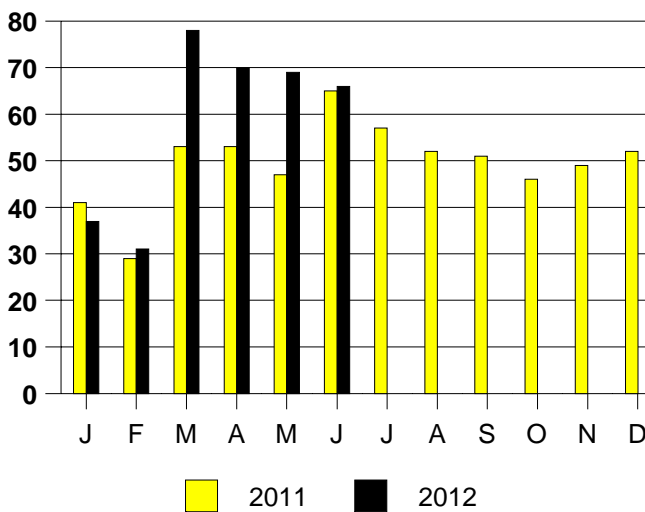
SALE/LIST PRICE RATIO

0K-100K	96.2%
101K-150K	99.0%
151K-200K	98.2%
201K-300K	98.0%
301K-500K	98.6%
501K-750K	NONE
751K+	NONE

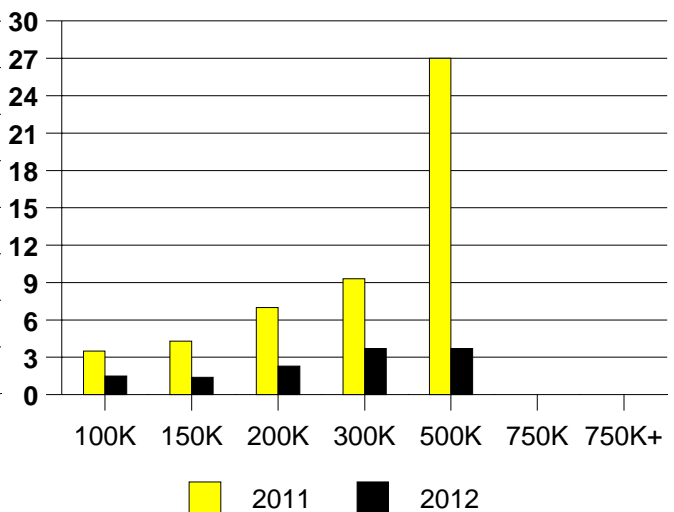
AVERAGE OVERPRICING
Original List Price to Sale Price

2011	8.5%
2012	5.2%

WYLIE MONTHLY SALES



Inventory not shown where no sales
WYLIE MONTHS OF INVENTORY



NTREIS Sold informaton as of 07/03/2012