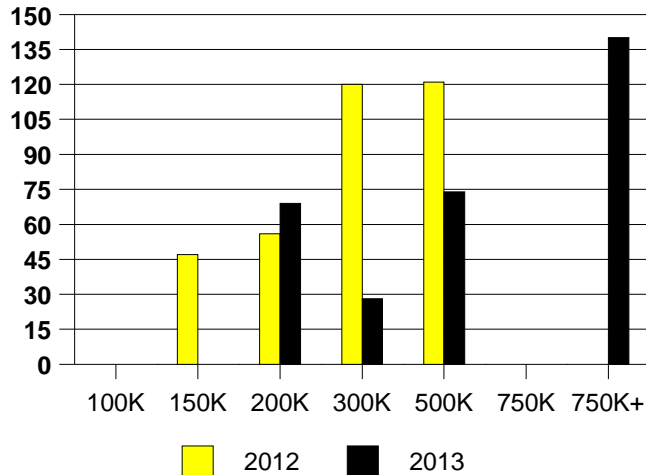
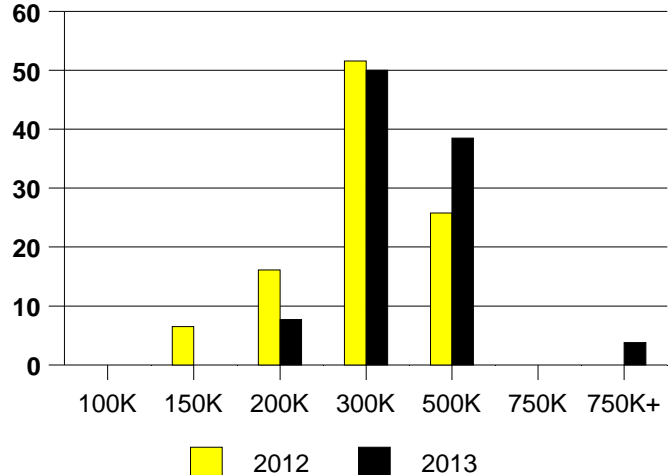


	<u>2012</u>	<u>2013</u>
Total Sold Volume	\$ 8,086,956	\$ 8,256,650
Number of Sales	31	26
Median Sale Price	\$ 260,000	\$ 295,290

DAYS ON THE MARKET (ADDISON)



ADDISON MKT SHARE BY PRICE RANGE



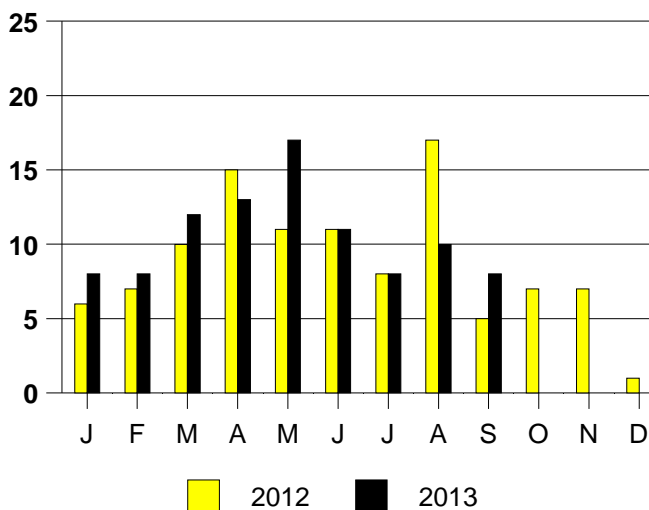
SALE/LIST PRICE RATIO

0K-100K	NONE
101K-150K	NONE
151K-200K	96.4%
201K-300K	97.8%
301K-500K	96.2%
501K-750K	NONE
751K+	95.5%

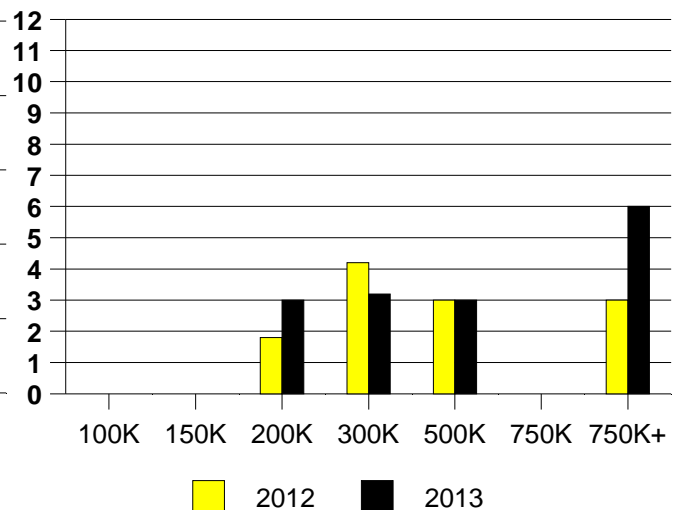
AVERAGE OVERPRICING
Original List Price to Sale Price

2012	5.3%
2013	5.3%

ADDISON MONTHLY SALES



Inventory not shown where no sales
ADDISON MONTHS OF INVENTORY

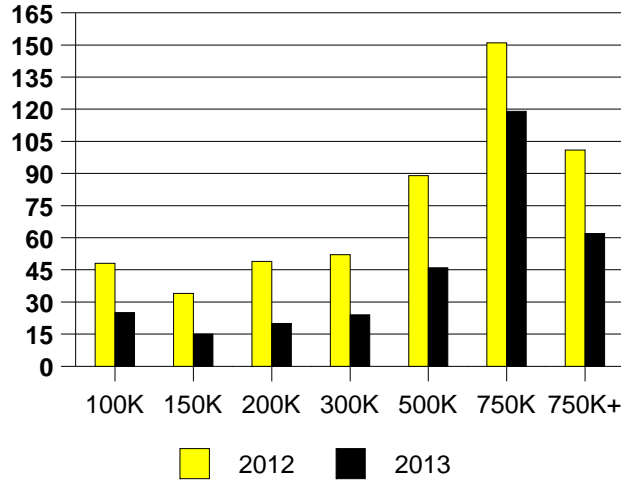


NTREIS Sold informaton as of 10/08/2013

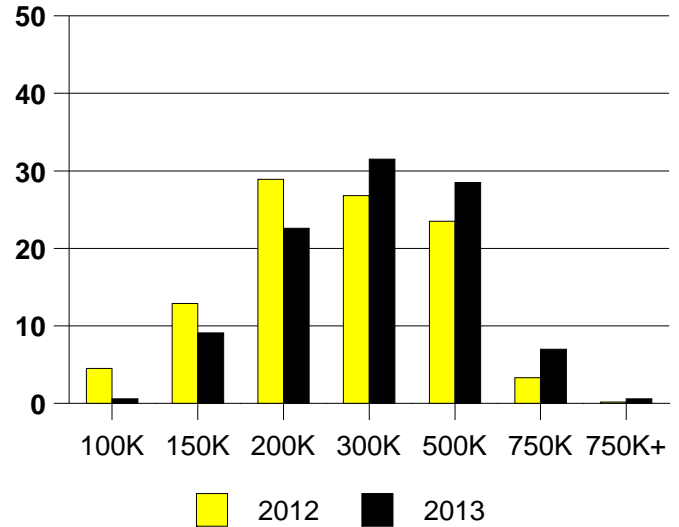
CHICAGO TITLE

	<u>2012</u>	<u>2013</u>
Total Sold Volume	\$104,185,124	\$ 134,034,005
Number of Sales	426	413
Median Sale Price	\$ 210,000	\$ 250,000

DAYS ON THE MARKET (ALLEN)



ALLEN MKT SHARE BY PRICE RANGE



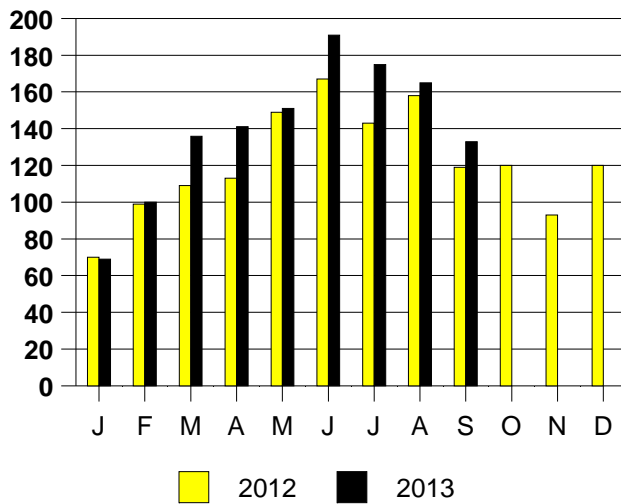
SALE/LIST PRICE RATIO

0K-100K	97.4%
101K-150K	99.9%
151K-200K	99.9%
201K-300K	99.4%
301K-500K	98.0%
501K-750K	97.2%
751K+	95.4%

AVERAGE OVERPRICING
Original List Price to Sale Price

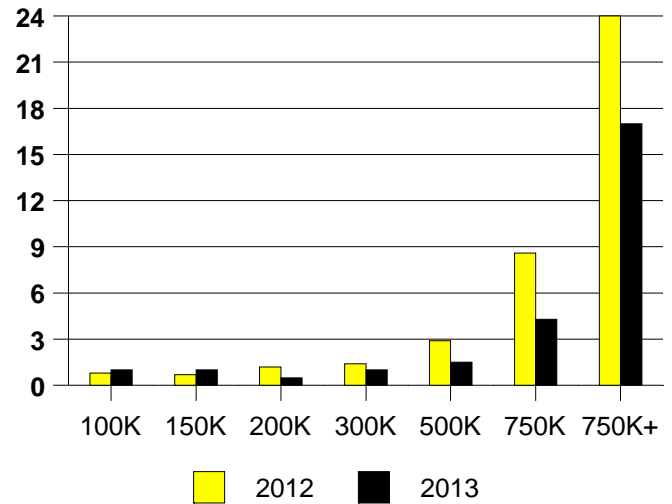
2012	4.5%
2013	2.0%

ALLEN MONTHLY SALES



Inventory not shown where no sales

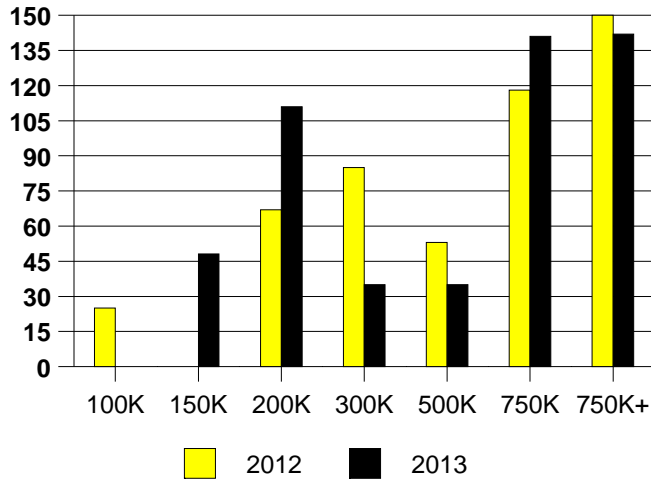
ALLEN MONTHS OF INVENTORY



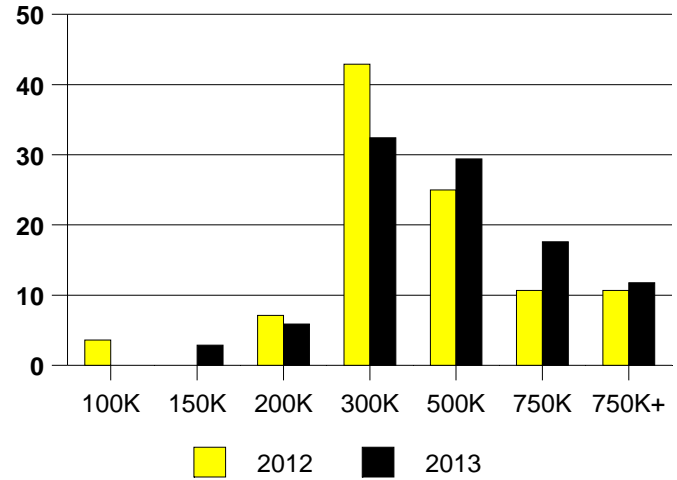
NTREIS Sold informaton as of 10/08/2013

	<u>2012</u>	<u>2013</u>
Total Sold Volume	\$ 12,415,133	\$ 14,485,353
Number of Sales	28	34
Median Sale Price	\$ 299,000	\$ 323,202

DAYS ON THE MARKET (ARGYLE)



ARGYLE MKT SHARE BY PRICE RANGE



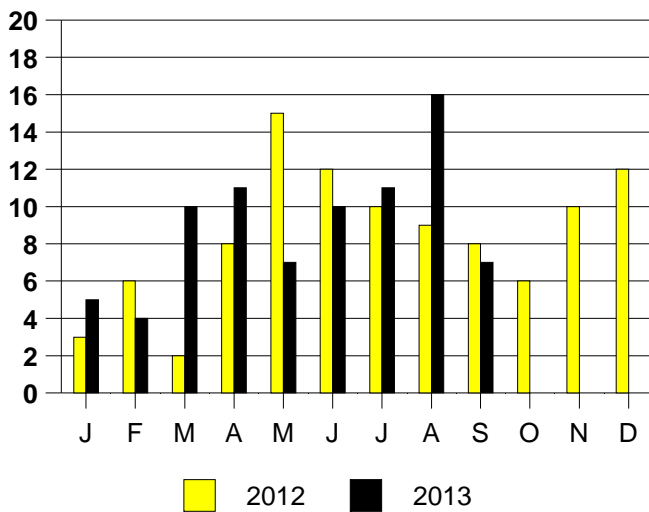
SALE/LIST PRICE RATIO

0K-100K	NONE
101K-150K	101.7%
151K-200K	91.7%
201K-300K	98.4%
301K-500K	96.9%
501K-750K	97.5%
751K+	89.9%

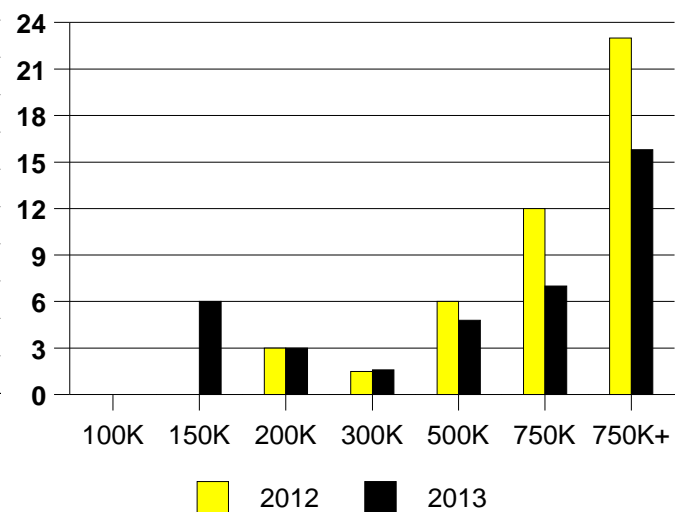
AVERAGE OVERPRICING
Original List Price to Sale Price

2012	8.7%
2013	6.2%

ARGYLE MONTHLY SALES

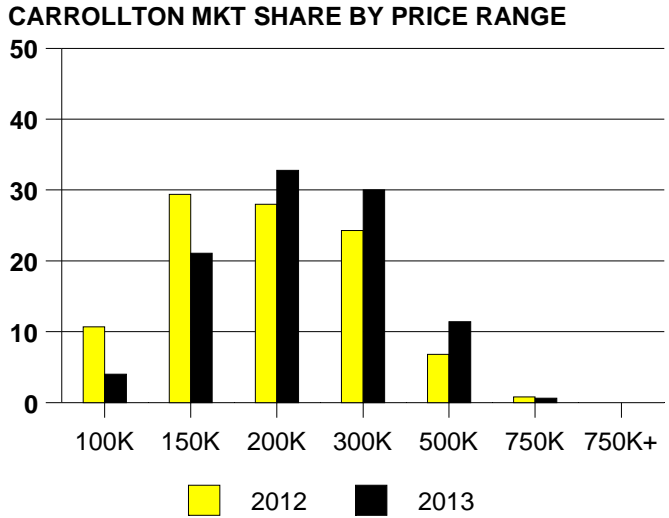
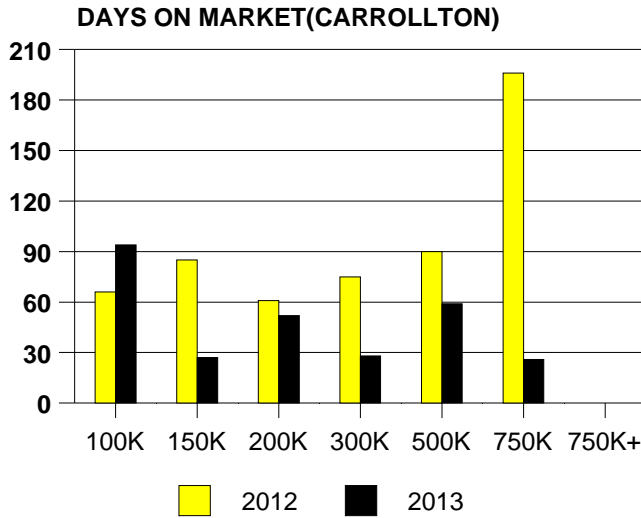


Inventory not shown where no sales
ARGYLE MONTHS OF INVENTORY



NTREIS Sold informaton as of 10/08/2013

	<u>2012</u>	<u>2013</u>
Total Sold Volume	\$ 65,219,808	\$ 97,735,621
Number of Sales	354	473
Median Sale Price	\$ 168,000	\$ 189,000



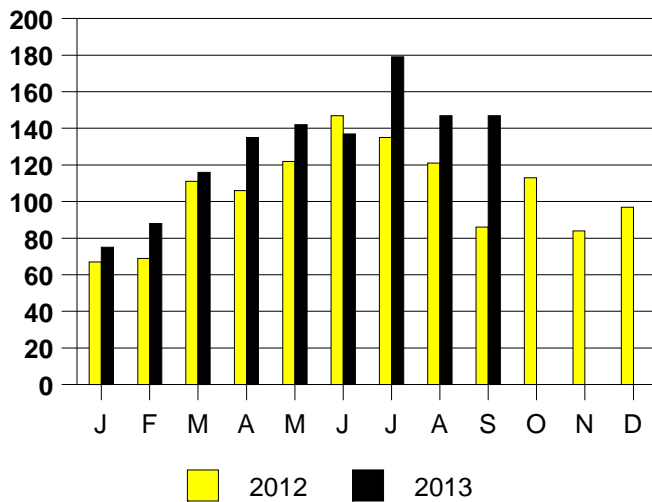
SALE/LIST PRICE RATIO

0K-100K	93.8%
101K-150K	98.9%
151K-200K	98.7%
201K-300K	98.8%
301K-500K	98.0%
501K-750K	96.2%
751K+	NONE

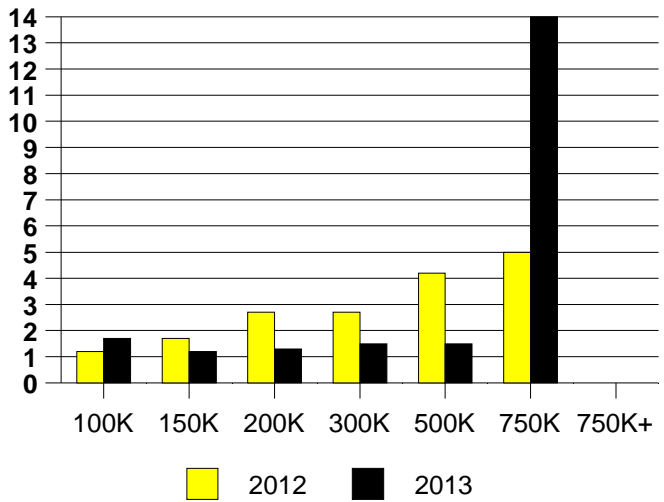
AVERAGE OVERPRICING
Original List Price to Sale Price

2012	5.5%
2013	3.3%

CARROLLTON MONTHLY SALES

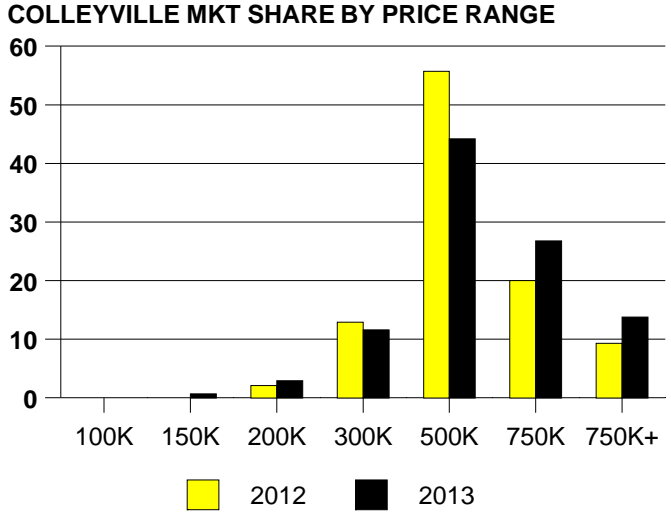
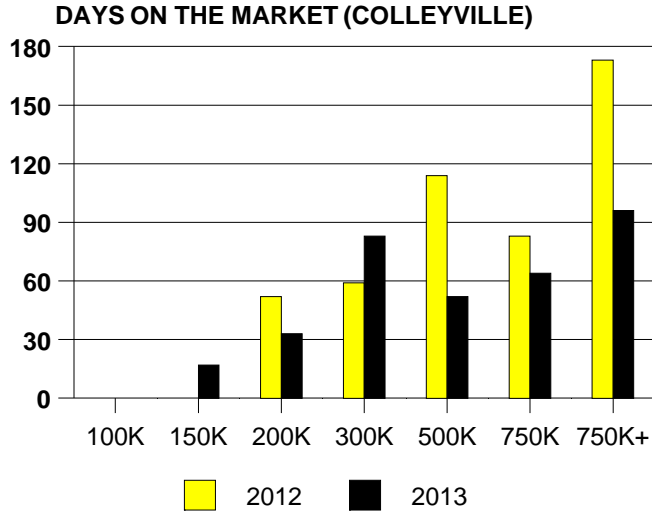


CARROLLTON MONTHS OF INVENTORY



NTREIS Sold informaton as of 10/08/2013

	<u>2012</u>	<u>2013</u>
Total Sold Volume	\$ 67,236,830	\$ 74,168,162
Number of Sales	140	138
Median Sale Price	\$ 419,500	\$ 476,857



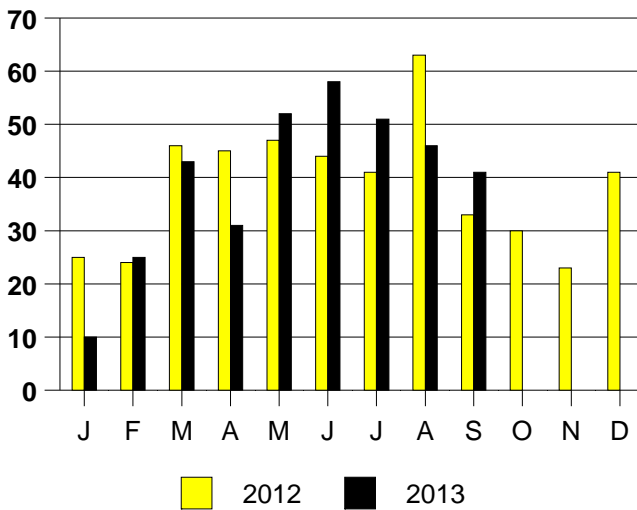
SALE/LIST PRICE RATIO

0K-100K	NONE
101K-150K	97.2%
151K-200K	115.0%
201K-300K	98.6%
301K-500K	97.4%
501K-750K	97.1%
751K+	96.2%

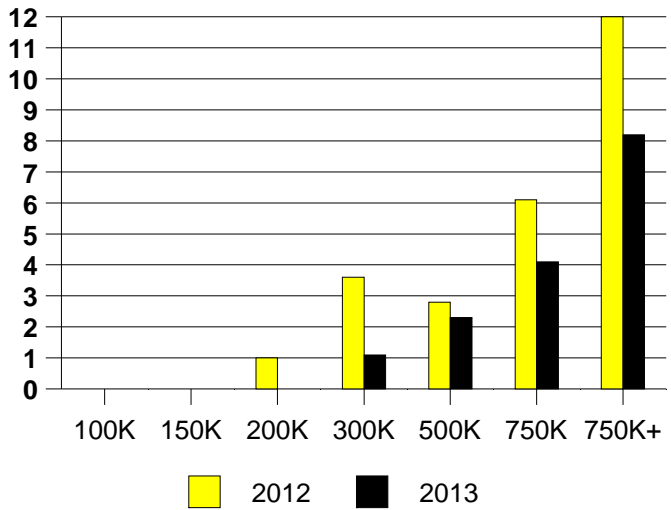
AVERAGE OVERPRICING
Original List Price to Sale Price

2012	7.9%
2013	4.4%

COLLEYVILLE MONTHLY SALES



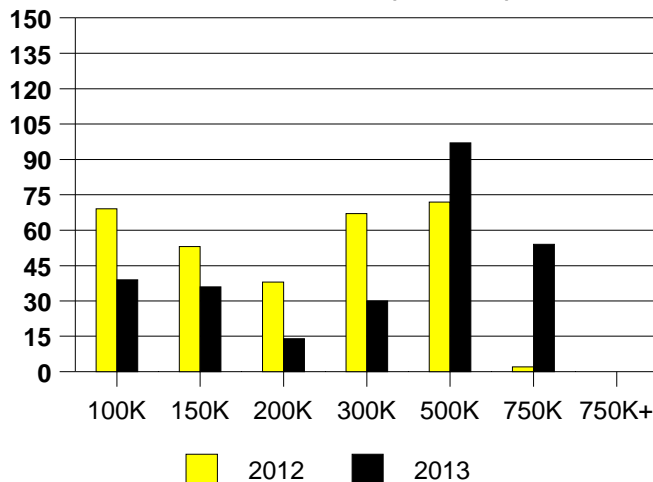
Inventory not shown where no sales
COLLEYVILLE MONTHS OF INVENTORY



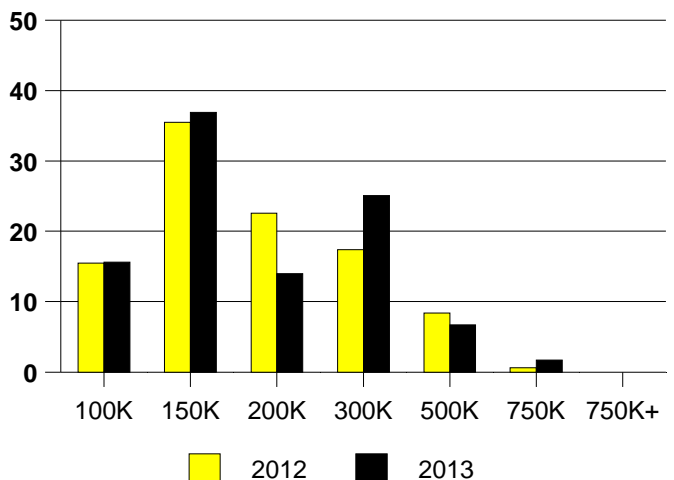
NTREIS Sold informaton as of 10/08/2013

	<u>2012</u>	<u>2013</u>
Total Sold Volume	\$ 26,850,821	\$ 31,938,390
Number of Sales	155	179
Median Sale Price	\$ 148,000	\$ 147,000

DAYS ON THE MARKET (COLONY)



COLONY MKT SHARE BY PRICE RANGE



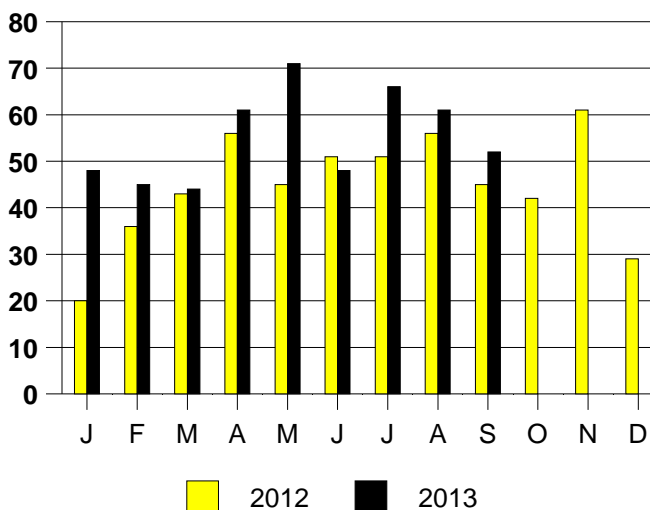
SALE/LIST PRICE RATIO

0K-100K	103.8%
101K-150K	98.8%
151K-200K	98.1%
201K-300K	98.5%
301K-500K	95.4%
501K-750K	99.1%
751K+	NONE

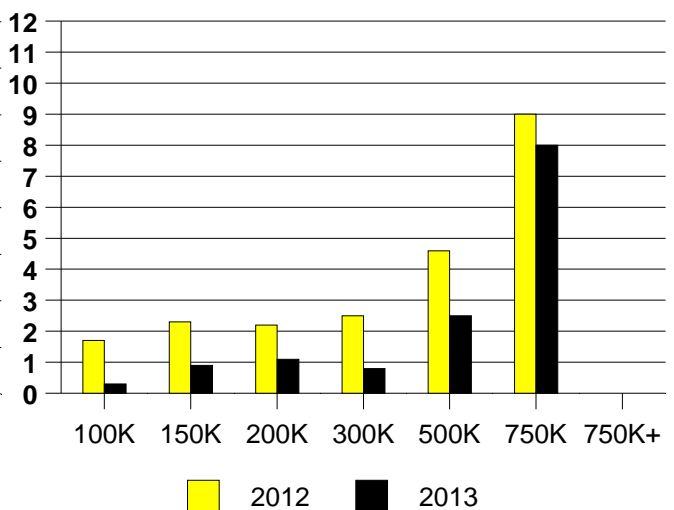
AVERAGE OVERPRICING
Original List Price to Sale Price

2012	4.2%
2013	1.7%

THE COLONY MONTHLY SALES



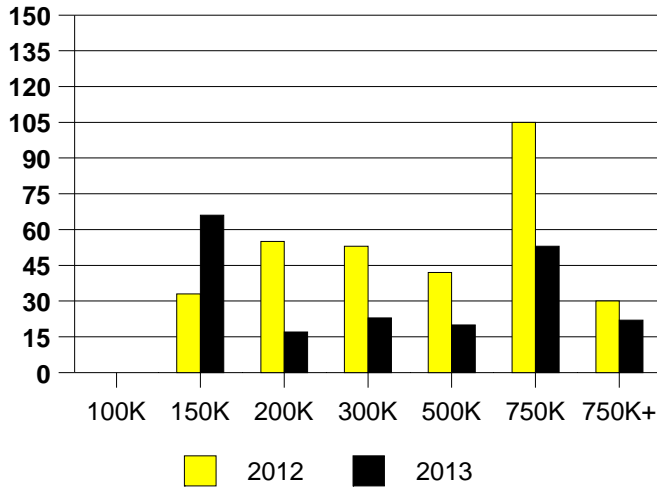
Inventory not shown where no sales
THE COLONY MONTHS OF INVENTORY



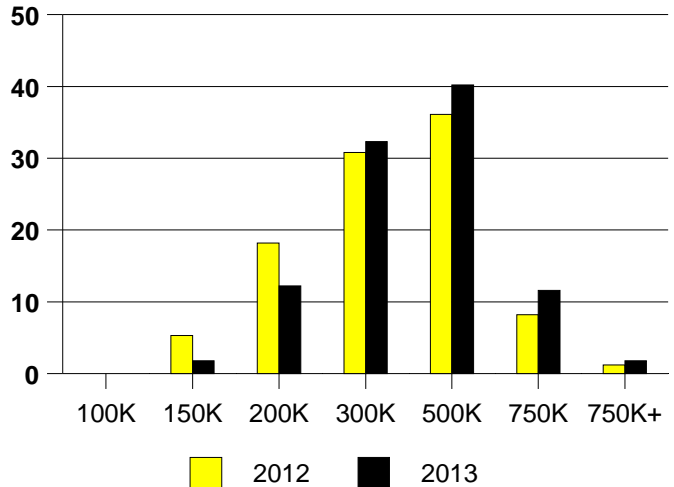
NTREIS Sold informaton as of 10/08/2013

	<u>2012</u>	<u>2013</u>
Total Sold Volume	\$ 52,508,707	\$ 56,590,640
Number of Sales	169	164
Median Sale Price	\$ 290,000	\$ 315,000

DAYS ON THE MARKET (COPPELL)



COPPELL MKT SHARE BY PRICE RANGE



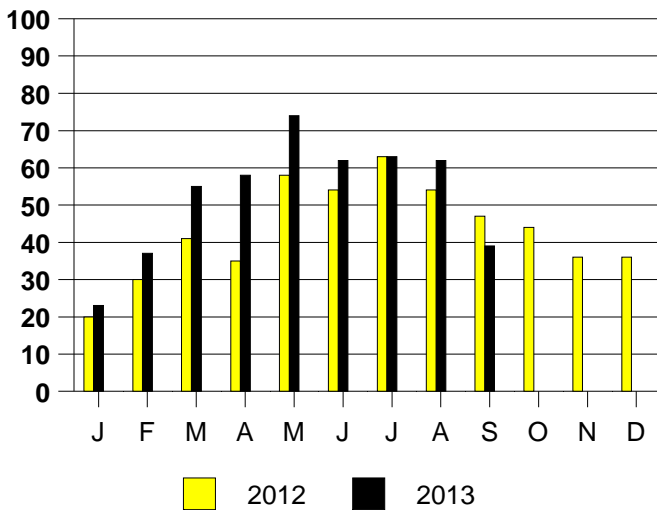
SALE/LIST PRICE RATIO

0K-100K	NONE
101K-150K	103.6%
151K-200K	98.0%
201K-300K	99.8%
301K-500K	99.2%
501K-750K	97.7%
751K+	97.2%

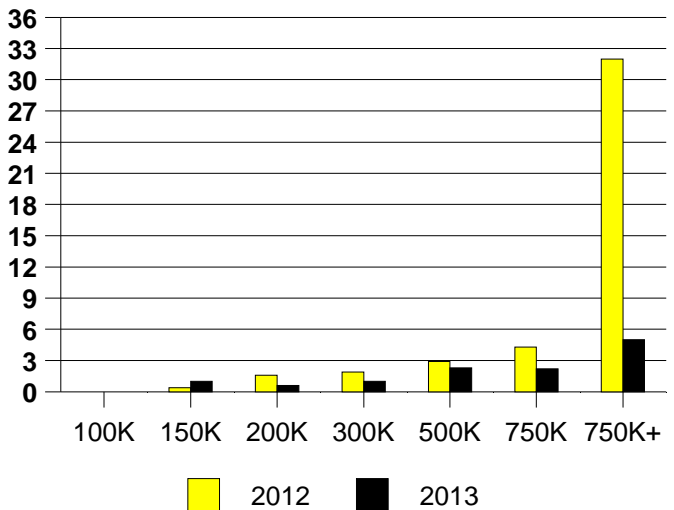
AVERAGE OVERPRICING
Original List Price to Sale Price

2012	4.4%
2013	1.5%

COPPELL MONTHLY SALES



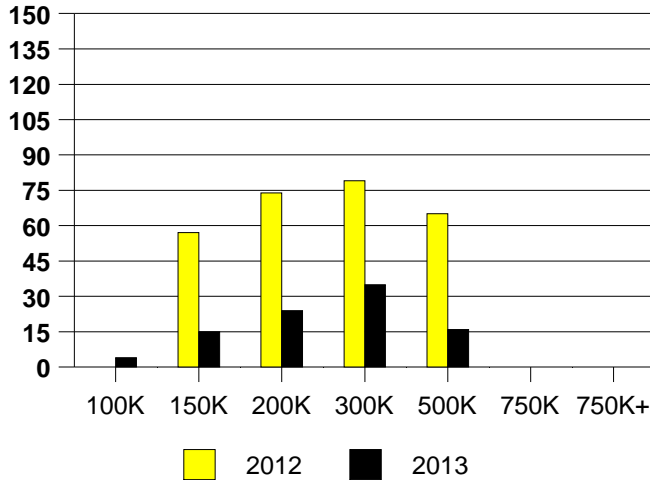
Inventory not shown where no sales
COPPELL MONTHS OF INVENTORY



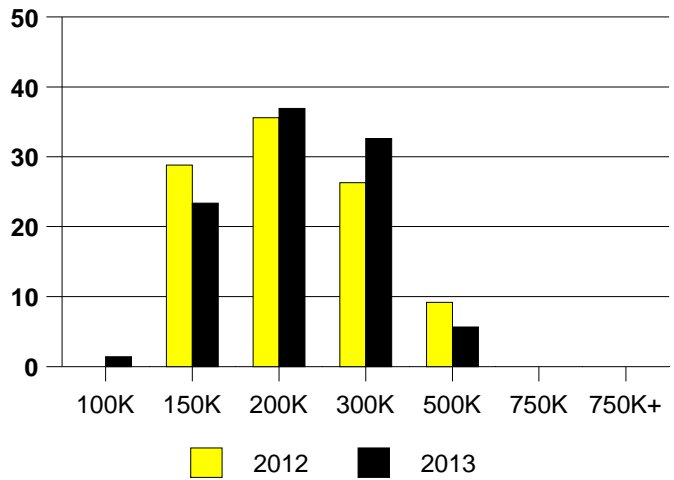
NTREIS Sold informaton as of 10/08/2013

	<u>2012</u>	<u>2013</u>
Total Sold Volume	\$ 23,198,359	\$ 28,077,439
Number of Sales	118	141
Median Sale Price	\$ 171,000	\$ 186,900

DAYS ON THE MARKET (CORINTH)



CORINTH MKT SHARE BY PRICE RANGE



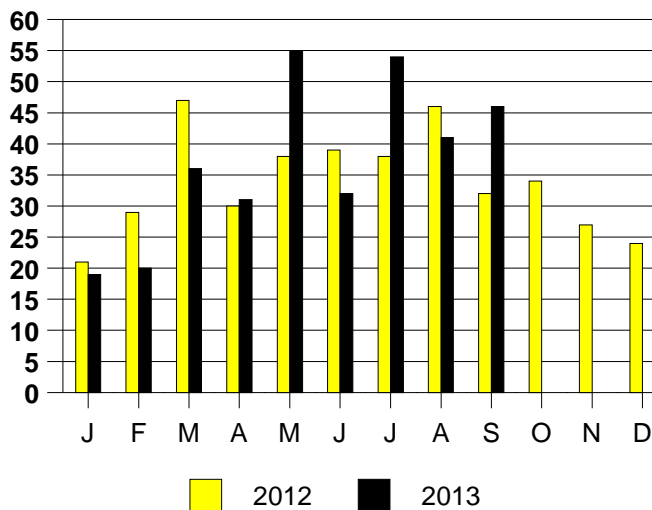
SALE/LIST PRICE RATIO

0K-100K	97.8%
101K-150K	98.3%
151K-200K	98.8%
201K-300K	98.6%
301K-500K	99.1%
501K-750K	NONE
751K+	NONE

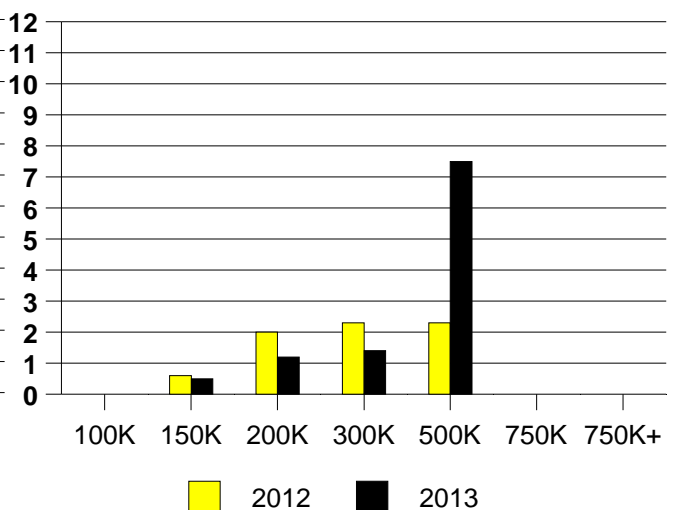
AVERAGE OVERPRICING
Original List Price to Sale Price

2012	4.0%
2013	2.5%

CORINTH MONTHLY SALES



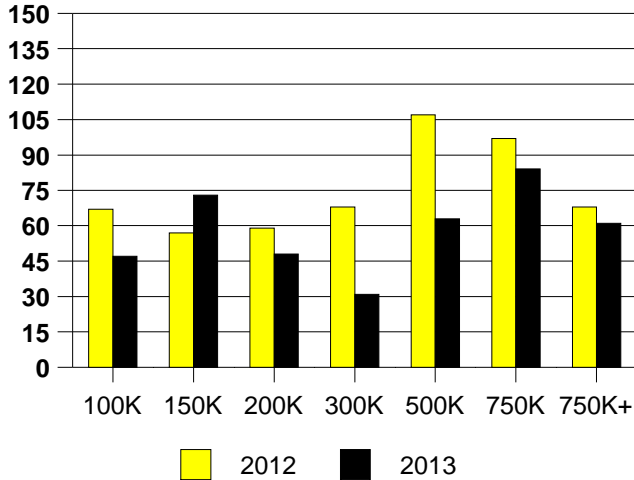
Inventory not shown where no sales
CORINTH MONTHS OF INVENTORY



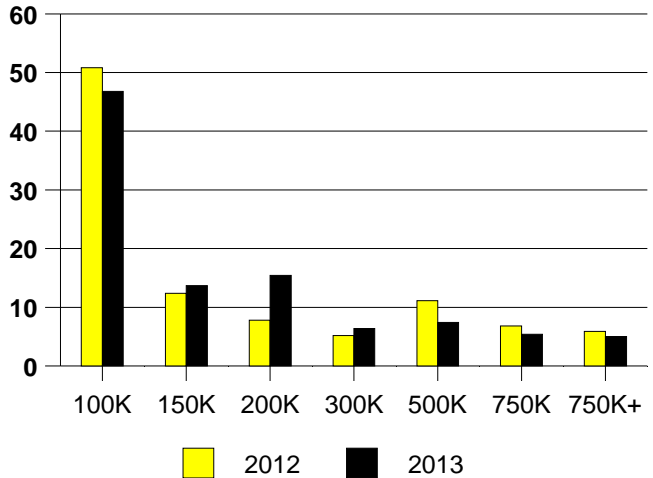
NTREIS Sold informaton as of 10/08/2013

	<u>2012</u>	<u>2013</u>
Total Sold Volume	\$ 69,106,962	\$ 69,914,030
Number of Sales	307	299
Median Sale Price	\$ 97,000	\$ 114,000

DAYS ON THE MARKET (DALLAS)



DALLAS MKT SHARE BY PRICE RANGE



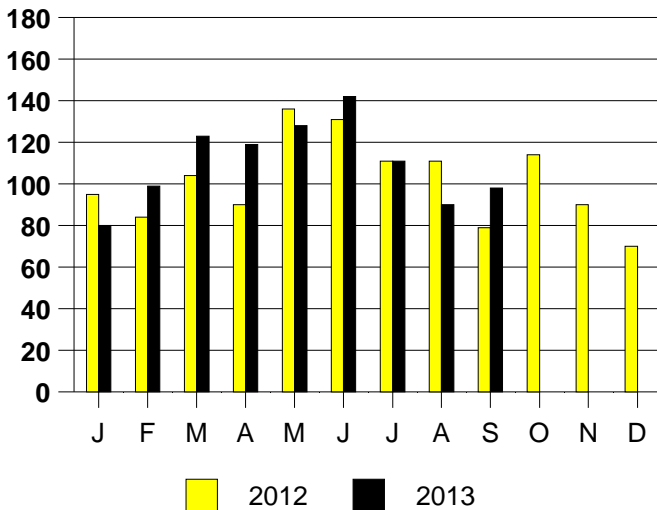
SALE/LIST PRICE RATIO

0K-100K	99.2%
101K-150K	98.6%
151K-200K	99.0%
201K-300K	97.2%
301K-500K	96.5%
501K-750K	96.1%
751K+	96.8%

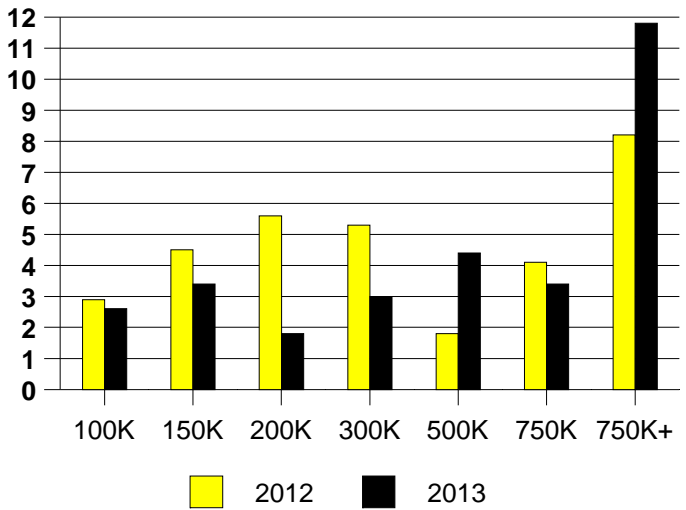
AVERAGE OVERPRICING
Original List Price to Sale Price

2012	10.1%
2013	4.3%

DALLAS MONTHLY SALES



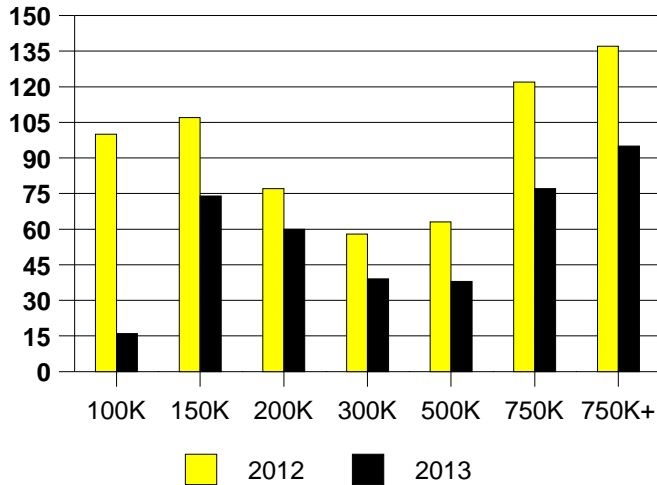
Inventory not shown where no sales
DALLAS MONTHS OF INVENTORY



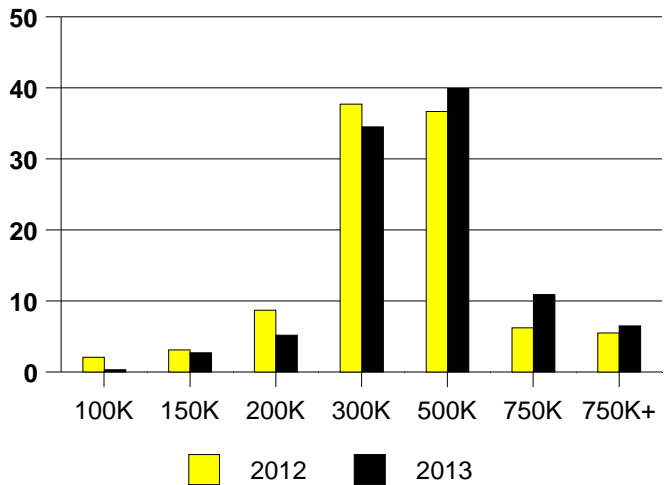
NTREIS Sold informaton as of 10/08/2013

	<u>2012</u>	<u>2013</u>
Total Sold Volume	\$ 106,705,2250	\$ 141,721,648
Number of Sales	289	368
Median Sale Price	\$ 295,000	\$ 327,000

DAYS ON THE MARKET (AREA 10)



AREA 10 MKT SHARE BY PRICE RANGE



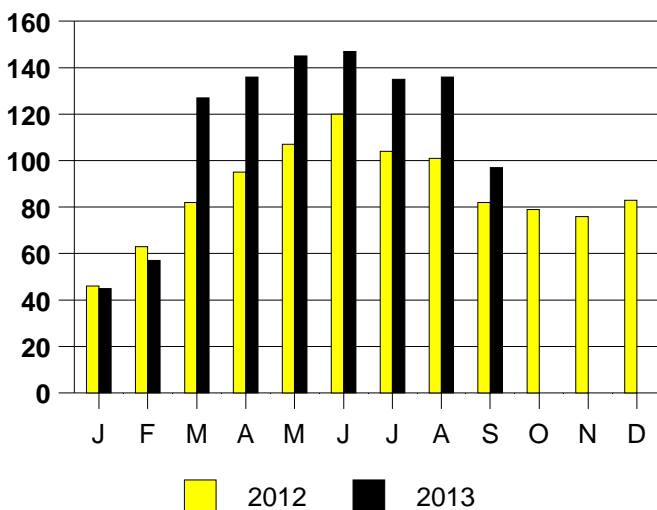
SALE/LIST PRICE RATIO

0K-100K	96.5%
101K-150K	98.1%
151K-200K	96.3%
201K-300K	97.8%
301K-500K	97.9%
501K-750K	96.6%
751K+	92.5%

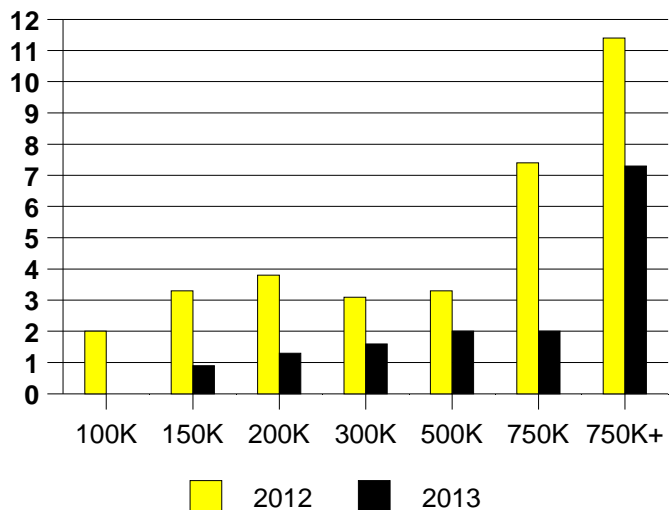
AVERAGE OVERPRICING
Original List Price to Sale Price

2012	5.7%
2013	4.9%

AREA 10 MONTHLY SALES



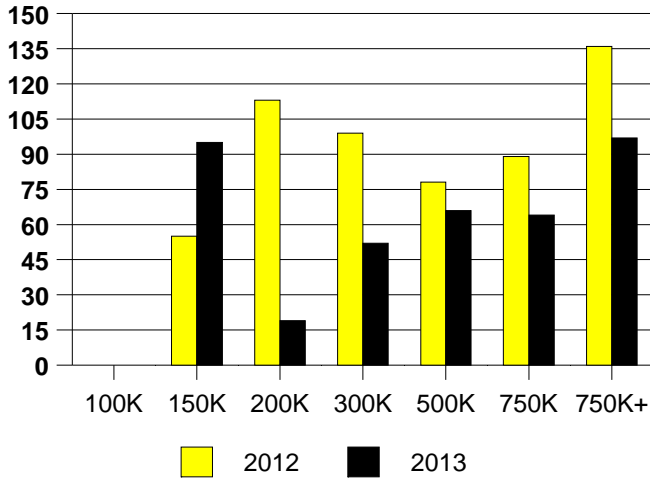
Inventory not shown where no sales
AREA 10 MONTHS OF INVENTORY



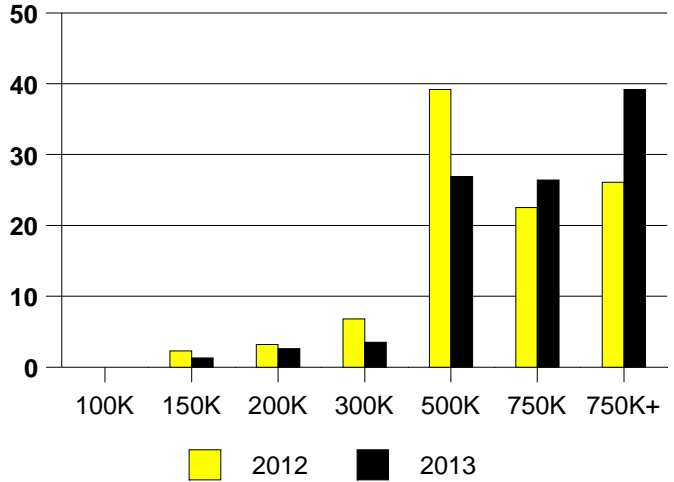
NTREIS Sold informaton as of 10/08/2013

	2012	2013
Total Sold Volume	\$ 158,703,543	\$ 196,510,986
Number of Sales	222	227
Median Sale Price	\$ 496,317	\$ 618,000

DAYS ON THE MARKET (DALLAS NORTH)



DALLAS N MKT SHARE BY PRICE RANGE



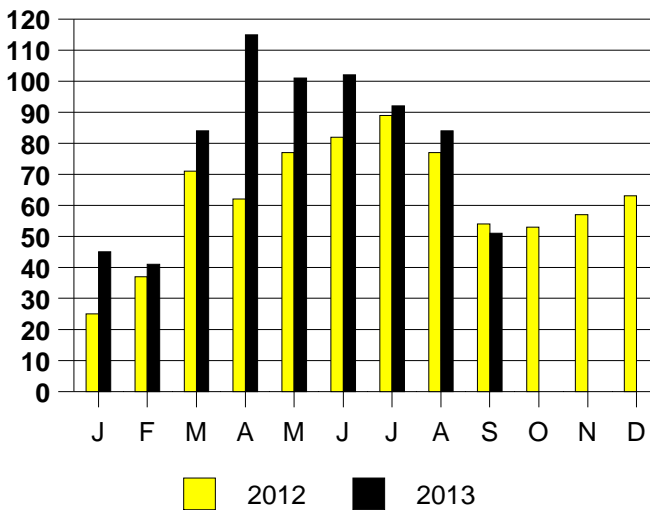
SALE/LIST PRICE RATIO

0K-100K	NONE
101K-150K	95.5%
151K-200K	94.9%
201K-300K	95.2%
301K-500K	96.2%
501K-750K	96.9%
751K+	95.7%

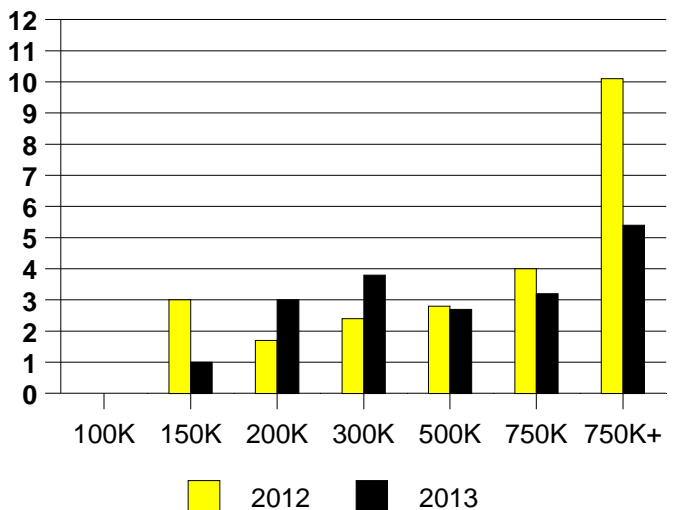
AVERAGE OVERPRICING
Original List Price to Sale Price

2012	10.1%
2013	8.0%

DALLAS NORTH MONTHLY SALES



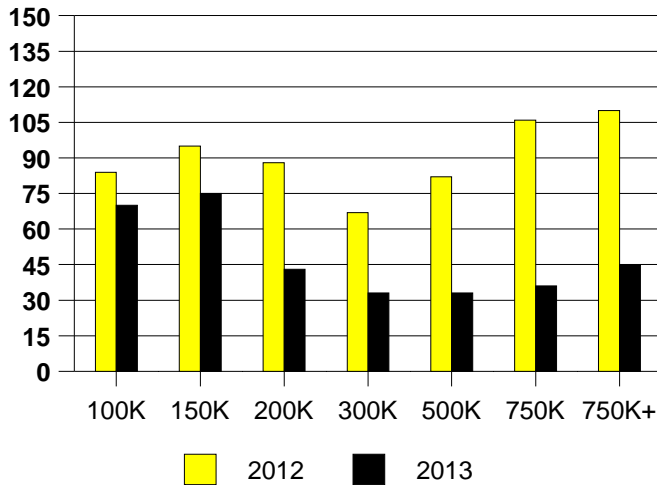
DALLAS NORTH MONTHS OF INVENTORY



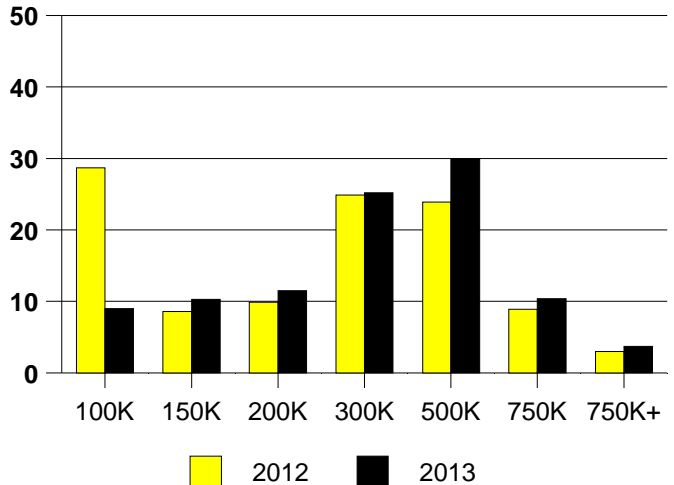
NTREIS Sold informaton as of 10/08/2013

	<u>2012</u>	<u>2013</u>
Total Sold Volume	\$ 169,578,801	\$ 225,764,031
Number of Sales	594	711
Median Sale Price	\$ 241,250	\$ 275,000

DAYS ON THE MARKET (DALLAS EAST)



DALLAS EAST MKT SHARE BY PRICE RANGE



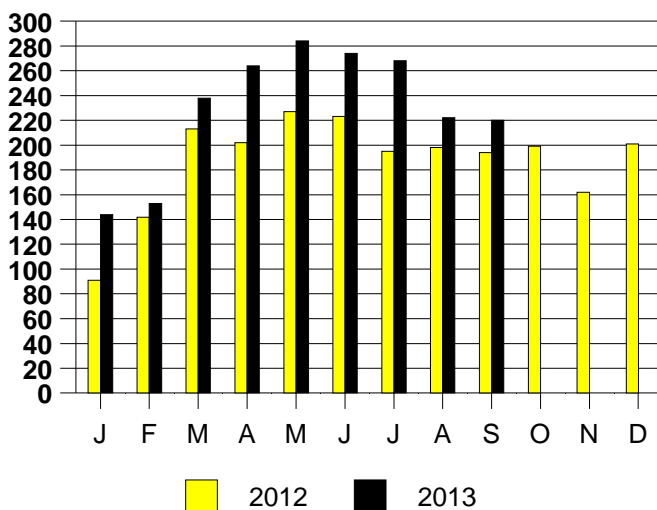
SALE/LIST PRICE RATIO

0K-100K	95.4%
101K-150K	97.2%
151K-200K	96.9%
201K-300K	98.5%
301K-500K	98.3%
501K-750K	97.8%
751K+	96.4%

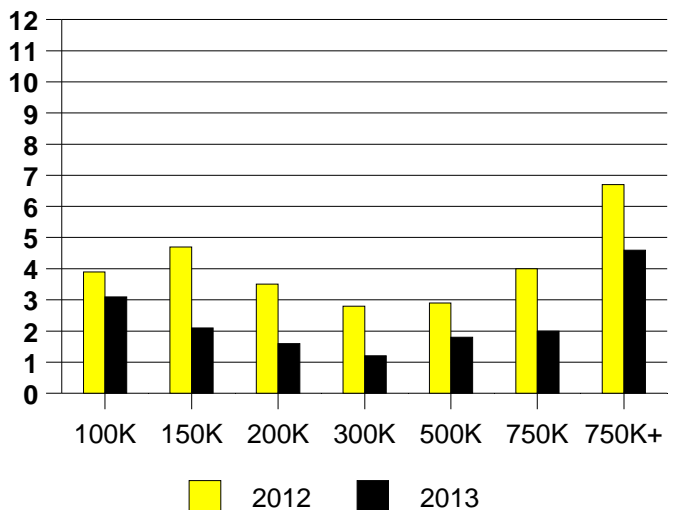
AVERAGE OVERPRICING
Original List Price to Sale Price

2012	8.5%
2013	4.4%

DALLAS EAST MONTHLY SALES



DALLAS EAST MONTHS OF INVENTORY

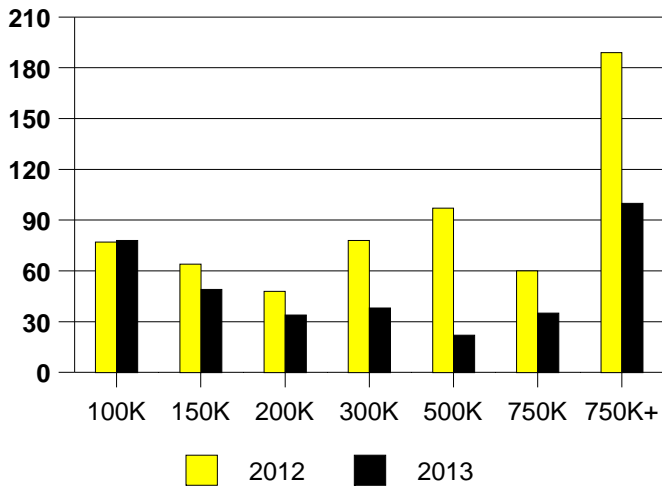


NTREIS Sold informaton as of 10/08/2013

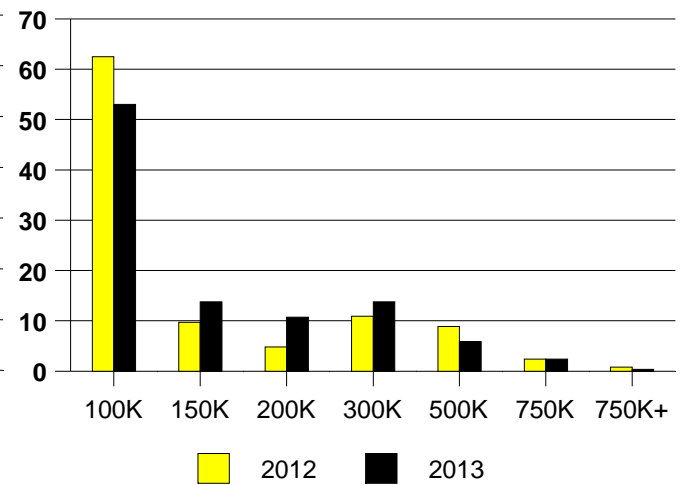
CHICAGO TITLE

	<u>2012</u>	<u>2013</u>
Total Sold Volume	\$ 33,224,955	\$ 35,783,216
Number of Sales	248	253
Median Sale Price	\$ 76,750	\$ 95,000

DAYS ON THE MARKET (AREA 14)



AREA 14 MKT SHARE BY PRICE RANGE



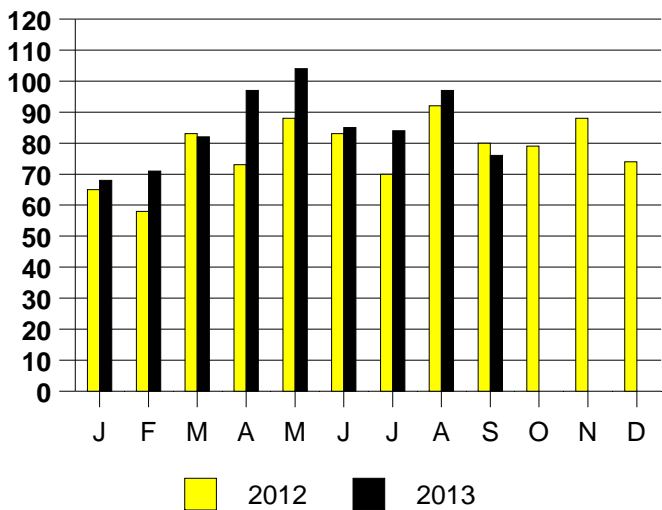
SALE/LIST PRICE RATIO

0K-100K	97.1%
101K-150K	102.5%
151K-200K	98.1%
201K-300K	99.3%
301K-500K	98.8%
501K-750K	99.8%
751K+	93.8%

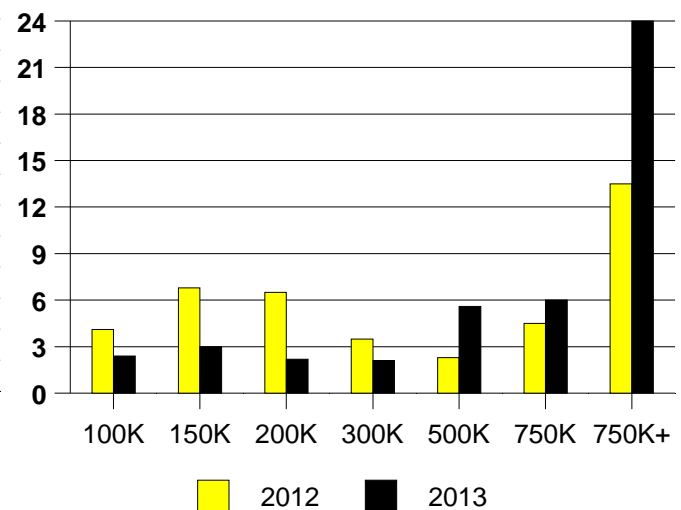
AVERAGE OVERPRICING
Original List Price to Sale Price

2012	9.3%
2013	9.7%

AREA 14 MONTHLY SALES



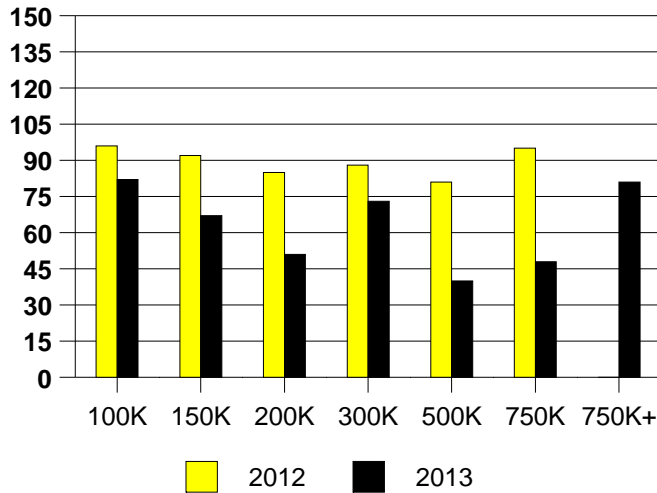
Inventory not shown where no sales
AREA 14 MONTHS OF INVENTORY



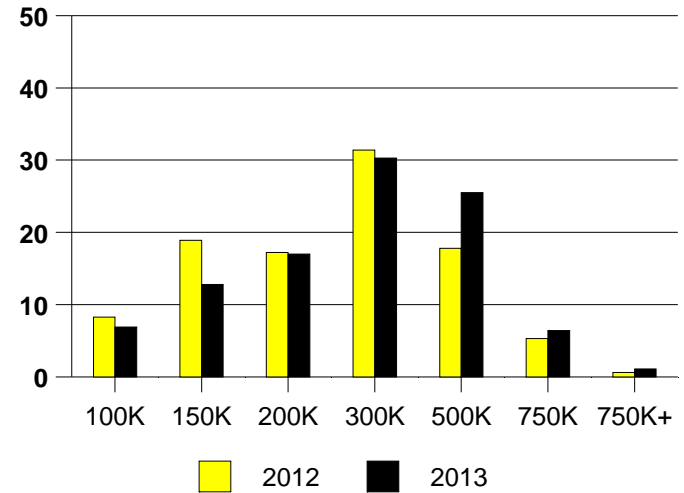
NTREIS Sold informaton as of 10/08/2013

	<u>2012</u>	<u>2013</u>
Total Sold Volume	\$ 41,328,114	\$ 50,680,987
Number of Sales	169	188
Median Sale Price	\$ 215,900	\$ 243,900

DAYS ON THE MARKET (AREA 16)



% MARKET SHARE BY PRICE RANGE(AREA 16)



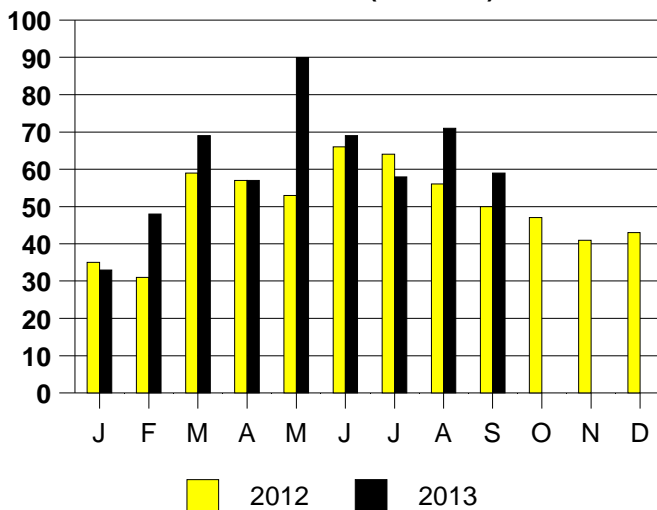
SALE/LIST PRICE RATIO

0K-100K	94.9%
101K-150K	100.7%
151K-200K	95.6%
201K-300K	97.7%
301K-500K	97.8%
501K-750K	97.0%
751K+	97.6%

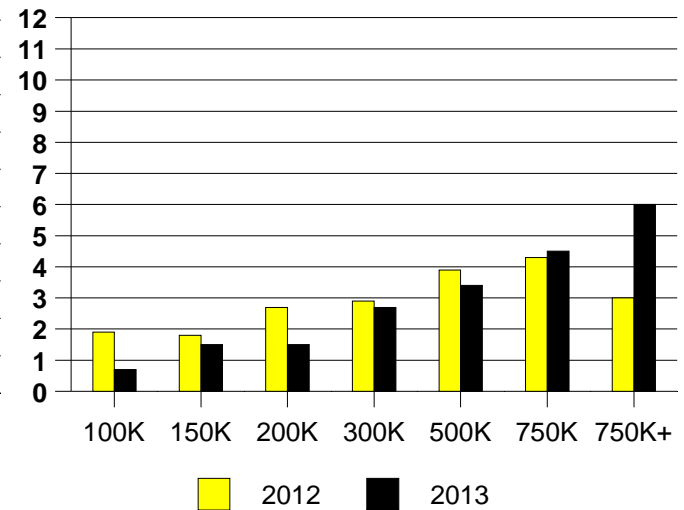
AVERAGE OVERPRICING
Original List Price to Sale Price

2012	8.8%
2013	5.7%

MONTHLY SALES (AREA 16)



Inventory not shown where no sales
MONTHS OF INVENTORY(AREA 16)

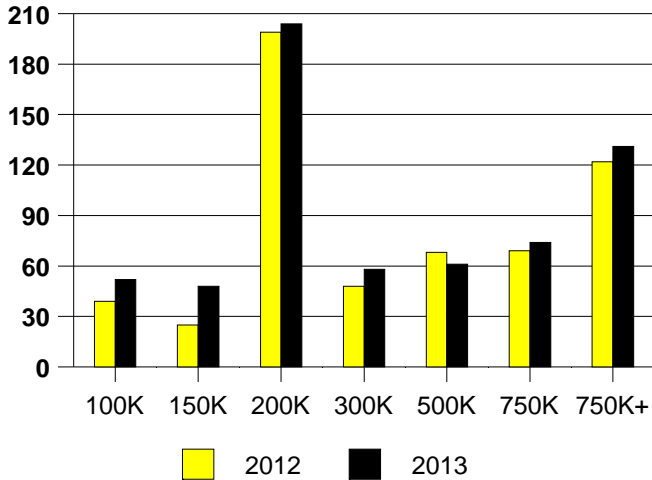


NTREIS Sold informaton as of 10/08/2013

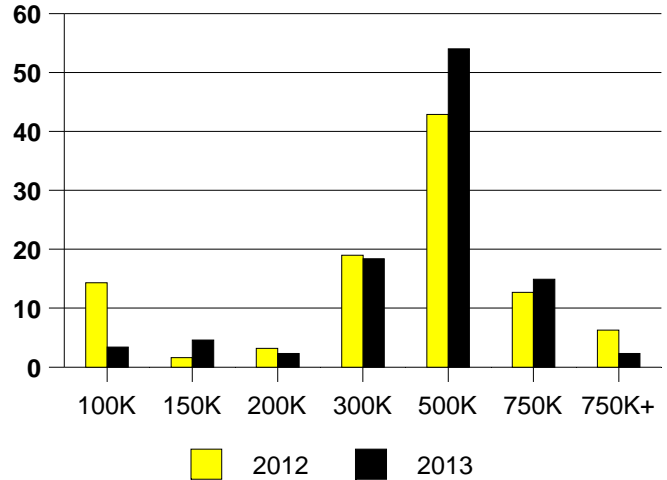
CHICAGO TITLE

	<u>2012</u>	<u>2013</u>
Total Sold Volume	\$ 22,926,778	\$ 33,271,149
Number of Sales	63	87
Median Sale Price	\$ 345,000	\$ 378,000

DAYS ON THE MARKET (DALLAS OAK LAWN)



DALLAS NE MKT SHARE BY PRICE RANGE



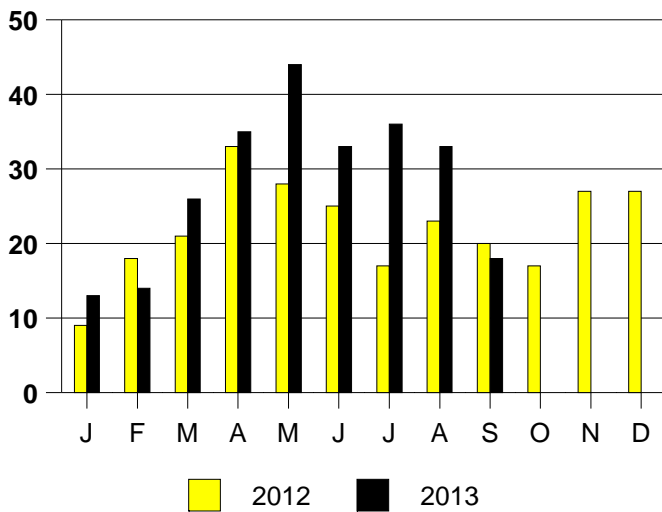
SALE/LIST PRICE RATIO

0K-100K	98.4%
101K-150K	92.0%
151K-200K	95.8%
201K-300K	96.8%
301K-500K	98.5%
501K-750K	95.9%
751K+	97.9%

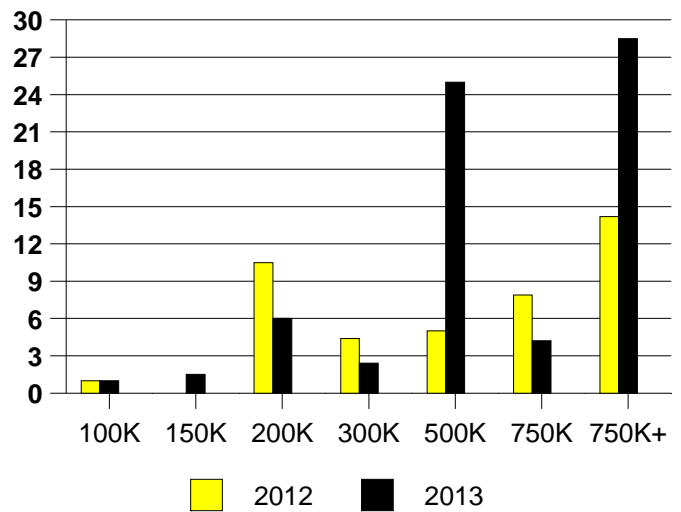
AVERAGE OVERPRICING
Original List Price to Sale Price

2012	6.8%
2013	4.0%

DALLAS OAKLAWN MONTHLY SALES



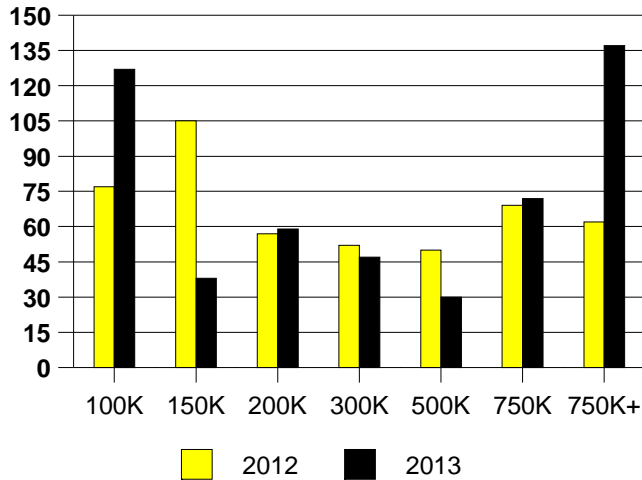
DALLAS OAKLAWN MONTHS OF INVENTORY



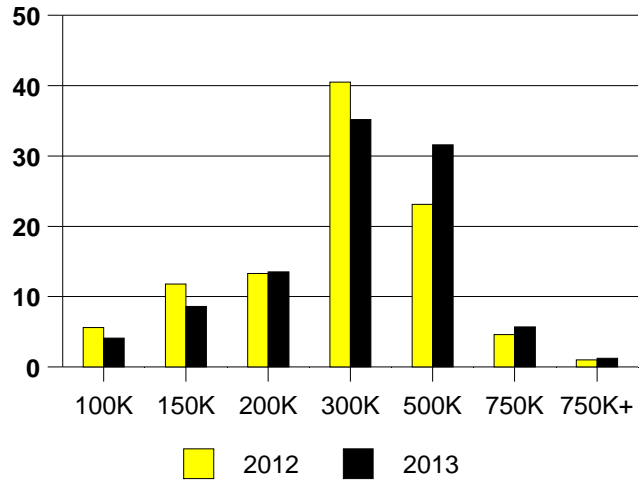
NTREIS Sold informaton as of 10/08/2013

	2012	2013
Total Sold Volume	\$ 50,791,781	\$ 69,851,119
Number of Sales	195	244
Median Sale Price	\$ 245,000	\$ 271,000

DAYS ON THE MARKET (AREA 18)



MKT SHARE BY PRICE RANGE(AREA 18)



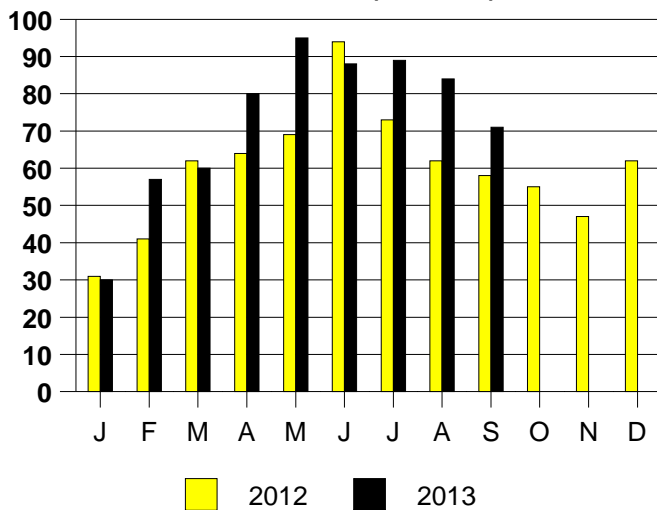
SALE/LIST PRICE RATIO

0K-100K	94.1%
101K-150K	94.3%
151K-200K	97.0%
201K-300K	98.0%
301K-500K	98.4%
501K-750K	97.6%
751K+	99.8%

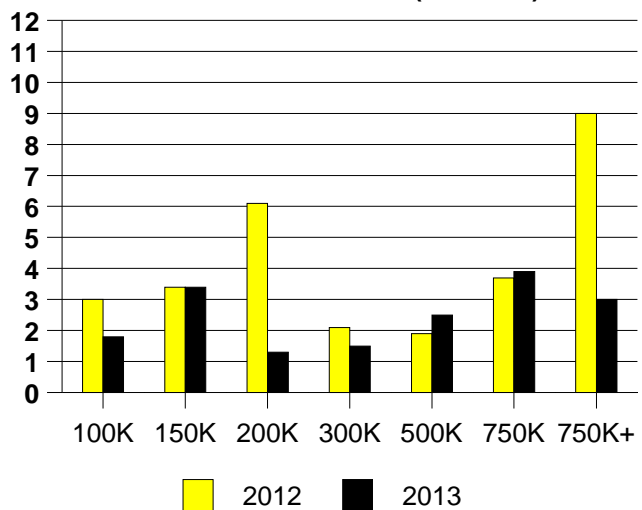
AVERAGE OVERPRICING
Original List Price to Sale Price

2012	7.2%
2013	5.3%

MONTHLY SALES (AREA 18)



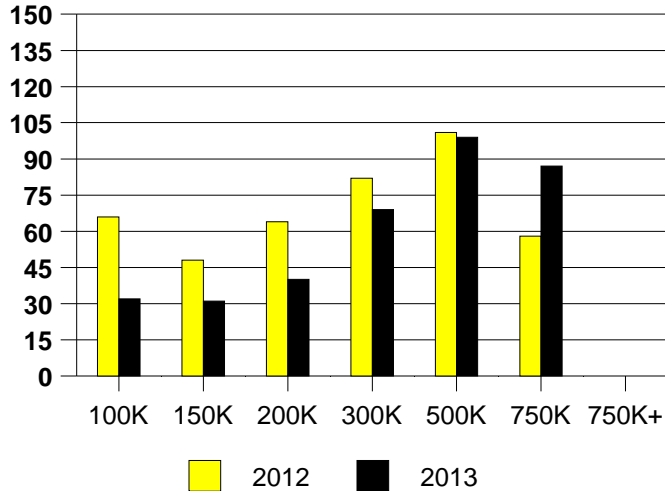
Inventory not shown where no sales
MONTHS OF INVENTORY (AREA 18)



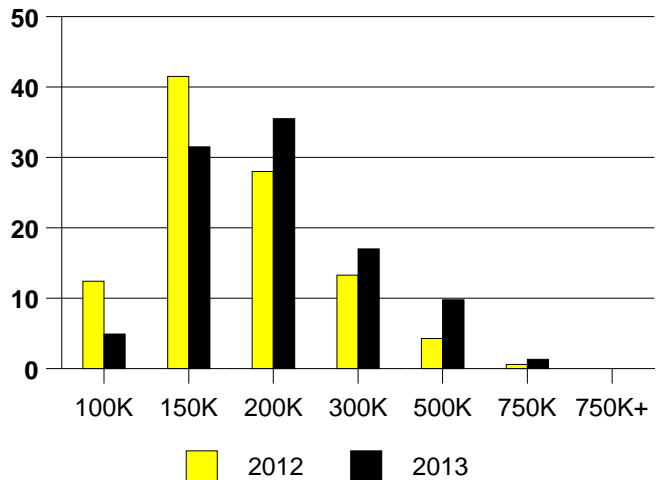
NTREIS Sold informaton as of 10/08/2013

	<u>2012</u>	<u>2013</u>
Total Sold Volume	\$ 56,579,263	\$ 85,101,602
Number of Sales	347	448
Median Sale Price	\$ 147,500	\$ 166,300

DAYS ON THE MARKET (DENTON)



DENTON MARKET SHARE BY PRICE RANGE



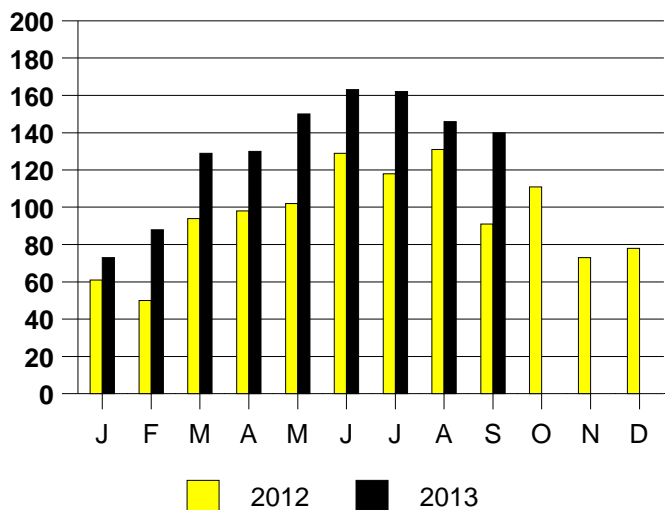
SALE/LIST PRICE RATIO

0K-100K	96.8%
101K-150K	98.3%
151K-200K	98.4%
201K-300K	98.0%
301K-500K	96.3%
501K-750K	95.2%
751K+	NONE

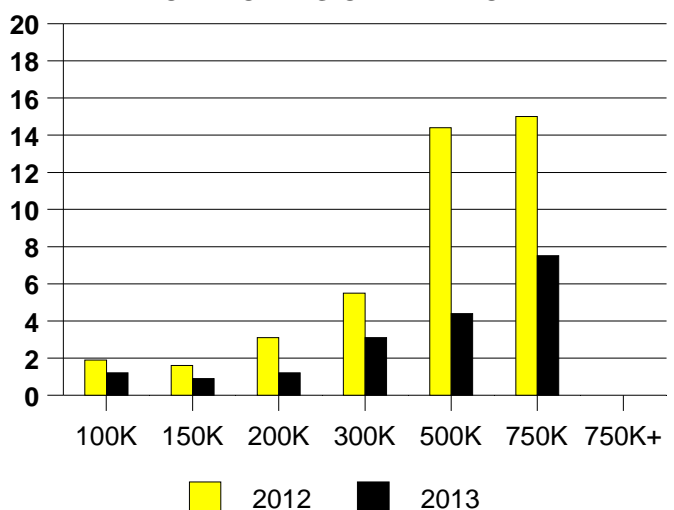
AVERAGE OVERPRICING
Original List Price to Sale Price

2012	6.2%
2013	3.6%

DENTON MONTHLY SALES



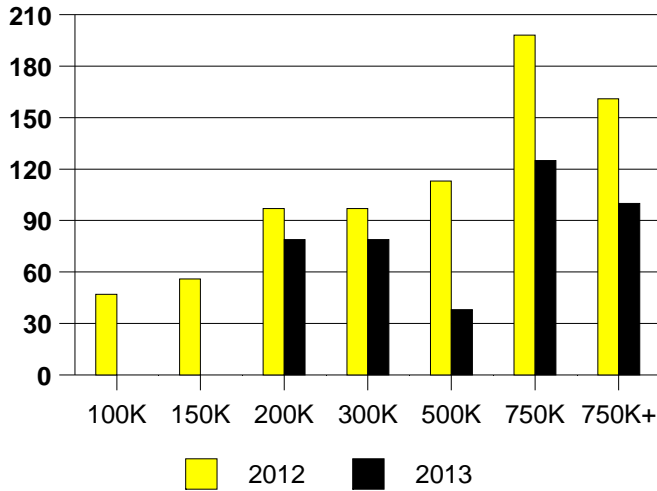
Inventory not shown where no sales
DENTON MONTHS OF INVENTORY



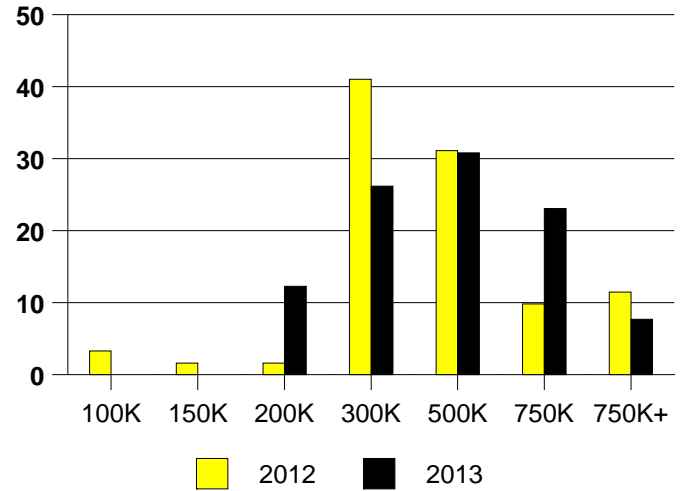
NTREIS Sold informaton as of 10/08/2013

	<u>2012</u>	<u>2013</u>
Total Sold Volume	\$ 25,019,323	\$ 27,624,350
Number of Sales	61	65
Median Sale Price	\$ 321,000	\$ 345,000

DAYS ON THE MARKET (FAIRVIEW)



FAIRVIEW MKT SHARE BY PRICE RANGE



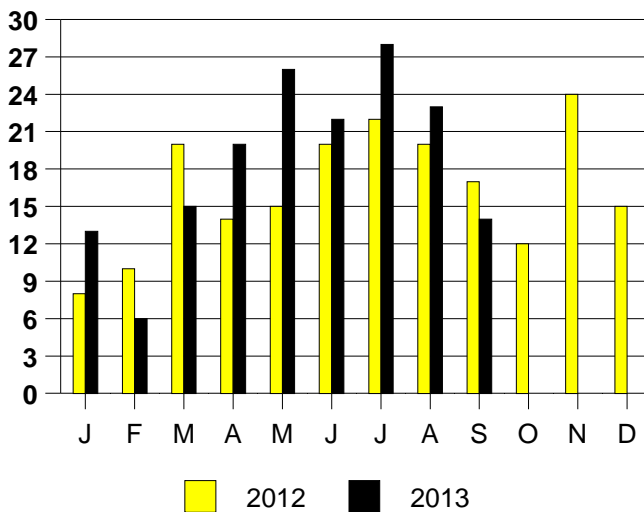
SALE/LIST PRICE RATIO

0K-100K	NONE
101K-150K	NONE
151K-200K	99.4%
201K-300K	98.5%
301K-500K	96.3%
501K-750K	94.7%
751K+	94.8%

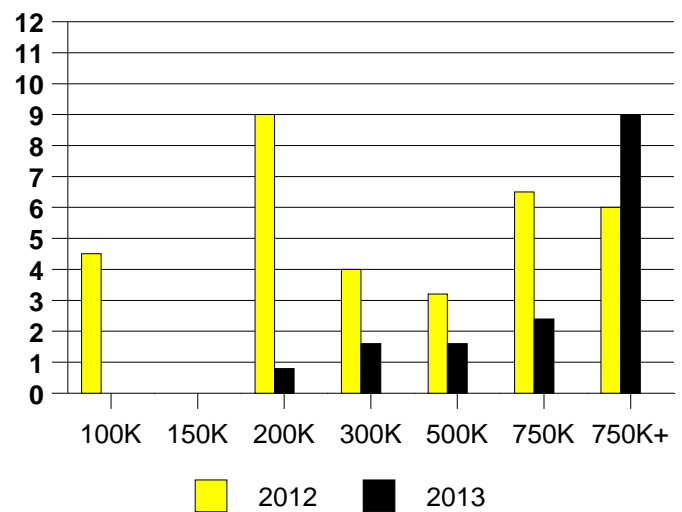
AVERAGE OVERPRICING
Original List Price to Sale Price

2012	4.3%
2013	6.0%

FAIRVIEW MONTHLY SALES

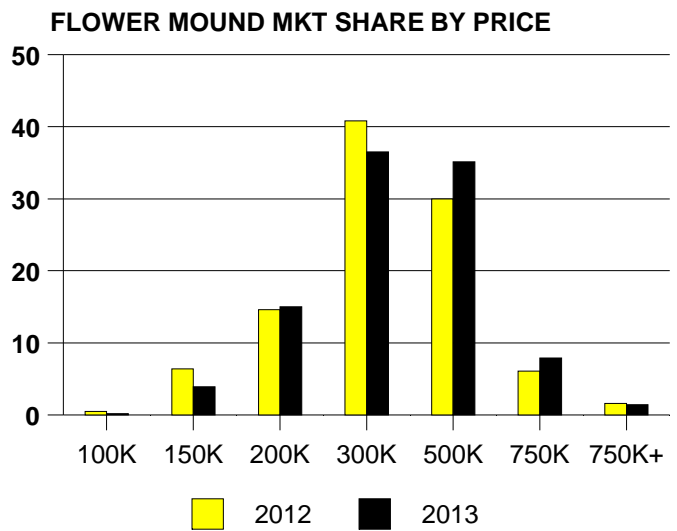
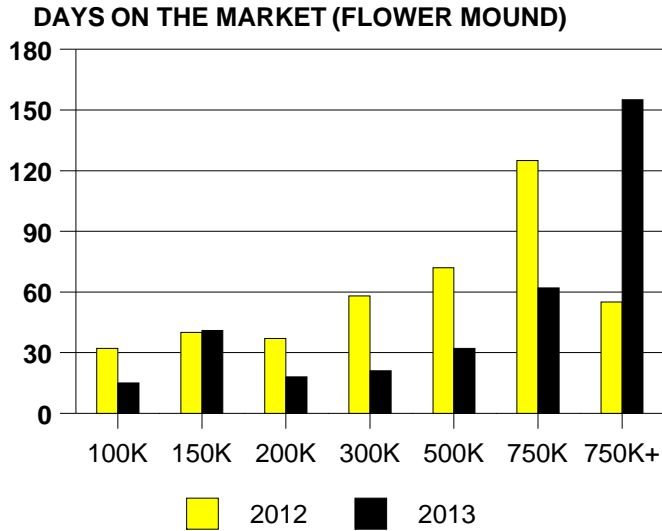


Inventory not shown where no sales
FAIRVIEW MONTHS OF INVENTORY



NTREIS Sold informaton as of 10/08/2013

	<u>2012</u>	<u>2013</u>
Total Sold Volume	\$ 113,474,225	\$ 141,168,663
Number of Sales	377	441
Median Sale Price	\$ 271,000	\$ 290,000



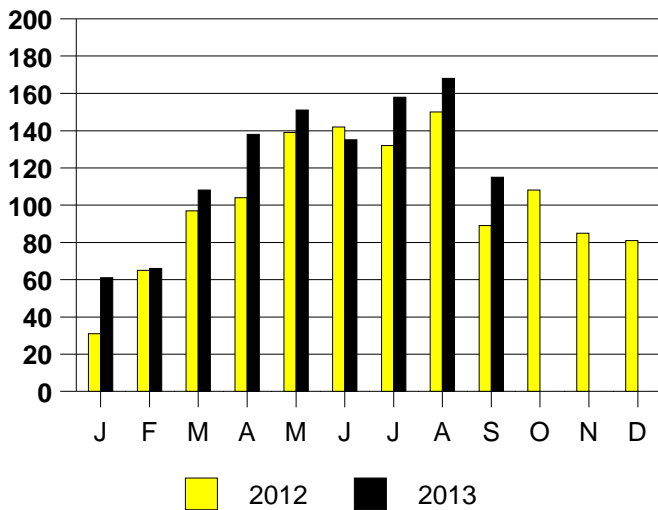
SALE/LIST PRICE RATIO

0K-100K	105.9%
101K-150K	98.6%
151K-200K	99.6%
201K-300K	99.7%
301K-500K	98.8%
501K-750K	97.5%
751K+	97.5%

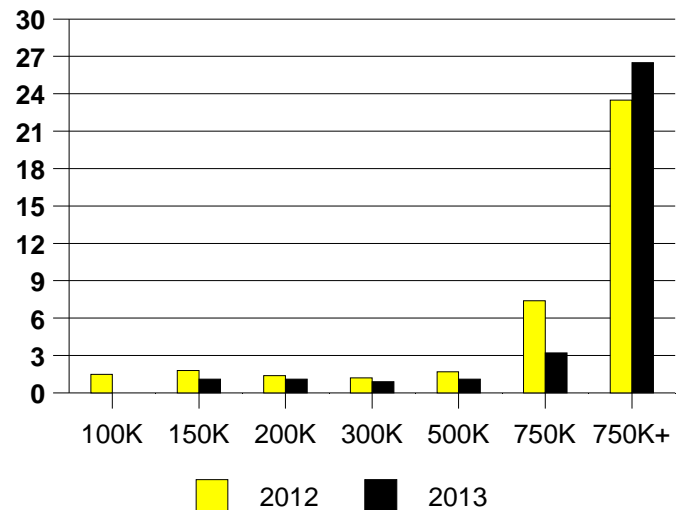
AVERAGE OVERPRICING
Original List Price to Sale Price

2012	5.1%
2013	2.0%

FLOWER MOUND MONTHLY SALES



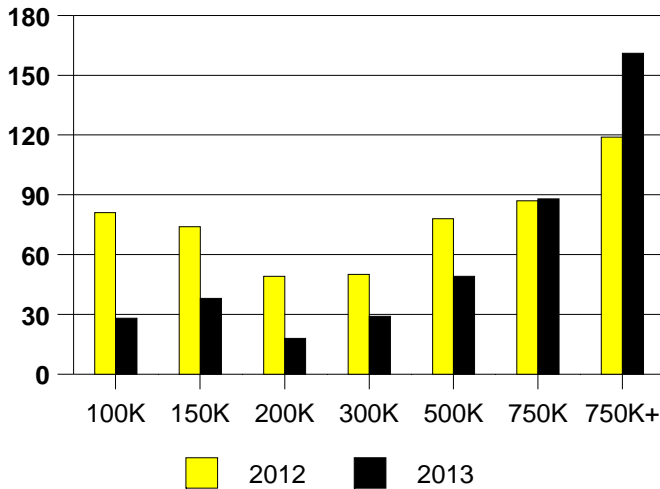
FLOWER MOUND MONTHS OF INVENTORY



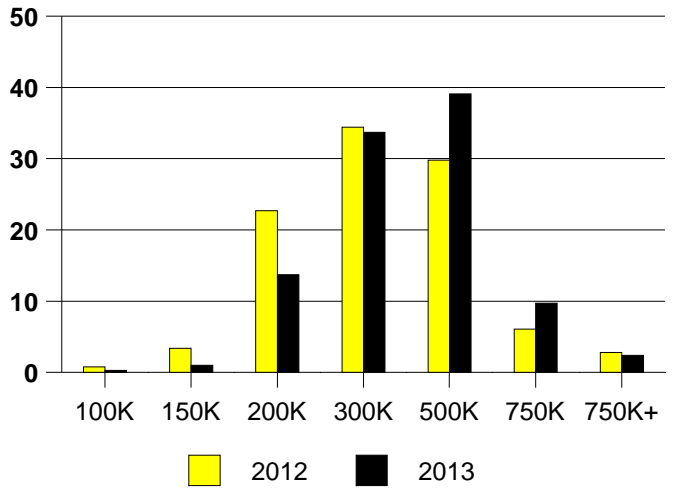
NTREIS Sold informaton as of 10/08/2013

	<u>2012</u>	<u>2013</u>
Total Sold Volume	\$ 241,685,286	\$ 337,490,145
Number of Sales	785	981
Median Sale Price	\$ 268,500	\$ 307,000

DAYS ON MARKET(FRISCO)



FRISCO MKT SHARE BY PRICE RANGE



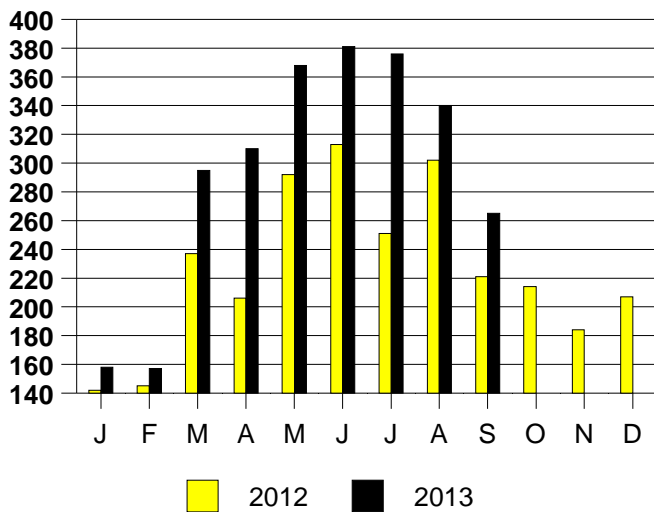
SALE/LIST PRICE RATIO

0K-100K	106.3%
101K-150K	98.8%
151K-200K	99.3%
201K-300K	99.4%
301K-500K	97.6%
501K-750K	97.3%
751K+	96.8%

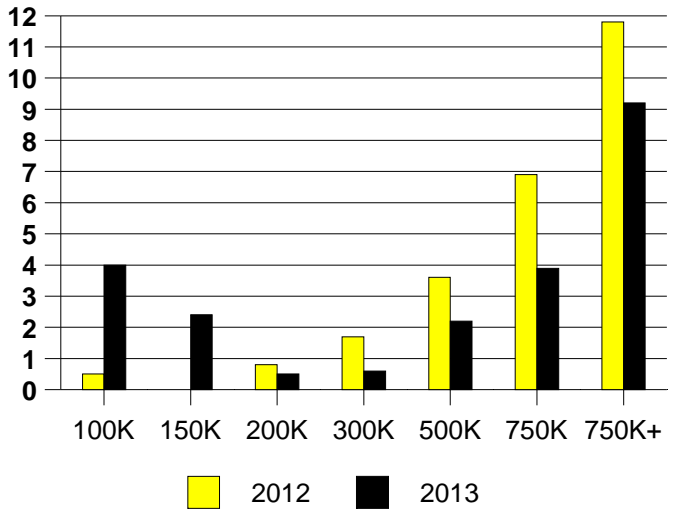
AVERAGE OVERPRICING
Original List Price to Sale Price

2012	4.7%
2013	2.6%

FRISCO MONTHLY SALES



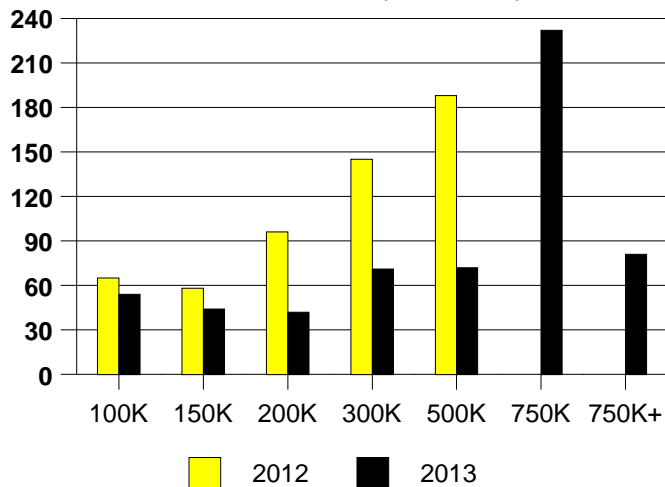
Inventory not shown where no sales
FRISCO MONTHS OF INVENTORY



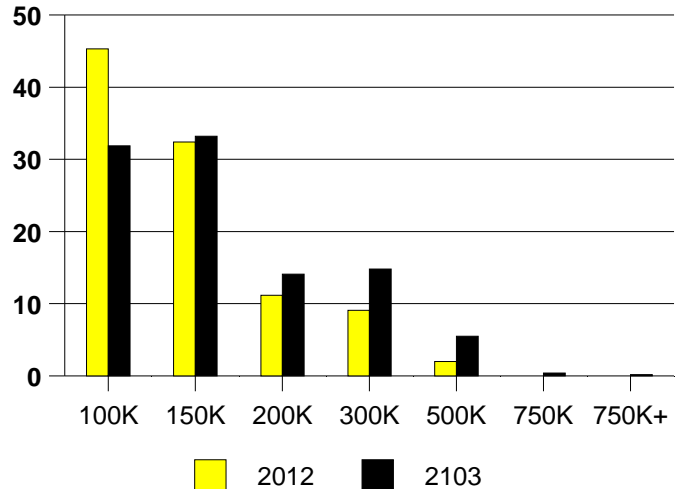
NTREIS Sold informaton as of 10/08/2013

	<u>2012</u>	<u>2013</u>
Total Sold Volume	\$ 65,584,634	\$ 85,219,810
Number of Sales	547	567
Median Sale Price	\$ 108,000	\$ 125,000

DAYS ON THE MARKET (GARLAND)



GARLAND MKT SHARE BY PRICE RANGE



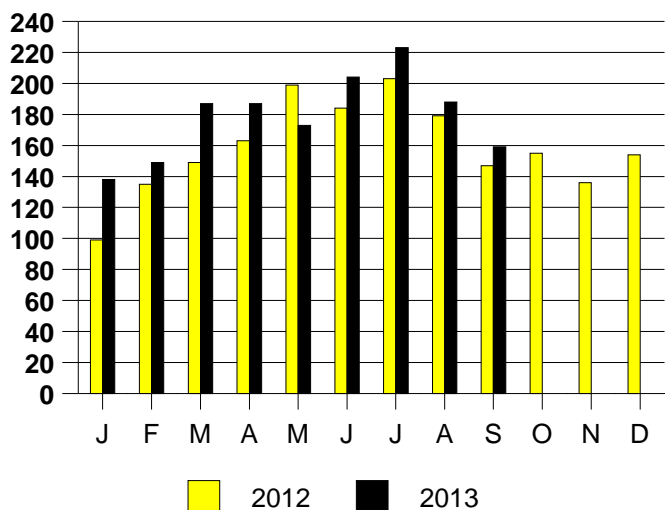
SALE/LIST PRICE RATIO

0K-100K	98.1%
101K-150K	98.2%
151K-200K	98.8%
201K-300K	97.7%
301K-500K	96.7%
501K-750K	98.3%
751K+	96.2%

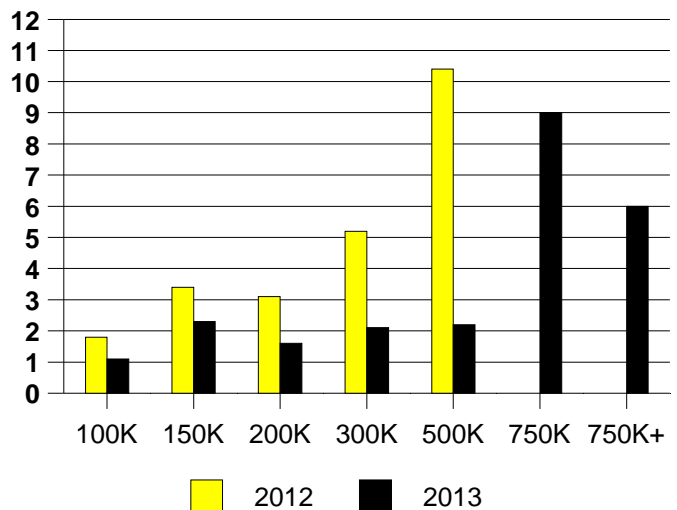
AVERAGE OVERPRICING
Original List Price to Sale Price

2012	7.0%
2013	9.0%

GARLAND MONTHLY SALES

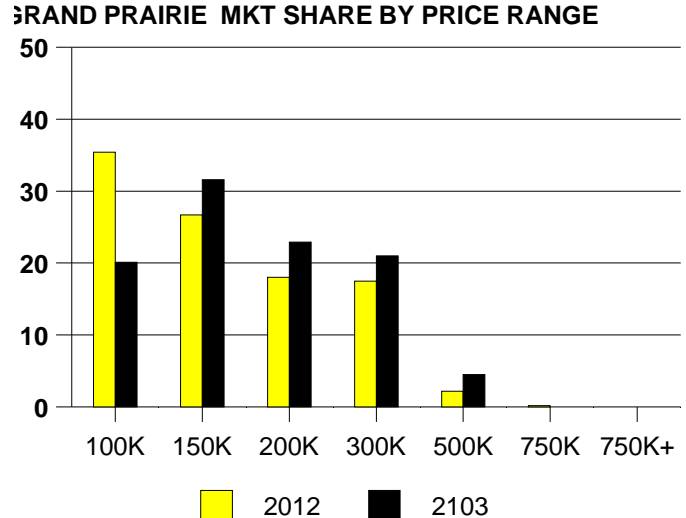
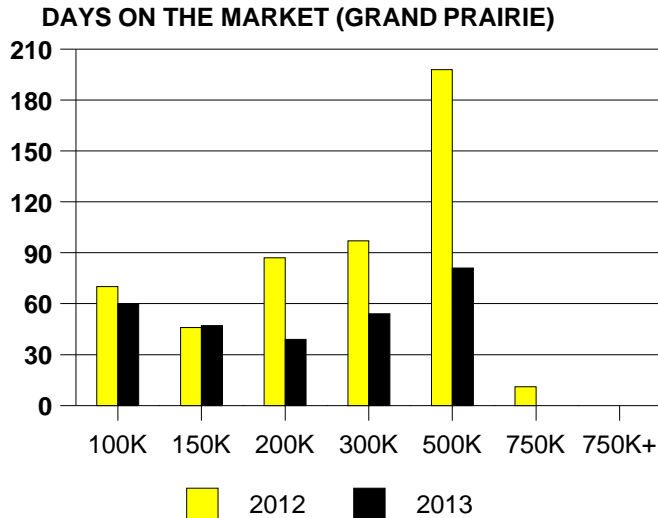


Inventory not shown where no sales
GARLAND MONTHS OF INVENTORY



NTREIS Sold informaton as of 10/08/2013

	<u>2012</u>	<u>2013</u>
Total Sold Volume	\$56,057,440	\$ 73,193,843
Number of Sales	401	462
Median Sale Price	\$ 127,000	\$ 147,750



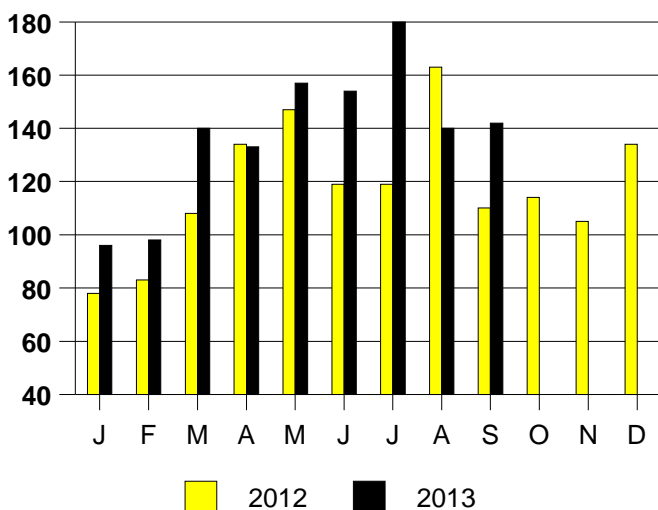
SALE/LIST PRICE RATIO

0K-100K	99.4%
101K-150K	99.1%
151K-200K	98.3%
201K-300K	97.9%
301K-500K	96.2%
501K-750K	NONE
751K+	NONE

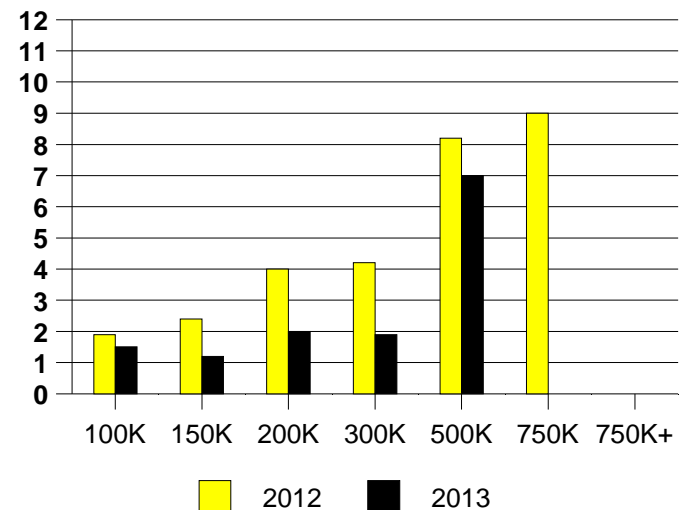
AVERAGE OVERPRICING
Original List Price to Sale Price

2012	6.3%
2013	2.9%

GRAND PRAIRIE MONTHLY SALES



GRAND PRAIRIE MONTHS OF INVENTORY

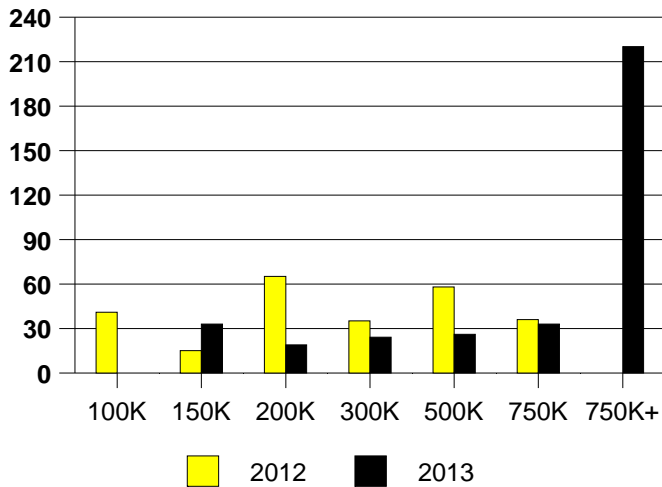


NTREIS Sold informaton as of 10/08/2013

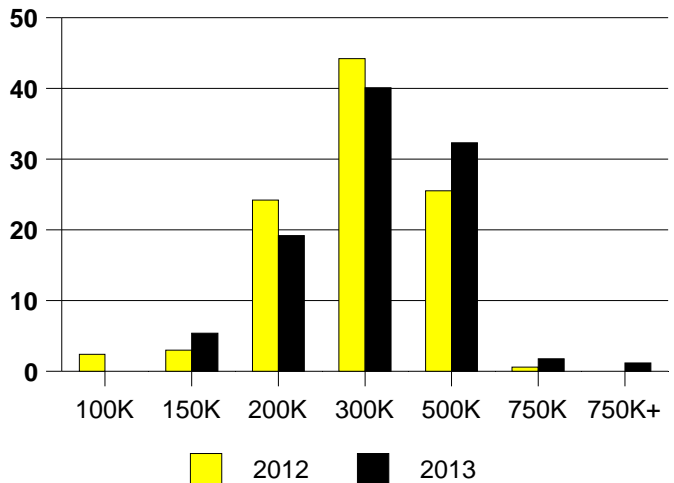
CHICAGO TITLE

	<u>2012</u>	<u>2013</u>
Total Sold Volume	\$ 41,833,336	\$ 46,089,334
Number of Sales	165	167
Median Sale Price	\$ 245,000	\$ 255,000

DAYS ON THE MARKET (GRAPEVINE)



GRAPEVINE MKT SHARE BY PRICE RANGE



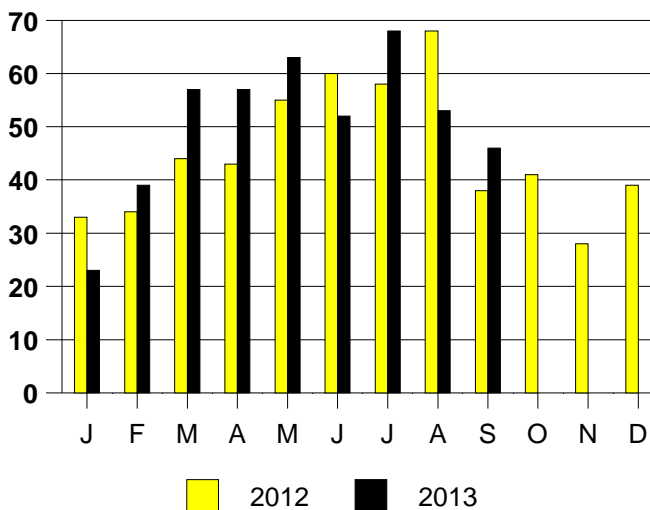
SALE/LIST PRICE RATIO

0K-100K	NONE
101K-150K	94.8%
151K-200K	99.4%
201K-300K	98.3%
301K-500K	98.9%
501K-750K	95.1%
751K+	86.3%

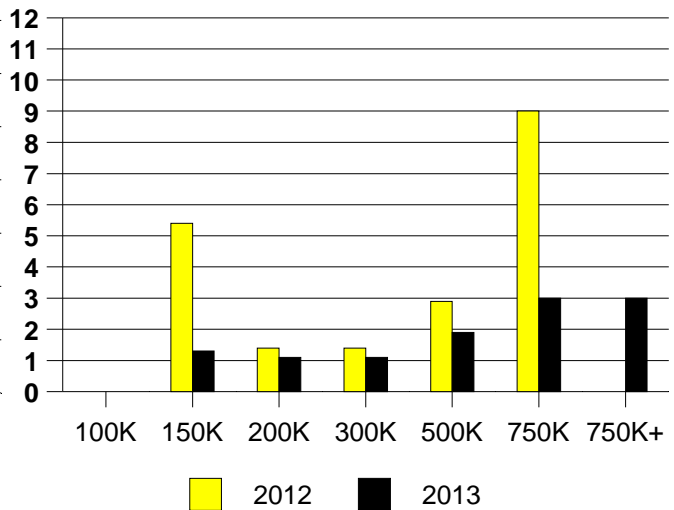
AVERAGE OVERPRICING
Original List Price to Sale Price

2012	3.9%
2013	2.9%

GRAPEVINE MONTHLY SALES



Inventory not shown where no sales
GRAPEVINE MONTHS OF INVENTORY

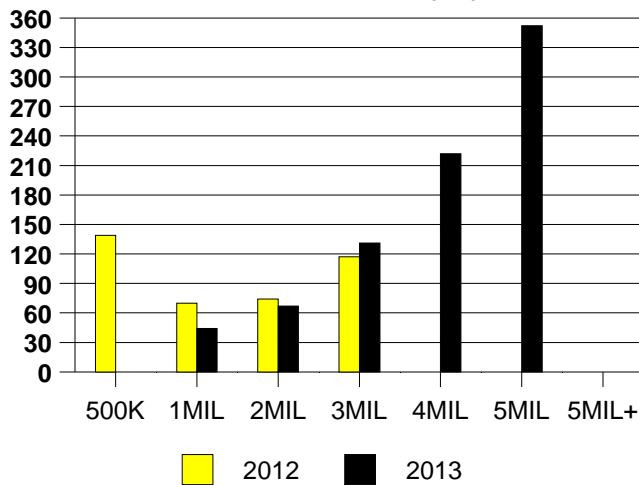


NTREIS Sold informaton as of 10/08/2013

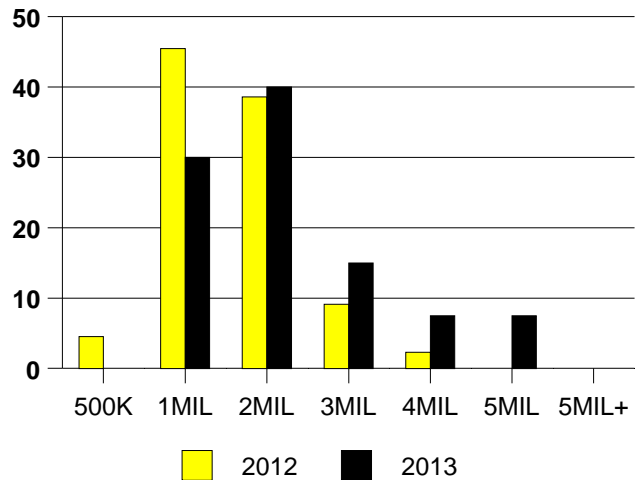
CHICAGO TITLE

	<u>2012</u>	<u>2013</u>
Total Sold Volume	\$ 52,868,981	\$ 70,806,216
Number of Sales	44	40
Median Sale Price	\$ 1,050,000	\$ 1,450,000

DAYS ON THE MARKET (HP)



MKT SHARE BY PRICE RANGE (HP)



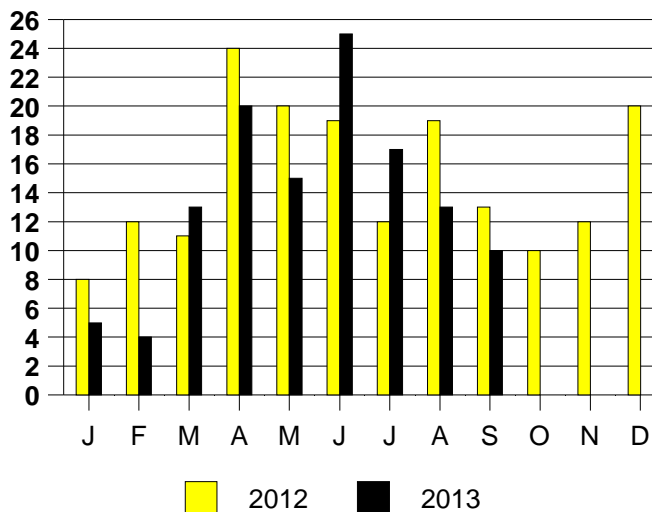
SALE/LIST PRICE RATIO

0K-500K	NONE
501K-1MIL	97.2%
1MIL-2MIL	94.7%
2MIL-3MIL	92.9%
3MIL-4MIL	92.0%
4MIL-5MIL	91.5%
5MIL+	NONE

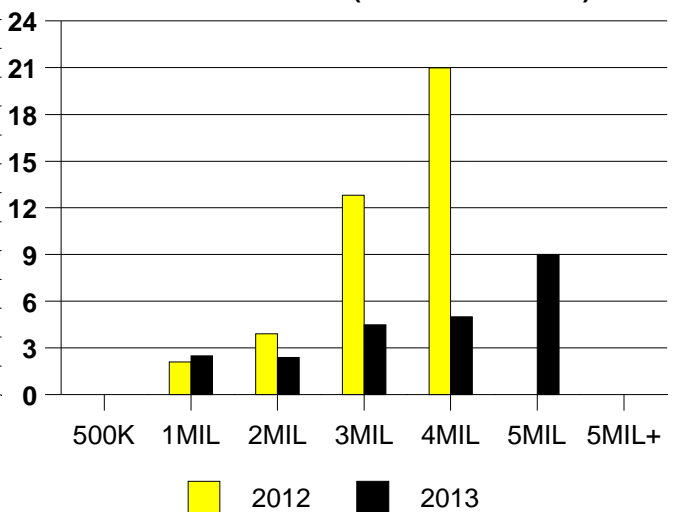
AVERAGE OVERPRICING

Orig List Price to Sale Price	
2012	10.1%
2013	10.0%

HIGHLAND PARK MONTHLY SALES



MONTHS OF INVENTORY (HIGHLAND PARK)
Inventory not shown where no sales

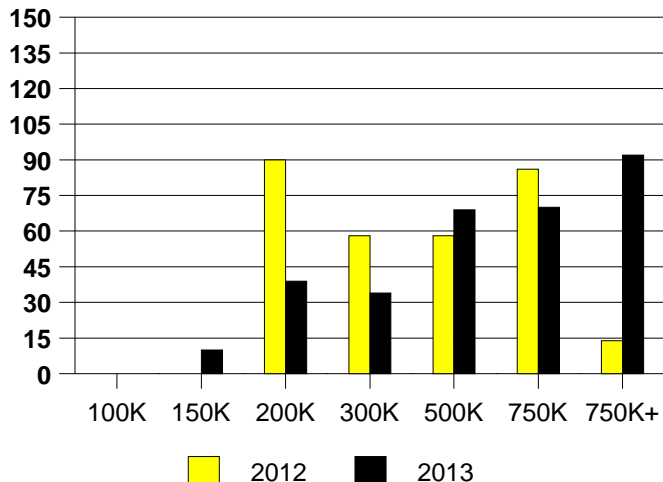


NTREIS Sold information as of 10/08/2013

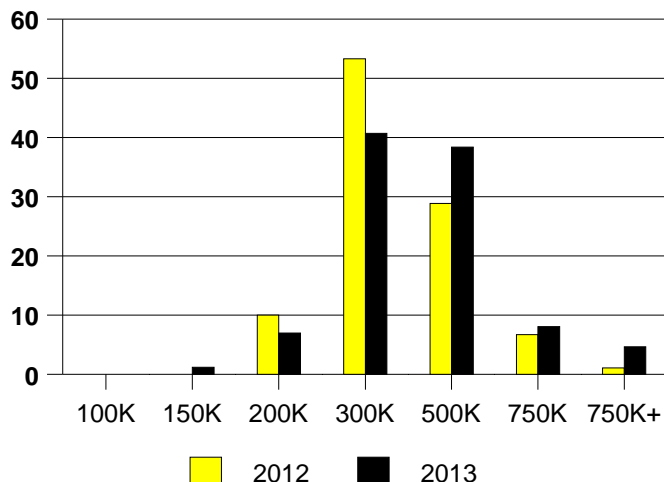
CHICAGO TITLE

	<u>2012</u>	<u>2013</u>
Total Sold Volume	\$ 28,280,844	\$ 29,797,188
Number of Sales	90	86
Median Sale Price	\$ 275,950	\$ 301,750

DAYS ON THE MARKET(HV)



% MARKET SHARE BY PRICE RANGE HV



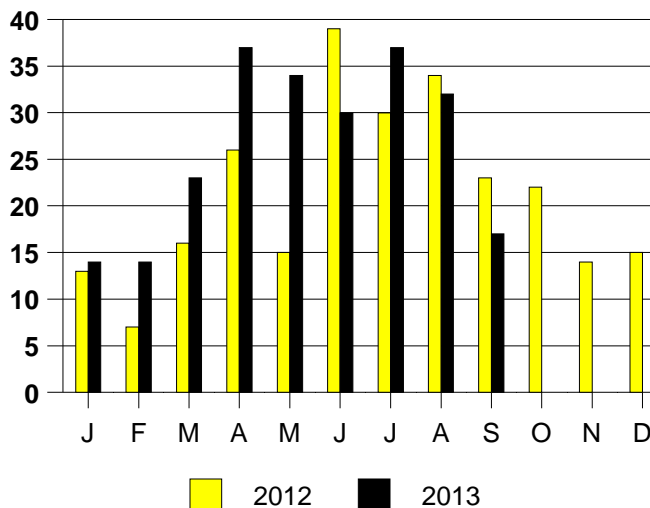
SALE/LIST PRICE RATIO

0K-100K	NONE
101K-150K	101.3%
151K-200K	96.5%
201K-300K	98.6%
301K-500K	98.4%
501K-750K	96.4%
751K+	97.3%

AVERAGE OVERPRICING

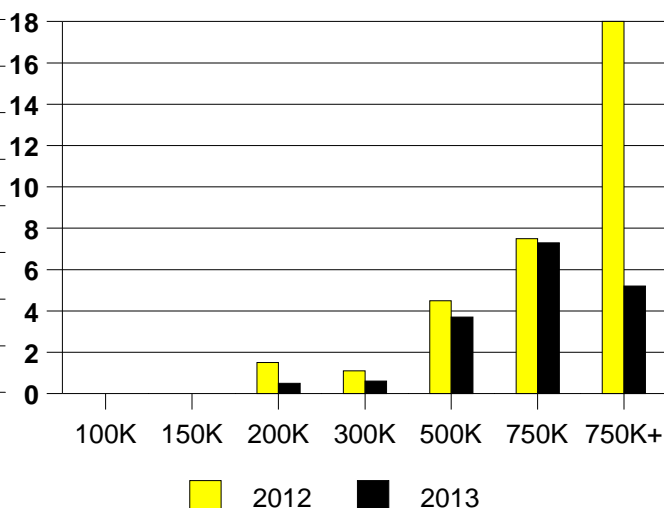
Original List Price to Sale Price	
2012	3.4%
2013	3.7%

HIGH VILLAGE MONTHLY SALES



Inventory not shown where no sales

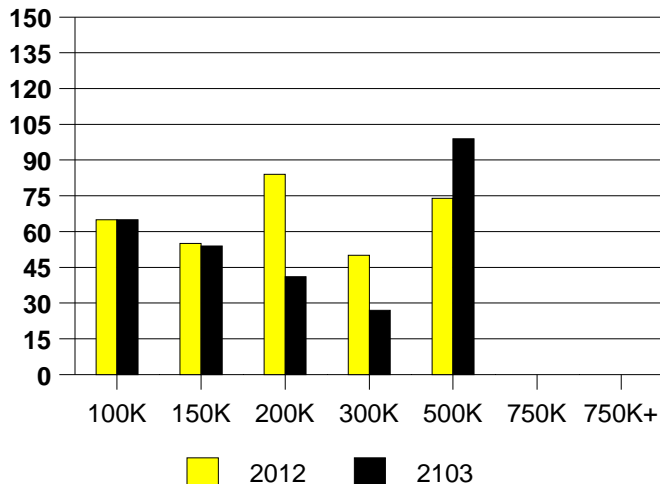
HIGHLAND VILLAGE MONTHS OF INVENTORY



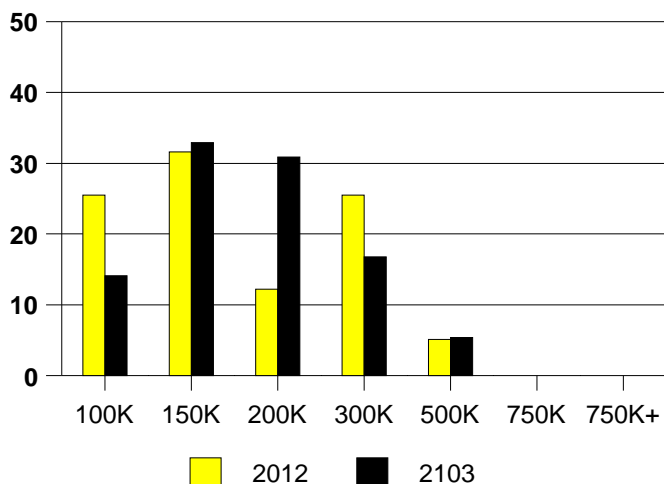
NTREIS Sold informaton as of 10/08/2013

	<u>2012</u>	<u>2013</u>
Total Sold Volume	\$ 15,727,818	\$ 24,996,847
Number of Sales	98	149
Median Sale Price	\$ 137,250	\$ 155,000

DAYS ON THE MARKET (HURST)



HURST MKT SHARE BY PRICE RANGE



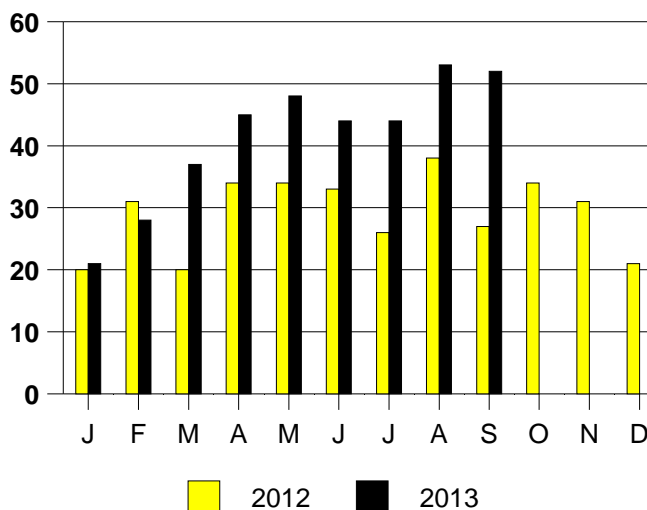
SALE/LIST PRICE RATIO

0K-100K	98.1%
101K-150K	98.7%
151K-200K	98.0%
201K-300K	98.4%
301K-500K	97.8%
501K-750K	NONE
751K+	NONE

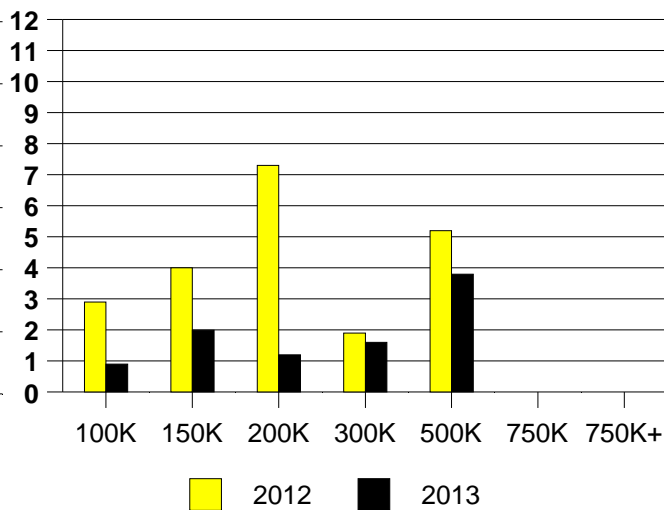
AVERAGE OVERPRICING Original List Price to Sale Price

2012	5.7%
2013	3.8%

HURST MONTHLY SALES



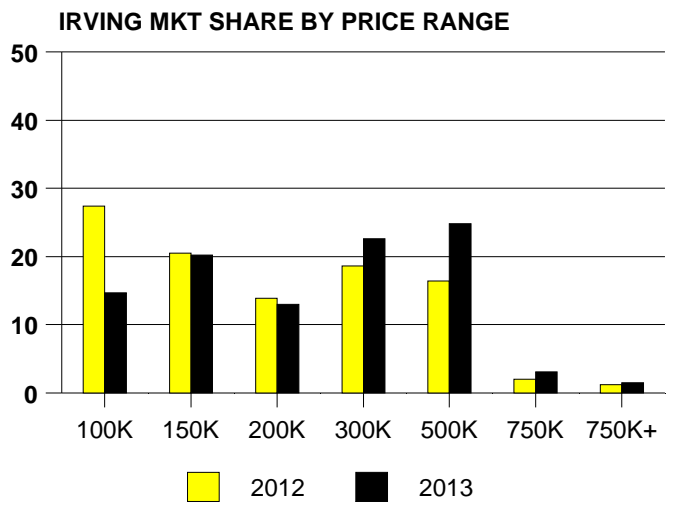
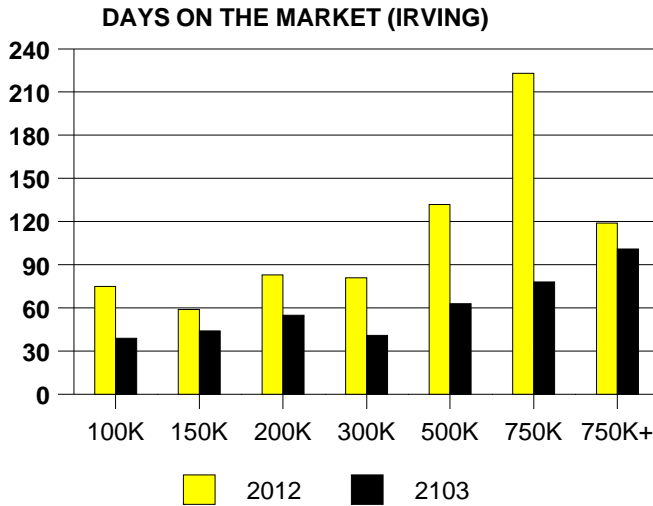
Inventory not shown where no sales HURST MONTHS OF INVENTORY



NTREIS Sold informaton as of 10/08/2013

CHICAGO TITLE

	<u>2012</u>	<u>2013</u>
Total Sold Volume	\$ 81,094,673	\$ 110,847,909
Number of Sales	409	455
Median Sale Price	\$ 160,000	\$ 212,000



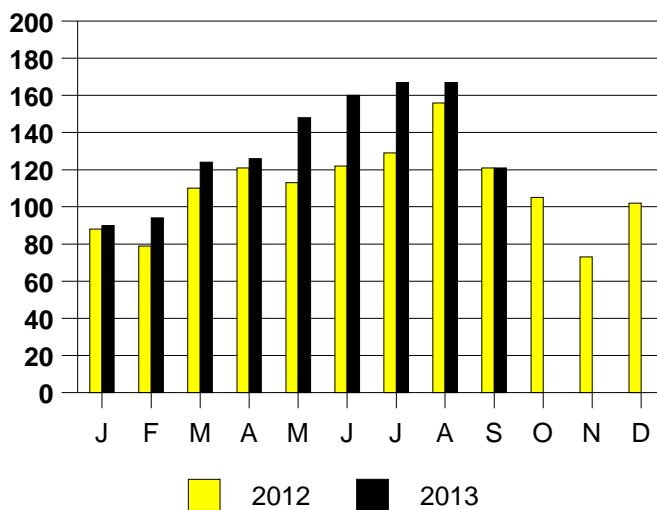
SALE/LIST PRICE RATIO

0K-100K	100.7%
101K-150K	97.8%
151K-200K	97.3%
201K-300K	97.6%
301K-500K	96.6%
501K-750K	95.6%
751K+	94.7%

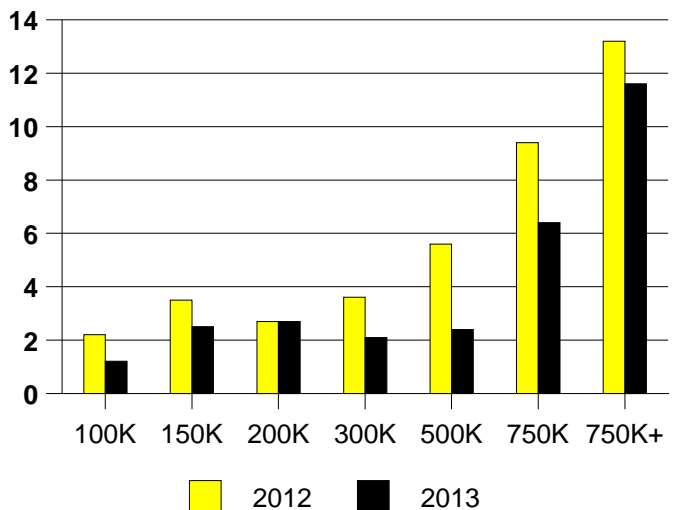
AVERAGE OVERPRICING
Original List Price to Sale Price

2012	7.1%
2013	4.2%

IRVING MONTHLY SALES



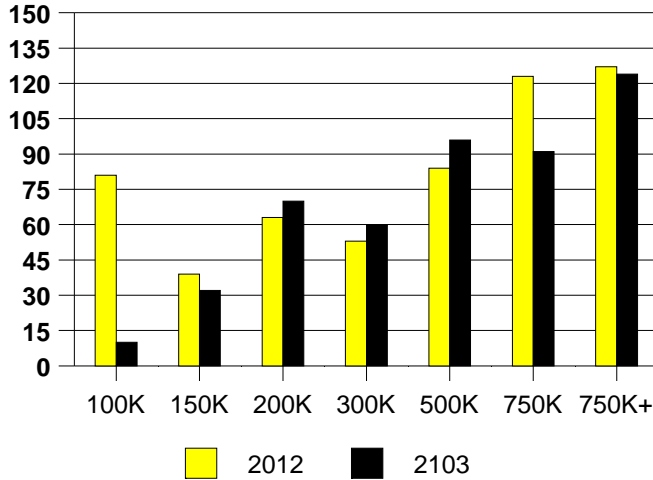
Inventory not shown where no sales
IRVING MONTHS OF INVENTORY



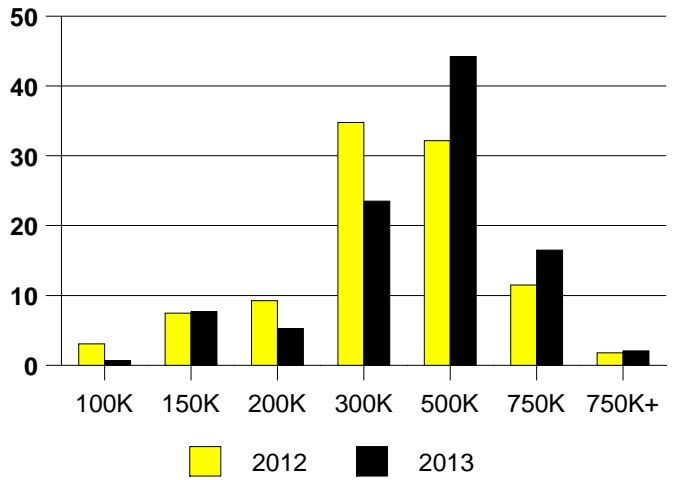
NTREIS Sold informaton as of 10/08/2013

	<u>2012</u>	<u>2013</u>
Total Sold Volume	\$ 74,328,200	\$ 104,558,537
Number of Sales	227	285
Median Sale Price	\$ 290,000	\$ 335,000

DAYS ON THE MARKET (KELLER)



KELLER MKT SHARE BY PRICE RANGE



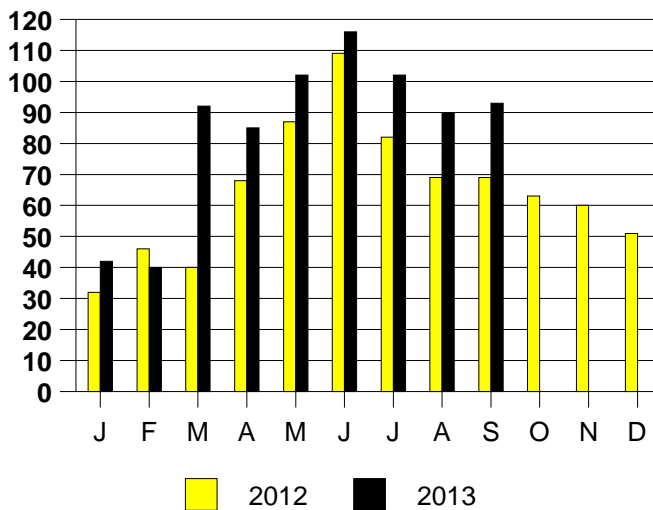
SALE/LIST PRICE RATIO

0K-100K	96.9%
101K-150K	97.5%
151K-200K	96.0%
201K-300K	98.9%
301K-500K	98.1%
501K-750K	98.4%
751K+	96.8%

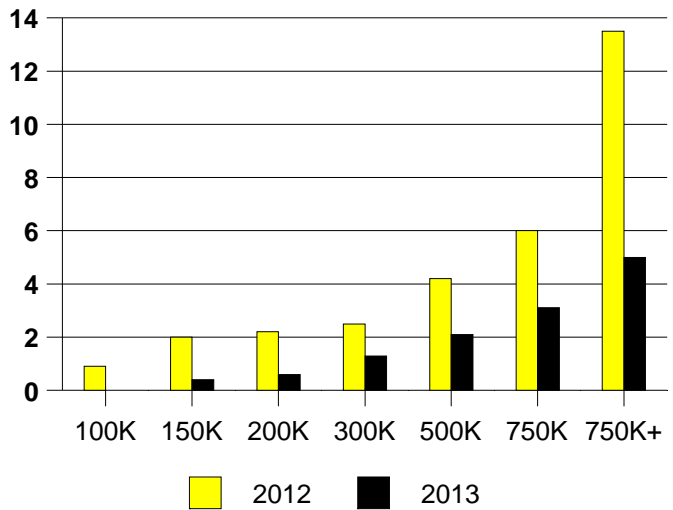
AVERAGE OVERPRICING
Original List Price to Sale Price

2012	5.7%
2013	3.5%

KELLER MONTHLY SALES



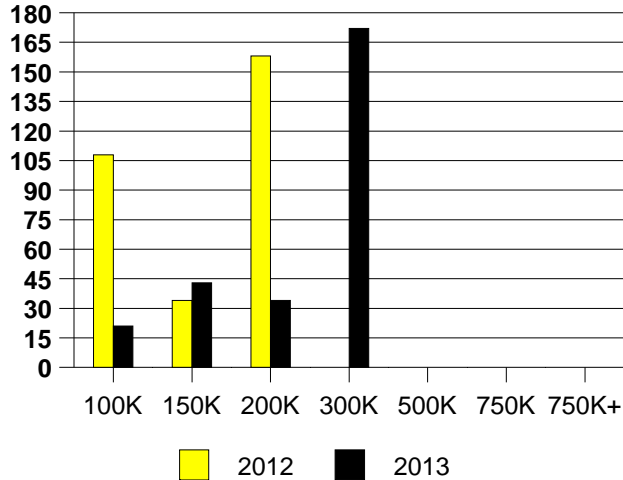
Inventory not shown where no sales
KELLER MONTHS OF INVENTORY



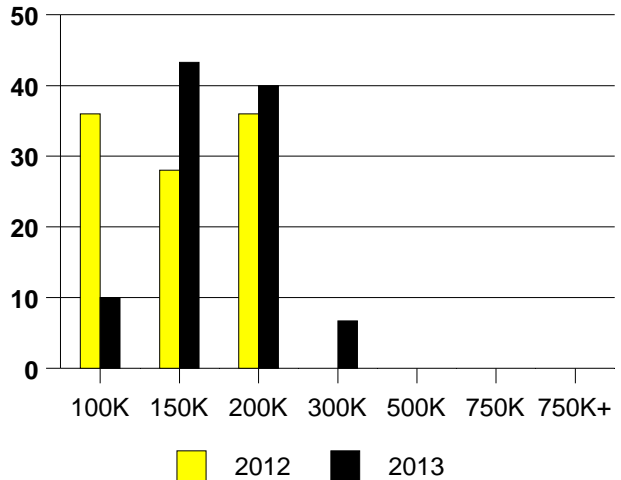
NTREIS Sold informaton as of 10/08/2013

	<u>2012</u>	<u>2013</u>
Total Sold Volume	\$ 3,096,900	\$ 4,403,100
Number of Sales	25	30
Median Sale Price	\$ 134,900	\$ 149,750

LAKE DALLAS DAYS ON THE MARKET



LAKE DALLAS MKT SHARE BY PRICE RANGE



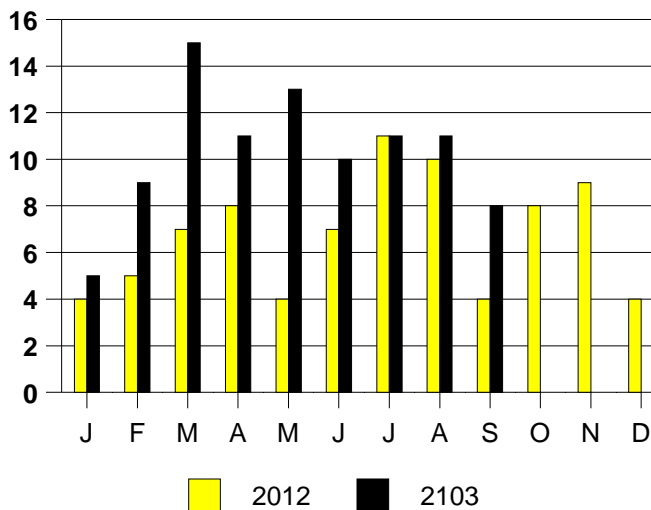
SALE/LIST PRICE RATIO

0K-100K	93.8%
101K-150K	99.6%
151K-200K	99.4%
201K-300K	93.6%
301K-500K	NONE
501K-750K	NONE
751K+	NONE

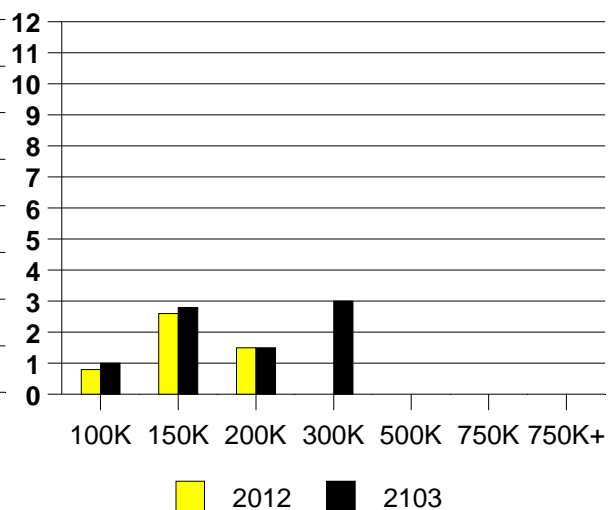
AVERAGE OVERPRICING
Original List Price to Sale Price

2012	5.9%
2013	2.2%

LAKE DALLAS MONTHLY SALES



LAKE DALLAS MONTHS OF INVENTORY

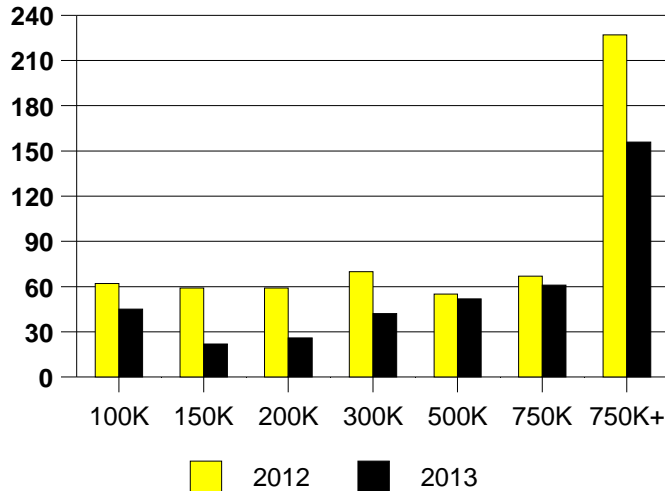


NTREIS Sold informaton as of 10/08/2013

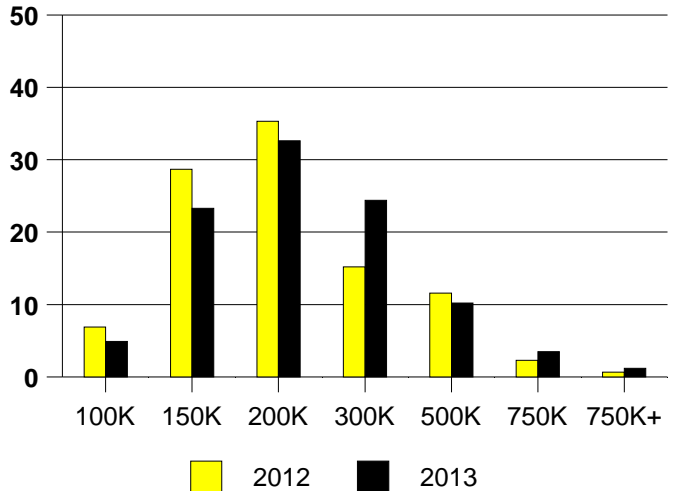
CHICAGO TITLE

	<u>2012</u>	<u>2013</u>
Total Sold Volume	\$ 62,533,665	\$ 76,211,655
Number of Sales	303	344
Median Sale Price	\$ 171,000	\$ 182,500

DAYS ON THE MARKET (LEWISVILLE)



LEWISVILLE MKT SHARE BY PRICE RANGE



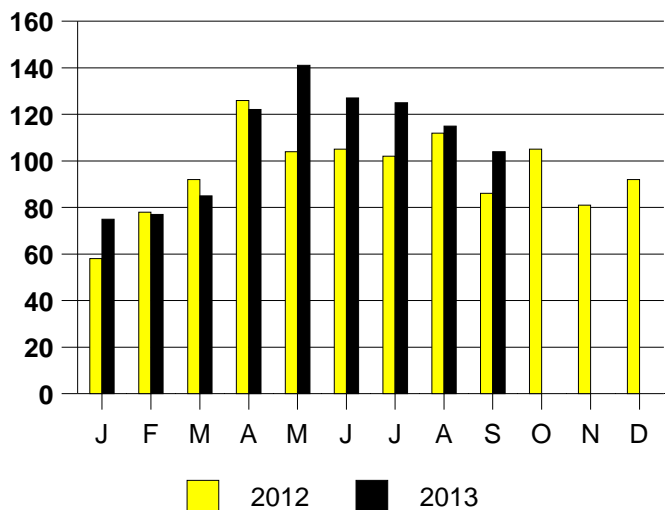
SALE/LIST PRICE RATIO

0K-100K	96.7%
101K-150K	98.8%
151K-200K	99.1%
201K-300K	98.7%
301K-500K	96.0%
501K-750K	98.7%
751K+	96.4%

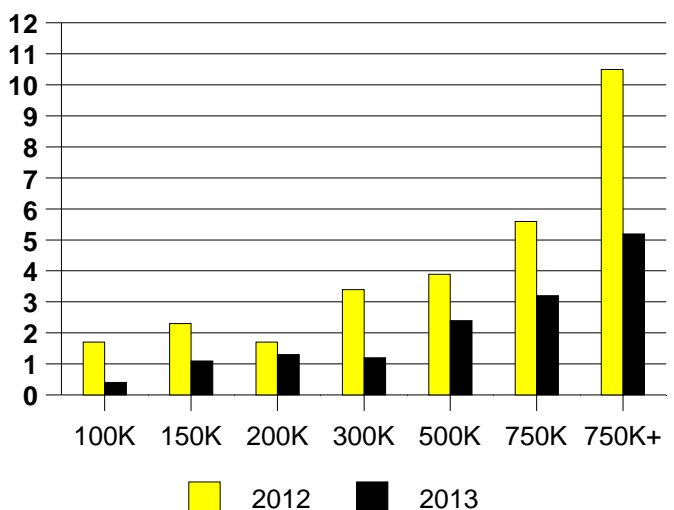
AVERAGE OVERPRICING
Original List Price to Sale Price

2012	4.3%
2013	2.5%

LEWISVILLE MONTHLY SALES

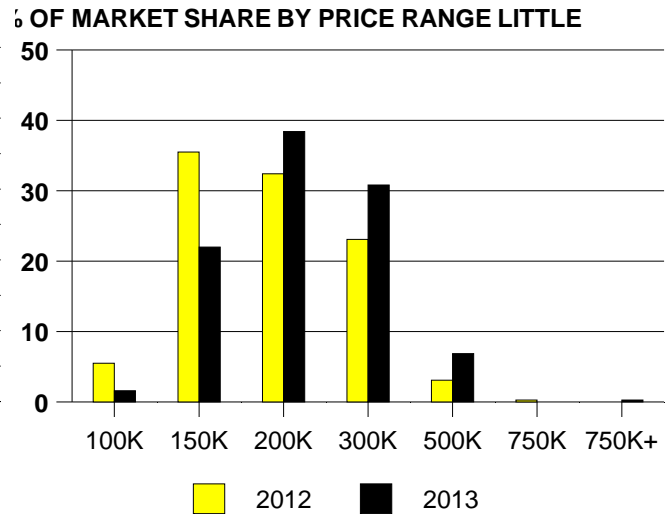
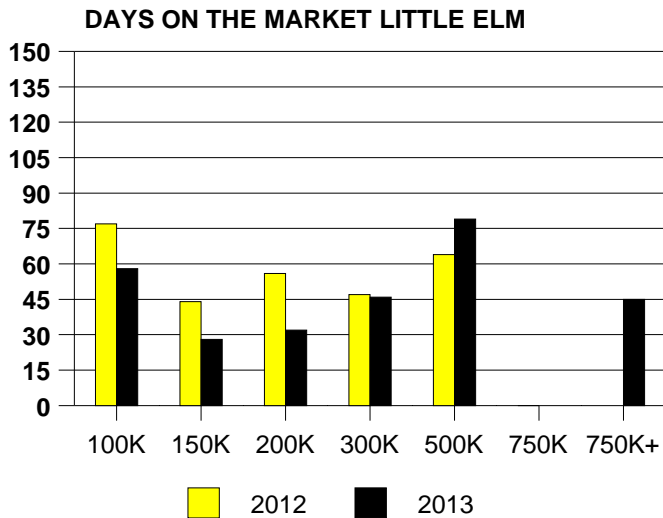


Inventory not shown where no sales
LEWISVILLE MONTHS OF INVENTORY



NTREIS Sold informaton as of 10/08/2013

	<u>2012</u>	<u>2013</u>
Total Sold Volume	\$ 50,385,978	\$ 60,691,582
Number of Sales	290	305
Median Sale Price	\$ 160,000	\$ 177,000



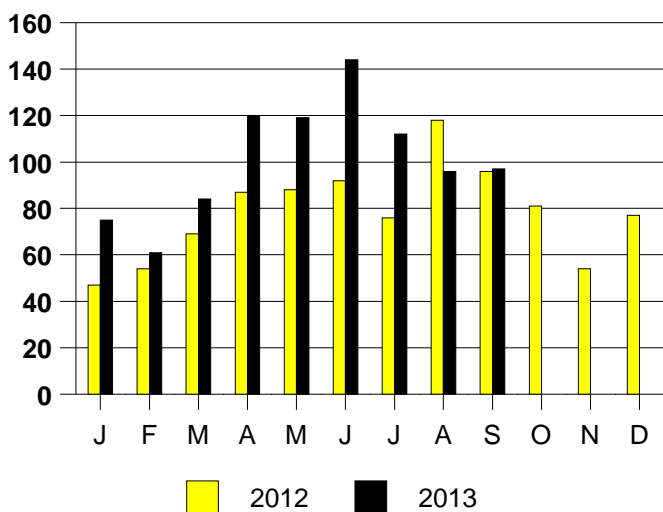
SALE/LIST PRICE RATIO

0K-100K	92.8%
101K-150K	99.3%
151K-200K	99.0%
201K-300K	98.6%
301K-500K	98.6%
501K-750K	NONE
751K+	92.9%

AVERAGE OVERPRICING
Original List Price to Sale Price

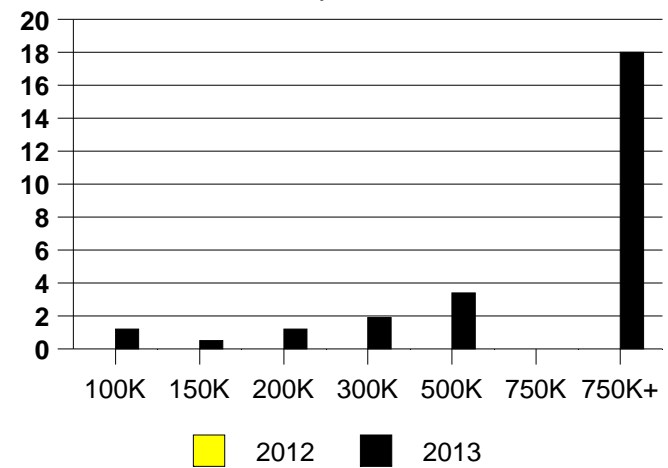
2012	4.5%
2013	2.2%

LITTLE ELM MONTHLY SALES



MONTHS OF INVENTORY LITTLE ELM

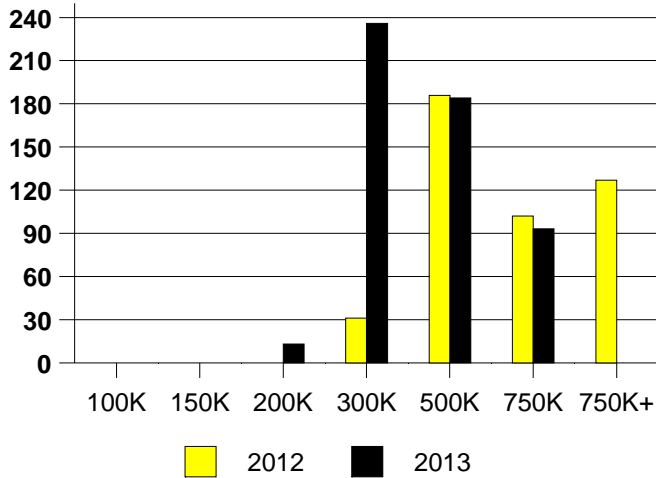
2012 Inventory not available



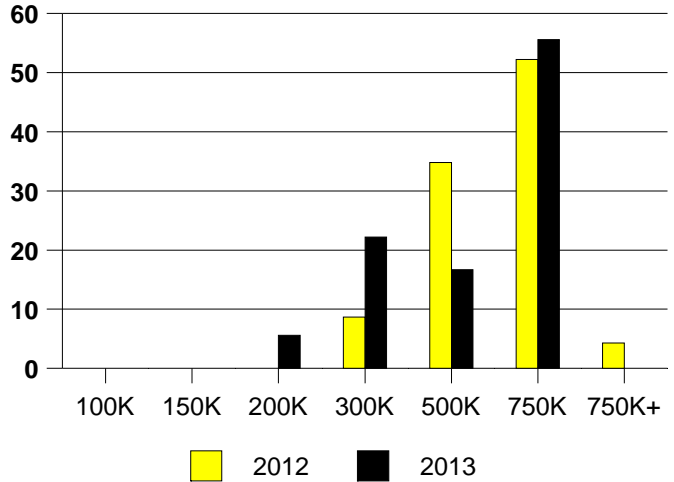
NTREIS Sold informaton as of 10/08/2013

	<u>2012</u>	<u>2013</u>
Total Sold Volume	\$ 11,546,168	\$ 8,416,000
Number of Sales	23	18
Median Sale Price	\$ 515,000	\$ 531,750

DAYS ON THE MARKET (LUCAS)



LUCAS MKT SHARE BY PRICE RANGE



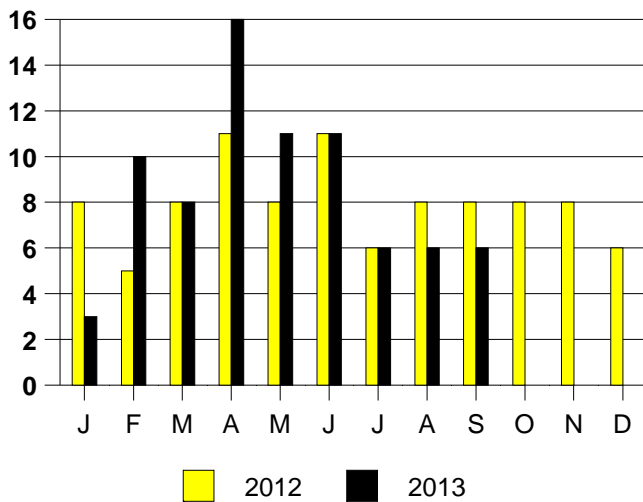
SALE/LIST PRICE RATIO

0K-100K	NONE
101K-150K	NONE
151K-200K	94.3%
201K-300K	96.3%
301K-500K	97.8%
501K-750K	97.0%
751K+	NONE

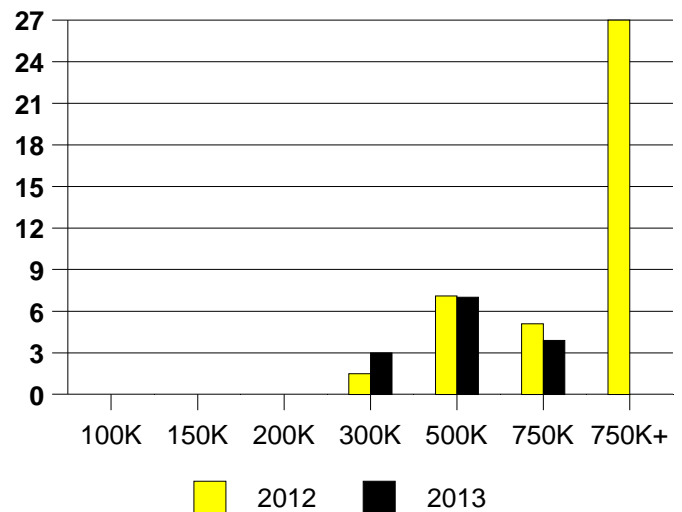
AVERAGE OVERPRICING
Original List Price to Sale Price

2012	6.0%
2013	5.0%

LUCAS MONTHLY SALES

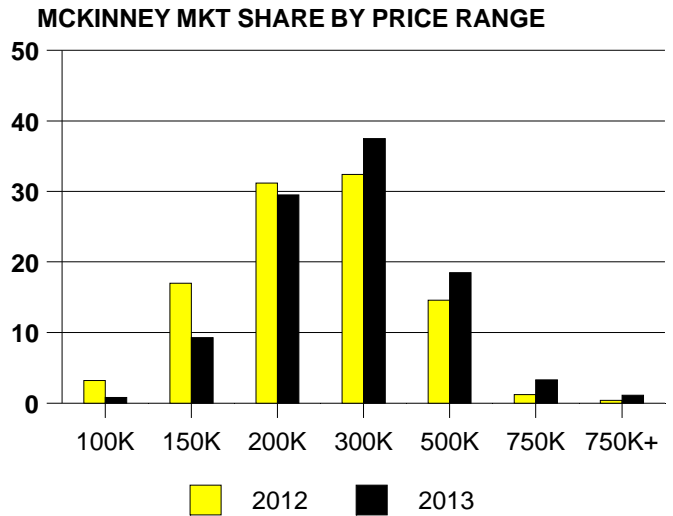
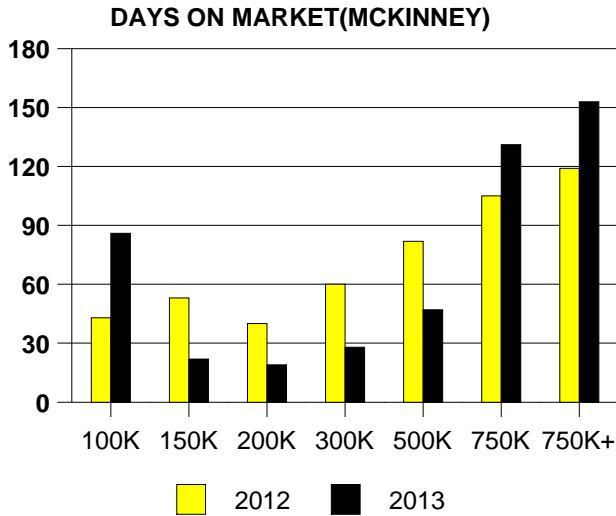


Inventory not shown where no sales
LUCAS MONTHS OF INVENTORY



NTREIS Sold informaton as of 10/08/2013

	<u>2012</u>	<u>2013</u>
Total Sold Volume	\$ 184,799,735	\$ 275,135,256
Number of Sales	817	1076
Median Sale Price	\$ 199,000	\$ 222,000



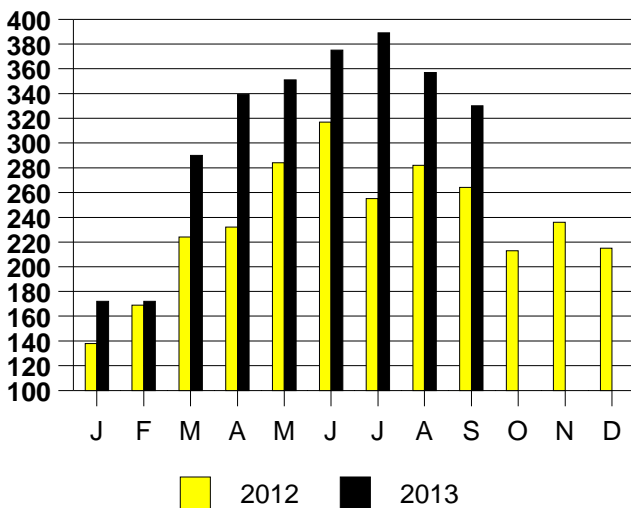
SALE/LIST PRICE RATIO

0K-100K	95.8%
101K-150K	99.0%
151K-200K	99.2%
201K-300K	98.8%
301K-500K	97.7%
501K-750K	97.8%
751K+	97.5%

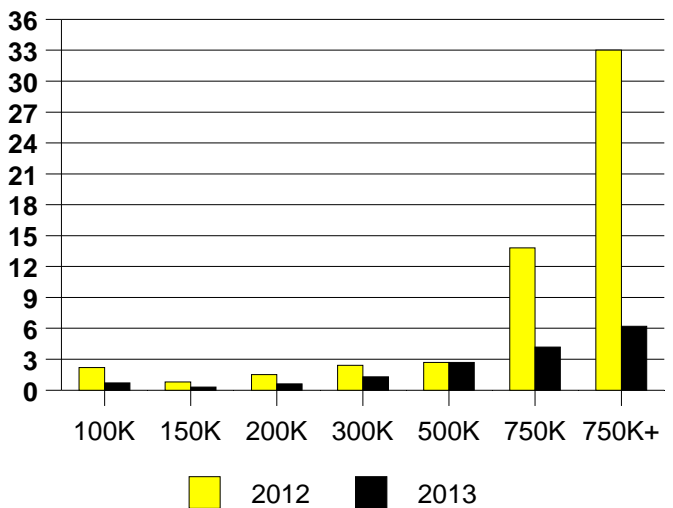
AVERAGE OVERPRICING
Original List Price to Sale Price

2012	4.3%
2013	2.4%

MCKINNEY MONTHLY SALES



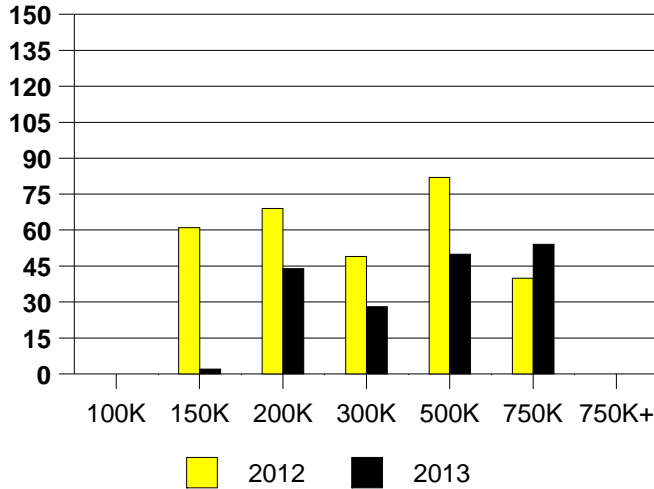
Inventory not shown where no sales
MCKINNEY MONTHS OF INVENTORY



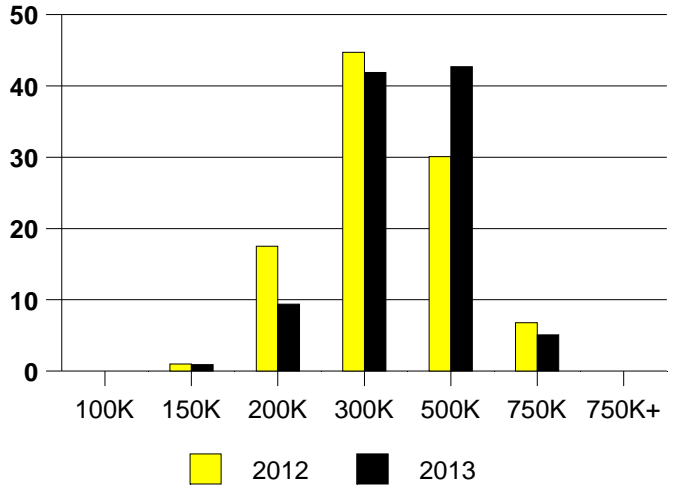
NTREIS Sold informaton as of 10/08/2013

	<u>2012</u>	<u>2013</u>
Total Sold Volume	\$30,590,953	\$ 36,975,538
Number of Sales	103	117
Median Sale Price	\$ 263,000	\$ 292,000

DAYS ON THE MARKET (MURPHY)



MURPHY MKT SHARE BY PRICE RANGE



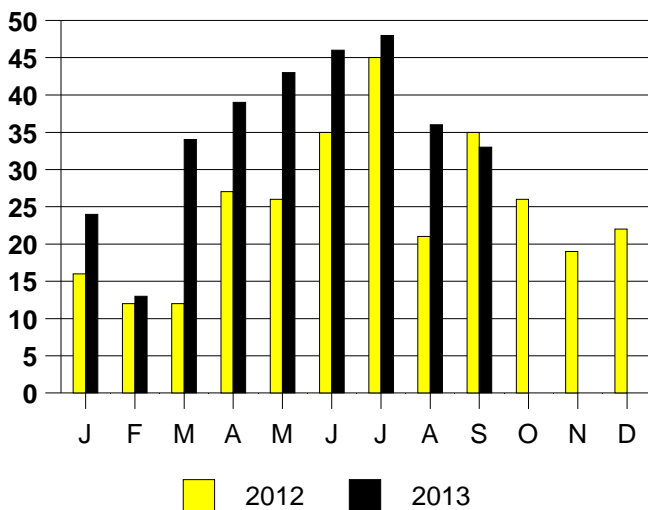
SALE/LIST PRICE RATIO

0K-100K	NONE
101K-150K	92.0%
151K-200K	98.0%
201K-300K	98.8%
301K-500K	97.2%
501K-750K	96.6%
751K+	NONE

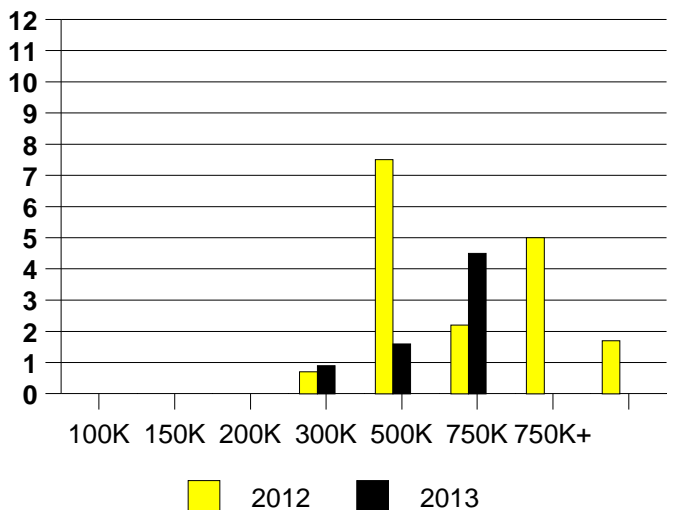
AVERAGE OVERPRICING
Original List Price to Sale Price

2012	4.9%
2013	3.4%

MURPHY MONTHLY SALES



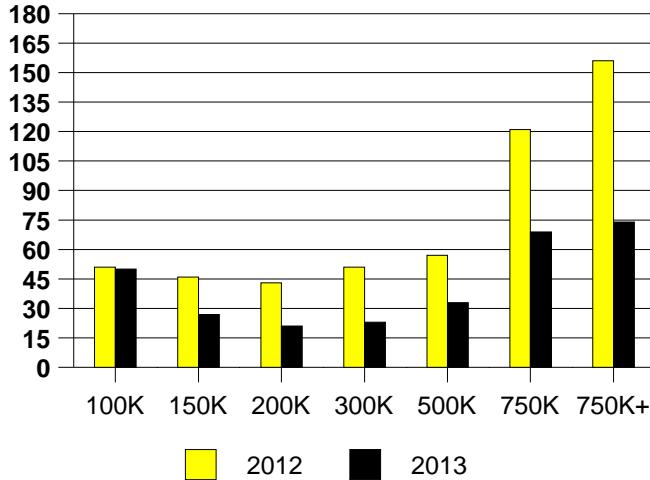
Inventory not shown where no sales
MURPHY MONTHS OF INVENTORY



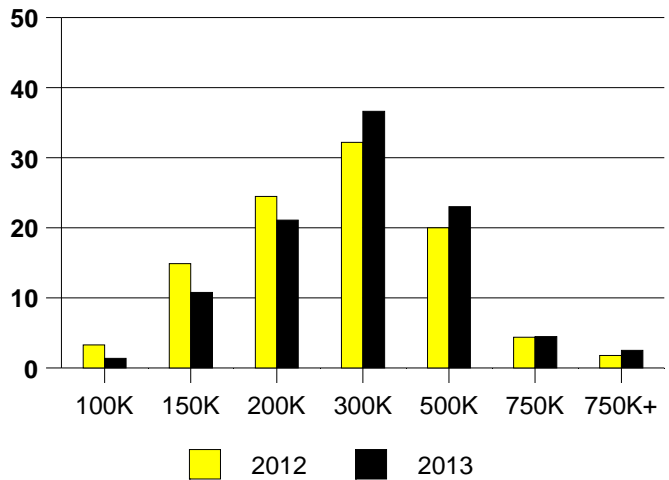
NTREIS Sold informaton as of 10/08/2013

	<u>2012</u>	<u>2013</u>
Total Sold Volume	\$ 232,941,631	\$ 315,367,734
Number of Sales	891	1102
Median Sale Price	\$ 220,000	\$ 240,000

DAYS ON MARKET(PLANO)



PLANO MKT SHARE BY PRICE RANGE



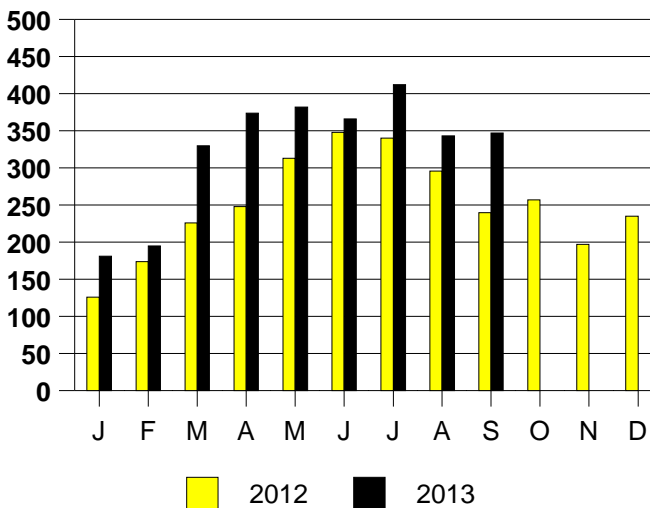
SALE/LIST PRICE RATIO

0K-100K	95.6%
101K-150K	98.3%
151K-200K	98.9%
201K-300K	99.3%
301K-500K	98.5%
501K-750K	97.5%
751K+	95.9%

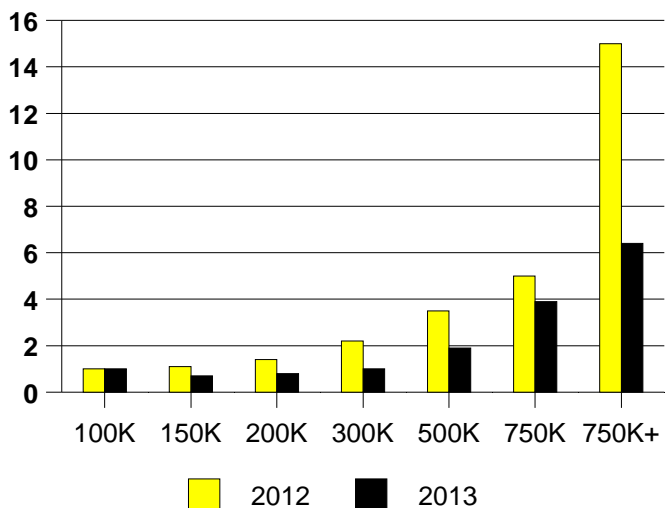
AVERAGE OVERPRICING
Original List Price to Sale Price

2012	4.8%
2013	2.4%

PLANO MONTHLY SALES



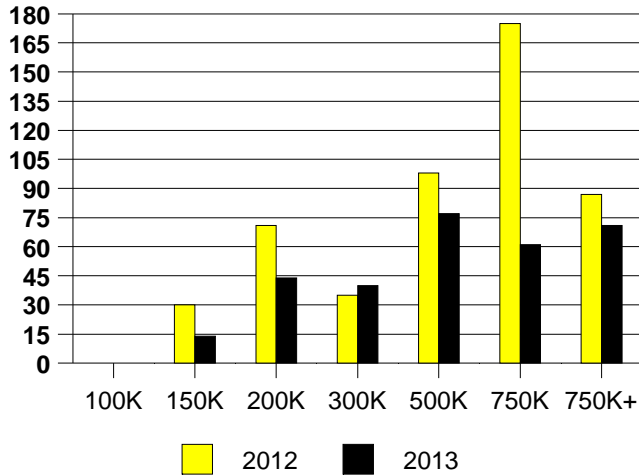
Inventory not shown where no sales
PLANO MONTHS OF INVENTORY



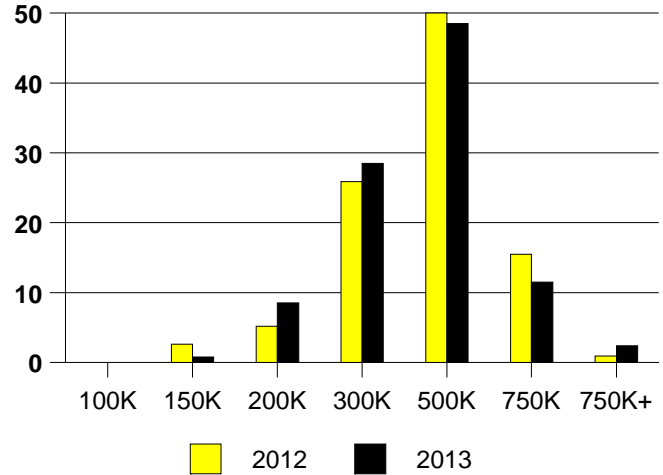
NTREIS Sold informaton as of 10/08/2013

	<u>2012</u>	<u>2013</u>
Total Sold Volume	\$ 41,779,436	\$ 49,111,853
Number of Sales	116	130
Median Sale Price	\$ 321,250	\$ 350,872

PROSPER DAYS ON THE MARKET



PROSPER MARKET SHARE BY PRICE RANGE



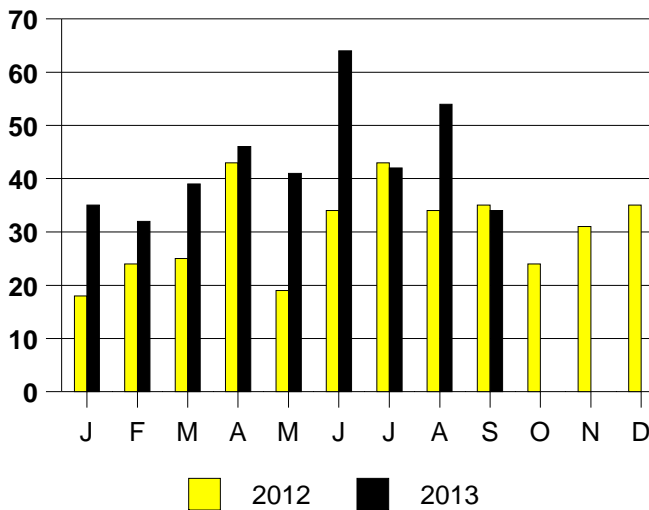
SALE/LIST PRICE RATIO

0K-100K	NONE
101K-150K	102.1%
151K-200K	96.6%
201K-300K	97.5%
301K-500K	97.4%
501K-750K	97.8%
751K+	93.5%

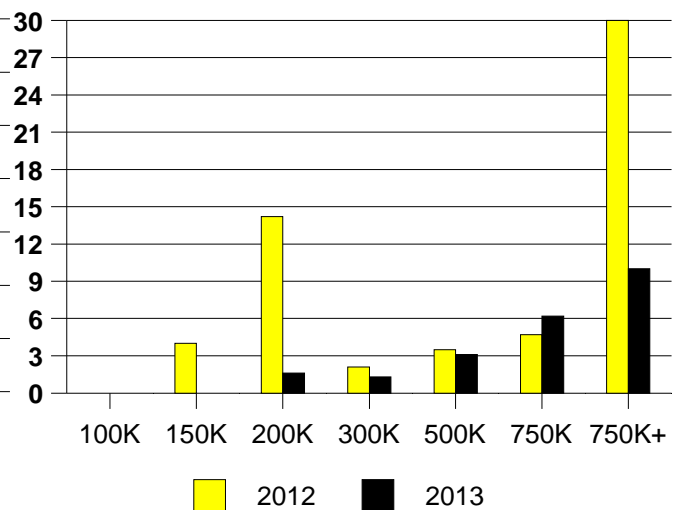
AVERAGE OVERPRICING
Original List Price to Sale Price

2012	6.5%
2013	4.2%

PROSPER MONTHLY SALES

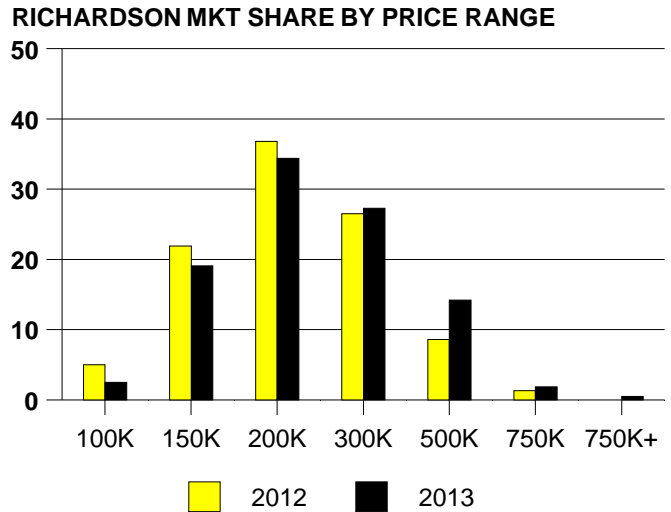
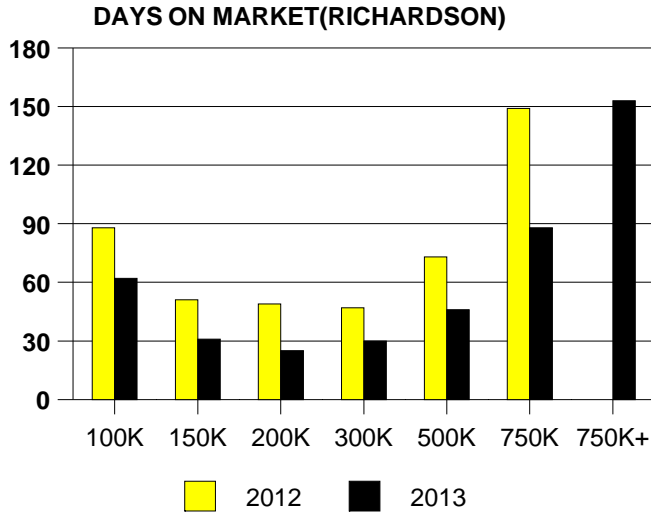


Inventory not shown where no sales
PROSPER MONTHS OF INVENTORY



NTREIS Sold informaton as of 10/08/2013

	<u>2012</u>	<u>2013</u>
Total Sold Volume	\$ 60,941,767	\$ 81,893,494
Number of Sales	302	366
Median Sale Price	\$ 178,550	\$ 192,250



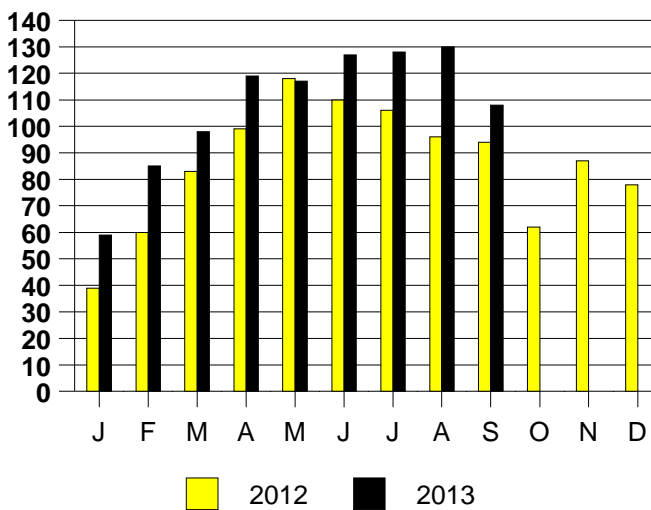
SALE/LIST PRICE RATIO

0K-100K	94.6%
101K-150K	98.1%
151K-200K	98.9%
201K-300K	98.3%
301K-500K	98.4%
501K-750K	97.0%
751K+	95.1%

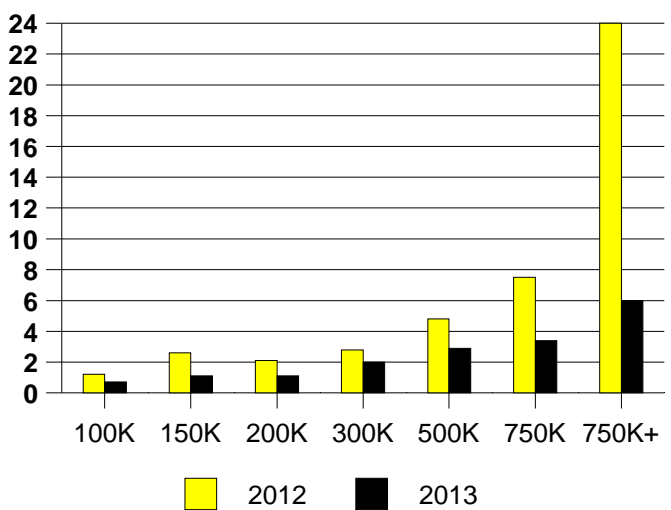
AVERAGE OVERPRICING
Original List Price to Sale Price

2012	5.5%
2013	3.4%

RICHARDSON MONTHLY SALES



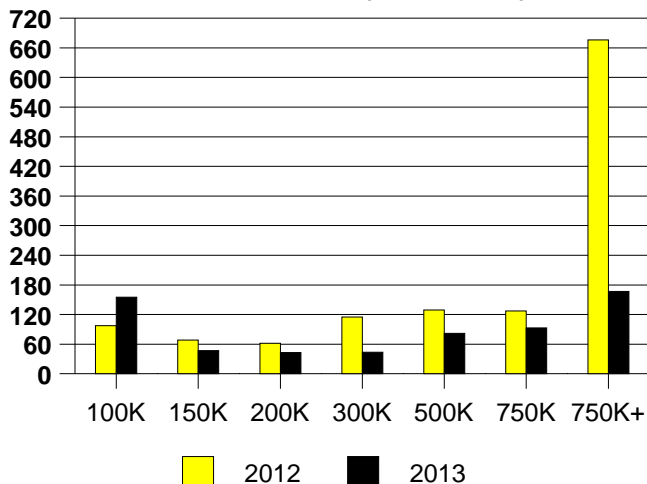
RICHARDSON MONTHS OF INVENTORY



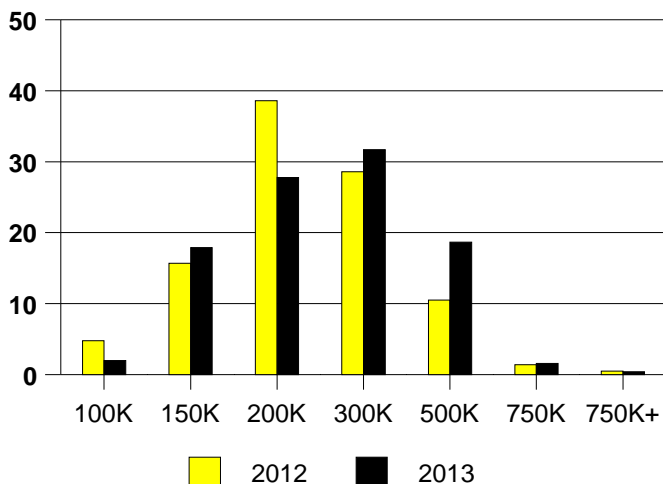
NTREIS Sold informaton as of 10/08/2013

	<u>2012</u>	<u>2013</u>
Total Sold Volume	\$ 44,073,807	\$ 59,215,563
Number of Sales	210	252
Median Sale Price	\$ 182,500	\$ 210,000

DAYS ON THE MARKET (ROCKWALL)



ROCKWALL MKT SHARE BY PRICE RANGE



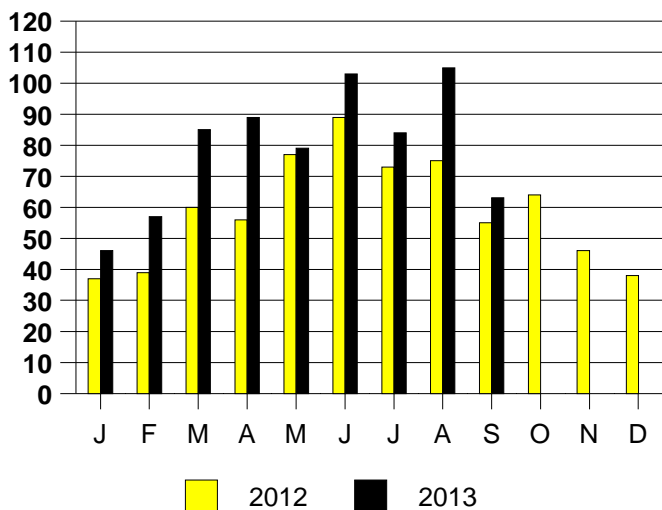
SALE/LIST PRICE RATIO

0K-100K	95.4%
101K-150K	96.2%
151K-200K	97.6%
201K-300K	97.6%
301K-500K	97.4%
501K-750K	100.5%
751K+	100.0%

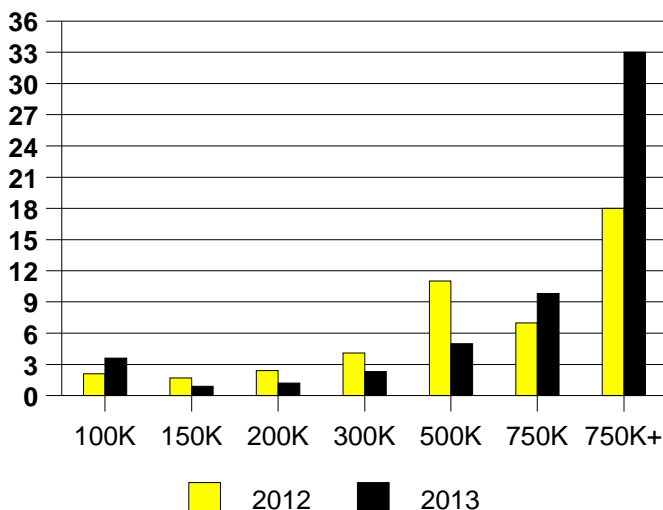
AVERAGE OVERPRICING
Original List Price to Sale Price

2012	7.4%
2013	4.9%

ROCKWALL MONTHLY SALES



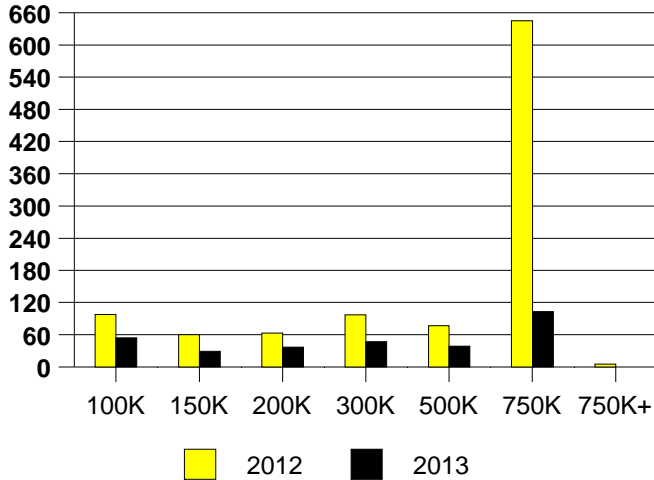
Inventory not shown where no sales
ROCKWALL MONTHS OF INVENTORY



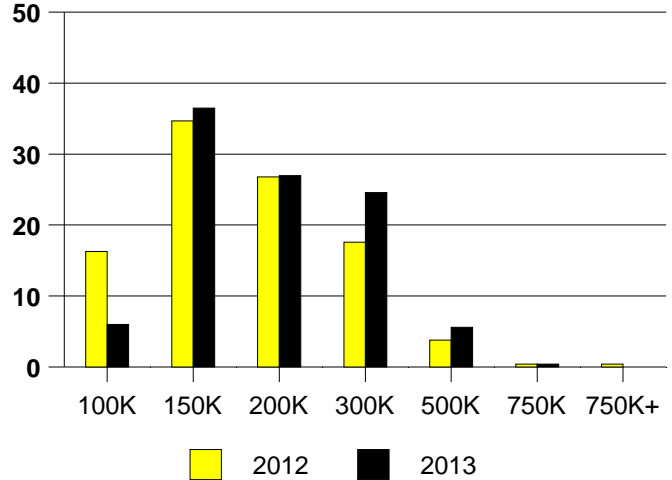
NTREIS Sold informaton as of 10/08/2013

	<u>2012</u>	<u>2013</u>
Total Sold Volume	\$ 38,803,922	\$ 50,828,962
Number of Sales	239	285
Median Sale Price	\$ 148,000	\$ 164,900

DAYS ON THE MARKET (ROWLETT)



ROWLETT MKT SHARE BY PRICE RANGE



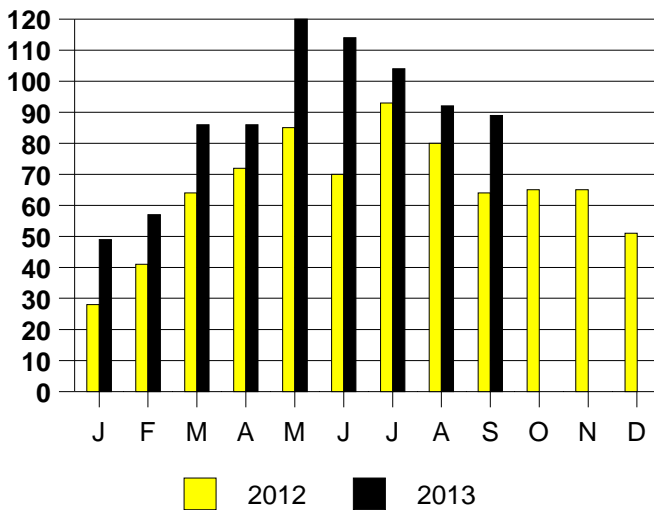
SALE/LIST PRICE RATIO

0K-100K	95.8%
101K-150K	98.6%
151K-200K	98.5%
201K-300K	99.3%
301K-500K	97.0%
501K-750K	97.1%
751K+	NONE

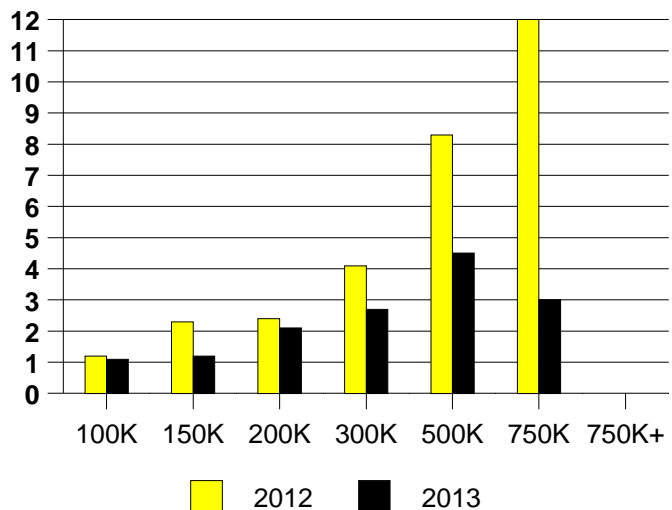
AVERAGE OVERPRICING
Original List Price to Sale Price

2012	6.4%
2013	3.1%

ROWLETT MONTHLY SALES



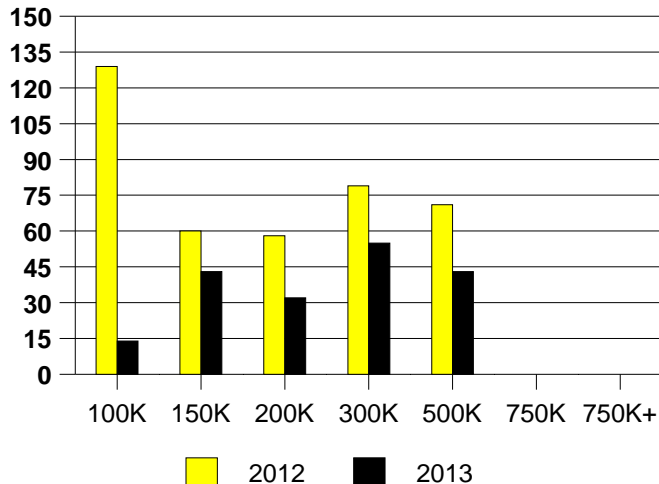
Inventory not shown where no sales
ROWLETT MONTHS OF INVENTORY



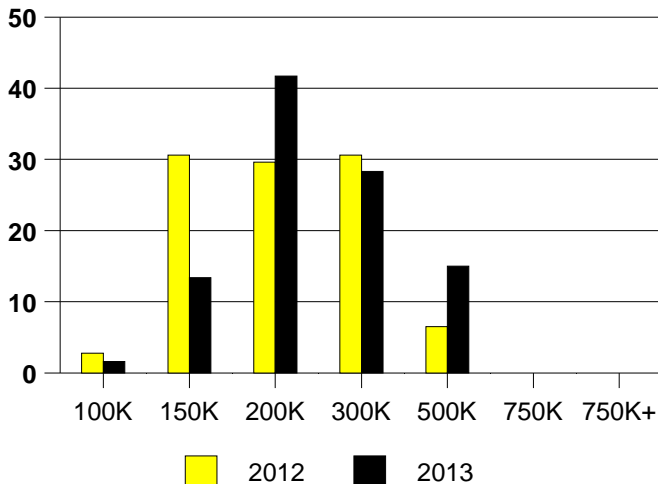
NTREIS Sold informaton as of 10/08/2013

	<u>2012</u>	<u>2013</u>
Total Sold Volume	\$ 20,777,716	\$ 27,106,533
Number of Sales	108	127
Median Sale Price	\$ 166,000	\$ 189,000

DAYS ON THE MARKET (SACHSE)



SACHSE MKT SHARE BY PRICE RANGE



SALE/LIST PRICE RATIO

0K-100K	93.3%
101K-150K	99.0%
151K-200K	98.6%
201K-300K	97.2%
301K-500K	96.4%
501K-750K	NONE
751K+	NONE

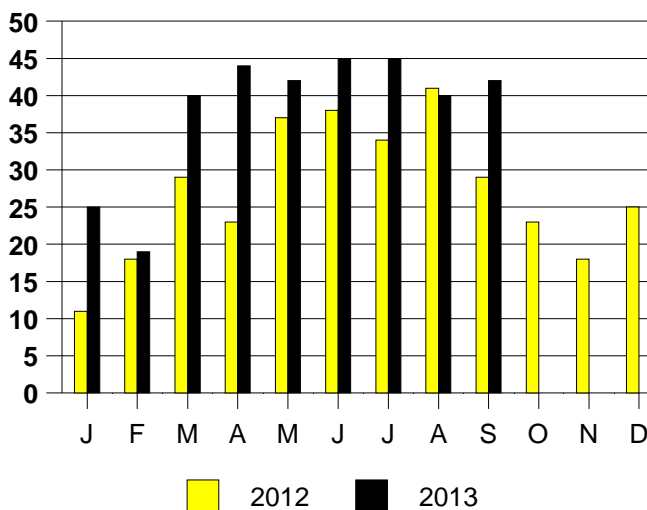
AVERAGE OVERPRICING

Original List Price to Sale Price

2012 5.5%

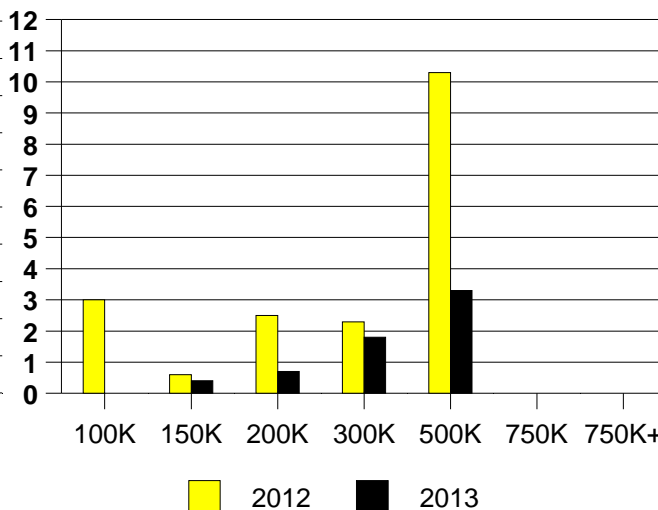
2013 3.9%

SACHSE MONTHLY SALES



Inventory not shown where no sales

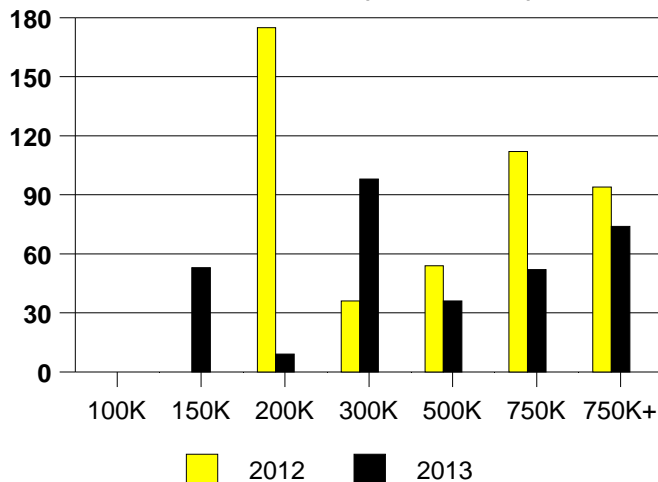
SACHSE MONTHS OF INVENTORY



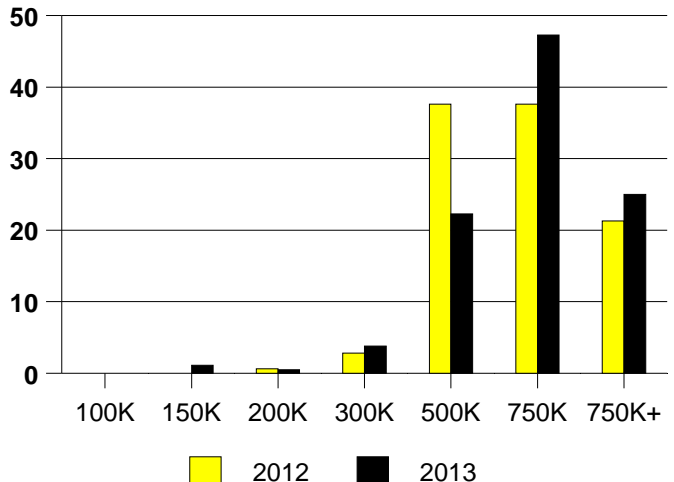
NTREIS Sold informaton as of 10/08/2013

	<u>2012</u>	<u>2013</u>
Total Sold Volume	\$ 110,695,713	\$ 122,479,635
Number of Sales	178	184
Median Sale Price	\$ 557,000	\$ 600,700

DAYS ON THE MARKET (SOUTHLAKE)



SOUTHLAKE MKT SHARE BY PRICE RANGE



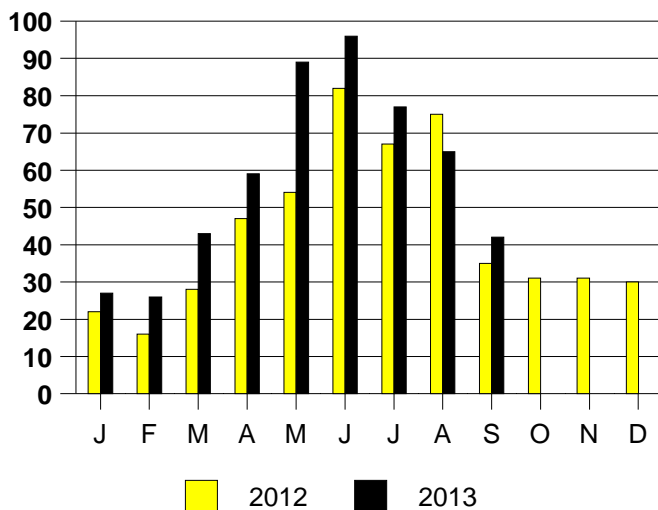
SALE/LIST PRICE RATIO

0K-100K	NONE
101K-150K	83.2%
151K-200K	89.0%
201K-300K	97.3%
301K-500K	97.9%
501K-750K	97.9%
751K+	96.6%

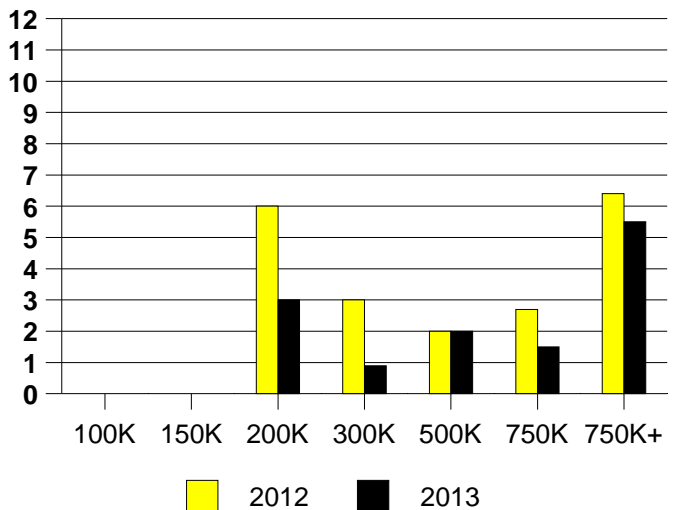
AVERAGE OVERPRICING
Original List Price to Sale Price

2012	5.6%
2013	6.0%

SOUTHLAKE MONTHLY SALES



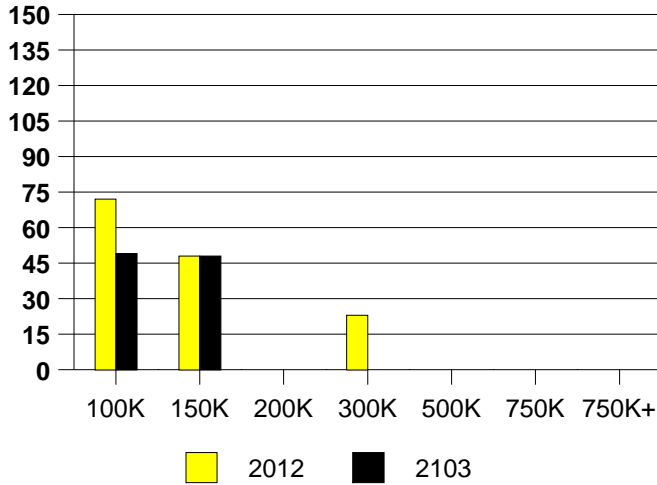
Inventory not shown where no sales
SOUTHLAKE MONTHS OF INVENTORY



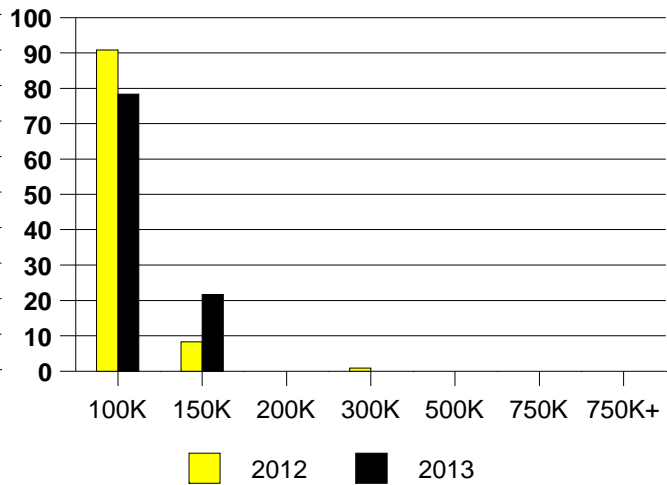
NTREIS Sold informaton as of 10/08/2013

	<u>2012</u>	<u>2013</u>
Total Sold Volume	\$6,770,890	\$ 6,152,613
Number of Sales	109	83
Median Sale Price	\$ 57,500	\$ 70,000

DAYS ON THE MARKET (OAK CLIFF)



OAK CLIFF MKT SHARE BY PRICE RANGE



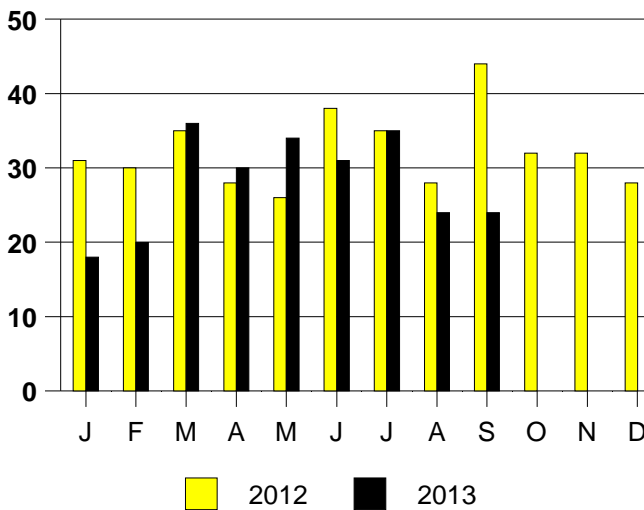
SALE/LIST PRICE RATIO

0K-100K	105.0%
101K-150K	98.5%
151K-200K	NONE
201K-300K	NONE
301K-500K	NONE
501K-750K	NONE
751K+	NONE

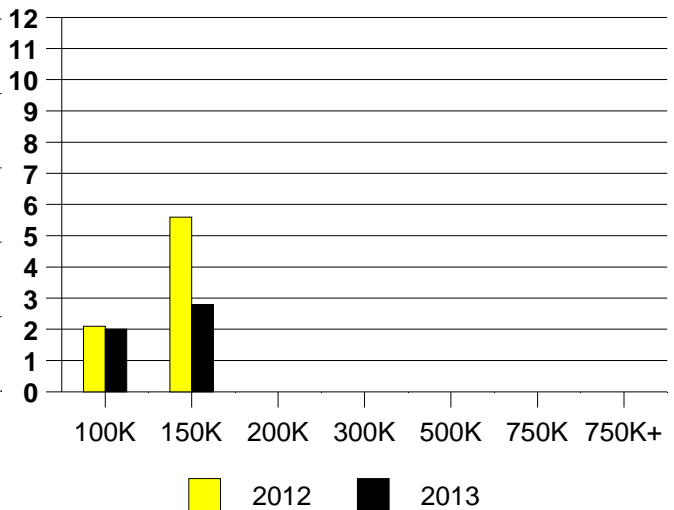
AVERAGE OVERPRICING
Original List Price to Sale Price

2012	7.0%
2013	-1.1%

OAK CLIFF MONTHLY SALES



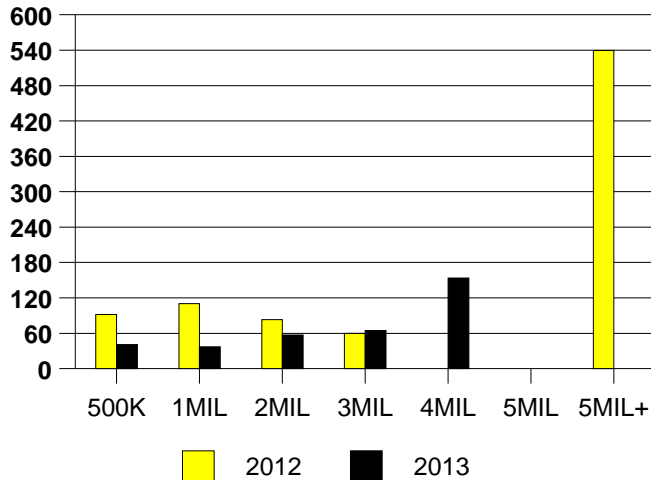
Inventory not shown where no sales
OAK CLIFF MONTHS OF INVENTORY



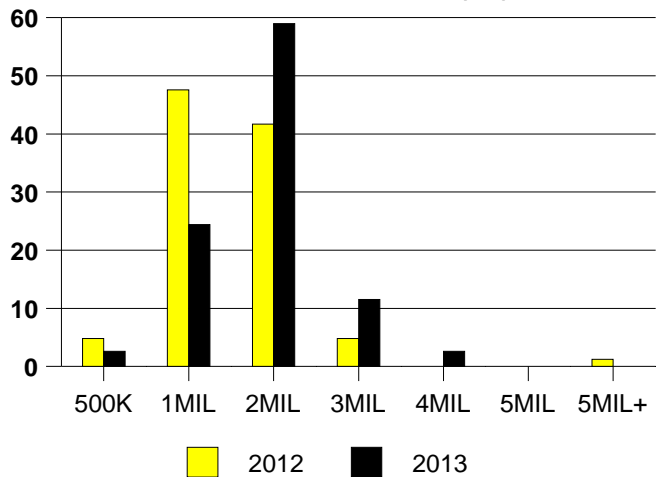
NTREIS Sold informaton as of 10/08/2013

	<u>2012</u>	<u>2013</u>
Total Sold Volume	\$ 97,152,756	\$ 106,734,853
Number of Sales	84	78
Median Sale Price	\$ 971,700	\$ 1,295,500

DAYS ON THE MARKET (UNIV PARK)



MKT SHARE BY PRICE RANGE(UP)



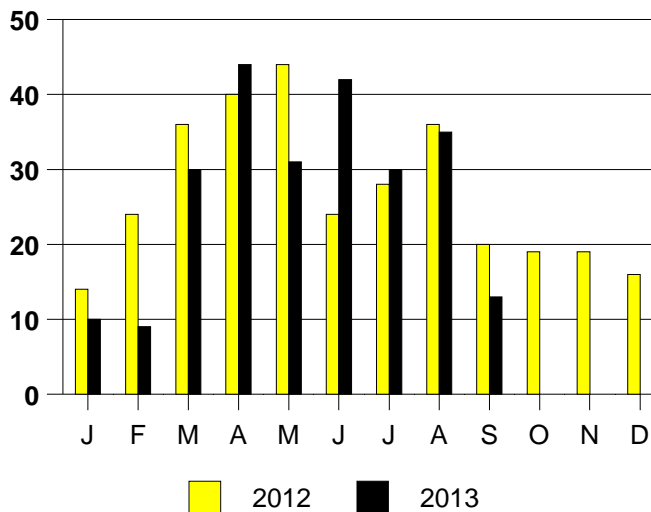
SALE/LIST PRICE RATIO

0K-500K	94.6%
501K-1MIL	96.4%
1MIL-2MIL	97.0%
2MIL-3MIL	95.3%
3MIL-4MIL	96.8%
4MIL-5MIL	NONE
5MIL+	NONE

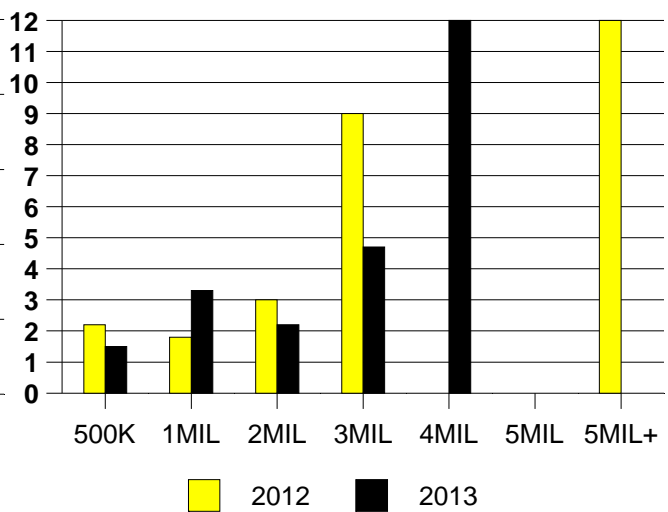
AVERAGE OVERPRICING

Orig List Price to Sale Price	
2012	8.2%
2013	5.9%

UNIVERSITY PARK MONTHLY SALES



**Inventory not shown where no sales
UNIV PARK MONTHS OF INVENTORY**

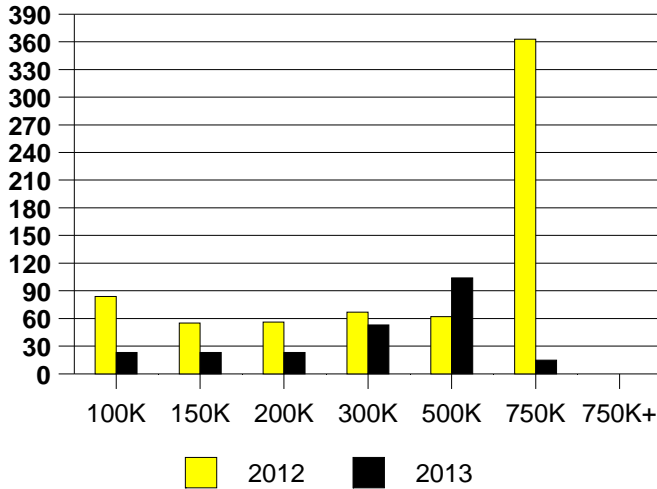


NTREIS Sold information as of 10/08/2013

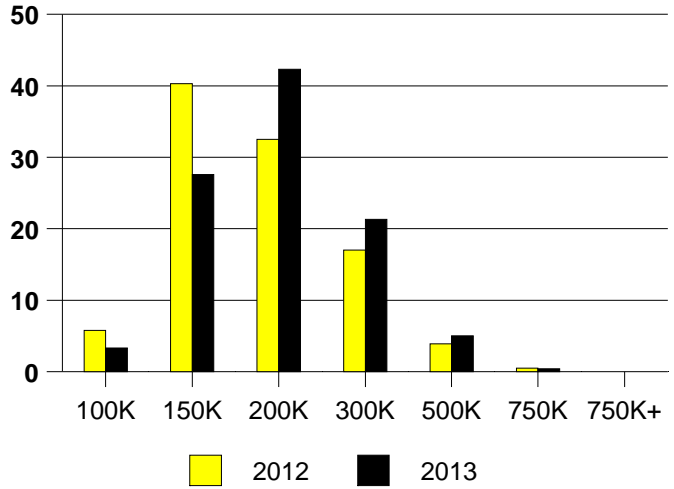
CHICAGO TITLE

	<u>2012</u>	<u>2013</u>
Total Sold Volume	\$ 34,670,065	\$ 43,754,265
Number of Sales	206	239
Median Sale Price	\$ 155,750	\$ 169,250

DAYS ON THE MARKET (WYLIE)



WYLIE MKT SHARE BY PRICE RANGE



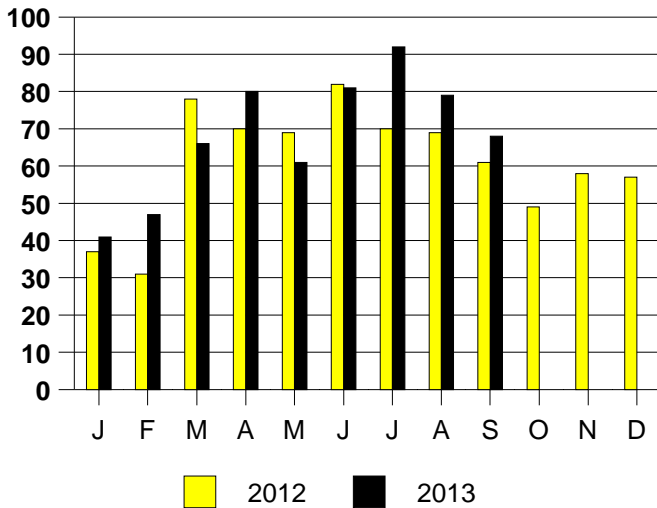
SALE/LIST PRICE RATIO

0K-100K	94.5%
101K-150K	98.5%
151K-200K	99.0%
201K-300K	98.5%
301K-500K	97.5%
501K-750K	97.3%
751K+	NONE

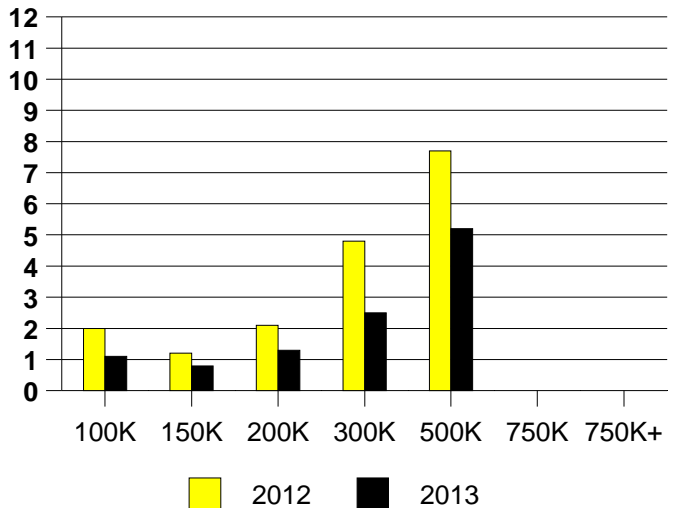
AVERAGE OVERPRICING
Original List Price to Sale Price

2012	5.6%
2013	2.6%

WYLIE MONTHLY SALES



Inventory not shown where no sales
WYLIE MONTHS OF INVENTORY



NTREIS Sold informaton as of 10/08/2013