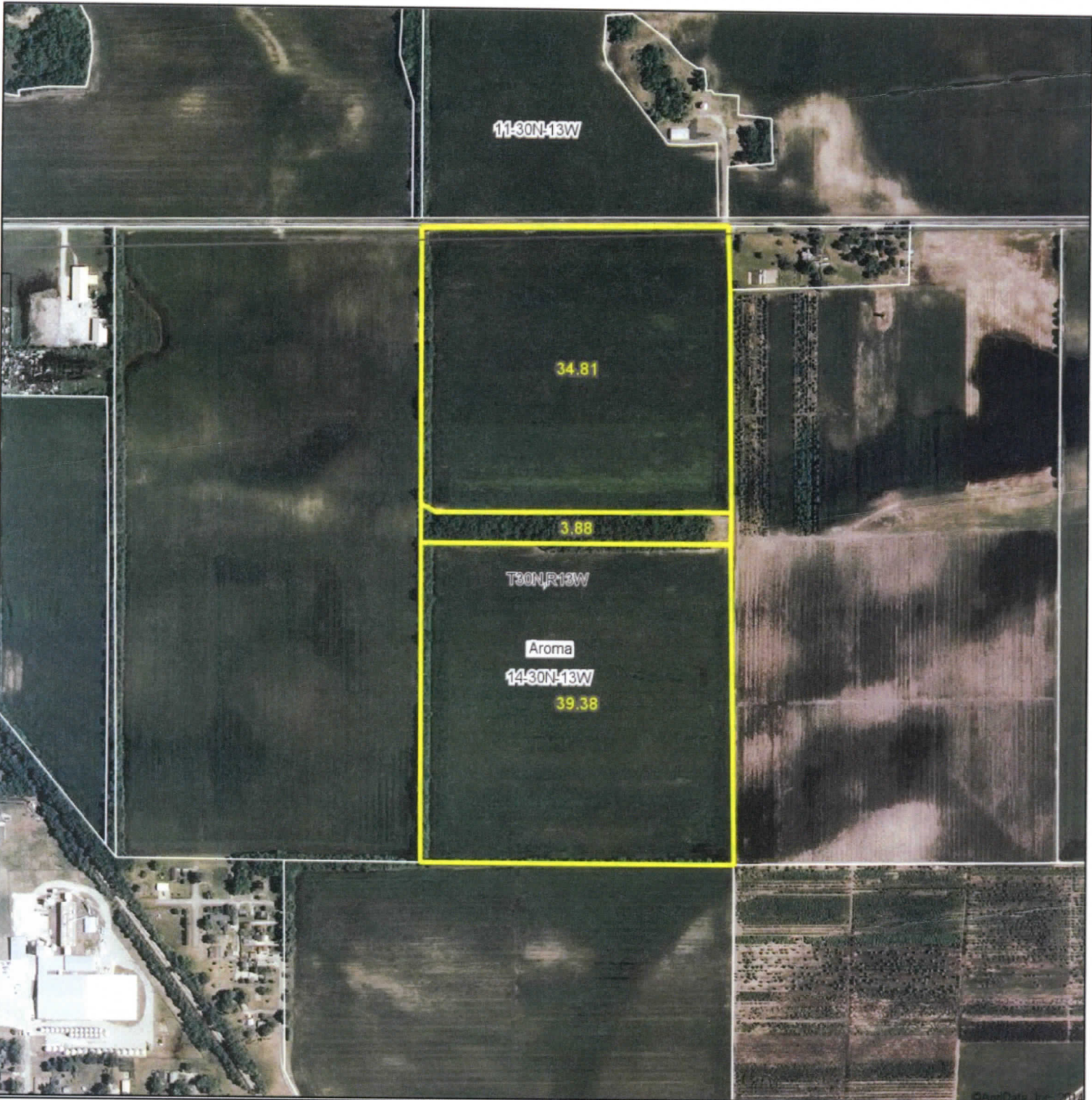


# Aerial Map



map center: 41° 5' 18.4, 87° 48' 7.47

scale: 7426



4/21/2014

14-30N-13W  
Kankakee County  
Illinois



Field borders provided by Farm Service Agency as of 5/21/2008. Aerial photography provided by Aerial Photography Field Office.

ANKAKEE NORTHWEST PART AROMA T.30-31N.-R.11-12E.-14-13M

1000W 0000E 1000E 2000E 3000E 4000E 5000E

SEE PAGE 24 SEE PAGE 23

R.11E. R.12E. R.13W. R.14W. R.15W.

87 54' 87 53' 87 52' 87 51' SEE PAGE 14 87 50' 87 49' 87 48'

AROMA TWP. KANKAKEE TWP. AROMA TWP.

1000W 0000E 1000E 2000E 3000E 4000E 5000E

SEE PAGE 24 SEE PAGE 23

R.11E. R.12E. R.13W. R.14W. R.15W.

87 54' 87 53' 87 52' 87 51' SEE PAGE 14 87 50' 87 49' 87 48'

AROMA TWP. KANKAKEE TWP. AROMA TWP.

1000W 0000E 1000E 2000E 3000E 4000E 5000E

SEE PAGE 24 SEE PAGE 23

R.11E. R.12E. R.13W. R.14W. R.15W.

87 54' 87 53' 87 52' 87 51' SEE PAGE 14 87 50' 87 49' 87 48'

AROMA TWP. KANKAKEE TWP. AROMA TWP.

1000W 0000E 1000E 2000E 3000E 4000E 5000E

SEE PAGE 24 SEE PAGE 23

R.11E. R.12E. R.13W. R.14W. R.15W.

87 54' 87 53' 87 52' 87 51' SEE PAGE 14 87 50' 87 49' 87 48'

AROMA TWP. KANKAKEE TWP. AROMA TWP.

1000W 0000E 1000E 2000E 3000E 4000E 5000E

SEE PAGE 24 SEE PAGE 23

R.11E. R.12E. R.13W. R.14W. R.15W.

87 54' 87 53' 87 52' 87 51' SEE PAGE 14 87 50' 87 49' 87 48'

AROMA TWP. KANKAKEE TWP. AROMA TWP.

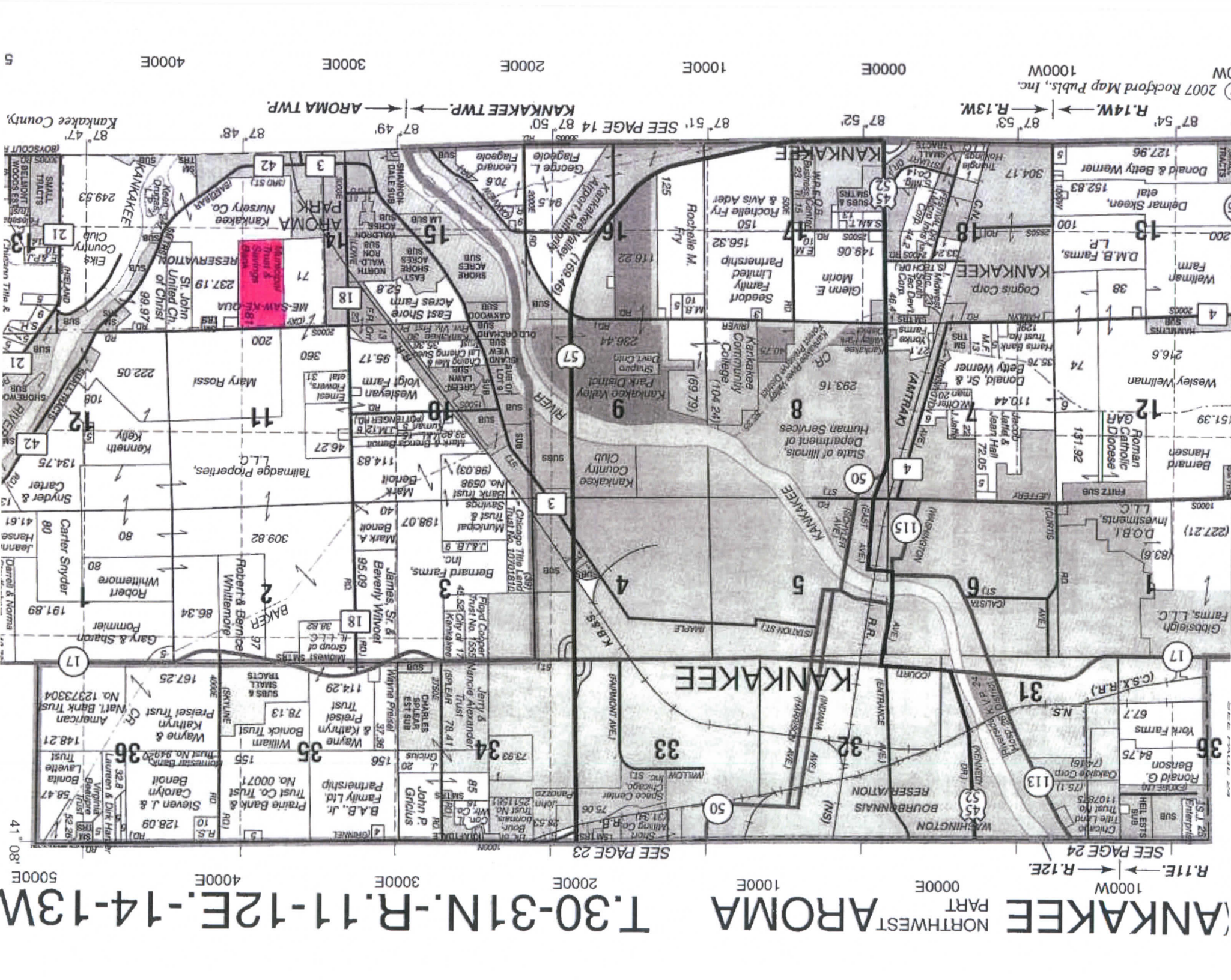
1000W 0000E 1000E 2000E 3000E 4000E 5000E

SEE PAGE 24 SEE PAGE 23

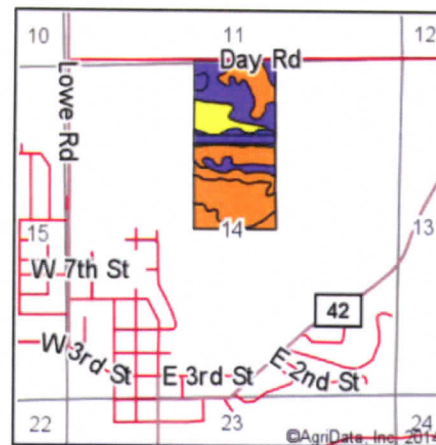
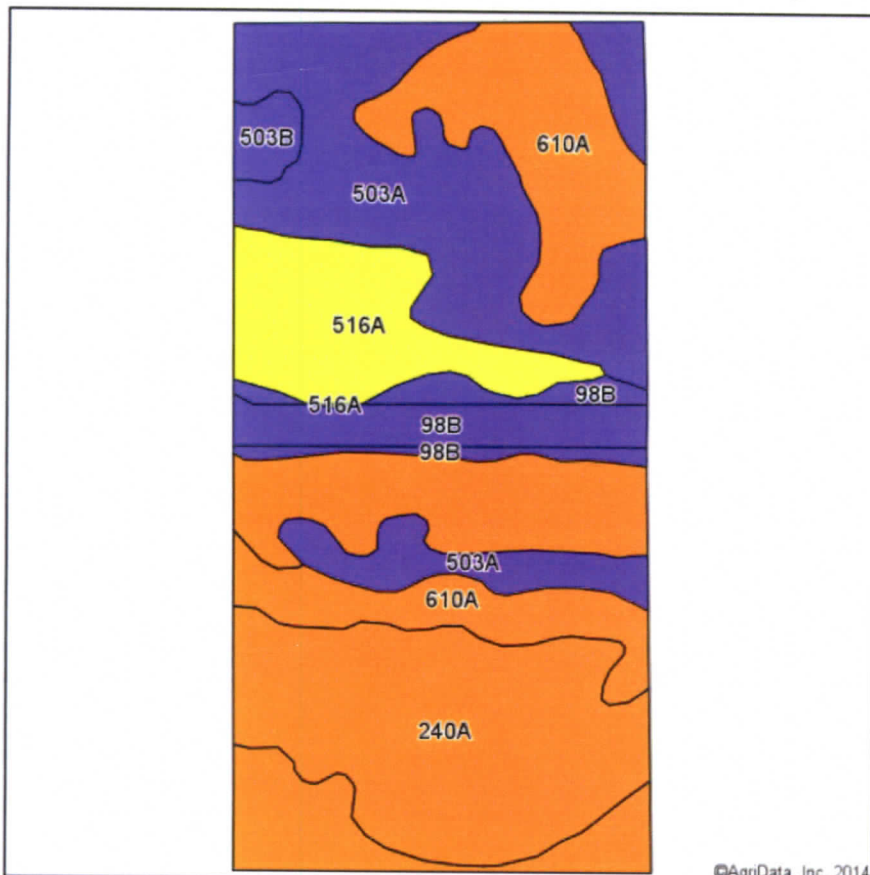
R.11E. R.12E. R.13W. R.14W. R.15W.

87 54' 87 53' 87 52' 87 51' SEE PAGE 14 87 50' 87 49' 87 48'

AROMA TWP. KANKAKEE TWP. AROMA TWP.



# Soil Map



State: Illinois  
 County: Kankakee  
 Location: 14-30N-13W  
 Township: Aroma  
 Acres: 78.07  
 Date: 4/21/2014



Maps Provided By:  
**surety**  
 CUSTOMIZED ONLINE MAPPING  
 © AgriData, Inc. 2014 www.AgriDataInc.com

Soils data provided by USDA and NRCS.

Area Symbol: IL091, Soil Area Version: 9

Code	Soil Description	Acres	Percent of field	Il. State Productivity Index Legend	Subsoil rooting <sup>a</sup>	Corn Bu/A	Soybeans Bu/A	Wheat Bu/A	Oats Bu/A <sup>b</sup>	Sorghum <sup>c</sup> Bu/A	Alfalfa <sup>d</sup> hay, T/A	Grass-legume <sup>e</sup> hay, T/A	Crop productivity index for optimum management
240A	Plattville silt loam, 0 to 2 percent slopes	25.15	32.2%		FAV	161	52	65	89	0	5.02	0.00	120
610A	Tallmadge sandy loam, 0 to 2 percent slopes	18.77	24.0%		FAV	166	54	64	85	0	0.00	5.02	123
503A	Rockton silt loam, 0 to 2 percent slopes	18.68	23.9%		FAV	134	45	59	75	0	3.89	0.00	101
516A	Faxon silt loam, 0 to 2 percent slopes	8.00	10.2%		FAV	154	51	59	82	0	0.00	4.52	115
**98B	Ade loamy fine sand, 1 to 6 percent slopes	6.33	8.1%		FAV	**134	**47	**57	**69	0	0.00	**4.22	**102
**503B	Rockton silt loam, 2 to 4 percent slopes	1.14	1.5%		FAV	**133	**45	**58	**74	0	**3.85	0.00	**100
<b>Weighted Average</b>						<b>152.4</b>	<b>50.2</b>	<b>62</b>	<b>82.1</b>	<b>*</b>	<b>2.60</b>	<b>2.01</b>	<b>113.9</b>

Area Symbol: IL091, Soil Area Version: 9

**Table: Optimum Crop Productivity Ratings for Illinois Soil by K.R. Olson and J.M. Lang, Office of Research, ACES, University of Illinois at Champaign-Urbana.** Version: 1/2/2012 Amended Table S2 B811 (Updated 1/10/2012)

Crop yields and productivity indices for optimum management (B811) are maintained at the following NRES web site: <http://soilproductivity.nres.illinois.edu/>

\*\* Indexes adjusted for slope and erosion according to Bulletin 811 Table S3

<sup>a</sup> UNF = unfavorable; FAV = favorable

<sup>b</sup> Soils in the southern region were not rated for oats and are shown with a zero "0".

<sup>c</sup> Soils in the northern region or in both regions were not rated for grain sorghum and are shown with a zero "0".

<sup>d</sup> Soils in the poorly drained group were not rated for alfalfa and are shown with a zero "0".

<sup>e</sup> Soils in the well drained group were not rated for grass-legume and are shown with a zero "0".

Field borders provided by Farm Service Agency as of 5/21/2008. Aerial photography provided by Aerial Photography Field Office.