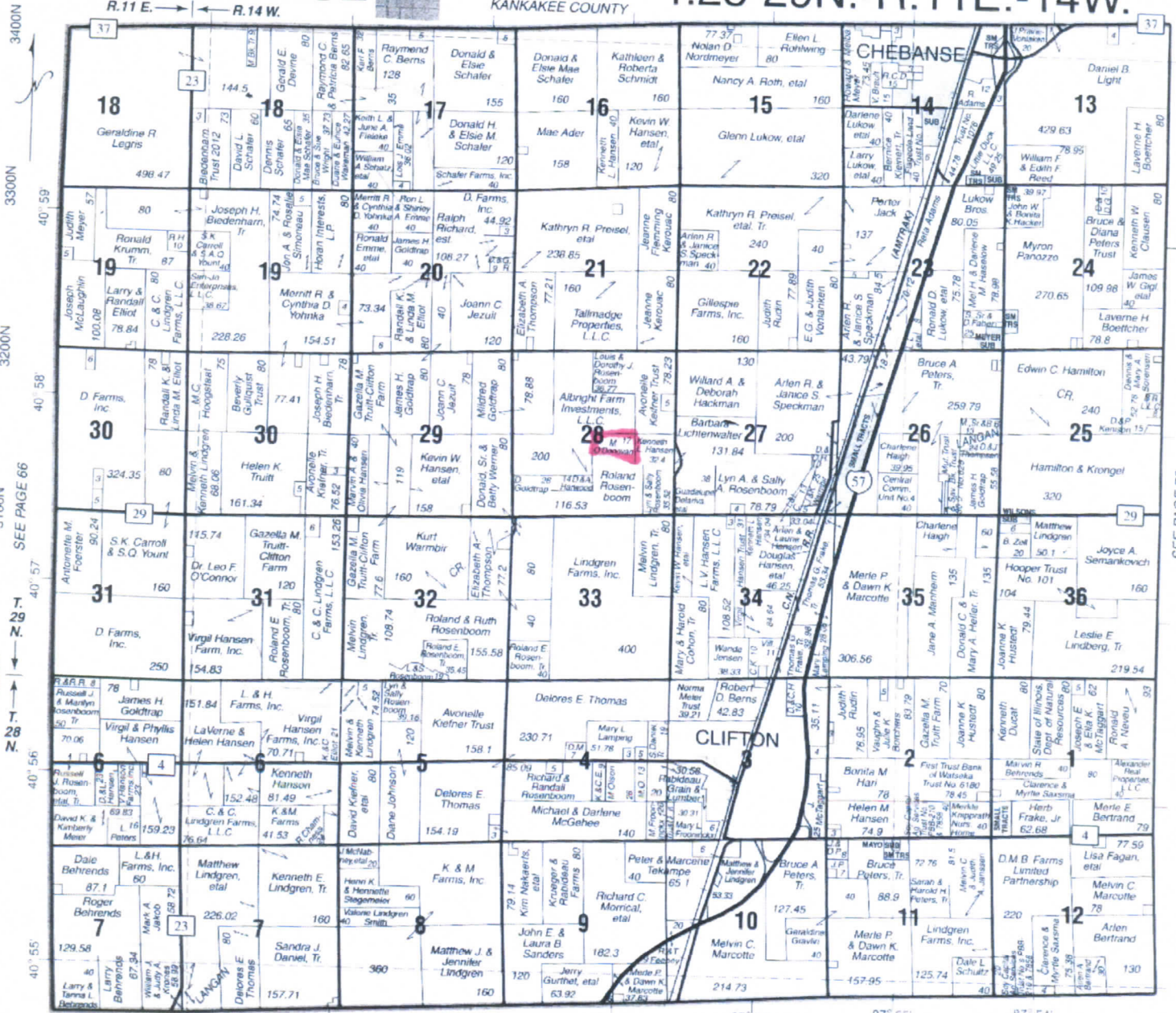


WEST PART CHEBANSE

T.28-29N.-R.11E.-14W.

KANKAKEE COUNTY



3400N
3300N
3200N
3100N
3000N
2900N

SEE PAGE 66
T. 29 N.
T. 28 N.
SEE PAGE 58

600E 700E 800E 900E 1000E 1100E 1200E 1300E

Aerial Map



map center: 40° 57' 53.46, 87° 57' 12.33



Maps Provided By
surety
CUSTOMIZED ONLINE MAPPING
© AgriData, Inc. 2016 www.AgrIDataInc.com

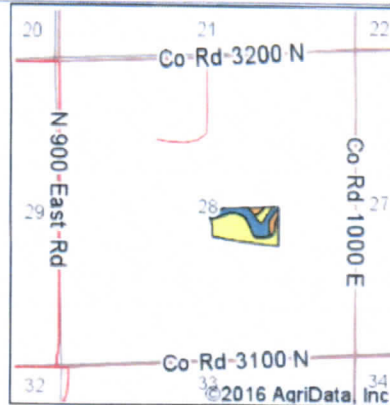
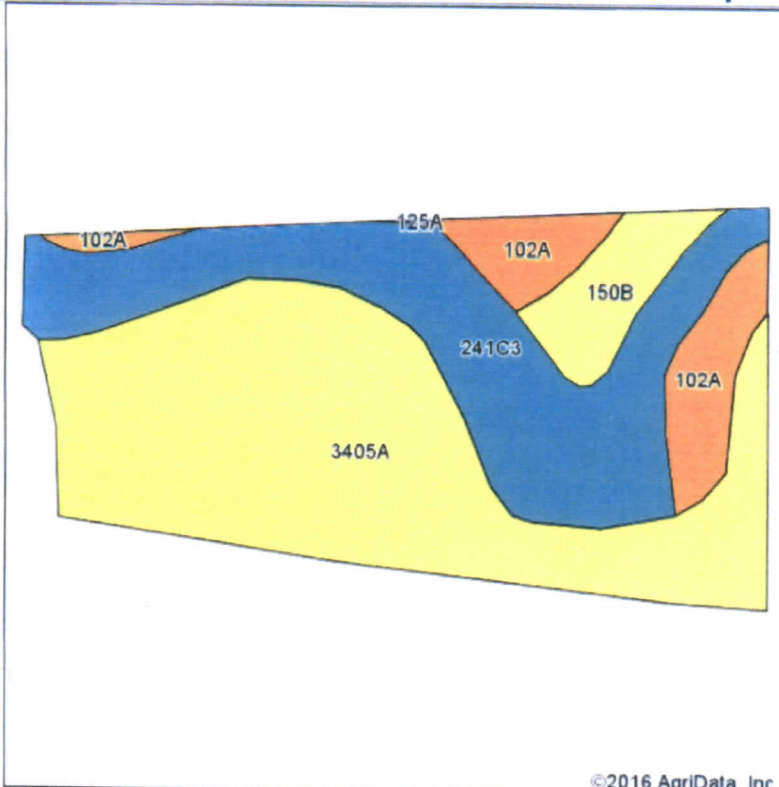
28-29N-14W
Iroquois County
Illinois



6/9/2016

Field borders provided by Farm Service Agency as of 5/21/2008. Soils data provided by University of Illinois at Champaign-Urbana

Soils Map



State: **Illinois**
 County: **Iroquois**
 Location: **28-29N-14W**
 Township: **Chebanse**
 Acres: **16.04**
 Date: **6/9/2016**

Soils data provided by USDA and NRCS

©2016 AgriData, Inc.

Maps Provided By: **surety**
 CUSTOMIZED ONLINE MAPPING
 © AgriData, Inc. 2016 www.AgriDataInc.com



Area Symbol: IL075, Soil Area Version: 9

Code	Soil Description	Acres	Percent of field	Il. State Productivity Index Legend	Subsoil rooting ^a	Corn Bu/A	Soybeans Bu/A	Wheat Bu/A	Oats Bu/A ^b	Sorghum ^c Bu/A	Alfalfa ^d hay, T/A	Grass-legume ^e hay, T/A	Crop productivity index for optimum management
3405A	Zook silty clay, 0 to 2 percent slopes, frequently flooded	8.41	52.4%		FAV	153	53	60	77	0	0.00	4.77	116
**241C3	Chatsworth silty clay, 4 to 6 percent slopes, severely eroded	4.94	30.8%		UNF	**79	**28	**28	**31	0	0.00	**2.54	**60
102A	La Hogue loam, 0 to 2 percent slopes	1.71	10.7%		FAV	162	52	71	80	0	0.00	5.27	121
**150B	Onarga fine sandy loam, 2 to 5 percent slopes	0.98	6.1%		FAV	**147	**48	**60	**76	0	**4.10	0.00	**109
Weighted Average						130.8	44.9	51.3	63.1	*-	0.25	3.85	98.9

Table: Optimum Crop Productivity Ratings for Illinois Soil by K.R. Olson and J.M. Lang, Office of Research, ACES, University of Illinois at Champaign-Urbana. Version: 1/2/2012 Amended Table S2 B811
 Crop yields and productivity indices for optimum management (B811) are maintained at the following NRES web site:
<https://www.ideals.illinois.edu/handle/2142/1027/>

Soils data provided by USDA and NRCS. Soils data provided by University of Illinois at Champaign-Urbana.
 ** Indexes adjusted for slope and erosion according to Bulletin 811 Table S3
^a UNF = unfavorable; FAV = favorable
^b Soils in the southern region were not rated for oats and are shown with a zero "0".
^c Soils in the northern region or in both regions were not rated for grain sorghum and are shown with a zero "0".