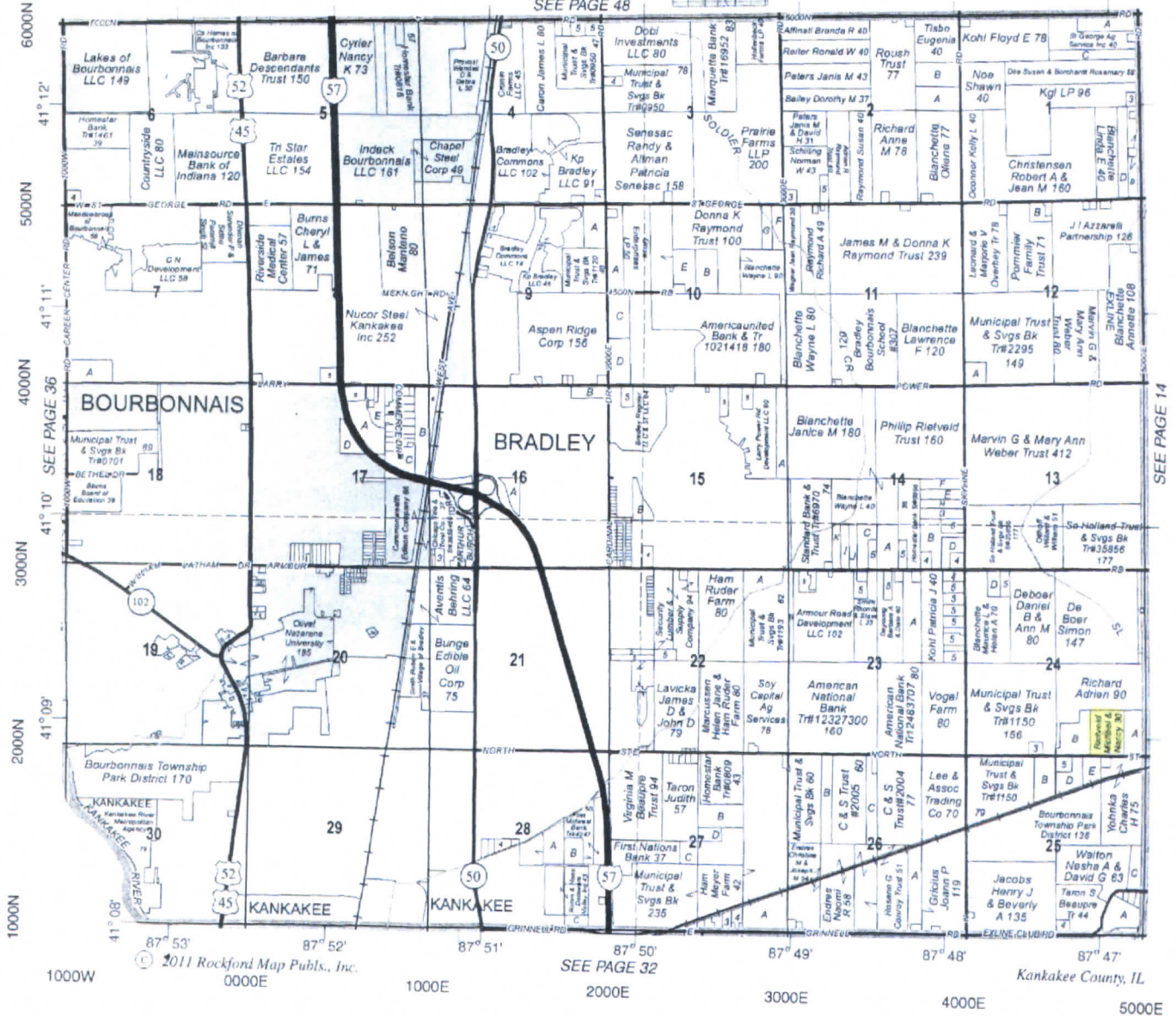


EAST PART BOURBONNAIS

T.31N.-R.12E.

SEE PAGE 48



SEE PAGE 14

SEE PAGE 32

© 2011 Rockford Map Publs., Inc.

Kankakee County, IL

### Aerial Map



map center: 41° 9' 20.87, 87° 47' 19.04



**24-31N-12E**  
**Kankakee County**  
**Illinois**

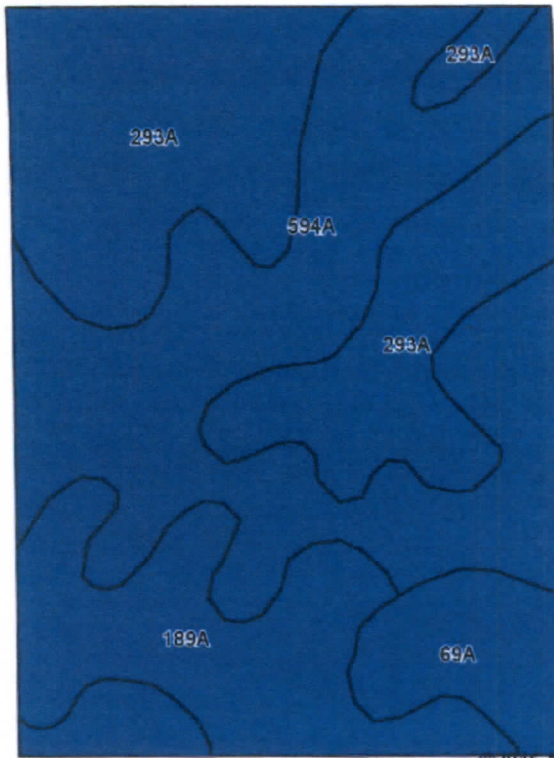


8/8/2016

Maps Provided By:  
**surety**  
CUSTOMIZED ONLINE MAPPING  
© AgriData, Inc. 2016 www.AgridataInc.com

Field borders provided by Farm Service Agency as of 5/21/2008. Soils data provided by University of Illinois at Champaign-Urbana

# Soils Map



State: **Illinois**  
 County: **Kankakee**  
 Location: **24-31N-12E**  
 Township: **Bourbonnais**  
 Acres: **29.42**  
 Date: **8/8/2016**

Soils data provided by USDA and NRCS.

©2016 AgriData, Inc.



Area Symbol: IL091, Soil Area Version: 11

Code	Soil Description	Acres	Percent of field	Il. State Productivity Index Legend	Subsoil rooting a	Corn Bu/A	Soybeans Bu/A	Wheat Bu/A	Oats Bu/A b	Sorghum c Bu/A	Alfalfa d hay, T/A	Grass-legume e hay, T/A	Crop productivity index for optimum management
594A	Reddick clay loam, 0 to 2 percent slopes	11.60	39.4%	■	FAV	177	56	66	89	0	0.00	5.14	130
293A	Andres silt loam, 0 to 2 percent slopes	10.04	34.1%	■	FAV	184	59	71	97	0	0.00	5.39	135
189A	Martinton silt loam, 0 to 2 percent slopes	5.01	17.0%	■	FAV	173	57	70	88	0	0.00	5.39	130
69A	Milford silty clay loam, 0 to 2 percent slopes	2.77	9.4%	■	FAV	171	57	68	88	0	0.00	5.52	128
<b>Weighted Average</b>						<b>178.1</b>	<b>57.3</b>	<b>68.6</b>	<b>91.5</b>	<b>0</b>	<b>0.00</b>	<b>5.30</b>	<b>131.5</b>

**Table: Optimum Crop Productivity Ratings for Illinois Soil** by K.R. Olson and J.M. Lang, Office of Research, ACES, University of Illinois at Champaign-Urbana. Version: 1/2/2012 Amended Table S2 B811

Crop yields and productivity indices for optimum management (B811) are maintained at the following NRES web site: <https://www.ideals.illinois.edu/handle/2142/10277>

\*\* Indexes adjusted for slope and erosion according to Bulletin 811 Table S3

a UNF = unfavorable; FAV = favorable

b Soils in the southern region were not rated for oats and are shown with a zero "0".

c Soils in the northern region or in both regions were not rated for grain sorghum and are shown with a zero "0".