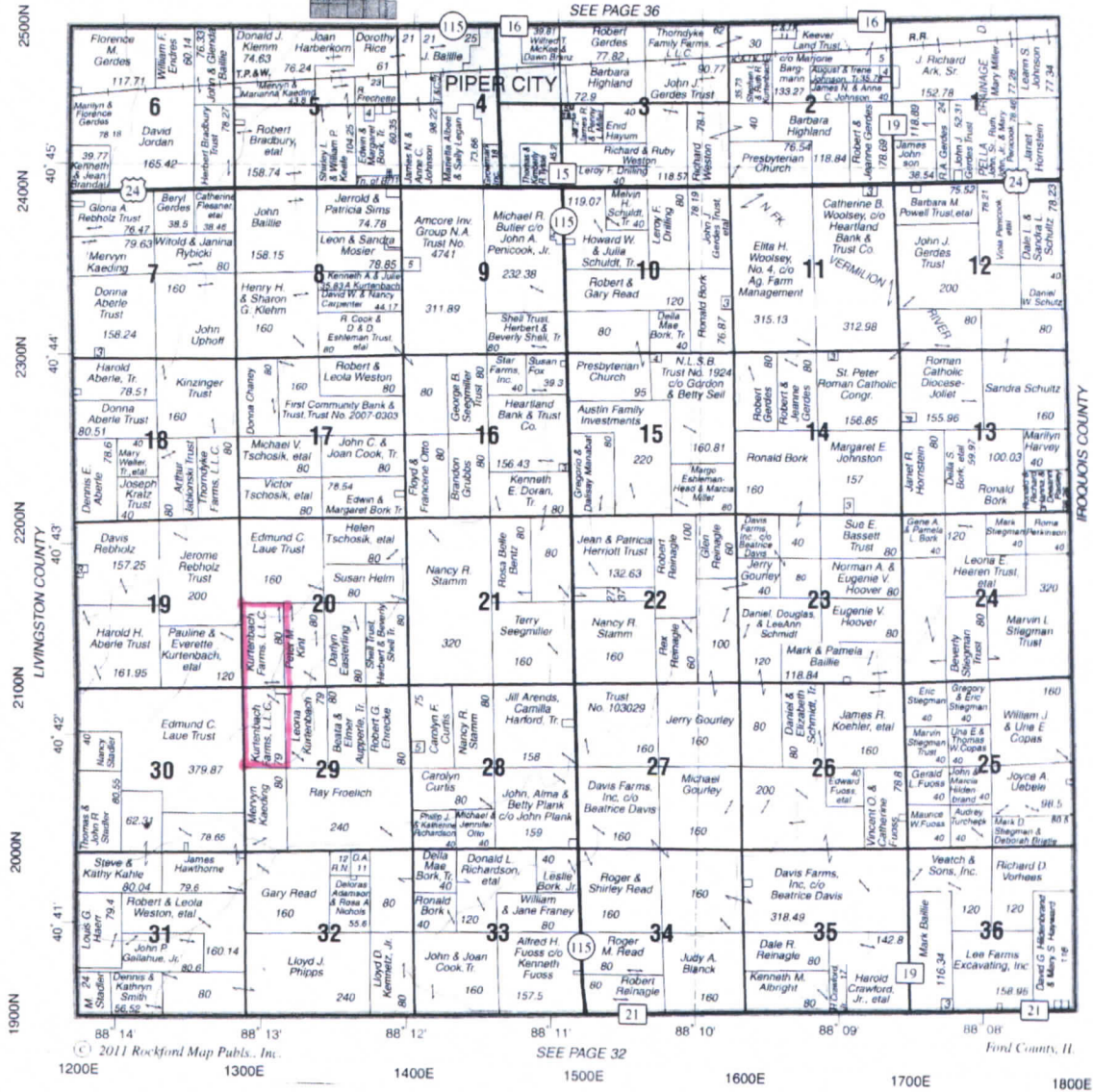


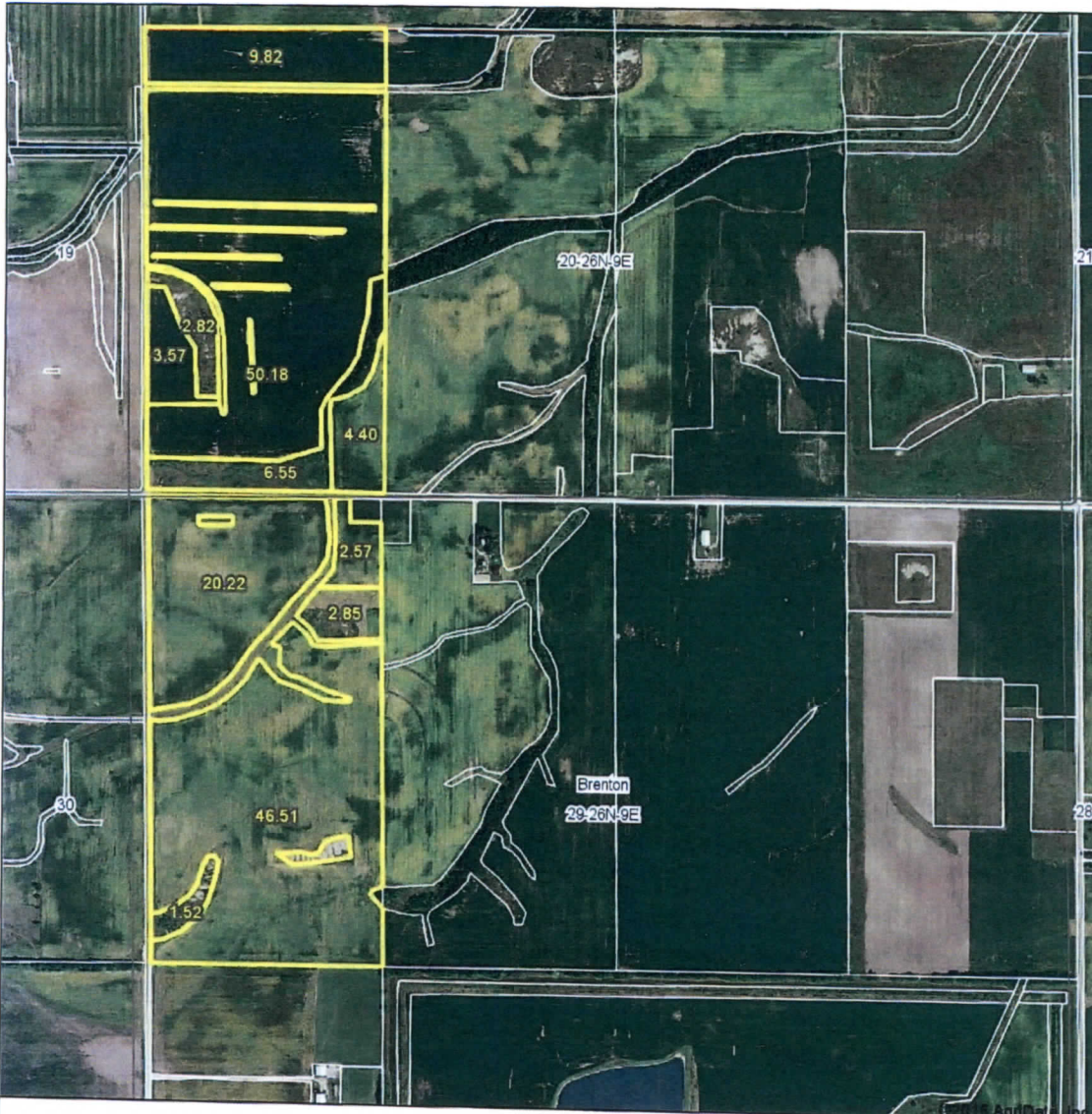
BRENTON

T.26N.-R.9E.

SEE PAGE 36



Aerial Map



map center: 40° 42' 12.59, 88° 12' 37.85



Maps Provided By:
surety
CUSTOMIZED ONLINE MAPPING
© AgriData, Inc. 2016 www.AgriDataInc.com

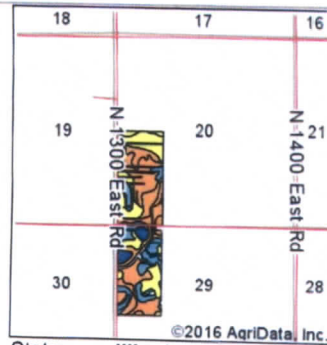
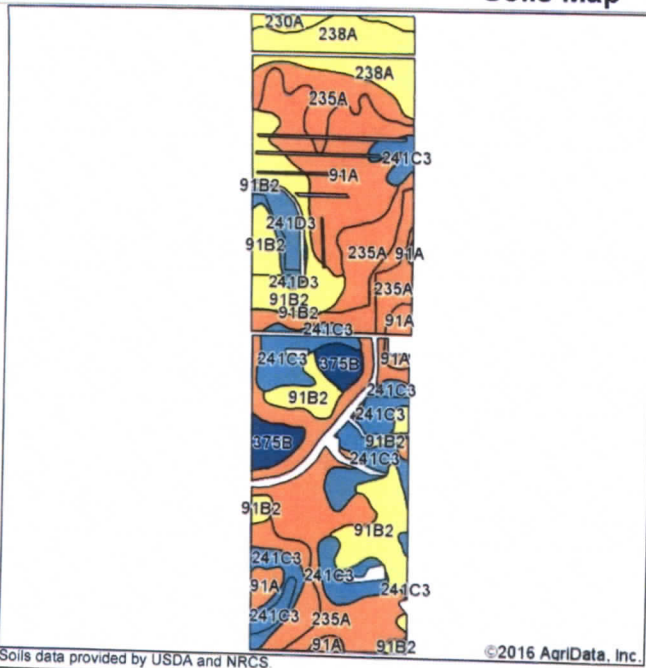
29-26N-9E
Ford County
Illinois



8/4/2016

Field borders provided by Farm Service Agency as of 5/21/2008. Soils data provided by University of Illinois at Champaign-Urbana.

Soils Map



State: **Illinois**
 County: **Ford**
 Location: **29-26N-9E**
 Township: **Brenton**
 Acres: **151.01**
 Date: **8/4/2016**

Soils data provided by USDA and NRCS.

©2016 AgriData, Inc.

Maps Provided By:
surety
 CUSTOMIZED ONLINE MAPPING
 © AgriData, Inc. 2016 www.AgridataInc.com



Area Symbol: IL053, Soil Area Version: 11

Code	Soil Description	Acres	Percent of field	Il. State Productivity Index Legend	Subsoil rooting a	Corn Bu/A	Soybeans Bu/A	Wheat Bu/A	Oats Bu/A b	Sorghum c Bu/A	Alfalfa d hay, T/A	Grass-legume e hay, T/A	Crop productivity index for optimum management
235A	Bryce silty clay, 0 to 2 percent slopes	47.11	31.2%		FAV	162	54	64	82	0	0.00	4.77	121
91A	Swygert silty clay loam, 0 to 2 percent slopes	28.33	18.8%		UNF	158	52	63	79	0	0.00	4.52	118
**91B2	Swygert silty clay loam, 2 to 4 percent slopes, eroded	26.93	17.8%		UNF	**147	**48	**59	**73	0	0.00	**4.20	**110
**241C3	Chatsworth silty clay, 4 to 6 percent slopes, severely eroded	23.96	15.9%		UNF	**79	**28	**28	**31	0	0.00	**2.54	**60
238A	Rantoul silty clay, 0 to 2 percent slopes	12.29	8.1%		FAV	144	49	56	64	0	0.00	4.14	109
**375B	Rutland silty clay loam, 2 to 5 percent slopes	5.78	3.8%		FAV	**178	**57	**70	**96	0	0.00	**5.46	**132
**241D3	Chatsworth silty clay, 6 to 12 percent slopes, severely eroded	4.05	2.7%		UNF	**75	**27	**27	**30	0	0.00	**2.41	**57
230A		2.56	1.7%		FAV	148	49	59	70	0	0.00	4.26	111

Soil Map

Rowe silty clay loam, 0 to 2 percent slopes																					
Weighted Average														142	47.3	55.7	69.2	-	0.00	4.17	106.4

Table: Optimum Crop Productivity Ratings for Illinois Soil by K.R. Olson and J.M. Lang, Office of Research, ACES, University of Illinois at Champaign-Urbana. Version: 1/2/2012 Amended Table S2 B811
Crop yields and productivity indices for optimum management (B811) are maintained at the following NRES web site:
<https://www.ideals.illinois.edu/handle/2142/1027/>

- ** Indexes adjusted for slope and erosion according to Bulletin 811 Table S3
- a UNF = unfavorable; FAV = favorable
- b Soils in the southern region were not rated for oats and are shown with a zero "0".
- c Soils in the northern region or in both regions were not rated for grain sorghum and are shown with a zero "0".
- d Soils in the poorly drained group were not rated for alfalfa and are shown with a zero "0".
- e Soils in the well drained group were not rated for grass-legume and are shown with a zero "0".
- *c: Using Capabilities Class Dominant Condition Aggregation Method

Soils data provided by USDA and NRCS. Soils data provided by University of Illinois at Champaign-Urbana