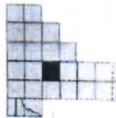


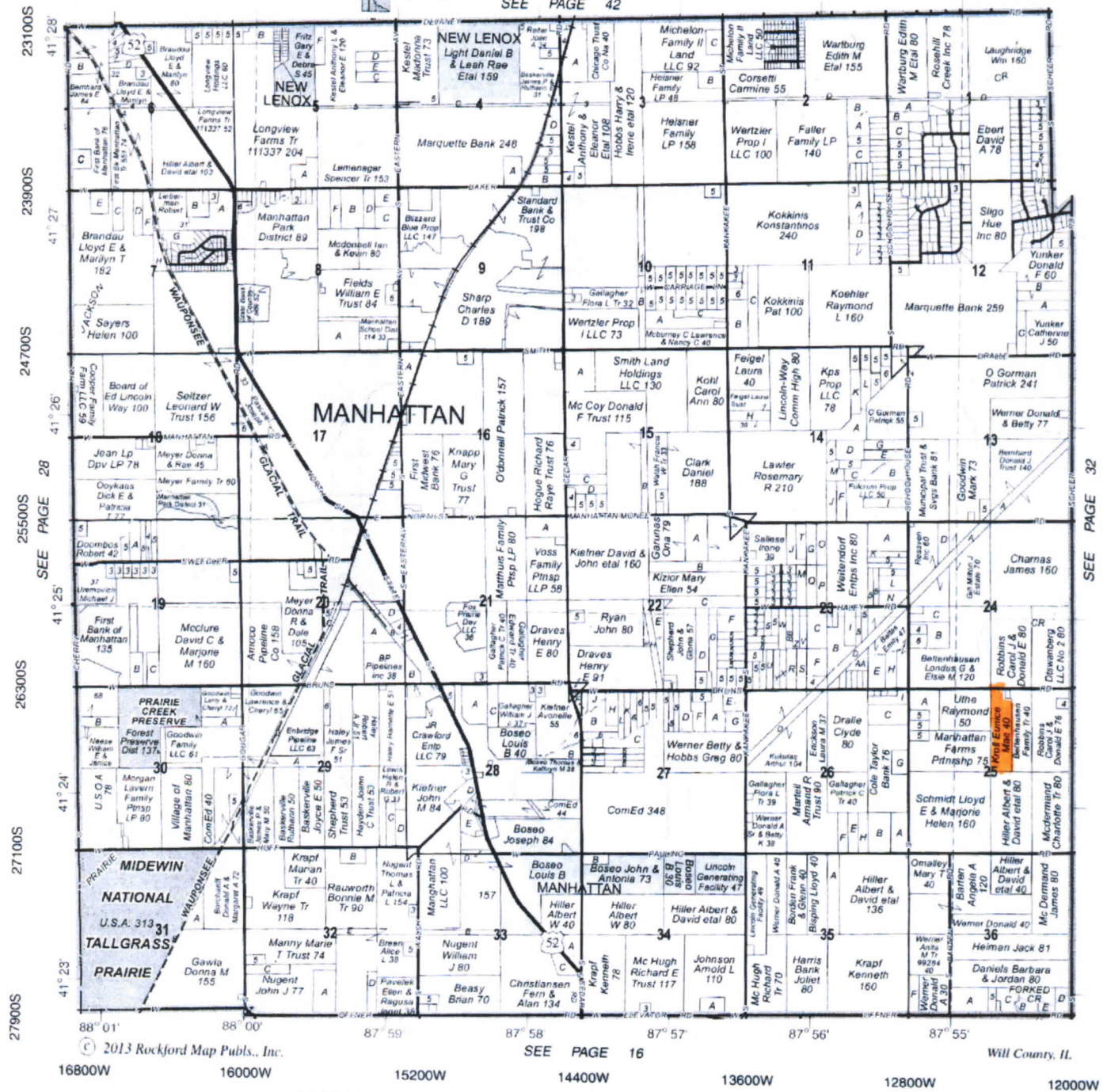
MANHATTAN



SEE PAGE 42

T.34N.-R.11E.

Refer to page 66 for keyed parcels



© 2013 Rockford Map Pubs., Inc.

SEE PAGE 16

Will County, IL

16800W

16000W

15200W

14400W

13600W

12800W

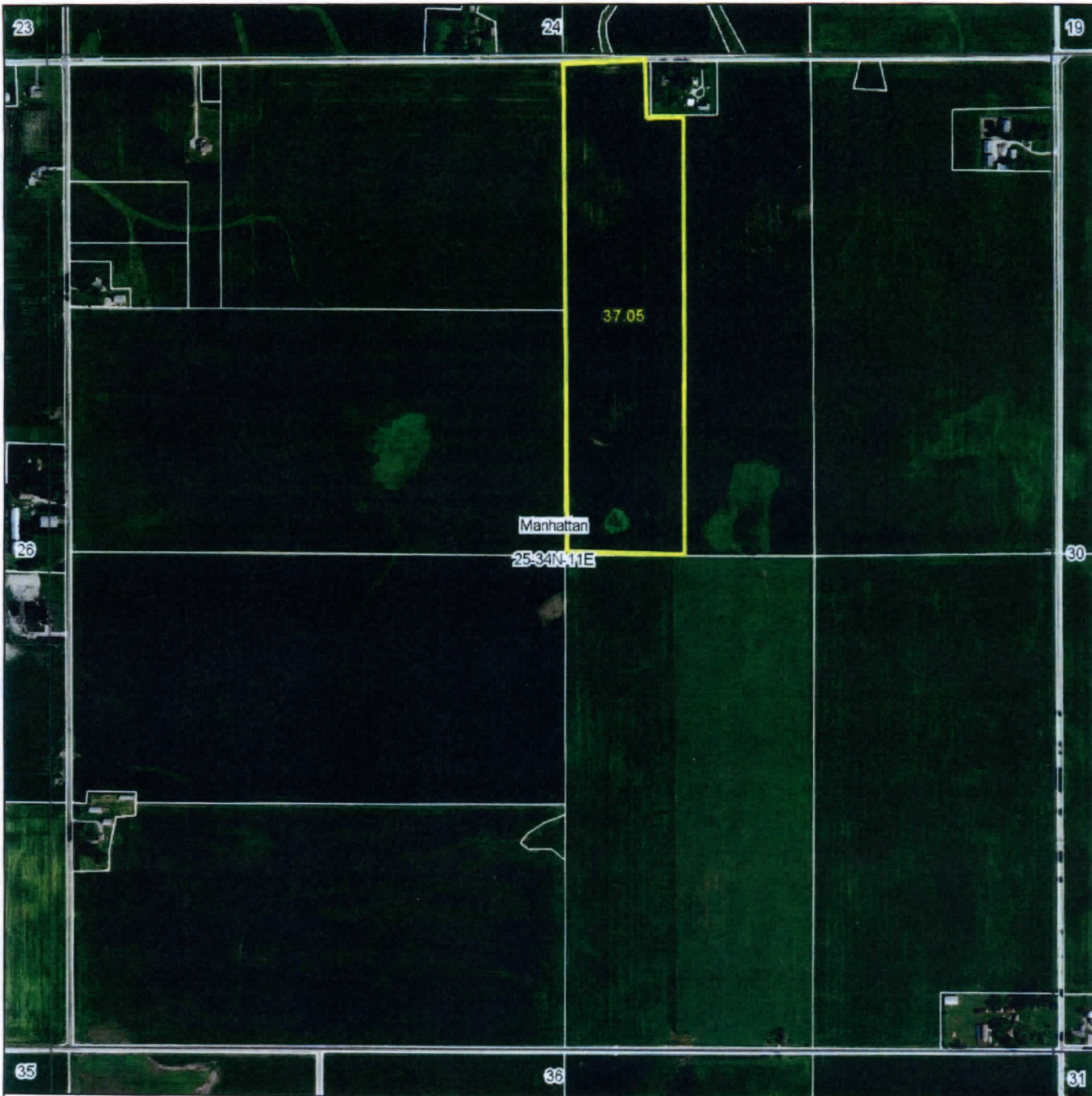
12000W

231000
239000
247000
255000
263000
271000
279000

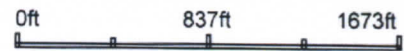
41° 28'
41° 27'
41° 26'
41° 25'
41° 24'
41° 23'

SEE PAGE 32

Aerial Map



map center: 41° 24' 11.66, -87° 54' 45.41



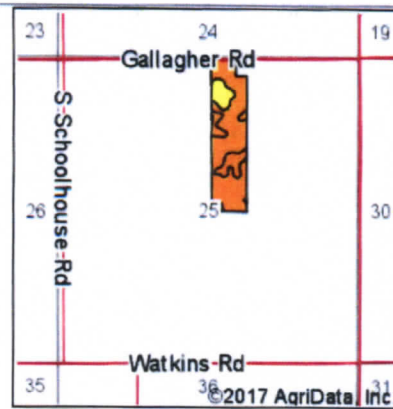
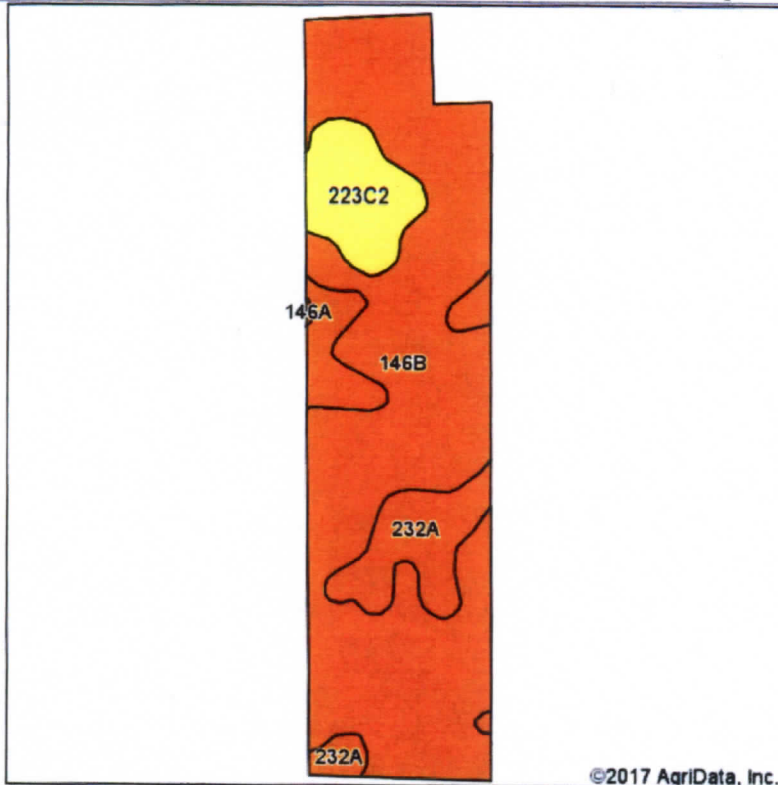
25-34N-11E
Will County
Illinois



4/27/2017

Field borders provided by Farm Service Agency as of 5/21/2008. Soils data provided by University of Illinois at Champaign-Urbana

Soils Map



State: **Illinois**
 County: **Will**
 Location: **25-34N-11E**
 Township: **Manhattan**
 Acres: **37.05**
 Date: **4/27/2017**



Soils data provided by USDA and NRCS.

©2017 AgriData, Inc.

Area Symbol: IL197, Soil Area Version: 11

Code	Soil Description	Acres	Percent of field	Il. State Productivity Index Legend	Subsoil rooting ^a	Corn Bu/A	Soybeans Bu/A	Wheat Bu/A	Oats Bu/A ^b	Sorghum ^c Bu/A	Alfalfa ^d hay, T/A	Grass-legume ^e hay, T/A	Crop productivity index for optimum management
**146B	Elliott silt loam, 2 to 4 percent slopes	27.39	73.9%		FAV	**166	**54	**67	**86	0	0.00	**4.97	**124
232A	Ashkum silty clay loam, 0 to 2 percent slopes	6.27	16.9%		FAV	170	56	65	85	0	0.00	5.14	127
**223C2	Varna silt loam, 4 to 6 percent slopes, eroded	3.39	9.1%		FAV	**150	**48	**61	**75	0	**4.65	0.00	**110
Weighted Average						165.2	53.8	66.1	84.8	*-	0.43	4.54	123.2

Table: Optimum Crop Productivity Ratings for Illinois Soil by K.R. Olson and J.M. Lang, Office of Research, ACES, University of Illinois at Champaign-Urbana. Version: 1/2/2012 Amended Table S2 B811

Crop yields and productivity indices for optimum management (B811) are maintained at the following NRES web site: <https://www.ideals.illinois.edu/handle/2142/10277>

^a Indexes adjusted for slope and erosion according to Bulletin 811 Table S3

^b UNF = unfavorable; FAV = favorable

^c Soils in the southern region were not rated for oats and are shown with a zero "0".

^d Soils in the northern region or in both regions were not rated for grain sorghum and are shown with a zero "0".