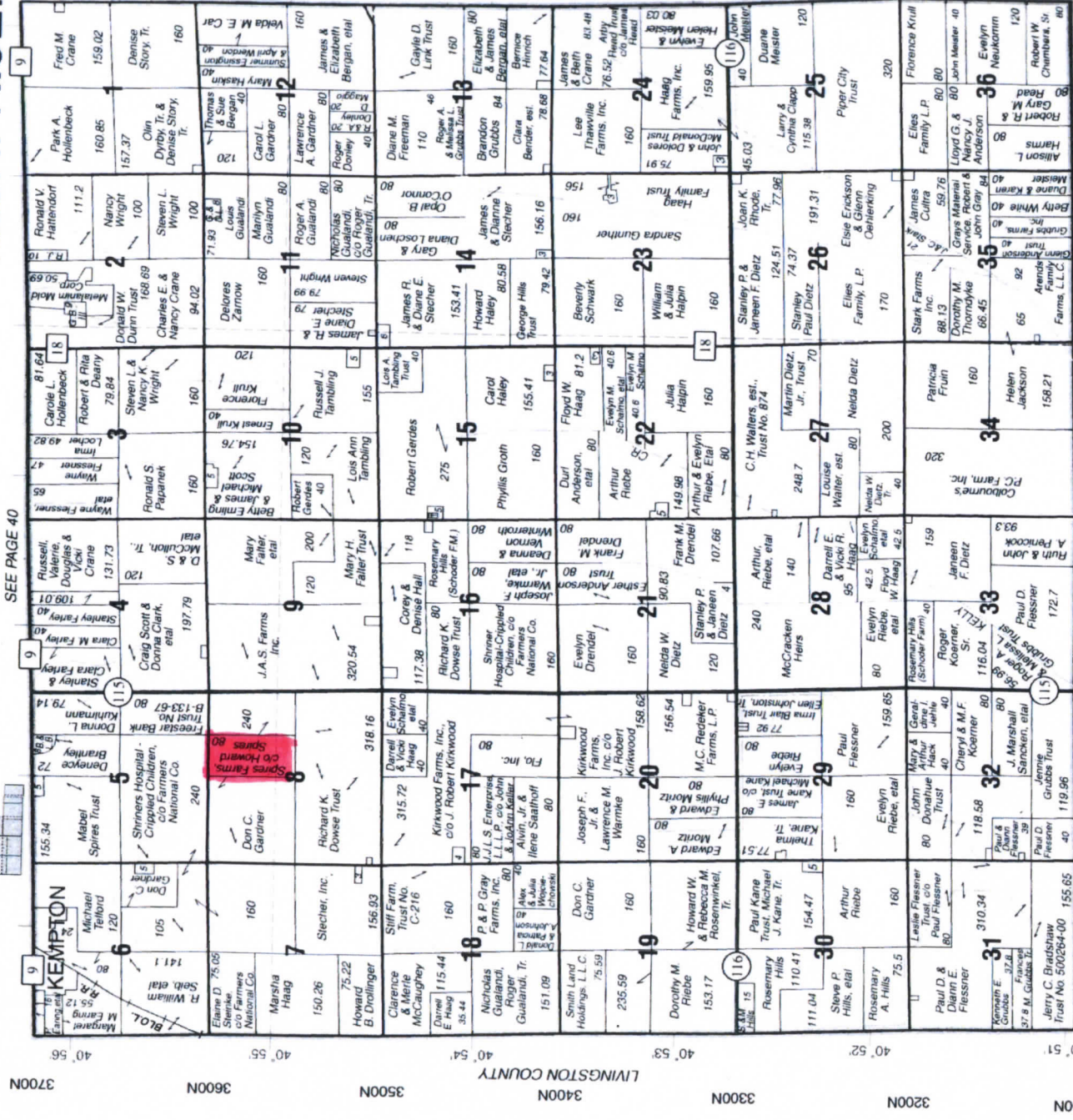


MONA

T.28N.-R.9E.



SEE PAGE 40

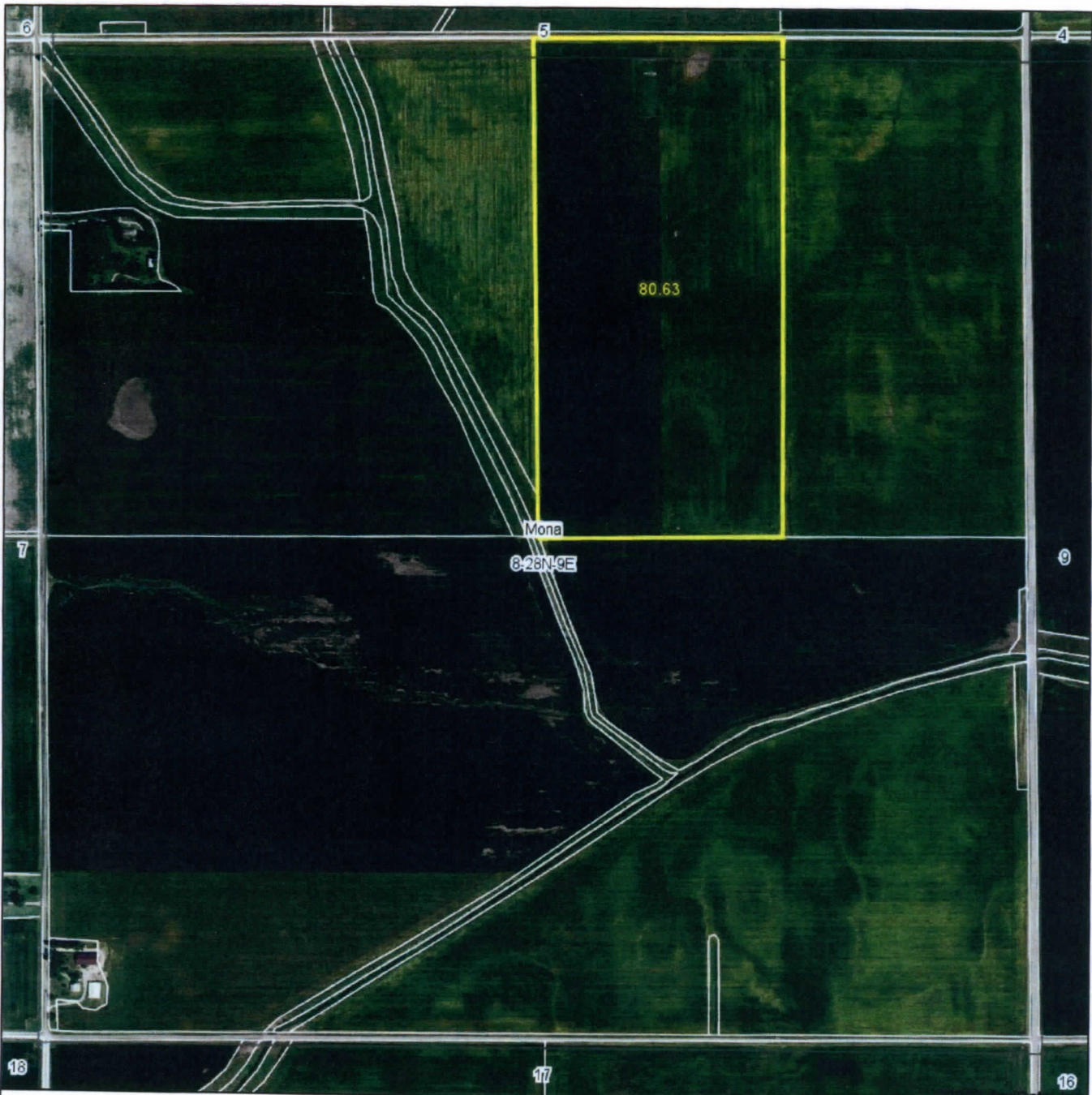
SEE PAGE 36

© 2011 Rockford Map Publs., Inc.

ILLINOIS COUNTY

LIVINGSTON COUNTY

Aerial Map



map center: 40° 54' 54.37, -88° 12' 58.18

0ft 830ft 1660ft

Maps Provided By

 CUSTOMIZED ONLINE MAPPING
 © AgriData, Inc. 2017 www.AgrDataInc.com

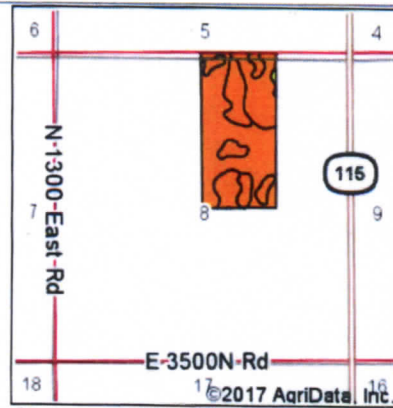
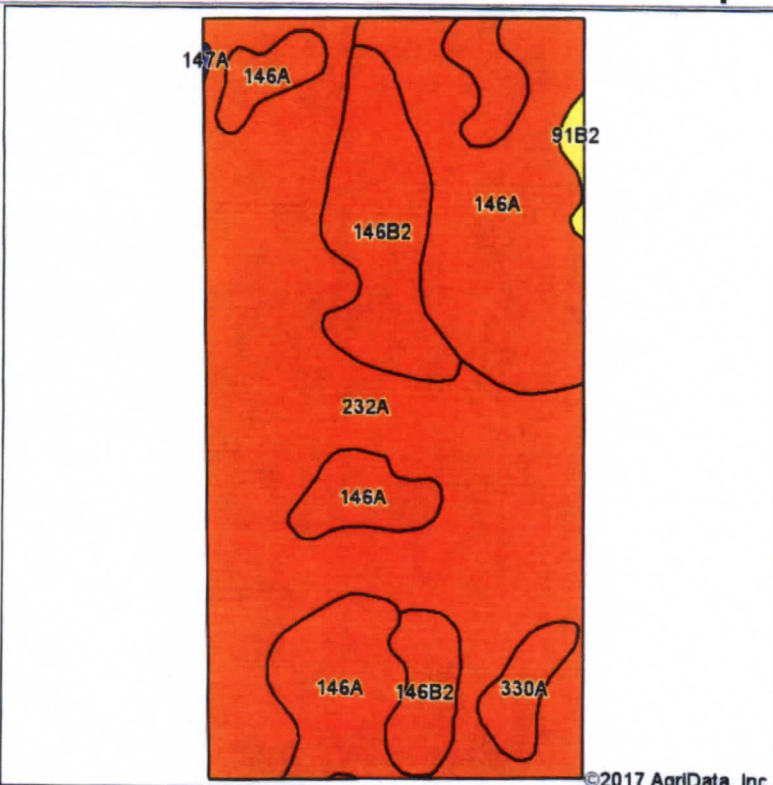
8-28N-9E
Ford County
Illinois



4/27/2017

Field borders provided by Farm Service Agency as of 5/21/2008. Soils data provided by University of Illinois at Champaign-Urbana.

Soils Map



State: **Illinois**
 County: **Ford**
 Location: **8-28N-9E**
 Township: **Mona**
 Acres: **80.63**
 Date: **4/27/2017**



Soils data provided by USDA and NRCS.

©2017 AgriData, Inc.

Area Symbol: IL053, Soil Area Version: 12

Code	Soil Description	Acres	Percent of field	Il. State Productivity Index Legend	Subsoil rooting a	Corn Bu/A	Soybeans Bu/A	Wheat Bu/A	Oats Bu/A b	Sorghum c Bu/A	Alfalfa d hay, T/A	Grass-legume e hay, T/A	Crop productivity index for optimum management
232A	Ashkum silty clay loam, 0 to 2 percent slopes	43.64	54.1%		FAV	170	56	65	85	0	0.00	5.14	127
146A	Elliott silt loam, 0 to 2 percent slopes	24.30	30.1%		FAV	168	55	68	87	0	0.00	5.02	125
**146B2	Elliott silty clay loam, 2 to 4 percent slopes, eroded	10.25	12.7%		FAV	**160	**52	**65	**83	0	0.00	**4.77	**119
330A	Peotone silty clay loam, 0 to 2 percent slopes	1.94	2.4%		FAV	164	55	61	78	0	0.00	5.02	123
**91B2	Swygert silty clay loam, 2 to 4 percent slopes, eroded	0.50	0.6%		UNF	**147	**48	**59	**73	0	0.00	**4.20	**110
Weighted Average						167.8	55.1	65.8	85.1	0	0.00	5.05	125.2

Table: Optimum Crop Productivity Ratings for Illinois Soil by K.R. Olson and J.M. Lang, Office of Research, ACES, University of Illinois at Champaign-Urbana. Version: 1/2/2012 Amended Table S2 B811

Crop yields and productivity indices for optimum management (B811) are maintained at the following NRES web site: <https://www.ideals.illinois.edu/handle/2142/10277>
 ** Indexes adjusted for slope and erosion according to Bulletin 811 Table S3
 a UNF = unfavorable; FAV = favorable
 b Soils in the southern region were not rated for oats and are shown with a zero "0".
 c Soils in the northern region or in both regions were not rated for grain sorghum and are shown with a zero "0".