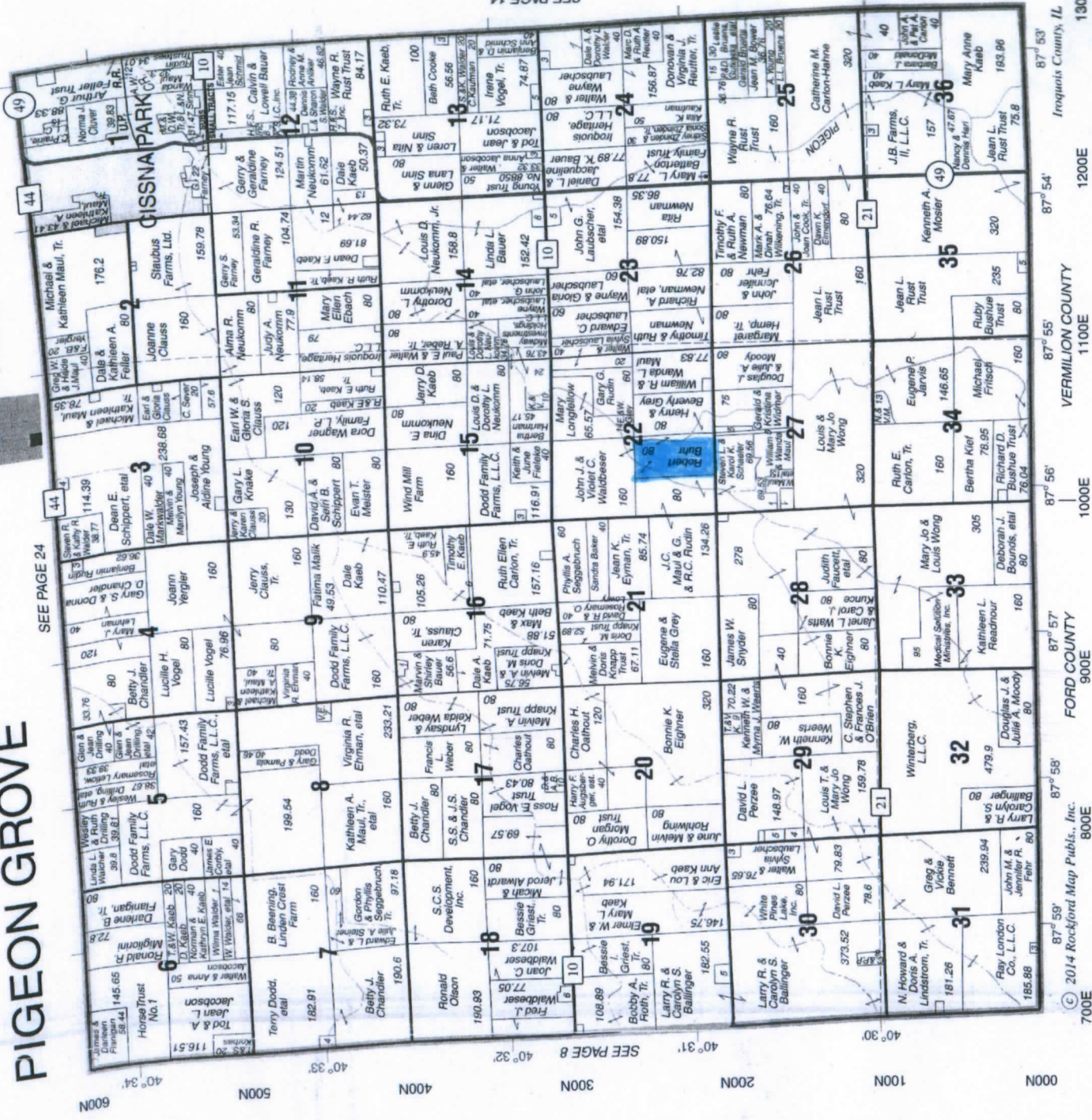


PIGEON GROVE



700E
© 2014 Rockford Map Publs., Inc.
800E
87° 59'

FORD COUNTY
900E

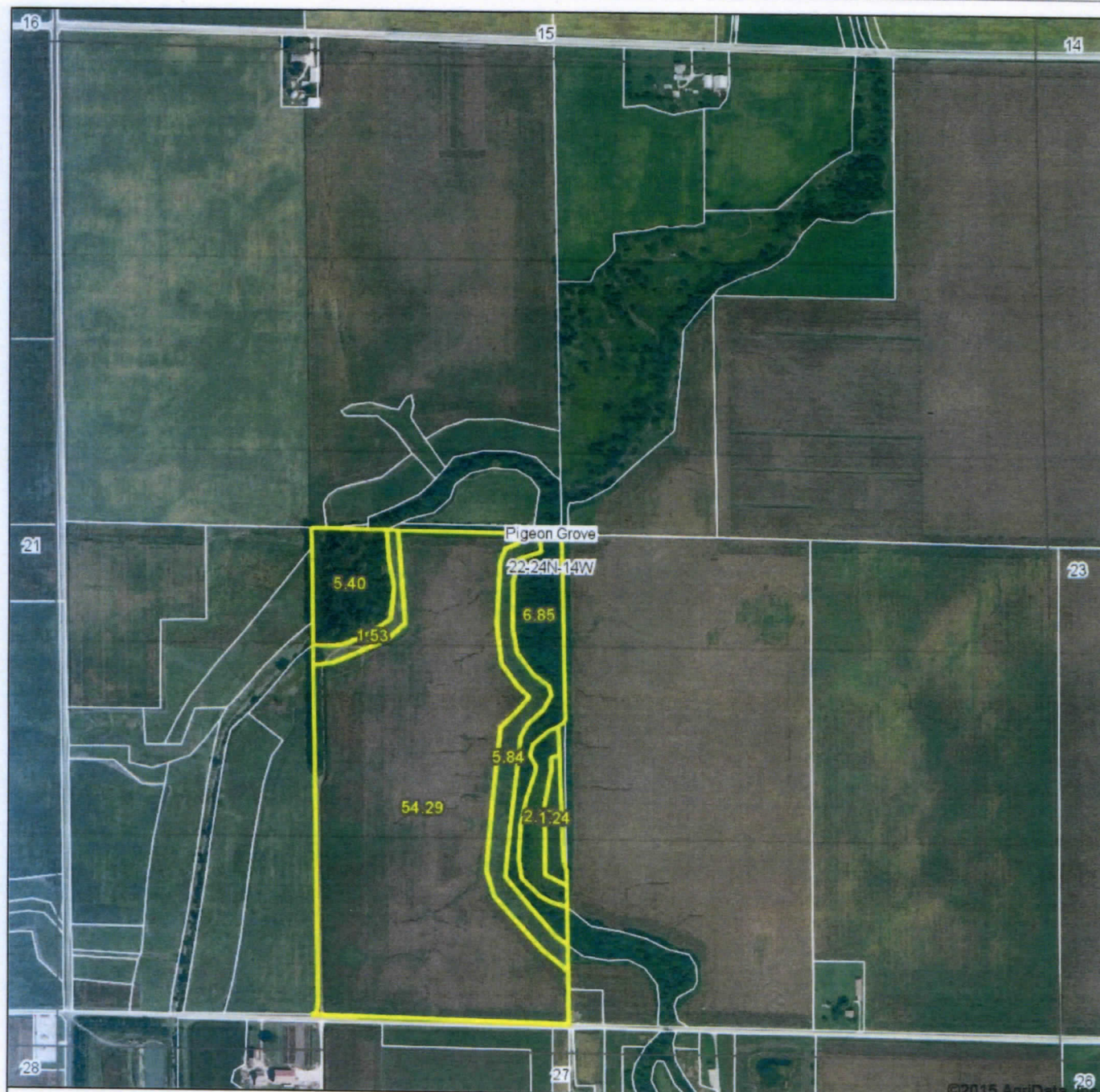
1000E

VERMILION COUNTY
1100E

1200E

Iroquois County, IL
1300E

Aerial Map



map center: 40° 31' 17.79, 87° 55' 36.67
scale: 9439

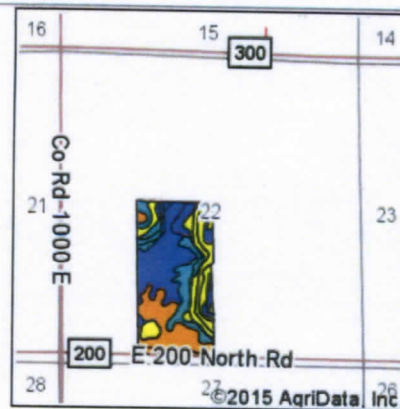
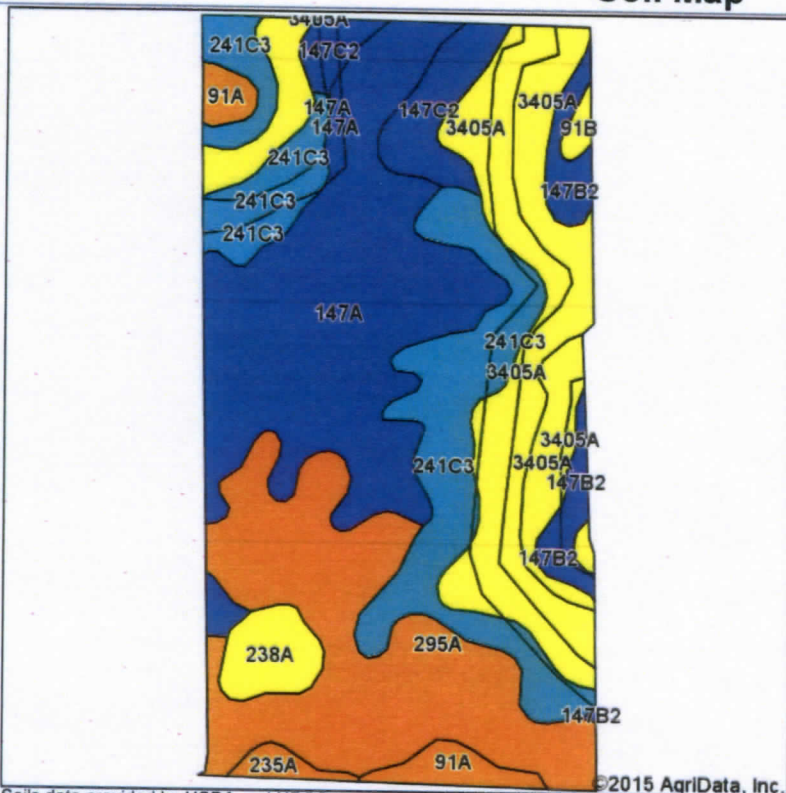
Maps Provided By:
 **surety**
CUSTOMIZED ONLINE MAPPING
© AgriData, Inc. 2014 www.AgriDataInc.com

22-24N-14W
Iroquois County
Illinois



Field borders provided by Farm Service Agency as of 5/21/2008. Aerial photography provided by Aerial Photography Field Office. Soils data provided by University of Illinois at Champaign-Urbana.

Soil Map



State: Illinois
 County: Iroquois
 Location: 22-24N-14W
 Township: Pigeon Grove
 Acres: 77.72
 Date: 4/1/2015



Maps Provided By:
surety
 CUSTOMIZED ONLINE MAPPING
 © AgriData, Inc. 2014 www.AgriDataInc.com

Soils data provided by USDA and NRCS.

©2015 AgriData, Inc.

Area Symbol: IL075, Soil Area Version: 8

Code	Soil Description	Acres	Percent of field	Il. State Productivity Index Legend	Subsoil rooting a	Corn Bu/A	Soybeans Bu/A	Wheat Bu/A	Oats Bu/A b	Sorghum c Bu/A	Alfalfa d hay, T/A	Grass-legume e hay, T/A	Crop productivity index for optimum management
147A	Clarence silty clay loam, 0 to 2 percent slopes	20.25	26.1%		UNF	140	49	59	65	0	0.00	4.39	107
295A	Mokena silt loam, 0 to 2 percent slopes	16.69	21.5%		FAV	172	54	66	88	0	0.00	4.89	126
3405A	Zook silty clay, 0 to 2 percent slopes, frequently flooded	16.33	21.0%		FAV	153	53	60	77	0	0.00	4.77	116
**241C3	Chatsworth silty clay, 4 to 6 percent slopes, severely eroded	13.23	17.0%		UNF	**79	**28	**28	**31	0	0.00	**2.54	**60
**147C2	Clarence silty clay loam, 4 to 6 percent slopes, eroded	3.46	4.5%		UNF	**130	**46	**55	**60	0	0.00	**4.08	**100
**147B2	Clarence silty clay loam, 2 to 4 percent slopes, eroded	2.50	3.2%		UNF	**130	**46	**55	**60	0	0.00	**4.08	**100
91A		2.02	2.6%		UNF	158	52	63	79	0	0.00	4.52	118





	Swygert silty clay loam, 0 to 2 percent slopes												
238A	Rantoul silty clay, 0 to 2 percent slopes	2.00	2.6%		FAV	144	49	56	64	0	0.00	4.14	109
235A	Bryce silty clay, 0 to 2 percent slopes	0.68	0.9%		FAV	162	54	64	82	0	0.00	4.77	121
**91B	Swygert silty clay loam, 2 to 4 percent slopes	0.56	0.7%		UNF	**156	**51	**62	**78	0	0.00	**4.47	**117
Weighted Average						139.3	47.2	55.2	66.9	*-	0.00	4.24	105

Table: Optimum Crop Productivity Ratings for Illinois Soil by K.R. Olson and J.M. Lang, Office of Research, ACES, University of Illinois at Champaign-Urbana. Version: 1/2/2012 Amended Table S2 B811 (Updated 1/10/2012)

Crop yields and productivity indices for optimum management (B811) are maintained at the following NRES web site:

<http://soilproductivity.nres.illinois.edu/>

** Indexes adjusted for slope and erosion according to Bulletin 811 Table S3

a UNF = unfavorable; FAV = favorable

b Soils in the southern region were not rated for oats and are shown with a zero "0".

c Soils in the northern region or in both regions were not rated for grain sorghum and are shown with a zero "0".

d Soils in the poorly drained group were not rated for alfalfa and are shown with a zero "0".

e Soils in the well drained group were not rated for grass-legume and are shown with a zero "0".

Soils data provided by USDA and NRCS. Soils data provided by University of Illinois at Champaign-Urbana.