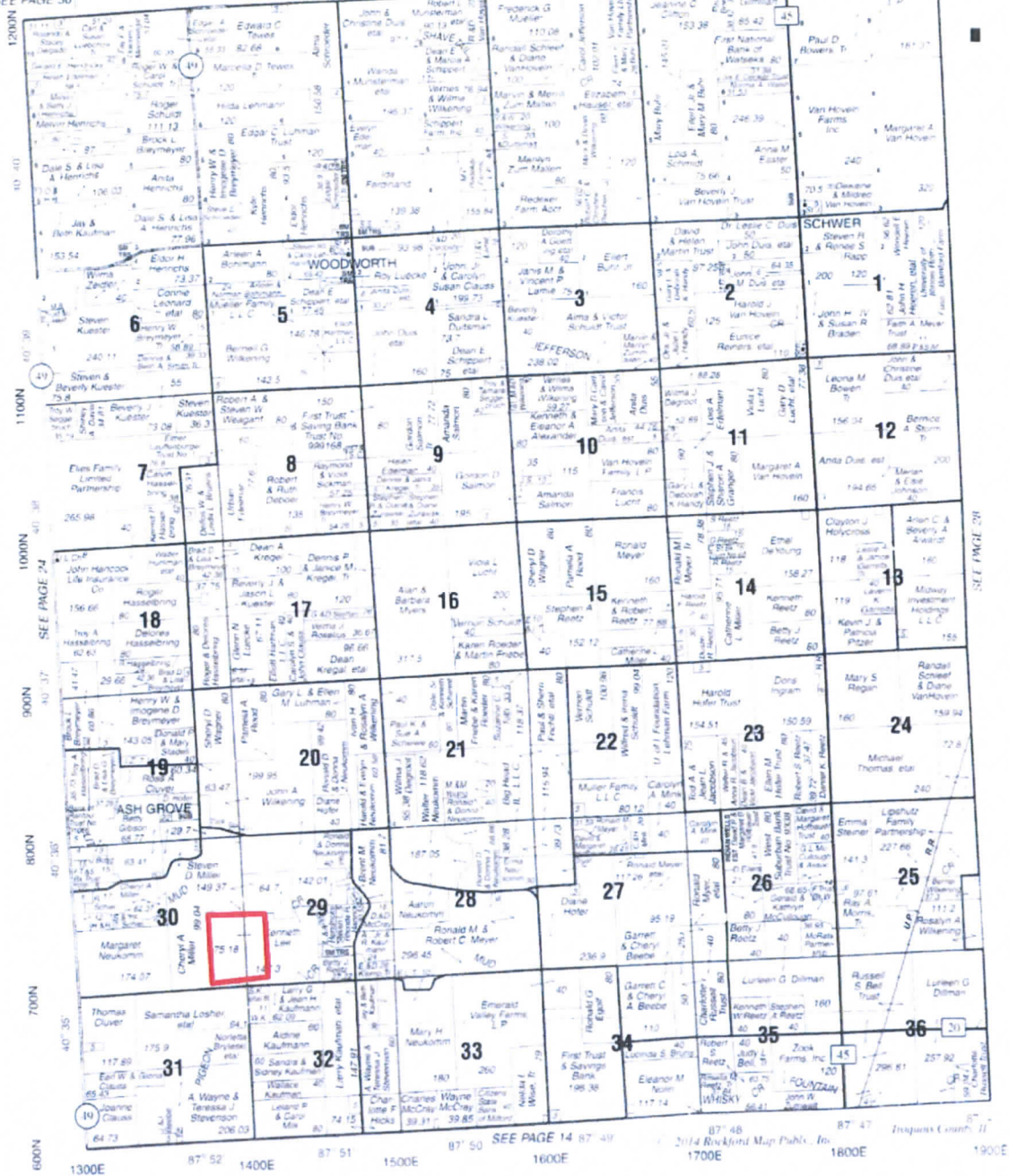


EAST PART ASH GROVE

T.25N.-R.13W.

SEE PAGE 36

SEE PAGE 38



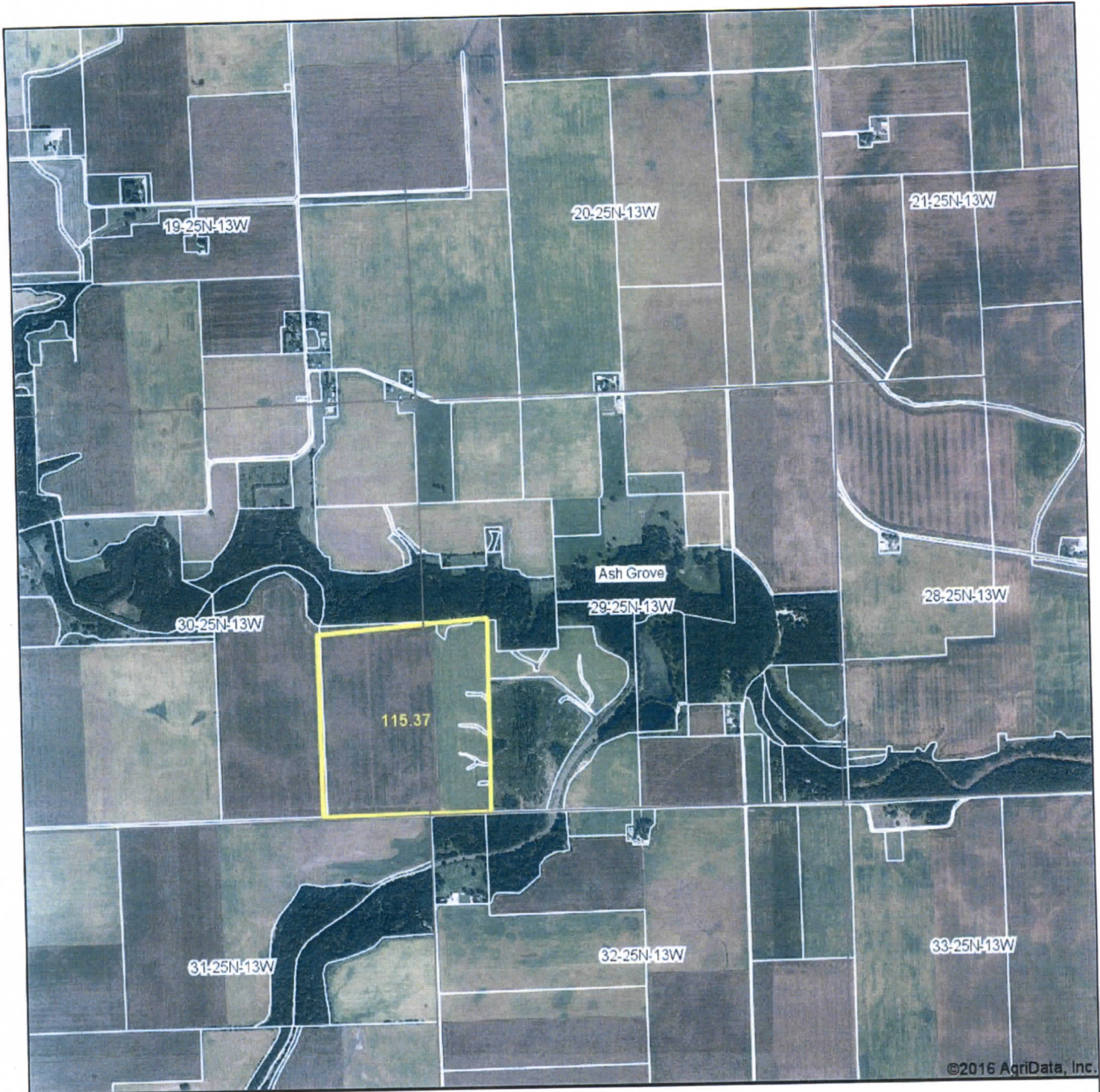
SEE PAGE 29

SEE PAGE 14

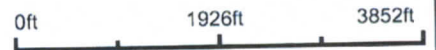
2014 Rockford Map Publ. Co.

Inspurs County, Ill.

Aerial Map



map center: 40° 35' 47.18, 87° 51' 17.96



Maps Provided By



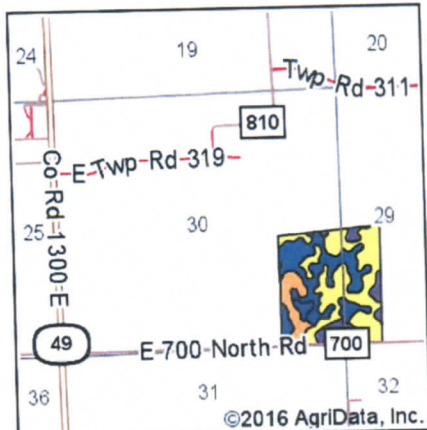
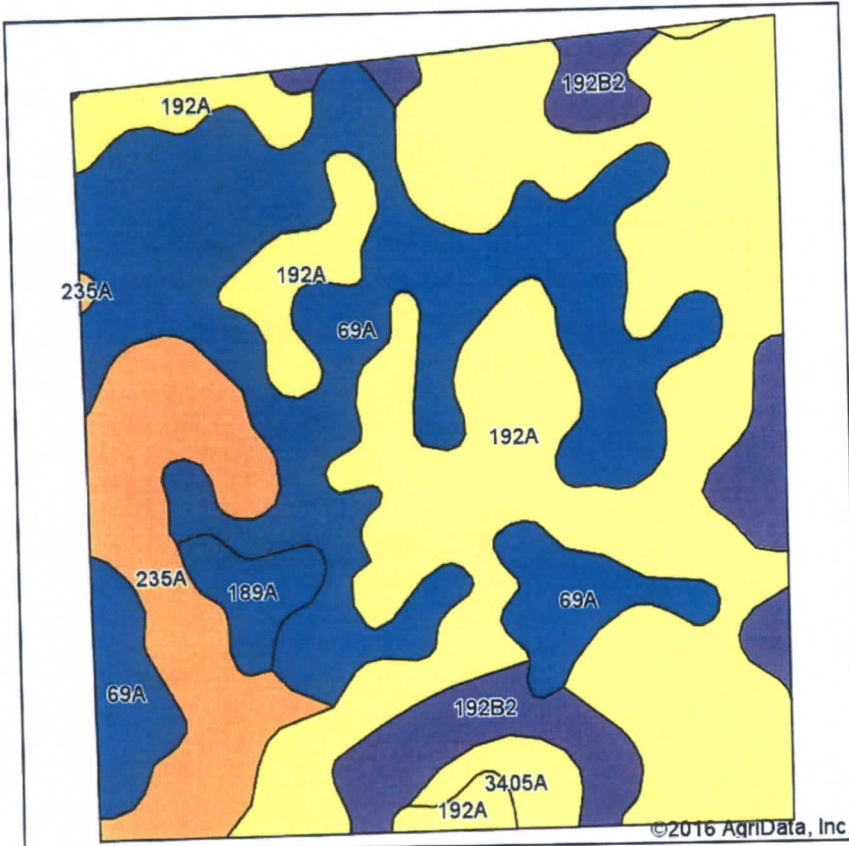
© AgriData, Inc. 2016 www.AgridataInc.com

29-25N-13W
Iroquois County
Illinois



2/8/2016

Soils Map



State: Illinois
 County: Iroquois
 Location: 29-25N-13W
 Township: Ash Grove
 Acres: 115.37
 Date: 2/8/2016

Maps Provided By:

 CUSTOMER ONLINE MAPPING
 © AgriData, Inc. 2016 www.AgrDataInc.com



Soils data provided by USDA and NRCS.

Area Symbol: IL075, Soil Area Version: 9

Code	Soil Description	Acres	Percent of field	Il. State Productivity Index Legend	Subsoil rooting a	Corn Bu/A	Soybeans Bu/A	Wheat Bu/A	Oats Bu/A	Sorghum c Bu/A	Alfalfa d hay, T/A	Grass-legume e hay, T/A	Crop productivity index for optimum management
192A	Del Rey silt loam, 0 to 2 percent slopes	50.32	43.6%	Yellow	FAV	151	50	61	74	0	0.00	4.64	113
69A	Milford silty clay loam, 0 to 2 percent slopes	38.27	33.2%	Dark Blue	FAV	171	57	68	88	0	0.00	5.52	128
235A	Bryce silty clay, 0 to 2 percent slopes	12.11	10.5%	Orange	FAV	162	54	64	82	0	0.00	4.77	121
**192B2	Del Rey silty clay loam, 2 to 6 percent slopes, eroded	10.32	8.9%	Dark Purple	FAV	**143	**48	**58	**70	0	0.00	**4.41	**107
189A	Martinton silt loam, 0 to 2 percent slopes	2.33	2.0%	Dark Blue	FAV	173	57	70	88	0	0.00	5.39	130
3405A	Zook silty clay, 0 to 2 percent slopes, frequently flooded	2.02	1.8%	Yellow	FAV	153	53	60	77	0	0.00	4.77	116
Weighted Average						158.6	52.8	63.5	79.5	0.00	4.94	118.7	

Area Symbol: IL075, Soil Area Version: 9

Table: Optimum Crop Productivity Ratings for Illinois Soil by K.R. Olson and J.M. Lang, Office of Research, ACES, University of Illinois at Champaign-Urbana. Version: 1/2/2012 Amended Table S2 B811

Crop yields and productivity indices for optimum management (B811) are maintained at the following NRES web site:
<https://www.ideals.illinois.edu/handle/2142/1027/>

** Indexes adjusted for slope and erosion according to Bulletin 811 Table S3
 a UNF = unfavorable; FAV = favorable

- b Soils in the southern region were not rated for oats and are shown with a zero "0".
- c Soils in the northern region or in both regions were not rated for grain sorghum and are shown with a zero "0".
- d Soils in the poorly drained group were not rated for alfalfa and are shown with a zero "0".
- e Soils in the well drained group were not rated for grass-legume and are shown with a zero "0".

*c: Using Capabilities Class Dominant Condition Aggregation Method