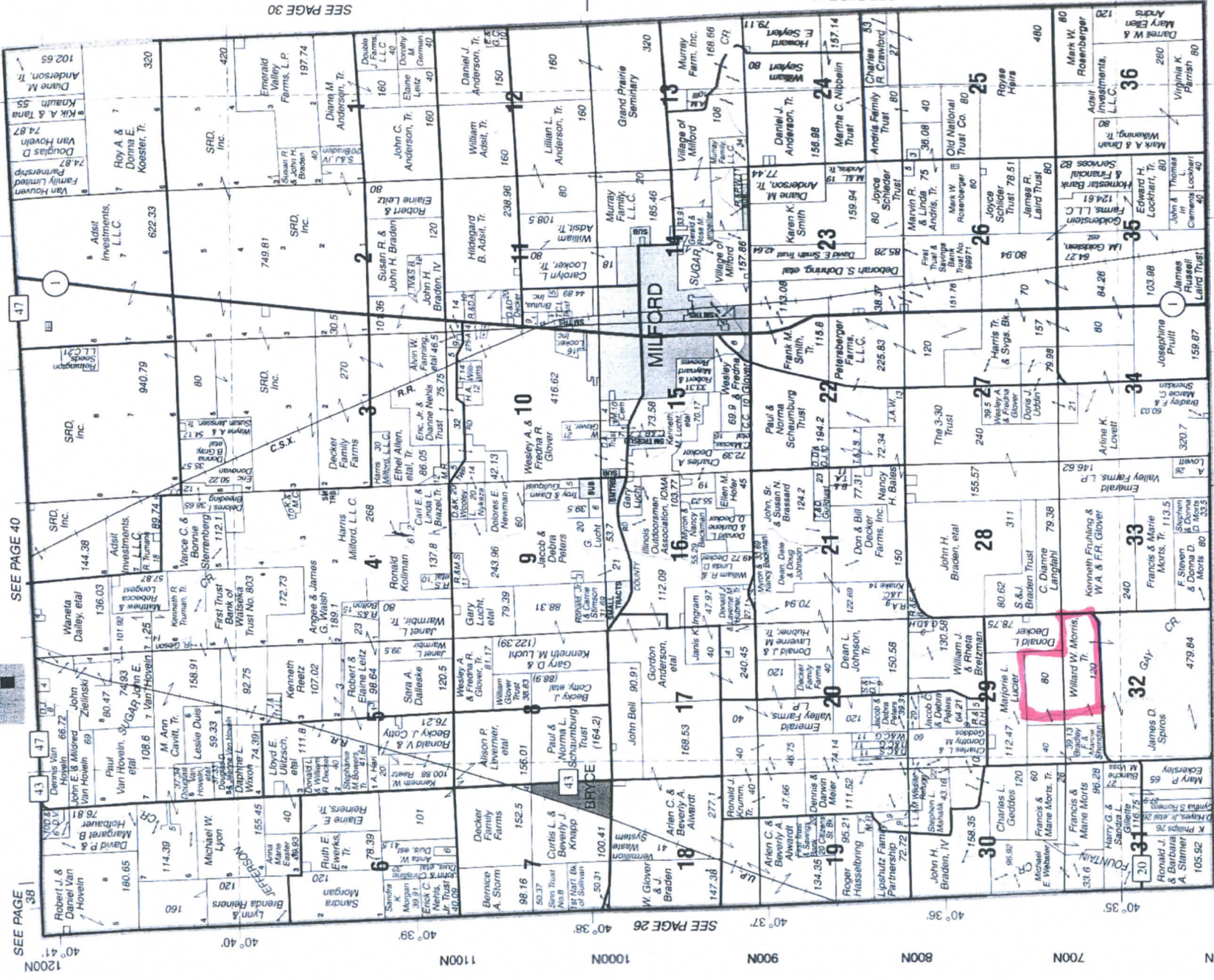


# MILFORD

# T.25N.-R.12W.



SEE PAGE 38

SEE PAGE 40

SEE PAGE 26

SEE PAGE 30

SEE PAGE 32

1900E 2000E 2100E 2200E 2300E 2400E 2500E

87° 40' 87° 41' 87° 42' 87° 43' 87° 44' 87° 45'

Ingham County, MI

© 2014 Rockford Map Publs., Inc.

### Aerial Map



©2016 AgriData, Inc.

map center: 40° 35' 20.77, 87° 44' 17.72



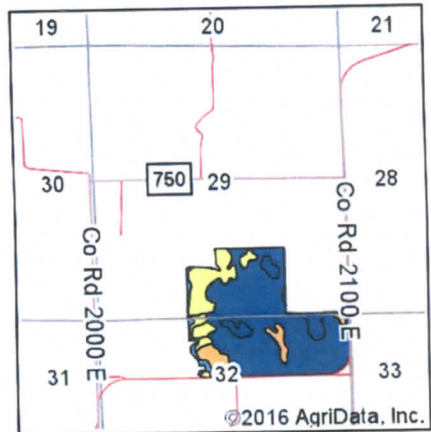
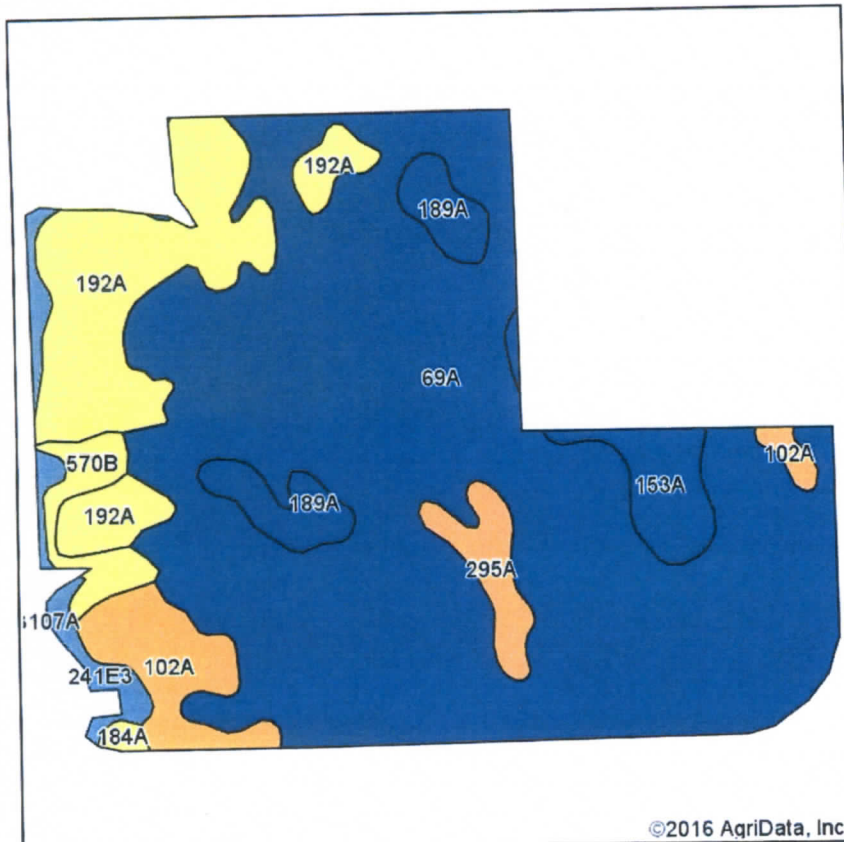
**29-25N-12W**  
**Iroquois County**  
**Illinois**



3/1/2016

Field borders provided by Farm Service Agency as of 5/21/2008. Soils data provided by University of Illinois at Champaign-Urbana.

# Soils Map



State: Illinois  
 County: Iroquois  
 Location: 29-25N-12W  
 Township: Milford  
 Acres: 149.62  
 Date: 3/1/2016

Maps Provided By:  
**surety**  
 CUSTOMIZED ONLINE MAPPING  
 © AgriData, Inc. 2016 www.AgrDataInc.com



Soils data provided by USDA and NRCS.

Area Symbol: IL075, Soil Area Version: 9

Code	Soil Description	Acres	Percent of field	Il. State Productivity Index Legend	Subsoil rooting a	Corn Bu/A	Soybeans Bu/A	Wheat Bu/A	Oats Bu/A	Sorghum c Bu/A	Alfalfa d hay, T/A	Grass-legu me e hay, T/A	Crop productivity index for optimum management
69A	Milford silty clay loam, 0 to 2 percent slopes	103.78	69.4%		FAV	171	57	68	88	0	0.00	5.52	128
192A	Del Rey silt loam, 0 to 2 percent slopes	18.65	12.5%		FAV	151	50	61	74	0	0.00	4.64	113
102A	La Hogue loam, 0 to 2 percent slopes	7.03	4.7%		FAV	162	52	71	80	0	0.00	5.27	121
189A	Martinton silt loam, 0 to 2 percent slopes	5.17	3.5%		FAV	173	57	70	88	0	0.00	5.39	130
153A	Pella clay loam, Glacial Lake Watseka, 0 to 2 percent slopes	4.58	3.1%		FAV	183	60	70	92	0	0.00	5.27	136
**241E3	Chatsworth silty clay, 12 to 20 percent slopes, severely eroded	3.36	2.2%		UNF	**64	**23	**23	**25	0	0.00	**2.05	**49
295A	Mokena silt loam, 0 to 2 percent slopes	3.32	2.2%		FAV	172	54	66	88	0	0.00	4.89	126
**570B	Martinsville loam, 2 to 4 percent slopes	3.27	2.2%		FAV	**153	**49	**62	**74	0	**4.47	0.00	**113
184A	Roby fine sandy loam, 0 to 2 percent slopes	0.46	0.3%		FAV	145	50	58	70	0	0.00	4.64	111
<b>Weighted Average</b>						<b>165.7</b>	<b>55</b>	<b>66.2</b>	<b>84.2</b>	<b>-</b>	<b>0.10</b>	<b>5.17</b>	<b>123.9</b>

Area Symbol: IL075, Soil Area Version: 9