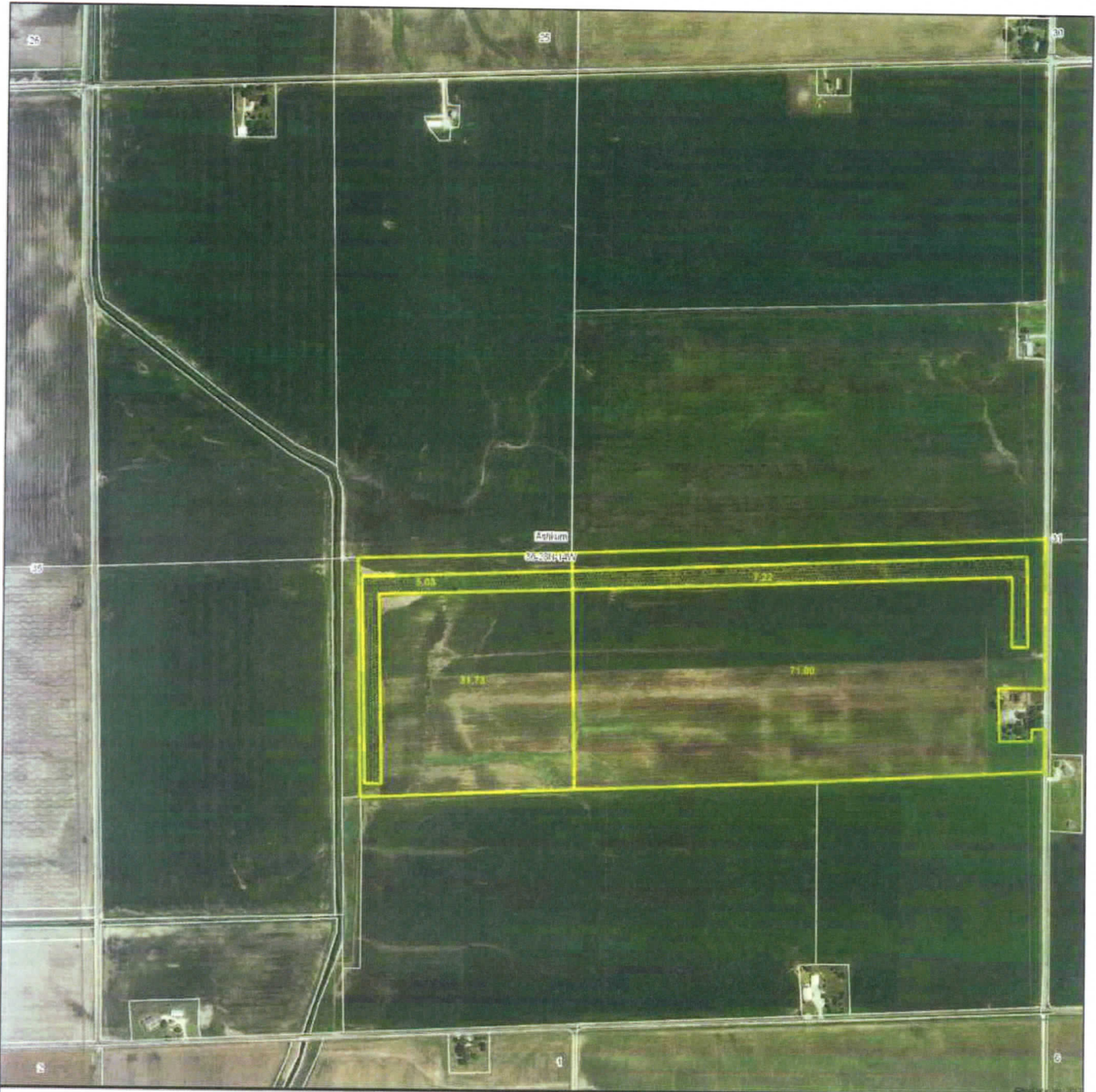


Aerial Map



map center: 40° 51' 51.89, 87° 53' 40.24

scale: 9975



12/18/2013

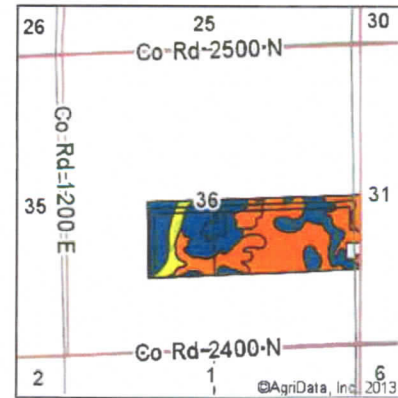
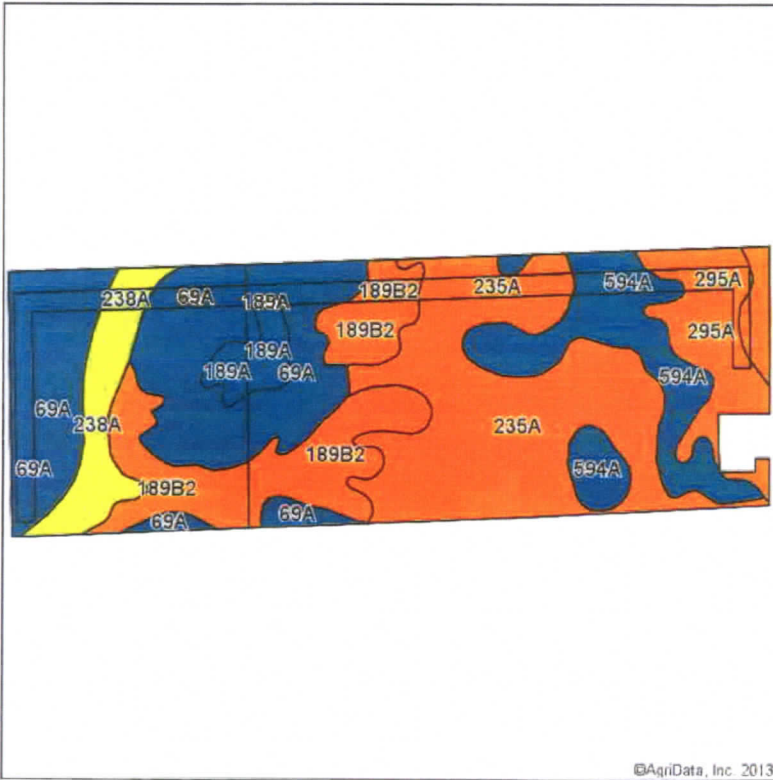
36-28N-14W
Iroquois County
Illinois

Maps Provided By:



Field borders provided by Farm Service Agency as of 5/21/2008. Aerial photography provided by Aerial Photography Field Office.

Soil Map



State: **Illinois**
 County: **Iroquois**
 Location: **36-28N-14W**
 Township: **Ashkum**
 Acres: **115.78**
 Date: **12/16/2013**



Maps Provided By:

 CUSTOMIZED ONLINE MAPPING
 © AgriData, Inc. 2013 www.AgriDataInc.com

Soils data provided by USDA and NRCS.

Code	Soil Description	Acres	Percent of field	Il. State Productivity Index Legend	Subsoil rooting ^a	Corn Bu/A	Soybeans Bu/A	Wheat Bu/A	Oats Bu/A ^b	Sorghum ^c Bu/A	Alfalfa ^d hay, T/A	Grass-legume ^e hay, T/A	Crop productivity index for optimum management
235A	Bryce silty clay, 0 to 2 percent slopes	33.49	28.9%	■	FAV	162	54	64	82	0	0.00	4.77	121
69A	Milford silty clay loam, 0 to 2 percent slopes	31.38	27.1%	■	FAV	171	57	68	88	0	0.00	5.52	128
**189B2	Martinton silty clay loam, 2 to 4 percent slopes, eroded	17.91	15.5%	■	FAV	**164	**54	**67	**84	0	0.00	**5.12	**124
594A	Reddick clay loam, 0 to 2 percent slopes	14.54	12.6%	■	FAV	177	56	66	89	0	0.00	5.14	130
295A	Mokena silt loam, 0 to 2 percent slopes	8.51	7.4%	■	FAV	172	54	66	88	0	0.00	4.89	126
238A	Rantoul silty clay, 0 to 2 percent slopes	6.98	6.0%	■	FAV	144	49	56	64	0	0.00	4.14	109
189A	Martinton silt loam, 0 to 2 percent slopes	2.27	2.0%	■	FAV	177	56	66	89	0	0.00	5.14	130
Weighted Average						166.6	54.8	65.6	84.3	0	0.00	5.06	124.4

Table. Optimum Crop Productivity Ratings for Illinois Soil by I.R. Olson and J.M. Lang, Office of Research, ACEA, University of Illinois at Champaign-Urbana. Version: 12/2012 Amended Table S2 B811 (Updated 1/10/2012)
 189A yields and productivity indices for optimum management (B811) are maintained at the following NRCS web site: <http://soilproductivity.nres.illinois.edu>

****** Indexes adjusted for slope and erosion according to Bulletin 811 Table S3
^a UNF = unfavorable; FAV = favorable
^b Soils in the southern region were not rated for oats and are shown with a zero "0".
^c Soils in the northern region or in both regions were not rated for grain sorghum and are shown with a zero "0".

CENTRAL PART ASHKUM

T.28N.-R.14W.

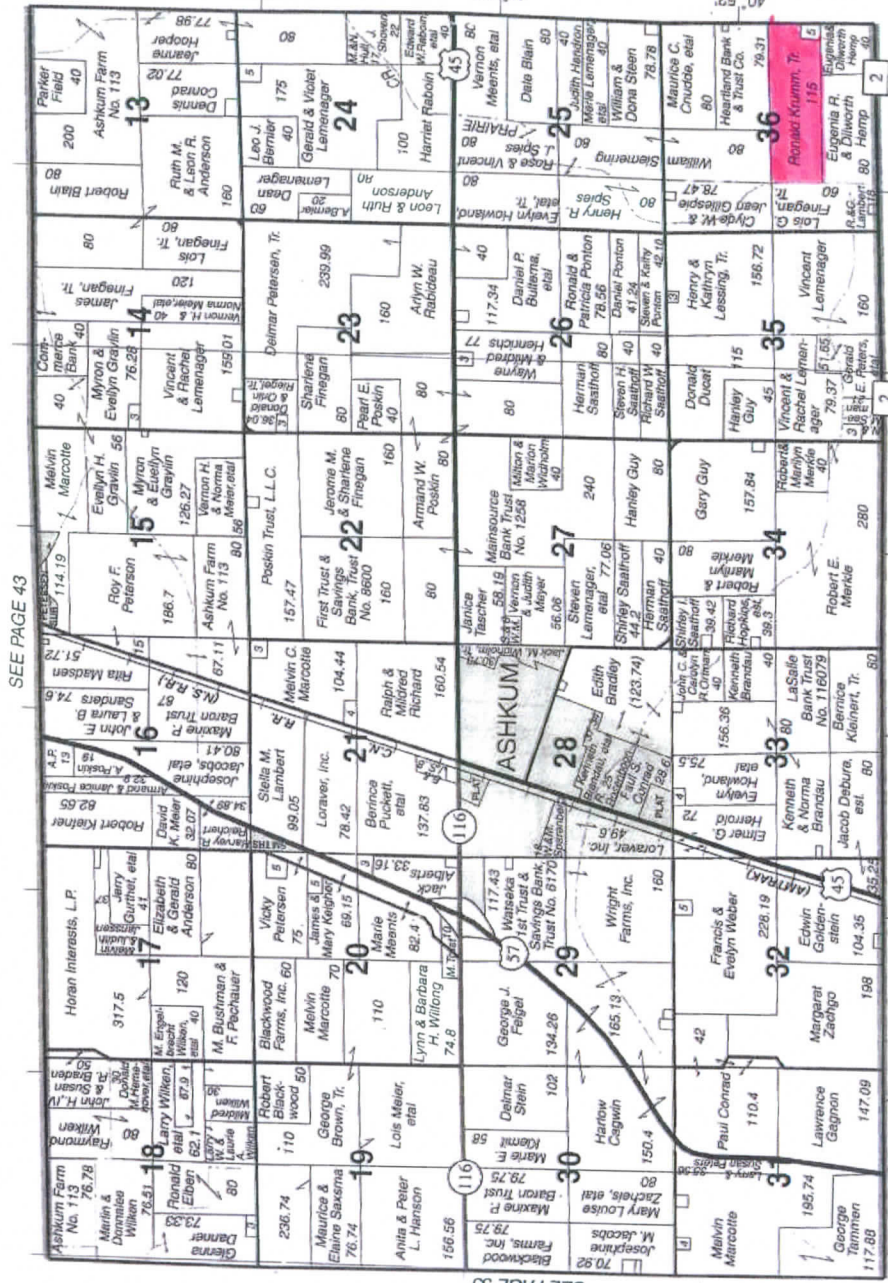
2800N

2700N

2600N

2500N

2400N



SEE PAGE 43

SEE PAGE 35

SEE PAGE 38

700E 87° 59' 800E 87° 58' 900E 87° 57' 1000E 87° 56' 1100E 87° 55' 1200E 87° 54' 1300E

© 2006 Rockford Map Pubs., Inc.

SEE PAGE 30

Iroquois County, IL