

T.21N.-R.11W.

NORTH PART NEWELL

SEE PAGE 70

2800N

40' 16"

2700N

1600E

SEE PAGE 8

2600N

87° 38'

© 2011 Rockford Map Pubs., Inc.

1700E

1800E

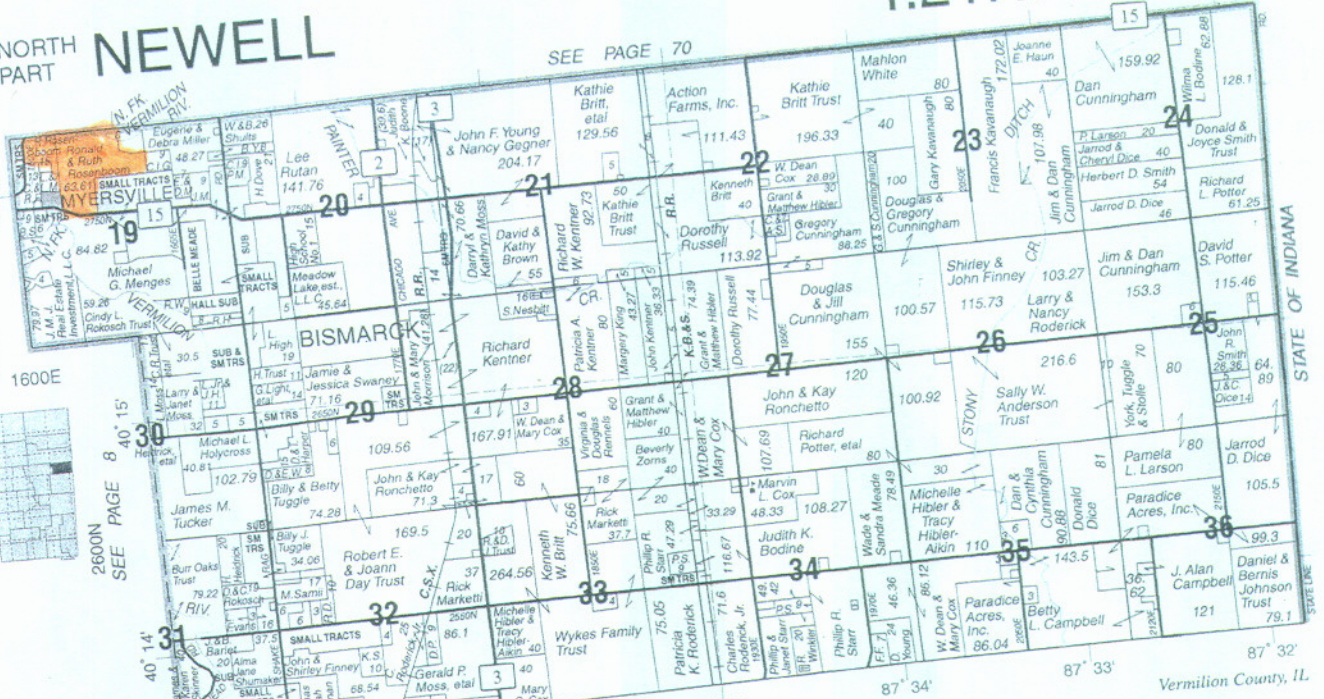
SEE PAGE 50

1900E

2000E

2100E

2200E

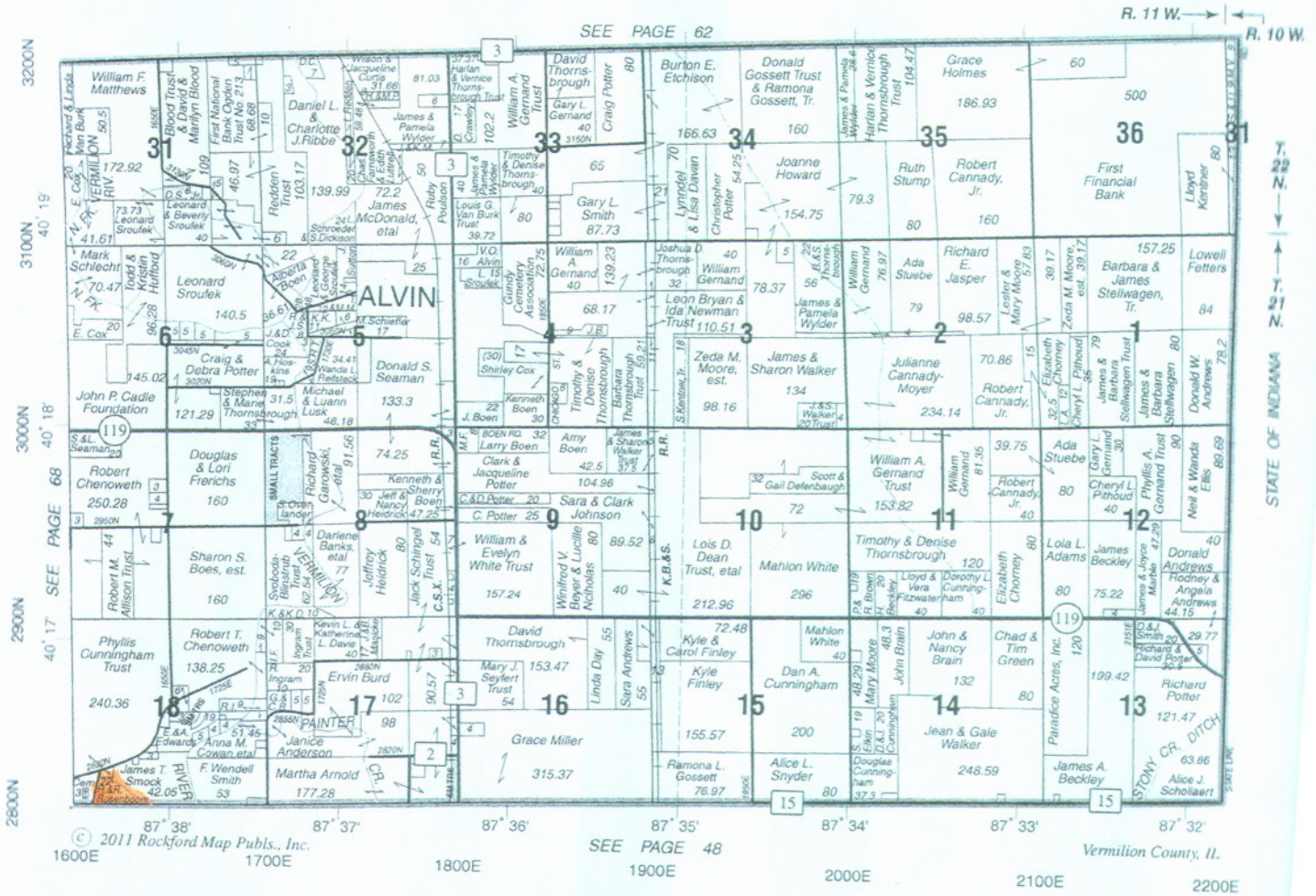


STATE OF INDIANA

Vermilion County, IL

EAST PART SOUTH ROSS

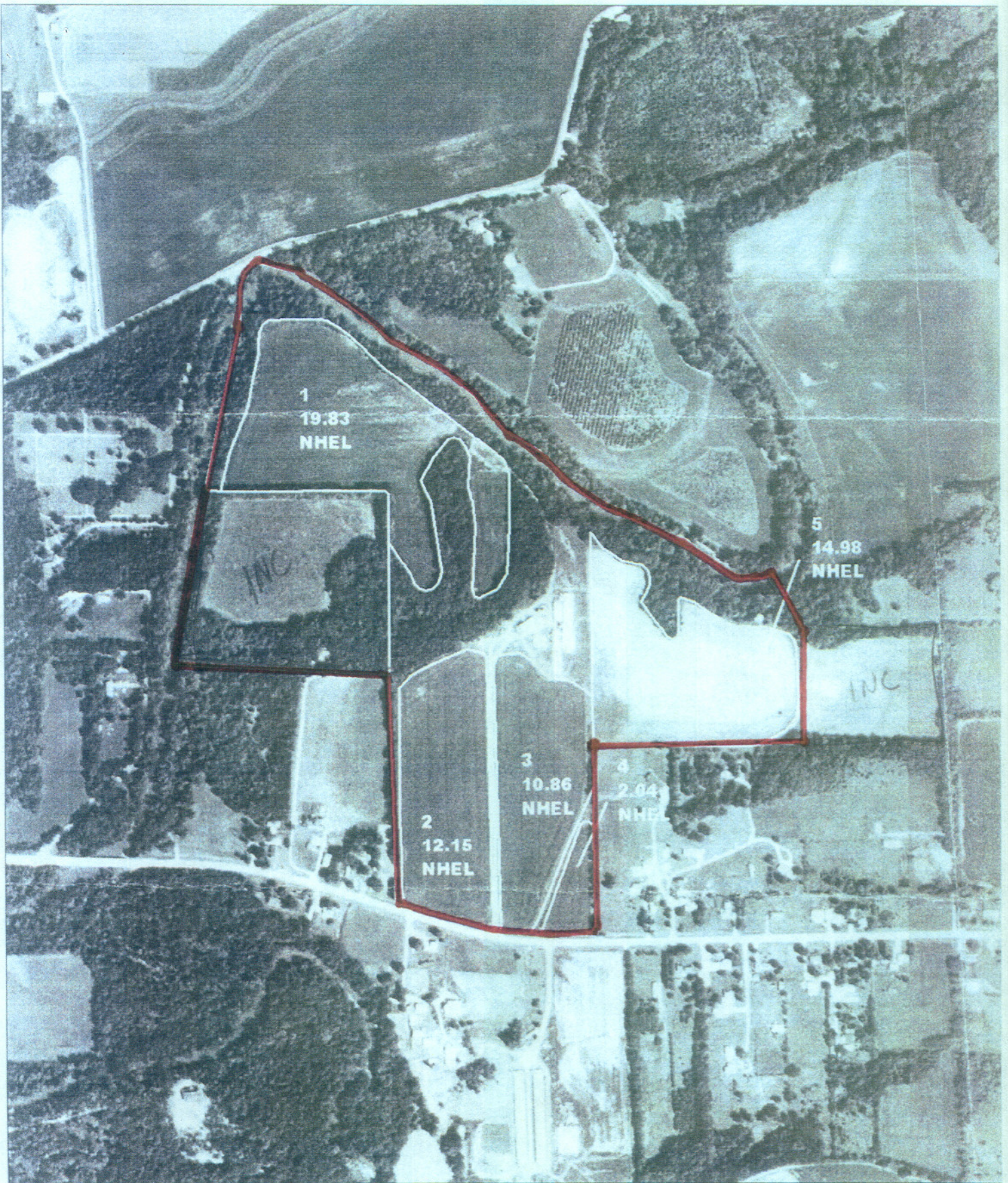
T.21-22N.-R.11-10W.



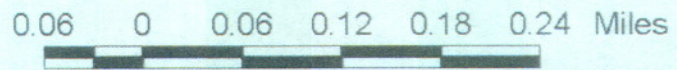
© 2011 Rockford Map Publs., Inc.

SEE PAGE 48

Vermilion County, IL

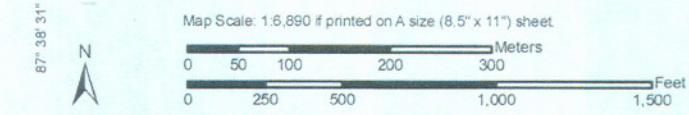
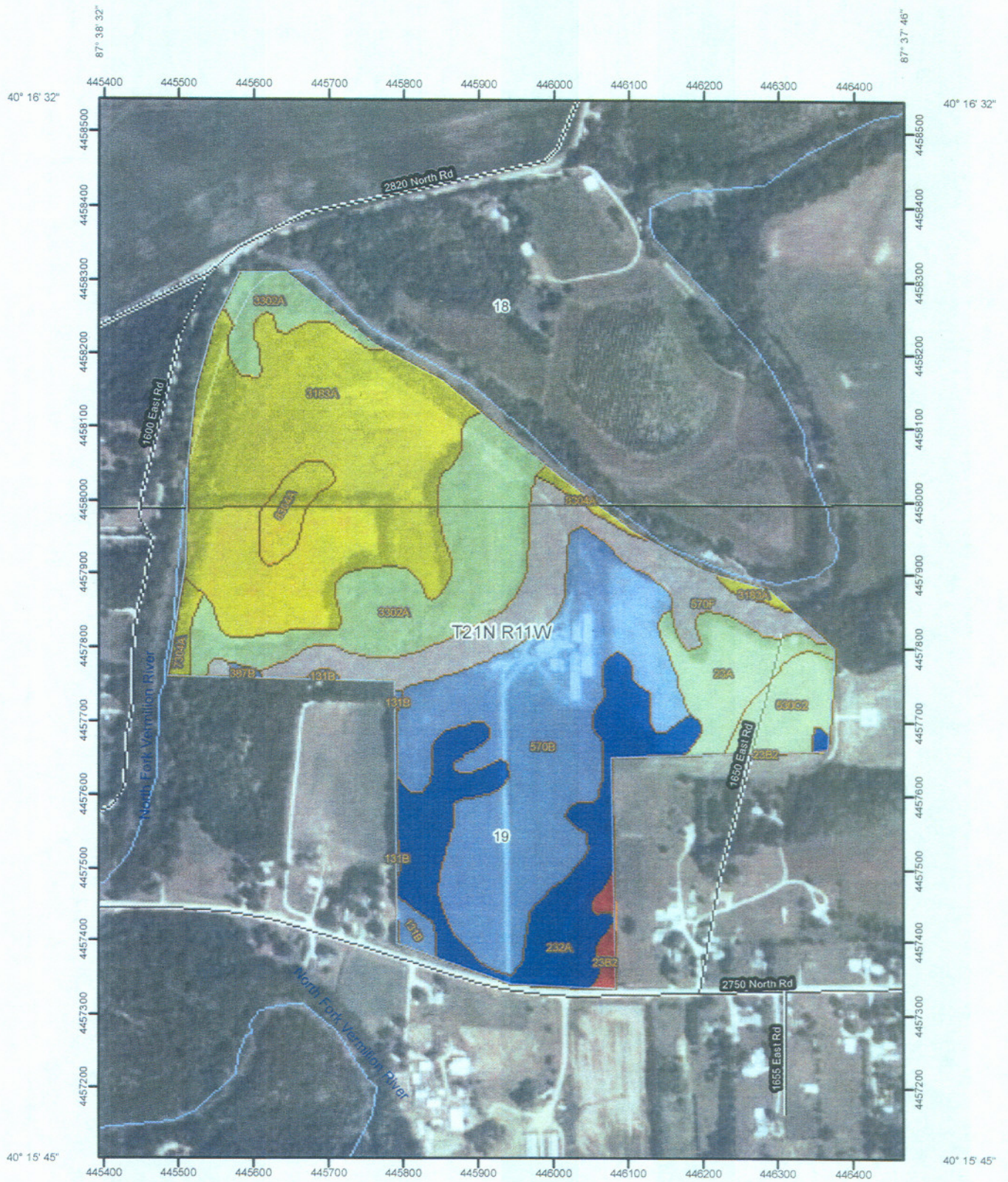


Tract 10650
Farm 10187



Map Printed: Aug 20, 2008

Yields of Non-Irrigated Crops (Component): Corn (Bu)—Vermilion County, Illinois



Yields of Non-Irrigated Crops (Component): Corn (Bu)

Yields of Non-Irrigated Crops (Component): Corn (Bu)— Summary by Map Unit — Vermillion County, Illinois				
Map unit symbol	Map unit name	Rating	Acres in AOI	Percent of AOI
23A	Blount silt loam, 0 to 2 percent slopes	125.00	4.9	4.7%
23B2	Blount silt loam, 2 to 4 percent slopes, eroded	119.00	0.8	0.7%
131B	Alvin fine sandy loam, 2 to 5 percent slopes	134.00	0.9	0.9%
232A	Ashkum silty clay loam, 0 to 2 percent slopes	154.00	12.8	12.2%
387B	Ockley silt loam, 2 to 5 percent slopes	139.00	0.1	0.1%
530C2	Ozaukee silt loam, 4 to 6 percent slopes, eroded	127.00	3.3	3.1%
570B	Martinsville silt loam, 2 to 5 percent slopes	139.75	24.5	23.3%
570F	Martinsville loam, 18 to 35 percent slopes		10.2	9.7%
3183A	Shaffton loam, 0 to 2 percent slopes, frequently flooded	122.91	28.9	27.5%
3302A	Ambraw loam, 0 to 2 percent slopes, frequently flooded	125.00	15.7	14.9%
7304A	Landes fine sandy loam, 0 to 2 percent slopes, rarely flooded	121.00	0.8	0.7%
8304A	Landes fine sandy loam, 0 to 2 percent slopes, occasionally flooded	121.00	2.3	2.2%
Totals for Area of Interest			105.1	100.0%

