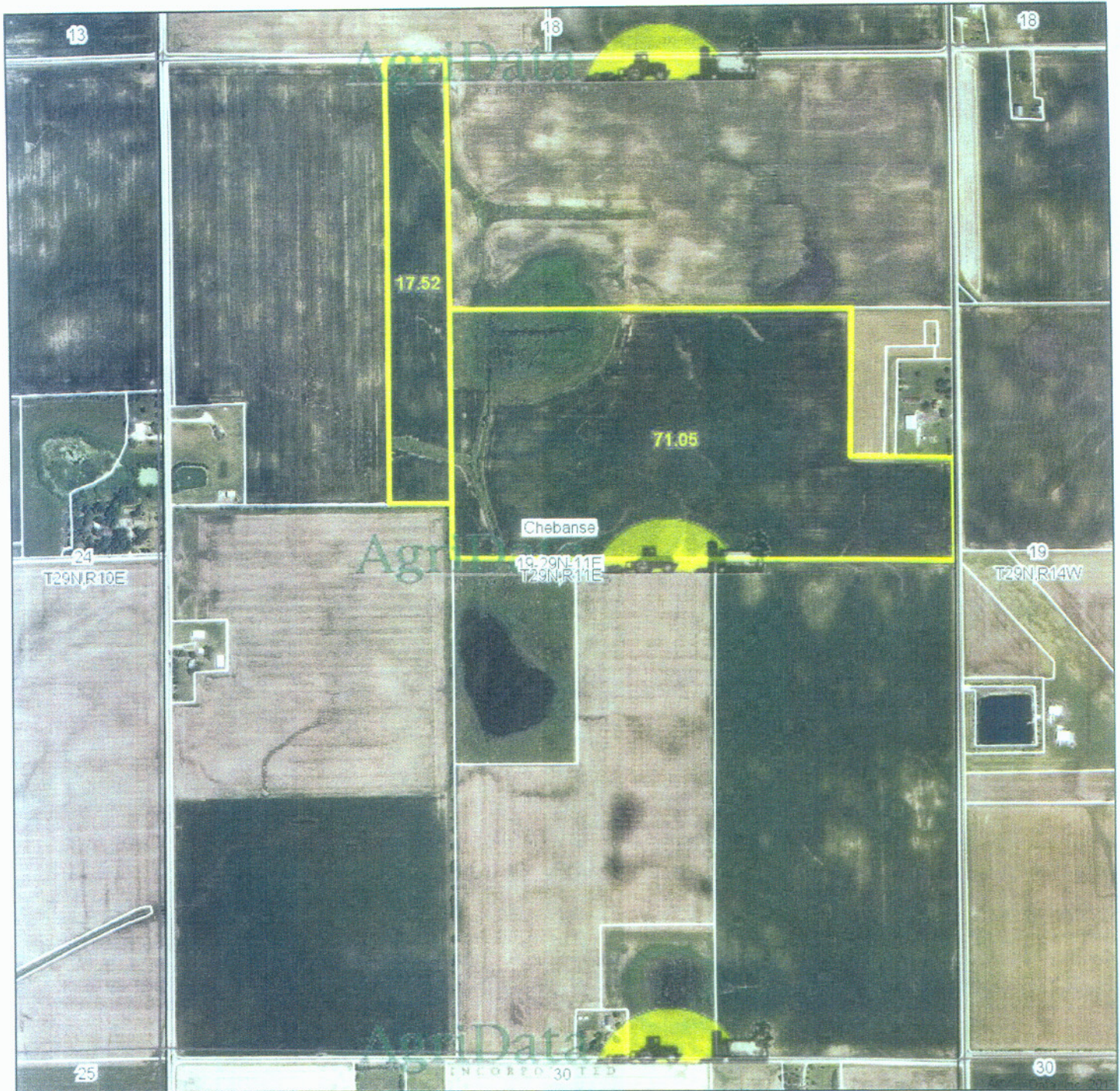


Aerial Map



map center: 40° 58' 41.21, 88° 0' 33.1

scale: 10035

Maps provided by:



©AgriData, Inc. 2012

www.AgriDataInc.com

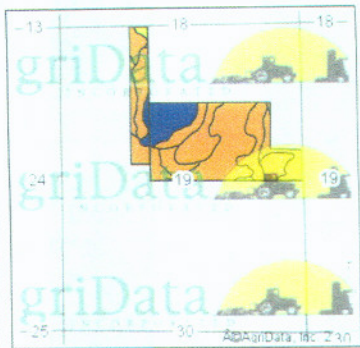
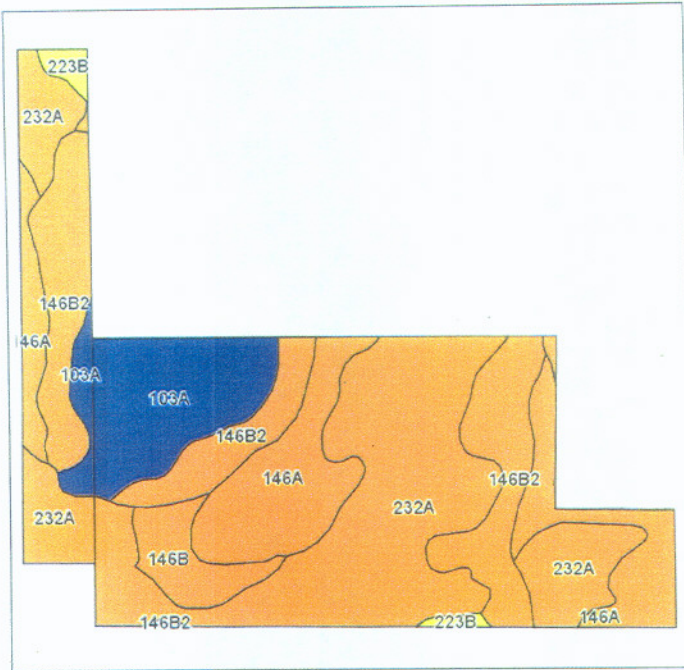
19-29N-11E
Iroquois County
Illinois



9/25/2013

Field borders provided by Farm Service Agency as of 5/21/2008. Aerial photography provided by Aerial Photography Field Office.

Soils Map



State: **Illinois**
 County: **Iroquois**
 Location: **19-29N-11E**
 Township: **Chebanse**
 Acres: **88.57**
 Date: **9/25/2013**

Field borders provided by Farm Service Agency as of 5/21/2008.
 Soils data provided by University of Illinois at Champaign-Urbana.



Code	Soil Description	Acres	Percent of field	Il. State Productivity Index Legend	Subsoil rooting ^a	Corn Bu/A	Soybeans Bu/A	Wheat Bu/A	Oats Bu/A ^b	Sorghum ^c Bu/A	Alfalfa ^d hay, T/A	Grass-legume ^e hay, T/A	Crop productivity index for optimum management
232A	Ashkum silty clay loam, 0 to 2 percent slopes	35.74	40.4%		FAV	170	56	65	85	0	0.00	5.14	127
**146B2	Elliott silty clay loam, 2 to 4 percent slopes, eroded	18.45	20.8%		FAV	**160	**52	**65	**83	0	0.00	**4.77	**119
146A	Elliott silt loam, 0 to 2 percent slopes	17.74	20.0%		FAV	168	55	68	87	0	0.00	5.02	128
103A	Houghton muck, 0 to 2 percent slopes	11.71	13.2%		FAV	175	57	0	0	0	0.00	0.00	130
**146B	Elliott silt loam, 2 to 4 percent slopes	3.85	4.3%		FAV	**166	**54	**67	**86	0	0.00	**4.97	**124
**223B	Varna silt loam, 2 to 4 percent slopes	1.08	1.2%		FAV	**156	**50	**63	**78	0	**4.84	0.00	**119
Weighted Average						167.8	54.9	57.1	73.7	0	0.06	4.29	125.7

Table: Optimum Crop Productivity Ratings for Illinois Soil by K.R. Olson and J.M. Lang, Office of Research, ACES, University of Illinois at Champaign-Urbana
 Version: 1/2/2012 Amended Table S2 B811 (Updated 1/10/2012)
 Crop yields and productivity indices for optimum management (B811) are maintained at the following NRES web site: <http://soilproductivity.nres.illinois.edu/>
 ** Indexes adjusted for slope and erosion according to Bulletin 811 Table S3
^a UNF = unfavorable; FAV = favorable
^b Soils in the southern region were not rated for oats and are shown with a zero "0".
^c Soils in the northern region or in both regions were not rated for grain sorghum and are shown with a zero "0".
^d Soils in the poorly drained group were not rated for alfalfa and are shown with a zero "0".
^e Soils in the well drained group were not rated for grass-legume and are shown with a zero "0".