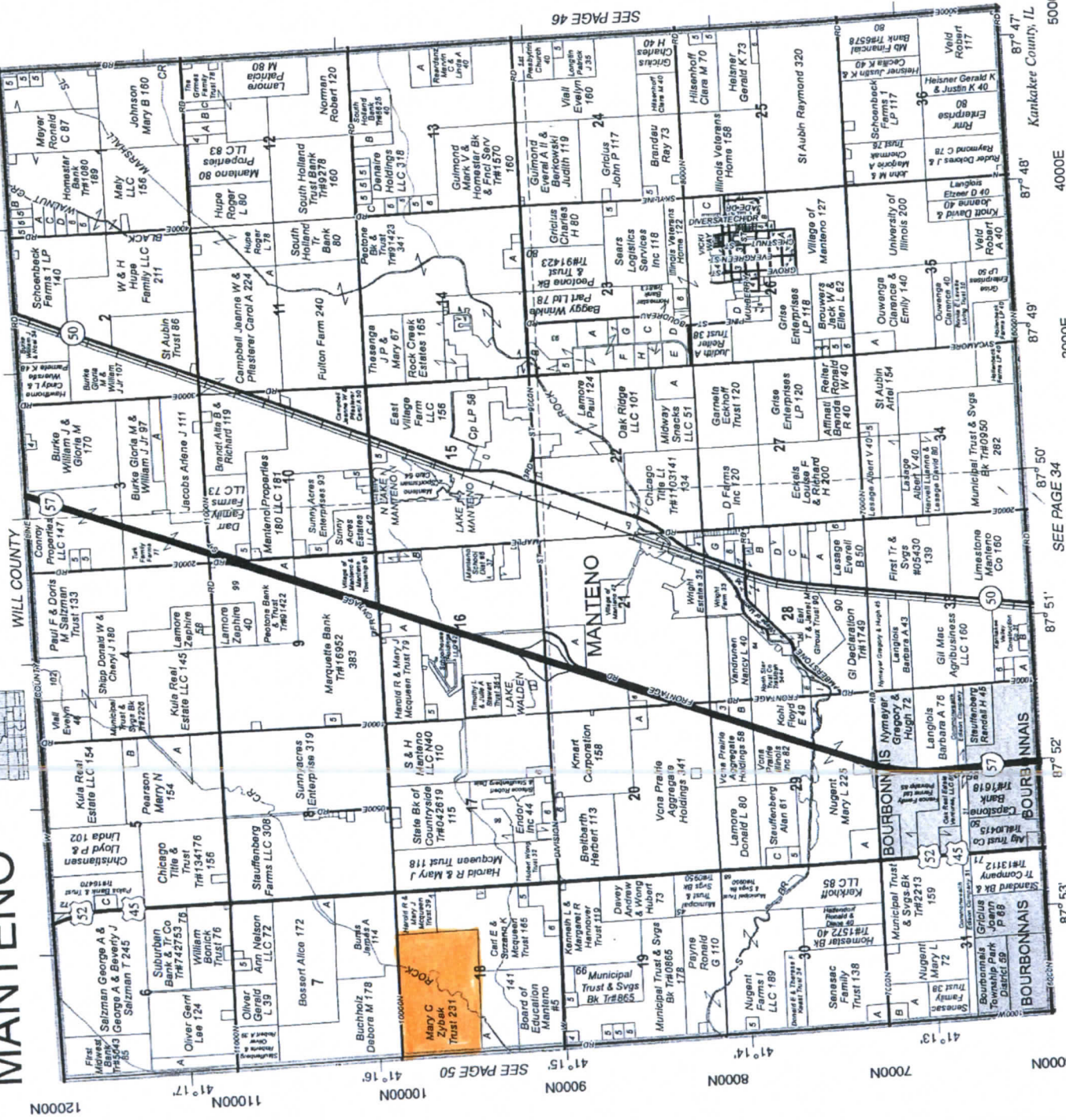


T.32N.-R.12E.

MANTENO



SEE PAGE 46

SEE PAGE 50

© 2011 Rockford Map Pubs., Inc.
00000

12000N
11000N
10000N
9000N
8000N
7000N
6000N
5000N

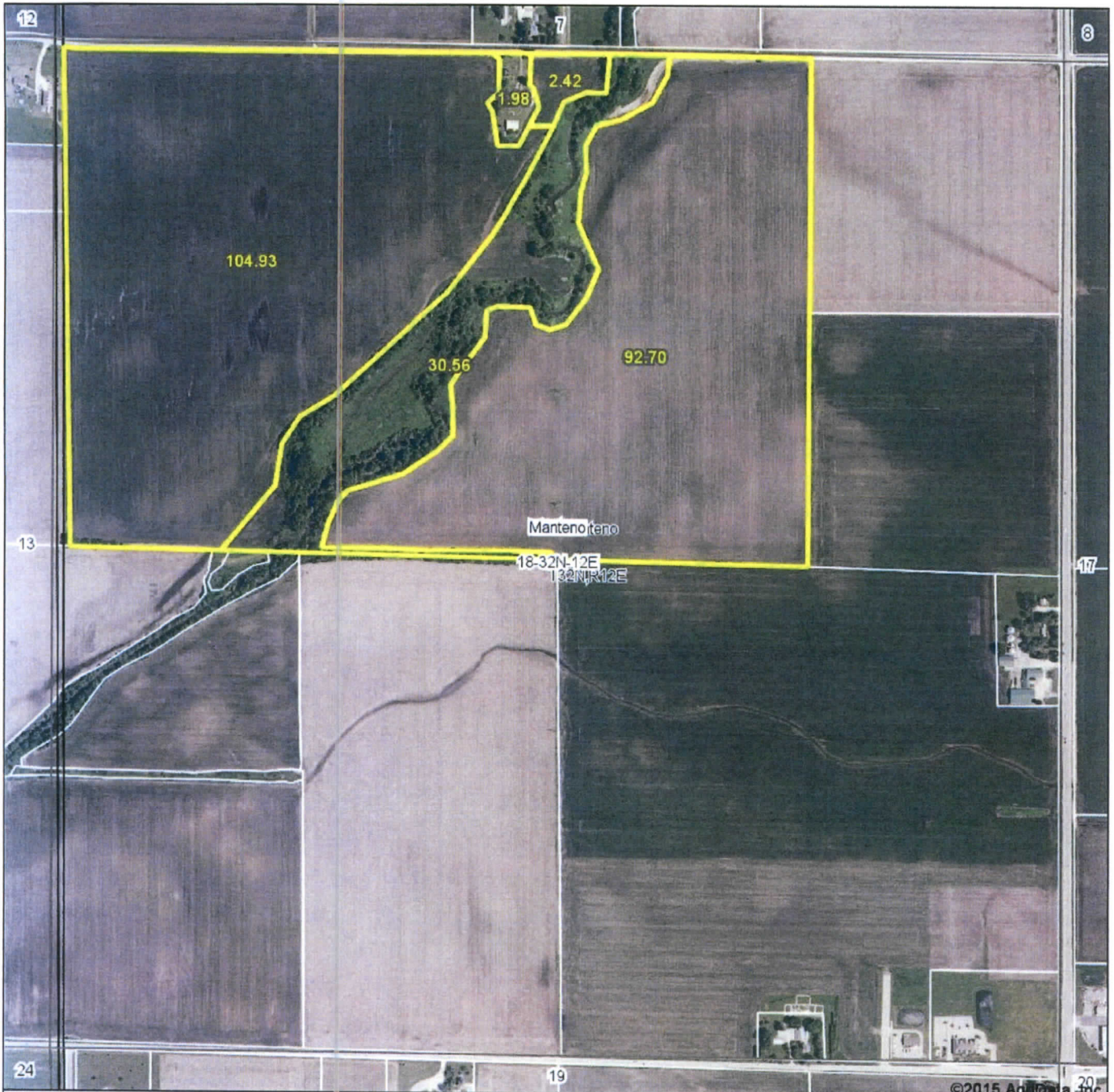
41° 17'
41° 16'
41° 15'
41° 15'
41° 14'
41° 13'

87° 53'
87° 52'
87° 51'
87° 50'
87° 49'
87° 49'
87° 48'
87° 47'

1000E
2000E
3000E
4000E
5000E

WILL COUNTY
KANKAKEE COUNTY, IL

Aerial Map



map center: 41° 15' 26.97, 87° 53' 14.81

scale: 9404



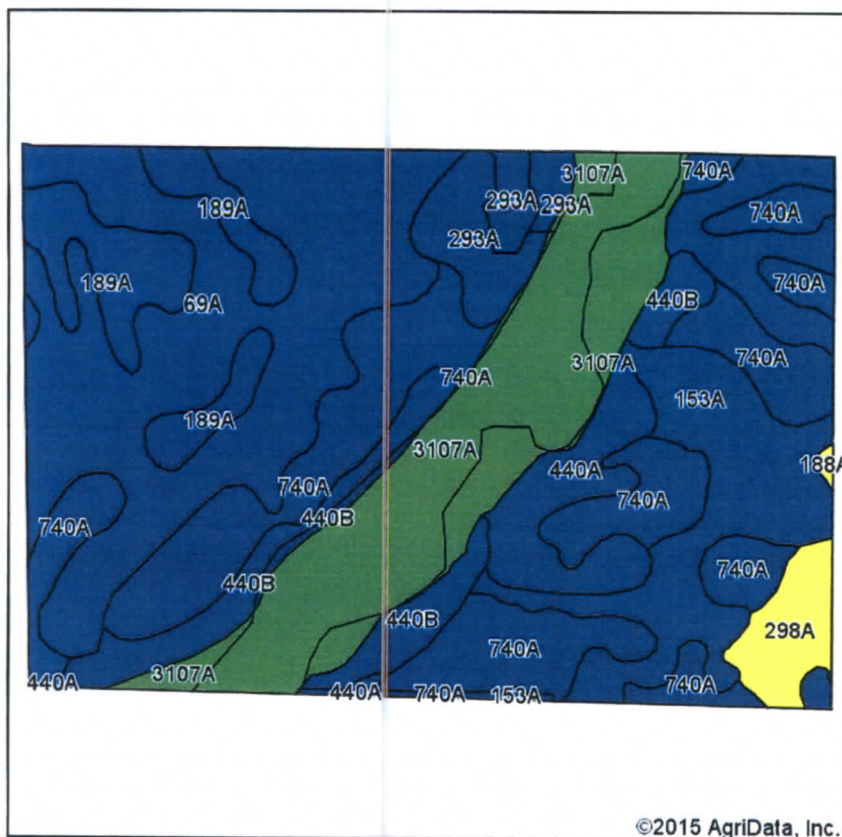
10/8/2015

Maps Provided By:
 **surety**[®]
 CUSTOMIZED ONLINE MAPPING
 © AgriData, Inc. 2015 www.AgrDataInc.com

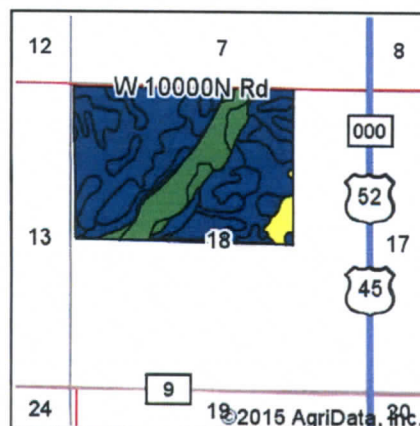
18-32N-12E
Kankakee County
Illinois

Field borders provided by Farm Service Agency as of 5/21/2008. Soils data provided by University of Illinois at Champaign-Urbana.

Soil Map



Soils data provided by USDA and NRCS.



State: Illinois
 County: Kankakee
 Location: 18-32N-12E
 Township: Manteno
 Acres: 232.59
 Date: 10/8/2015

Maps Provided By:
surety
 CUSTOMIZED ONLINE MAPPING
 © AgriData, Inc 2015 www.AgriDataInc.com



Area Symbol: IL091, Soil Area Version: 10

Code	Soil Description	Acres	Percent of field	Il. State Productivity Index Legend	Subsoil rooting a	Corn Bu/A	Soybeans Bu/A	Wheat Bu/A	Oats Bu/A	Sorghum c Bu/A	Alfalfa d hay, T/A	Grass-legume e hay, T/A	Crop productivity index for optimum management
69A	Milford silty clay loam, 0 to 2 percent slopes	53.38	23.0%		FAV	171	57	68	88	0	0.00	5.52	128
740A	Darroch silt loam, 0 to 2 percent slopes	51.79	22.3%		FAV	177	57	70	92	0	0.00	5.14	129
3107A	Sawmill silty clay loam, 0 to 2 percent slopes, frequently flooded	40.56	17.4%		FAV	189	60	71	98	0	0.00	5.77	139
153A	Pella silty clay loam, 0 to 2 percent slopes	30.65	13.2%		FAV	183	60	70	92	0	0.00	5.27	136
189A	Martinton silt loam, 0 to 2 percent slopes	15.35	6.6%		FAV	173	57	70	88	0	0.00	5.39	130
**440B	Jasper loam, 2 to 5 percent slopes	14.76	6.3%		FAV	**173	**56	**70	**93	0	**5.71	0.00	**129
440A	Jasper loam, 0 to 2 percent slopes	10.55	4.5%		FAV	175	57	71	94	0	5.77	0.00	130
293A	Andres silt loam, 0 to 2 percent slopes	9.30	4.0%		FAV	184	59	71	97	0	0.00	5.39	135
298A	Beecher silt loam, 0 to 2 percent slopes	5.98	2.6%		FAV	152	51	61	79	0	0.00	4.64	114
188A	Beardstown silt loam, 0 to 2 percent slopes	0.27	0.1%		FAV	152	50	63	78	0	4.89	0.00	114
Weighted Average						177.5	57.8	69.6	91.9	*	0.63	4.80	131.4

Area Symbol: IL091, Soil Area Version: 10