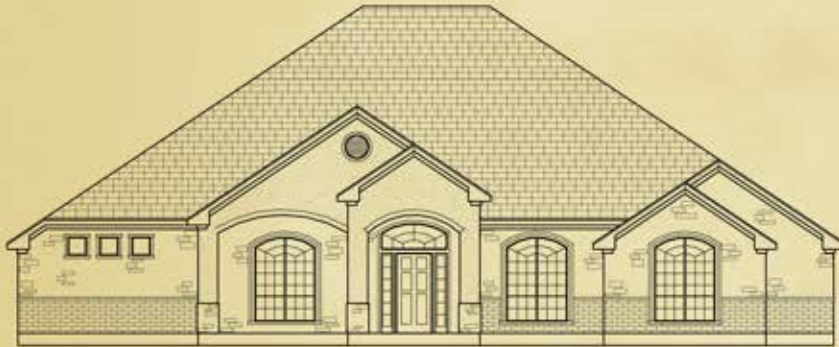


# EXECUTIVE SERIES

Live Comfortably.

# THE Cedar Creek 2896



## PLAN HIGHLIGHTS

**4 Bedroom + Flex**

**3 Bathroom**

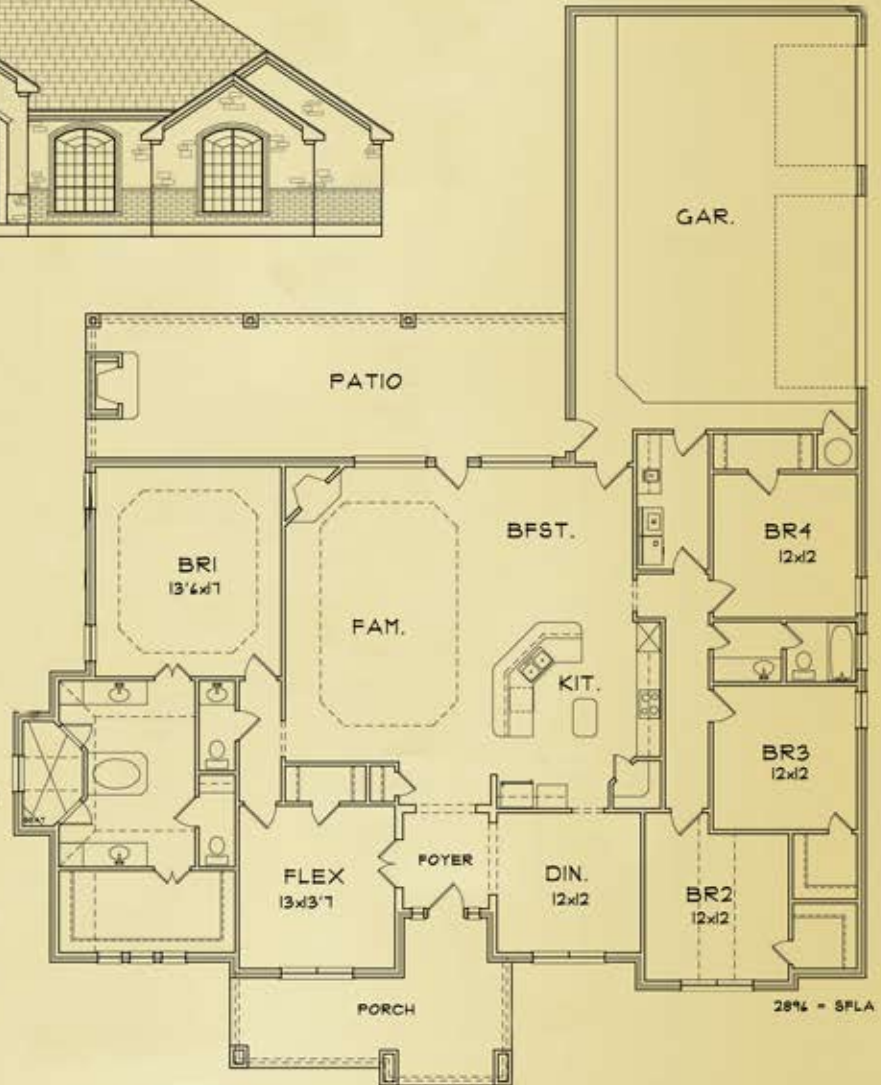
**3 Car Garage**

**2896 sq.ft.**

All room sizes are estimates of approximate square footage, appraisal will be sole source of exact sq. ft. For illustration purposes only.

Specs are subject to change.

2/28/2015



*Ashford Homes*

Sales Contact: Bradley Sheppard, REALTOR, Associate Broker, Better Homes & Gardens - Bradfield Properties  
Call: 254-300-7585 | [bradley@bradfieldproperties.com](mailto:bradley@bradfieldproperties.com) | 3011 N. Main St. Suite A Belton, TX 76513  
Ashford Homes | 3800 E. Stan Schlueter Loop, Suite 107 Killeen, TX 76542-4558 | 254-699-8485 | [AshfordHomesTexas.com](http://AshfordHomesTexas.com)

**Better  
Homes  
and Gardens**  
REAL ESTATE

**BRADFIELD  
PROPERTIES**