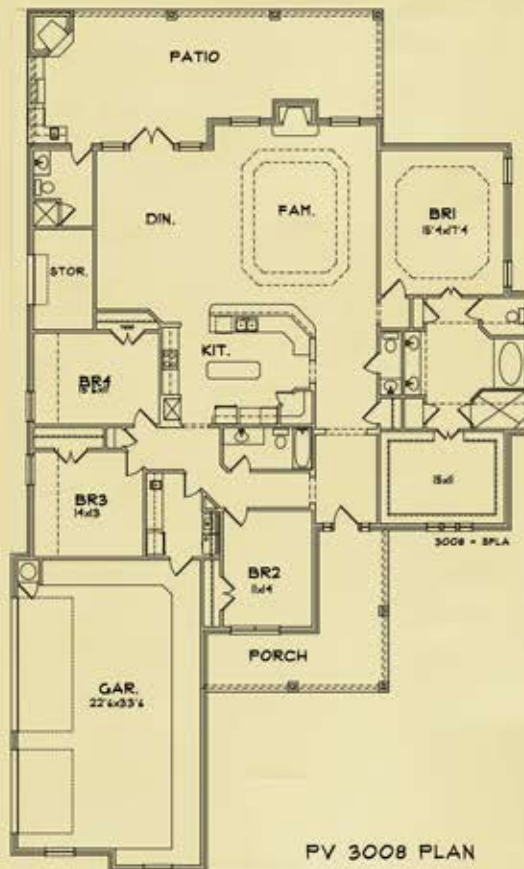


Live Comfortably.
Rest Assured.

THE Hickory Creek 3008



PLAN HIGHLIGHTS

4 Bedroom
4 Bathroom
3 Car Garage
3008 sq.ft.

All room sizes are estimates of approximate square footage, appraisal will be sole source of exact sq. ft. For illustration purposes only. Specs are subject to change. 06/08/2015



Sales Contact: Bradley Sheppard, REALTOR, Associate Broker, Better Homes & Gardens - Bradfield Properties
Call: 254-300-7585 | bradley@bradfieldproperties.com | 3011 N. Main St. Suite A Belton, TX 76513
Ashford Homes | 3800 E. Stan Schlueter Loop, Suite 107 Killeen, TX 76542-4558 | 254-699-8485 | AshfordHomesTexas.com

