

Live Comfortably.
Rest Assured.

THE Sims Creek

1848



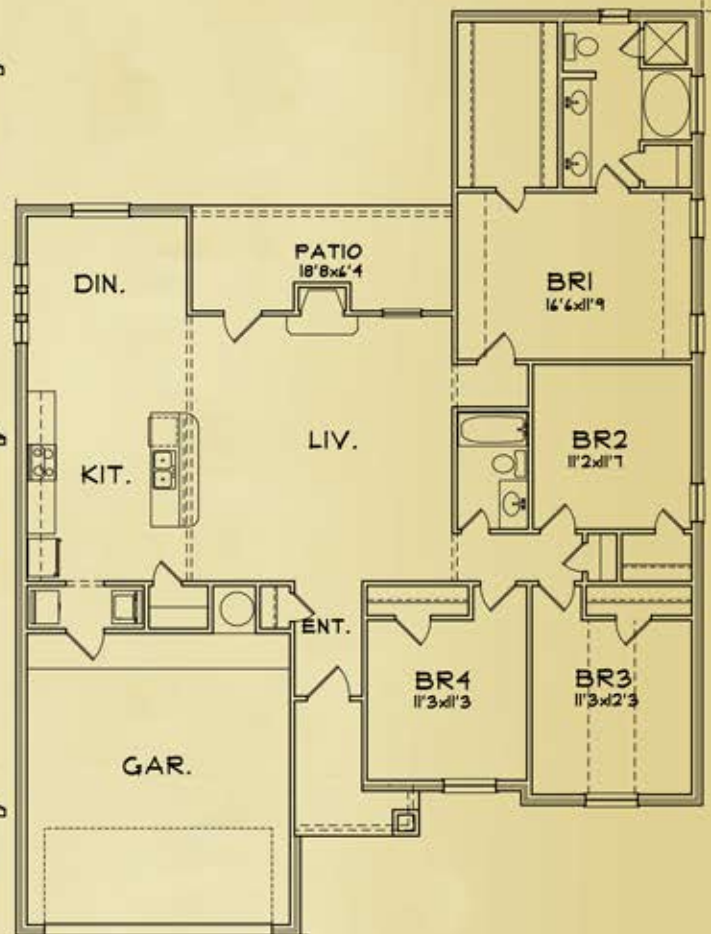
ELEVATION A



ELEVATION B



ELEVATION C



BUILDER RESERVES THE RIGHT TO CHANGE PLANS, SPECIFICATIONS, AND PRICES WITHOUT NOTICE.
ALL ROOM SIZES ARE ESTIMATES OF APPROXIMATE SQUARE FOOTAGE, APPRAISAL WILL BE SOLE SOURCE OF EXACT SQ. FT.

All room sizes are estimates of
approximate square footage, appraisal
will be sole source of exact sq. ft.

For illustration purposes only.

Specs are subject to change.

3/5/2014

PLAN HIGHLIGHTS

4 Bedroom
2 Bathroom
2 Car Garage
1848 sq.ft.


Ashford Homes

Sales Contact: Bradley Sheppard, REALTOR, Associate Broker, Better Homes & Gardens - Bradfield Properties
Call: 254-300-7585 | bradley@bradfieldproperties.com | 3011 N. Main St. Suite A Belton, TX 76513
Ashford Homes | 3800 E. Stan Schlueter Loop, Suite 107 Killeen, TX 76542-4558 | 254-699-8485 | AshfordHomesTexas.com

**Better
Homes
and Gardens**
REAL ESTATE

**BRADFIELD
PROPERTIES**