

Crossley Ranch



Quiet and Peaceful Setting!

The Luxury Mini Ranch has 293.45± acres and is located in a tranquil setting along the Little Wood River with gorgeous views of the Sawtooth mountain range. The Little Wood River runs through the property with the Little Wood Reservoir minutes away. There are 1912 priority date water rights with .86 CFS, in addition to 43± acres under a pivot that grows grass hay. This impressive Ranch has it all and only 1± hour to world famous Sun Valley with great skiing, hiking to high mountain lakes and when your finished with your fun filled days, fine dining. Airport and St. Luke's Wood River Medical Center within 1 hours drive. This is a unique and wonderful place to call home!



A Home to Fit Your Lifestyle!

There is a beautiful 2003 built home with 4168 SF that offers 5 bedrooms and 4 baths with plenty of storage in the 1344 SF 4 car garage. The living room offers a large rock fireplace for warm cozy nights of relaxing. The spacious kitchen is designed for large groups to entertain and for cooking. Along side the home is a 576 SF rustic 1 room log cabin that sleeps 6, with 1 bath. Cabin takes you back to the wild west with a few modern day amenities that the entire family can enjoy. You can comfortably accommodate 16± friends/family for large gatherings and explore the country side on your private, secluded ranch.

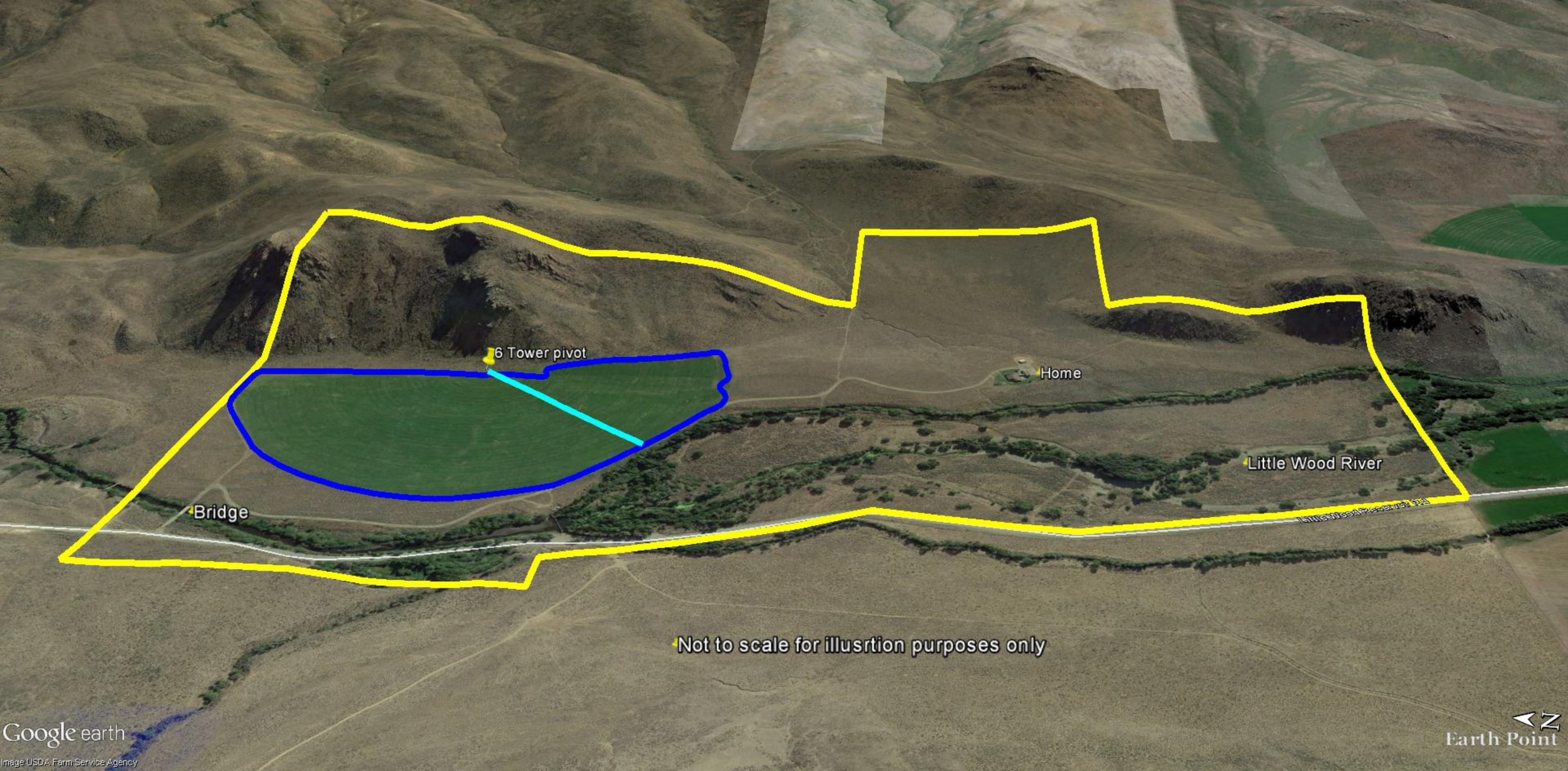
\$1,635,000



For Showing of the Property or to receive a brochure email or call:

Mark E. Jones,
Associate Broker, GRI
208-308-3030
mj@rjrealty.com

Note: The statement contained herein are based upon information from sources we deem reliable and which we believe to be correct, but assume no liability for errors or omissions therein.



6 Tower pivot

Home

Little Wood River

Bridge

Not to scale for illusrtion purposes only