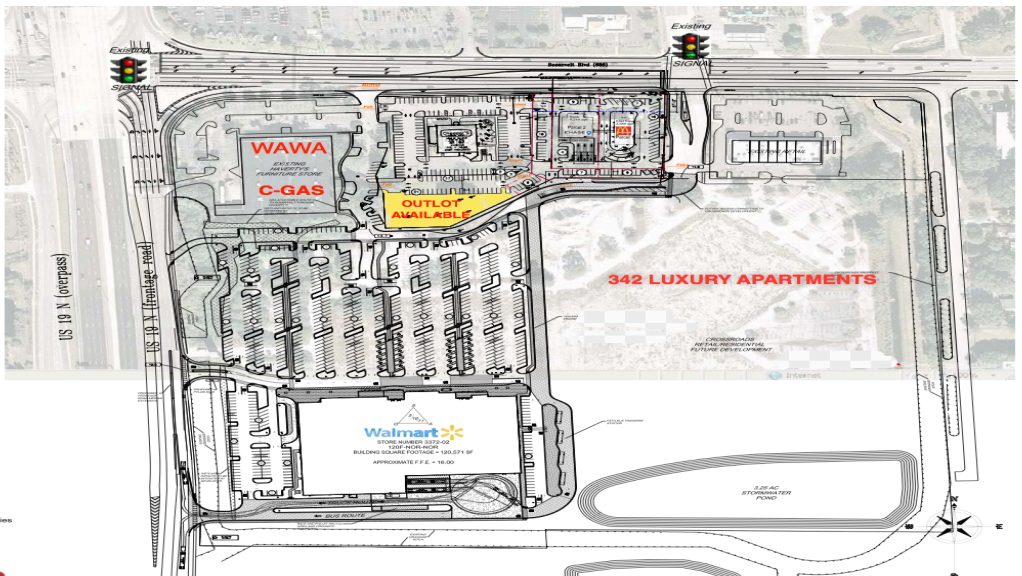


# JOIN NEW LARGO COMMONS

SEC Corner of US HWY 19 & Roosevelt Blvd. Largo, FL



**Street Front Commercial Properties**  
Metro Bay Associates, Inc., Broker

[www.streetfrontcommercialproperties.com](http://www.streetfrontcommercialproperties.com)

**Steve Stone**, Principal  
Steve@StoneCommercialProperties.com

727-804-5043 cell  
727-446-7205 fax

**Cary Anderson**, Principal  
Cary.Anderson@gmail.com

727-418-9427 cell

# JOIN NEW LARGO COMMONS

SEC Corner of US HWY 19 & Roosevelt Blvd. Largo, FL

## Largo Commons

- Outparcel Retail Center at signalized entry to the new Largo Commons
- Join Wal-Mart, Chase Bank, McDonalds, Cheddars, Casual Dining, Haverty's Furniture, Moe's Southwest Grill, etc...
- **FOR LEASE** Retail Store: 1260 SF
- **Traffic Counts:**

Over 100,000 at the intersection of US Hwy 19 & Roosevelt/SR 586

Roosevelt Blvd. East of Dodge St. - 48,000

Roosevelt Blvd. West of Dodge St.- 48,000

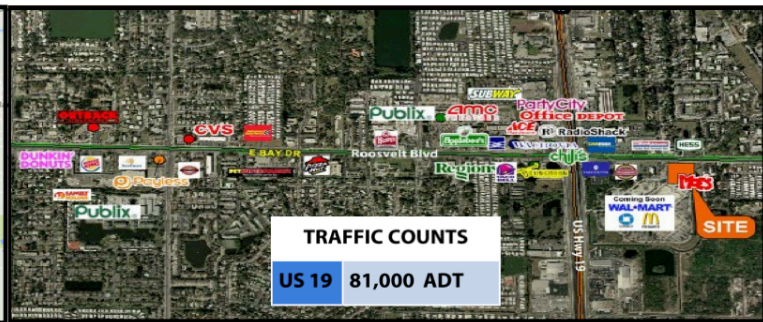
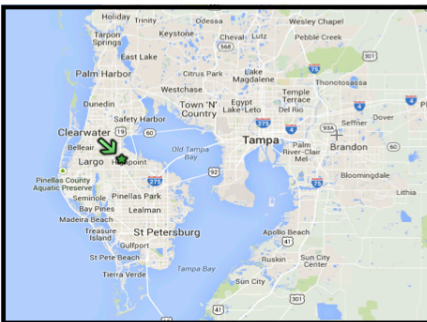
US Hwy 19 North of Roosevelt - 53,000

US Hwy 19 South of Roosevelt - 49,000



### DEMOGRAPHICS

	1 Mile	2 Mile	3 Mile
<b>Projected 2014 Population</b>	10,193	44,028	72,613
<b>Projected 2014 Households</b>	4,460	18,943	31,831
<b>Est. 2009 Avg. HH Income</b>	\$55,430	\$56,912	\$58,356
<b>Est. 2009 Median HH Income</b>	\$42,133	\$43,829	\$45,714



**Street Front Commercial Properties**  
Metro Bay Associates, Inc., Broker

[www.streetfrontcommercialproperties.com](http://www.streetfrontcommercialproperties.com)

**Steve Stone**, Principal  
Steve@StoneCommercialProperties.com

727-804-5043 cell  
727-446-7205 fax

**Cary Anderson**, Principal  
Cary.Anderson@gmail.com

727-418-9427 cell