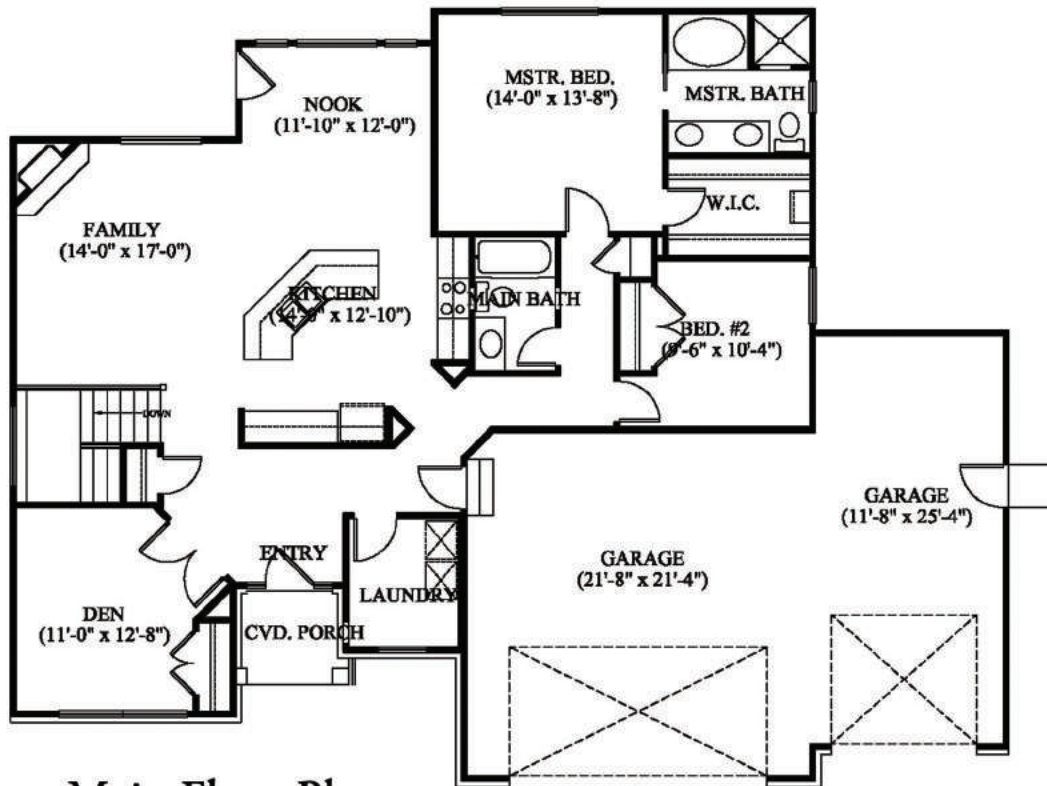
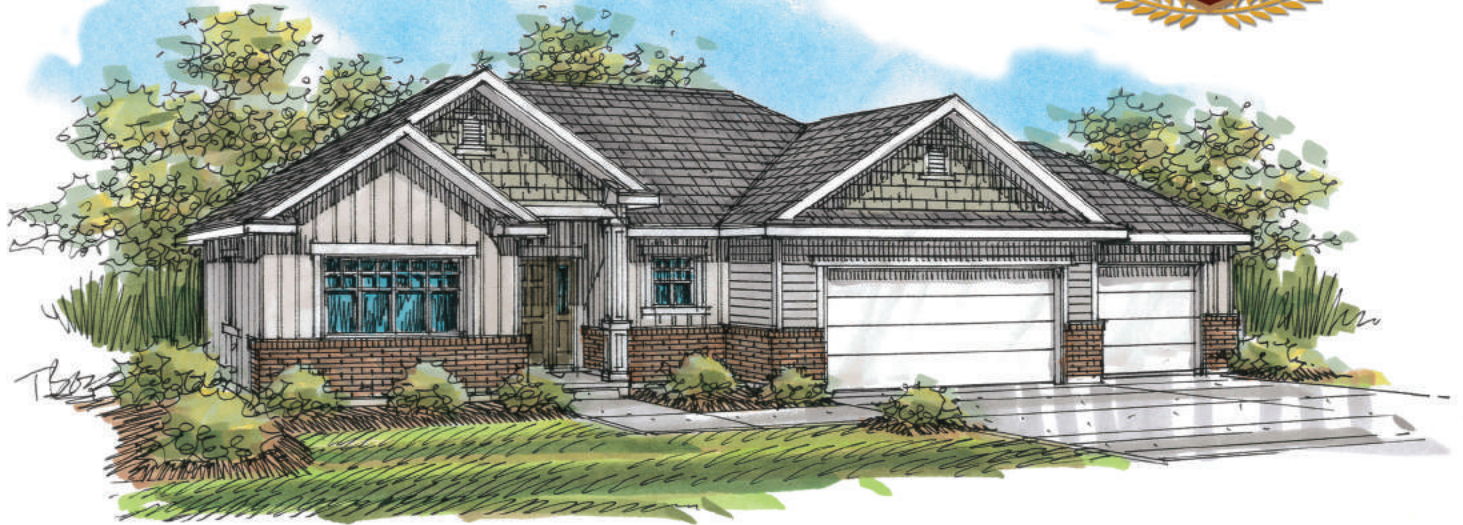




# The Lily 1598



Finished Sq. Ft. 1,598  
 Total Sq. Ft. 3,238  
 Bedrooms 3  
 Bathrooms 2

Cory Wallberg 801-631-8569  
 Julie Ingman 801-230-3282  
 John Hunter, Associate Broker

Wheaton Glenn is professionally represented exclusively by Century 21 / Everest Realty Group

Main Floor Plan\*



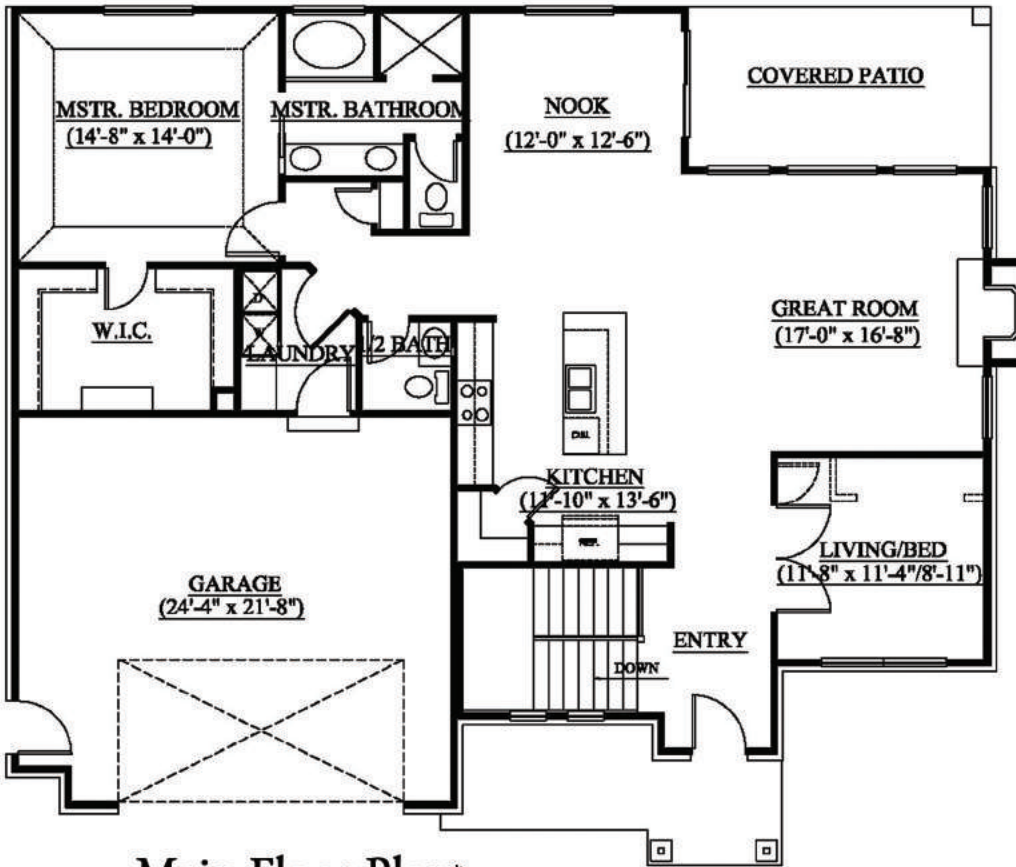
Wheaton Glenn Cove  
 1300 West 10165 South  
 South Jordan, UT 84095



\*Floorplans and Elevations are conceptual drawings and may vary from actual plans and homes built. Options and features may not be available on all homes and are subject to change without notice. Actual homes may vary from drawings which show upgraded landscaping and may not represent lowest-priced homes in the community. Features may include optional upgrades and may not be available on all homes. Square footage numbers are approximate and subject to change without notice. Prices, specifications, and availability are also subject to change without notice.



# The Iris 1605



Main Floor Plan\*

Finished Sq. Ft. 1,605  
 Total Sq. Ft. 3,330  
 Bedrooms 2  
 Bathrooms 1.5

Cory Wallberg 801-631-8569  
 Julie Ingman 801-230-3282  
 John Hunter, Associate Broker

Wheadon Glenn is professionally represented exclusively by Century 21 / Everest Realty Group



Wheadon Glenn Cove  
 1300 West 10165 South  
 South Jordan, UT 84095



\*Floorplans and Elevations are conceptual drawings and may vary from actual plans and homes built. Options and features may not be available on all homes and are subject to change without notice. Actual homes may vary from drawings which show upgraded landscaping and may not represent lowest-priced homes in the community. Features may include optional upgrades and may not be available on all homes. Square footage numbers are approximate and subject to change without notice. Prices, specifications, and availability are also subject to change without notice.



# The Daisy 1685



**Main Floor Plan\***

**Finished Sq. Ft. 1,685**  
**Total Sq. Ft. 3,495**  
**Bedrooms 1**  
**Bathrooms 1.5**

**Cory Wallberg 801-631-8569**  
**Julie Ingman 801-230-3282**  
**John Hunter, Associate Broker**

Wheadon Glenn is professionally  
 represented exclusively by  
 Century 21 / Everest Realty Group



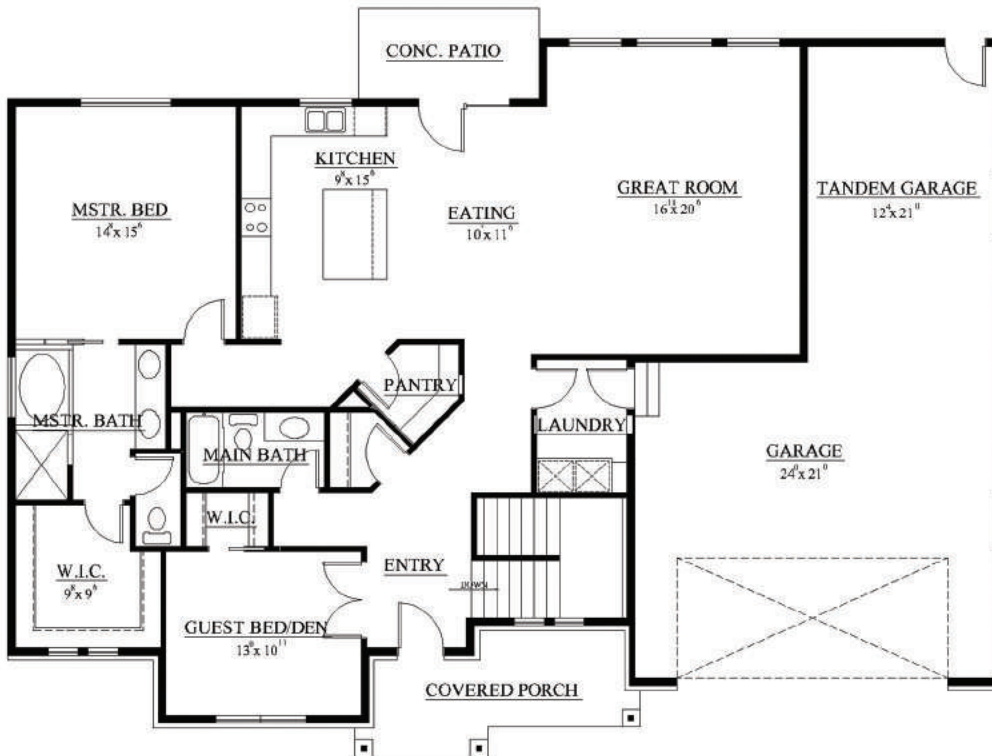
Wheadon Glenn Cove  
 1300 West 10165 South  
 South Jordan, UT 84095



\*Floorplans and Elevations are conceptual drawings and may vary from actual plans and homes built. Options and features may not be available on all homes and are subject to change without notice. Actual homes may vary from drawings which show upgraded landscaping and may not represent lowest-priced homes in the community. Features may include optional upgrades and may not be available on all homes. Square footage numbers are approximate and subject to change without notice. Prices, specifications, and availability are also subject to change without notice.



# The Marigold 1855



**Finished Sq. Ft. 1,855**  
**Total Sq. Ft. 3,831**  
**Bedrooms 2**  
**Bathrooms 2**

**Cory Wallberg 801-631-8569**  
**Julie Ingman 801-230-3282**  
**John Hunter, Associate Broker**

Wheaton Glenn is professionally  
 represented exclusively by  
 Century 21 / Everest Realty Group

## Main Floor Plan\*



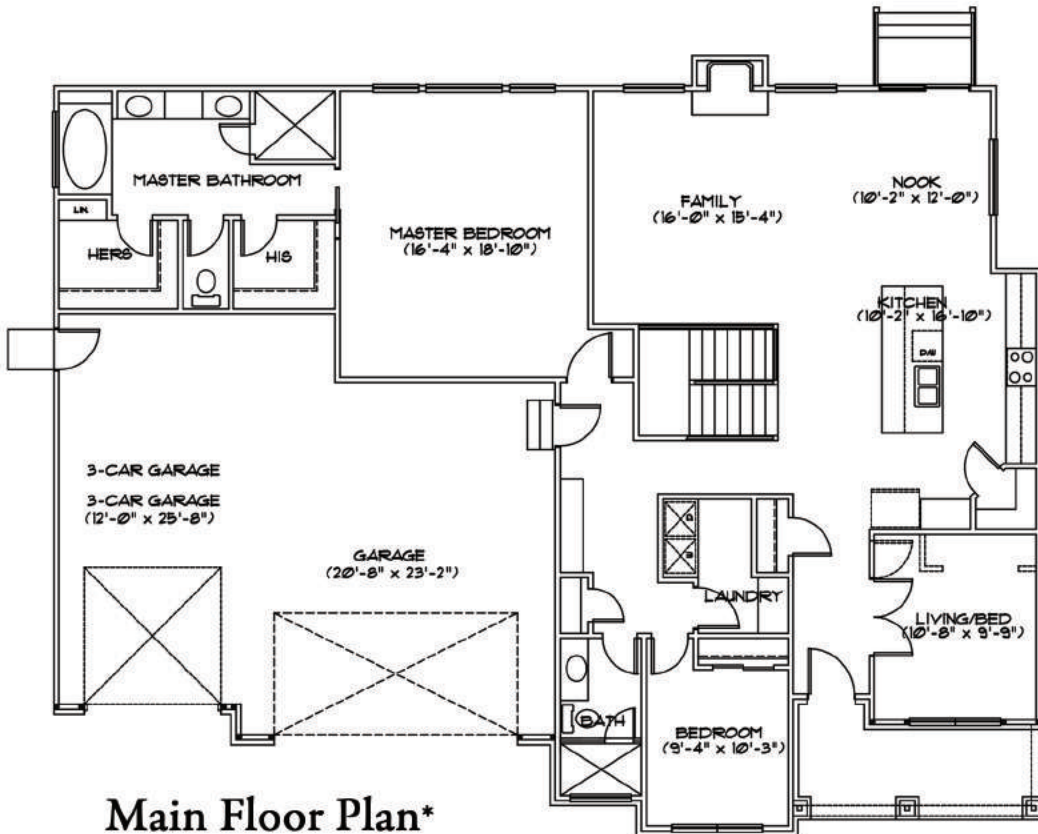
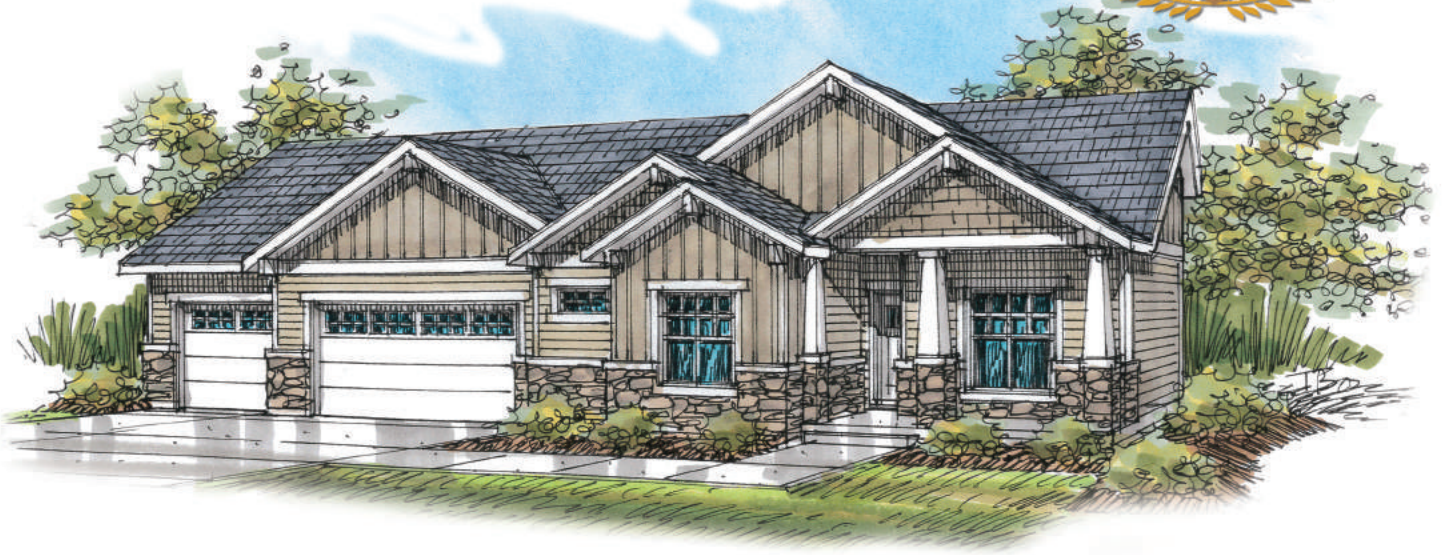
Wheaton Glenn Cove  
 1300 West 10165 South  
 South Jordan, UT 84095



\*Floorplans and Elevations are conceptual drawings and may vary from actual plans and homes built. Options and features may not be available on all homes and are subject to change without notice. Actual homes may vary from drawings which show upgraded landscaping and may not represent lowest-priced homes in the community. Features may include optional upgrades and may not be available on all homes. Square footage numbers are approximate and subject to change without notice. Prices, specifications, and availability are also subject to change without notice.



# The Orchid 1921



Finished Sq. Ft. 1,921  
 Total Sq. Ft. 3,962  
 Bedrooms 3  
 Bathrooms 2

Cory Wallberg 801-631-8569  
 Julie Ingman 801-230-3282  
 John Hunter, Associate Broker

Wheadon Glenn is professionally represented exclusively by Century 21 / Everest Realty Group



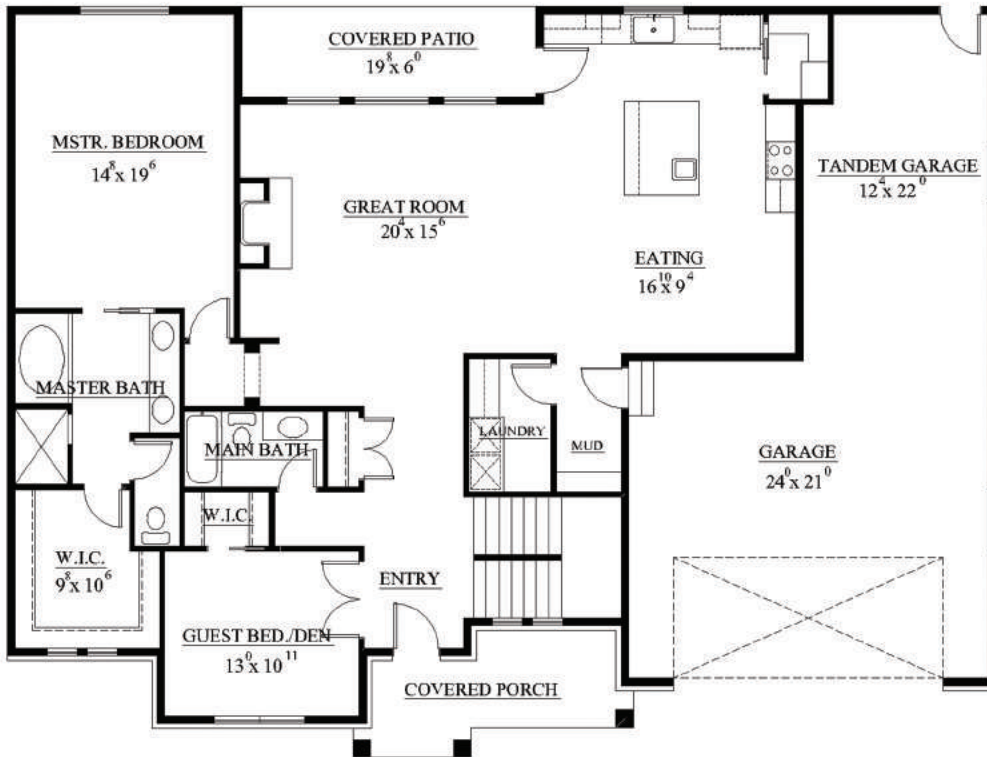
Wheadon Glenn Cove  
 1300 West 10165 South  
 South Jordan, UT 84095



\*Floorplans and Elevations are conceptual drawings and may vary from actual plans and homes built. Options and features may not be available on all homes and are subject to change without notice. Actual homes may vary from drawings which show upgraded landscaping and may not represent lowest-priced homes in the community. Features may include optional upgrades and may not be available on all homes. Square footage numbers are approximate and subject to change without notice. Prices, specifications, and availability are also subject to change without notice.



# The Primrose 1995



Finished Sq. Ft. 1,995  
 Total Sq. Ft. 4,111  
 Bedrooms 2  
 Bathrooms 2

**Cory Wallberg 801-631-8569**  
**Julie Ingman 801-230-3282**  
**John Hunter, Associate Broker**

Wheadon Glenn is professionally represented exclusively by Century 21 / Everest Realty Group

### Main Floor Plan\*



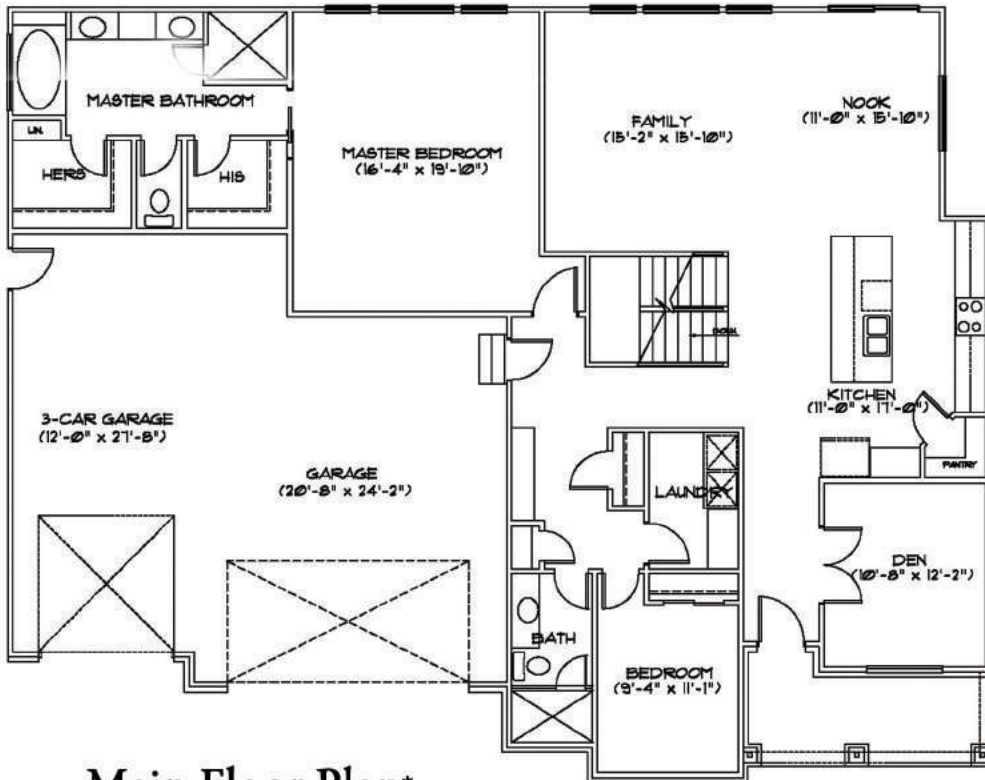
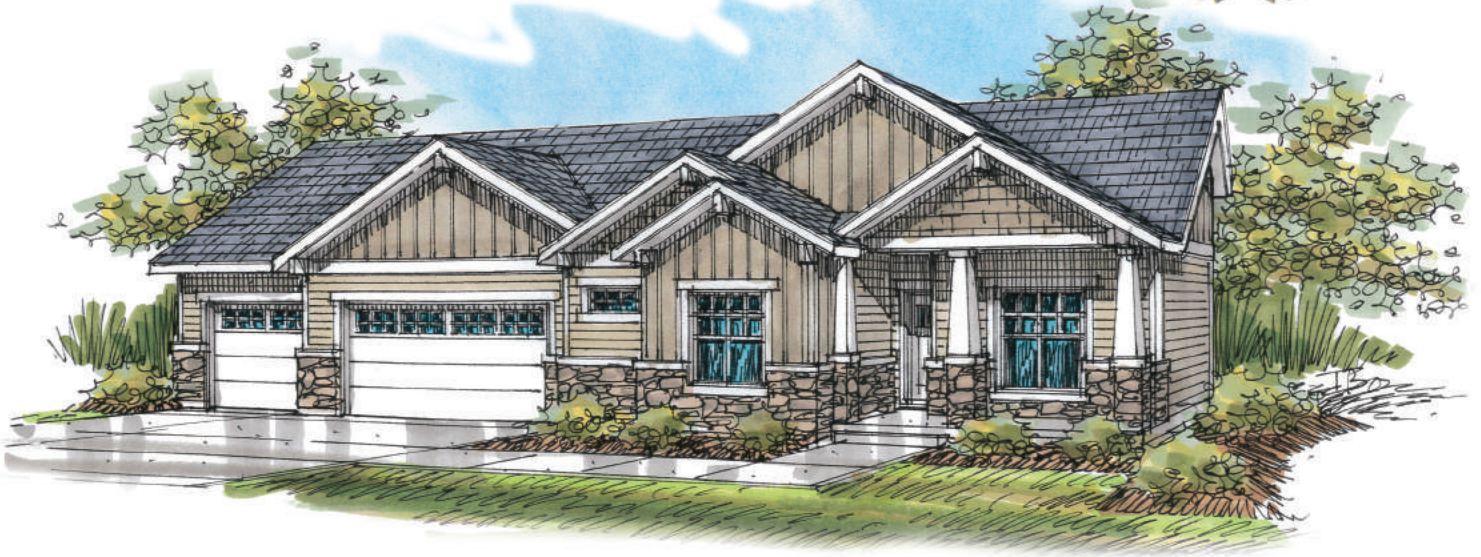
Wheadon Glenn Cove  
 1300 West 10165 South  
 South Jordan, UT 84095



\*Floorplans and Elevations are conceptual drawings and may vary from actual plans and homes built. Options and features may not be available on all homes and are subject to change without notice. Actual homes may vary from drawings which show upgraded landscaping and may not represent lowest-priced homes in the community. Features may include optional upgrades and may not be available on all homes. Square footage numbers are approximate and subject to change without notice. Prices, specifications, and availability are also subject to change without notice.



# The Jasmine 2031



Main Floor Plan\*

Finished Sq. Ft. 2,031  
 Total Sq. Ft. 4,182  
 Bedrooms 2  
 Bathrooms 2

Cory Wallberg 801-631-8569  
 Julie Ingman 801-230-3282  
 John Hunter, Associate Broker

Wheadon Glenn is professionally represented exclusively by Century 21 / Everest Realty Group



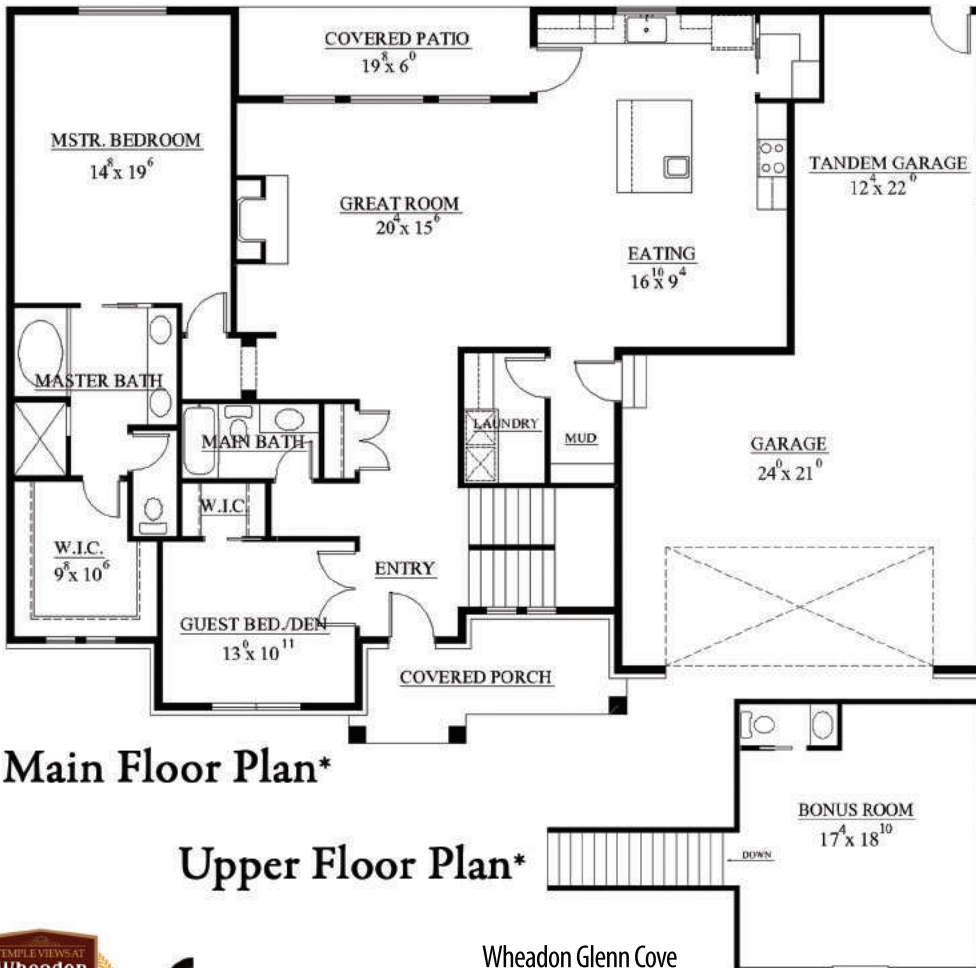
Wheadon Glenn Cove  
 1300 West 10165 South  
 South Jordan, UT 84095



\*Floorplans and Elevations are conceptual drawings and may vary from actual plans and homes built. Options and features may not be available on all homes and are subject to change without notice. Actual homes may vary from drawings which show upgraded landscaping and may not represent lowest-priced homes in the community. Features may include optional upgrades and may not be available on all homes. Square footage numbers are approximate and subject to change without notice. Prices, specifications, and availability are also subject to change without notice.



# The Sunflower 2307



**Main Floor Plan\***

**Upper Floor Plan\***

**Finished Sq. Ft. 2,307**  
**Total Sq. Ft. 4,421**  
**Bedrooms 2**  
**Bathrooms 2.5**

**Cory Wallberg 801-631-8569**  
**Julie Ingman 801-230-3282**  
**John Hunter, Associate Broker**

Wheadon Glenn is professionally  
 represented exclusively by  
 Century 21 / Everest Realty Group



Wheadon Glenn Cove  
 1300 West 10165 South  
 South Jordan, UT 84095



\*Floorplans and Elevations are conceptual drawings and may vary from actual plans and homes built. Options and features may not be available on all homes and are subject to change without notice. Actual homes may vary from drawings which show upgraded landscaping and may not represent lowest-priced homes in the community. Features may include optional upgrades and may not be available on all homes. Square footage numbers are approximate and subject to change without notice. Prices, specifications, and availability are also subject to change without notice.