

I CAN-CER VIVE

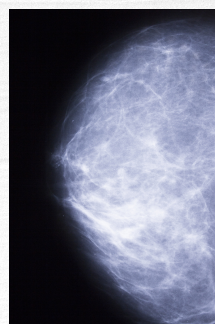
**ICHRAK HAMDİ
INES BOUHELAL**



**SUPERVISED BY :
DR. MOHAMED AMINE MEZGHICH**

Description

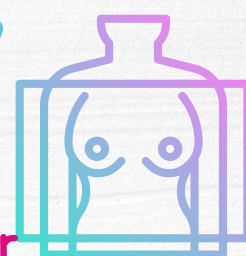
A Web application that allows to make a comparative study of machine learning algorithms for the segmentation of medical images in order to perform breast cancer screening.



*Time to see
your
mammogram
segmentation!*

FEATURES

- Free.
- Learning more about breast cancer.
- Familiarizing the use of CAD's system in Tunisia (computer-aided diagnosis) which are systems that assist doctors in the interpretation of medical images.



Perspectives

- Classification of breast cancer types.
- Integration of a part allowing the user to communicate with a doctor thus making him aware of the dangers of breast cancer.
- Integration of a part where the cancer patient can speak with psychological therapies.



*Awareness Is
Power*