

Barracuda CloudGen Firewall F-Series

Protect cloud-connected users, network workloads, and devices wherever they reside.

As you integrate public-cloud platforms and environments into your network, your firewalls must go beyond perimeter security and serve as the linchpins of your IT communications flow, ensuring reliable, cost-effective connections. Barracuda CloudGen Firewall was designed to optimise the performance, security, and availability of today's dispersed enterprise SD-WANs.

Barracuda CloudGen Firewall combines a complete security stack, powerful SD-WAN capabilities, and simple centralised management for hundreds or thousands of firewalls. Zero-touch hardware deployment and native cloud integration get you up and running quickly and easily in any environment.



Full next-generation security

Barracuda CloudGen Firewall is built to provide comprehensive, next-generation firewall protection. Firewalling, IPS, URL filtering, dual antivirus, and application control take place in the data path. Sandboxing and other resource-intensive tasks are offloaded seamlessly to the cloud. All platforms and models include the same comprehensive security feature-set.

Secure SD-WAN connectivity

In the cloud era, you need to connect branch offices with the cloud directly and securely. Connecting through a single, central gateway is costly and renders cloud based applications unresponsive. Optimised direct internet uplink selection ensures fast cloud-hosted SaaS applications. CloudGen Firewall lets you replace costly MPLS connections with up to 24 bonded broadband connections per VPN tunnel for increased application performance and built-in redundancy.

Cloud automation

The big advantage of going to the cloud is greater agility and flexibility. This requires high degrees of automation. All components, including the infrastructure for security and connectivity, need to adapt to the way this works. CloudGen Firewall provides fully automated protection across multi-cloud deployments, including VPN automation across multiple cloud providers, on-site and virtual.

Technical specs

Firewall

- Stateful packet inspection and forwarding
- Full user-identity awareness
- IDS/IPS
- Application control and granular application enforcement
- Interception and decryption of SSL/TLS encrypted applications
- Antivirus and web filtering in single pass mode
- Email security
- SafeSearch enforcement
- Google Accounts Enforcement
- Denial of Service protection (DoS/DDoS)
- Spoofing and flooding protection
- ARP spoofing and trashing protection
- DNS reputation filtering
- NAT (SNAT, DNAT), PAT
- Dynamic rules / timer triggers
- Single object-oriented rule set for routing, bridging, and routed bridging
- Virtual rule test environment

Protocol support

- IPv4, IPv6
- BGP/OSPF/RIP
- VoIP (H.323, SIP, SCCP [skinny])
- RPC protocols (ONC-RPC, DCE-RPC)
- 802.1q VLAN
- Industrial protocols and subprotocols (S7, S7+, IEC 60870-5-104, IEC 61850, MODBUS, DNP3)

Intrusion detection and prevention

- Protection against exploits, threats and vulnerabilities
- Packet anomaly and fragmentation protection
- Advanced anti-evasion and obfuscation techniques
- Automatic signature updates

Infrastructure services

- DHCP server, relay
- SIP and HTTP proxies
- SNMP and IPFIX support
- JSON lifecycle automation API
- Auto VPN via API and script control
- Authoritative DNS server
- DNS server
- DNS cache
- Wi-Fi (802.11n) on selected models
- Built-in support for Azure Virtual WAN

VPN & Zero Trust Access

- Drag & drop VPN tunnel configuration
- Network access control
- iOS and android mobile device VPN support
- Two-factor authentication via time-based one-time passwords (TOTP), Radius, or RSA MFA (requires an active Advanced Remote Access subscription) for VPN and NAC clients
- Multi-factor authentication for SSL VPN and CudaLaunch
- Barracuda CloudGen Access for Zero Trust Access to applications

Advanced threat protection

- Dynamic, on-demand analysis of malware programs (sandboxing)
- Dynamic analysis of documents with embedded exploits (PDF, Office, etc.)
- Detailed forensic analysis
- Botnet and spyware protection
- TypoSquatting and link protection for email

Central management options via Barracuda Firewall Control Center

- Administration for unlimited firewalls
- Support for multi-tenancy
- Multi-administrator support & RCS
- Zero-touch deployment
- Enterprise/MSP licensing
- Template & repository-based management
- REST API

High availability

- Active-passive
- Transparent failover without session loss
- Encrypted HA communication

Traffic intelligence & SD-WAN

- Optimised direct internet uplink selection
- VPN-based SD-WAN
- Simultaneous use of multiple uplinks (transports) per VPN tunnel
- FIPS 140-2 certified cryptography
- On-demand direct VPN tunnel creation between remote spoke locations based on application type
- Dynamic bandwidth detection
- Performance-based transport selection
- Application-aware traffic routing
- Adaptive session balancing across multiple uplinks
- Traffic replication (forward error correction)
- Application-based provider selection
- Application-aware traffic routing (VPN)
- Traffic shaping and QoS
- Built-in data deduplication

Support options

Barracuda Energize Updates

- Standard technical support
- Firmware updates
- IPS signature updates
- Application control definition updates
- Web filter updates
- Barracuda CloudGen Access support

Instant Replacement Service

- Replacement unit shipped next business day
- 24/7 technical support
- Free hardware refresh every four years

Available subscriptions

Barracuda Firewall Insights

Consolidates security, application flow, and connectivity information from hundreds or even thousands of firewalls on the extended wide area network – regardless of whether they are hardware, virtual, or cross-cloud-based deployments.

Malware Protection

Provides gateway-based protection against malware, viruses, spyware, and other unwanted programs inside SMTP/S, HTTP/S, and FTP/S traffic.

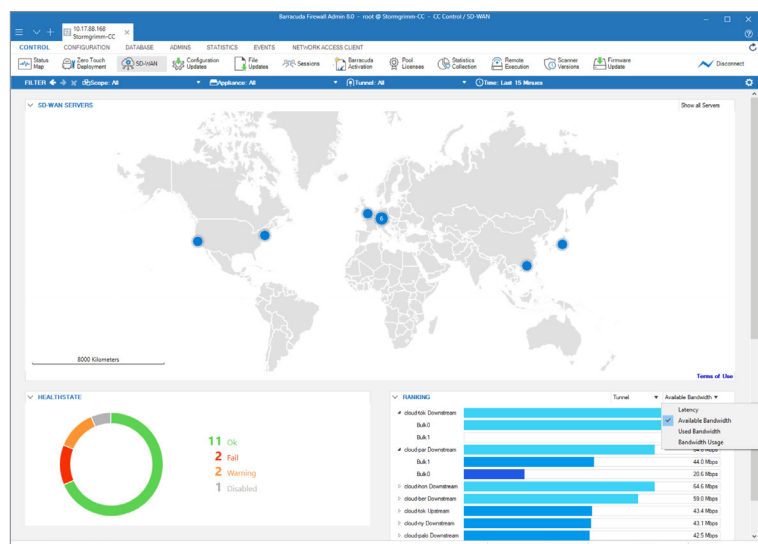
Advanced Threat Protection

Prevents from network breaches, identifies zero-day malware exploits, targeted attacks, advanced persistent threats and other advanced malware.

Advanced Remote Access

Provides a customisable and easy-to-use portal-based SSL VPN as well as sophisticated network access control (NAC) functionality and CudaLaunch support.

Barracuda CloudGen Firewall's SD-WAN dashboard provides real-time information and summaries of what is going on in an organisation's network.



Basic features

	ENTRY AND BRANCH OFFICE / RUGGED	MID-RANGE	HIGH-END
Firewall incl. IPS	✓	✓	✓
Application control	✓	✓	✓
Dynamic routing	✓	✓	✓
Application-based provider selection	✓	✓	✓
SSL interception	✓	✓	✓
SD-WAN	✓	✓	✓
Cloud connectivity automation with Azure Virtual WAN	✓	✓	✓
Web filter	✓	✓	✓
Zero-touch deployment	✓	✓	✓
Client-to-site and site-to-site VPN	Unlimited	Unlimited	Unlimited

Optional features

	ENTRY AND BRANCH OFFICE / RUGGED	MID-RANGE	HIGH-END
Firewall Insights	Optional	Optional	Optional
Advanced threat protection	Optional	Optional	Optional
Malware Protection	Optional ¹	Optional	Optional
Advanced remote access	Optional ²	Optional	Optional

Entry & branch office / rugged models

	ENTRY AND BRANCH OFFICE							RUGGED	
	F12A	F18B	F80B	F82A.DSLA	F82A.DSLB ⁸	F180A	F280C	F93A.R	F183RA
PERFORMANCE									
Firewall throughput ³	1.2 Gbps	2.0 Gbps	2.0 Gbps	1.5 Gbps	1.5 Gbps	1.7 Gbps	6.0 Gbps	1.5 Gbps	2.1 Gbps
VPN throughput ⁴	220 Mbps	720 Mbps	720 Mbps	240 Mbps	240 Mbps	300 Mbps	1.8 Gbps	240 Mbps	320 Mbps
IPS throughput ⁵	400 Mbps	600 Mbps	600 Mbps	400 Mbps	400 Mbps	500 Mbps	2.0 Gbps	400 Mbps	790 Mbps
NGFW throughput ⁶	250 Mbps	400 Mbps	400 Mbps	240 Mbps	400 Mbps	550 Mbps	1.6 Gbps	400 Mbps	800 Mbps
Threat protection throughput ⁷	230 Mbps	380 Mbps	380 Mbps	380 Mbps	380 Mbps	480 Mbps	1.5 Mbps	380 Mbps	700 Mbps
Concurrent sessions	80,000	80,000	80,000	80,000	80,000	100,000	300,000	80,000	100,000
New session/s	8,000	12,000	12,000	8,000	8,000	9,000	12,000	8,000	9,000
HARDWARE									
Form factor	Compact	Desktop	Desktop	Desktop	Desktop	Desktop	Desktop	Compact, DIN rail	Compact, DIN rail
Copper ethernet NICs [GbE]	5x	5x	5x	4x	4x	6x	12x	2x	5x
Fiber ethernet NICs (SFP) [GbE]	-	-	-	1x	1x	-	4x	1x	2x
Integrated switch	-	-	-	-	-	8-port	-	-	-
Integrated modem (DSL)	-	-	-	Annex A, RJ11	Annex B, RJ45	-	-	-	-
Wi-Fi access point	-	-	✓	✓	✓	✓	✓	-	-
Power supply	Single, external	Single, external	Single, external	Single, external	Single, external	Single, external	Single, external	Phoenix 4-pin or dual, external	Phoenix 6-pin or dual, external

Mid-range models

	F380B	F400C SUBMODELS		F600D SUBMODELS				
		STD	F20	C10	C20	F10	F20	E20
PERFORMANCE								
Firewall throughput ³	8.5 Gbps	13 Gbps	13 Gbps	15 Gbps		15 Gbps		20 Gbps
VPN throughput ⁴	2.1 Gbps	3.6 Gbps	3.6 Gbps	3.8 Gbps		3.8 Gbps		6.8 Gbps
IPS throughput ⁵	2.5 Gbps	4.2 Gbps	4.2 Gbps	4.8 Gbps		4.8 Gbps		8.0 Gbps
NGFW throughput ⁶	2.0 Gbps	3.7 Gbps	3.7 Gbps	4.2 Gbps		4.2 Gbps		6.4 Gbps
Threat protection throughput ⁷	1.7 Gbps	3.1 Gbps	3.1 Gbps	4.0 Gbps		4.0 Gbps		5.8 Gbps
Concurrent sessions	400,000	500,000	500,000	2,100,000		2,100,000		2,100,000
New session/s	15,000	20,000	20,000	115,000		115,000		115,000
HARDWARE								
Form factor	1U rack mount	1U rack mount		1U rack mount				
Copper ethernet NICs [GbE]	8x	8x	8x	18x	18x	10x	10x	10x
Fiber ethernet NICs (SFP) [GbE]	-	-	4x	-	-	8x	8x	8x
Fiber ethernet NICs (SFP+) [GbE]	2x	2x	2x	-	-	-	-	2x
Power supply	Single, internal	Single, internal	Dual, hot swap	Single, internal	Dual, hot swap	Single, internal	Dual, hot swap	Dual, hot swap

High-end models

	F800C SUBMODELS			F900B SUBMODELS				F1000A SUBMODELS			
	CCC	CCF	CCE	CCC	CCE	CFE	CFEQ	CE0	CE2	CFE	CFEQ
PERFORMANCE											
Firewall throughput ³	30 Gbps			35 Gbps			45 Gbps	46 Gbps		46 Gbps	
VPN throughput ⁴	7.5 Gbps			9.3 Gbps			13.5 Gbps	10 Gbps		10.3 Gbps	
IPS throughput ⁵	8.3 Gbps			11.3 Gbps			13 Gbps	13 Gbps		14 Gbps	
NGFW throughput ⁶	7.7 Gbps			8.0 Gbps			12 Gbps	10.2 Gbps		13 Gbps	
Threat protection throughput ⁷	7.6 Gbps			8.0 Gbps			11.5 Gbps	4.0 Gbps		12 Gbps	
Concurrent sessions	2,500,000			4,000,000			4,000,000	10,000,000		10,000,000	
New session/s	180,000			190,000			190,000	250,000		250,000	
HARDWARE											
Form factor	1U rack mount			1U rack mount				2U rack mount			
Copper ethernet NICs [GbE]	24x	16x	16x	32x	16x	8x	8x	16x	32x	16x	16x
Fiber ethernet NICs (SFP) [GbE]	-	8x	-	-	-	8x	8x	-	-	16x	16x
Fiber ethernet NICs (SFP+) [GbE]	-	-	4x	-	8x	8x	4x	4x	8x	8x	6x
Fiber ethernet NICs (QSFP+) [GbE]	-	-	-	-	-	-	2x	-	-	-	2x
Power supply	Dual hot swap			Dual hot swap				Dual hot swap			

All performance values are measured under optimised conditions and are to be considered as "up to" values and may vary depending on system configuration and infrastructure:

¹ For model F12A, malware protection utilises cloud-based malware protection as part of an active advanced threat protection subscription.

² For model F12A, this feature is not available.

³ Firewall throughput measured with large packets (MTU1500) UDP packets, bi-directional across multiple ports, utilising highest available port density.

⁴ VPN performance is based on 1415 Byte UDP packets, bidirectional using BreakingPoint traffic generator.

⁵ IPS throughput is measured using large packets (MTU1500) UDP traffic and across multiple ports, utilising highest available port density.

⁶ NGFW throughput is measured with IPS, application control, and web filter enabled, based on BreakingPoint Realworld-IPS-

Enterprise-Traffic-Mix, bidirectional across multiple ports, utilising highest available port density.

⁷ Threat protection throughput is measured with IPS, application control, web filter, antivirus, and SSL inspection enabled,

based on BreakingPoint Realworld-IPS-Enterprise-Traffic-Mix, bidirectional across multiple ports.

⁸ Model F82A.DSLB is only available in EMEA.

Specifications subject to change without notice.

