



USE OF SINGLE EXTRA BACK UP GUIDING CATHETER FOR BOTH LEFT AND RIGHT CORONARY PCI

Himanshu Arora*¹, Raja Ram Mantri² and Sandeep Parekh¹

¹Consultant Cardiologist, Grecian Superspeciality Hospital, Mohali.

²Senior Consultant Cardiologist, Sir Gangaram Hospital, New Delhi.

***Corresponding Author: Dr. Himanshu Arora**

Consultant Cardiologist, Grecian Superspeciality Hospital, Mohali.

Article Received on 13/06/2018

Article Revised on 03/07/2018

Article Accepted on 23/07/2018

INTRODUCTION

We present a case report of PCI of Right coronary artery with Extra back up (EBU) guiding catheter. Right coronary interventions are preferably done by Judkins Right (JR) catheter^[1], and sometimes Hockey stick^[2], multipurpose (MP) and Amplatz left 1 (AL 1) catheter. Use of EBU for right coronary intervention has not been described previously.

CASE REPORT

51 year old patient was admitted as a case of Acute coronary syndrome. He underwent coronary angiography via right radial artery with Tiger 5 F catheter. Left

anterior descending artery showed 90% tubular stenosis while right coronary artery showed proximal 85% eccentric discrete stenosis (Figure 1 and Figure 2).



Figure 1: Lesion in proximal LAD.

Figure 2: Lesion in proximal RCA.

Percutaneous coronary intervention (PCI) was planned for both lesions. First left main was cannulated with EBU 3.5 by 6 F guiding catheter. Subsequent PCI was done and a drug eluting stent was deployed across the lesion.(Figure 3).



Figure 3: Balloon inflation across the lesion and final result after stent placement.

Right coronary cannulation was tried with EBU but it failed in the first attempt. Stiff end of the .035" wire was

used to manipulate the guiding catheter and it was successful (Figure 4).

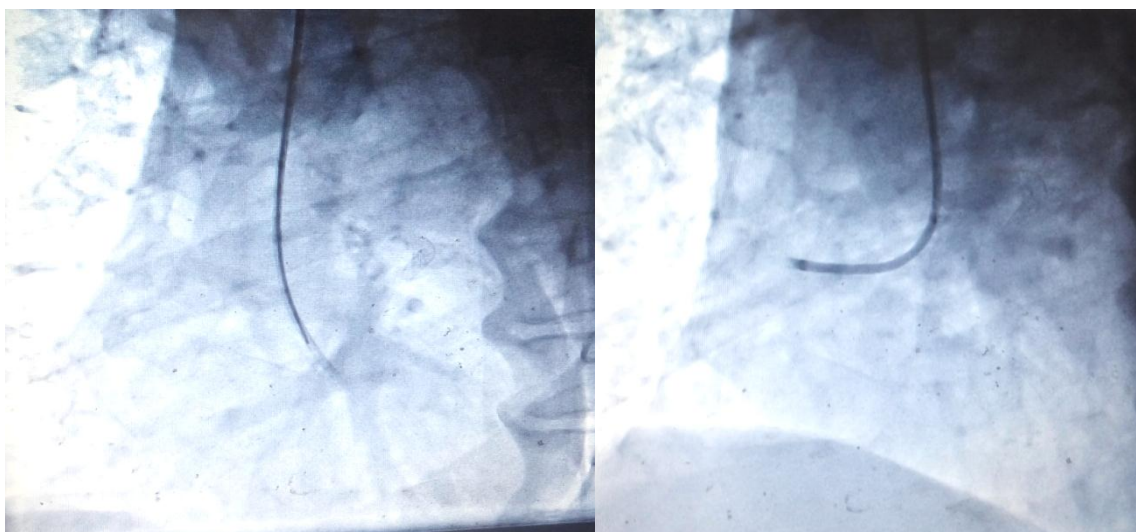


Figure 4: Use of stiff end of wire to straighten the tip and further manipulation to engage the right coronary ostia.

PCI with drug eluting stent was done with good end results. (Figure 5).

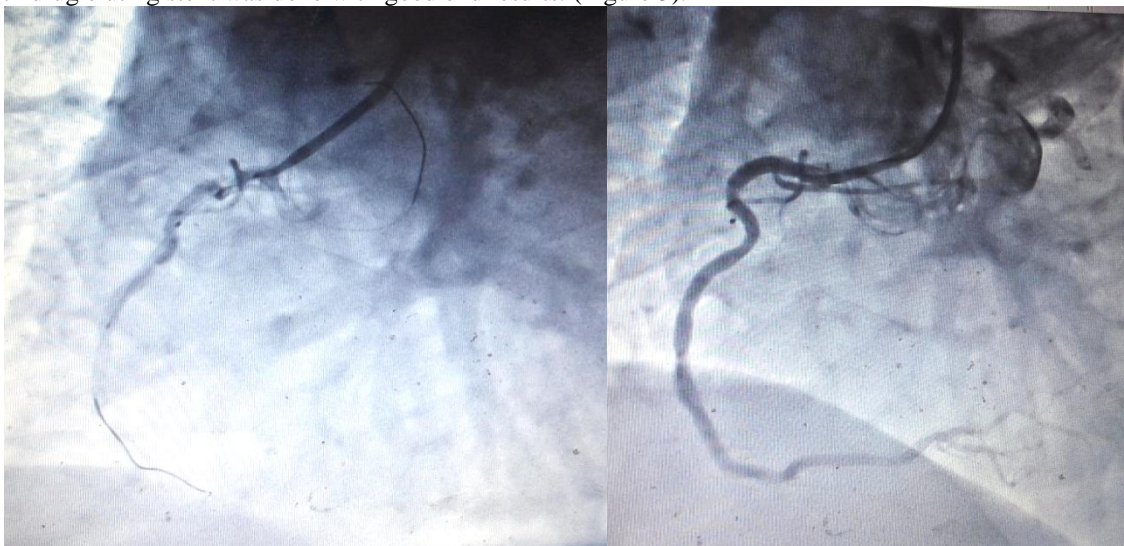


Figure 5: PCI of the RCA lesion with final result.

DISCUSSION

Right coronary interventions are conventionally performed by various guiding catheters like Judkins right, multipurpose, Amplatz left and Hockeystick. Use of Extra back up catheter provides active support against contralateral aortic wall during left coronary interventions. Use in right coronary interventions has not been described. EBU due to its preformed shape, does not enter the ostia of right coronary artery. A simple straightening of the catheter with the stiff end of the .035" 145 cm wire and subsequent manipulation results in easy entrance of the guide in the right coronary artery. To the best of our knowledge, no previous such case has been reported in literature. This simple maneuver can reduce the cost associated with PCI and reduce the chances of radial artery spasm associated with frequent catheter exchanges.

REFERENCES

1. Myler RK, Boucher RA, Cumberland DC, et al. Guiding catheter selection for right coronary artery angioplasty. *Cath. Cardiovasc. Diag.*, 1990; 19(1): 58-67.
2. Mehta S, Margolis JR. Hockey Stick Guiding Catheter. *J Interven Cardiol*, 1992; 5: 331336.