



**MOLECULAR DOCKING STUDIES ON PHYTOCONSTITUENTS OF SACCHARUM  
SPONTANEUM (LINN). AGAINST A-AMYLASE ENZYME**

**R. Ramprasad\*, J. Amutha Iswarya Devi, Nilsha Anil and S. R. Senthil Kumar**

Department of Pharmacy, Arulmigu Kalasalingam College of Pharmacy Anand Nagag Krishnan Koil -626126, Tamil Nadu, India.

**\*Corresponding Author: Dr. R. Ramprasad**

Department of Pharmacy, Arulmigu Kalasalingam College of Pharmacy Anand Nagag Krishnan Koil -626126, Tamil Nadu, India.

Article Received on 20/12/2017

Article Revised on 10/01/2018

Article Accepted on 30/01/2018

**ABSTRACT**

The purpose of the study is to evaluate the  $\alpha$ -amylase inhibitory activity of active constituents present in *Saccharum spontaneum* (Linn) using *in silico* docking studies. In this perspective, active plant constituent ligands were prepared for the docking evaluation. Acarbose, a known  $\alpha$ -amylase inhibitor was used as the standard. *In silico* docking studies were carried out using recent version of GLIDE software v5.5 developed by Schrödinger. These results showed that all the active constituents showed binding energy ranging between -1.07958 to -6.38973 kcal/mol when compared with that of the standard (-6.3kcal/mol). 1,2-Benzenedicarboxylic acid, diisooctyl ester.mol, Vitamin D3.mol, 2-Propyl-tetrahydropyran-3-ol, d-Mannose.mol, 2H-Pyran, 2-(7Ptadecyloxy) tetrahydro, 2,4-Octadienoic acid, 7-hydroxy-6-methyl, 2-Furancarboxaldehyde, 5-(hydroxymethyl) contributed excellent  $\alpha$ -amylase inhibitory activity because of its structural parameters. These molecular docking analyses lead to the further development to identify the potent  $\alpha$ -amylase inhibitors for the treatment of diabetes.

**KEYWORDS:** *Saccharum spontaneum* (Linn), Molecular Docking,  $\alpha$ -amylase, anti-diabetic.

**INTRODUCTION**

Diabetes mellitus described as a metabolic disease characterized by hyperglycemia resulting from fault in insulin secretion, insulin action or both. Most effective treatment for type II diabetes is the control of postprandial hyperglycemia after a meal.<sup>[1,2]</sup> Stabilization of blood glucose is necessary for diabetic patients, because it prevents hyperglycemia and the complexity associated with diabetes.<sup>[3,4,5]</sup> The properties of diabetes mellitus consist of long-term injury, dysfunction and failure of various organs.<sup>[6,7]</sup> At the current situation it is predicted that 150 million people, universally have diabetes and that this will increase to 300 million by 2050.<sup>[8,9]</sup> Modern medicines such as sulfonylureas, biguanides, and thiozolidinediones are intended for the treatment of diabetes. Though, they also have undesired effects related with their uses.<sup>[10,11]</sup> The natural products or medicinal plants reduce the absorption of glucose by reduce the carbohydrate hydrolyzing enzymes, such as pancreatic amylase.<sup>[12,13]</sup> The inhibition of this enzyme slow down the carbohydrate digestion and extend the overall carbohydrate digestion time, ensuing in the decrease in glucose absorption rate and as a result reduce the postprandial plasma glucose rise.<sup>[14,15,16]</sup> Several indigenous medicinal plants have a great potential in the  $\alpha$ -amylase inhibition.<sup>[17,18]</sup> Herbal medicines are playing a vital role in the treatment of various chronic diseases when compared to modern synthetic drugs. They are

very safe because of its minimum side effects. Proper knowledge of crude drug is very important aspect in the development of herbal formulation, safety and efficacy of the herbal product.<sup>[19,20,21]</sup> Pharmacognosy, a science which deals with an entire information of the crude drug obtained *Saccharum spontaneum* (Linn). Synonyms, Ahlek, loa, wild cane, wild sugarcane, Family: Poaceae. In India, it is considered as valuable aromatic plant in traditional systems of medicine. It is popular folk medication. The whole plant used to treat diseases such as vomiting, mental diseases, abdominal disorders, dyspnoea, anaemia and obesity. The rural public use the fresh juice of the stem of *Saccharum spontaneum* plant for the treatment of mental illness and mental disturbances. The stems are also useful for renal and vesicol calculi dyspepsia, haemorrhoids, menorrhagia dysentery, agalactia phthisis and general debility. The roots are sweet, astringent, emollient, refrigerant, diuretic, lithontriptic, purgative, tonic, aphrodisiac and useful in the treatment of dyspepsia, burning sensation, piles, sexual weakness, gynaecological troubles and respiratory troubles etc.<sup>[22,23,24]</sup> This study was therefore undertaken to evaluate the effect of active constituents of the *Saccharum spontaneum* (Linn) on  $\alpha$ -amylase enzyme.

## MATERIAL AND METHODS

### Molecular Modeling Studies

Molecular modeling studies have been carried out using GLIDE software v5.5 developed by Schrödinger running on Red Hat Enterprise Linux 5 workstation. Maestro v9.5 Graphical User Interface (GUI) workspace was used for all the steps involved in ligand preparation, protein preparation, HTVS (High Throughput Virtual Screening).

### Ligand Preparation

The ligands used in this study were prepared using LigPrep module of v2.3 of Schrödinger Suite 2013. LigPrep follows OPLS-AA (Optimized Potential Liquid Simulations for All Atoms) force fields for energy minimization.

### Protein Preparation

The X-ray crystal structure of  $\alpha$ -amylase (PDB: 1HNY) was retrieved from PDB database as raw could not be suitable for molecular docking studies. A typical PDB structure consists only of heavy atoms, waters, Cofactors, metal ions and can be of multimeric. These structures do not have the information about bond orders, topologies or formal atomic charges. So, the raw PDB structure should be prepared in a suitable manner for docking. Protein Preparation Wizard of GLIDE software was used to process and prepare the protein. This also follows the Optimized Potential for Liquid Simulations-All Atoms (OPLS-AA) force fields for energy minimization.

### Docking Protocol

All docking calculations were performed using the "Extra Precision" (XP) mode of GLIDE program. The binding site, for which the various energy grids were calculated and stored, is defined in terms of two concentric cubes: the bounding box, which must contain the center of any acceptable ligand pose and the enclosing box, which must contain all ligand atoms of an acceptable pose, with a Root Mean Square Deviation (RMSD) of less than 0.5 Å and a maximum atomic displacement of less than 1.3 Å were eliminated as redundant in order to increase diversity in the retained ligand poses. The scale factor for van der Waals radii was applied to those atoms with absolute partial charges less than or equal to 0.15 (scale factor of 0.8) and 0.25 (scale factor of 1.0) electrons for ligand and protein, respectively. The max keep variable which sets the maximum number of poses generated during the initial phase of the docking calculation were set to 5000 and the keep best variable which sets the number of poses per ligand that enters the energy minimization was set to 1000. Energy minimization protocol includes dielectric constant of 4.0 and 1000 steps of conjugate gradient. Upon completion of each docking calculation, at most 100 poses per ligand were generated. The best docked structure was chosen using a GLIDE score (Gscore) function. Another scoring function used by GLIDE is E-model, which itself derived from a combination of the

Gscore, Coulombic, van der Waals and the strain energy of the ligand.<sup>[25,26,27]</sup>

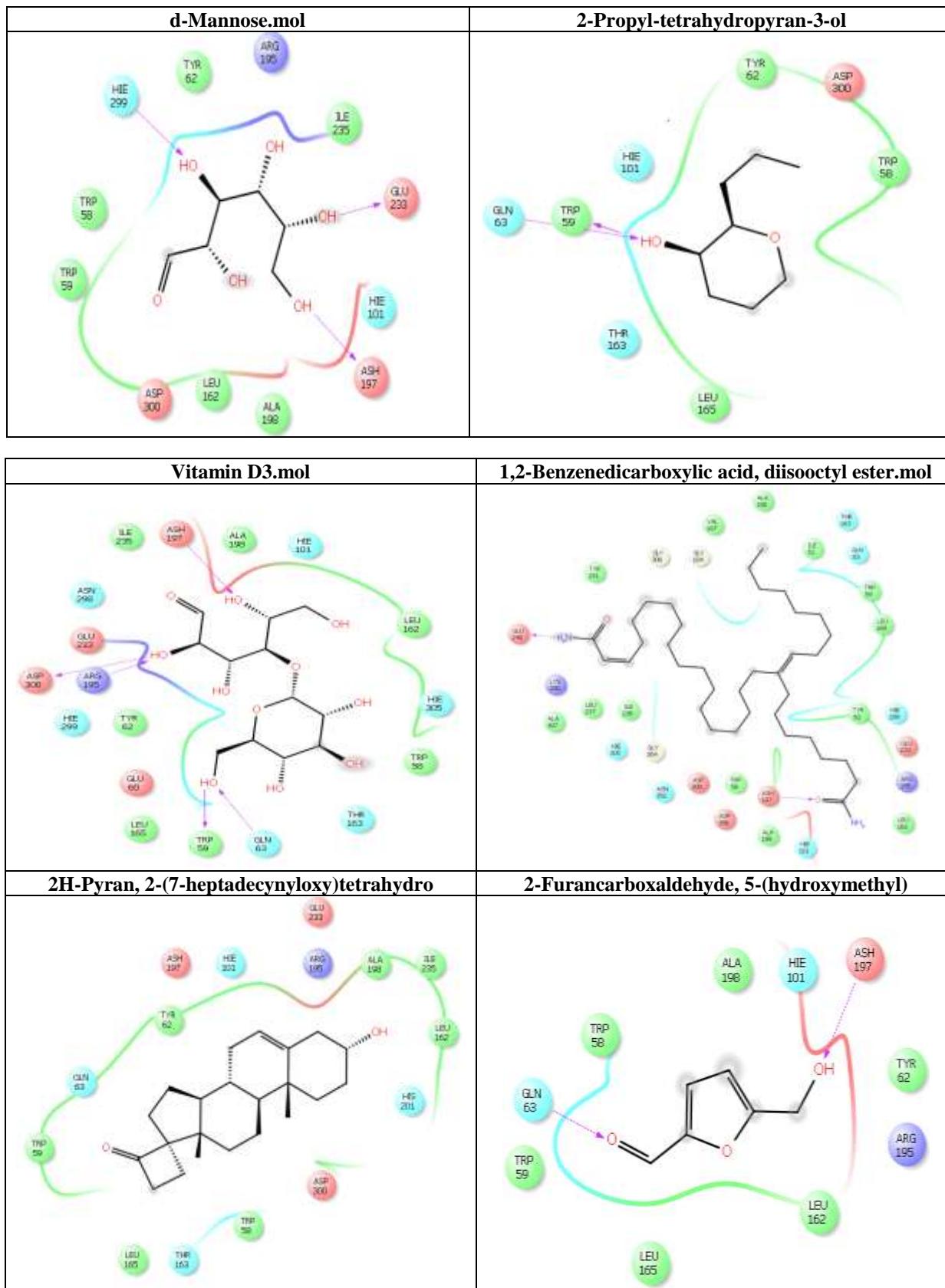
## RESULTS AND DISCUSSION

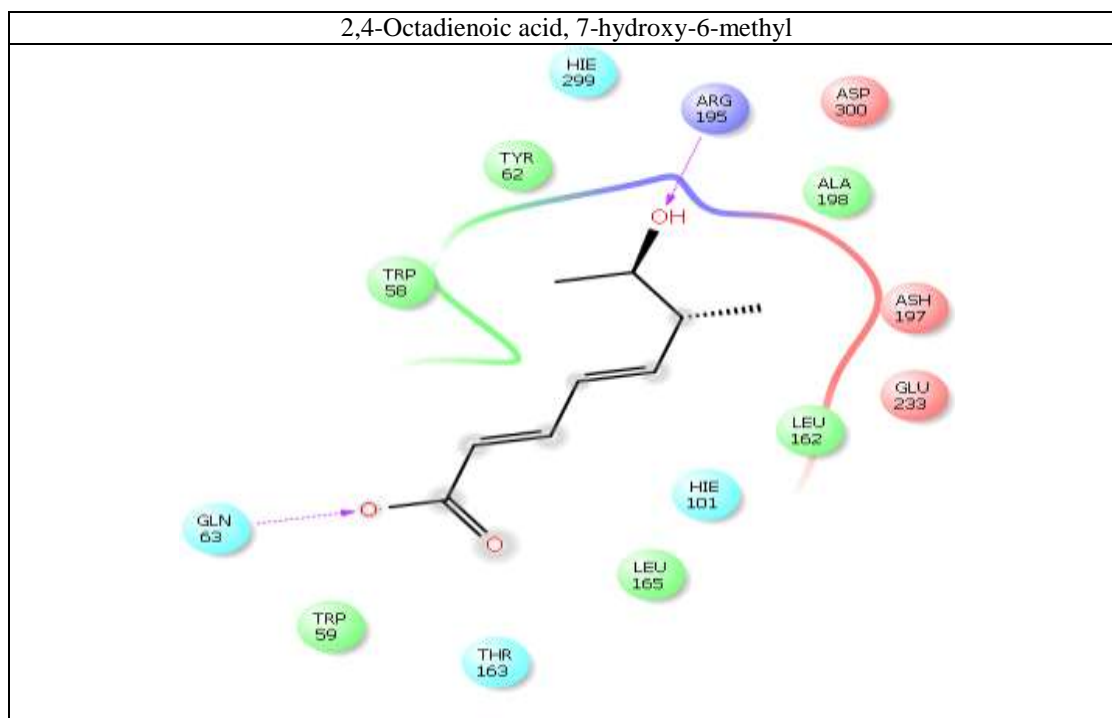
GLIDE receptor grid was generated to determine the size of the active site. The most probable orientation of the ligands in the binding pocket is identified and a scoring function is used to quantify the strength of the interaction a molecule can make in a particular orientation. In order to provide better correlation between good poses and good scores, the GLIDE XP precision was favored over the standard mode.

The docking analysis was done for the ligands such with the target protein  $\alpha$ -amylase using the docking software GLIDE and the docked images are shown. The structures docked by GLIDE are generally ranked according to the GLIDE Scoring Function (more negative). The scoring function of GLIDE docking program is presented in the G-score form. The most straightforward method of evaluating the accuracy of a docking procedure is to determine how closely the lowest energy pose (binding conformation) predicted by the object scoring function. In the present study, Extra Precision GLIDE docking procedure was validated by removing the inhibitor compound with  $\alpha$ -amylase protein has been analyzed from the G-score, GLIDE energy and H-bonds. To study the molecular basis of interaction and affinity of binding of ligand analogues to  $\alpha$ -amylase protein, all the ligands were docked into the active site of  $\alpha$ -amylase. The docking result of these ligands is given in table 1. The interaction energy includes van der Waals energy, electrostatic energy, as well as intermolecular hydrogen bonding were calculated for each minimized complex. The docking score using GLIDE varied from -1.07958 to -6.38973 against  $\alpha$ -amylase. The GLIDE Score for, a standard Acarbose docked with  $\alpha$ -amylase was found to be -6.3. This proves that chemical constituent present in the plant could be potential drugs for Anti-diabetic activity drug development. The GLIDE score can be used as a semi-quantitative descriptor for the ability of ligands to bind to a specific conformation of the protein receptor. Generally speaking, for low GLIDE score, good ligand affinity to the receptor may be expected. Especially, compounds 1,2-Benzenedicarboxylic acid, diisooctyl ester. mol, Vitamin D3.mol, 2-Propyl-tetrahydropyran-3-ol, d-Mannose.mol, 2H-Pyran, 2-(7-heptadecyloxy)tetrahydro, 2,4-Octadienoic acid, 7-hydroxy-6-methyl, 2-Furancarboxaldehyde, 5-(hydroxymethyl) were found to be potent with a docking score of -6.38973 and -4.99923 respectively. We found a very good agreement between the localization of the inhibitor upon docking and from the crystal structure of the protein. Conformational analysis of different docked complexes also shows that residues ASP 197, ALA 198, LYS 200, HIS 201, GLU233, ILE 235, HIS 305 and ALA 307 for  $\alpha$ -amylase protein plays important role in this receptor's activity. Docking studies performed by GLIDE has confirmed that above inhibitors fit into the binding pocket of the  $\alpha$ -amylase protein. From the

results, we may observe that for successful docking, intermolecular hydrogen bonding and lipophilic interactions between the ligand and the receptor are very

important. The main reason for the increase in GLIDE score is due to the penalties for close intra-ligand.





S NO	Compounds	Glide score
1.	Vitamin D3	-6.38973
2.	2-Furancarboxaldehyde, 5-(hydroxymethyl)	-4.99923
3.	2H-Pyran, 2-(7-heptadecyloxy)tetrahydro-.mol	-4.84132
4.	2,4-Octadienoic acid, 7-hydroxy-6-methyl	-4.46208
5.	d-Mannose.mol	-4.37724
6.	2-Propyl-tetrahydropyran-3-ol	-4.31522
7.	1,2-Benzenedicarboxylic acid, diisooctyl ester.mol	-3.98295
8.	Octadecanoic acid, ethyl ester	-3.32586
9.	Z,Z,Z-1,4,6,9-Nonadecatetraene.mol	-3.09276
10.	9,12,15-Octadecatrienoic acid, methyl ester, (Z,Z,Z)-	-3.06564
11.	8-Methyl-6-nonenoic acid.mol	-3.04673
12.	Docosanoic acid, ethyl ester	-2.97458
13.	Cis-z-.alpha.-bisabolene epoxide, ID: U131712	-2.70509
14.	Phytol	-2.51916
15.	Propane, 1,1,3-triethoxy	-2.22348
16.	D-Glucose, 4-O-à-D-glucopyranosyl.mol	-2.21441
17.	9-Acetynonanal	-2.13552
18.	9,12-Octadecadienoic acid, methyl ester, (E,E)	-1.95261
19.	trans-2-Undecen-1-ol	-1.17428
20.	9-Octadecenamide, (Z)- (Oleamide).mol	-1.07958
21.	Standard (Acarbose)	-7.87098

## CONCLUSION

In conclusion, the results of the present study clearly demonstrated that vitamin D3.mol, 1,2-Benzenedicarboxylic acid, diisooctyl ester.mol, 2-Propyl-tetrahydropyran-3-ol, d-Mannose.mol, 2H-Pyran, 2-(7ptadecyloxy) tetrahydro, 2,4-Octadienoic acid, 7-hydroxy-6-methyl, 2-Furancarboxaldehyde, 5-(hydroxymethyl) excellent binding sites and interactions with  $\alpha$ -amylase compared to the standard. Further investigations on the above compounds and *in vivo* studies are necessary to develop potential chemical entities for the prevention and treatment of diabetes.

## REFERENCE

- Sharma B, Salunke R, Satapati SK, Balomajumder C, Roy P. Screening of some indian medicinal plant extracts for their antihyperglycemic activities in streptozotocin-induced diabetic mice. *Journal of Food Biochemistry*. 2011 Oct 1; 35(5): 1398-406.
- Devi JA, Ramprasad R, Anil N. MOLECULAR DOCKING STUDIES ON PHYTOCONSTITUENTS OF PLEIOSPERMIUM ALATUM AGAINST  $\alpha$ -AMYLASE ENZYME.

3. Giacco F, Brownlee M. Oxidative stress and diabetic complications. *Circulation research*, 2010 Oct 29; 107(9): 1058-70.
4. Schade DS. Surgery and diabetes. *Medical Clinics of North America.*, 1988 Nov 1; 72(6): 1531-43.
5. Edwards JL, Vincent AM, Cheng HT, Feldman EL. Diabetic neuropathy: mechanisms to management. *Pharmacology & therapeutics*, 2008 Oct 31; 120(1): 1-34.
6. Levine F, Leibowitz G. Towards gene therapy of diabetes mellitus. *Molecular medicine today*, 1999 Apr 1; 5(4): 165-71.
7. Endemann DH, Schiffrin EL. Endothelial dysfunction. *Journal of the American Society of Nephrology*, 2004 Aug 1; 15(8): 1983-92.
8. Mensah GA, Mokdad AH, Ford E, Narayan KV, Giles WH, Vinicor F, Deedwania PC. Obesity, metabolic syndrome and type 2 diabetes: emerging epidemics and their cardiovascular implications. *Cardiology clinics.*, 2004 Nov 1; 22(4): 485-504.
9. Madeswaran A. *In silico* docking studies of alpha amylase inhibitory activity of some commercially available flavonoids.
10. Luna B, Hughes AT, Feinglos MN. The use of insulin secretagogues in the treatment of type 2 diabetes. *Primary Care: Clinics in Office Practice.*, 1999 Dec 1; 26(4): 895-915.
11. American Diabetes Association. Standards of medical care in diabetes—2011. *Diabetes care.*, 2011 Jan 1; 34(Supplement 1): S11-61.
12. Bhandari MR, Jong-Anurakkun N, Hong G, Kawabata J.  $\alpha$ -Glucosidase and  $\alpha$ -amylase inhibitory activities of Nepalese medicinal herb Pakhanbhed (*Bergenia ciliata*, Haw.). *Food Chemistry*, 2008 Jan 1; 106(1): 247-52.
13. Tundis R, Loizzo MR, Menichini F. Natural products as  $\alpha$ -amylase and  $\alpha$ -glucosidase inhibitors and their hypoglycaemic potential in the treatment of diabetes: an update. *Mini reviews in medicinal chemistry*, 2010 Apr 1; 10(4): 315-31.
14. Sinha AK, Kumar V, Makkar HP, De Boeck G, Becker K. Non-starch polysaccharides and their role in fish nutrition—A review. *Food Chemistry*, 2011 Aug 15; 127(4): 1409-26.
15. Trinick TR, Laker MF, Johnston DG, Keir M, Buchanan KD, Alberti KG. Effect of guar on second-meal glucose tolerance in normal man. *Clinical Science*, 1986 Jul 1; 71(1): 49-55.
16. Falkén Y, Hellström PM, Holst JJ, Näslund E. Changes in glucose homeostasis after Roux-en-Y gastric bypass surgery for obesity at day three, two months and one year after surgery: role of gut peptides. *The Journal of Clinical Endocrinology & Metabolism*, 2011 Jul 1; 96(7): 2227-35.
17. Sudha P, Zinjarde SS, Bhargava SY, Kumar AR. Potent  $\alpha$ -amylase inhibitory activity of Indian Ayurvedic medicinal plants. *BMC complementary and alternative medicine*, 2011 Jan 20; 11(1): 5.
18. Ponnusamy S, Ravindran R, Zinjarde S, Bhargava S, Ravi Kumar A. Evaluation of traditional Indian antidiabetic medicinal plants for human pancreatic amylase inhibitory effect in vitro. *Evidence-Based Complementary and Alternative Medicine*. 2010 Sep 23; 2011.
19. Veeresham C. Natural products derived from plants as a source of drugs.
20. Patwardhan B. Ayurveda: The designer medicine. *Indian drugs*. 2000 May; 37: 213-27.
21. Sen S, Chakraborty R. The role of antioxidants in human health. In *Oxidative stress: diagnostics, prevention and therapy* 2011 (pp. 1-37). American Chemical Society.
22. Vhuyian MM, Biva IJ, Saha MR, Islam MS. Anti-diarrhoeal and CNS Depressant Activity of Methanolic Extract of *Saccharum spontaneum* Linn. *Stamford Journal of Pharmaceutical Sciences*. 2008; 1(1): 63-8.
23. Kumar CA, Varadharajan R, Muthumani P, Meera R, Devi P, Kameswari B. Psychopharmacological studies on the stem of *Saccharum spontaneum*. *International Journal of PharmTech Research*. 2010; 2(1): 319-21.
24. Sathya M, Kokilavani R. In-vitro free radical scavenging activity of ethanolic root extract of *Saccharum spontaneum* Linn. *Elixir Applied. Biology*. 2013 Mar 5; 56: 13417-21.
25. Naik PK, Santoshi S, Rai A, Joshi HC. Molecular modelling and competition binding study of Br-noscapine and colchicine provide insight into noscapinoid-tubulin binding site. *Journal of Molecular Graphics and Modelling*. 2011 Jun 30; 29(7): 947-55.
26. Perumal P, Pandey VP, Parasuraman P. Docking studies on some novel piperidine analogues against DNA gyrase enzyme. *Inventi Rapid Molecular Modeling*. 2014; 1: 1-4.
27. Talele TT, McLaughlin ML. Molecular docking/dynamics studies of Aurora A kinase inhibitors. *Journal of Molecular Graphics and Modelling*. 2008 Jun 30; 26(8): 1213-22.