

## CREATIVITY OF SPIDER IN FINE COB WEB

<sup>1</sup>Bipasha Pal, <sup>1</sup>Rudra Pratap Sen, <sup>1</sup>Ajoy Mondal, <sup>1</sup>Shankha Bhattacharyya, <sup>2</sup>Dr. Dhrubo Jyoti Sen<sup>1</sup>Gupta College of Technological Sciences, Ashram More, G. T. Road, P.O. Asansol, West Bengal-713301, India.<sup>2</sup>School of Pharmacy, Techno India University, Salt Lake City, Sector-V, EM: 4/1, Kolkata-700091, West Bengal, India.**\*Corresponding Author: Bipasha Pal**

Gupta College of Technological Sciences, Ashram More, G. T. Road, P.O. Asansol, West Bengal-713301, India.

DOI: <https://doi.org/10.5281/zenodo.20179342>**How to cite this Article:** 1\*Bipasha Pal, 1Rudra Pratap Sen, 1Ajoy Mondal, 1Shankha Bhattacharyya, 2Dr. Dhrubo Jyoti Sen. (2026). Creativity of Spider In Fine Cob Web. European Journal of Pharmaceutical and Medical Research, 13(5), 723–731. This work is licensed under Creative Commons Attribution 4.0 International license.

Article Received on 05/04/2026

Article Revised on 25/04/2026

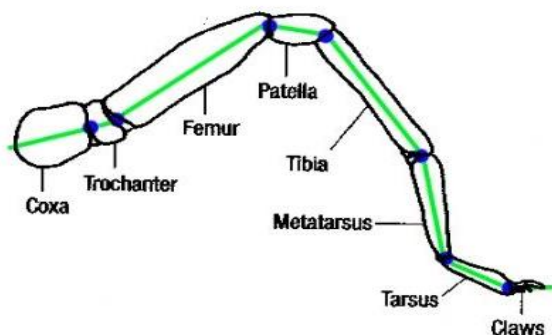
Article Published on 01/05/2026

**ABSTRACT**

Spiders (order Araneae) are air-breathing arthropods that have eight limbs, chelicerae with fangs generally able to inject venom, and spinnerets that extrude silk. They are the largest order of arachnids and rank seventh in total species diversity among all orders of organisms. Spiders are found worldwide on every continent except Antarctica, and have become established in nearly every land habitat.

**KEYWORDS:** Arthropod, spinnerets, silk, cob web, orb web.**INTRODUCTION**

Spiders have eight legs, each composed of seven segments (*coxa*, *trochanter*, *femur*, *patella*, *tibia*, *metatarsus*, and *tarsus*) and powered by hydraulic pressure (blood) rather than just muscles for extension on *claws*. They use specialized hairs (*setae*) on their legs to sense vibrations, sounds, and scents.<sup>[1]</sup>

**Figure 1: Spider Leg Anatomy.****Key Facts about Spider Legs**

- **Leg Count:** Spiders have four pairs of walking legs, distinguishing them from insects, which have six legs.
- **Segments:** Each leg has seven distinct segments, with claws at the tip.

- **Movement Mechanism:** Spider legs work via hydraulic pressure. When the heart pumps blood into the legs, they extend; when blood is withdrawn, they contract.
- **Sensory Input:** Lacking antennae, spiders rely on hairs on their legs to detect their environment.
- **Missing Legs:** Spiders can survive with fewer than eight legs, but if they lose legs before their final molt, they may regenerate them.
- **Leg Anatomy:** The segments are: coxa, trochanter, femur, patella, tibia, metatarsus, and tarsus.

**Functionality**

- **Locomotion:** The hydraulic system allows for walking and crawling.
- **Web Spinning:** Specialized claws (usually three) help web-spinning spiders navigate their webs, while hunting spiders often have two.
- **Sensory Perception:** Setae pick up scent, sound, vibration, and air currents.

Spiders belong to the order Araneae, which contains over 130 distinct families. These families are broadly divided.



Figure 2: Spider & Cobweb.

**Mygalomorphae (tarantulas)** and **Araneomorphae (true spiders)**. Major, well-known spider families include Salticidae (*jumping spiders*), Theridiidae (*comb-footed spiders*), and Araneidae (*orb-weavers*).<sup>[2]</sup>

Key spider families and examples include:

Salticidae: Jumping spiders.

Theridiidae: Comb-footed spiders (includes widows).

Araneidae: Orb-weavers.

Lycosidae: Wolf spiders.

Sparassidae: Huntsman spiders.

Agelenidae: Funnel-web spiders.

Mesothelae, Araneomorphae and Mygalomorphae.

Spiders are part of the class Arachnida, which includes other eight-legged, air-breathing arthropods like scorpions and ticks.<sup>[3]</sup>

#### Taxonomy

Kingdom: Animalia

Phylum: Arthropoda

Subphylum: Chelicerata

Class: Arachnida

Clade: Tetrapulmonata

Order: Araneae

#### Suborders

Mesothelae: Segmented abdomen spiders (most primitive).

Mygalomorphae: Tarantulas and trapdoor spiders.

Araneomorphae: Modern spiders (largest suborder).

Total Species: As of early 2026, over 53,680 spider species are recognized.

Classification Authority: The World Spider Catalog is the comprehensive, living database tracking taxonomic changes, new species, and reclassifications.

Major Families: Salticidae (jumping spiders) is the largest family, comprising 13% of all spider species. Other major families include Araneidae, Lycosidae (wolf spiders), and Theridiidae.

Characteristics: Almost all are predatory, possess venomous fangs, and spin silk.

Diversity: Spiders are present on every continent except Antarctica.

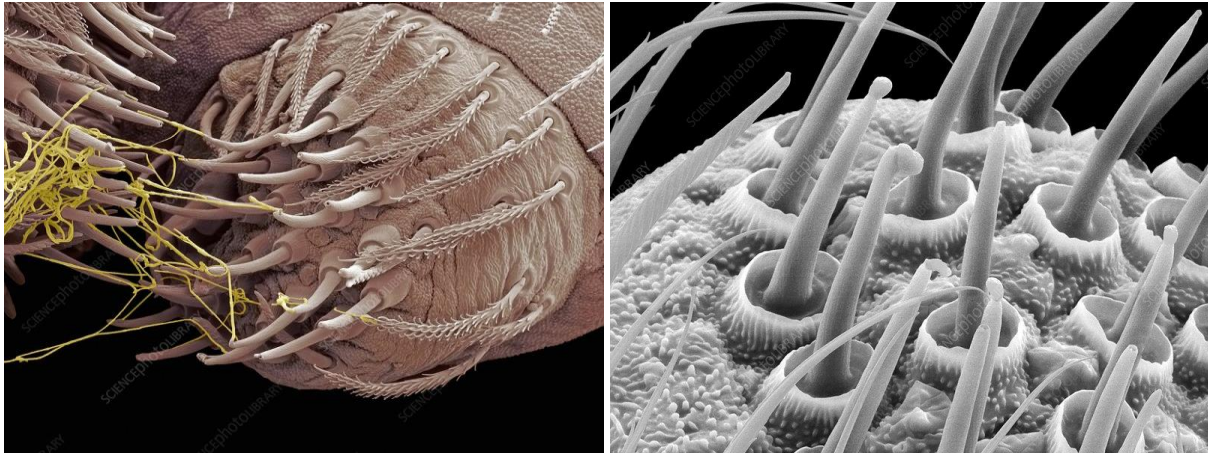
#### History & Evolution

**Founders:** Linnaeus initially placed all spiders in a single genus, Aranea.

**Growth:** Species descriptions have accelerated over centuries, particularly in the 19th and 20th centuries.

**Recent Trends:** The taxonomy is increasingly focusing on molecular phylogeny to clarify relationships within the order Araneae.

Key Taxonomic Details: A spider web is a structure made of proteinaceous silk produced by spiders from their spinnerets, primarily designed to catch prey, create retreats, or wrap eggs. The silk is a liquid inside the spider that solidifies upon contact with air, often featuring gluey, stretchy threads to trap insects. Types include orb, funnel, and sheet webs. Most spiders are venomous, but few are medically significant to humans. The most dangerous include the Brazilian Wandering Spider (most toxic), Australian Funnel-web spider (highly lethal), Black Widow, and Brown Recluse. Their venom is generally either neurotoxic (attacking nerves) or necrotic (destroying tissue), requiring immediate medical attention.



**Figure 3: Spinneret SEM.**

Spinnerets, imaged via Scanning Electron Microscopy (SEM), are specialized, segmented appendages on a spider's abdomen, usually numbering three pairs, which extrude liquid silk from internal glands, turning it into hardened protein fibres. SEM imagery reveals distinct spigots—tiny nozzles—that manipulate silk for various uses like web construction, prey wrapping, and safety lines.<sup>[4]</sup>

#### Key Aspects of Spinneret Structure (SEM Perspective)

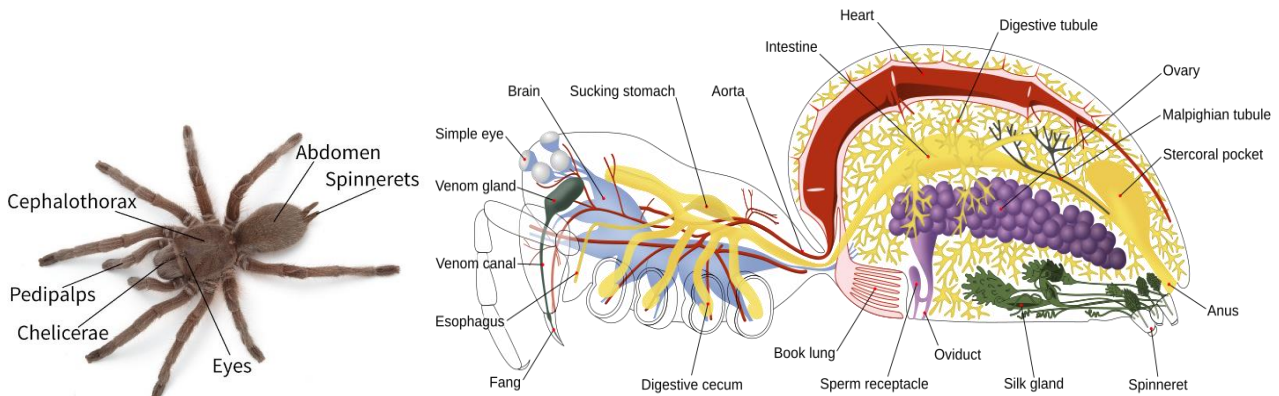
**Location & Structure:** Situated on the underside of the abdomen, they are mobile, conical or tubular, and typically segmented.

**Spigots:** Each spinneret features numerous tiny tubes called spigots, each connected to a specific silk gland.

**Silk Varieties:** SEM reveals different spigot types, specialized for producing varied silk types, such as major ampullate (dragline) and aggregate (sticky) silks.

**Diversity:** While most spiders have six spinnerets, some have two, four, or eight, allowing for specialized web-building techniques.<sup>[5]</sup>

**Function:** They allow spiders to independently move and manipulate silk, creating complex structures and functional silk fibres for hunting, nesting, and locomotion. SEM images often capture the intricate, fibre-like nature of the extruded silk at high magnification (e.g.,  $\times 125$  to  $\times 600$ ).



**Figure 4: Spider anatomy.**

Spinnerets are specialized, mobile, and typically segmented silk-spinning organs located on the underside of a spider's abdomen (opisthosoma). Most spiders possess three pairs (six total) of these appendages, which contain microscopic nozzle-like structures called spigots that extrude liquid silk, hardening it into fibre as it is pulled out. Spinnerets are silk-producing abdominal organs, usually appearing in pairs (typically three pairs) on the rear underside of a spider, which emit liquid silk that solidifies into solid filaments upon contact with air.

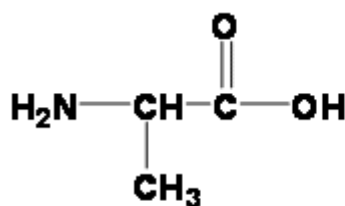
These finger-like organs contain microscopic spigots that allow spiders to combine various silk types, such as the sticky, tangled threads used by Theridiidae spiders to construct cobwebs.

#### Key Aspects of Spinnerets and Cobweb Production

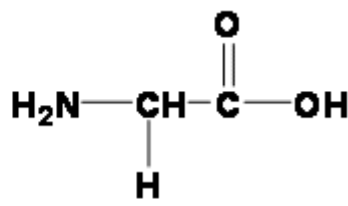
**Mechanism:** Inside the abdomen, silk is liquid; as it passes through the spinnerets' spigots, the silk protein molecules orient themselves, forming solid, strong, and flexible fibres.<sup>[6]</sup>

**Cobweb Construction:** Cobwebs, primarily made by the family Theridiidae, are irregular, tangled webs rather

than geometric, using sticky, fine silk tailored to trap prey in three-dimensional space.



alanine



glycine

Figure 5: Amino acids; alanine & glycine: the building block of cobweb.

Real cobwebs are abandoned spider webs composed primarily of silk proteins (alanine and glycine) coated in dust and debris. They are often messy, stray strands rather than structured orb webs. Edible, decorative cobwebs for food are typically made from melted marshmallows, spun sugar (sugar, water, corn syrup), or gelatin. Cobweb spiders (family Theridiidae) are small-to-medium spiders known for building messy, tangled, three-dimensional webs in corners, basements, and dark areas. They are often called comb-footed spiders due to specialized bristles on their hind legs used to wrap prey in silk. While most are harmless and control pests, the family includes dangerous species like black widows

**Orb webs** are large, circular, and symmetrical webs typically found outdoors, constructed by orb-weaver spiders to catch flying insects. **Cobwebs** are irregular, messy, tangled webs found in dark corners, ceilings, or abandoned spaces, often made by house spiders (e.g., black widows) and typically accumulate dust over time.<sup>[7]</sup>

#### Key Differences

**Structure:** Orb webs are geometric with spokes and a spiral. Cobwebs are tangled, non-spherical, and random.

**Location:** Orb webs are often in open spaces, gardens, and forests. Cobwebs are inside homes, corners, and under furniture.

**Purpose:** Orb webs trap flying insects. Cobwebs are designed for trapping wandering, crawling insects.

**Appearance:** Orb webs look like the "classic" spiderweb. Cobwebs often look like dirty or old webs, although they can be active webs, notes.

#### Orb Webs

**Appearance:** Distinctive, circular shapes, often called "geometric" webs.

**Web Type:** Sticky silk spirals designed to catch flying prey.

**Common Spider:** Garden spiders, orb-weavers (family Araneidae).

**Location:** Gardens, between trees, or open spaces.

#### Cobwebs

**Appearance:** Messy, disorganized, tangled, and often sticky, notes.

**Web Type:** Tangle webs designed to trip up crawling bugs.

**Common Spider:** House spiders, black widow spiders (family Theridiidae).

**Location:** Corners, ceiling corners, basements, and undisturbed areas

#### Natural Cobweb Ingredients (Spider Silk)

**Fibroin:** A fibrous protein that gives the silk its high tensile strength.

**Amino Acids:** Primarily alanine and glycine.

**Adhesive Proteins:** Aggregate spidroin (AgSp) 1 and 2, which create the sticky coating.

**Environmental Factors:** Dust, dirt, and debris that accumulate on the silk over time.

Spider webs, specifically orb webs, are engineered by spiders in a precise, multi-stage process starting with a wind-borne bridge thread, followed by a "Y" frame, radiating spokes, and a final, sticky capture spiral. Spiders use different silk types for strength (frame/radii) and adhesion (spiral), usually constructing their web in about an hour using their legs to measure angles and tension, often finishing with a structural hub.

#### Key Stages of Spider Web Construction

**The Bridge & Frame:** The spider releases a silk thread into the wind, letting it stick to a nearby object, then crosses to strengthen it. It creates a triangle or "Y" shape to form the main structural frame.

**The Hub & Radii:** The spider creates radial threads (spokes) extending from the center (hub) to the outer frame, creating 20–30 spokes typically spaced 15 degrees apart. The "Y-frame" is the foundational geometry a spider uses to build a circular orb web. The spider drops a loose silk thread between two points, pulls a middle strand down to create a distinct "Y" shape, and uses these anchor lines as the rigid skeleton to build the rest of the web.<sup>[8]</sup>

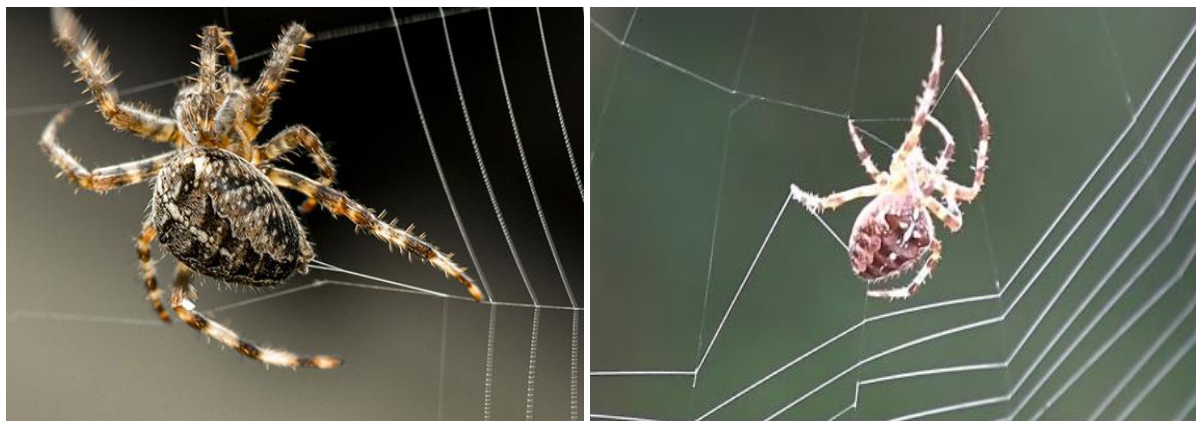


Figure 6: Spider making silk thread from spinnerets.

#### Here is how the Y-frame comes together in the wild

**The Bridge:** The spider releases a silk thread into the wind until it catches on an object (like a branch), forming the first horizontal line.

**The Dropline:** The spider drops down from the centre of that bridge to a lower branch, creating an inverted "T" shape.

**The Y-Shape:** The spider climbs back up to the centre and pulls the middle thread taut, forming the Y-frame.

**The Frame:** The spider connects the three endpoints of the "Y" to the surrounding environment to create a stable outer frame.

**The Spokes (Radii):** From the centre hub of this Y-frame, the spider adds spokes of silk stretching outward.

**Why the Y-Shape?** The Y-frame acts as the essential structural foundation. It provides the perfect geometry and tension needed for the spider to stretch out the sticky, spiralling threads of the web without causing the whole structure to collapse when catching prey. Indeed, the orb web is typically composed of compliant adhesive spiral threads, the main function of which is prey retention, supported by a scaffold made of strong and rather stiff major ampullate threads (mooring, frame and radii) keeping the sticky silk in place, dissipating the prey energy and transmitting the. Spider webs are constructed from protein fibres, with shapes adapted to catch specific prey. The four most common types are orb webs (classic, sticky spirals), funnel webs (tunnel-shaped with a retreat), sheet webs (horizontal sheets/hammocks), and tangled webs (messy, 3D cobwebs). These webs are frequently found in gardens, trees, and corners of homes.<sup>[9]</sup>

#### Here are four common types of spider webs

- **Orb Webs:** These are the most recognizable, classic two-dimensional circular webs that look like bicycle wheels or target boards. They are typically vertical and designed with sticky threads in a spiral to catch flying insects.
- **Funnel Webs:** Built by funnel-web spiders, these webs are funnel-shaped and often located on the ground or in low, thick vegetation. The spider waits inside the funnel for prey to wander across the wide, horizontal, non-sticky sheet.

- **Sheet Webs:** These are flat, or sometimes hammock-shaped, sheets of silk usually constructed in shrubs, bushes, or grass. They are often non-sticky, with tangled "knock-down" threads above them to knock flying insects into the net below.
- **Tangled Webs (or Cobwebs):** These are messy, irregular, three-dimensional webs found in dark corners, barns, and untended spaces. These webs are crafted by spiders like the widow spider (*Latrodectus*).

These types of webs are designed with varying structures, such as sticky or cribellate silk, to maximize prey capture for specific spider species. Cobweb design consists of messy, three-dimensional tangle webs built by spiders (often Theridiidae family) using proteinaceous silk to capture prey, or abandoned, dusty spider webs. Natural webs feature disorderly structures with vertical supports and a retreat, while large DIY decorative webs are made using rope or yarn strung between anchors.

#### Natural Cobweb Design & Construction

**Structure:** Unlike orderly orb webs, cobwebs are irregular, 3D tangle webs containing tangled silk strands and debris.

**Function:** Designed to trap crawling insects (ants, beetles) using a sticky, vertical, and horizontal silk structure.

**Construction:** Spiders create these webs using silk from their spinnerets, which is a strong, fibrous protein.

**Components:** The web often includes a central "retreat" where the spider hides, surrounded by a mess of sticky silk threads.

**Development:** Cobwebs are often old or abandoned webs that have collected dust over time.

#### DIY Cobweb Construction (Decoration)

**Materials:** White yarn, thick twine, or rope is used to simulate silk for Halloween or theatrical decoration.

**Technique:** Create a central hub and extend radial lines, followed by a tangled, spiral, or chaotic weaving pattern that mimics a natural messy web.

**Mounting:** Secure the web in corners, on fences, or between trees using garden stakes or hooks.

### Technical/Other Interpretations

**Radio Antenna:** The "Cobweb Antenna" is a design for radio communication (7-band) using a compact, square-shaped, dipole-based structure. Circuit Design: "Copper Cobweb" refers to a complex circuit construction technique that mimics a web structure. Cobwebs are complex, three-dimensional tangle webs created primarily by spiders in the Theridiidae family, known for a messy, irregular design that differs from orderly orb webs. These structures use sticky, elastic silk threads anchored to corners and surfaces, designed to capture crawling prey by trapping them within a complex scaffolding.

### Key Characteristics and Design

**Irregular Structure:** Unlike the "wagon wheel" orb web, cobwebs are disorganized tangles of silk often found in corners, under furniture, or near the ground.

**Sticky Traps:** The web is reinforced with sticky silk droplets, which are not just adhesive but elastic, allowing them to stretch and securely hold struggling prey.

**Functional Design:** Cobwebs often include a "retreat" (a cozy spot for the spider) and a main sheet where the spider waits for vibrations.

**Material:** Built from high-performance spider silk proteins.

### Construction Process

**Anchoring:** The spider starts by laying down a foundational strand of silk to connect surfaces.

**Scaffolding:** The spider adds threads in a random but strategic, three-dimensional manner, creating a chaotic "messy" appearance that is, in fact, highly effective.<sup>[10]</sup>

**Adhesive Application:** Sticky threads are woven into the scaffolding, typically from the centre outwards, to maximize capture potential.

**Optimization:** Starved spiders have been observed to build denser, more robust webs to maximize prey capture.

### Spider Species Associated

**Black Widow (*Latrodectus hesperus*):** Known for creating strong, messy cobwebs.

**Theridiidae family:** The primary architects of these "tangle" webs.

**Purpose:** These webs are designed specifically for catching ground-walking insects (ants, beetles) by creating a "catapult" effect that disorients them within the silk tangle.

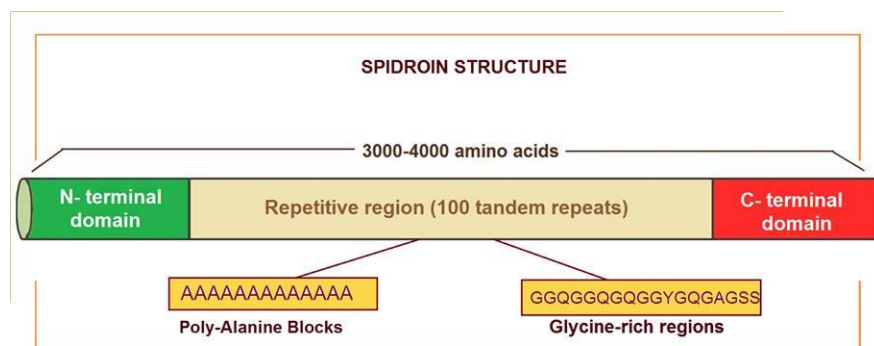


Figure-7: Spidroin structure.

Spider webs, constructed from **spidroin proteins**, are biopolymers. Biomimetic researchers use specific chemicals to dissolve, spray, or synthesize these intricate structures, while the construction industry relies on spider-web topology and anti-pest chemicals to create advanced structural meshes and control pests. Spidroins are massive, modular fibrous proteins (250–350 kDa) that constitute spider silk, characterized by a tripartite structure: a central region of highly repetitive motifs flanked by non-repetitive N- and C-terminal domains. The repetitive core, rich in alanine and glycine, forms alternating crystalline  $\beta$ -sheets (strength) and amorphous, flexible regions (extensibility). Spidroin (spider fibroin) is a specialized, high-molecular-weight protein produced by spiders to form silk, characterized by exceptional tensile strength, elasticity, and biocompatibility. Composed of repetitive amino acid sequences (mostly polyalanine and glycine-rich), spidroins undergo a conformational change from soluble proteins ( $\alpha$ -helix) to

crystalline fibres ( $\beta$ -sheets) during spinning, making them valuable for bioengineering, medical applications, and advanced materials.<sup>[11]</sup>

### Structural Components of Spidroin

- **Central Repetitive Region:** Comprises over 90% of the protein, containing 100+ tandem repeats of short sequences (30–40 amino acids).
- **Alanine blocks ( $A_n$ ,  $n=4-10$ ):** Form crystalline  $\beta$ -sheets that create strong, stacked links between molecules.
- **Glycine-rich blocks (GGX/GPGXX):** Create amorphous, elastic amorphous regions (3-10 helix and  $\beta$ -spiral structures).

### Terminal Domains

**N-terminal Domain (NT):** A five-helix bundle that acts as a pH-dependent dimerizer. It remains soluble in the

gland but triggers assembly during spinning by pairing with other NT domains when pH drops.

**C-terminal Domain (CT):** Crucial for fibre self-assembly and initiation of the  $\sigma$ -helix to  $\beta$ -sheet transition.

#### Key Types and Differences

**Spidroin-1 (MaSp1):** Rich in poly-alanine and GGX motifs; provides high tensile strength.

**Spidroin-2 (MaSp2):** Contains significant proline, rich in GPGXX, QQ, and GSG motifs; provides increased elasticity. These proteins exhibit a highly organized hierarchical structure, starting from molecular motifs, progressing through crystalline-amorphous regions, and ending as aligned protein molecular chains in the final fibres.

Spider silk and related chemical topics span several distinct disciplines:

#### 1. The Chemistry of Spider Silk

**Natural Composition:** Spidroin proteins are heavily composed of glycine and alanine, arranged in alternating crystalline and amorphous zones.

**The "Liquid" Secret:** Spiders store silk as a concentrated polymer liquid in their glands. Precise changes in body chemistry (e.g., removing water, altering salts and acidity) because the liquid to instantly transition into solid silk threads as it is drawn-out.

#### 2. Synthesizing Webs with Chemicals

**Biomimetic Silk:** Chemists synthesize artificial fibres—like nylon or rayon—using polymerization techniques (e.g., pouring sebacoyl chloride over hexane diamine).

**Electro spinning:** Engineers use electro spinning technology to dissolve natural or synthetic polymers in solvents, drawing them out with electric potential to mimic spider-web structures for medical (sutures), engineering, and energy applications.

#### 3. Spider & Cobweb Control (Chemicals & Management)

**Cobweb Eliminators:** Commercially available chemical and botanical sprays (e.g., Terro, or formulas featuring essential oils and surfactants like citronella) can be used to easily dissolve existing cobwebs and repel spiders from rebuilding.

**Structural Dusts:** Desiccant insecticides (like CimeXa dust, a mineral-derived silica) are widely used in construction and structural pest control to dehydrate spiders and insects in hard-to-reach cracks and voids.

**Dissolving Webs:** If you need to break down webs for cleaning or scientific sampling, chlorine bleach (sodium hypochlorite) rapidly dissolves spider silk.

#### 4. Bionic Design in Construction

**Impact-Resistant Materials:** Engineers increasingly look to spider-web geometry to build high-performance, impact-resistant composite meshes for infrastructure and aerospace.

**Energy Dissipation:** Structural binders and materials featuring a flexible/rigid web-like network help evenly dissipate stress and improve structural integrity in modern building and energy applications.

Spider silk is a biological masterpiece constructed from amino acids folded into specialized proteins called spidroins. These repetitive molecular building blocks give spider webs their legendary strength and elasticity.

The construction of a web relies heavily on this microscopic amino acid chemistry and the spider's innate engineering.

#### The Molecular Level: Amino Acid Makeup

**Block Copolymers:** Silk fibres consist of highly repetitive chains of amino acids (mainly glycine and alanine) acting as building blocks.

**Toughness and Elasticity:** Alanine forms rigid, crystalline structures (beta-sheets), while glycine forms rubber-like, amorphous, and stretchy regions.

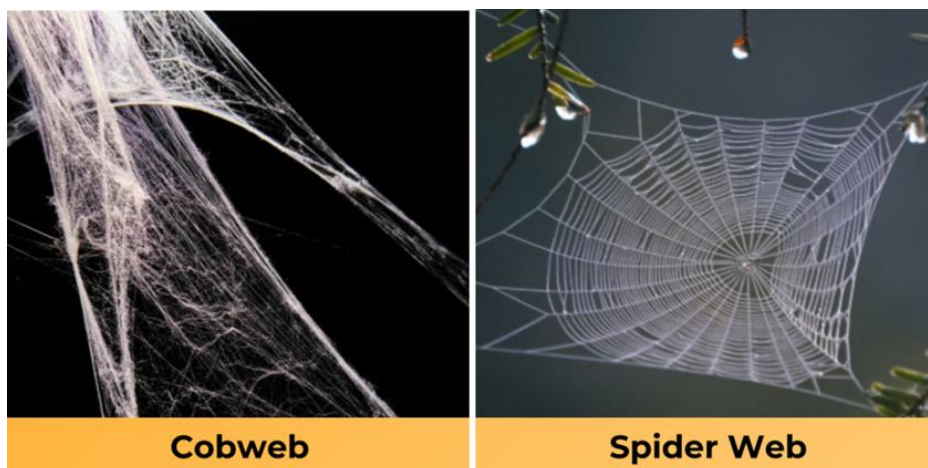


Figure 8: Cobweb & Spider web.

**The "Methionine" Edge:** Research has shown that web spiders pack the amino acid methionine into the core of their silk proteins. This rare amino acid provides incredible flexibility, acting like a moldable key to tightly connect silk proteins and reinforce bonding strength.

**The Macro Level: Construction & Design:** Spider silk is synthesized in the spider's abdomen and spun through organs called spinnerets. How the spider assembles its web depends on the species:

#### **Orb Webs (e.g., Garden Spiders)**

**Structural Threads:** The spider releases a "bridge line" into the wind to catch an anchor point, then fills in sturdy radii (spokes) and a frame using rigid silk.

**Capture Spiral:** It completes the web by laying down a spiral coated in a sticky, amino-acid-based "glue" to trap prey.

**Cobwebs (e.g., Black Widows):** These webs appear messy and disorganized but are actually three-dimensional, highly effective scaffolding designed to drop trapped insects directly onto the ground or secure retreat.

**Smart & Sustainable Engineering:** Spiders are incredibly eco-friendly builders. When rebuilding a web—or if a web is damaged—the spider will consume its old web. In doing so, it digests the silk, breaking the proteins back down into individual amino acids in its gut, which it then recycles to spin fresh, strong silk the following day.

**Orb webs** are circular, intricate, and meticulously built in open spaces, whereas cobwebs are messy, tangled, and irregular structures, usually found in corners or abandoned indoors. Orb webs serve as active, daily-renewed traps for flying insects, while cobwebs often refer to old, dust-covered, or abandoned webs.<sup>[12]</sup>

#### **Orb Webs**

**Shape:** Distinctive circular "spoke-and-wheel" or spiral pattern.

**Location:** Usually outdoors in gardens, between branches, or in open spaces to catch flying prey.

**Structure:** Often created by orb-weaver spiders, these are engineered with both strong and sticky silk.

**Maintenance:** Generally rebuilt daily to ensure maximum stickiness and efficiency.

#### **Cobwebs**

**Shape:** Messy, three-dimensional, and irregular tangle of silk strands.

**Location:** Mostly found in indoor corners, under furniture, in sheds, or in dark, undisturbed corners.

**Structure:** Built by comb-footed spiders (like the black widow), which create a thick, cottony mess.

**Maintenance:** Known for being neglected or abandoned, allowing dust and debris to collect.

#### **Key Differences Summary**

**Appearance:** Orb webs are tidy/organized; Cobwebs are messy/tangled.

**Location:** Orb webs are typically outdoor; Cobwebs are typically indoor.

**Usage:** "Cobweb" is also used to describe a dusty, old, or unused spider web.

#### **CONCLUSION**

Spidroins are the main proteins in spider silk. Different types of spider silk contain different spidroins, all of which are members of a single protein family. The most-researched type of spidroins are the major ampullate silk proteins (MaSp) used in the construction of dragline silk, the strongest type of spider silk. Dragline silk fiber was originally thought to be made up of two types of spidroins, spidroin-1 (MaSp1) and spidroin-2 (MaSp2) however recent transcriptomic analysis of over 1000 spider species has revealed multiple spidroins are expressed making it much more complex. Spidroin is part of a large group of proteins called scleroproteins. This group includes other insoluble structural proteins such as collagen and keratin. A fiber of dragline spidroin is as thick and resistant as one of steel but is more flexible. It can be stretched to approximately 135% of its original length without breaking. Its properties make it an excellent candidate for use in various scientific fields.

#### **REFERENCES**

1. Agnarsson, I. "A revision of the New World eximius lineage of Anelosimus (Araneae, Theridiidae) and a phylogenetic analysis using worldwide exemplars" (PDF). *Zoological Journal of the Linnean Society*, 2006; 146(4): 453–593.
2. Purcell, J.; Aviles, L. "Smaller colonies and more solitary living mark higher elevation populations of a social spider". *Journal of Animal Ecology*, 2007; 76(3): 590–597.
3. Oxford, G.S.; Gillespie, R.G. "Quantum Shifts in the Genetic Control of a Colour Polymorphism in Theridion Gallator (Araneae: Theridiidae), the Hawaiian Happy-Face Spider". *Heredity*, 1996; 76(3): 249–256.
4. Gillespie, R.G.; Tabashnik, B.E. "What makes a happy face? Determinants of color pattern in the Hawaiian happy face spider Theridion gallator (Araneae, Theridiidae)". *Heredity*, 1989; 62(3): 355–364.

5. Benjamin, S.P.; Zschokke, S. "Webs of theridiid spiders: construction, structure and evolution". *Biological Journal of the Linnean Society*, 2003; 78(3): 293–305.
6. Benjamin, Suresh P.; Zschokke, Samuel. "Untangling the tangle-web: web building behaviour of the comb-footed spider *Steatoda triangulosa* and comments on phylogenetic implications (Araneae: Theridiidae)". *Journal of Insect Behavior*, 2002; 15(6): 791–809.
7. Vollrath, F. "Behavior of the Kleptoparasitic Spider *Argyrodes-Elevatus* (Araneae, Theridiidae)". *Animal Behaviour*, 1979; 27: 515–521.
8. Grostal, P.; Walter, D.E. "Kleptoparasites or commensals? Effects of *Argyrodes antipodanus* (Araneae: Theridiidae) on *nephila plumipes* (Araneae: Tetragnathidae)". *Oecologia*, 1997; 111(4): 570–574.
9. Blackledge, T.A.; Swindeman, J.E.; Hayashi, C.Y. "Quasistatic and continuous dynamic characterization of the mechanical properties of silk from the cobweb of the black widow spider *Latrodectus hesperus*". *Journal of Experimental Biology*, 2005; 208(10): 1937–1949.
10. Blackledge, T.A.; Zevenbergen, J.M. "Condition dependent spider web architecture in the western black widow *Latrodectus hesperus*". *Animal Behaviour*, 2007; 73(5): 855–864.
11. Benjamin, Suresh P.; Zschokke, Samuel. "Webs of theridiid spiders: construction, structure and evolution". *Biological Journal of the Linnean Society*, 2003; 78(3): 293–305.
12. Magalhaes, Ivan L. F.; Azevedo, Guilherme H. F.; Michalik, Peter; Ramírez, Martín J. "The fossil record of spiders revisited: implications for calibrating trees and evidence for a major faunal turnover since the Mesozoic". *Biological Reviews*. 2020; 95(1): 184–217.