



Wasser erleben

HANSASIGNATUR

INSTALLATION AND MAINTENANCE GUIDE

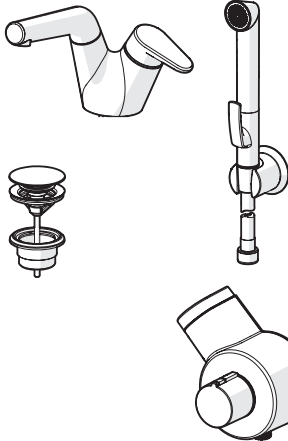


Contents

CZ Obsah	FR Sommaire	NO Innhold	SI Vsebina
DE Inhaltsübersicht	GR Περιεχόμενα	PL Spis treści	SK Obsah
DK Indholdsfortegnelse	HU Tartalom	PT Conteúdo	
ES Contenidos	IT Indice	RU Содержание	
FI Sisällysluettelo	NL Inhoud	SE Innehållsförteckning	



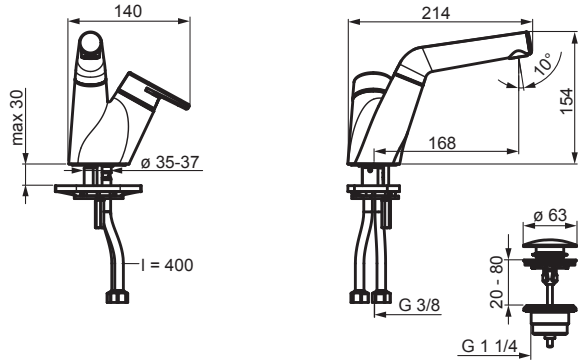
Technical data	4-5
Installation	7-9, 11, 16-17
Operation.....	17, 19
Maintenance.....	17, 20-21, 24
Spare part.....	30-31



Technical data	6
Installation	9-10, 12-18
Operation.....	17, 19
Maintenance.....	20-29
Spare part.....	32-33

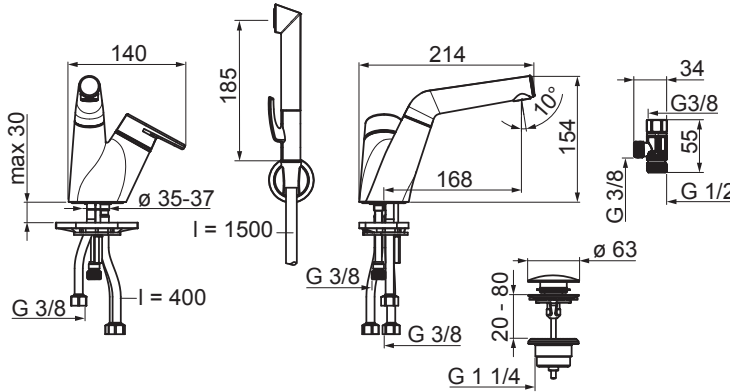
5501 2201

EN 817
 I (ISO 3822)
 50 -1000 kPa
 0.12 l/s (300 kPa)
 220 kPa (0.1 l/s)
 max. +80°C



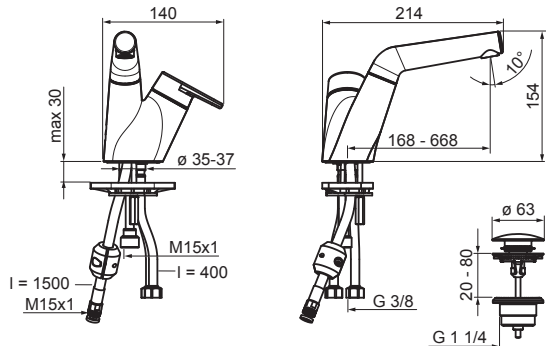
5502 2201

EN 817
 I (ISO 3822)
 50 -1000 kPa
 0.1 l/s (300 kPa)
 300 kPa (0.1 l/s)
 max. +80°C

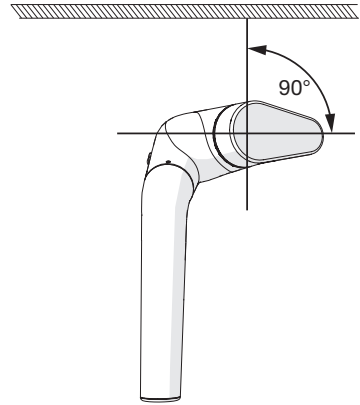


5505 2281

EN 817
 I (ISO 3822)
 50 -1000 kPa
 0.1 l/s (300 kPa)
 300 kPa (0.1 l/s)
 max. +80°C

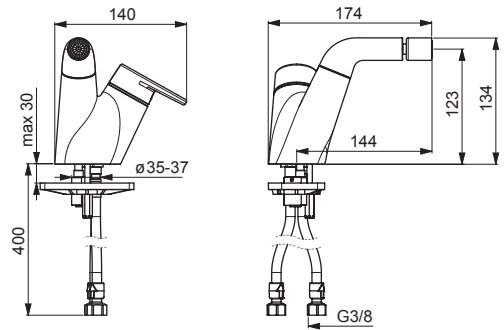


**5501 2201, 5502 2201,
5505 2281**



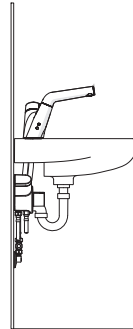
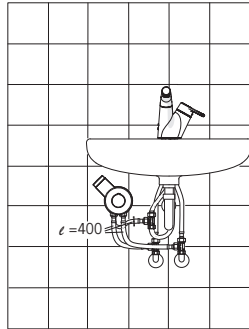
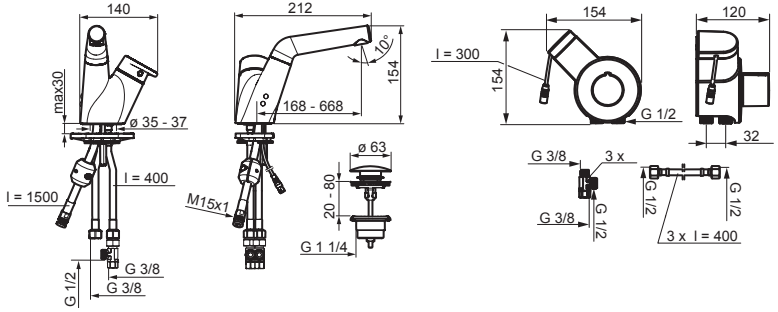
5508 3203

EN 817
I (ISO 3822)
50 -1000 kPa
0.15 l/s (300 kPa)
max. +80°C



5510 2281

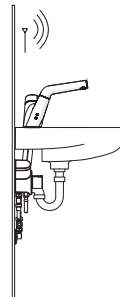
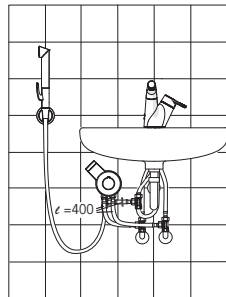
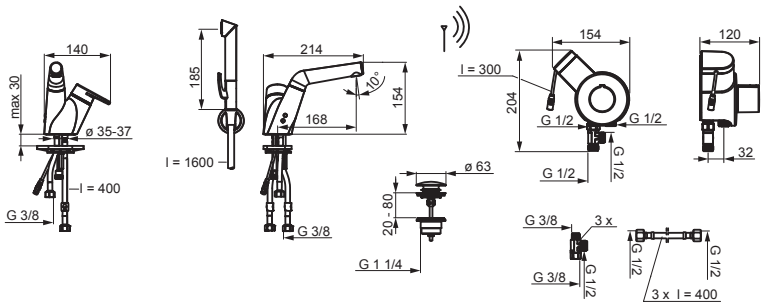
EN 817, EN15091
 I (ISO 3822)
 100 - 1000 kPa
 0.1 l/s (300 kPa)
 300 kPa (0.1 l/s)
 max. +70°C
 IP55
 AA 1.5V Lithiumx2



CE (EMC 2004/108/EY)

5511 2201

EN 817, EN15091
 I (ISO 3822)
 100 - 1000 kPa
 0.1 l/s (300 kPa)
 300 kPa (0.1 l/s)
 max. +70°C
 IP55
 AA 1.5V Lithium x 2
 CR 2450 3V



CE (EMC 2004/108/EY)

Installation

CZ Montáž

DE Montage

DK Installation

ES Montaje

FI Asennus

FR Installation

GR Συναρμολόγηση

HU Szerelés

IT Montaggio

NL Installatie

NO Montering

PL Instalacja

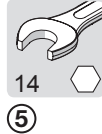
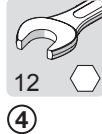
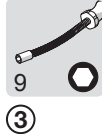
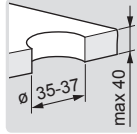
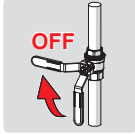
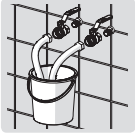
PT Instruções

RU Установка

SE Installation

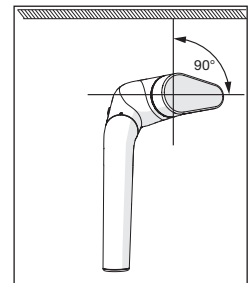
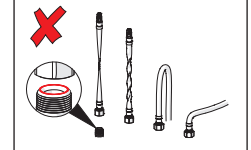
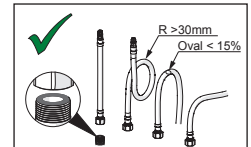
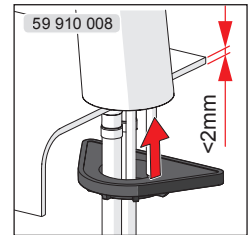
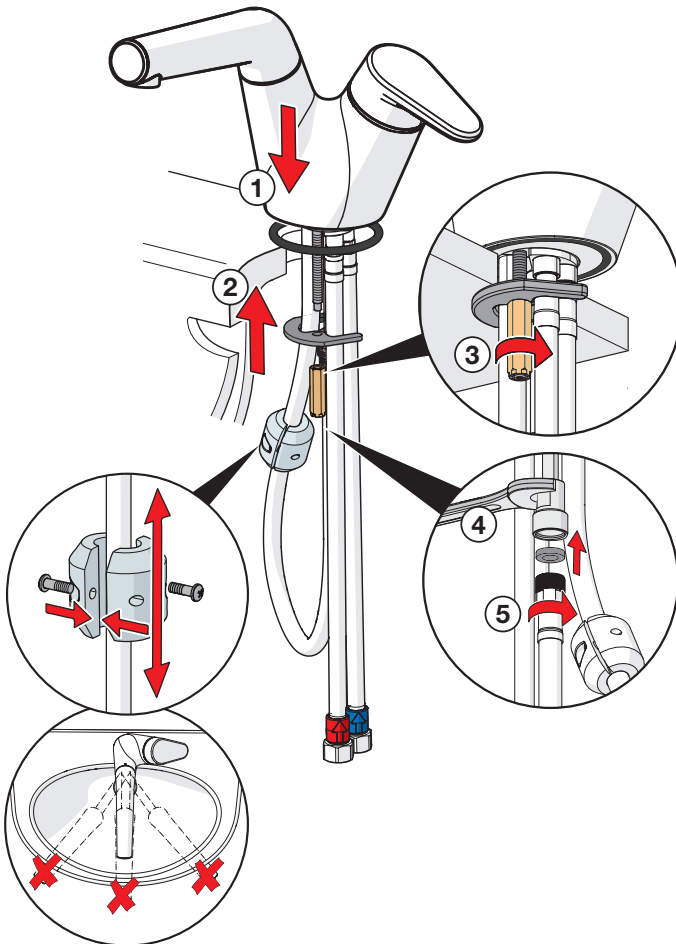
SI Montaža

SK Inštalácia



max. 1600 kPa

1 5505 2281



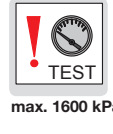
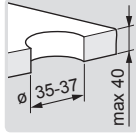
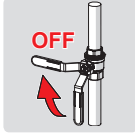
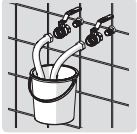
Installation

CZ Montáž
DE Montage
DK Installation
ES Montaje
FI Asennus

FR Installation
GR Συναρμολόγηση
HU Szerelés
IT Montaggio
NL Installatie

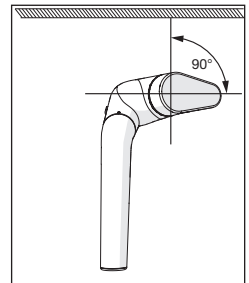
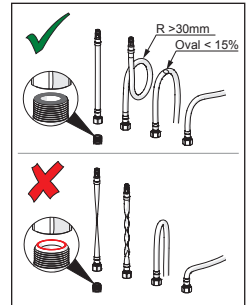
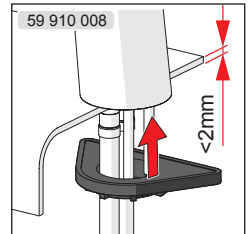
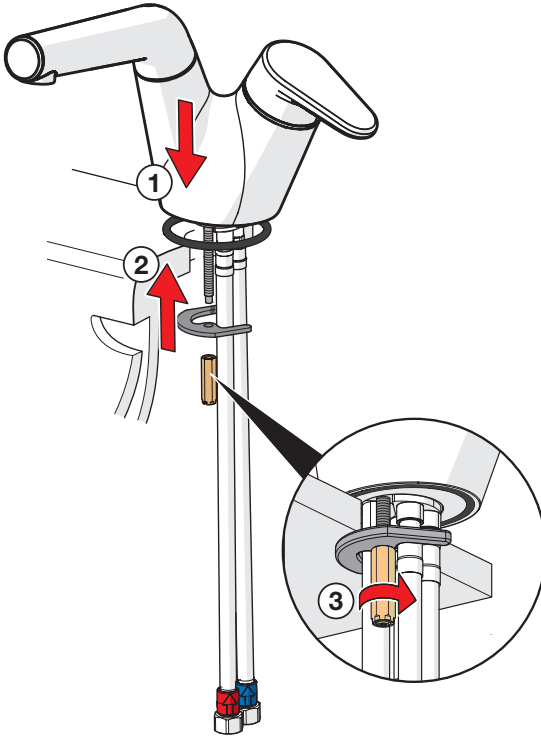
NO Montering
PL Instalacja
PT Instruções
RU Установка
SE Installation

SI Montaža
SK Inštalácia



max. 1600 kPa

1 5501 2201
 5508 3203



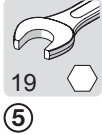
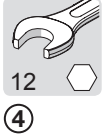
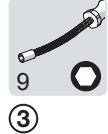
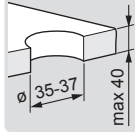
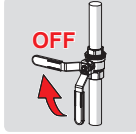
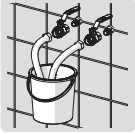
Installation

CZ Montáž
DE Montage
DK Installation
ES Montaje
FI Asennus

FR Installation
GR Συναρμολόγηση
HU Szerelés
IT Montaggio
NL Installatie

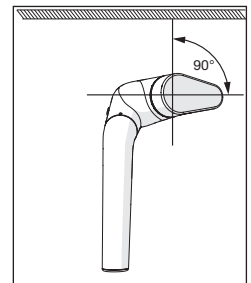
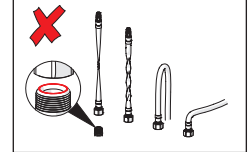
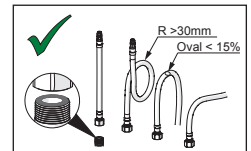
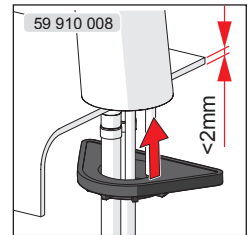
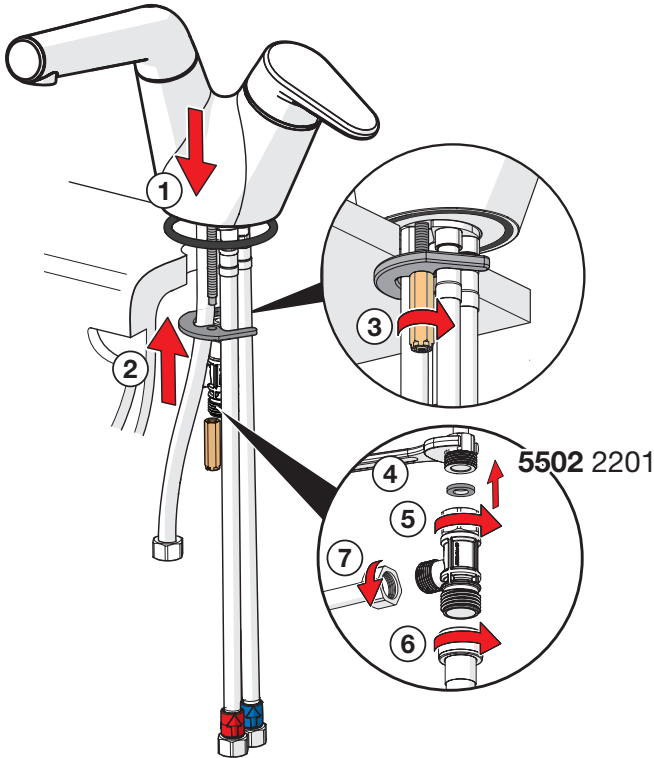
NO Montering
PL Instalacja
PT Instruções
RU Установка
SE Installation

SI Montaža
SK Inštalácia



max.
1600 kPa

1 5502 2201
 5511 2201



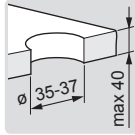
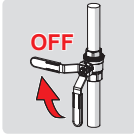
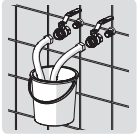
Installation

CZ Montáž
DE Montage
DK Installation
ES Montaje
FI Asennus

FR Installation
GR Συναρμολόγηση
HU Szerelés
IT Montaggio
NL Installatie

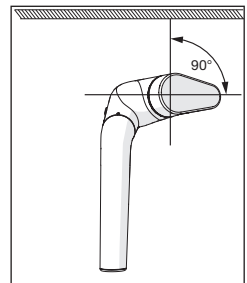
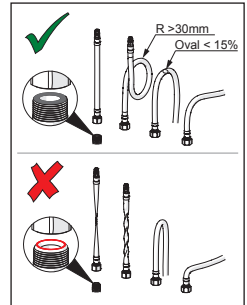
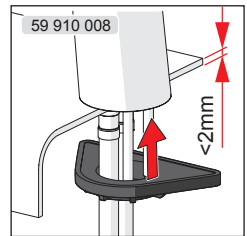
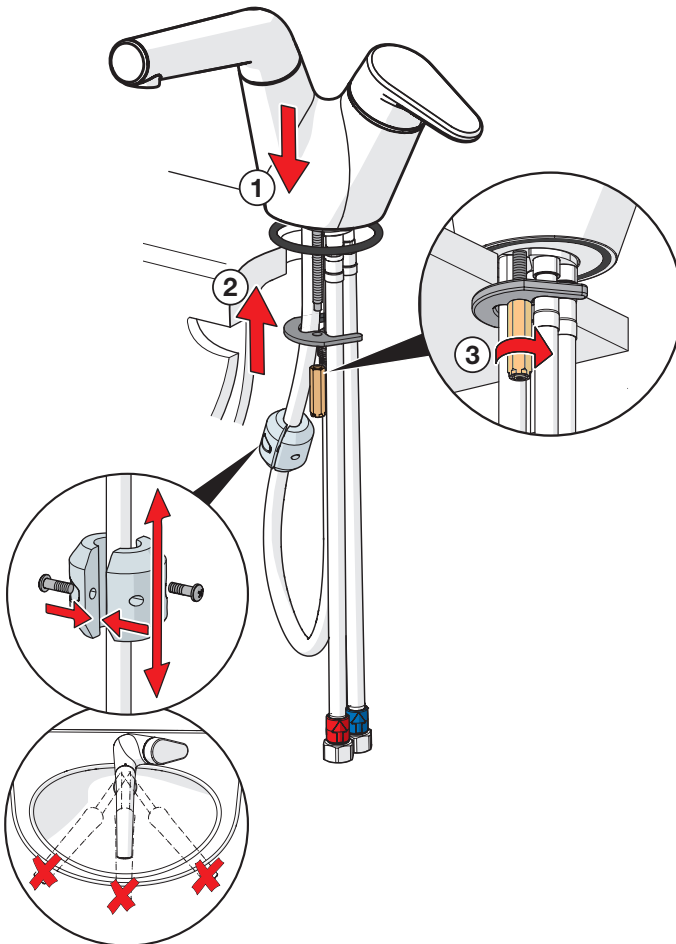
NO Montering
PL Instalacja
PT Instruções
RU Установка
SE Installation

SI Montaža
SK Inštalácia



max. 1600 kPa

1 5510 2281



Installation

CZ Montáž

DE Montage

DK Installation

ES Montaje

FI Asennus

FR Installation

GR Συναρμολόγηση

HU Szerelés

IT Montaggio

NL Installatie

NO Montering

PL Instalacja

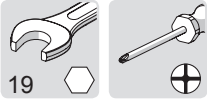
PT Instruções

RU Установка

SE Installation

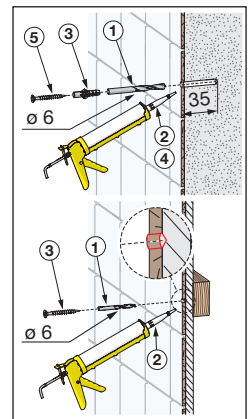
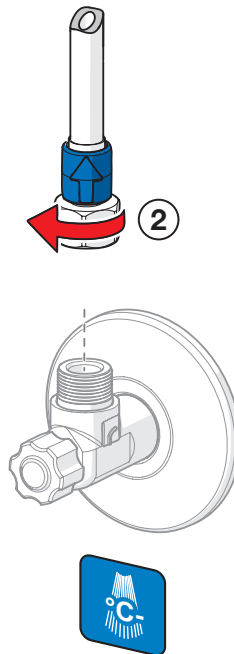
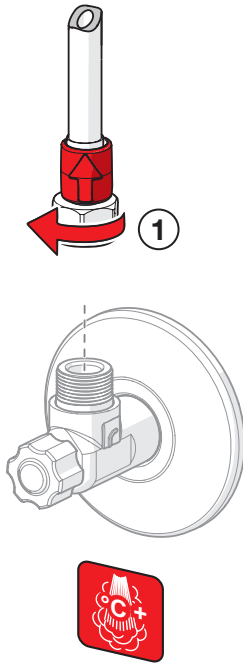
SI Montaža

SK Inštalácia



①②

- 2** 5505 2281
 5501 2201
 5508 3203
 5502 2201



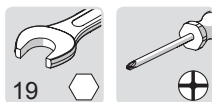
Installation

CZ Montáž
DE Montage
DK Installation
ES Montaje
FI Asennus

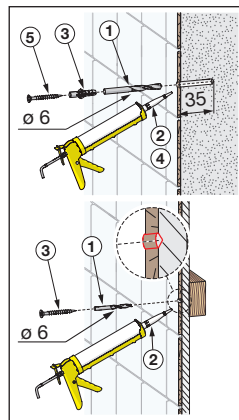
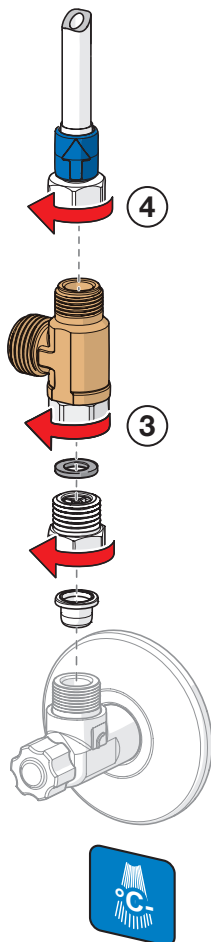
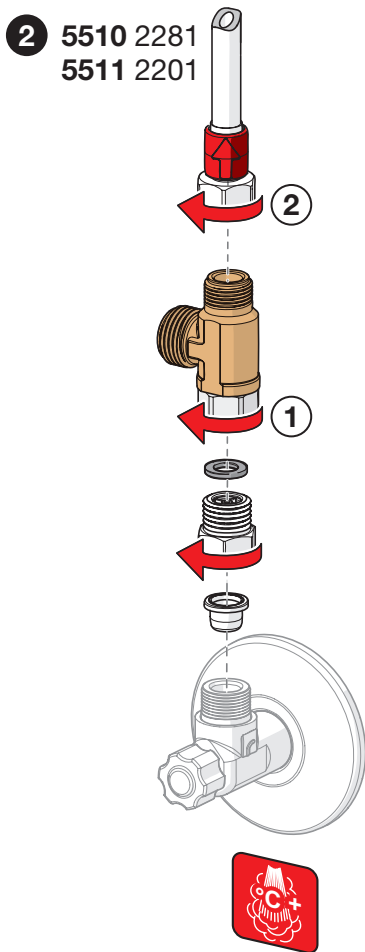
FR Installation
GR Συναρμολόγηση
HU Szerelés
IT Montaggio
NL Installatie

NO Montering
PL Instalacja
PT Instruções
RU Установка
SE Installation

SI Montaža
SK Inštalácia



①...④



Installation

CZ Montáž

DE Montage

DK Installation

ES Montaje

FI Asennus

FR Installation

GR Συναρμολόγηση

HU Szerelés

IT Montaggio

NL Installatie

NO Montering

PL Instalacja

PT Instruções

RU Установка

SE Installation

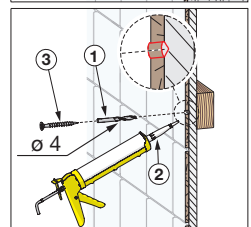
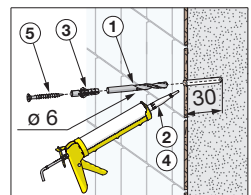
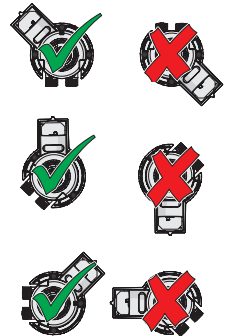
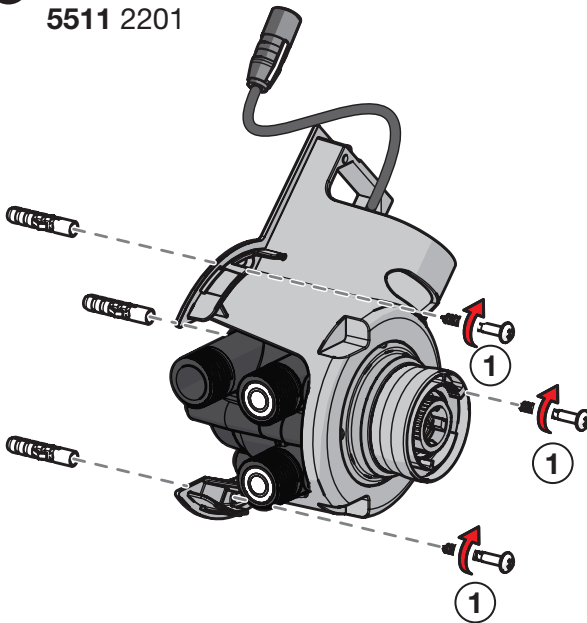
SI Montaža

SK Inštalácia



①

3 5510 2281
5511 2201



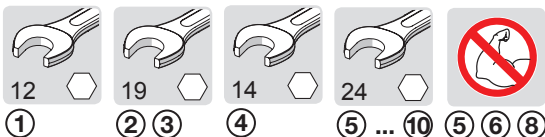
Installation

CZ Montáž
DE Montage
DK Installation
ES Montaje
FI Asennus

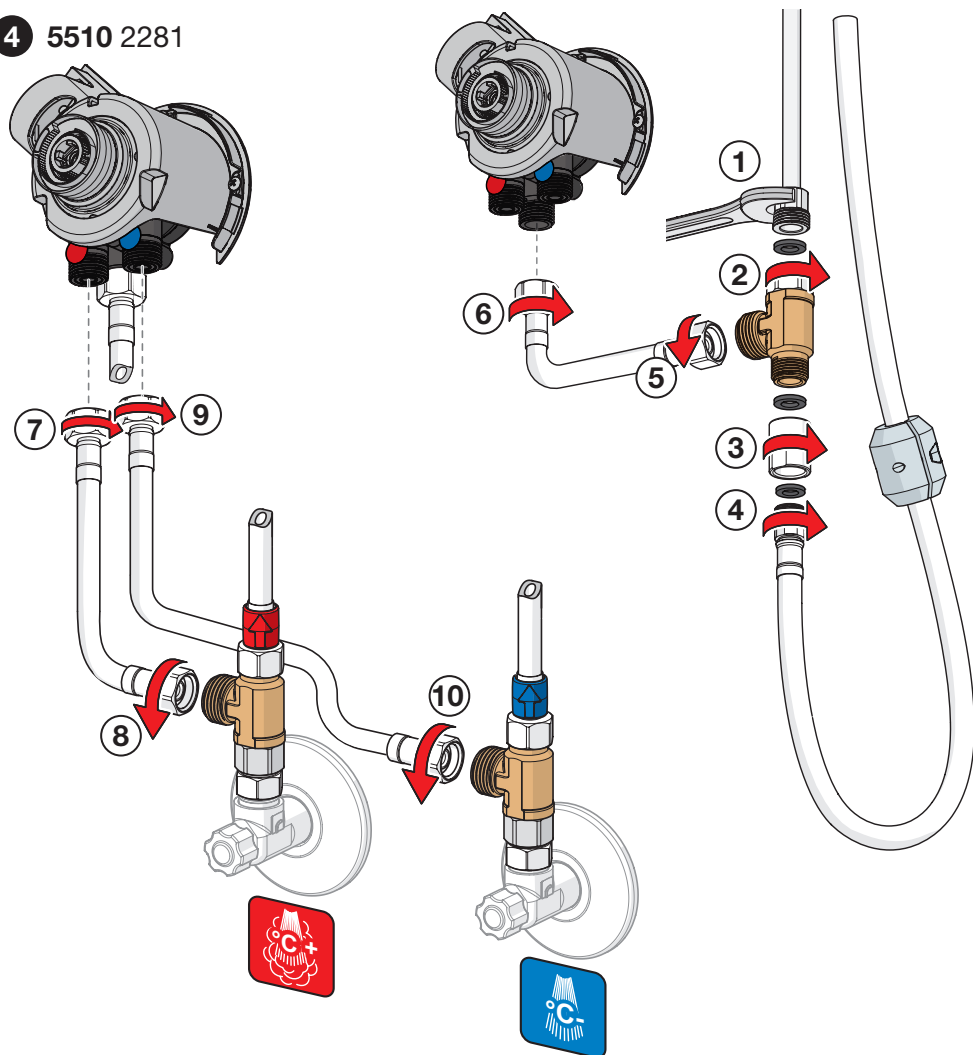
FR Installation
GR Συναρμολόγηση
HU Szerelés
IT Montaggio
NL Installatie

NO Montering
PL Instalacja
PT Instruções
RU Установка
SE Installation

SI Montaža
SK Inštalácia



4 5510 2281



Installation

CZ Montáž

DE Montage

DK Installation

ES Montaje

FI Asennus

FR Installation

GR Συναρμολόγηση

HU Szerelés

IT Montaggio

NL Installatie

NO Montering

PL Instalacja

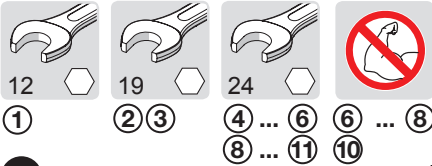
PT Instruções

RU Установка

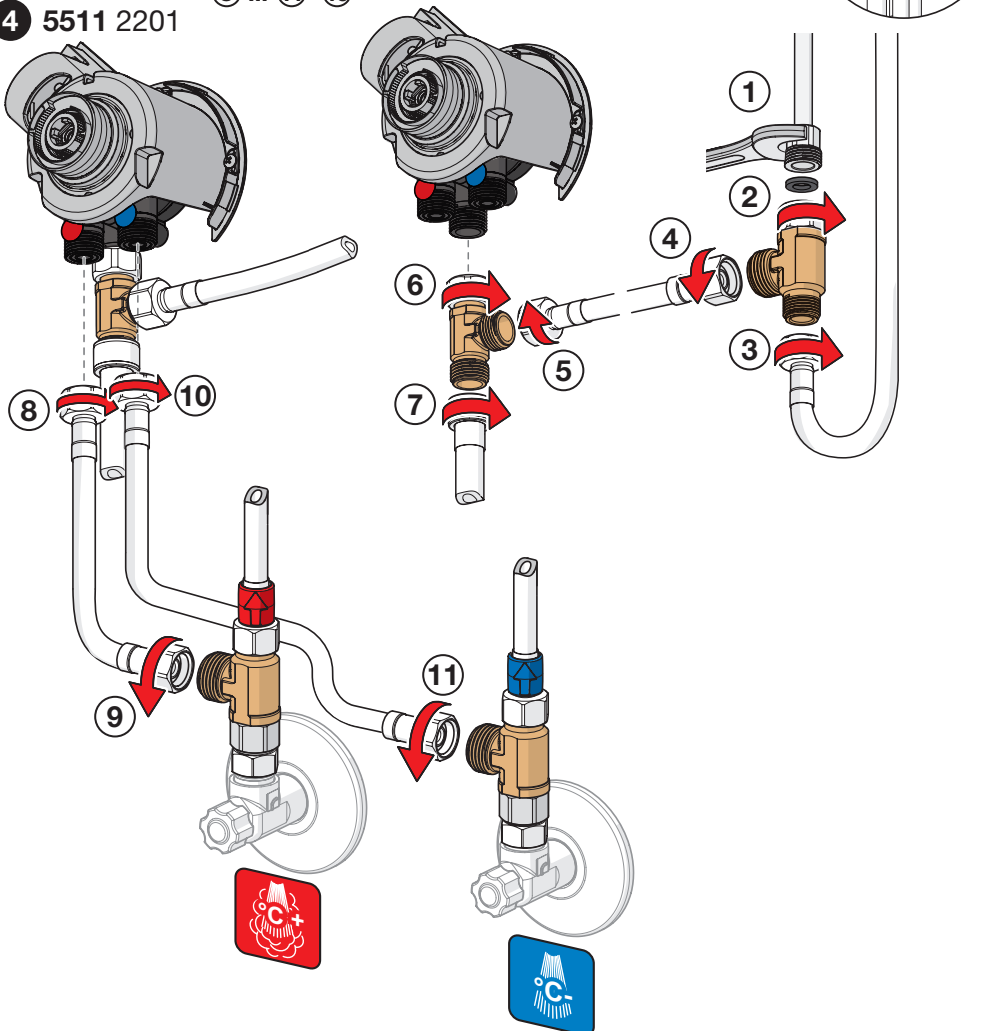
SE Installation

SI Montaža

SK Inštalácia



4 5511 2201



Installation

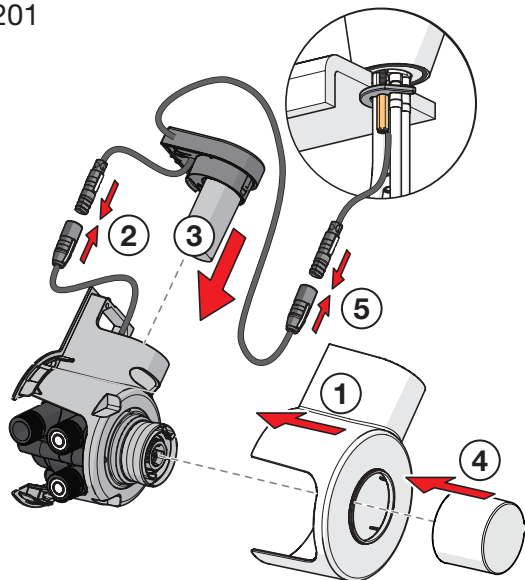
CZ Montáž
DE Montage
DK Installation
ES Montaje
FI Asennus

FR Installation
GR Συναρμολόγηση
HU Szerelés
IT Montaggio
NL Installatie

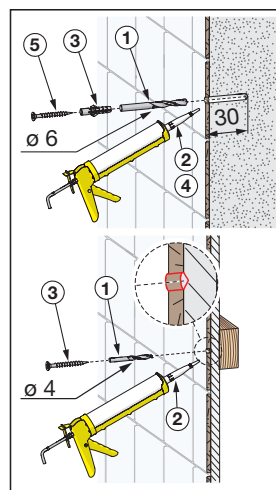
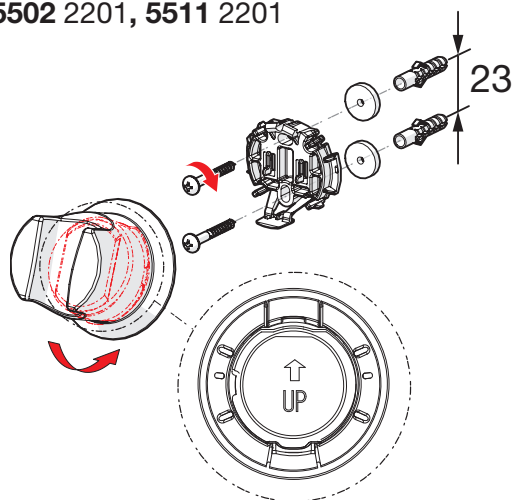
NO Montering
PL Instalacja
PT Instruções
RU Установка
SE Installation

SI Montaža
SK Inštalácia

5 5510 2281
 5511 2201



5502 2201, 5511 2201



Installation/Operation

CZ Montáž/Funkce

DE Montage/Funktion

DK Installation/Bedjening

ES Montaje/Servicio

FI Asennus/Toiminta

FR Installation/Utilisation

GR Εγκατάσταση/Λειτουργία

HU Szerelés/Üzemeltetés

IT Montaggio/Funzionamento

NL Installatie/Bediening

NO Montering/Funksjon

PL Instalacja/Działanie

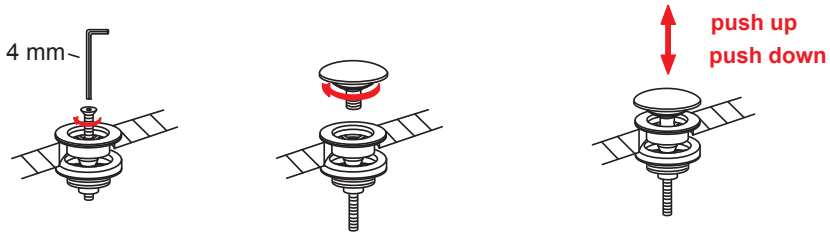
PT Instruções/funcionamento

RU Установка/Принцип действия

SE Installation/Funktion

SI Montaža/Delovanje

SK Inštalácia/Prevádzka



Rinsing

CZ Vypláchnutí

DE Spülen

DK Gennemskyldning

ES Aclarar

GR Έκπλυση

HU Öblítés

FI Huuhtelu

FR Rinçage

IT Spurgo

NL Spoelen

NO Rengjøring

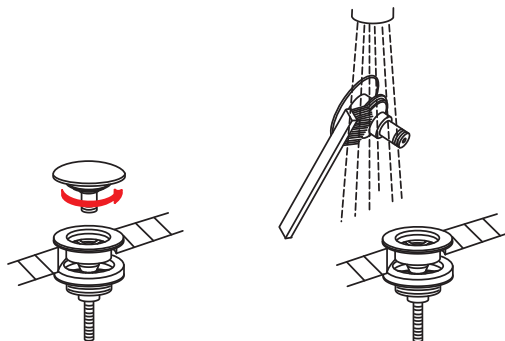
PL Płukania

PT Enxaguamento

RU Промывка

SE Renspolning

SK Vypláchnutie



Temperature adjustment

CZ Regulátor teploty

DE Temperatureinstellung

DK Justering af temperaturen på
installationsstedet

ES Ajuste de la temperatura en el lugar de montaje

FI Lämpötilan säätö tarvittaessa

FR Limitation de la température

GR Ρύθμιση θερμοκρασίας

HU Hőmérséklet beállítás

IT Regolazione della temperatura sul luogo del
montaggio

NL Temperatuursinstelling

NO Justering av temperaturen ved sperreknappens

PL Regulacja temperatury

PT Ajuste da temperatura

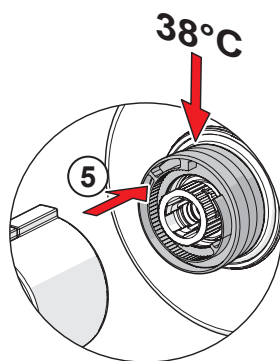
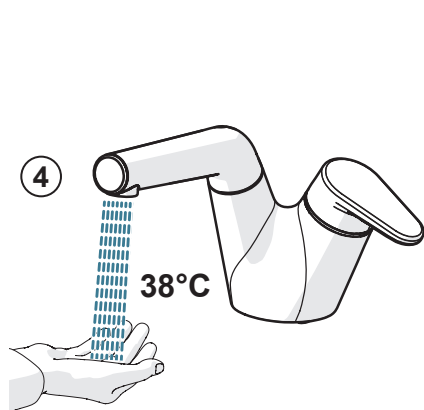
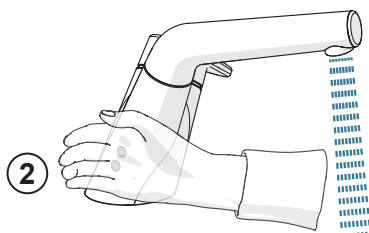
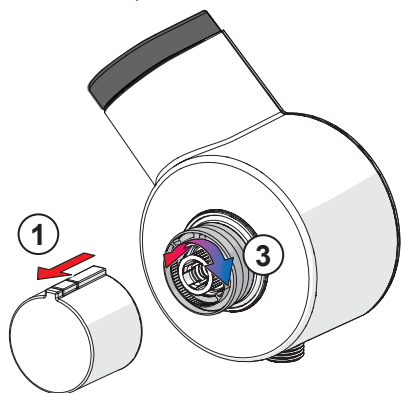
RU Регулировка температуры

SE Justering av blandningstemperatur

SI Nastavitev temperature

SK Nastavenie teploty

5510 2281, 5511 2201



Operation

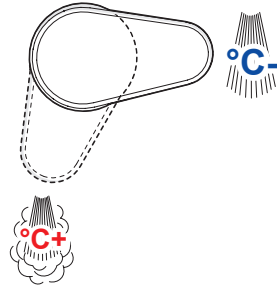
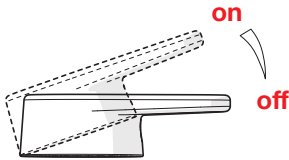
CZ Funkce
DE Funktion
DK Betjening
ES Servicio
FI Toiminta

FR Utilisation
GR Λειτουργία
HU Üzemeltetés
IT Funzionamento
NL Bediening

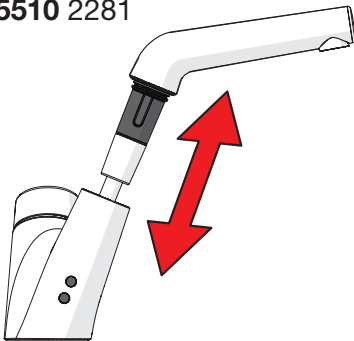
NO Funksjon
PL Działanie
PT Funcionamento
RU Принцип действия
SE Funktion

SI Delovanje
SK Prevádzka

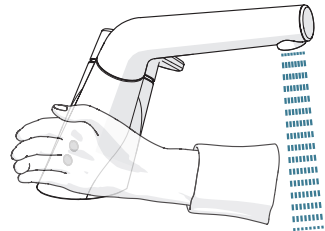
1



2 5510 2281

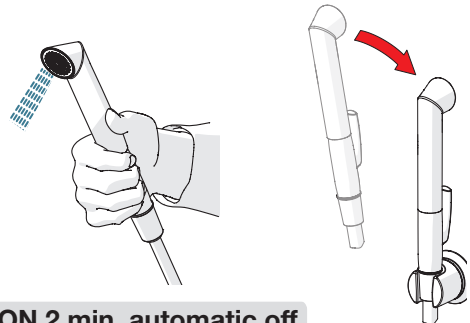
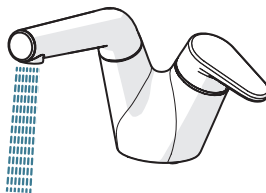
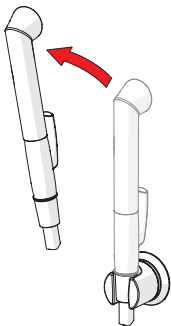


5510 2281
 5511 2201



ON 6 s

3 5511 2201



ON 2 min, automatic off

To change the spout's swing angle

CZ Výміна výtokového ramene

DE Den Schwenkbereich des Auslaufs ändern

DK Ændring af tudens svingradius

ES Variación del radio d'azione della bocca

FI Juoksuputken kääntymiskulman muuttaminen

FR Changement de la rotation du bec

GR Για αλλαγή της γωνίας στροφής του χείλους εκροής

HU A kifolyó hajlásszögének módosítása

IT Per modificare l'angolo di rotazione della bocca

NL Om de draaihoek van de uitloop te wijzigen

NO Begrensning av tudens svingutslag

PL W celu zmiany kąta obrotu wylewki

PT Para mudar o ângulo de rotação do bico

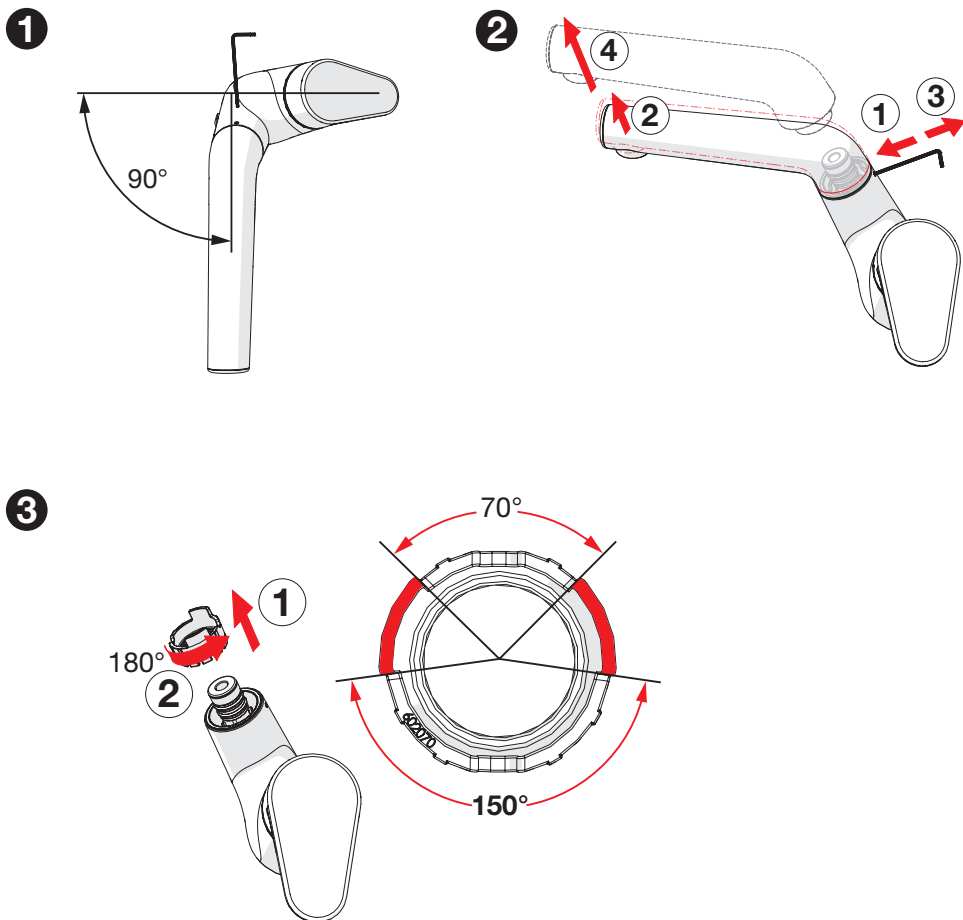
RU Изменение угла поворота излива

SE Ändring av utloppspipens svängradie

SI Modifikacija nihajnega kota izlivne cevi

SK Možnosť zmeny veľkosti úhlu otáčení výtokového ramene

5501 2201, 5502 2201, 5511 2201



To change the spout's swing angle

CZ Výміна výtokového ramene

DE Den Schwenkbereich des Auslaufs ändern

DK Ændring af tudens svingradius

ES Variación del radio d'azione della bocca

FI Juoksuputken kääntymiskulman muuttaminen

FR Changement de la rotation du bec

GR Για αλλαγή της γωνίας στροφής του χείλους εκροής

HU A kifolyó hajlásszögének módosítása

IT Per modificare l'angolo di rotazione della bocca

NL Om de draaihoek van de uitloop te wijzigen

NO Begrensning av tudens svingutslag

PL W celu zmiany kąta obrotu wylewki

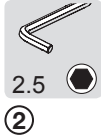
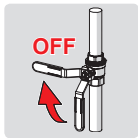
PT Para mudar o ângulo de rotação do bico

RU Изменение угла поворота излива

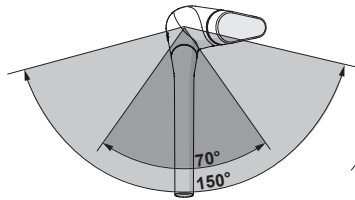
SE Ändring av utloppspipens svängradie

SI Modifikacija nihajnega kota izlivne cevi

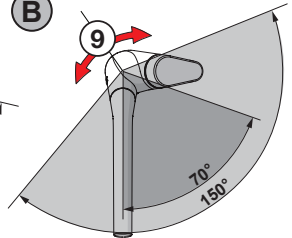
SK Možnosť zmeny veľkosti úhlu otáčení výtokového ramene



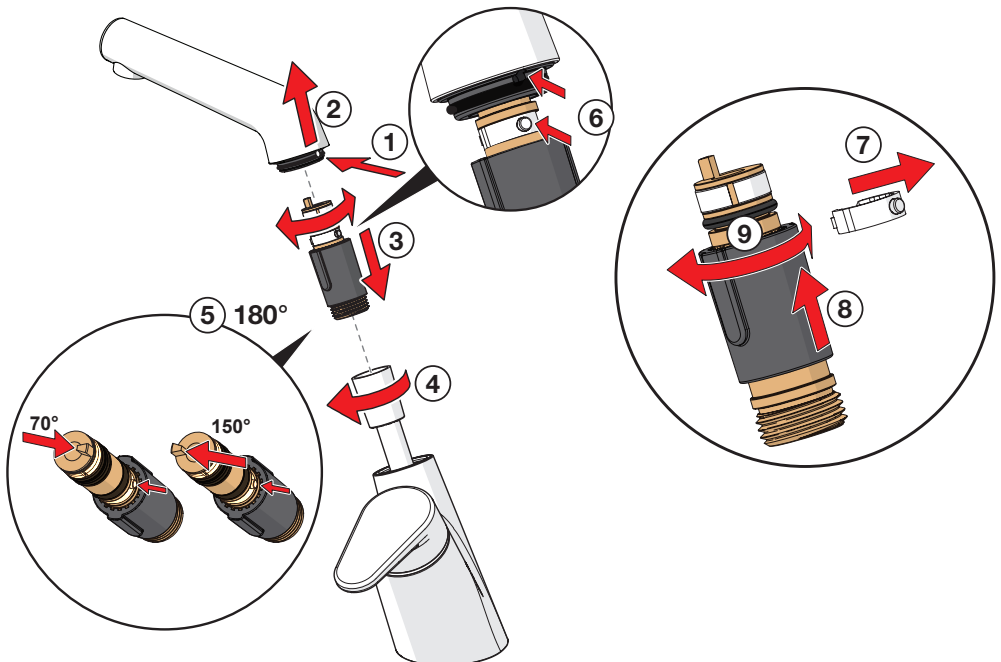
A 70° / 150°



B



5505 2281, 5510 2281



Changing the battery

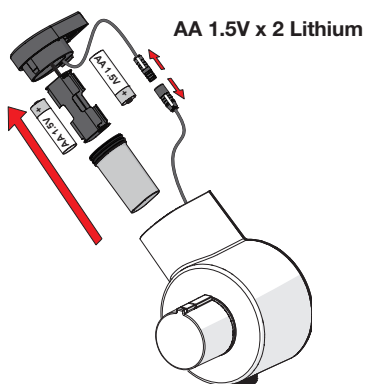
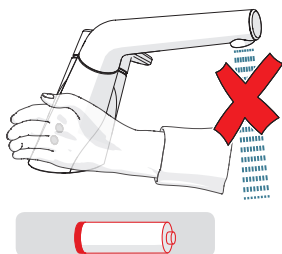
CZ Výměna baterie
DE Wechsel der Batterie
DK Udskiftning af batteri
ES Cambiar la batería
FI Pariston vaihto
FR Changement de la pile
GR Αλλαγή μπαταρίας
HU Az akku cseréje
IT Sostituzione della batteria

NL Batterij vervangen
NO Bytting av batteri
PL Wymiana baterii zasilającej
PT Substituir a bateria
RU Замена батарейки
SE Byte av batteri
SI Menjava baterije
SK Výmena batérie



5510 2281, 5511 2201

1

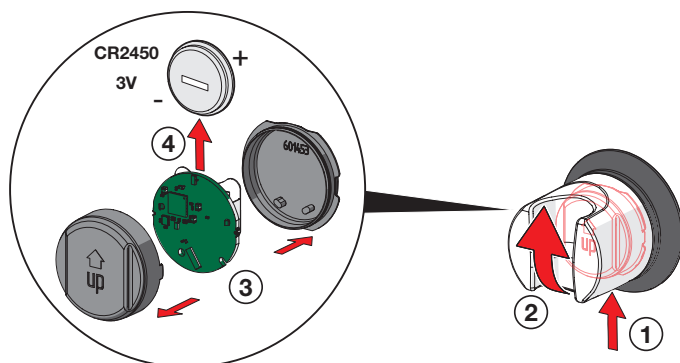


1 2

3

5511 2201

2



Cleaning/changing the litter filters

CZ Čištění/Výměna filtrů

DE Reinigung/Wechsel der Filter

DK Rensning/udskiftning af filtre

ES Limpieza/cambio de los filtros

FI Roskasiivilöiden puhdistaminen/vaihtaminen

FR Nettoyage/changement des filtres

GR Καθαρισμός/αλλαγή φίλτρων απορριμμάτων

HU A szűrő tisztítása/cseréje

IT Pulizia/sostituzione dei filtri

NL Reinigen/veranderen van de filters

NO Rensning/bytting av filter

PL Czyszczenie/wymiana filtra

PT Limpar/substituir os filtros de resíduos

RU Очистка и замена уплотнительных фильтро

SE Rengöring/byte av smutsfilter

SI Čiščenje/menjava odpadnega filtra

SK Čistenie/výmena odpadových filtrov



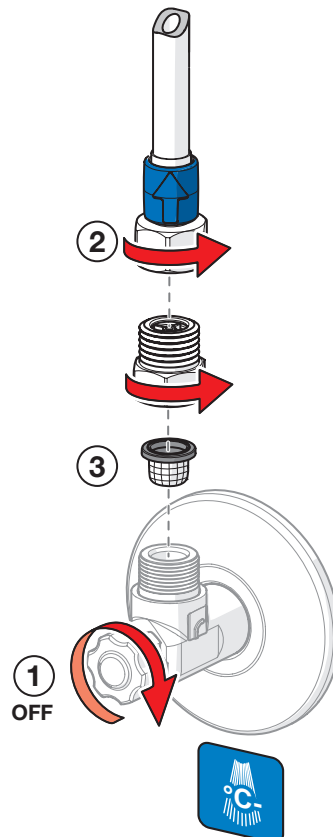
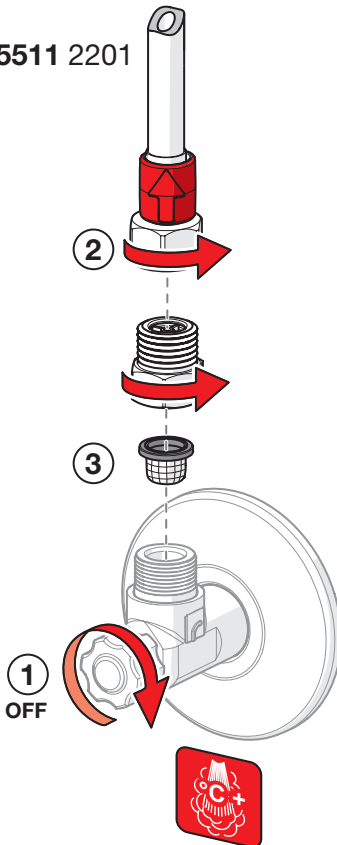
19



②

③

5510 2281, 5511 2201



To change the cartridge

CZ Výměna kartuše

DE Auswechseln der Patrone

DK Udskiftning af reguleringskassette (unit)

ES Montaje del cartucho

FI Säätöosan vaihto

FR Montage et démontage de la cartouche

GR Αντικατάσταση του στοιχείου

HU A patron cseréje

IT Montaggio della cartuccia

NL Vervangen van het keramische binnenwerk

NO Skifting av kassett

PL Wymiana modułu sterującego

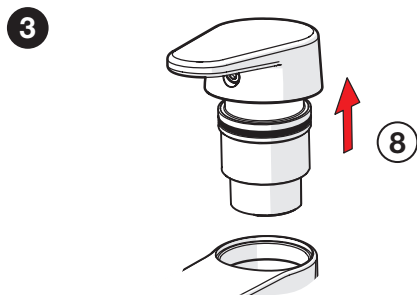
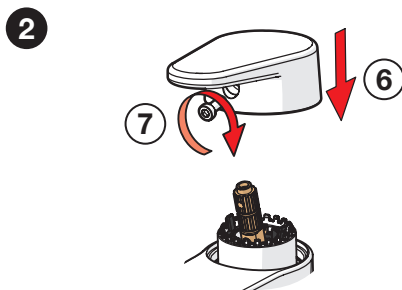
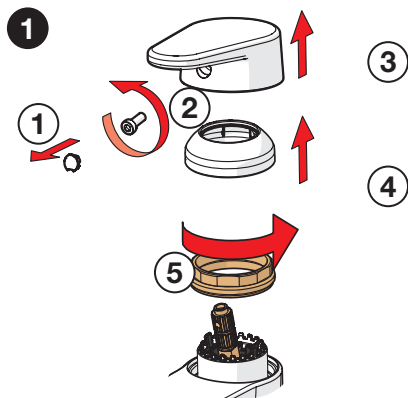
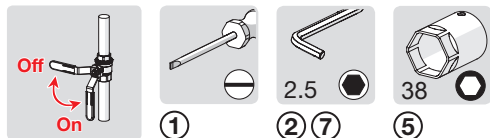
PT Substituição do cartucho

RU Замена регулировочного блока

SE Byte av kassett

SI Menjava kartuše

SK Výměna kartuše



To change the cartridge

CZ Výměna kartuše

DE Auswechseln der Patrone

DK Udsiftingning af reguleringskassette (unit)

ES Montaje del cartucho

FI Säätöosan vaihto

FR Montage et démontage de la cartouche

GR Αντικατάσταση του στοιχείου

HU A patron cseréje

IT Montaggio della cartuccia

NL Vervangen van het keramische binnenwerk

NO Skifting av kassett

PL Wymiana modułu sterującego

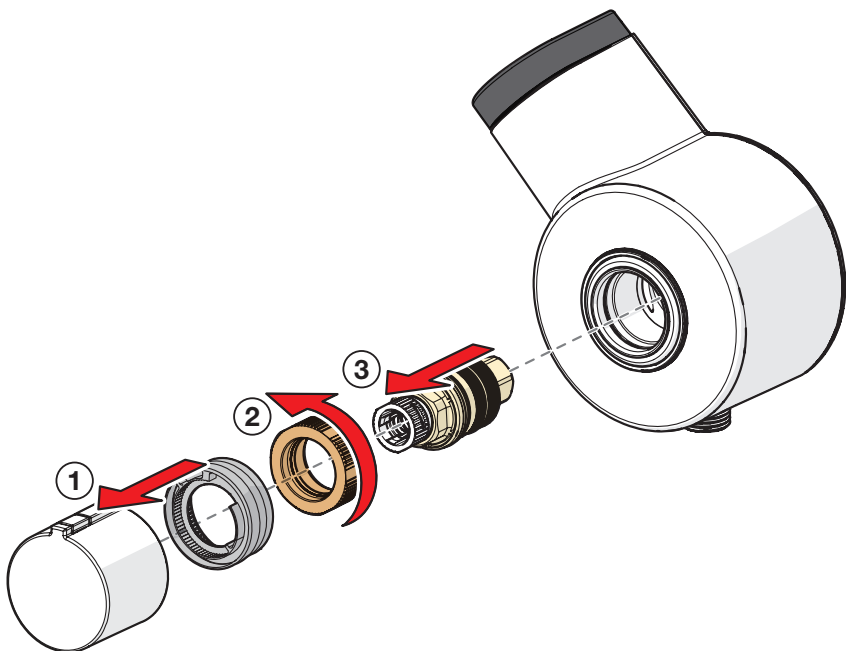
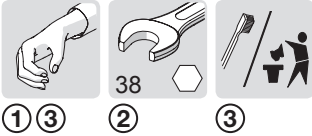
PT Substituição do cartucho

RU Замена регулировочного блока

SE Byte av kassett

SI Menjava kartuše

SK Výměna kartuše



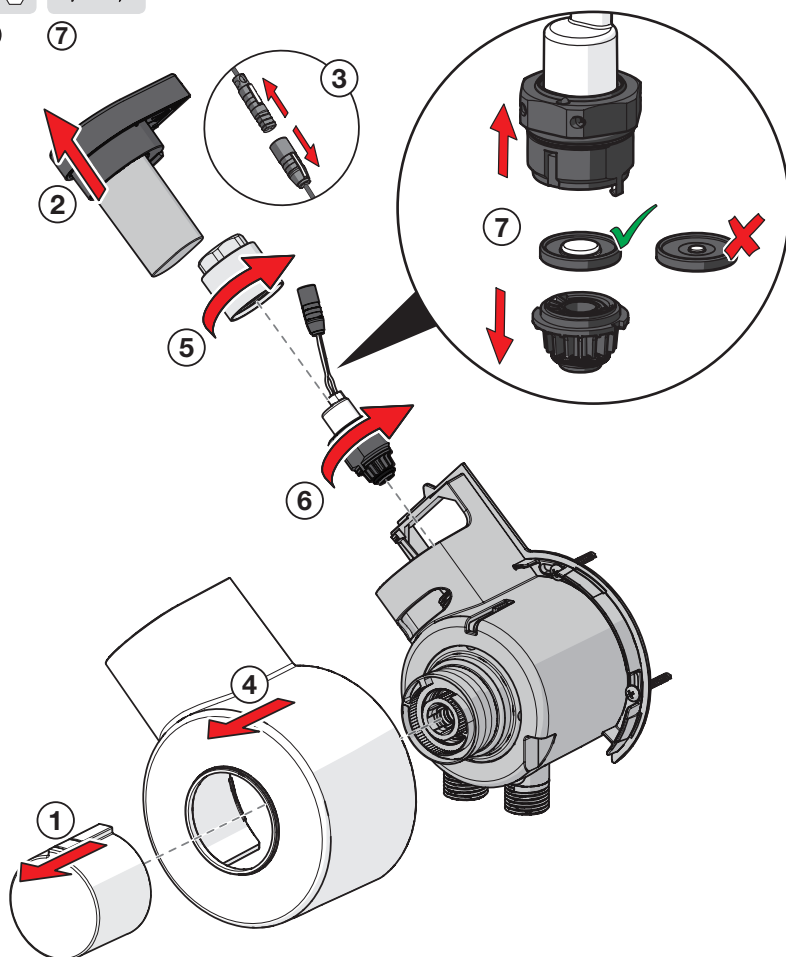
Servicing the solenoid valve

CZ Servis solenoidového ventilu
DE Wartung des Magnetventils
DK Rensning/udskiftning af magnetventilens
ES Cambiar la válvula magnética
FI Magneettiventtiilin vaihto
FR Changement de l'électrovanne
GR Σέρβις ηλεκτρομαγνητικής βαλβίδας
HU A mágnesszelep szervizelése
IT Sostituzione della valvola magnetica

NL Vervanging van de magneetventiel
NO Bytting av magnetventil
PL Wymiana zaworu solenoidowego
PT Assistência para a válvula solenoide
RU Замена электромагнитного клапана
SE Byte av magnetventil
SI Vzdrževanje elektromagnetnega ventila
SK Výmena elektromagnetického ventilu



① ② ④ ⑤ ⑥ ⑦



Changing the sensor

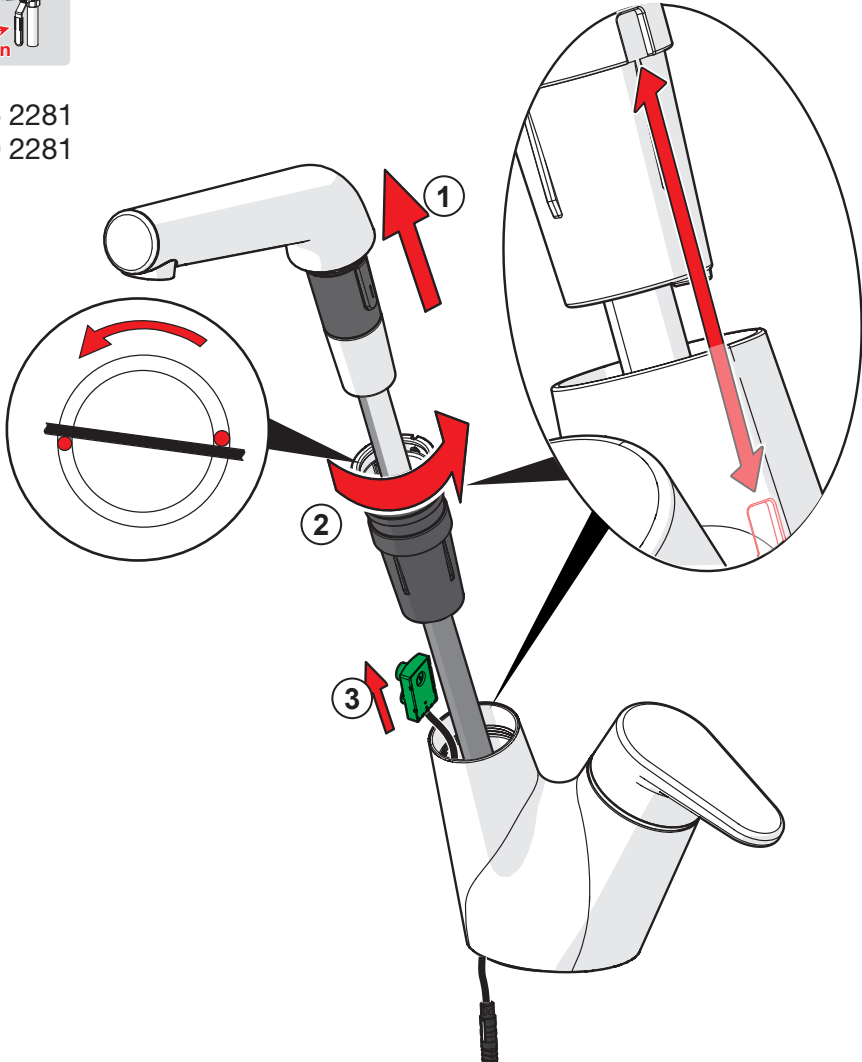
CZ Výměna elektroniky/senzoru
DE Austausch des Sensors
DK Udskiftning af sensoren
ES Cambiar el sensor
FI Sensorin vaihto
FR Changement de la cellule

GR Αλλαγή αισθητήρα
HU Az érzékelő cseréje
IT Sostituzione del sensore
NL Vervangen van de sensor
NO Bytting av sensor
PL Wymiana sensora

PT Substituir o sensor
RU Замена датчика, модели
SE Byte av sensor
SI Menjava senzorja
SK Výměna senzora



5505 2281
5510 2281



Changing the factory settings

CZ Změna hodnot předem nastavených výrobce

DE Änderung der Werkseinstellungen

DK Ændring af fabriksindstillinger

ES Cambio de los ajustes de fábrica

FI Tehdasasetusten muuttaminen

FR Changement du réglage d'usine

GR Αλλαγή εργοστασιακών ρυθμίσεων

HU A gyári beállítások módosítása

IT Modifiche delle regolazioni di fabbrica

NL Wijziging factory settings

NO Forandring av fabrikkens forhåndsinnstillinger

PL Zmiana nastaw fabrycznych

PT Mudar nas definições de fábrica

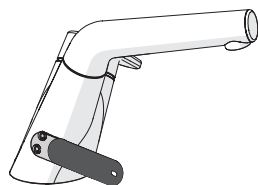
RU Изменение заводских значений

SE Justering av fabriksinställda styrparametrar

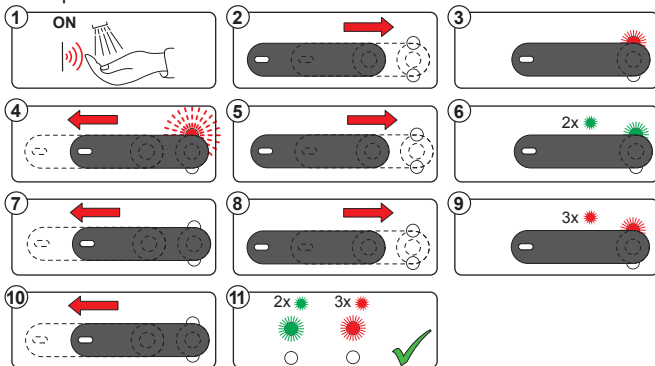
SI Zamenjava tovarniških nastavitve

SK Zmena továrenských nastavení

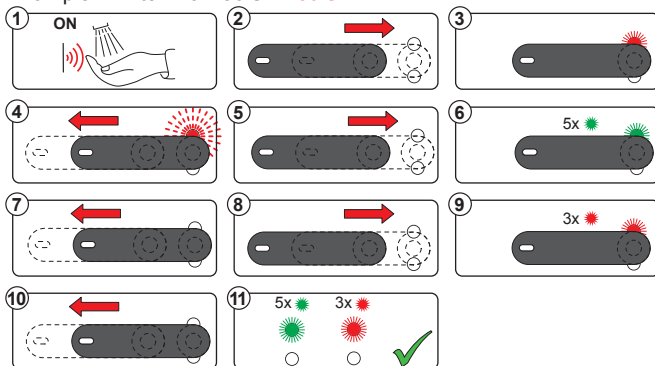
Factory default		1 x	2 x	3 x	4 x	5 x	6 x	7 x	8 x
Factory settings	1 x	-	-	-	-	-	-	-	-
Flow period (sec)	2 x	4	6	8	10	20	60	6	6
Automatic flush (h)	3 x	0	12	24	48	72	0	0	0
Automatic flush (sec)	4 x	10	30	60	120	180	240	300	600
Cleaning mode (sec)	5 x	15	30	60	15	15	15	15	15



Example 1: After Flow **6 s** → **8 s**



Example 1: After Flow **30 s** → **60 s**



Cleaning the faucet

CZ Čištění baterie

DE Reinigung der Armatur

DK Rengøring af armaturet

ES Limpieza de la grifería

FI Puhdistus

FR Nettoyage du robinet

GR Καθαρισμός του βρύση

HU Takarítás a csapot

IT Pulizia della rubinetteria

NL Reinigen van de kraan

NO Rengjøring av kranen

PL Czyszczenie baterii

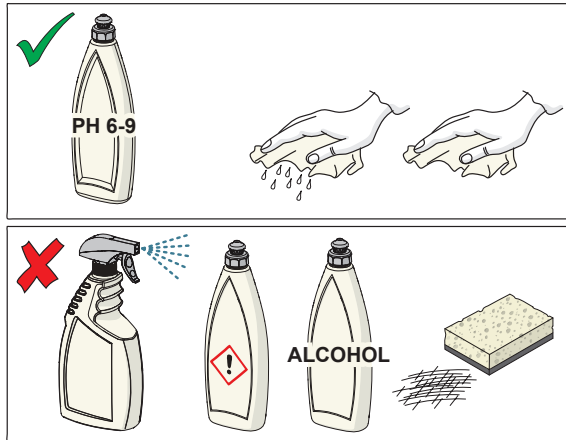
PT Limpeza da torneira

RU Чистка смесителя

SE Rengöring av blandarna

SI Čiščenje armature

SK Čistenie vodovodnej batérie



Cleaning mode

CZ Režim úklid

DE Reinigungsmodus

DK Rengøringsfunktion

ES Modo limpieza

FI Siivoustila

FR Mode de nettoyage

GR Τρόπος λειτουργίας
καθαρισμού

HU Tisztítási mód

IT Modalità di pulizia

NL Reinigings modus

NO Rensemodus

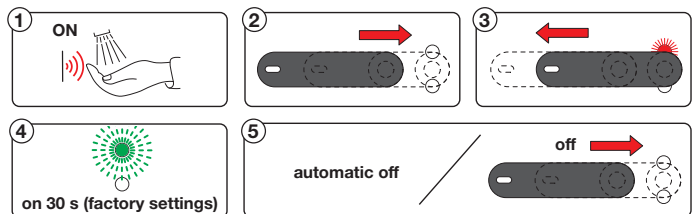
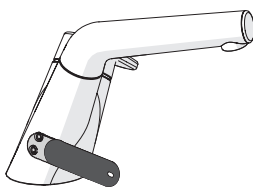
PL Tryb czyszczenia

PT Modo de limpeza

RU Режим очистки

SE Rengöringsläge

SK Režim upratovanie

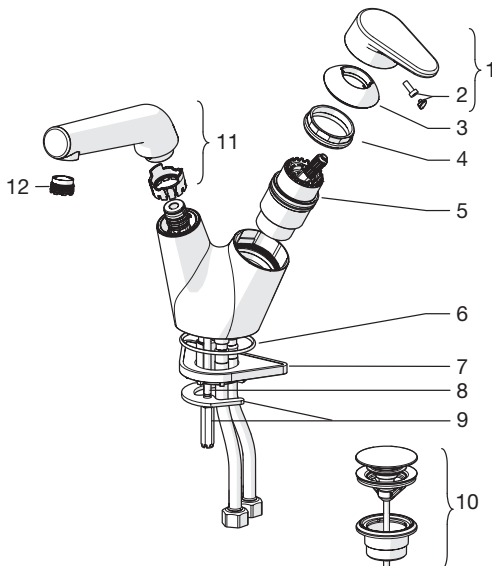


Spare parts

CZ Náhradní díly	FI Varaosat	NL Reserve-onderdelen	RU Запасные части
DE Ersatzteile	FR Pièces détachées	NO Reservedeler	SE Reservdelar
DK Reservedele	HU Alkatrészek	PL Części zamienne	SI Rezervni deli
ES Piezas de recambio	IT Pezzi di ricambio	PT Peças de reposição	SK Náhradné diely

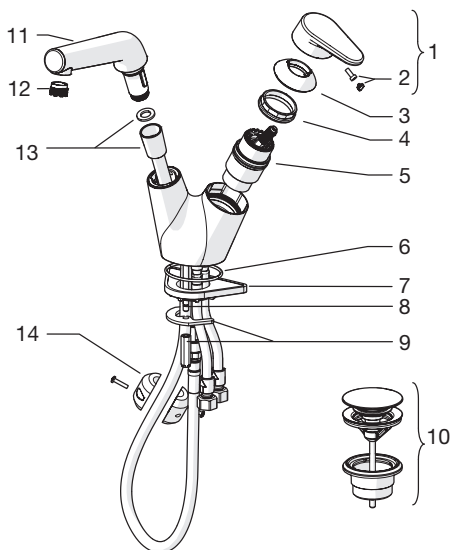
5501 2201, 5502 2201

- 1 59 914 340
- 2 59 914 341
- 3 59 914 342
- 4 59 914 128
- 5 59 914 129
- 6 59 914 369
- 7 59 910 008
- 8 59 914 259
- 9 59 914 344
- 10 59 913 988
- 11 59 914 343
- 12 59 914 350



5505 2281

- 1 59 914 340
- 2 59 914 341
- 3 59 914 342
- 4 59 914 128
- 5 59 914 129
- 6 59 914 369
- 7 59 910 008
- 8 59 914 259
- 9 59 914 344
- 10 59 913 988
- 11 59 914 711
- 12 59 914 350
- 13 59 914 345
- 14 59 914 039

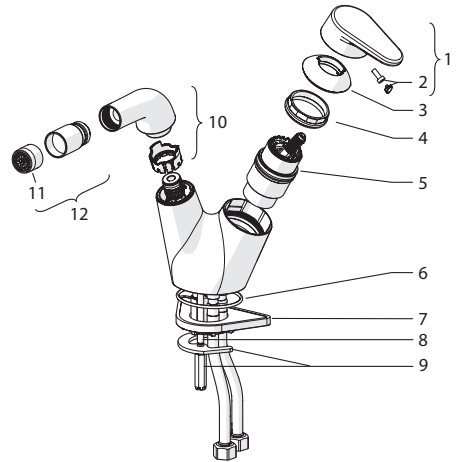


Spare parts

CZ Náhradní díly	FI Varaosat	NL Reserve-onderdelen	RU Запасные части
DE Ersatzteile	FR Pièces détachées	NO Reservedeler	SE Reservdelar
DK Reservedele	HU Alkatrészek	PL Części zamienne	SI Rezervni deli
ES Piezas de recambio	IT Pezzi di ricambio	PT Peças de reposição	SK Náhradné diely

5508 3203

1	59 914 340
2	59 914 341
3	59 914 342
4	59 914 128
5	59 914 129
6	59 914 369
7	59 910 008
8	59 914 259
9	59 914 344
10	59 914 523
11	59 914 443
12	59 914 524

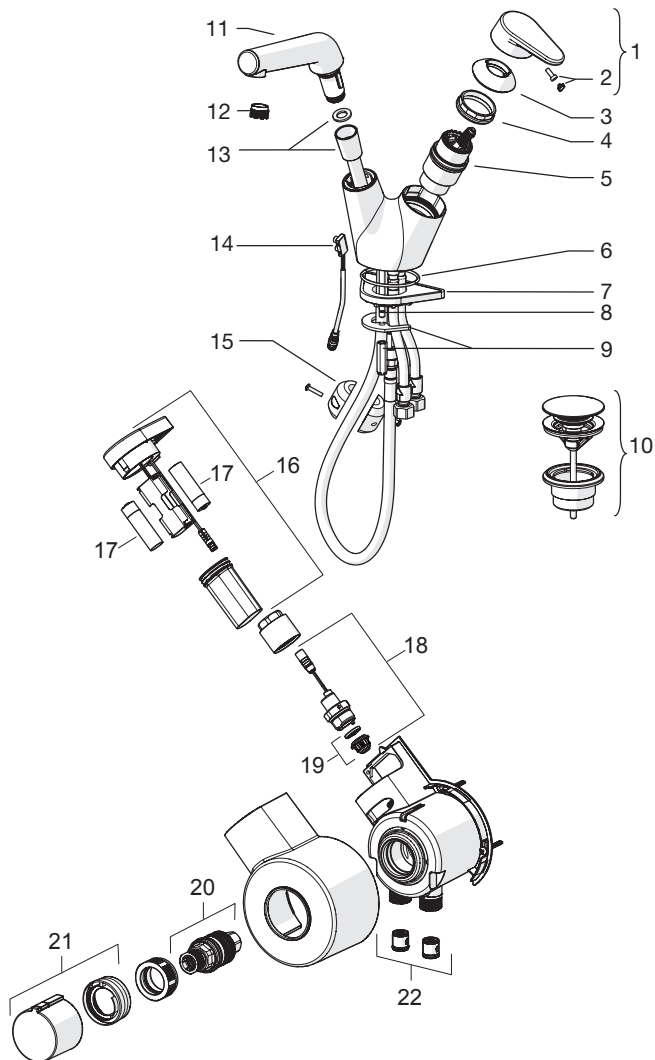


Spare parts

CZ Náhradní díly	FI Varaosat	NL Reserve-onderdelen	RU Запасные части
DE Ersatzteile	FR Pièces détachées	NO Reservedeler	SE Reservdelar
DK Reservedele	HU Alkatrészek	PL Części zamienne	SI Rezervni deli
ES Piezas de recambio	IT Pezzi di ricambio	PT Peças de reposição	SK Náhradné diely

5510 2281

- 1 59 914 340
- 2 59 914 341
- 3 59 914 342
- 4 59 914 128
- 5 59 914 129
- 6 59 914 369
- 7 59 910 008
- 8 59 914 259
- 9 59 914 344
- 10 59 913 988
- 11 59 914 711
- 12 59 914 350
- 13 59 914 345
- 14 59 914 347
- 15 59 914 039
- 16 59 914 623
- 17 59 914 136
- 18 59 914 125
- 19 59 914 126
- 20 59 914 114
- 21 59 914 134
- 22 59 914 250

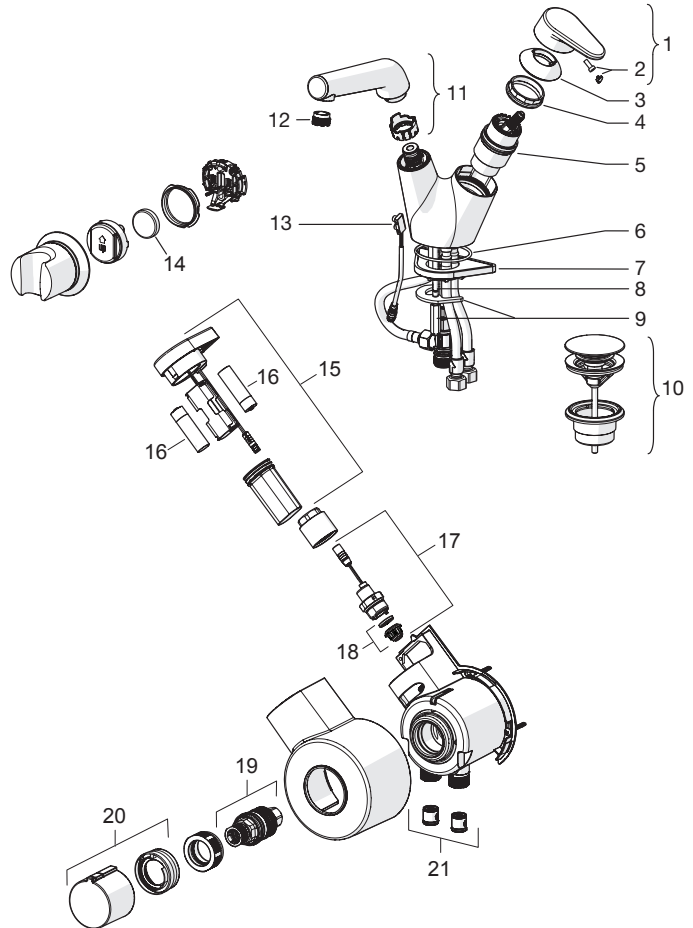


Spare parts

CZ Náhradní díly	FI Varaosat	NL Reserve-onderdelen	RU Запасные части
DE Ersatzteile	FR Pièces détachées	NO Reservedeler	SE Reservdelar
DK Reservedele	HU Alkatrészek	PL Części zamienne	SI Rezervni deli
ES Piezas de recambio	IT Pezzi di ricambio	PT Peças de reposição	SK Náhradné diely

5511 2201

- 1 59 914 340
- 2 59 914 341
- 3 59 914 342
- 4 59 914 128
- 5 59 914 129
- 6 59 914 369
- 7 59 910 008
- 8 59 914 259
- 9 59 914 344
- 10 59 913 988
- 11 59 914 343
- 12 59 914 350
- 13 59 914 347
- 14 59 914 137
- 15 59 914 623
- 16 59 914 136
- 17 59 914 125
- 18 59 914 126
- 19 59 914 114
- 20 59 914 134
- 21 59 914 250



Oras Group is a powerful European provider of sanitary fittings: the market leader in the Nordics and a leading company in Continental Europe. The company's mission is to make the use of water easy and sustainable and its vision is to become the European leader of advanced sanitary fittings. Oras Group has two strong brands, Oras and Hansa.

The head office of the Group is located in Rauma, Finland, and the Group has four manufacturing sites: Burglengenfeld (Germany), Kralovice (Czech Republic), Olesno (Poland) and Rauma (Finland). Oras Group employs approximately 1400 people in twenty countries. Oras Group is owned by Oras Invest, a family company and an industrial owner.

HANSA Armaturen GmbH
P. O. BOX 81 02 40
D-70519 Stuttgart

Sigmaringer Strasse 107
D-70567 Stuttgart
Tel.: +49 711 16 14 0
Fax: +49 711 16 14 368
info@hansa.de

www.hansa.com



a member of  orasgroup