

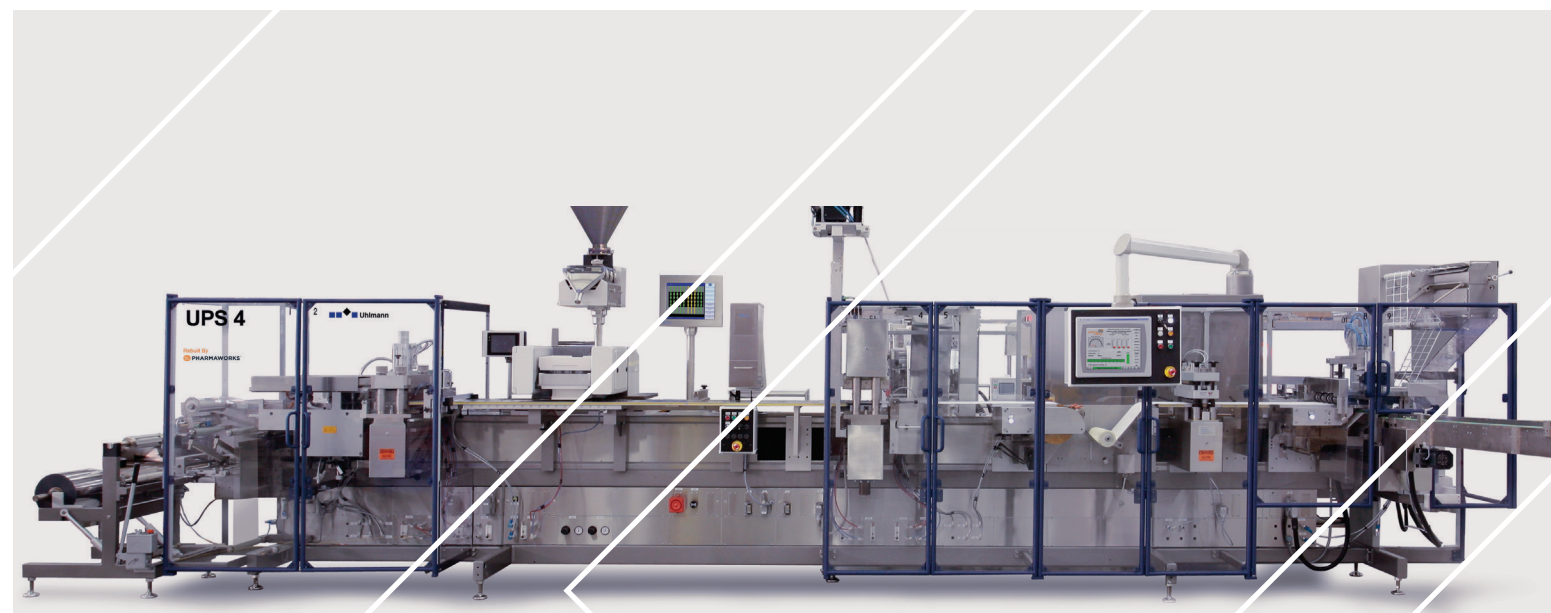


**PROMACH**

**PHARMAWORKS**

Pharmaworks manufactures innovative blister packaging systems for the pharmaceutical, consumer goods, and contract packaging industries. With a robust and flexible lineup of thermoforming solutions that spans from stand-alone machines to turnkey blister packaging lines, Pharmaworks can handle nearly any customer challenge with unmatched precision to meet even the most stringent requirements. Pharmaworks is a product brand of ProMach, a global leader in packaging line solutions. As part of the ProMach Pharma business line, Pharmaworks helps our customers protect their reputation and grow the trust of their consumers. ProMach is performance, and the proof is in every package. Learn more about Pharmaworks at [www.Pharmaworks.com](http://www.Pharmaworks.com) and more about ProMach at [www.ProMachBuilt.com](http://www.ProMachBuilt.com).

**PHARMAWORKS**



# BLISTER MACHINE REBUILDS

Uncompromising quality that sets the standard for blister machine rebuilding.

USA  
2346 Success Drive  
Odessa, FL, 33556  
P: 727-232-8200  
F: 727-232-8196

E: [Sales@Pharmaworks.com](mailto:Sales@Pharmaworks.com)  
[Pharmaworks.com](http://Pharmaworks.com)

PH  
PHARMA

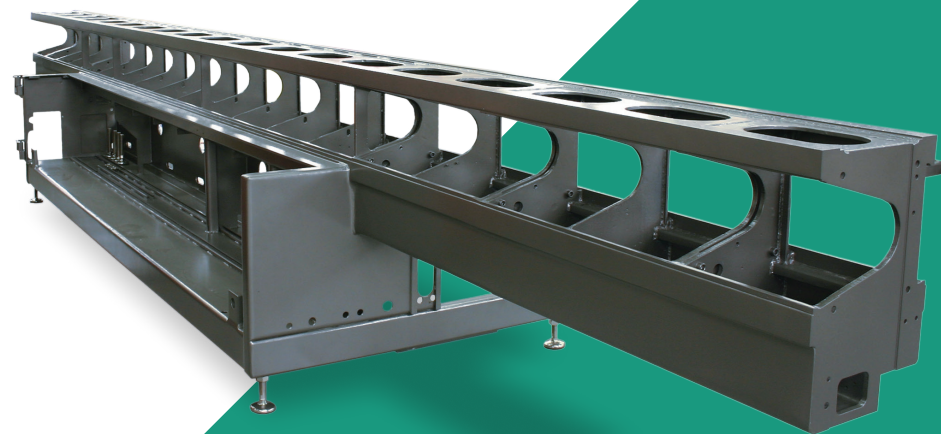
# CHOOSE TO REBUILD CHOOSE PHARMAWORKS

Before the current trend to rebuild machines became widely accepted, Pharmaworks was setting the standard for other OEMs to follow.

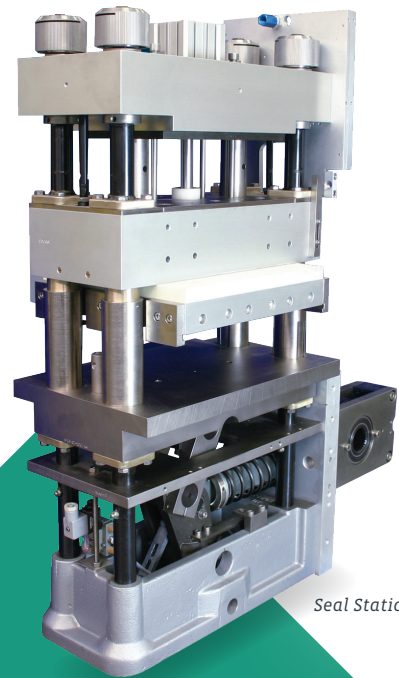
**A rebuilt blister packaging machine that is upgraded to modern standards has the following benefits:**

- Existing tooling can be reused or shared
- Cost effective alternative to purchasing from overseas OEMs
- Reduced environmental impact
- Reutilize existing spare parts investment
- Minimized training and support costs

Many customers have existing machines that can be rebuilt and put back into production. Alternatively, for customers who cannot afford to have an existing machine out of service, Pharmaworks holds an inventory of machines ready to be tailored to your exact needs. Many customers take advantage of our machine exchange program, allowing their machines to be replicated and swapped out, effectively minimizing downtime.



Completely refurbished machine frame



Seal Station

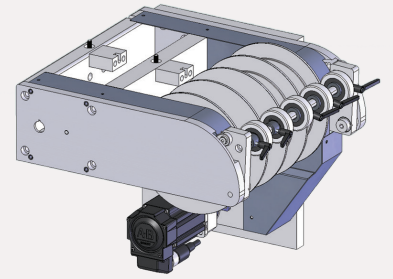


UPS 300

There are many reasons why Pharmaworks is the leader in blister machine rebuilding. It starts with our experienced staff. We are passionate about providing our customers a superior blister packaging machine/line. Our uncompromising quality standards insure that your machine will exceed your expectations.



UPS 4ET



## ENGINEERED ENHANCEMENTS:

Servo-Driven indexer

**A rebuild from Pharmaworks has the following benefits:**

- USA service and support
- We maintain an inventory of machines
- New controls system (PLC, HMI)
- Servo indexing replacing mechanical indexers
- Full one year warranty
- We listen to the customer needs
- Engineered solutions exceed the original machines capabilities
- Seal pressure monitoring
- Heater plate upgrades
- High speed reject systems
- Positive reject verification
- Servo-driven main drives

**NEW!** Ask about our hybrid UPS 4M/ET allowing usage of both ET and MT tooling on the same machine.



# THE COMPLETE REBUILD

Pharmaworks takes great pride in providing an affordable machine that exceeds the original performance standards. Take a look at the quality of our upgrades...

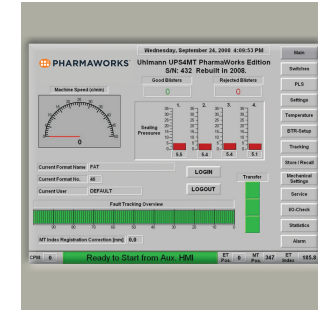
We have successfully rebuilt or upgraded the following models:

UPS 1.1, UPS 2, UPS 3/4 ET & MT, UPS 300, UPS 1020, UPS 1040, CP 2, CP 3, CP 8, CP 10, CP 11, and EAS



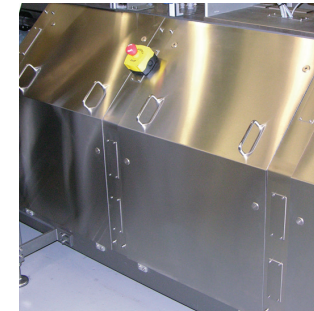
## IMPROVED HEATER PLATES

We have developed a drop in replacement for existing heater plates. Our split plate design reduces maintenance costs by allowing a heater element to be quickly exchanged rather than the entire plate.



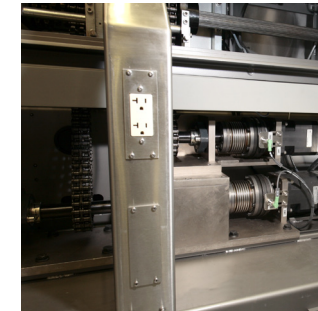
## CONTROLS/HMI

Each rebuild gets a new control system based on the Allen Bradley PLC. The system has integrated servo motion control and uses Ethernet connectivity to other devices with CFR Part 11 compliancy available.



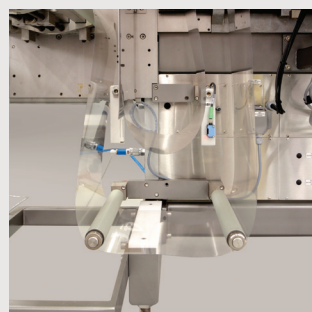
## cGMP

Enhanced cGMP design on all rebuilt blister packaging machines.



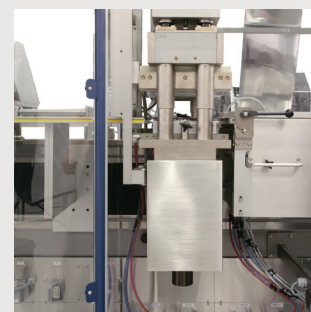
## SERVO MAIN DRIVE

Our servo drive upgrade allows smoother cam generation and allows the servo-driven indexers to follow the main drive. Servo drives also allow electronic ratio changes. This eliminates the need for mechanical changeover.



## IMPROVED MATERIAL HANDLING

We replace the base material pendulum with an electronically controlled material loop. This reduces material drag and shrinkage which improves performance.



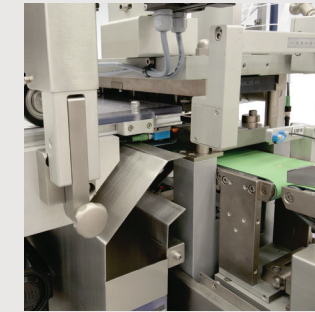
## SEAL PRESSURE MONITORING UPGRADE

The seal pressure monitoring upgrade allows the seal pressure to be monitored each cycle. This allows package rejection and/or machine stop.



## INDEXING CONVERTED TO SERVO CONTROL

We can replace the existing mechanical indexer with our servo-driven indexer. This allows index changes and storage from the HMI. Automated print registration is integrated allowing corrections each cycle.



## DIE CUT INDEXER WITH LASER FEEDBACK

For machines with a compensation loop and second indexer, we have developed a laser feedback system. The servo-driven indexer allows blisters to be accurately indexed into the die cut station each cycle.



# LINE INTEGRATION

## Complete blister packaging integrations.

Pharmaworks offers turn-key blister line integration services including FAT for a complete line, as well as documentation and services.



UPS 300

C 100

Pharmaworks can supply blister machines and integrate a variety of subsystems such as:

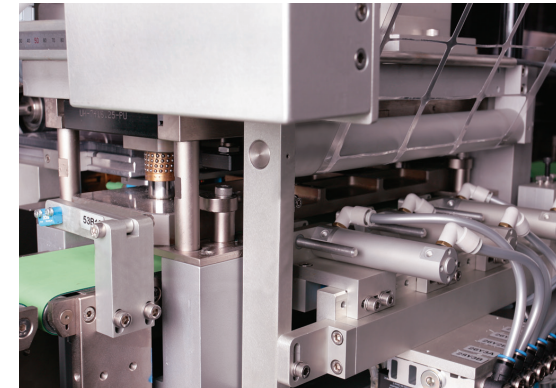
- Tooling
- Feeders
- Vision systems
- Printers
- Transfer systems
- EOL (cartoners, check weighers, case packers and palletizers)



UPS 4MT with cartoner

# FIELD UPGRADES

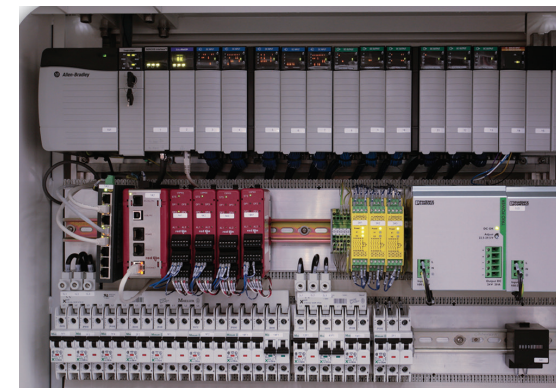
When a full machine rebuild is not required or is not practical, Pharmaworks offers field upgrades.



High speed rejection system with positive verification



UPS 300 servo upgrade



Allen Bradley control system

Pharmaworks can install a new control system in the field. We can also replace certain stations on the machine to increase functionality and improve performance.

**A typical field upgrade may consist of the following options:**

- New control system with new HMI
- Servo-driven indexing in replacement of mechanical indexers
- Servo-driven main drive systems to replace existing drive systems
- Seal station pressure monitoring added to machine
- Complete cooling and pneumatic system replacement
- Replace existing heater plates with the Pharmaworks style heater plates