



FT320

DEDICATED TUBE STYLE FEEDER

PH

PHARMA

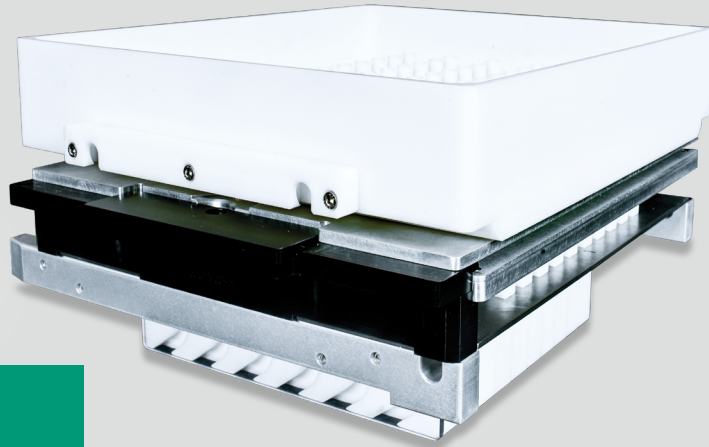
> Satisfying today's production line demands

The FT320 is a tube style dedicated feed system. The system has been designed and engineered to run a wide variety of products. This state-of-the-art system offers increased control of product agitation and overall ease of use. Operators can make all adjustments to the system while running.

FEATURES AND BENEFITS

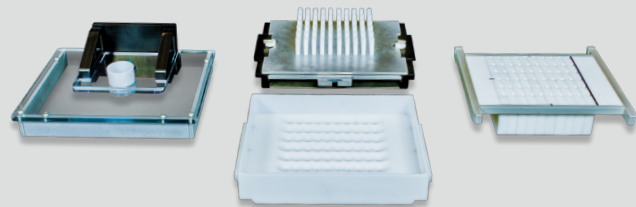
- Compact cGMP design
- Mounting (on mobile cart or directly to blister machine)
- Coarse product agitation with upper and lower stroke adjustment
- Motor controlled fine agitation of product
- Product drop height adjustable (while running)
- Positioning to blister web adjustable (while running)
- Simplified product escapement system
- Used with the Pharmaworks TF1, TF1e, TF1pro, TF2, and TF3 machines
- Can be used with any other brand/models of blister machine

FT320 TOOLING



SPECIFICATIONS

Max. feed area width (across machine)	300 mm
Max. feed area length (index direction)	320 mm



BV4

The BV4 is the preferred Bulk Vibratory System for medium to large feeding applications. The unit can be changed over without the use of tools. It can be mounted to a mobile cart so that it can be used with multiple different feeding systems or it can be mounted directly to a feeder system platform.

FEATURES AND BENEFITS

- cGMP design
- 316 SS hopper with viewing window
- Quick change sieve plate
- Compact design for smaller feeder systems
- Used with TF1pro, TF2, TF3, and any other small to medium format blister machines including UPS4 blister machines



©2020 ProMach Inc. ProMach reserves the right to change or discontinue specifications and designs shown in this brochure without notice or recourse PM-PW-SS003_FT320_1220