

From the editor's desk

Dear Readers,

As we present the 12th edition of The Impact Catalyst, we welcome a festive season marked by Bihu, Vaisakhi, Vishu, and the Tamil New Year, each symbolizing renewal, progress, and new beginnings.

This issue brings together diverse perspectives through our featured blogs—"From Triangle to Hexagon: Reframing Healthcare Delivery", exploring Kenya's journey towards Universal Health Coverage, and "Interior Designing of Hospital Rooms", focusing on the role of infrastructure in enhancing patient experience.

We also share key updates across our verticals, highlighting recent achievements and ongoing initiatives that reflect our continued commitment to strengthening healthcare systems through quality, innovation, and capacity building.

Wishing all our readers a prosperous and fulfilling festive season.

Warm regards,
Editor

QUARTER HIGHLIGHTS



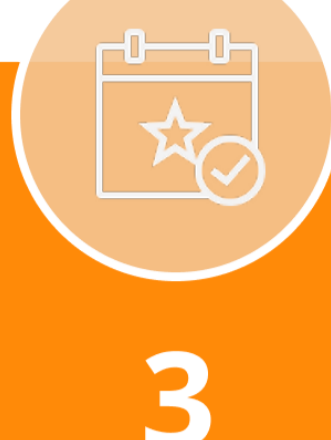
21

NEW PROJECTS



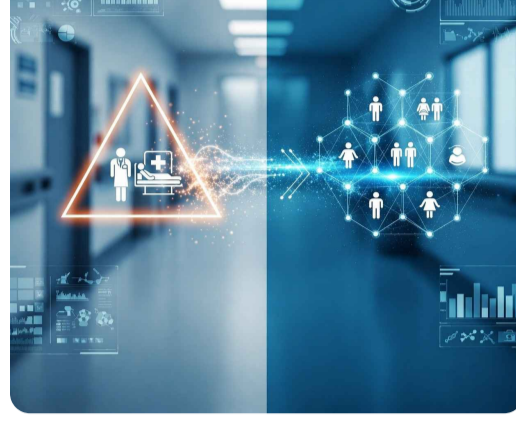
300

TRAINING PARTICIPANTS



3

EVENT CONTRIBUTIONS



From Triangle to Hexagon: Reframing Healthcare Delivery

By Dr Judith Getugi

To understand where Kenya stands today in its pursuit of Universal Health Coverage (UHC), it helps to stand outside the system — as an observer looking in — and trace the distance travelled over two decades. Nowhere does that distance feel more tangible than in Lamu County.

[Read More](#)



Interior Design of Hospital Rooms: Safety, Comfort & Clinical Efficiency

By Ar Sandeep K Jose

Hospital architecture is no longer limited to sterile white rooms and purely functional spaces. Today, the design of patient rooms plays a critical role in supporting recovery, enhancing clinical workflow, and ensuring patient safety.

[Read More](#)

VERTICAL HIGHLIGHTS

INFRASTRUCTURE & DESIGN CONSULTANCY



Bhattadev University, Bajali (Assam)

Integra Ventures contributed to developing a future-ready academic ecosystem at Bhattadev University, Bajali, under the leadership of Ar. Juhaid Ahsan Choudhury. The team delivered end-to-end Architectural, Structural, and MEP consultancy services for the 100,300 sq. ft. campus, ensuring functionality, sustainability, and modern design standards.

The university was inaugurated by the Hon'ble Chief Minister of Assam, Dr. Himanta Biswa Sarma, marking a significant milestone in strengthening higher education infrastructure in the region.

Hamsaraga Hospital, Bengaluru (Karnataka)

Integra Ventures successfully delivered Architectural Consultancy services for a 150-bedded healthcare facility at Hamsaraga Hospital, Bengaluru, spanning 56,000 sq. ft. Led by Ar. Swetha SB and Ar. Sandeep Jose, the project reflects a thoughtful integration of efficient space planning, patient-centric design, and functional excellence.



HOSPITAL MANAGEMENT CONSULTANCY



GD Hospital and Diabetes Institute, Kolkata (West Bengal)

Integra Ventures supported the hospital in its journey towards National Accreditation Board for Hospitals & Healthcare Providers (NABH) Accreditation, providing structured guidance on quality and patient safety standards. The engagement was led by Ms. Upasana Baral (Associate Consultant), with support from Mr. Arpan Gope (Associate Consultant).

Crystal Diagnostic and Research Centre, Jorhat (Assam)

Integra Ventures provided consultancy support to the centre in its pursuit of National Accreditation Board for Testing and Calibration Laboratories (NABL) Accreditation. Led by Mr. Partha Pratim Goswami (Consultant), the engagement focused on strengthening laboratory quality systems, ensuring compliance, and improving operational accuracy.



TRAINING & ACADEMICS



The Eyecare Center, Guwahati (Assam)

A two-day interactive training programme on "Service to Experience: Elevating Patient Care Standards" was conducted for the Front Office team at The Eyecare Center. Led by Dr. Lipika Sarmah, Head - Training & Academics, the programme focused on communication, patient engagement, and service excellence.

Ramakrishna Mission Hospital, Itanagar (Arunachal Pradesh)

A four-day comprehensive training programme was delivered at Ramakrishna Mission Hospital for both clinical and non-clinical staff, focusing on Basic Life Support (BLS), service quality, and patient engagement.

The programme was led by Dr. Geethar Gogoi, Consultant - Critical Care, Coras Pratiksha Hospital; Dr. Daipayan Bhowmick, Consultant & In-charge ICU, Metro Hospital; Dr. Lipika Sarmah; and Mr. Partha Pratim Goswami from Integra Ventures, with an emphasis on hands-on training and strengthening patient-centric care practices.



PUBLIC HEALTH STRENGTHENING



Impact Evaluation - Mobile Medical Unit (MMU), SBI Sanjeevani - Clinic on Wheels (Punjab)

Integra Ventures conducted a mixed-method impact evaluation for the MMU initiative across rural Punjab, assessing healthcare access, service utilization, and treatment adherence among underserved populations.

Combining quantitative analysis with qualitative insights, the study identified key gaps and opportunities to strengthen outreach, continuity of care, and overall programme effectiveness.

Baseline Survey on Food, Nutrition, Health and WASH (FNHW), Tripura

A comprehensive baseline assessment was undertaken by our public health experts, Dr. Bhartendu Sharma, Dr. Retisha Sharma and Ms. Komal Porwal to evaluate maternal and child health, nutrition status, and WASH practices.



ACHIEVEMENTS



Integra Ventures Services Pvt. Ltd. is now empanelled with **NABH Mitra**



Integra Ventures Services Pvt. Ltd. is now empanelled with **NABH Digital Mitra**

Integra Ventures is proud to be the **first organization in the Northeast and Eastern region** to receive Provisional Empanelment as an **NABH Mitra**, following the successful completion of the mandatory training program conducted by the National Accreditation Board for Hospitals & Healthcare Providers (NABH). This milestone strengthens its commitment to supporting healthcare organizations in implementing and sustaining quality standards.

Marking a significant milestone, Integra Ventures is the **first organization in the Northeast and Eastern region** to be provisionally empanelled as an **NABH Digital Mitra**, after successfully completing the mandatory NABH training programme. The empanelment reflects its commitment to guiding healthcare institutions in establishing, enhancing, and sustaining digital health standards.

TESTIMONIAL

Trinitas Hospital, Guwahati, Assam



Dr. Nilim Kumar Deka

Dr. Nilim Kumar Deka (MS, MCh Orthopaedics, PG Dip), Trinitas Hospital, shares his experience working with Integra Ventures Services Private Limited, highlighting how thoughtful planning and structured execution supported the hospital's infrastructure and overall care delivery.

CAREER OPPORTUNITIES

DISCOVER EXCITING CAREER PATHS AND GROW WITH US!

We're always looking for passionate, driven individuals to join our team. Whether you're just starting out or looking to take the next step in your professional journey, we offer a dynamic environment where innovation and collaboration thrive.

Explore open positions, learn about our work culture, and see how you can make an impact.

[Join Our Team](#)

Follow us on social media

[About us](#) | [Blog](#) | [Services](#) | [Projects](#)