



CODA
|



CODA

2  1.5  1 

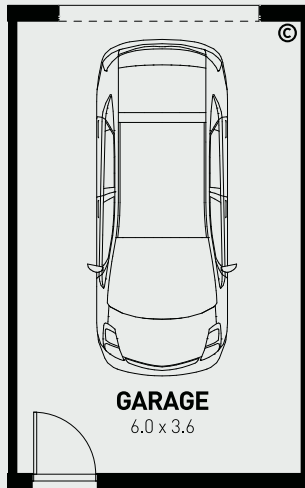
Stylish and functional, the Coda boasts a modern home design for today's busy lifestyle. A study nook is nestled at the front of the home, offering maximum privacy where required.

The open plan living at the rear of the home maximises light and space, with the gourmet kitchen; a distinctive feature with clever storage and separate pantry.

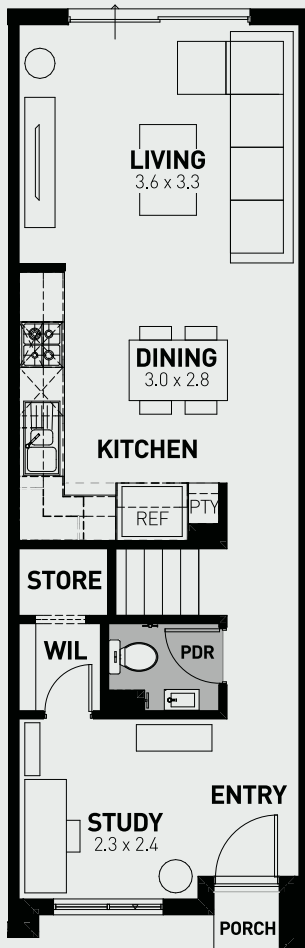
- Quality floor coverings
- Double shower to central bathroom
- Smart control garage door with wall mounted remote and two handsets, camera security and app control
- Caesarstone kitchen benchtops
- Spacious walk-in linen with under stair storage
- Architectural facade
- 2550mm ceiling height
- Gourmet kitchen with stainless steel appliances
- Your choice of chrome or matte black tapware

MAISON
AT ST GERMAIN

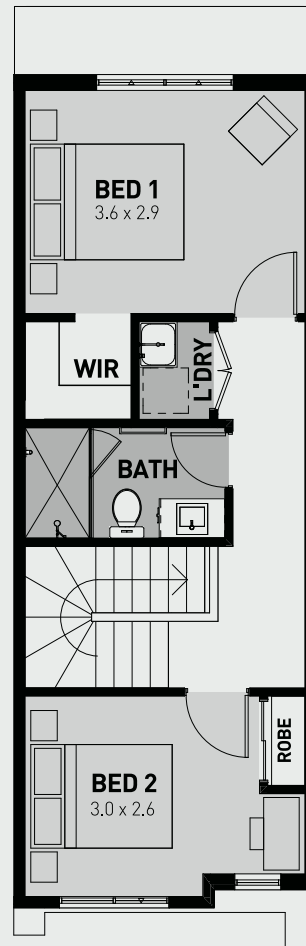
CODA	Area (m ²)
Porch	0.69
Ground Floor	47.98
Garage	25.60
First Floor	43.75
	118.02m ²



GARAGE (NOT IN POSITION)



GROUND FLOOR



FIRST FLOOR

SCALE 1:100