

ETTO
|



ETTO

3 

2 

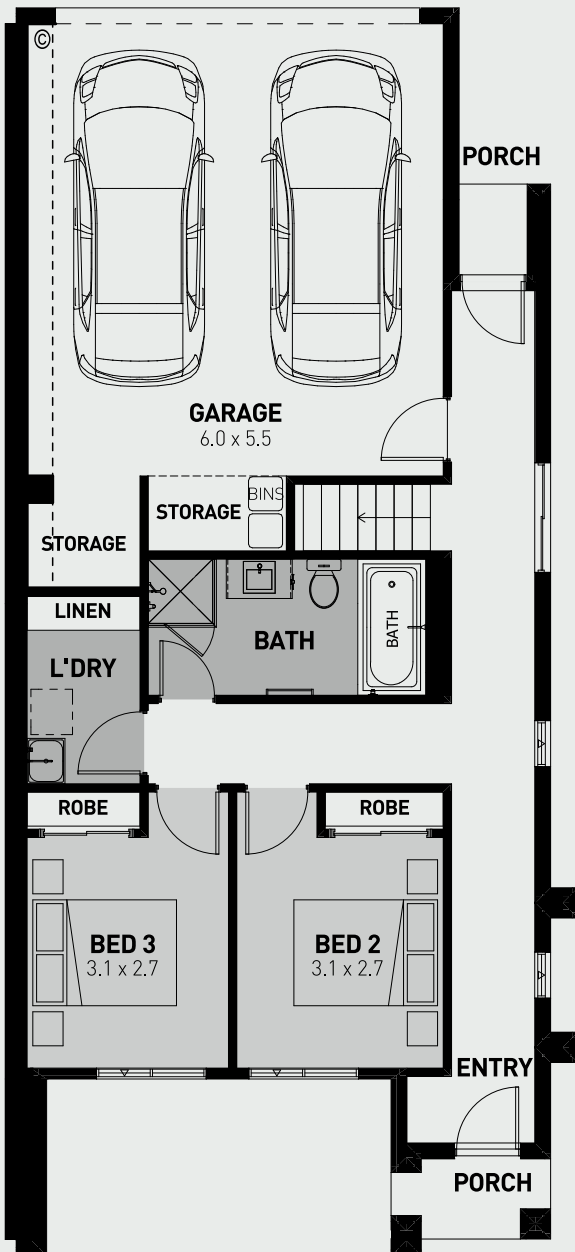
2 

Natural sunlight flows throughout the entire open plan living area from the spacious balcony through to the living, dining and kitchen in the Etto. This three bedroom, two bathroom double rear garage home is an entertainers delight, with great views across the neighbourhood you can enjoy the afternoon sun on the elevated balcony while all three bedrooms remain private from the living areas for a space to really unwind.

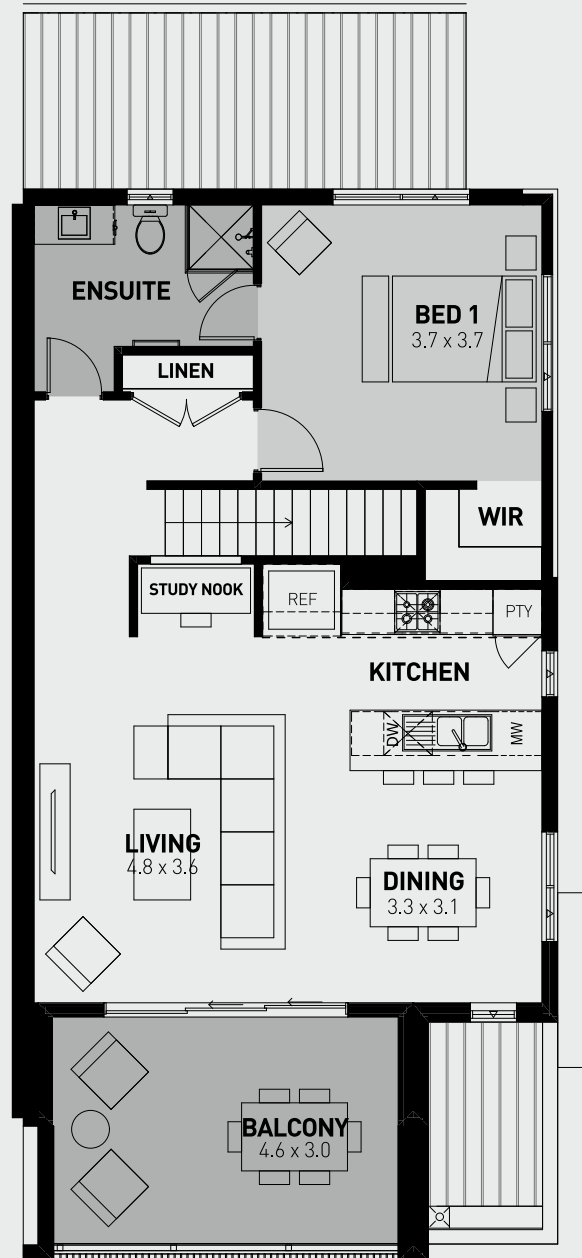
- Gourmet kitchen with stainless steel appliances
- Main bedroom is away from other bedrooms for privacy
- Spacious living area with adjacent balcony with lots of natural light
- Architectural façade
- Quality floor coverings
- Large master suite with WIR and ensuite
- Overhead cupboards to kitchen and over refrigerator space
- 2550m ceiling height

MAISON
AT ST GERMAIN

| ETTO | Area (m ²) |
|--------------|------------------------|
| Porch 1+2 | 2.54 |
| Ground Floor | 58.31 |
| Garage | 41.02 |
| First Floor | 78.15 |
| | 195.12 m ² |



GROUND FLOOR



FIRST FLOOR

SCALE 1:100