



# MIKI

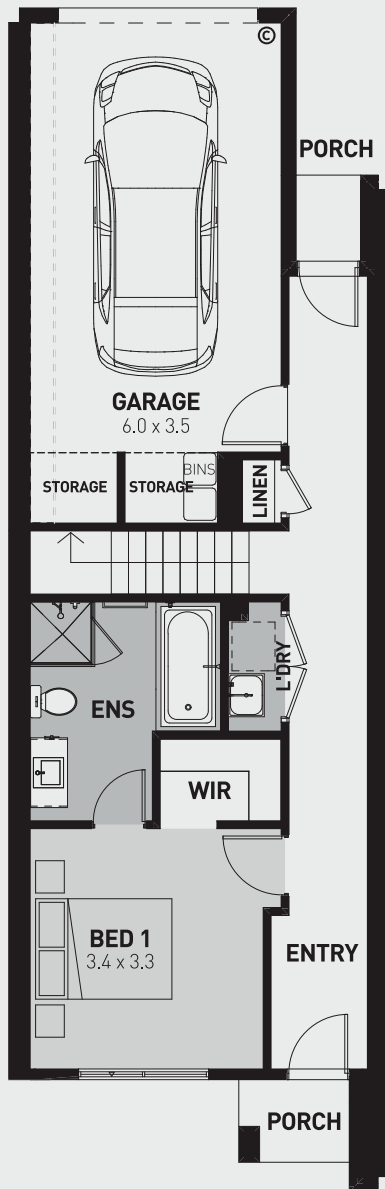
2  2  1 

This cleverly designed use of space embraces a light-filled open plan living area and two very private bedrooms, the master with a generous ensuite including bath and walk-in robe. The Miki is the perfect low maintenance home, designed to bring the outside in with the living and dining areas nicely flowing onto the entertainers balcony.

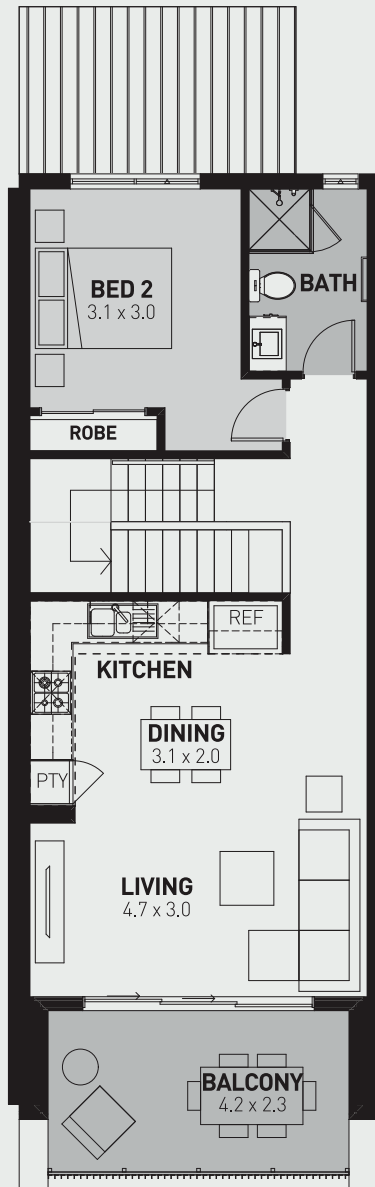
- Architectural façade
- Large master suite with walk-in robe and ensuite
- Gourmet kitchen with stainless steel appliances
- Quality floor coverings
- Spacious balcony with lots of natural light
- Stylish window treatments
- Conveniently located storage
- Overhead cupboards to kitchen and over refrigerator space
- 2550mm ceiling height
- Caesarstone kitchen benchtops

MAISON  
AT ST GERMAIN

MIK1	Area (m <sup>2</sup> )
Porch 1+2	2.75
Ground Floor	45.43
Garage	27.02
First Floor	59.51
Balcony	10.37
	145.12 m <sup>2</sup>



**GROUND FLOOR**



**FIRST FLOOR**

**SCALE 1:100**