

OCTAVE



# OCTAVE

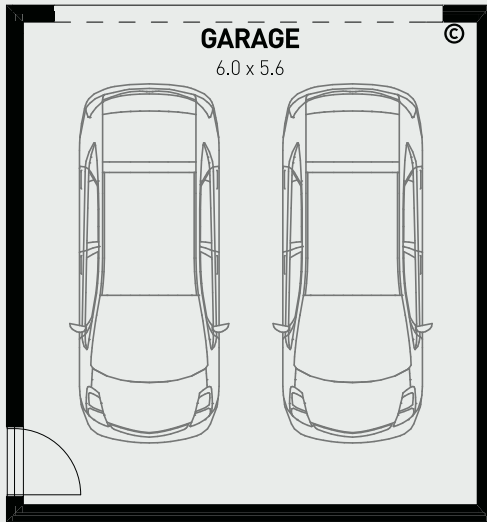
3  2.5  2 

Combining modern architectural elements with innovative building materials, the Octave terrace homes represent a new standard in contemporary and affordable design. The simple and balanced composition, bold black window frames and timeless grey colour palette, featuring dark painted architectural cladding, creates a striking urban streetscape.

- LED downlights to all living areas
- Overhead cupboards to kitchen and over refrigerator space
- Double shower to ensuite
- Architectural façade
- Quality floor coverings
- Large master suite with WIR and ensuite
- 2550m ceiling height
- Split system to living and master suite
- Exposed aggregate concrete driveway, outdoor living, porch and pathway

MAISON  
AT ST GERMAIN

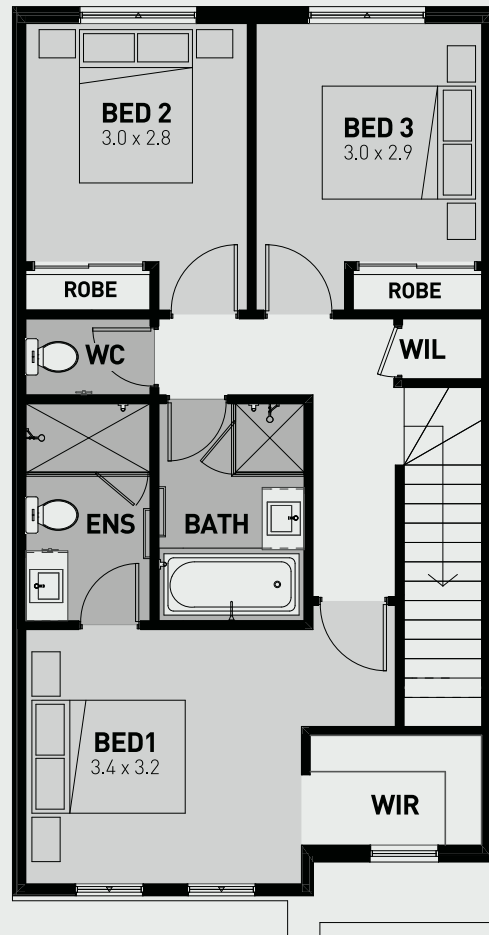
OCTAVE	Area (m <sup>2</sup> )
Porch 1+2	1.85
Ground Floor	65.42
Garage	38.40
First Floor	65.17
	170.84 m <sup>2</sup>



**GARAGE (NOT IN POSITION)**



**GROUND FLOOR**



**FIRST FLOOR**

**SCALE 1:100**