

## UNITY TERRACE



# UNITY TERRACE

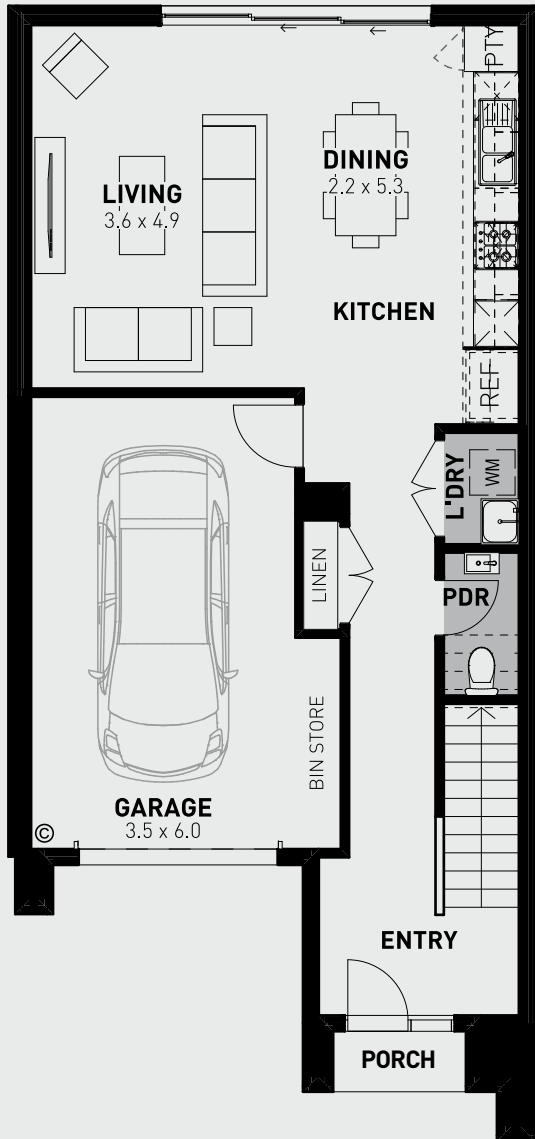
3  2  1 

This is one clever architectural design that maximises the use of space, so you really get that feel of luxury. The large glass sliding door to the rear of the home, makes a big statement, along with the open kitchen and living area natural sunlight. The functional layout places the laundry on the ground floor and there is handy access to the kitchen from the garage.

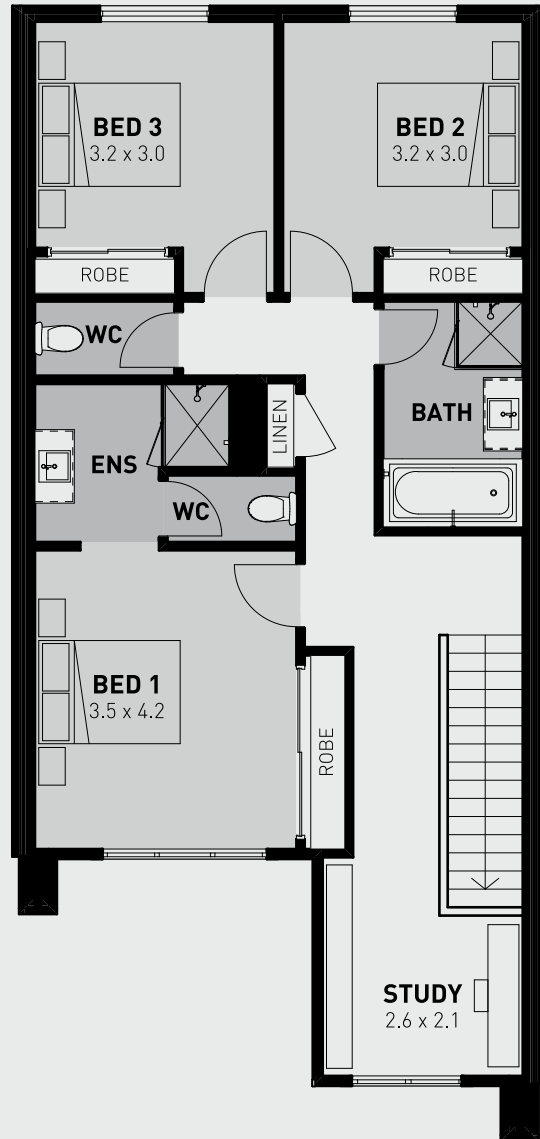
- Open-plan kitchen, living and dining area that opens to terrace backyard
- 2550mm high ceilings
- 20mm Caesarstone kitchen benchtops
- Front and rear landscaping
- Exposed aggregate driveway
- Study nook with ample natural light
- Smart control garage door with wall mounted remote and two handsets, camera security and app control
- Quality floor coverings
- Your choice of chrome or matte black tapware

MAISON  
AT ST GERMAIN

UNITY TERRACE	Area (m <sup>2</sup> )
Porch	1.82
Ground Floor	58.99
Garage	25.19
First Floor	85.77
	171.77m <sup>2</sup>



**GROUND FLOOR**



**FIRST FLOOR**

**SCALE 1:100**