

UNITY VISTA



UNITY VISTA

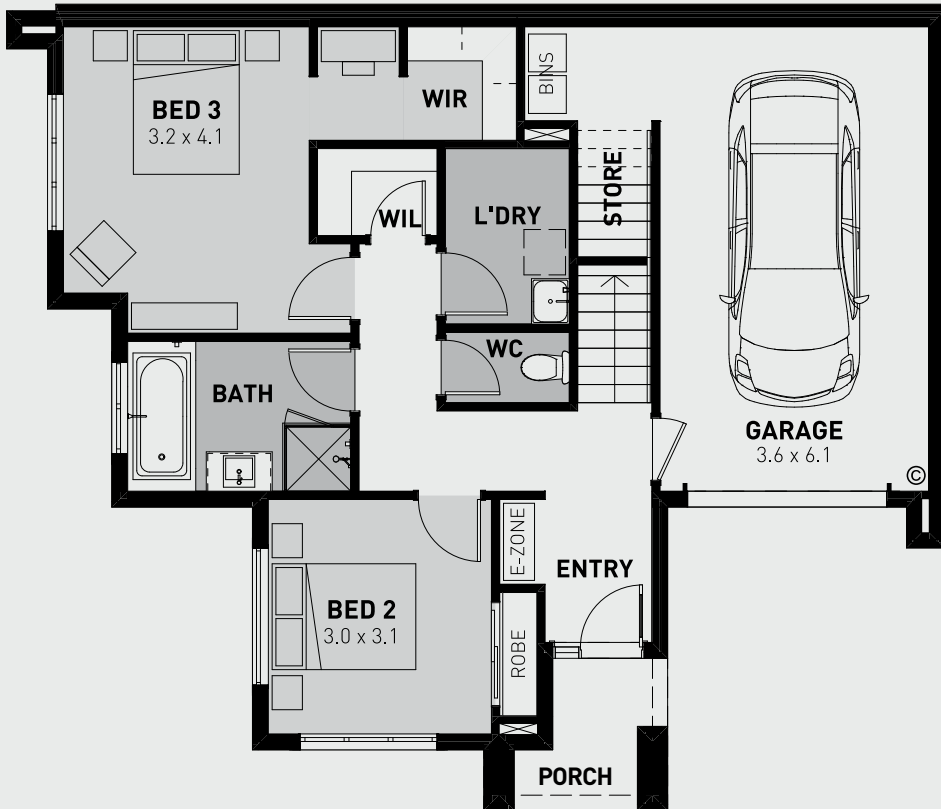
3  2  1 

The Unity Vista is a stunning light-filled home that sits proud on any street. With three bedrooms across two storeys, this home is specifically designed to maximise natural light for each room. Up on the first floor the staircase opens on to a large open-plan living, kitchen and dining space. There's also a superb balcony next to the kitchen, allowing for each access when entertaining guests.

- Smart control garage door with wall mounted remote and two handsets, camera security and app control
- Ample storage throughout
- Spacious entertainer's balcony
- Gourmet kitchen with stainless steel appliances
- Abundant natural light throughout the open-plan living, dining and kitchen
- Quality floor coverings
- Stylish window treatments
- LED downlights to all living areas
- 20mm Caesarstone kitchen benchtops

MAISON
AT ST GERMAIN

UNITY VISTA	Area (m ²)
Porch	3.78
Ground Floor	66.23
Garage	24.40
First Floor	73.64
Balcony	17.31
	185.36m ²



GROUND FLOOR



FIRST FLOOR

SCALE 1:100