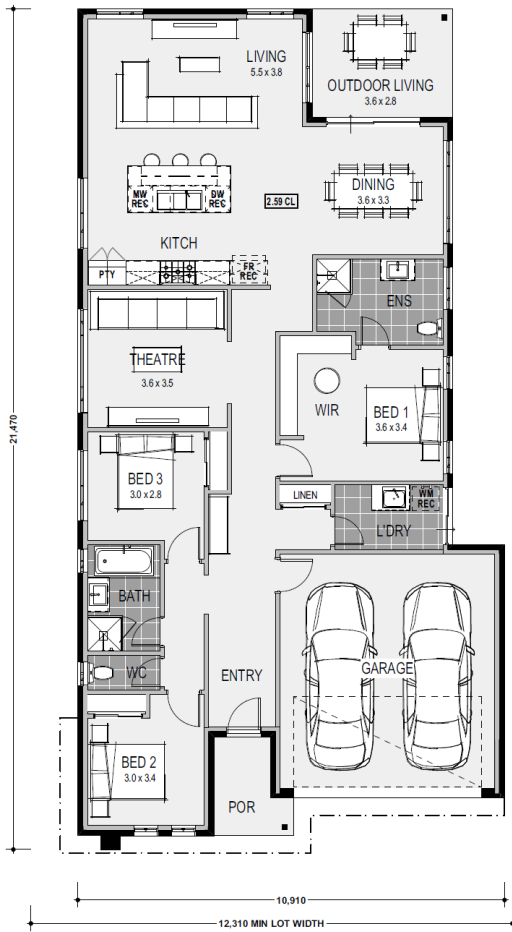




House Plan:



LOT #1625

Verdant Hill

Address: Tarneit, 3029



386 m²

Charlotte 22 - Melbourne - Classic

Package Price From

3 2 2 22 sq

\$693,990*

About package:

All of this included in your new home

- Category 1 facade
- Timber laminate flooring & loop pile carpet
- Stone benchtops to kitchen, ensuite and bathroom
- European Design flickmixer tapware
- Rain head showers
- Semi framed shower screens
- Tiled shower bases
- Lever Door Handles
- Double Lock Up Garage with remote control door
- Gas ducted heating throughout
- Includes FHOG, discounts from Builder and Developer

Classic Kitchen Inclusions

- Huge 1200mm Wide Island Bench with breakfast bar
- Stone Benchtops
- European High Gloss Cabinetry
- Extensive Drawers
- 900mm Westinghouse Freestanding Stove
- 900mm Westinghouse Canopy Rangehood
- Microwave recess with pot drawer
- European style designer 1 & 3/4 bowl stainless steel sink
- Dishwasher recess
- Pull out bin
- Soft closing doors & drawers

ENQUIRE NOW:

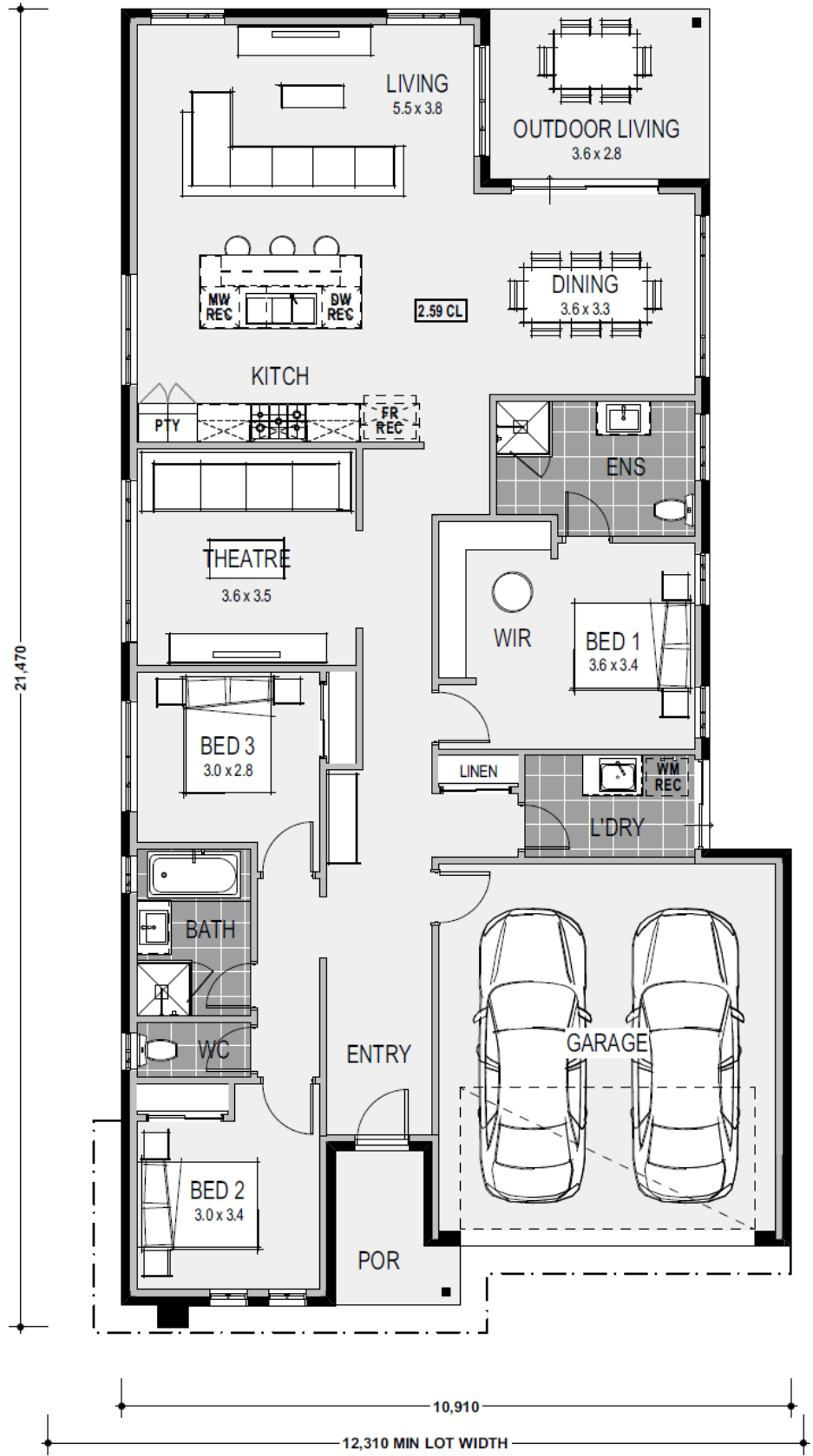
Anu Saxena • P: 0421410550 • E: Anu.saxena@homegroup.com.au

Group

*All Images and plans depicted are for illustrative purposes only and are subject to change. This work or any part of it may not be reproduced or copied in any form without the prior written consent of Home Group. © Home Group Pty Ltd CDB-U 59667. *All Prices and specifications shown are subject to change without notice, and are subject to final confirmation upon the terms of any agreement with Home Group at the time of purchase. For full terms and conditions applicable please see www.homegroup.com.au/terms

Estate Features:

- ✓ Tarneit Rise Primary School
- ✓ Tarneit Gardens Shopping Centre
- ✓ Tarneit Station



ENQUIRE NOW:

Anu Saxena • P: 0421410550 • E: Anu.saxena@homegroup.com.au

Group

*All Images and plans depicted are for illustrative purposes only and are subject to change. This work or any part of it may not be reproduced or copied in any form without the prior written consent of Home Group. © Home Group Pty Ltd CDB-U 59667. *All Prices and specifications shown are subject to change without notice, and are subject to final confirmation upon the terms of any agreement with Home Group at the time of purchase. For full terms and conditions applicable please see www.homegroup.com.au/terms