



**Verdant Hill Estate**  
Coolmoor Street, Tarneit  
Lot 1704

**Facade:** Clairmont

**House:** 21.82 sq **Land:** 350 m2

4  
 2  
 1  
 2

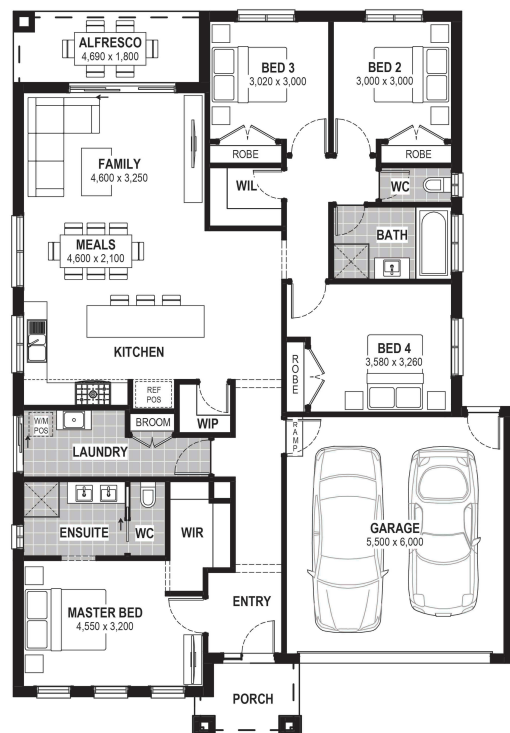
## Queensberry 22

### Inclusions

- Truecore Steel House Frame
- Colorbond Steel Roof (with Sarking)
- High Performance Double Glazed Windows & Doors
- 8 Star Energy Efficient
- 7 x 440w Panels & 3KW Inverter (single phase)
- Bushfire Compliance to BAL 12.5
- 900mm Appliances
- 50 Year Structural Guarantee
- 900mm Rangehood & Upright Cooker
- Overhead Cupboards to Kitchen
- 2550 Ceiling Height
- Claremont Facade
- Deluxe Electrical Pack
- Dishwasher
- Flooring (Carpet & Laminate)
- Stone Benchtops throughout
- Fibre Provisioning
- Fixed Site Costs
- Recycled Water

### Contact:

Mathew Jijo  
0431 745 435  
houseandland@jgking.com.au



\*Conditions apply, speak to your New Home Advisor for future details. Not all house and land packages are created as standard or on blocks that are optimally orientated and therefore JG King Homes cannot guarantee that it will achieve an 8 star NatHERS performance rating. Please talk with your new home advisor to see whether this package is classified as standard and optimally orientated in order to achieve an 8-star rating at no additional cost.