

IMPROVE THE QUALITY OF CLINICAL DIAGNOSTICS WITH TARGETED PRODUCT INNOVATIONS

Disclaimer

This presentation does not constitute an invitation to underwrite, subscribe for, or otherwise acquire or dispose of any Revenio Group Corporations' shares.

Group's past performance is no guide to future performance, and persons needing advice should consult an independent financial adviser.

This presentation contains statements that are estimates based on the management's best knowledge at the time they were made. For this reason, they involve a certain amount of inherent risk and uncertainty. The estimates may change in the event of significant changes in general economic conditions.

We focus on sight-threatening pathologies
 The most prevalent ophthalmic disorders are age related

Glaucoma

- 80 million detected
- 50 % undetected
- Leading cause of preventable blindness
- Clinical management requires tonometry, fundus imaging and perimetry

Diabetic Retinopathy

- Global prevalence of diabetes among adults risen from 4.7% in 1980 to 8.5% in 2014
- Detected and monitored by means of fundus imaging

Age-related Macular Degeneration

- 196 million global projected cases in 2020, rising to 288 million in 2040
- Clinically detected and monitored with fundus imaging and OCT

Glaucoma, diabetic retinopathy, and age-related macular degeneration collectively led to more than 19 million cases of vision impairment in adults aged 50+ years in 2020, making these diseases important targets for prevention and treatment”

The Lancet Global Health 2021



Improve the quality of clinical diagnostics with targeted product innovations

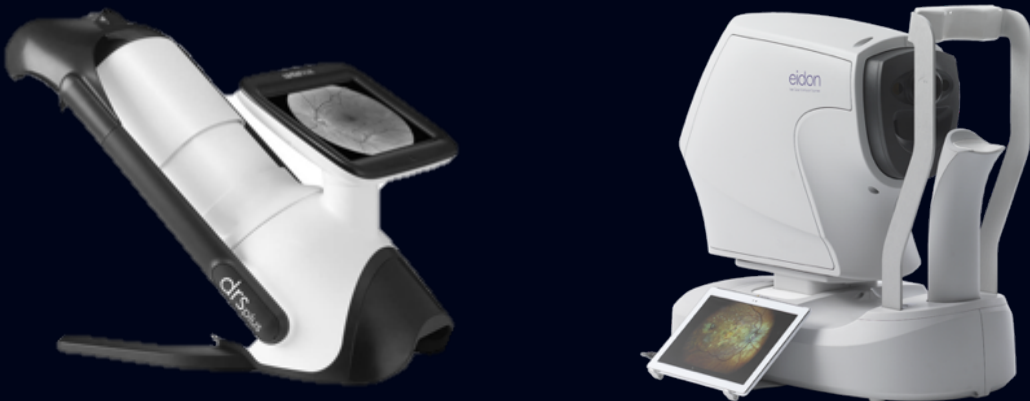
Tonometry

- Rebound tonometry
- Home tonometry



Fundus Imaging

- True-color confocal imaging
- Fully automated capture

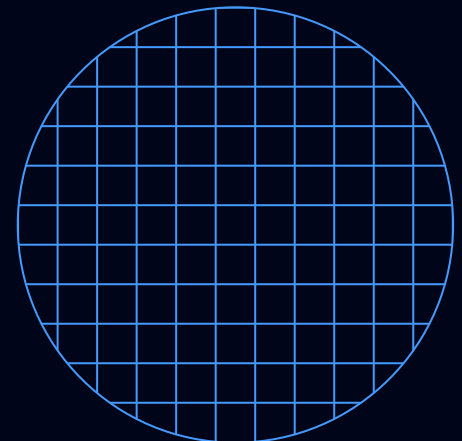


Perimetry

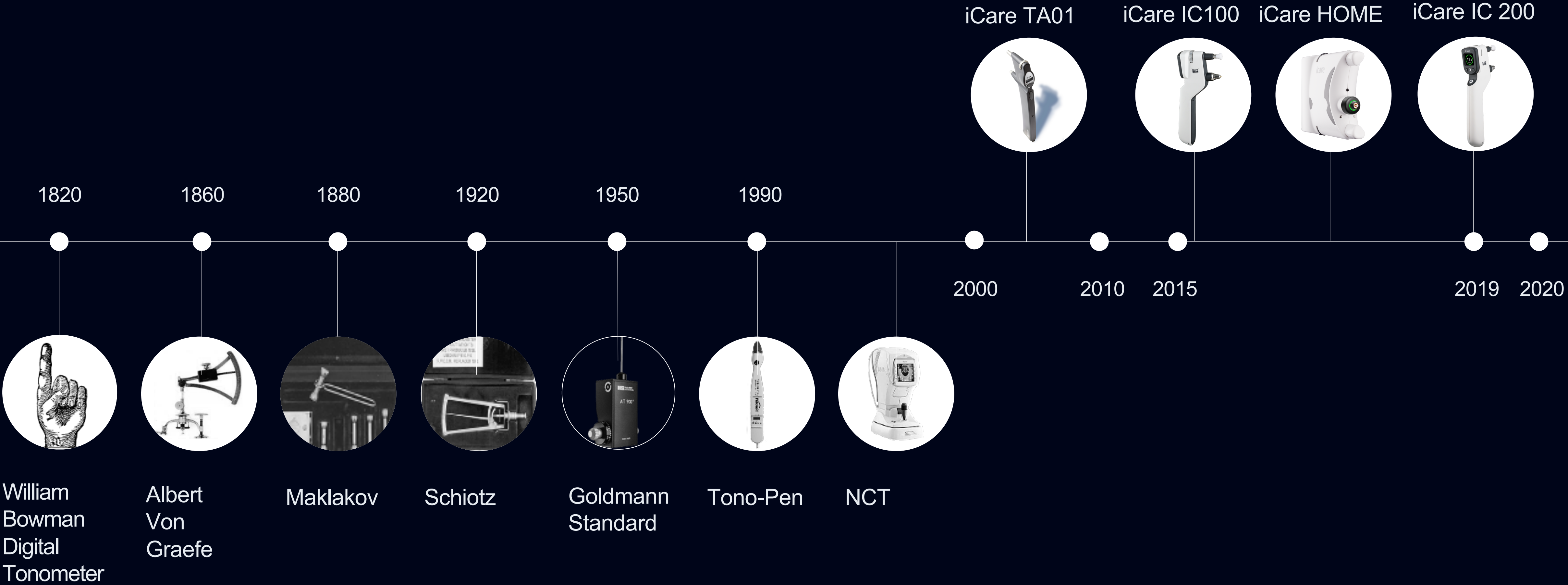
- Fundus imaging & automated perimetry in one device



Future products & product enhancements



Make rebound technology the clinical standard for tonometry



Make rebound technology the clinical standard for tonometry



Highest accuracy and repeatability

Safe for patients, due to the disposable probes

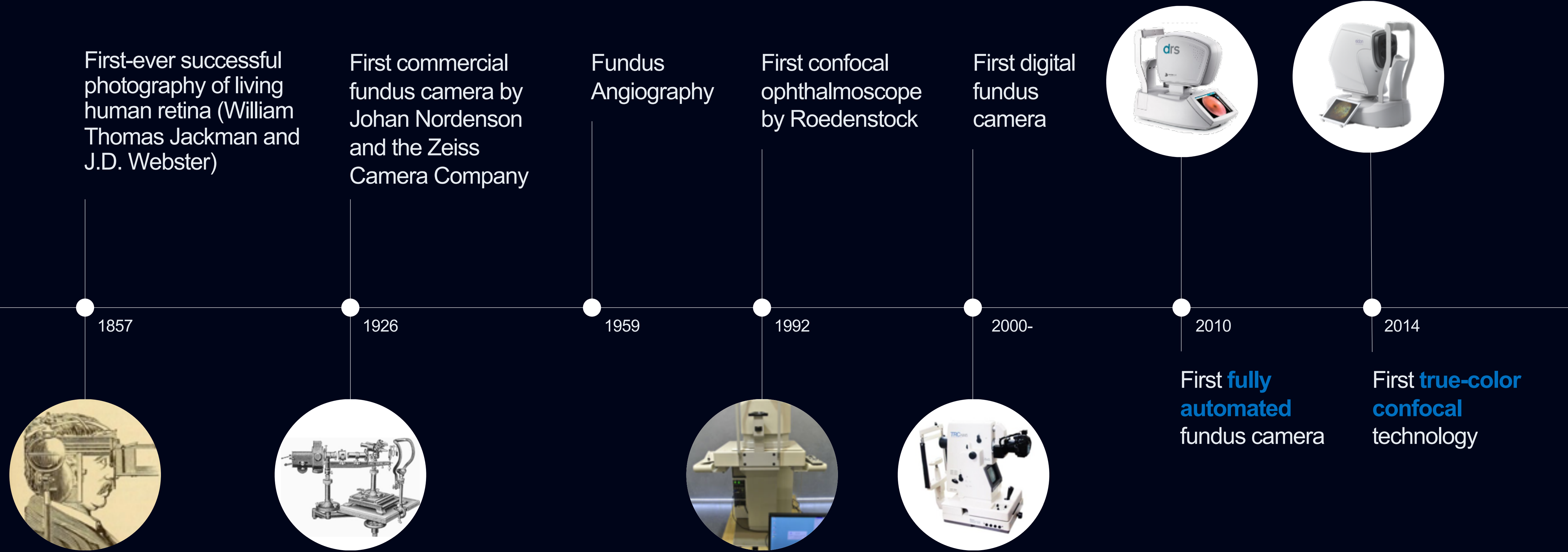
Fast measurement

Highest patient comfort

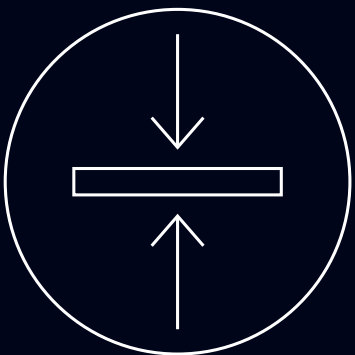
Ease of use, minimal training

Compact size

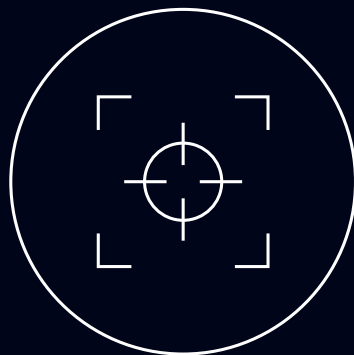
Make true-color confocal fundus imaging the clinical standard



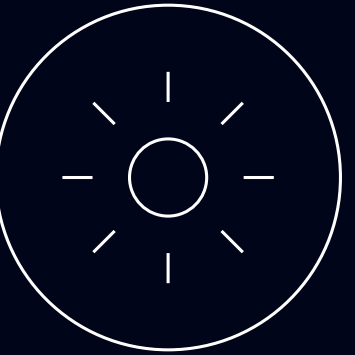
In 2010, we were the first to introduce fully automated image acquisition



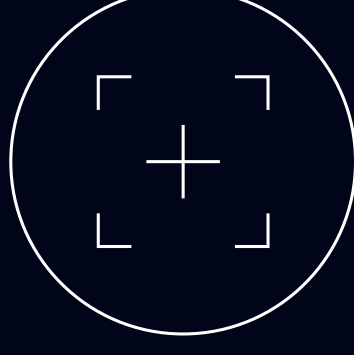
Auto-alignment



Auto-focus



Auto-exposure



Auto-capture

Full automation:

- delivers consistent-quality images
- greatly enhances ease of use
- frees doctors from spending time with machines
- makes screening accessible to enable prevention

In 2014, we were first to introduce true-color confocal imaging

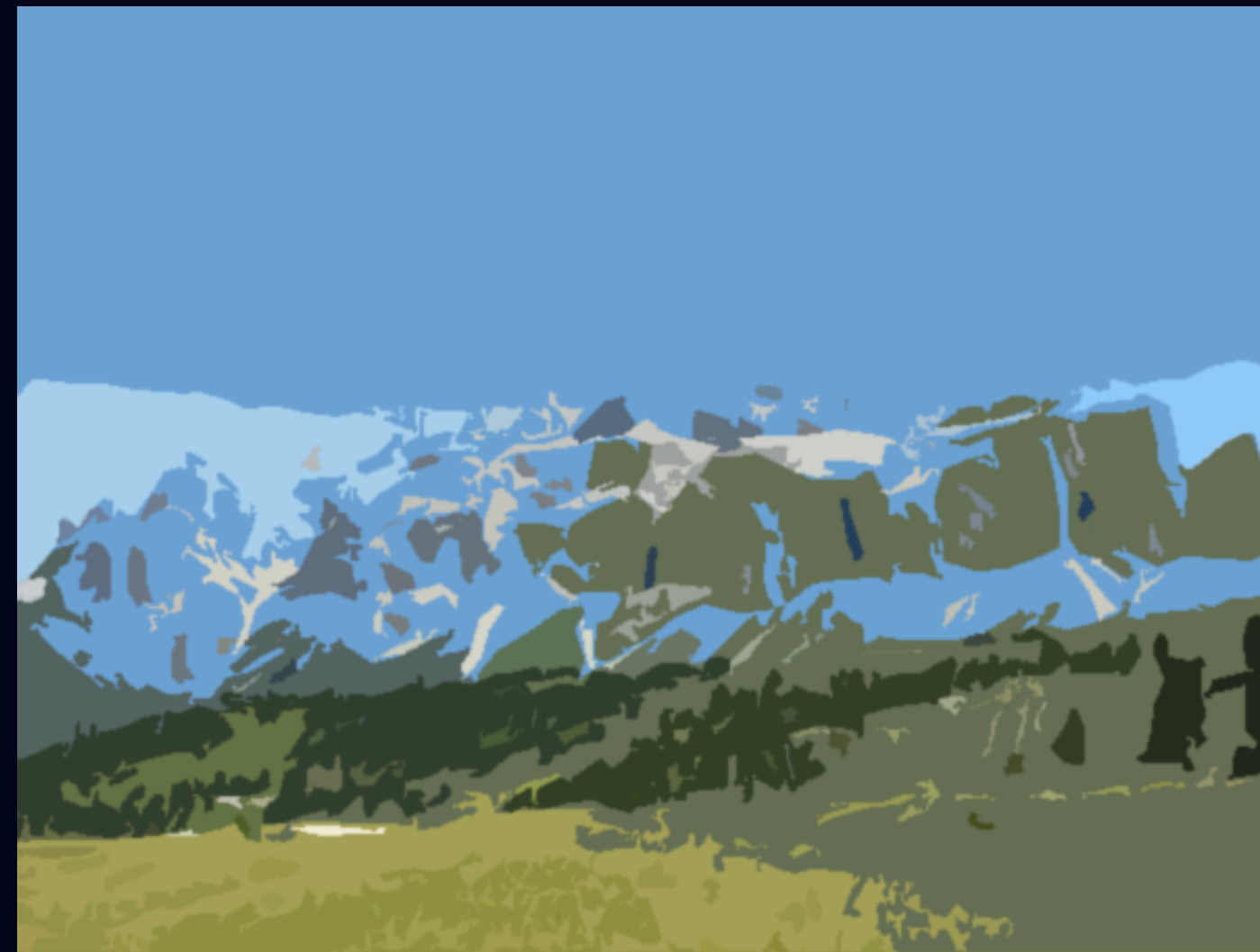
Our technology:

Improves image resolution and visibility of details

Provides color fidelity

Augments information content

Eliminates need for pupil dilation



In 2014, we were first to introduce true-color confocal imaging

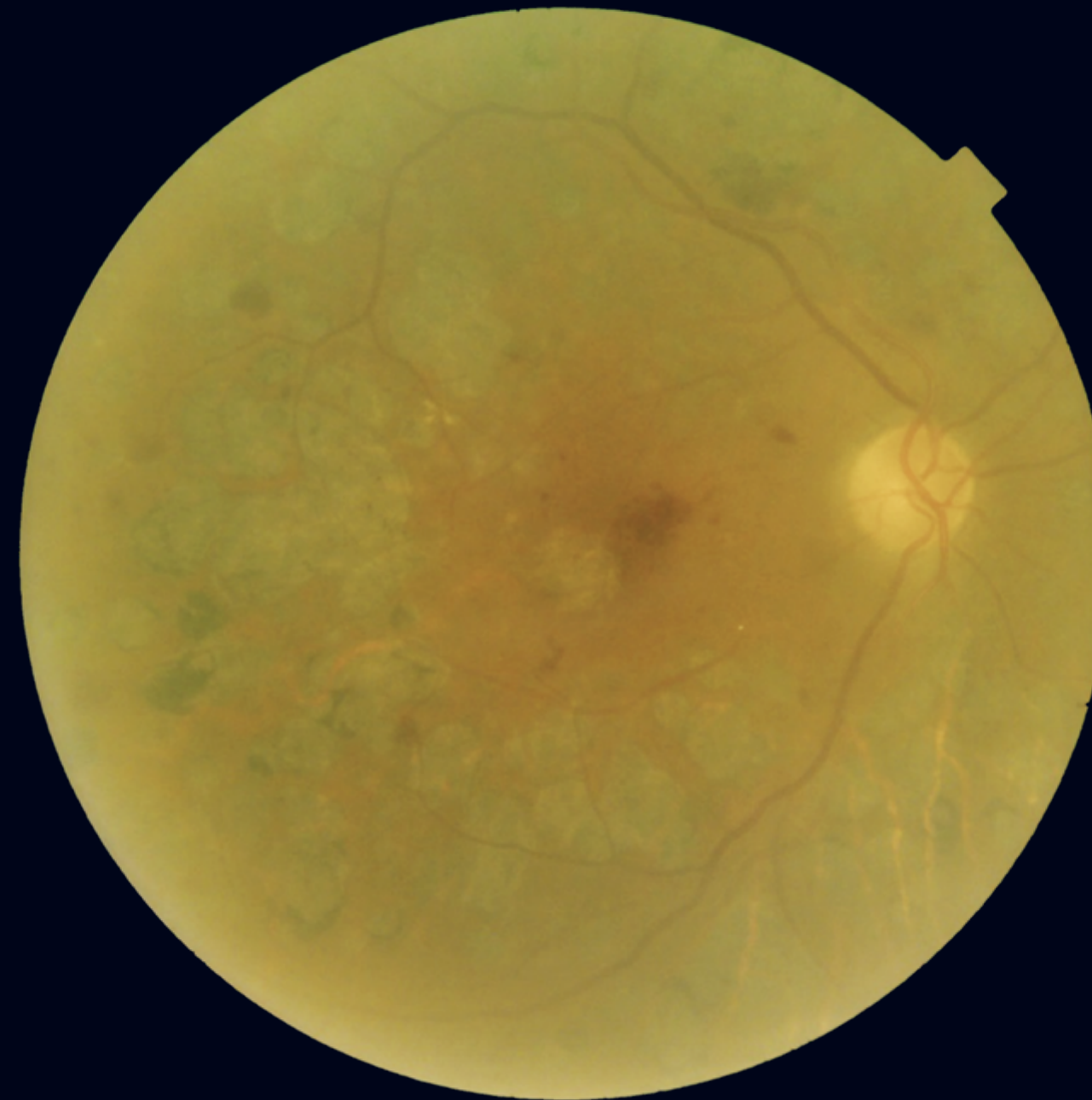
Our technology:

Improves image resolution and visibility of details

Provides color fidelity

Augments information content

Eliminates need for pupil dilation



Make true-color confocal the standard in fundus imaging

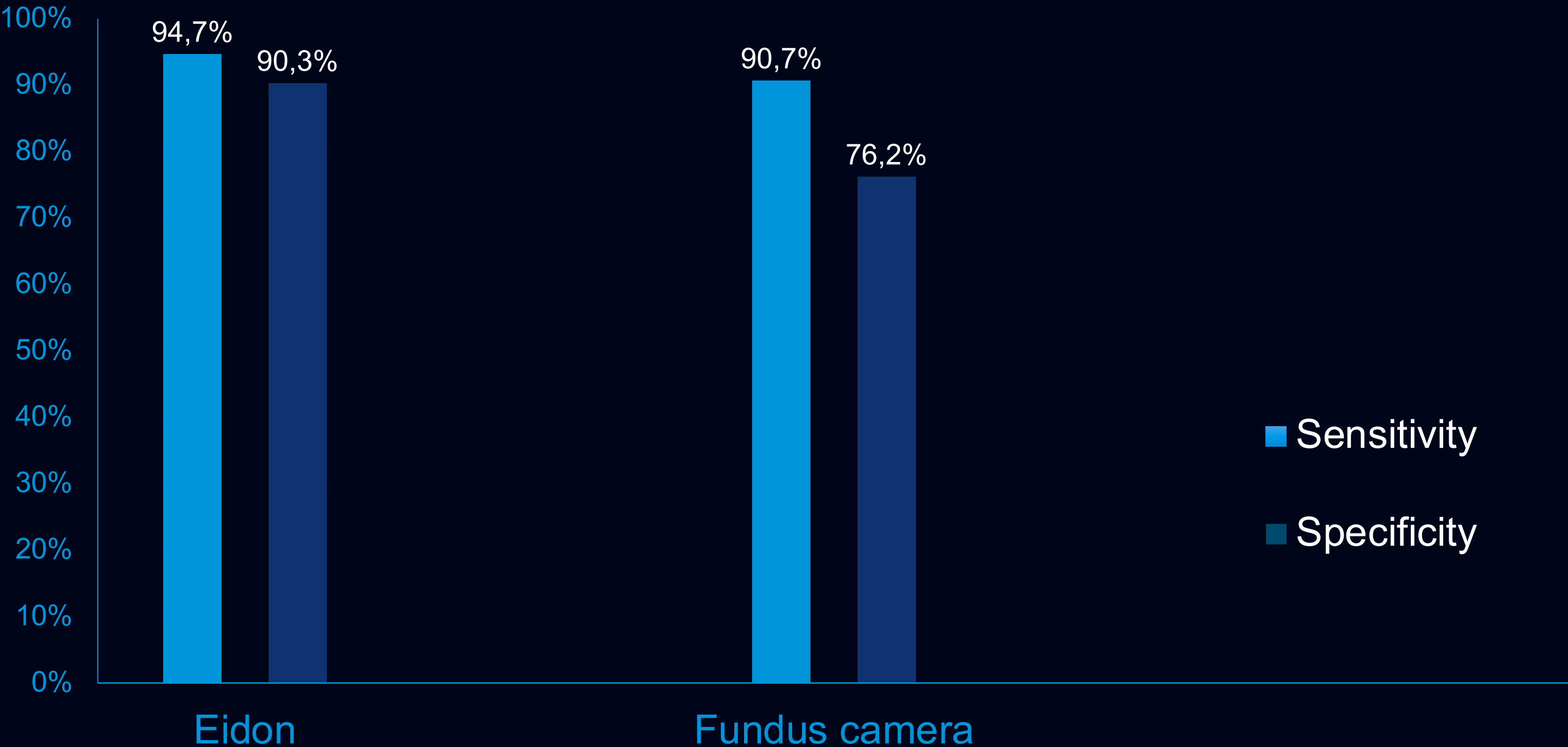
Overall, true-color confocal imaging combined with fully automated acquisition:

Increase accessibility of imaging

Enhance clinical accuracy

Maximize performance of autonomous AI solutions

AI performance for autonomous detection of Diabetic Retinopathy:
3rd party's AI using Eidon images vs. fundus camera

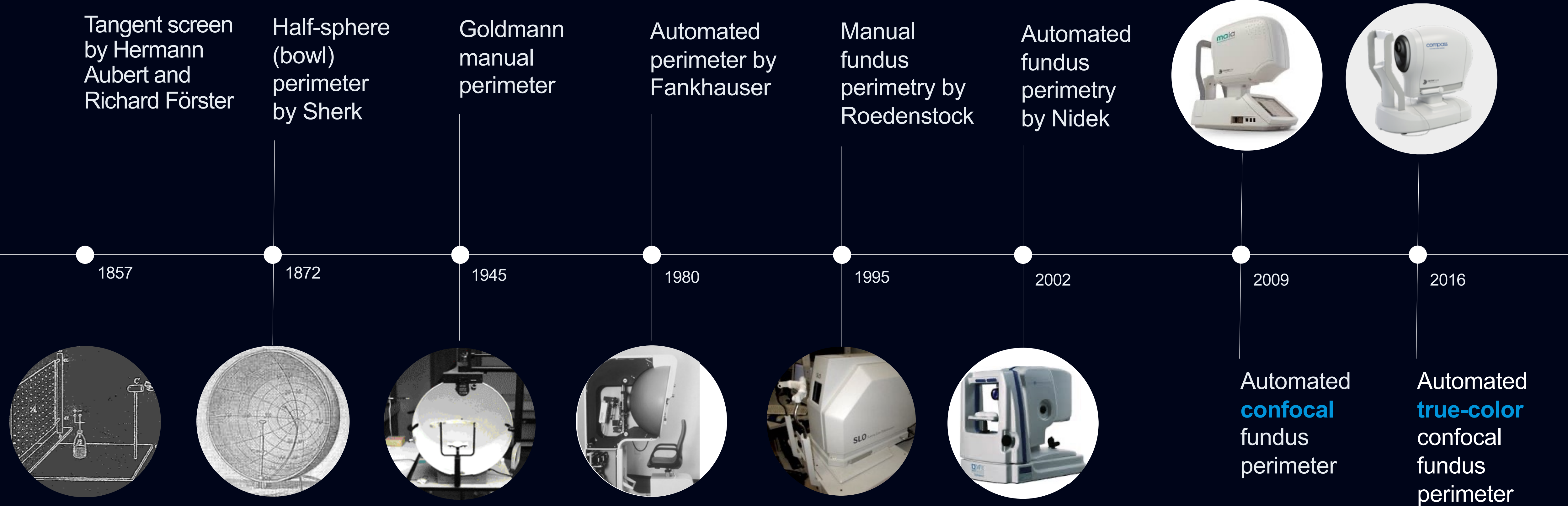


Make fundus perimetry a standard in the management of glaucoma

Perimetry is a measurement used to detect disfunctions in the visual field.



History of perimetry



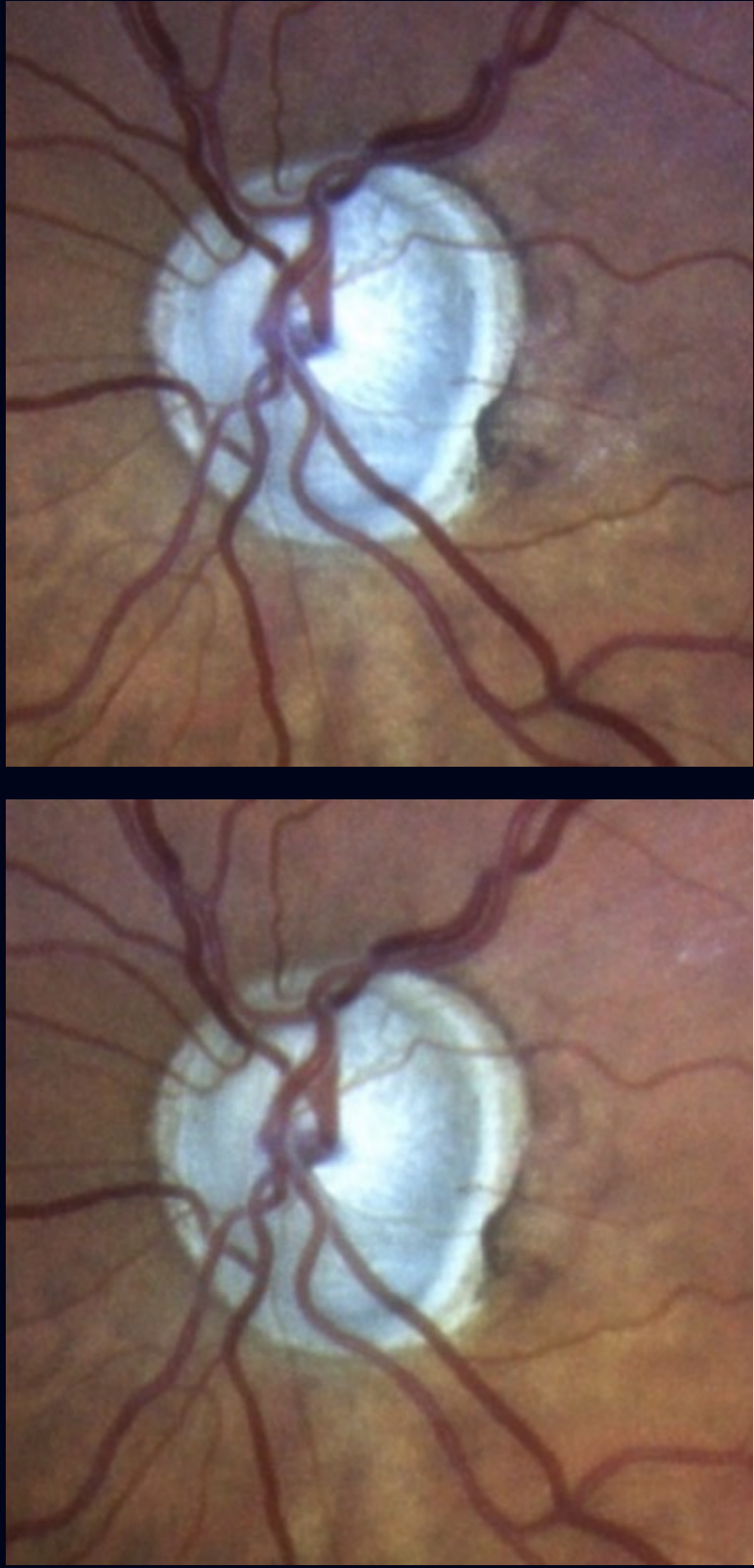
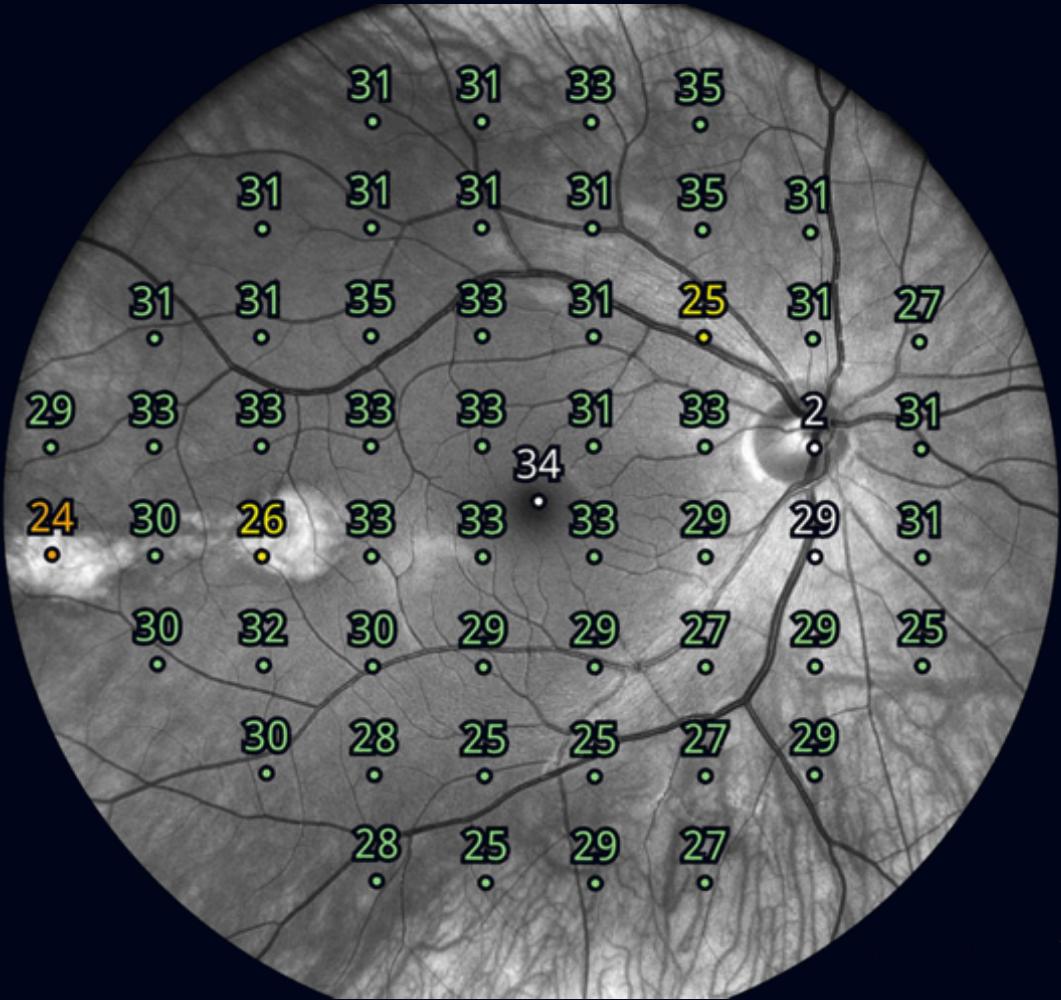
Make fundus perimetry a standard in the management of glaucoma

Our technology:

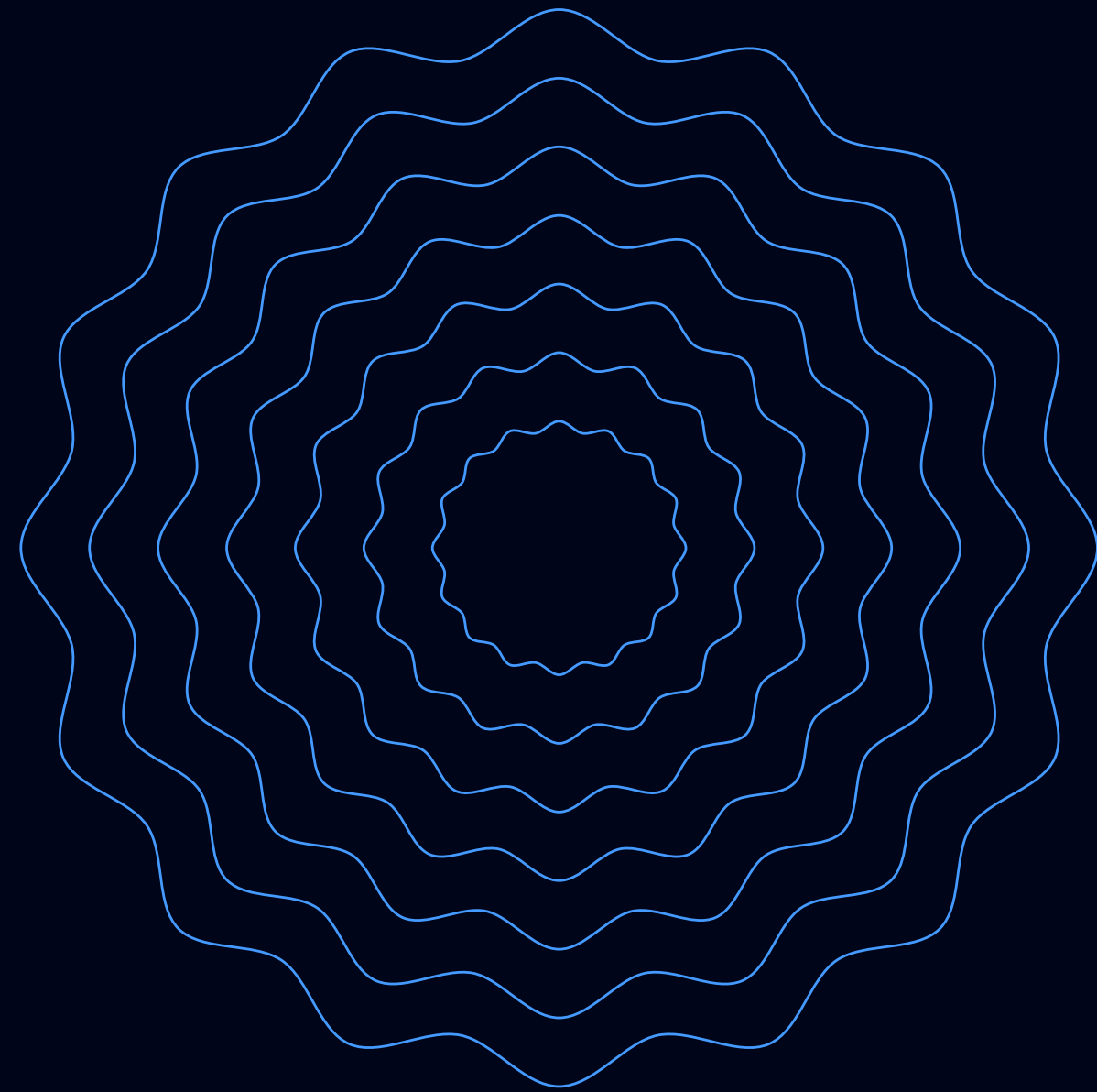
Improves accuracy of the measurement by compensating eye movements

Provides a combined assessment of the anatomy and function of the retina

Offers unique capabilities for stereoscopic imaging of the optic nerve

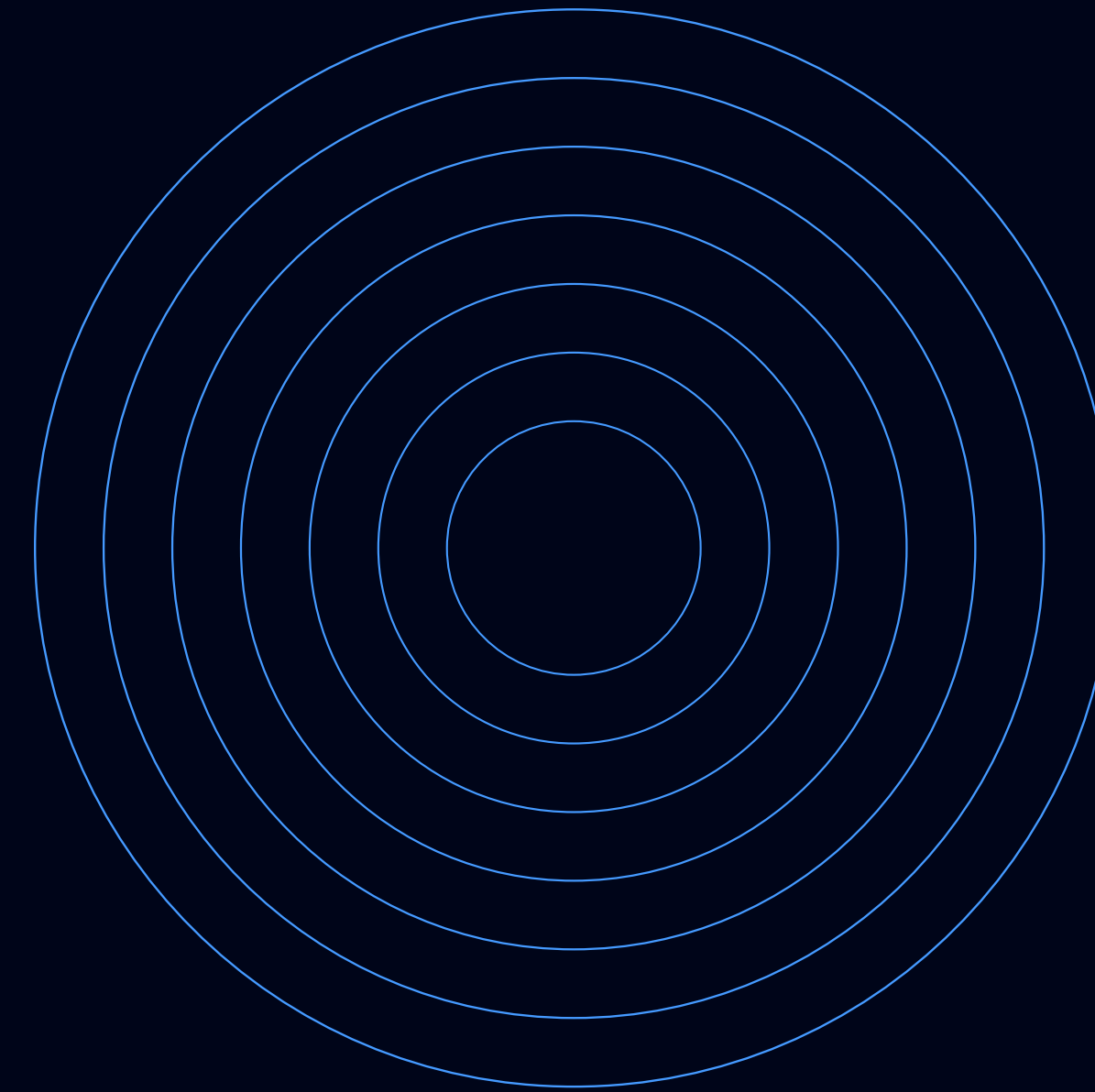


Expand product portfolio both organically and inorganically



Organic expansion

is envisioned both in posterior segment (retina) as well as in anterior segment (ocular surface and anterior chamber) diagnostic



Inorganic expansion

is sought by exploring OEM and acquisition opportunities targeting products that are complementary to the existing portfolio

iCare HOME2 – Easy and accurate IOP self-measurement

Unsurpassed ease of use and accuracy in monitoring real-world IOP behavior

Most patients can take iCare HOME2 into use simply by following the advice in the training materials.

iCare HOME2 guides the patient to always make a high-quality measurement.



iCare HOME2 – Glaucoma management based on real-life IOP information

Optimizing treatment plan

Assessing need for and effectiveness of surgery

Improving patients' compliance to medication

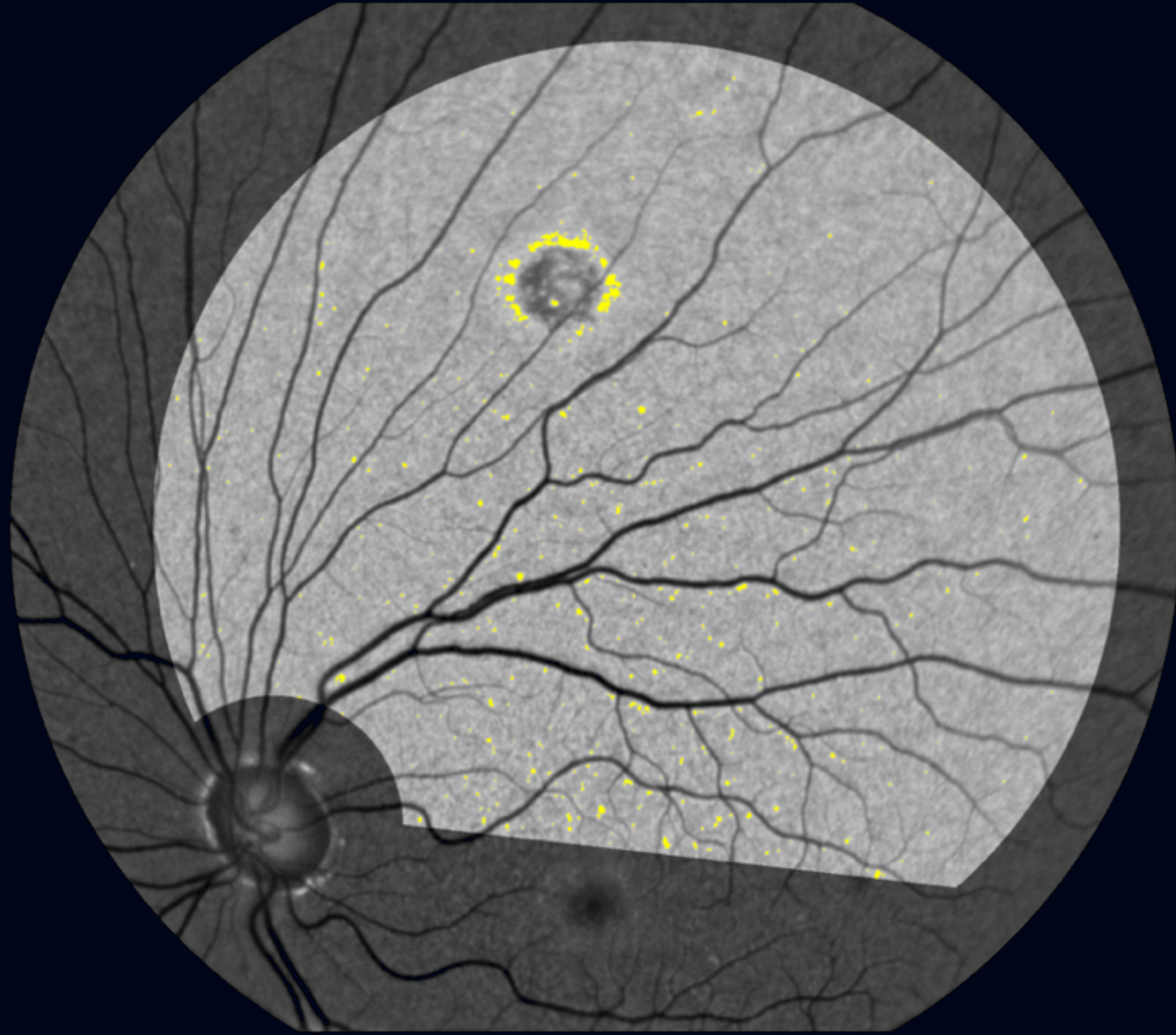
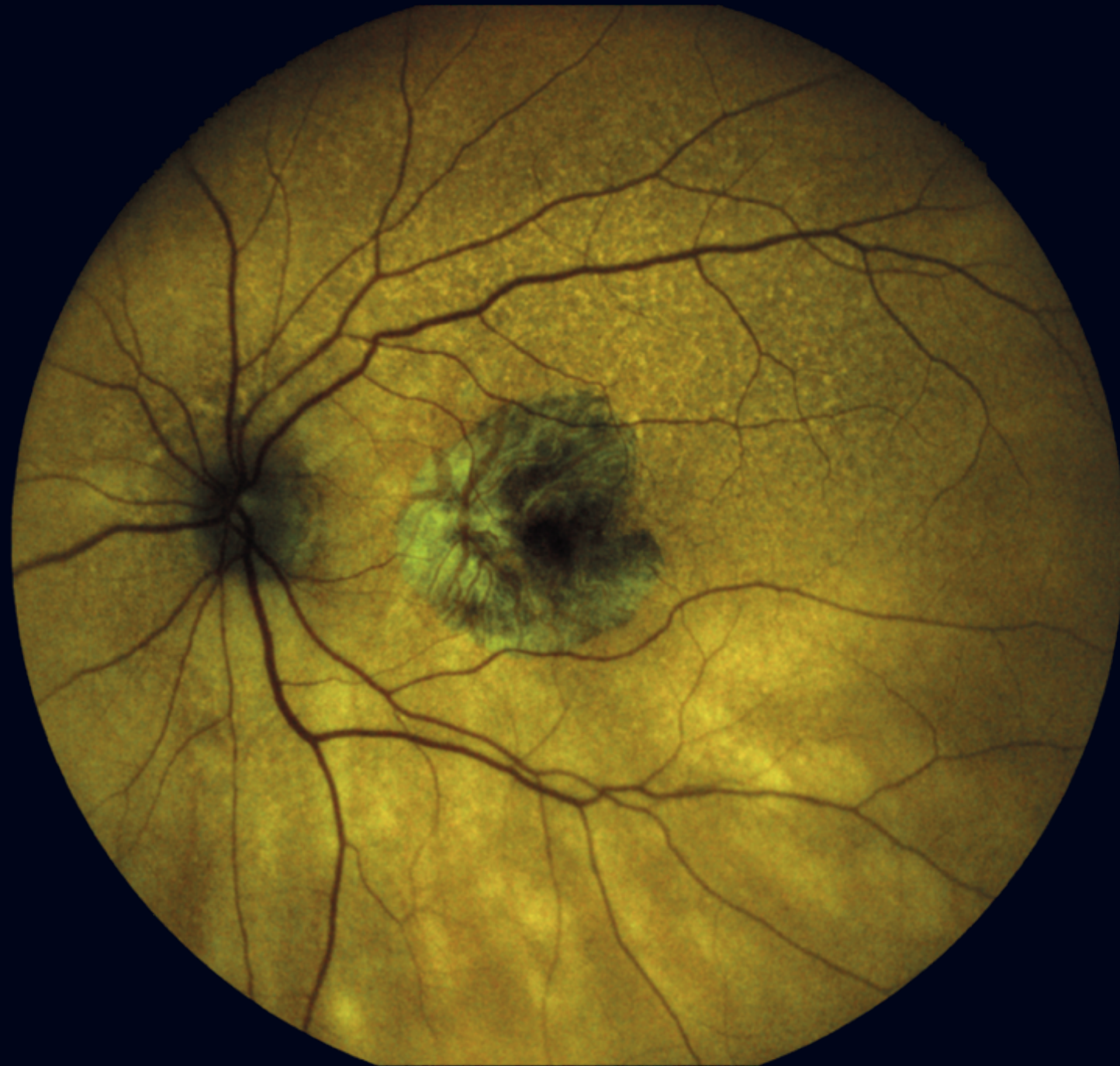


Assess future innovation opportunities through clinical research

We are supporting clinical research in the following areas of imaging where we have developed innovative solutions:

Metabolic retinal imaging using novel auto-fluorescence methods

Retinal imaging to detect signs of Alzheimer's disease



Improve the quality of clinical diagnostics with targeted product innovations

Make rebound technology the clinical standard for tonometry

Make true-color confocal imaging the standard in fundus imaging

Make fundus perimetry a standard in the management of glaucoma

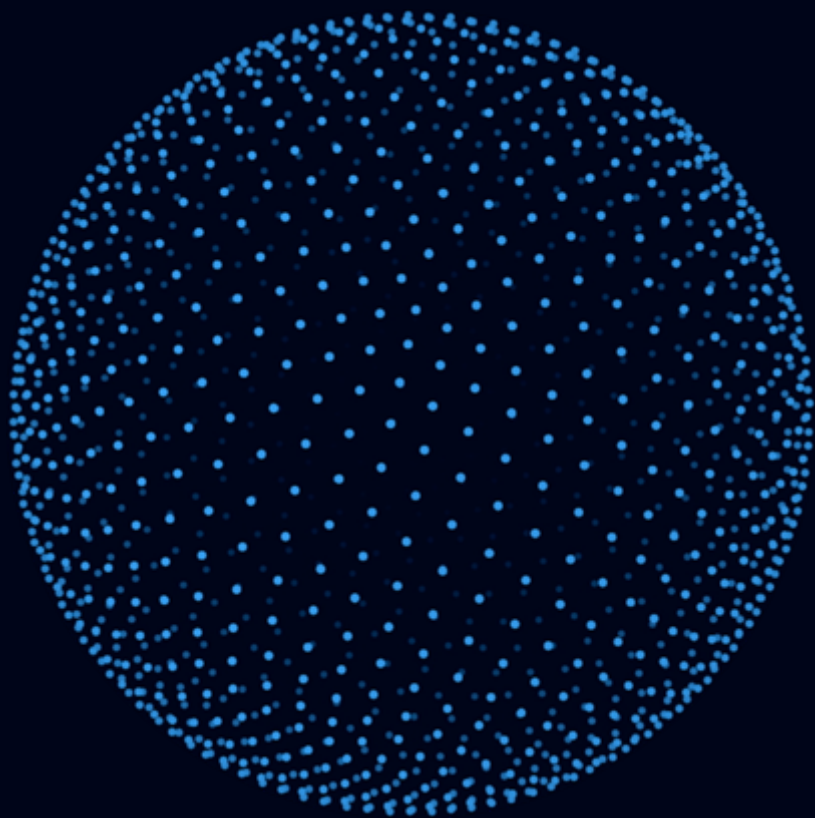


Key takeaways

Assess future innovation opportunities through research

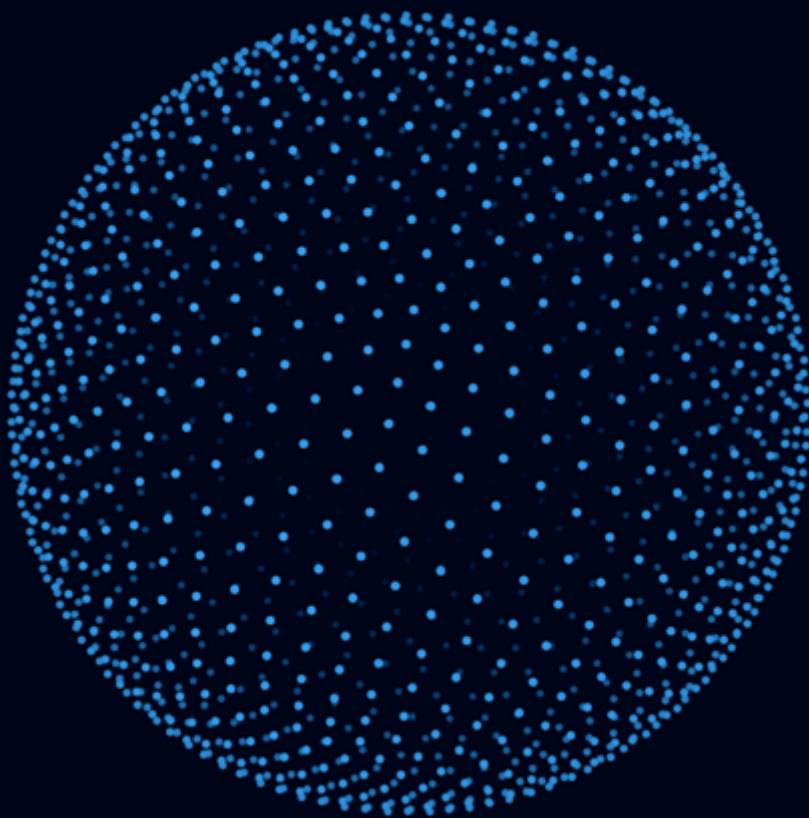
Expand product portfolio both organically and inorganically

We aspire to keep the wonderful world visible for all
with following key strategic cornerstones



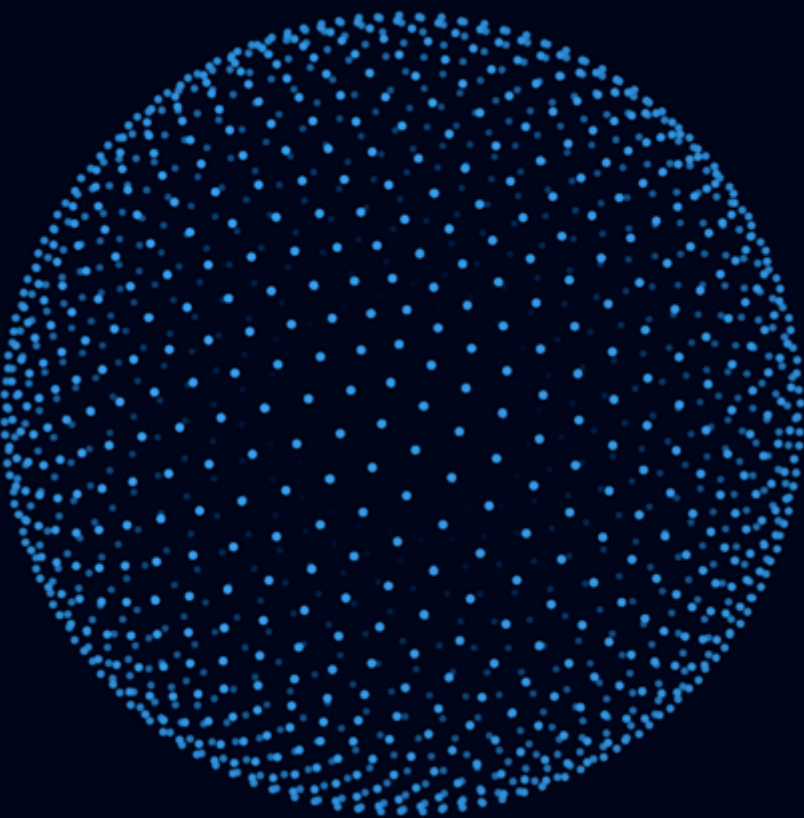
Focus

fully on the
eye care
market



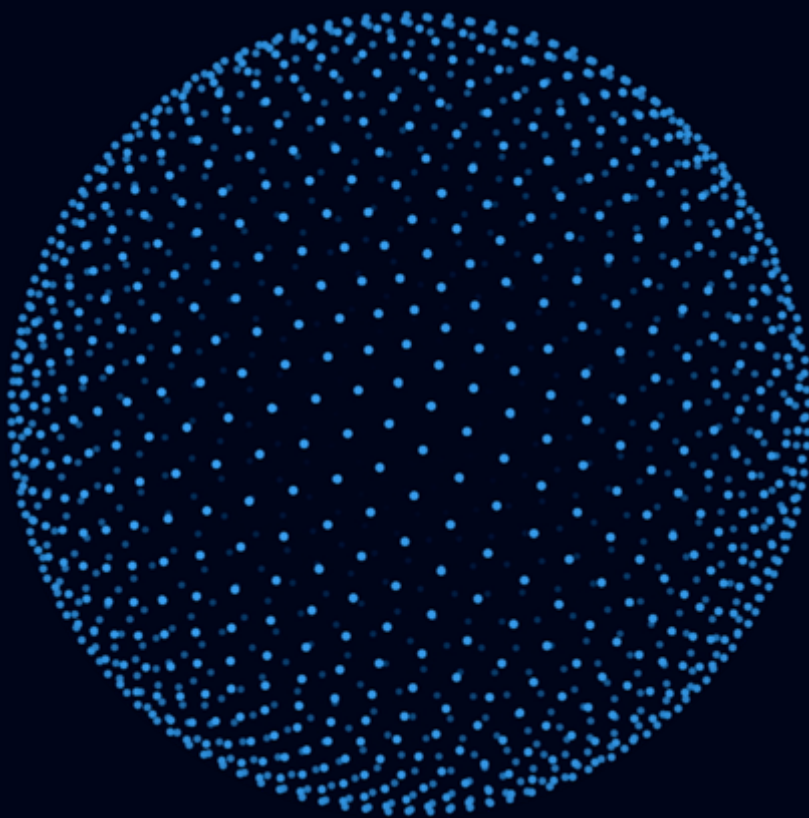
Improve

the quality of
clinical diagnostics
with targeted
product innovations



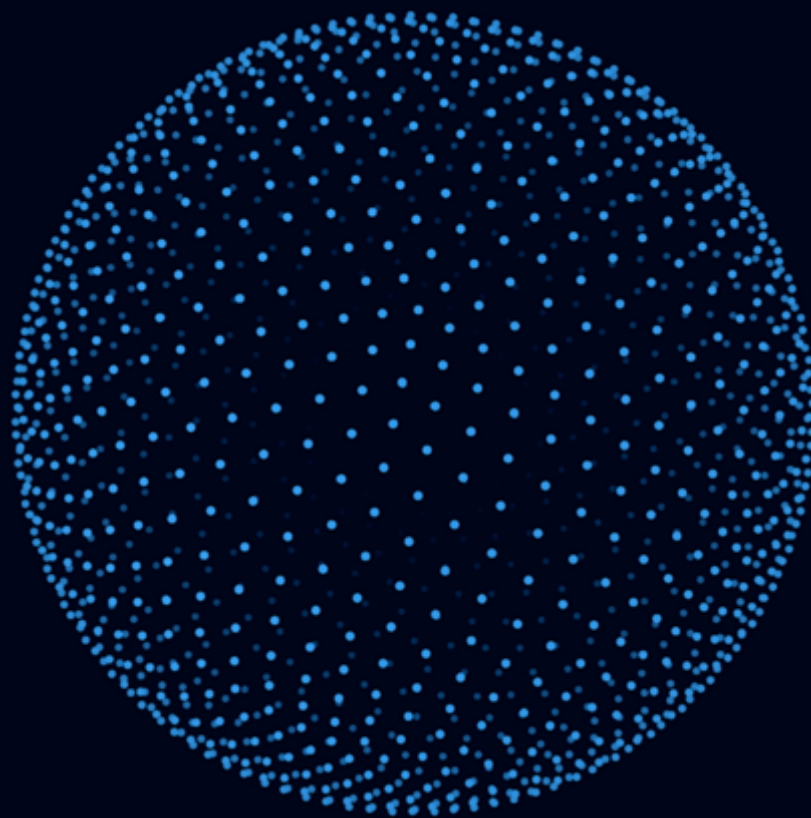
Transform

clinical care
pathways with
eye care focused
software solutions



Build

on iCare brand
awareness and
customer
experience



Continue

strong
profitable
growth

“WE ASPIRE TO KEEP THE
WONDERFUL WORLD VISIBLE FOR ALL”

Thank you!
Questions?