

Form **990-EZ**

Short Form
Return of Organization Exempt From Income Tax

OMB No. 1545-1150

2017

Open to Public Inspection

Under section 501(c), 527, or 4947(a)(1) of the Internal Revenue Code (except private foundations)

- ▶ Do not enter social security numbers on this form as it may be made public.
- ▶ Go to www.irs.gov/Form990EZ for instructions and the latest information.

Department of the Treasury
Internal Revenue Service

A For the 2017 calendar year, or tax year beginning , 2017, and ending , 20

B Check if applicable:

- Address change
- Name change
- Initial return
- Final return/terminated
- Amended return
- Application pending

C Name of organization: **Citizens for Civic Renewal**

Number and street (or P.O. box, if mail is not delivered to street address) Room/suite
664 Enright Ave

City or town, state or province, country, and ZIP or foreign postal code
Cincinnati, OH 45204

D Employer identification number: **31-1542748**

E Telephone number: **513-235-3068**

F Group Exemption Number ▶

G Accounting Method: Cash Accrual Other (specify) ▶

H Check if the organization is not required to attach Schedule B (Form 990, 990-EZ, or 990-PF).

I Website: ▶

J Tax-exempt status (check only one) – 501(c)(3) 501(c) () ◀ (insert no.) 4947(a)(1) or 527

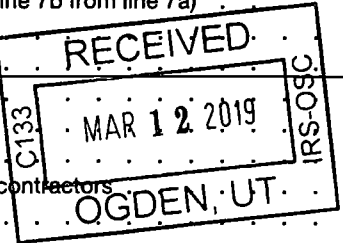
K Form of organization: Corporation Trust Association Other

L Add lines 5b, 6c, and 7b to line 9 to determine gross receipts. If gross receipts are \$200,000 or more, or if total assets (Part II, column (B) below) are \$500,000 or more, file Form 990 instead of Form 990-EZ ▶ \$

Part I Revenue, Expenses, and Changes in Net Assets or Fund Balances (see the instructions for Part I)

Check if the organization used Schedule O to respond to any question in this Part I

Revenue	1	Contributions, gifts, grants, and similar amounts received	1	325
	2	Program service revenue including government fees and contracts	2	77,380
	3	Membership dues and assessments	3	0
	4	Investment income	4	0
	5a	Gross amount from sale of assets other than inventory	5a	
	5b	Less: cost or other basis and sales expenses	5b	
	5c	Gain or (loss) from sale of assets other than inventory (Subtract line 5b from line 5a)	5c	0
	6	Gaming and fundraising events		
	6a	Gross income from gaming (attach Schedule G if greater than \$15,000)	6a	
6b	Gross income from fundraising events (not including \$ of contributions from fundraising events reported on line 1) (attach Schedule G if the sum of such gross income and contributions exceeds \$15,000)	6b		
6c	Less: direct expenses from gaming and fundraising events	6c		
6d	Net income or (loss) from gaming and fundraising events (add lines 6a and 6b and subtract line 6c)	6d	0	
7a	Gross sales of inventory, less returns and allowances	7a		
7b	Less: cost of goods sold	7b		
7c	Gross profit or (loss) from sales of inventory (Subtract line 7b from line 7a)	7c	0	
8	Other revenue (describe in Schedule O)	8	0	
9	Total revenue. Add lines 1, 2, 3, 4, 5c, 6d, 7c, and 8 ▶	9	77,705	
Expenses	10	Grants and similar amounts paid (list in Schedule O)	10	0
	11	Benefits paid to or for members	11	0
	12	Salaries, other compensation, and employee benefits	12	0
	13	Professional fees and other payments to independent contractors	13	76,395
	14	Occupancy, rent, utilities, and maintenance	14	457
	15	Printing, publications, postage, and shipping	15	0
	16	Other expenses (describe in Schedule O)	16	4,137
17	Total expenses. Add lines 10 through 16 ▶	17	81,539	
Net Assets	18	Excess or (deficit) for the year (Subtract line 17 from line 9)	18	-3,823
	19	Net assets or fund balances at beginning of year (from line 27, column (A)) (must agree with end-of-year figure reported on prior year's return)	19	2,903
	20	Other changes in net assets or fund balances (explain in Schedule O)	20	0
	21	Net assets or fund balances at end of year. Combine lines 18 through 20 ▶	21	-920



SCANNED APR 22 2019 Revenue

P

Part II Balance Sheets (see the instructions for Part II)

Check if the organization used Schedule O to respond to any question in this Part II

	(A) Beginning of year	(B) End of year
22 Cash, savings, and investments	2,903	22 -920
23 Land and buildings	0	23 0
24 Other assets (describe in Schedule O)	0	24 0
25 Total assets	2,903	25 -920
26 Total liabilities (describe in Schedule O)	0	26 0
27 Net assets or fund balances (line 27 of column (B) must agree with line 21)	2,903	27 -920

Part III Statement of Program Service Accomplishments (see the instructions for Part III)

Check if the organization used Schedule O to respond to any question in this Part III

What is the organization's primary exempt purpose? To activate citizens to participate in community life.

Describe the organization's program service accomplishments for each of its three largest program services, as measured by expenses. In a clear and concise manner, describe the services provided, the number of persons benefited, and other relevant information for each program title.

Expenses
(Required for section 501(c)(3) and 501(c)(4) organizations; optional for others.)

28 Public policy deliberation events, citizen-government engagement, leadership training, hosting citizens to understand opposing viewpoints and find common ground around difficult public issues. <u>Working to convene citizens to improve service delivery, assisting citizens in the art of hosting public dialog.</u> (Grants \$) If this amount includes foreign grants, check here <input type="checkbox"/>	28a	81,528
29 _____ _____ (Grants \$) If this amount includes foreign grants, check here <input type="checkbox"/>	29a	
30 _____ _____ (Grants \$) If this amount includes foreign grants, check here <input type="checkbox"/>	30a	
31 Other program services (describe in Schedule O) (Grants \$) If this amount includes foreign grants, check here <input type="checkbox"/>	31a	
32 Total program service expenses (add lines 28a through 31a)	32	81,528

Part IV List of Officers, Directors, Trustees, and Key Employees (list each one even if not compensated—see the instructions for Part IV)

Check if the organization used Schedule O to respond to any question in this Part IV

(a) Name and title	(b) Average hours per week devoted to position	(c) Reportable compensation (Forms W-2/1099-MISC) (if not paid, enter -0-)	(d) Health benefits, contributions to employee benefit plans, and deferred compensation	(e) Estimated amount of other compensation
<u>David Rosenthal</u> President	2	0	0	0
<u>Karen Imbus</u> Secretary	2	0	0	0
<u>Christine Celsor</u> Treasurer	1	0	0	0
<u>Ray Kingsbury</u> Board Member	1	0	0	0
<u>Christian Huelsman</u> Board Member	1	0	0	0
<u>Beth Nagy</u> Board Member	1	0	0	0

Part V Other Information (Note the Schedule A and personal benefit contract statement requirements in the instructions for Part V.) Check if the organization used Schedule O to respond to any question in this Part V

		Yes	No
33 Did the organization engage in any significant activity not previously reported to the IRS? If "Yes," provide a detailed description of each activity in Schedule O	33		✓
34 Were any significant changes made to the organizing or governing documents? If "Yes," attach a conformed copy of the amended documents if they reflect a change to the organization's name. Otherwise, explain the change on Schedule O (see instructions)	34		✓
35a Did the organization have unrelated business gross income of \$1,000 or more during the year from business activities (such as those reported on lines 2, 6a, and 7a, among others)?	35a		✓
b If "Yes" to line 35a, has the organization filed a Form 990-T for the year? If "No," provide an explanation in Schedule O	35b		
c Was the organization a section 501(c)(4), 501(c)(5), or 501(c)(6) organization subject to section 6033(e) notice, reporting, and proxy tax requirements during the year? If "Yes," complete Schedule C, Part III	35c		✓
36 Did the organization undergo a liquidation, dissolution, termination, or significant disposition of net assets during the year? If "Yes," complete applicable parts of Schedule N	36		✓
37a Enter amount of political expenditures, direct or indirect, as described in the instructions ▶ 37a <input type="text" value="0"/>			
b Did the organization file Form 1120-POL for this year?	37b		✓
38a Did the organization borrow from, or make any loans to, any officer, director, trustee, or key employee or were any such loans made in a prior year and still outstanding at the end of the tax year covered by this return?	38a		✓
b If "Yes," complete Schedule L, Part II and enter the total amount involved	38b		
39 Section 501(c)(7) organizations. Enter:			
a Initiation fees and capital contributions included on line 9	39a		
b Gross receipts, included on line 9, for public use of club facilities	39b		
40a Section 501(c)(3) organizations. Enter amount of tax imposed on the organization during the year under: section 4911 ▶ <input type="text" value="0"/> ; section 4912 ▶ <input type="text" value="0"/> ; section 4955 ▶ <input type="text" value="0"/>			
b Section 501(c)(3), 501(c)(4), and 501(c)(29) organizations. Did the organization engage in any section 4958 excess benefit transaction during the year, or did it engage in an excess benefit transaction in a prior year that has not been reported on any of its prior Forms 990 or 990-EZ? If "Yes," complete Schedule L, Part I	40b		✓
c Section 501(c)(3), 501(c)(4), and 501(c)(29) organizations. Enter amount of tax imposed on organization managers or disqualified persons during the year under sections 4912, 4955, and 4958 ▶ <input type="text" value="0"/>			
d Section 501(c)(3), 501(c)(4), and 501(c)(29) organizations. Enter amount of tax on line 40c reimbursed by the organization ▶ <input type="text" value="0"/>			
e All organizations. At any time during the tax year, was the organization a party to a prohibited tax shelter transaction? If "Yes," complete Form 8886-T	40e		✓
41 List the states with which a copy of this return is filed ▶ <u>OH</u>			
42a The organization's books are in care of ▶ <u>Jeff Stec</u> Telephone no. ▶ <u>513-235-3068</u> Located at ▶ <u>664 Enright Ave, Cincinnati, OH</u> ZIP + 4 ▶ <u>45204</u>			
b At any time during the calendar year, did the organization have an interest in or a signature or other authority over a financial account in a foreign country (such as a bank account, securities account, or other financial account)? If "Yes," enter the name of the foreign country: ▶ _____ See the instructions for exceptions and filing requirements for FinCEN Form 114, Report of Foreign Bank and Financial Accounts (FBAR).	42b		✓
c At any time during the calendar year, did the organization maintain an office outside the United States? If "Yes," enter the name of the foreign country: ▶ _____	42c		✓
43 Section 4947(a)(1) nonexempt charitable trusts filing Form 990-EZ in lieu of Form 1041—Check here <input type="checkbox"/> and enter the amount of tax-exempt interest received or accrued during the tax year ▶ 43 <input type="text" value="0"/>			
44a Did the organization maintain any donor advised funds during the year? If "Yes," Form 990 must be completed instead of Form 990-EZ	44a		✓
b Did the organization operate one or more hospital facilities during the year? If "Yes," Form 990 must be completed instead of Form 990-EZ	44b		✓
c Did the organization receive any payments for indoor tanning services during the year?	44c		✓
d If "Yes" to line 44c, has the organization filed a Form 720 to report these payments? If "No," provide an explanation in Schedule O	44d		
45a Did the organization have a controlled entity within the meaning of section 512(b)(13)?	45a		✓
b Did the organization receive any payment from or engage in any transaction with a controlled entity within the meaning of section 512(b)(13)? If "Yes," Form 990 and Schedule R may need to be completed instead of Form 990-EZ (see instructions)	45b		✓

		Yes	No
46 Did the organization engage, directly or indirectly, in political campaign activities on behalf of or in opposition to candidates for public office? If "Yes," complete Schedule C, Part I	46		✓

Part VI Section 501(c)(3) organizations only

All section 501(c)(3) organizations must answer questions 47-49b and 52, and complete the tables for lines 50 and 51.

Check if the organization used Schedule O to respond to any question in this Part VI

		Yes	No
47 Did the organization engage in lobbying activities or have a section 501(h) election in effect during the tax year? If "Yes," complete Schedule C, Part II	47		✓
48 Is the organization a school as described in section 170(b)(1)(A)(ii)? If "Yes," complete Schedule E	48		✓
49a Did the organization make any transfers to an exempt non-charitable related organization?	49a		✓
b If "Yes," was the related organization a section 527 organization?	49b		✓

50 Complete this table for the organization's five highest compensated employees (other than officers, directors, trustees, and key employees) who each received more than \$100,000 of compensation from the organization. If there is none, enter "None."

(a) Name and title of each employee	(b) Average hours per week devoted to position	(c) Reportable compensation (Forms W-2/1099-MISC)	(d) Health benefits, contributions to employee benefit plans, and deferred compensation	(e) Estimated amount of other compensation
None				

f Total number of other employees paid over \$100,000 **0**

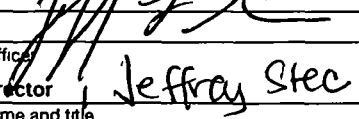
51 Complete this table for the organization's five highest compensated independent contractors who each received more than \$100,000 of compensation from the organization. If there is none, enter "None."

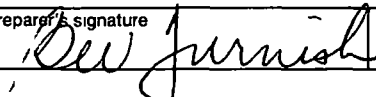
(a) Name and business address of each independent contractor	(b) Type of service	(c) Compensation
None		

d Total number of other independent contractors each receiving over \$100,000 **0**

52 Did the organization complete Schedule A? **Note:** All section 501(c)(3) organizations must attach a completed Schedule A Yes No

Under penalties of perjury, I declare that I have examined this return, including accompanying schedules and statements, and to the best of my knowledge and belief, it is true, correct, and complete. Declaration of preparer (other than officer) is based on all information of which preparer has any knowledge.

Sign Here	Signature of officer  Executive Director, Jeffrey Stec Type or print name and title	Date 3-8-19
------------------	--	-------------

Paid Preparer Use Only	Print/Type preparer's name Bev Furnish	Preparer's signature 	Date 2/28/19	Check <input checked="" type="checkbox"/> if self-employed	PTIN
	Firm's name ▶ Bev Furnish	Firm's EIN ▶			
	Firm's address ▶ 77 Dudley Pike, Edgewood, KY 41017	Phone no. 859-620-0518			

May the IRS discuss this return with the preparer shown above? See instructions Yes No

SCHEDULE A
(Form 990 or 990-EZ)

Department of the Treasury
Internal Revenue Service

Public Charity Status and Public Support

Complete if the organization is a section 501(c)(3) organization or a section 4947(a)(1) nonexempt charitable trust.

▶ Attach to Form 990 or Form 990-EZ.

▶ Go to www.irs.gov/Form990 for instructions and the latest information.

OMB No. 1545-0047

2018

Open to Public Inspection

Name of the organization Citizens for Civic Renewal	Employer identification number 311542748
---	--

Part I Reason for Public Charity Status (All organizations must complete this part.) See instructions.

The organization is not a private foundation because it is: (For lines 1 through 12, check only one box.)

- 1 A church, convention of churches, or association of churches described in **section 170(b)(1)(A)(i)**.
- 2 A school described in **section 170(b)(1)(A)(ii)**. (Attach Schedule E (Form 990 or 990-EZ).)
- 3 A hospital or a cooperative hospital service organization described in **section 170(b)(1)(A)(iii)**.
- 4 A medical research organization operated in conjunction with a hospital described in **section 170(b)(1)(A)(iii)**. Enter the hospital's name, city, and state: _____
- 5 An organization operated for the benefit of a college or university owned or operated by a governmental unit described in **section 170(b)(1)(A)(iv)**. (Complete Part II.)
- 6 A federal, state, or local government or governmental unit described in **section 170(b)(1)(A)(v)**.
- 7 An organization that normally receives a substantial part of its support from a governmental unit or from the general public described in **section 170(b)(1)(A)(vi)**. (Complete Part II.)
- 8 A community trust described in **section 170(b)(1)(A)(vi)**. (Complete Part II.)
- 9 An agricultural research organization described in **section 170(b)(1)(A)(ix)** operated in conjunction with a land-grant college or university or a non-land-grant college of agriculture (see instructions). Enter the name, city, and state of the college or university: _____
- 10 An organization that normally receives: (1) more than 33 1/3% of its support from contributions, membership fees, and gross receipts from activities related to its exempt functions—subject to certain exceptions, and (2) no more than 33 1/3% of its support from gross investment income and unrelated business taxable income (less section 511 tax) from businesses acquired by the organization after June 30, 1975. See **section 509(a)(2)**. (Complete Part III.)
- 11 An organization organized and operated exclusively to test for public safety. See **section 509(a)(4)**.
- 12 An organization organized and operated exclusively for the benefit of, to perform the functions of, or to carry out the purposes of one or more publicly supported organizations described in **section 509(a)(1)** or **section 509(a)(2)**. See **section 509(a)(3)**. Check the box in lines 12a through 12d that describes the type of supporting organization and complete lines 12e, 12f, and 12g.
 - a **Type I.** A supporting organization operated, supervised, or controlled by its supported organization(s), typically by giving the supported organization(s) the power to regularly appoint or elect a majority of the directors or trustees of the supporting organization. **You must complete Part IV, Sections A and B.**
 - b **Type II.** A supporting organization supervised or controlled in connection with its supported organization(s), by having control or management of the supporting organization vested in the same persons that control or manage the supported organization(s). **You must complete Part IV, Sections A and C.**
 - c **Type III functionally integrated.** A supporting organization operated in connection with, and functionally integrated with, its supported organization(s) (see instructions). **You must complete Part IV, Sections A, D, and E.**
 - d **Type III non-functionally integrated.** A supporting organization operated in connection with its supported organization(s) that is not functionally integrated. The organization generally must satisfy a distribution requirement and an attentiveness requirement (see instructions). **You must complete Part IV, Sections A and D, and Part V.**
 - e Check this box if the organization received a written determination from the IRS that it is a Type I, Type II, Type III functionally integrated, or Type III non-functionally integrated supporting organization.
- f Enter the number of supported organizations
- g Provide the following information about the supported organization(s).

(i) Name of supported organization	(ii) EIN	(iii) Type of organization (described on lines 1–10 above (see instructions))	(iv) Is the organization listed in your governing document?		(v) Amount of monetary support (see instructions)	(vi) Amount of other support (see instructions)
			Yes	No		
(A)						
(B)						
(C)						
(D)						
(E)						
Total						

Part II Support Schedule for Organizations Described in Sections 170(b)(1)(A)(iv) and 170(b)(1)(A)(vi)
 (Complete only if you checked the box on line 5, 7, or 8 of Part I or if the organization failed to qualify under Part III. If the organization fails to qualify under the tests listed below, please complete Part III.)

Section A. Public Support

Calendar year (or fiscal year beginning in) ►	(a) 2014	(b) 2015	(c) 2016	(d) 2017	(e) 2018	(f) Total
1 Gifts, grants, contributions, and membership fees received. (Do not include any "unusual grants.")	47,907	60,425	50,170	77,705	72,606	308,813
2 Tax revenues levied for the organization's benefit and either paid to or expended on its behalf	0	0	0	0	0	0
3 The value of services or facilities furnished by a governmental unit to the organization without charge	0	0	0	0	0	0
4 Total. Add lines 1 through 3.	47,907	60,425	50,170	77,705	72,606	308,813
5 The portion of total contributions by each person (other than a governmental unit or publicly supported organization) included on line 1 that exceeds 2% of the amount shown on line 11, column (f).						
6 Public support. Subtract line 5 from line 4						308,813

Section B. Total Support

Calendar year (or fiscal year beginning in) ►	(a) 2014	(b) 2015	(c) 2016	(d) 2017	(e) 2018	(f) Total
7 Amounts from line 4	47,907	60,425	50,170	77,705	72,606	308,813
8 Gross income from interest, dividends, payments received on securities loans, rents, royalties, and income from similar sources	0	0	0	0	0	0
9 Net income from unrelated business activities, whether or not the business is regularly carried on	0	0	0	0	0	0
10 Other income. Do not include gain or loss from the sale of capital assets (Explain in Part VI.)	0	0	0	0	0	0
11 Total support. Add lines 7 through 10						308,813
12 Gross receipts from related activities, etc. (see instructions)					12	
13 First five years. If the Form 990 is for the organization's first, second, third, fourth, or fifth tax year as a section 501(c)(3) organization, check this box and stop here						<input type="checkbox"/>

Section C. Computation of Public Support Percentage

14 Public support percentage for 2018 (line 6, column (f) divided by line 11, column (f))	14	100 %
15 Public support percentage from 2017 Schedule A, Part II, line 14	15	100 %
16a 33 1/3% support test—2018. If the organization did not check the box on line 13, and line 14 is 33 1/3% or more, check this box and stop here. The organization qualifies as a publicly supported organization	<input checked="" type="checkbox"/>	
b 33 1/3% support test—2017. If the organization did not check a box on line 13 or 16a, and line 15 is 33 1/3% or more, check this box and stop here. The organization qualifies as a publicly supported organization	<input type="checkbox"/>	
17a 10%-facts-and-circumstances test—2018. If the organization did not check a box on line 13, 16a, or 16b, and line 14 is 10% or more, and if the organization meets the "facts-and-circumstances" test, check this box and stop here. Explain in Part VI how the organization meets the "facts-and-circumstances" test. The organization qualifies as a publicly supported organization	<input type="checkbox"/>	
b 10%-facts-and-circumstances test—2017. If the organization did not check a box on line 13, 16a, 16b, or 17a, and line 15 is 10% or more, and if the organization meets the "facts-and-circumstances" test, check this box and stop here. Explain in Part VI how the organization meets the "facts-and-circumstances" test. The organization qualifies as a publicly supported organization	<input type="checkbox"/>	
18 Private foundation. If the organization did not check a box on line 13, 16a, 16b, 17a, or 17b, check this box and see instructions	<input type="checkbox"/>	

Part III Support Schedule for Organizations Described in Section 509(a)(2)

(Complete only if you checked the box on line 10 of Part I or if the organization failed to qualify under Part II. If the organization fails to qualify under the tests listed below, please complete Part II.)

Section A. Public Support

Calendar year (or fiscal year beginning in) ▶	(a) 2014	(b) 2015	(c) 2016	(d) 2017	(e) 2018	(f) Total
1 Gifts, grants, contributions, and membership fees received. (Do not include any "unusual grants.")						
2 Gross receipts from admissions, merchandise sold or services performed, or facilities furnished in any activity that is related to the organization's tax-exempt purpose						
3 Gross receipts from activities that are not an unrelated trade or business under section 513						
4 Tax revenues levied for the organization's benefit and either paid to or expended on its behalf						
5 The value of services or facilities furnished by a governmental unit to the organization without charge						
6 Total. Add lines 1 through 5						
7a Amounts included on lines 1, 2, and 3 received from disqualified persons						
b Amounts included on lines 2 and 3 received from other than disqualified persons that exceed the greater of \$5,000 or 1% of the amount on line 13 for the year						
c Add lines 7a and 7b						
8 Public support. (Subtract line 7c from line 6.)						

Section B. Total Support

Calendar year (or fiscal year beginning in) ▶	(a) 2014	(b) 2015	(c) 2016	(d) 2017	(e) 2018	(f) Total
9 Amounts from line 6						
10a Gross income from interest, dividends, payments received on securities loans, rents, royalties, and income from similar sources						
b Unrelated business taxable income (less section 511 taxes) from businesses acquired after June 30, 1975						
c Add lines 10a and 10b						
11 Net income from unrelated business activities not included in line 10b, whether or not the business is regularly carried on						
12 Other income. Do not include gain or loss from the sale of capital assets (Explain in Part VI.)						
13 Total support. (Add lines 9, 10c, 11, and 12.)						
14 First five years. If the Form 990 is for the organization's first, second, third, fourth, or fifth tax year as a section 501(c)(3) organization, check this box and stop here ▶ <input type="checkbox"/>						

Section C. Computation of Public Support Percentage

15 Public support percentage for 2018 (line 8, column (f), divided by line 13, column (f))	15	%
16 Public support percentage from 2017 Schedule A, Part III, line 15	16	%

Section D. Computation of Investment Income Percentage

17 Investment income percentage for 2018 (line 10c, column (f), divided by line 13, column (f))	17	%
18 Investment income percentage from 2017 Schedule A, Part III, line 17	18	%

- 19a 33 1/3% support tests—2018.** If the organization did not check the box on line 14, and line 15 is more than 33 1/3%, and line 17 is not more than 33 1/3%, check this box and **stop here**. The organization qualifies as a publicly supported organization ▶
- b 33 1/3% support tests—2017.** If the organization did not check a box on line 14 or line 19a, and line 16 is more than 33 1/3%, and line 18 is not more than 33 1/3%, check this box and **stop here**. The organization qualifies as a publicly supported organization ▶
- 20 Private foundation.** If the organization did not check a box on line 14, 19a, or 19b, check this box and see instructions ▶

Part IV Supporting Organizations

(Complete only if you checked a box in line 12 on Part I. If you checked 12a of Part I, complete Sections A and B. If you checked 12b of Part I, complete Sections A and C. If you checked 12c of Part I, complete Sections A, D, and E. If you checked 12d of Part I, complete Sections A and D, and complete Part V.)

Section A. All Supporting Organizations

	Yes	No
1 Are all of the organization's supported organizations listed by name in the organization's governing documents? If "No," describe in Part VI how the supported organizations are designated. If designated by class or purpose, describe the designation. If historic and continuing relationship, explain.	<input type="checkbox"/>	<input type="checkbox"/>
2 Did the organization have any supported organization that does not have an IRS determination of status under section 509(a)(1) or (2)? If "Yes," explain in Part VI how the organization determined that the supported organization was described in section 509(a)(1) or (2).	<input type="checkbox"/>	<input type="checkbox"/>
3a Did the organization have a supported organization described in section 501(c)(4), (5), or (6)? If "Yes," answer (b) and (c) below.	<input type="checkbox"/>	<input type="checkbox"/>
b Did the organization confirm that each supported organization qualified under section 501(c)(4), (5), or (6) and satisfied the public support tests under section 509(a)(2)? If "Yes," describe in Part VI when and how the organization made the determination	<input type="checkbox"/>	<input type="checkbox"/>
c Did the organization ensure that all support to such organizations was used exclusively for section 170(c)(2)(B) purposes? If "Yes," explain in Part VI what controls the organization put in place to ensure such use.	<input type="checkbox"/>	<input type="checkbox"/>
4a Was any supported organization not organized in the United States ("foreign supported organization")? If "Yes," and if you checked 12a or 12b in Part I, answer (b) and (c) below.	<input type="checkbox"/>	<input type="checkbox"/>
b Did the organization have ultimate control and discretion in deciding whether to make grants to the foreign supported organization? If "Yes," describe in Part VI how the organization had such control and discretion despite being controlled or supervised by or in connection with its supported organizations.	<input type="checkbox"/>	<input type="checkbox"/>
c Did the organization support any foreign supported organization that does not have an IRS determination under sections 501(c)(3) and 509(a)(1) or (2)? If "Yes," explain in Part VI what controls the organization used to ensure that all support to the foreign supported organization was used exclusively for section 170(c)(2)(B) purposes.	<input type="checkbox"/>	<input type="checkbox"/>
5a Did the organization add, substitute, or remove any supported organizations during the tax year? If "Yes," answer (b) and (c) below (if applicable). Also, provide detail in Part VI , including (i) the names and EIN numbers of the supported organizations added, substituted, or removed; (ii) the reasons for each such action; (iii) the authority under the organization's organizing document authorizing such action; and (iv) how the action was accomplished (such as by amendment to the organizing document).	<input type="checkbox"/>	<input type="checkbox"/>
b Type I or Type II only. Was any added or substituted supported organization part of a class already designated in the organization's organizing document?	<input type="checkbox"/>	<input type="checkbox"/>
c Substitutions only. Was the substitution the result of an event beyond the organization's control?	<input type="checkbox"/>	<input type="checkbox"/>
6 Did the organization provide support (whether in the form of grants or the provision of services or facilities) to anyone other than (i) its supported organizations, (ii) individuals that are part of the charitable class benefited by one or more of its supported organizations, or (iii) other supporting organizations that also support or benefit one or more of the filing organization's supported organizations? If "Yes," provide detail in Part VI .	<input type="checkbox"/>	<input type="checkbox"/>
7 Did the organization provide a grant, loan, compensation, or other similar payment to a substantial contributor (as defined in section 4958(c)(3)(C)), a family member of a substantial contributor, or a 35% controlled entity with regard to a substantial contributor? If "Yes," complete Part I of Schedule L (Form 990 or 990-EZ).	<input type="checkbox"/>	<input type="checkbox"/>
8 Did the organization make a loan to a disqualified person (as defined in section 4958) not described in line 7? If "Yes," complete Part I of Schedule L (Form 990 or 990-EZ).	<input type="checkbox"/>	<input type="checkbox"/>
9a Was the organization controlled directly or indirectly at any time during the tax year by one or more disqualified persons as defined in section 4946 (other than foundation managers and organizations described in section 509(a)(1) or (2))? If "Yes," provide detail in Part VI .	<input type="checkbox"/>	<input type="checkbox"/>
b Did one or more disqualified persons (as defined in line 9a) hold a controlling interest in any entity in which the supporting organization had an interest? If "Yes," provide detail in Part VI .	<input type="checkbox"/>	<input type="checkbox"/>
c Did a disqualified person (as defined in line 9a) have an ownership interest in, or derive any personal benefit from, assets in which the supporting organization also had an interest? If "Yes," provide detail in Part VI .	<input type="checkbox"/>	<input type="checkbox"/>
10a Was the organization subject to the excess business holdings rules of section 4943 because of section 4943(f) (regarding certain Type II supporting organizations, and all Type III non-functionally integrated supporting organizations)? If "Yes," answer 10b below.	<input type="checkbox"/>	<input type="checkbox"/>
b Did the organization have any excess business holdings in the tax year? (Use Schedule C, Form 4720, to determine whether the organization had excess business holdings.)	<input type="checkbox"/>	<input type="checkbox"/>

Part IV Supporting Organizations (continued)

		Yes	No
11	Has the organization accepted a gift or contribution from any of the following persons?		
a	A person who directly or indirectly controls, either alone or together with persons described in (b) and (c) below, the governing body of a supported organization?	11a	
b	A family member of a person described in (a) above?	11b	
c	A 35% controlled entity of a person described in (a) or (b) above? If "Yes" to a, b, or c, provide detail in Part VI .	11c	

Section B. Type I Supporting Organizations

		Yes	No
1	Did the directors, trustees, or membership of one or more supported organizations have the power to regularly appoint or elect at least a majority of the organization's directors or trustees at all times during the tax year? If "No," describe in Part VI how the supported organization(s) effectively operated, supervised, or controlled the organization's activities. If the organization had more than one supported organization, describe how the powers to appoint and/or remove directors or trustees were allocated among the supported organizations and what conditions or restrictions, if any, applied to such powers during the tax year.	1	
2	Did the organization operate for the benefit of any supported organization other than the supported organization(s) that operated, supervised, or controlled the supporting organization? If "Yes," explain in Part VI how providing such benefit carried out the purposes of the supported organization(s) that operated, supervised, or controlled the supporting organization.	2	

Section C. Type II Supporting Organizations

		Yes	No
1	Were a majority of the organization's directors or trustees during the tax year also a majority of the directors or trustees of each of the organization's supported organization(s)? If "No," describe in Part VI how control or management of the supporting organization was vested in the same persons that controlled or managed the supported organization(s).	1	

Section D. All Type III Supporting Organizations

		Yes	No
1	Did the organization provide to each of its supported organizations, by the last day of the fifth month of the organization's tax year, (i) a written notice describing the type and amount of support provided during the prior tax year, (ii) a copy of the Form 990 that was most recently filed as of the date of notification, and (iii) copies of the organization's governing documents in effect on the date of notification, to the extent not previously provided?	1	
2	Were any of the organization's officers, directors, or trustees either (i) appointed or elected by the supported organization(s) or (ii) serving on the governing body of a supported organization? If "No," explain in Part VI how the organization maintained a close and continuous working relationship with the supported organization(s).	2	
3	By reason of the relationship described in (2), did the organization's supported organizations have a significant voice in the organization's investment policies and in directing the use of the organization's income or assets at all times during the tax year? If "Yes," describe in Part VI the role the organization's supported organizations played in this regard.	3	

Section E. Type III Functionally Integrated Supporting Organizations

1	Check the box next to the method that the organization used to satisfy the Integral Part Test during the year (see instructions).		
a	<input type="checkbox"/> The organization satisfied the Activities Test. Complete line 2 below.		
b	<input type="checkbox"/> The organization is the parent of each of its supported organizations. Complete line 3 below.		
c	<input type="checkbox"/> The organization supported a governmental entity. Describe in Part VI how you supported a government entity (see instructions).		
2	Activities Test. Answer (a) and (b) below.		
a	Did substantially all of the organization's activities during the tax year directly further the exempt purposes of the supported organization(s) to which the organization was responsive? If "Yes," then in Part VI identify those supported organizations and explain how these activities directly furthered their exempt purposes, how the organization was responsive to those supported organizations, and how the organization determined that these activities constituted substantially all of its activities.	2a	
b	Did the activities described in (a) constitute activities that, but for the organization's involvement, one or more of the organization's supported organization(s) would have been engaged in? If "Yes," explain in Part VI the reasons for the organization's position that its supported organization(s) would have engaged in these activities but for the organization's involvement.	2b	
3	Parent of Supported Organizations. Answer (a) and (b) below.		
a	Did the organization have the power to regularly appoint or elect a majority of the officers, directors, or trustees of each of the supported organizations? Provide details in Part VI .	3a	
b	Did the organization exercise a substantial degree of direction over the policies, programs, and activities of each of its supported organizations? If "Yes," describe in Part VI the role played by the organization in this regard.	3b	

Part V Type III Non-Functionally Integrated 509(a)(3) Supporting Organizations

1 Check here if the organization satisfied the Integral Part Test as a qualifying trust on Nov. 20, 1970 (explain in Part VI). See instructions. All other Type III non-functionally integrated supporting organizations must complete Sections A through E.

Section A—Adjusted Net Income		(A) Prior Year	(B) Current Year (optional)
1 Net short-term capital gain	1		
2 Recoveries of prior-year distributions	2		
3 Other gross income (see instructions)	3		
4 Add lines 1 through 3.	4		
5 Depreciation and depletion	5		
6 Portion of operating expenses paid or incurred for production or collection of gross income or for management, conservation, or maintenance of property held for production of income (see instructions)	6		
7 Other expenses (see instructions)	7		
8 Adjusted Net Income (subtract lines 5, 6, and 7 from line 4)	8		

Section B—Minimum Asset Amount		(A) Prior Year	(B) Current Year (optional)
1 Aggregate fair market value of all non-exempt-use assets (see instructions for short tax year or assets held for part of year):			
a Average monthly value of securities	1a		
b Average monthly cash balances	1b		
c Fair market value of other non-exempt-use assets	1c		
d Total (add lines 1a, 1b, and 1c)	1d		
e Discount claimed for blockage or other factors (explain in detail in Part VI):			
2 Acquisition indebtedness applicable to non-exempt-use assets	2		
3 Subtract line 2 from line 1d.	3		
4 Cash deemed held for exempt use. Enter 1-1/2% of line 3 (for greater amount, see instructions).	4		
5 Net value of non-exempt-use assets (subtract line 4 from line 3)	5		
6 Multiply line 5 by .035.	6		
7 Recoveries of prior-year distributions	7		
8 Minimum Asset Amount (add line 7 to line 6)	8		

Section C—Distributable Amount			Current Year
1 Adjusted net income for prior year (from Section A, line 8, Column A)	1		
2 Enter 85% of line 1.	2		
3 Minimum asset amount for prior year (from Section B, line 8, Column A)	3		
4 Enter greater of line 2 or line 3.	4		
5 Income tax imposed in prior year	5		
6 Distributable Amount. Subtract line 5 from line 4, unless subject to emergency temporary reduction (see instructions).	6		

7 Check here if the current year is the organization's first as a non-functionally integrated Type III supporting organization (see instructions).

Part V Type III Non-Functionally Integrated 509(a)(3) Supporting Organizations (continued)

Section D—Distributions	Current Year
1 Amounts paid to supported organizations to accomplish exempt purposes	
2 Amounts paid to perform activity that directly furthers exempt purposes of supported organizations, in excess of income from activity	
3 Administrative expenses paid to accomplish exempt purposes of supported organizations	
4 Amounts paid to acquire exempt-use assets	
5 Qualified set-aside amounts (prior IRS approval required)	
6 Other distributions (describe in Part VI). See instructions.	
7 Total annual distributions. Add lines 1 through 6.	
8 Distributions to attentive supported organizations to which the organization is responsive (provide details in Part VI). See instructions.	
9 Distributable amount for 2018 from Section C, line 6	
10 Line 8 amount divided by line 9 amount	

Section E—Distribution Allocations (see instructions)	(i) Excess Distributions	(ii) Underdistributions Pre-2018	(iii) Distributable Amount for 2018
1 Distributable amount for 2018 from Section C, line 6			
2 Underdistributions, if any, for years prior to 2018 (reasonable cause required—explain in Part VI). See instructions.			
3 Excess distributions carryover, if any, to 2018			
a From 2013			
b From 2014			
c From 2015			
d From 2016			
e From 2017			
f Total of lines 3a through e			
g Applied to underdistributions of prior years			
h Applied to 2018 distributable amount			
i Carryover from 2013 not applied (see instructions)			
j Remainder. Subtract lines 3g, 3h, and 3i from 3f.			
4 Distributions for 2018 from Section D, line 7: \$			
a Applied to underdistributions of prior years			
b Applied to 2018 distributable amount			
c Remainder. Subtract lines 4a and 4b from 4.			
5 Remaining underdistributions for years prior to 2018, if any. Subtract lines 3g and 4a from line 2. For result greater than zero, explain in Part VI. See instructions.			
6 Remaining underdistributions for 2018. Subtract lines 3h and 4b from line 1. For result greater than zero, explain in Part VI. See instructions.			
7 Excess distributions carryover to 2019. Add lines 3j and 4c.			
8 Breakdown of line 7:			
a Excess from 2014			
b Excess from 2015			
c Excess from 2016			
d Excess from 2017			
e Excess from 2018			

Part VI **Supplemental Information.** Provide the explanations required by Part II, line 10; Part II, line 17a or 17b; Part III, line 12; Part IV, Section A, lines 1, 2, 3b, 3c, 4b, 4c, 5a, 6, 9a, 9b, 9c, 11a, 11b, and 11c; Part IV, Section B, lines 1 and 2; Part IV, Section C, line 1; Part IV, Section D, lines 2 and 3; Part IV, Section E, lines 1c, 2a, 2b, 3a, and 3b; Part V, line 1; Part V, Section B, line 1e; Part V, Section D, lines 5, 6, and 8; and Part V, Section E, lines 2, 5, and 6. Also complete this part for any additional information. (See instructions.)

Area with horizontal dashed lines for supplemental information.

12