

Form 990



Return of Organization Exempt From Income Tax

OMB No 1545-0047  
2018  
Open to Public Inspection

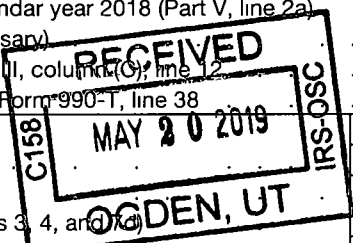
Department of the Treasury  
Internal Revenue Service

Under section 501(c), 527, or 4947(a)(1) of the Internal Revenue Code (except private foundations)  
Do not enter social security numbers on this form as it may be made public.  
Go to www.irs.gov/Form990 for instructions and the latest information.

A For the 2018 calendar year, or tax year beginning, 2018, and ending, 20  
B Check if applicable: Address change, Name change, Initial return, Final return/terminated, Amended return, Application pending  
C Name of organization: United Way of Nodaway County  
D Employer identification number: 51-0195791  
E Telephone number: 660-562-3910  
G Gross receipts \$: 74,788  
H(a) Is this a group return for subordinates? Yes No  
H(b) Are all subordinates included? Yes No  
I Tax-exempt status: 501(c)(3)  
J Website: nodawayunitedway.org  
K Form of organization: Corporation  
L Year of formation: 1993  
M State of legal domicile: MO

Part I Summary

Table with columns for Activities & Governance, Revenue, Expenses, and Net Assets or Fund Balances. Rows include mission statement, membership counts, revenue breakdown, and expenses.



SCANNED AUG 08 2019

Part II Signature Block

Under penalties of perjury, I declare that I have examined this return, including accompanying schedules and statements, and to the best of my knowledge and belief, it is true, correct, and complete. Declaration of preparer (other than officer) is based on all information of which preparer has any knowledge.

Signature of officer: Tiffany Whipple, Date: 5/15/19  
Type or print name and title: Tiffany Whipple, Secretary/Treasurer

Paid Preparer Use Only: Print/Type preparer's name, Preparer's signature, Date, Check if self-employed, PTIN, Firm's name, Firm's EIN, Firm's address, Phone no.

May the IRS discuss this return with the preparer shown above? (see instructions) Yes No

G24

7

**Part III Statement of Program Service Accomplishments**

Check if Schedule O contains a response or note to any line in this Part III

- 1 Briefly describe the organization's mission:  
Fund raising activities for not-for-profit organizations for the following agencies: Big Brothers Big Sisters of Nodaway County, Nodaway County 4-H, Nodaway County Community Building, Nodaway County Senior Center, Health Emergency Lifeline Program, The Ministry Center, Community Services, Education & Recreation for Adults with Disabilities, Girl Scouts of NE KS and NW MO, Pony Express Council of American Boy Scouts, Nodaway County School Nurses and the Pregnancy Crisis Center.
- 2 Did the organization undertake any significant program services during the year which were not listed on the prior Form 990 or 990-EZ?  Yes  No  
If "Yes," describe these new services on Schedule O
- 3 Did the organization cease conducting, or make significant changes in how it conducts, any program services?  Yes  No  
If "Yes," describe these changes on Schedule O
- 4 Describe the organization's program service accomplishments for each of its three largest program services, as measured by expenses Section 501(c)(3) and 501(c)(4) organizations are required to report the amount of grants and allocations to others, the total expenses, and revenue, if any, for each program service reported

4a (Code \_\_\_\_\_) (Expenses \$ 82,816 including grants of \$ \_\_\_\_\_) (Revenue \$ 74,788 )  
Fund raising activities for not-for profit organizations in the amount of \$65,000 to the following agencies: Big Brothers Big Sister of Nodaway County, Nodaway County 4-H Council, Nodaway County School Nurses, Nodaway County Community Building, Nodaway County Senior Center, Health Emergency Lifeline Program, The Ministry Center, Community Services, Inc., Education and Recreation for Adults with Disabilities, Girl Scouts of Northeast Kansas and Northwest Missouri, Pony Express Council Boys Scouts of America and the Pregnancy Crisis Center.

4b (Code \_\_\_\_\_) (Expenses \$ \_\_\_\_\_ including grants of \$ \_\_\_\_\_) (Revenue \$ \_\_\_\_\_ )

4c (Code \_\_\_\_\_) (Expenses \$ \_\_\_\_\_ including grants of \$ \_\_\_\_\_) (Revenue \$ \_\_\_\_\_ )

4d Other program services (Describe in Schedule O.)  
(Expenses \$ \_\_\_\_\_ including grants of \$ \_\_\_\_\_) (Revenue \$ \_\_\_\_\_ )

4e Total program service expenses ▶

B A I O

Part IV Checklist of Required Schedules

Table with 3 columns: Question, Yes, No. Rows 1-21 with checkboxes for 'Yes' and 'No'.

**Part IV Checklist of Required Schedules (continued)**

		Yes	No
22	Did the organization report more than \$5,000 of grants or other assistance to or for domestic individuals on Part IX, column (A), line 2? If "Yes," complete Schedule I, Parts I and III		✓
23	Did the organization answer "Yes" to Part VII, Section A, line 3, 4, or 5 about compensation of the organization's current and former officers, directors, trustees, key employees, and highest compensated employees? If "Yes," complete Schedule J		✓
24a	Did the organization have a tax-exempt bond issue with an outstanding principal amount of more than \$100,000 as of the last day of the year, that was issued after December 31, 2002? If "Yes," answer lines 24b through 24d and complete Schedule K. If "No," go to line 25a		✓
b	Did the organization invest any proceeds of tax-exempt bonds beyond a temporary period exception?		
c	Did the organization maintain an escrow account other than a refunding escrow at any time during the year to defease any tax-exempt bonds?		
d	Did the organization act as an "on behalf of" issuer for bonds outstanding at any time during the year?		
25a	<b>Section 501(c)(3), 501(c)(4), and 501(c)(29) organizations.</b> Did the organization engage in an excess benefit transaction with a disqualified person during the year? If "Yes," complete Schedule L, Part I		✓
b	Is the organization aware that it engaged in an excess benefit transaction with a disqualified person in a prior year, and that the transaction has not been reported on any of the organization's prior Forms 990 or 990-EZ? If "Yes," complete Schedule L, Part I		✓
26	Did the organization report any amount on Part X, line 5, 6, or 22 for receivables from or payables to any current or former officers, directors, trustees, key employees, highest compensated employees, or disqualified persons? If "Yes," complete Schedule L, Part II		✓
27	Did the organization provide a grant or other assistance to an officer, director, trustee, key employee, substantial contributor or employee thereof, a grant selection committee member, or to a 35% controlled entity or family member of any of these persons? If "Yes," complete Schedule L, Part III		✓
28	Was the organization a party to a business transaction with one of the following parties (see Schedule L, Part IV instructions for applicable filing thresholds, conditions, and exceptions).		
a	A current or former officer, director, trustee, or key employee? If "Yes," complete Schedule L, Part IV		✓
b	A family member of a current or former officer, director, trustee, or key employee? If "Yes," complete Schedule L, Part IV		✓
c	An entity of which a current or former officer, director, trustee, or key employee (or a family member thereof) was an officer, director, trustee, or direct or indirect owner? If "Yes," complete Schedule L, Part IV		✓
29	Did the organization receive more than \$25,000 in non-cash contributions? If "Yes," complete Schedule M		✓
30	Did the organization receive contributions of art, historical treasures, or other similar assets, or qualified conservation contributions? If "Yes," complete Schedule M		✓
31	Did the organization liquidate, terminate, or dissolve and cease operations? If "Yes," complete Schedule N, Part I		✓
32	Did the organization sell, exchange, dispose of, or transfer more than 25% of its net assets? If "Yes," complete Schedule N, Part II		✓
33	Did the organization own 100% of an entity disregarded as separate from the organization under Regulations sections 301.7701-2 and 301.7701-3? If "Yes," complete Schedule R, Part I		✓
34	Was the organization related to any tax-exempt or taxable entity? If "Yes," complete Schedule R, Part II, III, or IV, and Part V, line 1		✓
35a	Did the organization have a controlled entity within the meaning of section 512(b)(13)?		✓
b	If "Yes" to line 35a, did the organization receive any payment from or engage in any transaction with a controlled entity within the meaning of section 512(b)(13)? If "Yes," complete Schedule R, Part V, line 2		
36	<b>Section 501(c)(3) organizations.</b> Did the organization make any transfers to an exempt non-charitable related organization? If "Yes," complete Schedule R, Part V, line 2		✓
37	Did the organization conduct more than 5% of its activities through an entity that is not a related organization and that is treated as a partnership for federal income tax purposes? If "Yes," complete Schedule R, Part VI		✓
38	Did the organization complete Schedule O and provide explanations in Schedule O for Part VI, lines 11b and 19? <b>Note.</b> All Form 990 filers are required to complete Schedule O	✓	

**Part V Statements Regarding Other IRS Filings and Tax Compliance**

Check if Schedule O contains a response or note to any line in this Part V

		Yes	No
1a	Enter the number reported in Box 3 of Form 1096. Enter -0- if not applicable		
b	Enter the number of Forms W-2G included in line 1a. Enter -0- if not applicable		
c	Did the organization comply with backup withholding rules for reportable payments to vendors and reportable gaming (gambling) winnings to prize winners?		✓

**Part V** Statements Regarding Other IRS Filings and Tax Compliance (continued)

		Yes	No
2a	Enter the number of employees reported on Form W-3, Transmittal of Wage and Tax Statements, filed for the calendar year ending with or within the year covered by this return		
b	If at least one is reported on line 2a, did the organization file all required federal employment tax returns? <b>Note.</b> If the sum of lines 1a and 2a is greater than 250, you may be required to e-file (see instructions)	2b	
3a	Did the organization have unrelated business gross income of \$1,000 or more during the year?	3a	✓
b	If "Yes," has it filed a Form 990-T for this year? If "No" to line 3b, provide an explanation in Schedule O	3b	
4a	At any time during the calendar year, did the organization have an interest in, or a signature or other authority over, a financial account in a foreign country (such as a bank account, securities account, or other financial account)?	4a	✓
b	If "Yes," enter the name of the foreign country. See instructions for filing requirements for FinCEN Form 114, Report of Foreign Bank and Financial Accounts (FBAR).		
5a	Was the organization a party to a prohibited tax shelter transaction at any time during the tax year?	5a	✓
b	Did any taxable party notify the organization that it was or is a party to a prohibited tax shelter transaction?	5b	✓
c	If "Yes" to line 5a or 5b, did the organization file Form 8886-T?	5c	
6a	Does the organization have annual gross receipts that are normally greater than \$100,000, and did the organization solicit any contributions that were not tax deductible as charitable contributions?	6a	✓
b	If "Yes," did the organization include with every solicitation an express statement that such contributions or gifts were not tax deductible?	6b	
7	<b>Organizations that may receive deductible contributions under section 170(c).</b>		
a	Did the organization receive a payment in excess of \$75 made partly as a contribution and partly for goods and services provided to the payor?	7a	
b	If "Yes," did the organization notify the donor of the value of the goods or services provided?	7b	
c	Did the organization sell, exchange, or otherwise dispose of tangible personal property for which it was required to file Form 8282?	7c	
d	If "Yes," indicate the number of Forms 8282 filed during the year	7d	
e	Did the organization receive any funds, directly or indirectly, to pay premiums on a personal benefit contract?	7e	
f	Did the organization, during the year, pay premiums, directly or indirectly, on a personal benefit contract?	7f	
g	If the organization received a contribution of qualified intellectual property, did the organization file Form 8899 as required?	7g	
h	If the organization received a contribution of cars, boats, airplanes, or other vehicles, did the organization file a Form 1098-C?	7h	
8	<b>Sponsoring organizations maintaining donor advised funds.</b> Did a donor advised fund maintained by the sponsoring organization have excess business holdings at any time during the year?	8	
9	<b>Sponsoring organizations maintaining donor advised funds.</b>		
a	Did the sponsoring organization make any taxable distributions under section 4966?	9a	
b	Did the sponsoring organization make a distribution to a donor, donor advisor, or related person?	9b	
10	<b>Section 501(c)(7) organizations.</b> Enter:		
a	Initiation fees and capital contributions included on Part VIII, line 12	10a	
b	Gross receipts, included on Form 990, Part VIII, line 12, for public use of club facilities	10b	
11	<b>Section 501(c)(12) organizations.</b> Enter:		
a	Gross income from members or shareholders	11a	
b	Gross income from other sources (Do not net amounts due or paid to other sources against amounts due or received from them)	11b	
12a	<b>Section 4947(a)(1) non-exempt charitable trusts.</b> Is the organization filing Form 990 in lieu of Form 1041?	12a	
b	If "Yes," enter the amount of tax-exempt interest received or accrued during the year	12b	
13	<b>Section 501(c)(29) qualified nonprofit health insurance issuers.</b>		
a	Is the organization licensed to issue qualified health plans in more than one state? <b>Note.</b> See the instructions for additional information the organization must report on Schedule O	13a	
b	Enter the amount of reserves the organization is required to maintain by the states in which the organization is licensed to issue qualified health plans	13b	
c	Enter the amount of reserves on hand	13c	
14a	Did the organization receive any payments for indoor tanning services during the tax year?	14a	✓
b	If "Yes," has it filed a Form 720 to report these payments? If "No," provide an explanation in Schedule O	14b	
15	Is the organization subject to the section 4960 tax on payment(s) of more than \$1,000,000 in remuneration or excess parachute payment(s) during the year? If "Yes," see instructions and file Form 720, Schedule N	15	
16	Is the organization an educational institution subject to the section 4968 excise tax on net investment income? If "Yes," complete Form 4720, Schedule O.	16	

**Part VI Governance, Management, and Disclosure** For each "Yes" response to lines 2 through 7b below, and for a "No" response to line 8a, 8b, or 10b below, describe the circumstances, processes, or changes in Schedule O. See instructions.  
 Check if Schedule O contains a response or note to any line in this Part VI

**Section A. Governing Body and Management**

		Yes	No
<b>1a</b>	Enter the number of voting members of the governing body at the end of the tax year . . . . .	<b>10</b>	
	If there are material differences in voting rights among members of the governing body, or if the governing body delegated broad authority to an executive committee or similar committee, explain in Schedule O.		
<b>b</b>	Enter the number of voting members included in line 1a, above, who are independent	<b>9</b>	
<b>2</b>	Did any officer, director, trustee, or key employee have a family relationship or a business relationship with any other officer, director, trustee, or key employee? . . . . .	<b>2</b>	<input checked="" type="checkbox"/>
<b>3</b>	Did the organization delegate control over management duties customarily performed by or under the direct supervision of officers, directors, or trustees, or key employees to a management company or other person? . . . . .	<b>3</b>	<input checked="" type="checkbox"/>
<b>4</b>	Did the organization make any significant changes to its governing documents since the prior Form 990 was filed?	<b>4</b>	<input checked="" type="checkbox"/>
<b>5</b>	Did the organization become aware during the year of a significant diversion of the organization's assets? . . . . .	<b>5</b>	<input checked="" type="checkbox"/>
<b>6</b>	Did the organization have members or stockholders? . . . . .	<b>6</b>	<input checked="" type="checkbox"/>
<b>7a</b>	Did the organization have members, stockholders, or other persons who had the power to elect or appoint one or more members of the governing body? . . . . .	<b>7a</b>	<input checked="" type="checkbox"/>
<b>b</b>	Are any governance decisions of the organization reserved to (or subject to approval by) members, stockholders, or persons other than the governing body? . . . . .	<b>7b</b>	<input checked="" type="checkbox"/>
<b>8</b>	Did the organization contemporaneously document the meetings held or written actions undertaken during the year by the following:		
<b>a</b>	The governing body? . . . . .	<b>8a</b>	<input checked="" type="checkbox"/>
<b>b</b>	Each committee with authority to act on behalf of the governing body? . . . . .	<b>8b</b>	<input checked="" type="checkbox"/>
<b>9</b>	Is there any officer, director, trustee, or key employee listed in Part VII, Section A, who cannot be reached at the organization's mailing address? If "Yes," provide the names and addresses in Schedule O . . . . .	<b>9</b>	<input checked="" type="checkbox"/>

**Section B. Policies** (This Section B requests information about policies not required by the Internal Revenue Code.)

		Yes	No
<b>10a</b>	Did the organization have local chapters, branches, or affiliates? . . . . .	<b>10a</b>	<input checked="" type="checkbox"/>
<b>b</b>	If "Yes," did the organization have written policies and procedures governing the activities of such chapters, affiliates, and branches to ensure their operations are consistent with the organization's exempt purposes?	<b>10b</b>	
<b>11a</b>	Has the organization provided a complete copy of this Form 990 to all members of its governing body before filing the form?	<b>11a</b>	<input checked="" type="checkbox"/>
<b>b</b>	Describe in Schedule O the process, if any, used by the organization to review this Form 990.		
<b>12a</b>	Did the organization have a written conflict of interest policy? If "No," go to line 13 . . . . .	<b>12a</b>	<input checked="" type="checkbox"/>
<b>b</b>	Were officers, directors, or trustees, and key employees required to disclose annually interests that could give rise to conflicts?	<b>12b</b>	
<b>c</b>	Did the organization regularly and consistently monitor and enforce compliance with the policy? If "Yes," describe in Schedule O how this was done . . . . .	<b>12c</b>	
<b>13</b>	Did the organization have a written whistleblower policy? . . . . .	<b>13</b>	<input checked="" type="checkbox"/>
<b>14</b>	Did the organization have a written document retention and destruction policy? . . . . .	<b>14</b>	<input checked="" type="checkbox"/>
<b>15</b>	Did the process for determining compensation of the following persons include a review and approval by independent persons, comparability data, and contemporaneous substantiation of the deliberation and decision?		
<b>a</b>	The organization's CEO, Executive Director, or top management official . . . . .	<b>15a</b>	<input checked="" type="checkbox"/>
<b>b</b>	Other officers or key employees of the organization . . . . .	<b>15b</b>	<input checked="" type="checkbox"/>
	If "Yes" to line 15a or 15b, describe the process in Schedule O (see instructions)		
<b>16a</b>	Did the organization invest in, contribute assets to, or participate in a joint venture or similar arrangement with a taxable entity during the year? . . . . .	<b>16a</b>	<input checked="" type="checkbox"/>
<b>b</b>	If "Yes," did the organization follow a written policy or procedure requiring the organization to evaluate its participation in joint venture arrangements under applicable federal tax law, and take steps to safeguard the organization's exempt status with respect to such arrangements? . . . . .	<b>16b</b>	

**Section C. Disclosure**

- 17** List the states with which a copy of this Form 990 is required to be filed ► **None**
- 18** Section 6104 requires an organization to make its Forms 1023 (1024 or 1024-A if applicable), 990, and 990-T (Section 501(c)(3)s only) available for public inspection. Indicate how you made these available. Check all that apply.  
 Own website     Another's website     Upon request     Other (explain in Schedule O)
- 19** Describe in Schedule O whether (and if so, how) the organization made its governing documents, conflict of interest policy, and financial statements available to the public during the tax year.
- 20** State the name, address, and telephone number of the person who possesses the organization's books and records ►  
**Tiffany Whipple, 114 East South Hills Drive, Maryville, MO 64468 660-562-3910**

**Part VII Compensation of Officers, Directors, Trustees, Key Employees, Highest Compensated Employees, and Independent Contractors**

Check if Schedule O contains a response or note to any line in this Part VII

**Section A. Officers, Directors, Trustees, Key Employees, and Highest Compensated Employees**

**1a** Complete this table for all persons required to be listed. Report compensation for the calendar year ending with or within the organization's tax year

- List all of the organization's **current** officers, directors, trustees (whether individuals or organizations), regardless of amount of compensation. Enter -0- in columns (D), (E), and (F) if no compensation was paid
- List all of the organization's **current** key employees, if any See instructions for definition of "key employee "
- List the organization's five **current** highest compensated employees (other than an officer, director, trustee, or key employee) who received reportable compensation (Box 5 of Form W-2 and/or Box 7 of Form 1099-MISC) of more than \$100,000 from the organization and any related organizations
- List all of the organization's **former** officers, key employees, and highest compensated employees who received more than \$100,000 of reportable compensation from the organization and any related organizations.
- List all of the organization's **former directors or trustees** that received, in the capacity as a former director or trustee of the organization, more than \$10,000 of reportable compensation from the organization and any related organizations

List persons in the following order individual trustees or directors; institutional trustees; officers; key employees; highest compensated employees; and former such persons

Check this box if neither the organization nor any related organization compensated any current officer, director, or trustee

(A) Name and Title	(B) Average hours per week (list any hours for related organizations below dotted line)	(C) Position (do not check more than one box, unless person is both an officer and a director/trustee)						(D) Reportable compensation from the organization (W-2/1099-MISC)	(E) Reportable compensation from related organizations (W-2/1099-MISC)	(F) Estimated amount of other compensation from the organization and related organizations
		Individual trustee or director	Institutional trustee	Officer	Key employee	Highest compensated employee	Former			
(1) Tiffany Whipple, Secretary/Treasurer	6	✓		✓				10,200		
(2) Ben Lipiec, President	2	✓		✓						
(3) Amie Firavich, Director	2	✓								
(4) Ashley Feldhacker, Director	2	✓								
(5) Tim Deen, Director	2	✓								
(6) Larry Wickersham, Director	2	✓								
(7) Kit Meiners, Director	2	✓								
(8) Suzanne VonBehren, Vice-President	2	✓		✓						
(9) Joyce Cronin, Director	2	✓								
(10) Marleen Carmichael, Director	2	✓								
(11)										
(12)										
(13)										
(14)										

**Part VII Section A. Officers, Directors, Trustees, Key Employees, and Highest Compensated Employees** (continued)

(A) Name and title	(B) Average hours per week (list any hours for related organizations below dotted line)	(C) Position (do not check more than one box, unless person is both an officer and a director/trustee)						(D) Reportable compensation from the organization (W-2/1099-MISC)	(E) Reportable compensation from related organizations (W-2/1099-MISC)	(F) Estimated amount of other compensation from the organization and related organizations
		Individual trustee or director	Institutional trustee	Officer	Key employee	Highest compensated employee	Former			
(15)										
(16)										
(17)										
(18)										
(19)										
(20)										
(21)										
(22)										
(23)										
(24)										
(25)										
<b>1b Sub-total</b>							10,200			
<b>c Total from continuation sheets to Part VII, Section A</b>							10,200			
<b>d Total (add lines 1b and 1c)</b>							10,200			

**2** Total number of individuals (including but not limited to those listed above) who received more than \$100,000 of reportable compensation from the organization **0**

	Yes	No
<b>3</b> Did the organization list any <b>former</b> officer, director, or trustee, key employee, or highest compensated employee on line 1a? <i>If "Yes," complete Schedule J for such individual</i>		✓
<b>4</b> For any individual listed on line 1a, is the sum of reportable compensation and other compensation from the organization and related organizations greater than \$150,000? <i>If "Yes," complete Schedule J for such individual</i>		✓
<b>5</b> Did any person listed on line 1a receive or accrue compensation from any unrelated organization or individual for services rendered to the organization? <i>If "Yes," complete Schedule J for such person</i>		✓

**Section B. Independent Contractors**

**1** Complete this table for your five highest compensated independent contractors that received more than \$100,000 of compensation from the organization Report compensation for the calendar year ending with or within the organization's tax year

(A) Name and business address	(B) Description of services	(C) Compensation

**2** Total number of independent contractors (including but not limited to those listed above) who received more than \$100,000 of compensation from the organization



**Part VIII Statement of Revenue**

Check if Schedule O contains a response or note to any line in this Part VIII

			(A) Total revenue	(B) Related or exempt function revenue	(C) Unrelated business revenue	(D) Revenue excluded from tax under sections 512-514
<b>Contributions, Gifts, Grants and Other Similar Amounts</b>	<b>1a</b> Federated campaigns	<b>1a</b>				
	<b>b</b> Membership dues . . . . .	<b>1b</b>				
	<b>c</b> Fundraising events . . . . .	<b>1c</b>				
	<b>d</b> Related organizations . . . . .	<b>1d</b>				
	<b>e</b> Government grants (contributions)	<b>1e</b>				
	<b>f</b> All other contributions, gifts, grants, and similar amounts not included above	<b>1f</b>	60,288			
	<b>g</b> Noncash contributions included in lines 1a-1f \$					
	<b>h Total.</b> Add lines 1a-1f . . . . . ▶		60,288			
<b>Program Service Revenue</b>			<b>Business Code</b>			
	<b>2a</b> . . . . .					
	<b>b</b> . . . . .					
	<b>c</b> . . . . .					
	<b>d</b> . . . . .					
	<b>e</b> . . . . .					
	<b>f</b> All other program service revenue					
<b>g Total.</b> Add lines 2a-2f . . . . . ▶						
<b>Other Revenue</b>	<b>3</b> Investment income (including dividends, interest, and other similar amounts) . . . . . ▶		14,500	14,500		
	<b>4</b> Income from investment of tax-exempt bond proceeds ▶					
	<b>5</b> Royalties . . . . . ▶					
	<b>6a</b> Gross rents	(i) Real	(ii) Personal			
	<b>b</b> Less rental expenses					
	<b>c</b> Rental income or (loss)					
	<b>d</b> Net rental income or (loss) . . . . . ▶					
	<b>7a</b> Gross amount from sales of assets other than inventory	(i) Securities	(ii) Other			
	<b>b</b> Less cost or other basis and sales expenses . . . . .					
	<b>c</b> Gain or (loss) . . . . .					
	<b>d</b> Net gain or (loss) . . . . . ▶					
	<b>8a</b> Gross income from fundraising events (not including \$ of contributions reported on line 1c) See Part IV, line 18 . . . . .	<b>a</b>				
	<b>b</b> Less direct expenses . . . . .	<b>b</b>				
	<b>c</b> Net income or (loss) from fundraising events ▶					
	<b>9a</b> Gross income from gaming activities. See Part IV, line 19 . . . . .	<b>a</b>				
	<b>b</b> Less direct expenses . . . . .	<b>b</b>				
	<b>c</b> Net income or (loss) from gaming activities ▶					
<b>10a</b> Gross sales of inventory, less returns and allowances . . . . .	<b>a</b>					
<b>b</b> Less cost of goods sold . . . . .	<b>b</b>					
<b>c</b> Net income or (loss) from sales of inventory . ▶						
Miscellaneous Revenue		<b>Business Code</b>				
<b>11a</b> . . . . .						
<b>b</b> . . . . .						
<b>c</b> . . . . .						
<b>d</b> All other revenue . . . . .						
<b>e Total.</b> Add lines 11a-11d . . . . . ▶						
<b>12 Total revenue.</b> See instructions . . . . . ▶			74,788	14,500		

**Part IX Statement of Functional Expenses**

Section 501(c)(3) and 501(c)(4) organizations must complete all columns. All other organizations must complete column (A).

Check if Schedule O contains a response or note to any line in this Part IX

**Do not include amounts reported on lines 6b, 7b, 8b, 9b, and 10b of Part VIII.**

	(A) Total expenses	(B) Program service expenses	(C) Management and general expenses	(D) Fundraising expenses
<b>1</b> Grants and other assistance to domestic organizations and domestic governments See Part IV, line 21 . . . . .				
<b>2</b> Grants and other assistance to domestic individuals See Part IV, line 22 . . . . .				
<b>3</b> Grants and other assistance to foreign organizations, foreign governments, and foreign individuals See Part IV, lines 15 and 16 . . . . .				
<b>4</b> Benefits paid to or for members . . . . .				
<b>5</b> Compensation of current officers, directors, trustees, and key employees . . . . .				
<b>6</b> Compensation not included above, to disqualified persons (as defined under section 4958(f)(1)) and persons described in section 4958(c)(3)(B) . . . . .				
<b>7</b> Other salaries and wages . . . . .				
<b>8</b> Pension plan accruals and contributions (include section 401(k) and 403(b) employer contributions) . . . . .				
<b>9</b> Other employee benefits . . . . .				
<b>10</b> Payroll taxes . . . . .				
<b>11</b> Fees for services (non-employees):				
<b>a</b> Management . . . . .				
<b>b</b> Legal . . . . .				
<b>c</b> Accounting . . . . .				
<b>d</b> Lobbying . . . . .				
<b>e</b> Professional fundraising services. See Part IV, line 17 . . . . .				
<b>f</b> Investment management fees . . . . .	1,203			
<b>g</b> Other. (If line 11g amount exceeds 10% of line 25, column (A) amount, list line 11g expenses on Schedule O.) . . . . .				
<b>12</b> Advertising and promotion . . . . .	3,924	3,879		
<b>13</b> Office expenses . . . . .	856			
<b>14</b> Information technology . . . . .				
<b>15</b> Royalties . . . . .				
<b>16</b> Occupancy . . . . .				
<b>17</b> Travel . . . . .				
<b>18</b> Payments of travel or entertainment expenses for any federal, state, or local public officials . . . . .				
<b>19</b> Conferences, conventions, and meetings . . . . .				
<b>20</b> Interest . . . . .				
<b>21</b> Payments to affiliates . . . . .	1,635			
<b>22</b> Depreciation, depletion, and amortization . . . . .				
<b>23</b> Insurance . . . . .				
<b>24</b> Other expenses. Itemize expenses not covered above (List miscellaneous expenses in line 24e. If line 24e amount exceeds 10% of line 25, column (A) amount, list line 24e expenses on Schedule O )				
<b>a</b> Contract Labor . . . . .	10,200	10,200		
<b>b</b> Agency Allocations . . . . .	65,000	65,000		
<b>c</b> . . . . .				
<b>d</b> . . . . .				
<b>e</b> All other expenses . . . . .				
<b>25</b> Total functional expenses. Add lines 1 through 24e . . . . .	82,818	79,079		
<b>26</b> Joint costs. Complete this line only if the organization reported in column (B) joint costs from a combined educational campaign and fundraising solicitation. Check here <input type="checkbox"/> if following SOP 98-2 (ASC 958-720) . . . . .				

**Part X Balance Sheet**

Check if Schedule O contains a response or note to any line in this Part X

		(A)		(B)
		Beginning of year		End of year
<b>Assets</b>	<b>1</b> Cash—non-interest-bearing . . . . .	15,456	<b>1</b>	8,675
	<b>2</b> Savings and temporary cash investments . . . . .	7,339	<b>2</b>	7,403
	<b>3</b> Pledges and grants receivable, net . . . . .	3,173	<b>3</b>	8,022
	<b>4</b> Accounts receivable, net . . . . .		<b>4</b>	
	<b>5</b> Loans and other receivables from current and former officers, directors, trustees, key employees, and highest compensated employees. Complete Part II of Schedule L . . . . .		<b>5</b>	
	<b>6</b> Loans and other receivables from other disqualified persons (as defined under section 4958(f)(1)), persons described in section 4958(c)(3)(B), and contributing employers and sponsoring organizations of section 501(c)(9) voluntary employees' beneficiary organizations (see instructions). Complete Part II of Schedule L . . . . .		<b>6</b>	
	<b>7</b> Notes and loans receivable, net . . . . .		<b>7</b>	
	<b>8</b> Inventories for sale or use . . . . .		<b>8</b>	
	<b>9</b> Prepaid expenses and deferred charges . . . . .		<b>9</b>	
	<b>10a</b> Land, buildings, and equipment: cost or other basis. Complete Part VI of Schedule D . . . . .	<b>10a</b>		
	<b>b</b> Less: accumulated depreciation . . . . .	<b>10b</b>	<b>10c</b>	
	<b>11</b> Investments—publicly traded securities . . . . .	371,760	<b>11</b>	331,677
	<b>12</b> Investments—other securities. See Part IV, line 11 . . . . .		<b>12</b>	
	<b>13</b> Investments—program-related. See Part IV, line 11 . . . . .		<b>13</b>	
	<b>14</b> Intangible assets . . . . .		<b>14</b>	
	<b>15</b> Other assets. See Part IV, line 11 . . . . .		<b>15</b>	
<b>16 Total assets.</b> Add lines 1 through 15 (must equal line 34) . . . . .	397,728	<b>16</b>	355,777	
<b>Liabilities</b>	<b>17</b> Accounts payable and accrued expenses . . . . .		<b>17</b>	
	<b>18</b> Grants payable . . . . .	83,500	<b>18</b>	65,000
	<b>19</b> Deferred revenue . . . . .		<b>19</b>	
	<b>20</b> Tax-exempt bond liabilities . . . . .		<b>20</b>	
	<b>21</b> Escrow or custodial account liability. Complete Part IV of Schedule D . . . . .		<b>21</b>	
	<b>22</b> Loans and other payables to current and former officers, directors, trustees, key employees, highest compensated employees, and disqualified persons. Complete Part II of Schedule L . . . . .		<b>22</b>	
	<b>23</b> Secured mortgages and notes payable to unrelated third parties . . . . .		<b>23</b>	
	<b>24</b> Unsecured notes and loans payable to unrelated third parties . . . . .		<b>24</b>	
	<b>25</b> Other liabilities (including federal income tax, payables to related third parties, and other liabilities not included on lines 17–24). Complete Part X of Schedule D . . . . .		<b>25</b>	
	<b>26 Total liabilities.</b> Add lines 17 through 25 . . . . .	83,500	<b>26</b>	65,000
<b>Net Assets or Fund Balances</b>	<b>Organizations that follow SFAS 117 (ASC 958), check here <input type="checkbox"/> and complete lines 27 through 29, and lines 33 and 34.</b>			
	<b>27</b> Unrestricted net assets . . . . .	422,515	<b>27</b>	389,529
	<b>28</b> Temporarily restricted net assets . . . . .		<b>28</b>	
	<b>29</b> Permanently restricted net assets . . . . .		<b>29</b>	
	<b>Organizations that do not follow SFAS 117 (ASC 958), check here <input type="checkbox"/> and complete lines 30 through 34.</b>			
	<b>30</b> Capital stock or trust principal, or current funds . . . . .		<b>30</b>	
	<b>31</b> Paid-in or capital surplus, or land, building, or equipment fund . . . . .		<b>31</b>	
	<b>32</b> Retained earnings, endowment, accumulated income, or other funds . . . . .		<b>32</b>	
	<b>33</b> Total net assets or fund balances . . . . .	422,515	<b>33</b>	389,529
<b>34</b> Total liabilities and net assets/fund balances . . . . .	397,778	<b>34</b>	355,777	

**Part XI Reconciliation of Net Assets**

Check if Schedule O contains a response or note to any line in this Part XI

<b>1</b>	Total revenue (must equal Part VIII, column (A), line 12)	<b>1</b>	<b>74,778</b>
<b>2</b>	Total expenses (must equal Part IX, column (A), line 25)	<b>2</b>	<b>82,818</b>
<b>3</b>	Revenue less expenses. Subtract line 2 from line 1	<b>3</b>	<b>-8,030</b>
<b>4</b>	Net assets or fund balances at beginning of year (must equal Part X, line 33, column (A))	<b>4</b>	<b>422,515</b>
<b>5</b>	Net unrealized gains (losses) on investments	<b>5</b>	
<b>6</b>	Donated services and use of facilities	<b>6</b>	
<b>7</b>	Investment expenses	<b>7</b>	
<b>8</b>	Prior period adjustments	<b>8</b>	
<b>9</b>	Other changes in net assets or fund balances (explain in Schedule O)	<b>9</b>	
<b>10</b>	Net assets or fund balances at end of year. Combine lines 3 through 9 (must equal Part X, line 33, column (B))	<b>10</b>	<b>389,529</b>

**Part XII Financial Statements and Reporting**

Check if Schedule O contains a response or note to any line in this Part XII

		Yes	No
<b>1</b>	Accounting method used to prepare the Form 990. <input type="checkbox"/> Cash <input checked="" type="checkbox"/> Accrual <input type="checkbox"/> Other _____ If the organization changed its method of accounting from a prior year or checked "Other," explain in Schedule O.		
<b>2a</b>	Were the organization's financial statements compiled or reviewed by an independent accountant? If "Yes," check a box below to indicate whether the financial statements for the year were compiled or reviewed on a separate basis, consolidated basis, or both <input type="checkbox"/> Separate basis <input type="checkbox"/> Consolidated basis <input type="checkbox"/> Both consolidated and separate basis		✓
<b>b</b>	Were the organization's financial statements audited by an independent accountant? If "Yes," check a box below to indicate whether the financial statements for the year were audited on a separate basis, consolidated basis, or both <input type="checkbox"/> Separate basis <input type="checkbox"/> Consolidated basis <input type="checkbox"/> Both consolidated and separate basis		✓
<b>c</b>	If "Yes" to line 2a or 2b, does the organization have a committee that assumes responsibility for oversight of the audit, review, or compilation of its financial statements and selection of an independent accountant? If the organization changed either its oversight process or selection process during the tax year, explain in Schedule O.		
<b>3a</b>	As a result of a federal award, was the organization required to undergo an audit or audits as set forth in the Single Audit Act and OMB Circular A-133?		
<b>b</b>	If "Yes," did the organization undergo the required audit or audits? If the organization did not undergo the required audit or audits, explain why in Schedule O and describe any steps taken to undergo such audits		

**SCHEDULE A**  
**(Form 990 or 990-EZ)**

Department of the Treasury  
Internal Revenue Service

**Public Charity Status and Public Support**

Complete if the organization is a section 501(c)(3) organization or a section 4947(a)(1) nonexempt charitable trust.

▶ Attach to Form 990 or Form 990-EZ.

▶ Go to [www.irs.gov/Form990](http://www.irs.gov/Form990) for instructions and the latest information.

OMB No 1545-0047

**2018**

**Open to Public Inspection**

Name of the organization United Way of Nodaway County	Employer identification number 51-0195791
--	--

**Part I Reason for Public Charity Status** (All organizations must complete this part.) See instructions.

- The organization is not a private foundation because it is (For lines 1 through 12, check only one box)
- 1  A church, convention of churches, or association of churches described in **section 170(b)(1)(A)(i)**.
  - 2  A school described in **section 170(b)(1)(A)(ii)**. (Attach Schedule E (Form 990 or 990-EZ).)
  - 3  A hospital or a cooperative hospital service organization described in **section 170(b)(1)(A)(iii)**.
  - 4  A medical research organization operated in conjunction with a hospital described in **section 170(b)(1)(A)(iii)**. Enter the hospital's name, city, and state: \_\_\_\_\_
  - 5  An organization operated for the benefit of a college or university owned or operated by a governmental unit described in **section 170(b)(1)(A)(iv)**. (Complete Part II.)
  - 6  A federal, state, or local government or governmental unit described in **section 170(b)(1)(A)(v)**.
  - 7  An organization that normally receives a substantial part of its support from a governmental unit or from the general public described in **section 170(b)(1)(A)(vi)**. (Complete Part II.)
  - 8  A community trust described in **section 170(b)(1)(A)(vi)**. (Complete Part II.)
  - 9  An agricultural research organization described in **section 170(b)(1)(A)(ix)** operated in conjunction with a land-grant college or university or a non-land-grant college of agriculture (see instructions) Enter the name, city, and state of the college or university: \_\_\_\_\_
  - 10  An organization that normally receives (1) more than 33 1/3% of its support from contributions, membership fees, and gross receipts from activities related to its exempt functions—subject to certain exceptions, and (2) no more than 33 1/3% of its support from gross investment income and unrelated business taxable income (less section 511 tax) from businesses acquired by the organization after June 30, 1975 See **section 509(a)(2)**. (Complete Part III.)
  - 11  An organization organized and operated exclusively to test for public safety. See **section 509(a)(4)**.
  - 12  An organization organized and operated exclusively for the benefit of, to perform the functions of, or to carry out the purposes of one or more publicly supported organizations described in **section 509(a)(1)** or **section 509(a)(2)**. See **section 509(a)(3)**. Check the box in lines 12a through 12d that describes the type of supporting organization and complete lines 12e, 12f, and 12g
    - a  **Type I.** A supporting organization operated, supervised, or controlled by its supported organization(s), typically by giving the supported organization(s) the power to regularly appoint or elect a majority of the directors or trustees of the supporting organization **You must complete Part IV, Sections A and B.**
    - b  **Type II.** A supporting organization supervised or controlled in connection with its supported organization(s), by having control or management of the supporting organization vested in the same persons that control or manage the supported organization(s). **You must complete Part IV, Sections A and C.**
    - c  **Type III functionally integrated.** A supporting organization operated in connection with, and functionally integrated with, its supported organization(s) (see instructions). **You must complete Part IV, Sections A, D, and E.**
    - d  **Type III non-functionally integrated.** A supporting organization operated in connection with its supported organization(s) that is not functionally integrated. The organization generally must satisfy a distribution requirement and an attentiveness requirement (see instructions) **You must complete Part IV, Sections A and D, and Part V.**
    - e  Check this box if the organization received a written determination from the IRS that it is a Type I, Type II, Type III functionally integrated, or Type III non-functionally integrated supporting organization
    - f Enter the number of supported organizations \_\_\_\_\_
    - g Provide the following information about the supported organization(s)

(i) Name of supported organization	(ii) EIN	(iii) Type of organization (described on lines 1–10 above (see instructions))	(iv) Is the organization listed in your governing document?		(v) Amount of monetary support (see instructions)	(vi) Amount of other support (see instructions)
			Yes	No		
(A)						
(B)						
(C)						
(D)						
(E)						
<b>Total</b>						

**Part II Support Schedule for Organizations Described in Sections 170(b)(1)(A)(iv) and 170(b)(1)(A)(vi)**  
 (Complete only if you checked the box on line 5, 7, or 8 of Part I or if the organization failed to qualify under Part III. If the organization fails to qualify under the tests listed below, please complete Part III.)

**Section A. Public Support**

Calendar year (or fiscal year beginning in) ▶	(a) 2014	(b) 2015	(c) 2016	(d) 2017	(e) 2018	(f) Total
<b>1</b> Gifts, grants, contributions, and membership fees received (Do not include any "unusual grants") . . . . .	84,843	115,528	66,270	66,522	60,288	393,451
<b>2</b> Tax revenues levied for the organization's benefit and either paid to or expended on its behalf . . . . .						
<b>3</b> The value of services or facilities furnished by a governmental unit to the organization without charge . . . . .	84,843	115,528	66,270	66,522	60,288	393,451
<b>4 Total.</b> Add lines 1 through 3 . . . . .						
<b>5</b> The portion of total contributions by each person (other than a governmental unit or publicly supported organization) included on line 1 that exceeds 2% of the amount shown on line 11, column (f) . . . . .						
<b>6 Public support.</b> Subtract line 5 from line 4 . . . . .						393,451

**Section B. Total Support**

Calendar year (or fiscal year beginning in) ▶	(a) 2014	(b) 2015	(c) 2016	(d) 2017	(e) 2018	(f) Total
<b>7</b> Amounts from line 4 . . . . .	84,843	115,582	66,270	66,522	60,288	393,451
<b>8</b> Gross income from interest, dividends, payments received on securities loans, rents, royalties, and income from similar sources . . . . .	18,120			18,500	14,500	51,120
<b>9</b> Net income from unrelated business activities, whether or not the business is regularly carried on . . . . .						
<b>10</b> Other income Do not include gain or loss from the sale of capital assets (Explain in Part VI.) . . . . .						
<b>11 Total support.</b> Add lines 7 through 10 . . . . .						444,571

**12** Gross receipts from related activities, etc. (see instructions) . . . . . **12** \_\_\_\_\_

**13 First five years.** If the Form 990 is for the organization's first, second, third, fourth, or fifth tax year as a section 501(c)(3) organization, check this box and **stop here** . . . . .

**Section C. Computation of Public Support Percentage**

<b>14</b> Public support percentage for 2018 (line 6, column (f) divided by line 11, column (f)) . . . . .	<b>14</b>	89 %
<b>15</b> Public support percentage from 2017 Schedule A, Part II, line 14 . . . . .	<b>15</b>	92 %
<b>16a 33 1/3% support test—2018.</b> If the organization did not check the box on line 13, and line 14 is 33 1/3% or more, check this box and <b>stop here.</b> The organization qualifies as a publicly supported organization . . . . . <input checked="" type="checkbox"/>		
<b>b 33 1/3% support test—2017.</b> If the organization did not check a box on line 13 or 16a, and line 15 is 33 1/3% or more, check this box and <b>stop here.</b> The organization qualifies as a publicly supported organization . . . . . <input type="checkbox"/>		
<b>17a 10%-facts-and-circumstances test—2018.</b> If the organization did not check a box on line 13, 16a, or 16b, and line 14 is 10% or more, and if the organization meets the "facts-and-circumstances" test, check this box and <b>stop here.</b> Explain in Part VI how the organization meets the "facts-and-circumstances" test. The organization qualifies as a publicly supported organization . . . . . <input type="checkbox"/>		
<b>b 10%-facts-and-circumstances test—2017.</b> If the organization did not check a box on line 13, 16a, 16b, or 17a, and line 15 is 10% or more, and if the organization meets the "facts-and-circumstances" test, check this box and <b>stop here.</b> Explain in Part VI how the organization meets the "facts-and-circumstances" test. The organization qualifies as a publicly supported organization . . . . . <input type="checkbox"/>		
<b>18 Private foundation.</b> If the organization did not check a box on line 13, 16a, 16b, 17a, or 17b, check this box and see instructions . . . . . <input type="checkbox"/>		

**Part III Support Schedule for Organizations Described in Section 509(a)(2)**

(Complete only if you checked the box on line 10 of Part I or if the organization failed to qualify under Part II. If the organization fails to qualify under the tests listed below, please complete Part II.)

**Section A. Public Support**

Calendar year (or fiscal year beginning in) ►	(a) 2014	(b) 2015	(c) 2016	(d) 2017	(e) 2018	(f) Total
<b>1</b> Gifts, grants, contributions, and membership fees received (Do not include any "unusual grants.")						
<b>2</b> Gross receipts from admissions, merchandise sold or services performed, or facilities furnished in any activity that is related to the organization's tax-exempt purpose						
<b>3</b> Gross receipts from activities that are not an unrelated trade or business under section 513						
<b>4</b> Tax revenues levied for the organization's benefit and either paid to or expended on its behalf						
<b>5</b> The value of services or facilities furnished by a governmental unit to the organization without charge						
<b>6 Total.</b> Add lines 1 through 5						
<b>7a</b> Amounts included on lines 1, 2, and 3 received from disqualified persons						
<b>b</b> Amounts included on lines 2 and 3 received from other than disqualified persons that exceed the greater of \$5,000 or 1% of the amount on line 13 for the year						
<b>c</b> Add lines 7a and 7b						
<b>8 Public support.</b> (Subtract line 7c from line 6.)						

**Section B. Total Support**

Calendar year (or fiscal year beginning in) ►	(a) 2014	(b) 2015	(c) 2016	(d) 2017	(e) 2018	(f) Total
<b>9</b> Amounts from line 6						
<b>10a</b> Gross income from interest, dividends, payments received on securities loans, rents, royalties, and income from similar sources						
<b>b</b> Unrelated business taxable income (less section 511 taxes) from businesses acquired after June 30, 1975						
<b>c</b> Add lines 10a and 10b						
<b>11</b> Net income from unrelated business activities not included in line 10b, whether or not the business is regularly carried on						
<b>12</b> Other income Do not include gain or loss from the sale of capital assets (Explain in Part VI.)						
<b>13 Total support.</b> (Add lines 9, 10c, 11, and 12)						
<b>14 First five years.</b> If the Form 990 is for the organization's first, second, third, fourth, or fifth tax year as a section 501(c)(3) organization, check this box and <b>stop here</b> <input type="checkbox"/>						

**Section C. Computation of Public Support Percentage**

<b>15</b> Public support percentage for 2018 (line 8, column (f), divided by line 13, column (f))	<b>15</b>	%
<b>16</b> Public support percentage from 2017 Schedule A, Part III, line 15	<b>16</b>	%

**Section D. Computation of Investment Income Percentage**

<b>17</b> Investment income percentage for 2018 (line 10c, column (f), divided by line 13, column (f))	<b>17</b>	%
<b>18</b> Investment income percentage from 2017 Schedule A, Part III, line 17	<b>18</b>	%

- 19a 33 1/3% support tests—2018.** If the organization did not check the box on line 14, and line 15 is more than 33 1/3%, and line 17 is not more than 33 1/3%, check this box and **stop here**. The organization qualifies as a publicly supported organization
- b 33 1/3% support tests—2017.** If the organization did not check a box on line 14 or line 19a, and line 16 is more than 33 1/3%, and line 18 is not more than 33 1/3%, check this box and **stop here**. The organization qualifies as a publicly supported organization
- 20 Private foundation.** If the organization did not check a box on line 14, 19a, or 19b, check this box and see instructions

**Part IV Supporting Organizations**

(Complete only if you checked a box in line 12 on Part I. If you checked 12a of Part I, complete Sections A and B. If you checked 12b of Part I, complete Sections A and C. If you checked 12c of Part I, complete Sections A, D, and E. If you checked 12d of Part I, complete Sections A and D, and complete Part V.)

**Section A. All Supporting Organizations**

	Yes	No
1 Are all of the organization's supported organizations listed by name in the organization's governing documents? If "No," describe in <b>Part VI</b> how the supported organizations are designated. If designated by class or purpose, describe the designation. If historic and continuing relationship, explain		
2 Did the organization have any supported organization that does not have an IRS determination of status under section 509(a)(1) or (2)? If "Yes," explain in <b>Part VI</b> how the organization determined that the supported organization was described in section 509(a)(1) or (2)		
3a Did the organization have a supported organization described in section 501(c)(4), (5), or (6)? If "Yes," answer (b) and (c) below		
b Did the organization confirm that each supported organization qualified under section 501(c)(4), (5), or (6) and satisfied the public support tests under section 509(a)(2)? If "Yes," describe in <b>Part VI</b> when and how the organization made the determination		
c Did the organization ensure that all support to such organizations was used exclusively for section 170(c)(2)(B) purposes? If "Yes," explain in <b>Part VI</b> what controls the organization put in place to ensure such use		
4a Was any supported organization not organized in the United States ("foreign supported organization")? If "Yes," and if you checked 12a or 12b in Part I, answer (b) and (c) below.		
b Did the organization have ultimate control and discretion in deciding whether to make grants to the foreign supported organization? If "Yes," describe in <b>Part VI</b> how the organization had such control and discretion despite being controlled or supervised by or in connection with its supported organizations		
c Did the organization support any foreign supported organization that does not have an IRS determination under sections 501(c)(3) and 509(a)(1) or (2)? If "Yes," explain in <b>Part VI</b> what controls the organization used to ensure that all support to the foreign supported organization was used exclusively for section 170(c)(2)(B) purposes		
5a Did the organization add, substitute, or remove any supported organizations during the tax year? If "Yes," answer (b) and (c) below (if applicable). Also, provide detail in <b>Part VI</b> , including (i) the names and EIN numbers of the supported organizations added, substituted, or removed, (ii) the reasons for each such action; (iii) the authority under the organization's organizing document authorizing such action, and (iv) how the action was accomplished (such as by amendment to the organizing document)		
b <b>Type I or Type II only.</b> Was any added or substituted supported organization part of a class already designated in the organization's organizing document?		
c <b>Substitutions only.</b> Was the substitution the result of an event beyond the organization's control?		
6 Did the organization provide support (whether in the form of grants or the provision of services or facilities) to anyone other than (i) its supported organizations, (ii) individuals that are part of the charitable class benefited by one or more of its supported organizations, or (iii) other supporting organizations that also support or benefit one or more of the filing organization's supported organizations? If "Yes," provide detail in <b>Part VI</b> .		
7 Did the organization provide a grant, loan, compensation, or other similar payment to a substantial contributor (as defined in section 4958(c)(3)(C)), a family member of a substantial contributor, or a 35% controlled entity with regard to a substantial contributor? If "Yes," complete Part I of Schedule L (Form 990 or 990-EZ).		
8 Did the organization make a loan to a disqualified person (as defined in section 4958) not described in line 7? If "Yes," complete Part I of Schedule L (Form 990 or 990-EZ)		
9a Was the organization controlled directly or indirectly at any time during the tax year by one or more disqualified persons as defined in section 4946 (other than foundation managers and organizations described in section 509(a)(1) or (2))? If "Yes," provide detail in <b>Part VI</b> .		
b Did one or more disqualified persons (as defined in line 9a) hold a controlling interest in any entity in which the supporting organization had an interest? If "Yes," provide detail in <b>Part VI</b> .		
c Did a disqualified person (as defined in line 9a) have an ownership interest in, or derive any personal benefit from, assets in which the supporting organization also had an interest? If "Yes," provide detail in <b>Part VI</b> .		
10a Was the organization subject to the excess business holdings rules of section 4943 because of section 4943(f) (regarding certain Type II supporting organizations, and all Type III non-functionally integrated supporting organizations)? If "Yes," answer 10b below.		
b Did the organization have any excess business holdings in the tax year? (Use Schedule C, Form 4720, to determine whether the organization had excess business holdings)		



**Part IV Supporting Organizations** (continued)

		Yes	No
<b>11</b>	Has the organization accepted a gift or contribution from any of the following persons?		
<b>a</b>	A person who directly or indirectly controls, either alone or together with persons described in (b) and (c) below, the governing body of a supported organization?		
<b>b</b>	A family member of a person described in (a) above?		
<b>c</b>	A 35% controlled entity of a person described in (a) or (b) above? If "Yes" to a, b, or c, provide detail in <b>Part VI</b> .		

**Section B. Type I Supporting Organizations**

		Yes	No
<b>1</b>	Did the directors, trustees, or membership of one or more supported organizations have the power to regularly appoint or elect at least a majority of the organization's directors or trustees at all times during the tax year? If "No," describe in <b>Part VI</b> how the supported organization(s) effectively operated, supervised, or controlled the organization's activities. If the organization had more than one supported organization, describe how the powers to appoint and/or remove directors or trustees were allocated among the supported organizations and what conditions or restrictions, if any, applied to such powers during the tax year.		
<b>2</b>	Did the organization operate for the benefit of any supported organization other than the supported organization(s) that operated, supervised, or controlled the supporting organization? If "Yes," explain in <b>Part VI</b> how providing such benefit carried out the purposes of the supported organization(s) that operated, supervised, or controlled the supporting organization.		

**Section C. Type II Supporting Organizations**

		Yes	No
<b>1</b>	Were a majority of the organization's directors or trustees during the tax year also a majority of the directors or trustees of each of the organization's supported organization(s)? If "No," describe in <b>Part VI</b> how control or management of the supporting organization was vested in the same persons that controlled or managed the supported organization(s).		

**Section D. All Type III Supporting Organizations**

		Yes	No
<b>1</b>	Did the organization provide to each of its supported organizations, by the last day of the fifth month of the organization's tax year, (i) a written notice describing the type and amount of support provided during the prior tax year, (ii) a copy of the Form 990 that was most recently filed as of the date of notification, and (iii) copies of the organization's governing documents in effect on the date of notification, to the extent not previously provided?		
<b>2</b>	Were any of the organization's officers, directors, or trustees either (i) appointed or elected by the supported organization(s) or (ii) serving on the governing body of a supported organization? If "No," explain in <b>Part VI</b> how the organization maintained a close and continuous working relationship with the supported organization(s).		
<b>3</b>	By reason of the relationship described in (2), did the organization's supported organizations have a significant voice in the organization's investment policies and in directing the use of the organization's income or assets at all times during the tax year? If "Yes," describe in <b>Part VI</b> the role the organization's supported organizations played in this regard.		

**Section E. Type III Functionally Integrated Supporting Organizations**

<b>1</b>	Check the box next to the method that the organization used to satisfy the Integral Part Test during the year (see instructions)		
<b>a</b>	<input type="checkbox"/> The organization satisfied the Activities Test. Complete <b>line 2</b> below.		
<b>b</b>	<input type="checkbox"/> The organization is the parent of each of its supported organizations. Complete <b>line 3</b> below.		
<b>c</b>	<input type="checkbox"/> The organization supported a governmental entity. Describe in <b>Part VI</b> how you supported a government entity (see instructions).		
<b>2</b>	Activities Test. Answer (a) and (b) below.		
<b>a</b>	Did substantially all of the organization's activities during the tax year directly further the exempt purposes of the supported organization(s) to which the organization was responsive? If "Yes," then in <b>Part VI</b> identify those supported organizations and explain how these activities directly furthered their exempt purposes, how the organization was responsive to those supported organizations, and how the organization determined that these activities constituted substantially all of its activities.		
<b>b</b>	Did the activities described in (a) constitute activities that, but for the organization's involvement, one or more of the organization's supported organization(s) would have been engaged in? If "Yes," explain in <b>Part VI</b> the reasons for the organization's position that its supported organization(s) would have engaged in these activities but for the organization's involvement.		
<b>3</b>	Parent of Supported Organizations. Answer (a) and (b) below.		
<b>a</b>	Did the organization have the power to regularly appoint or elect a majority of the officers, directors, or trustees of each of the supported organizations? Provide details in <b>Part VI</b> .		
<b>b</b>	Did the organization exercise a substantial degree of direction over the policies, programs, and activities of each of its supported organizations? If "Yes," describe in <b>Part VI</b> the role played by the organization in this regard.		

**Part V Type III Non-Functionally Integrated 509(a)(3) Supporting Organizations**

- 1  Check here if the organization satisfied the Integral Part Test as a qualifying trust on Nov 20, 1970 (explain in Part VI). See instructions. All other Type III non-functionally integrated supporting organizations must complete Sections A through E

Section A—Adjusted Net Income		(A) Prior Year	(B) Current Year (optional)
1 Net short-term capital gain	1		
2 Recoveries of prior-year distributions	2		
3 Other gross income (see instructions)	3		
4 Add lines 1 through 3.	4		
5 Depreciation and depletion	5		
6 Portion of operating expenses paid or incurred for production or collection of gross income or for management, conservation, or maintenance of property held for production of income (see instructions)	6		
7 Other expenses (see instructions)	7		
<b>8 Adjusted Net Income</b> (subtract lines 5, 6, and 7 from line 4)	<b>8</b>		
Section B—Minimum Asset Amount		(A) Prior Year	(B) Current Year (optional)
1 Aggregate fair market value of all non-exempt-use assets (see instructions for short tax year or assets held for part of year):			
a Average monthly value of securities	1a		
b Average monthly cash balances	1b		
c Fair market value of other non-exempt-use assets	1c		
d Total (add lines 1a, 1b, and 1c)	1d		
e Discount claimed for blockage or other factors (explain in detail in Part VI)			
2 Acquisition indebtedness applicable to non-exempt-use assets	2		
3 Subtract line 2 from line 1d.	3		
4 Cash deemed held for exempt use. Enter 1-1/2% of line 3 (for greater amount, see instructions).	4		
5 Net value of non-exempt-use assets (subtract line 4 from line 3)	5		
6 Multiply line 5 by 0.35	6		
7 Recoveries of prior-year distributions	7		
<b>8 Minimum Asset Amount</b> (add line 7 to line 6)	<b>8</b>		
Section C—Distributable Amount			Current Year
1 Adjusted net income for prior year (from Section A, line 8, Column A)	1		
2 Enter 85% of line 1	2		
3 Minimum asset amount for prior year (from Section B, line 8, Column A)	3		
4 Enter greater of line 2 or line 3	4		
5 Income tax imposed in prior year	5		
<b>6 Distributable Amount.</b> Subtract line 5 from line 4, unless subject to emergency temporary reduction (see instructions)	<b>6</b>		
7 <input type="checkbox"/> Check here if the current year is the organization's first as a non-functionally integrated Type III supporting organization (see instructions).			

**Part V Type III Non-Functionally Integrated 509(a)(3) Supporting Organizations (continued)**

Section D—Distributions		Current Year		
1	Amounts paid to supported organizations to accomplish exempt purposes			
2	Amounts paid to perform activity that directly furthers exempt purposes of supported organizations, in excess of income from activity			
3	Administrative expenses paid to accomplish exempt purposes of supported organizations			
4	Amounts paid to acquire exempt-use assets			
5	Qualified set-aside amounts (prior IRS approval required)			
6	Other distributions (describe in Part VI) See instructions			
7	<b>Total annual distributions.</b> Add lines 1 through 6			
8	Distributions to attentive supported organizations to which the organization is responsive (provide details in Part VI) See instructions.			
9	Distributable amount for 2018 from Section C, line 6			
10	Line 8 amount divided by line 9 amount			
Section E—Distribution Allocations (see instructions)		(i) Excess Distributions	(ii) Underdistributions Pre-2018	(iii) Distributable Amount for 2018
1	Distributable amount for 2018 from Section C, line 6			
2	Underdistributions, if any, for years prior to 2018 (reasonable cause required—explain in Part VI) See instructions			
3	Excess distributions carryover, if any, to 2018			
a	From 2013			
b	From 2014			
c	From 2015			
d	From 2016			
e	From 2017			
f	<b>Total</b> of lines 3a through e			
g	Applied to underdistributions of prior years			
h	Applied to 2018 distributable amount			
i	Carryover from 2013 not applied (see instructions)			
j	Remainder Subtract lines 3g, 3h, and 3i from 3f.			
4	Distributions for 2018 from Section D, line 7. \$			
a	Applied to underdistributions of prior years			
b	Applied to 2018 distributable amount			
c	Remainder Subtract lines 4a and 4b from 4			
5	Remaining underdistributions for years prior to 2018, if any. Subtract lines 3g and 4a from line 2 For result greater than zero, explain in Part VI. See instructions.			
6	Remaining underdistributions for 2018 Subtract lines 3h and 4b from line 1 For result greater than zero, explain in Part VI. See instructions.			
7	<b>Excess distributions carryover to 2019.</b> Add lines 3j and 4c			
8	Breakdown of line 7			
a	Excess from 2014			
b	Excess from 2015			
c	Excess from 2016			
d	Excess from 2017			
e	Excess from 2018			



**SCHEDULE I  
(Form 990)**

Department of the Treasury  
Internal Revenue Service

**Grants and Other Assistance to Organizations,  
Governments, and Individuals in the United States**

Complete if the organization answered "Yes" on Form 990, Part IV, line 21 or 22.

▶ Attach to Form 990.

▶ Go to [www.irs.gov/Form990](http://www.irs.gov/Form990) for the latest information.

OMB No 1545-0047

**2018**

**Open to Public  
Inspection**

Name of the organization: United Way of Nodaway County Employer identification number: 51-0795791

**Part I General Information on Grants and Assistance**

- Does the organization maintain records to substantiate the amount of the grants or assistance, the grantees' eligibility for the grants or assistance, and the selection criteria used to award the grants or assistance?  Yes  No
- Describe in Part IV the organization's procedures for monitoring the use of grant funds in the United States.

**Part II Grants and Other Assistance to Domestic Organizations and Domestic Governments.** Complete if the organization answered "Yes" on Form 990, Part IV, line 21, for any recipient that received more than \$5,000. Part II can be duplicated if additional space is needed

1 (a) Name and address of organization or government	(b) EIN	(c) IRC section (if applicable)	(d) Amount of cash grant	(e) Amount of non-cash assistance	(f) Method of valuation (book, FMV, appraisal, other)	(g) Description of noncash assistance	(h) Purpose of grant or assistance
(1) The Ministry Center 971 S. Main, Maryville, MO 64468	43-1840277		10,000				
(2) Nodaway County Senior Center 1210 E. First, Maryville, MO 64468	43-1437747		22,300				
(3) .....							
(4) .....							
(5) .....							
(6) .....							
(7) .....							
(8) .....							
(9) .....							
(10) .....							
(11) .....							
(12) .....							

- Enter total number of section 501(c)(3) and government organizations listed in the line 1 table
- Enter total number of other organizations listed in the line 1 table



