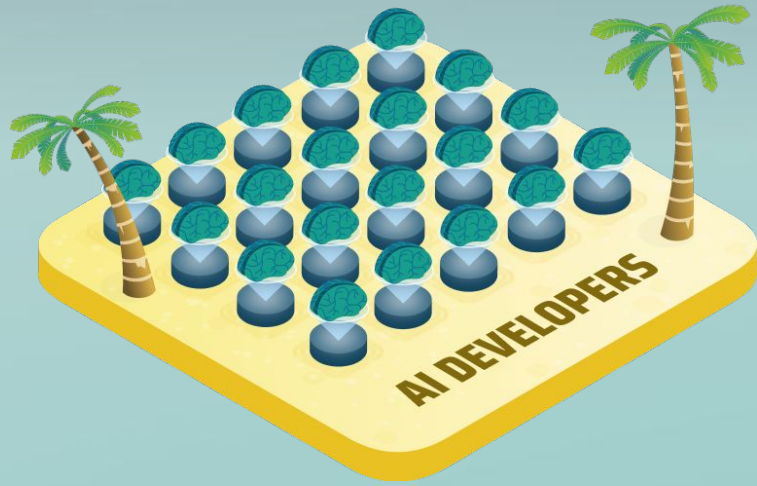




Leading the AI revolution for medical imaging and diagnostics

All healthcare providers want to adopt AI-assisted imaging. However, a lack of a neutral platform, a distributed landscape with thousands of algorithms and a very complex integration process have kept AI out of healthcare institutions. Until now...



The amount of AI solutions is growing exponentially.

- ✘ For the past six years, the number of AI companies increased from 14 to over **300 companies with thousands of algorithms in 2021.**
- ✘ Most AI providers worldwide **don't have the resources** or the required data to reach and integrate with hundreds of thousands of hospitals globally.

The radiologist shortage is increasing.

- ✘ Market radiologist shortage is putting **patient care at high risk**
- ✘ Radiologists do not have any market access, hence they **miss out on thousands of newly** available AI algorithms.
- ✘ Radiologists currently have access only to "built-in," aging AI solutions of the existing equipment in their hospitals, often **no** AI access at all.



Only 5% of hospitals are currently adopting AI algorithms for imaging.

- ✘ Integrating different solutions is painful, **prohibitively expensive**, and drastically limits access to modern, high-quality algorithms.
- ✘ **Different business models** and commercial terms exasperate the issue further administratively.

A radiologists best buddy, a patient's best news

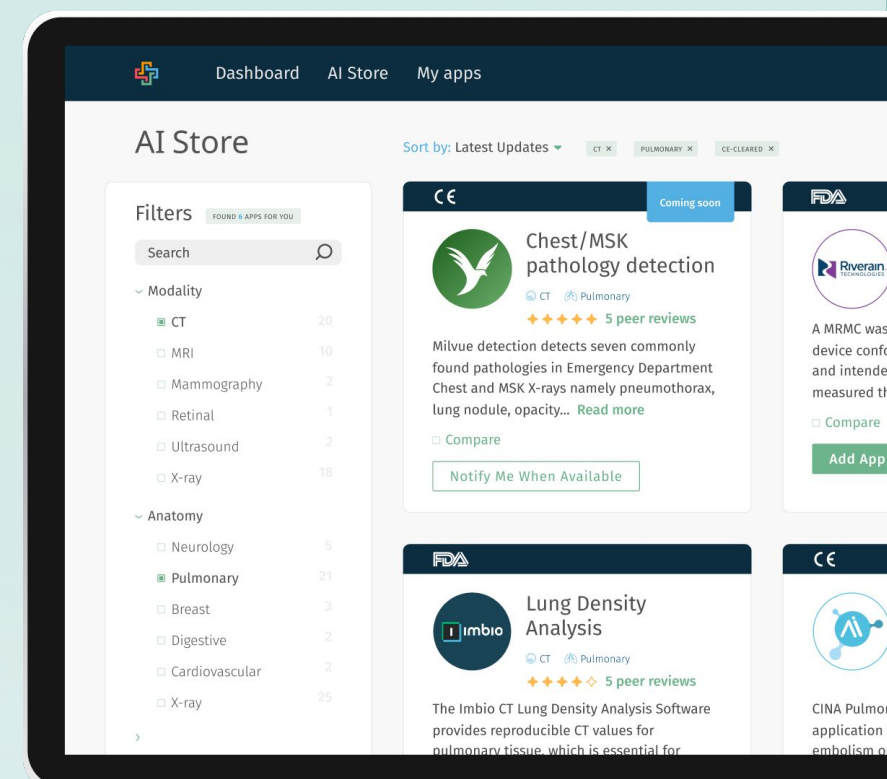
TestDynamics brings medical imaging AI algorithms and solutions right into the mainstream workflow. Our platform offers hospitals and physicians a one-stop access to a widerange of AI models. We improve patient care quality, reduce healthcare costs and lower malpractice risk.

For Hospitals and Doctors

- ✓ Seamless integration into the imaging workflow
- ✓ Reduced diagnostic error rates and improved clinical outcomes
- ✓ Increases radiologist productivity
- ✓ Increases patient satisfaction
- ✓ Increases capacity of staff and reduces average cost per diagnosis
- ✓ Reduces legal costs and malpractice lawsuits
- ✓ Empowers less experienced doctors to deal with complex diagnostics
- ✓ Eliminates the need for difficult vendor negotiations, complex business models and payment disputes

For AI Solution Vendors

- ✓ Gain storefront access to a consolidated market and scalable revenue model
- ✓ Allows market access to startups and academic vendors with little or no marketing capital
- ✓ Singular integration workflow saves enormous integration costs and reduces complexity
- ✓ Single contract eliminates commercial negotiations and complex business models
- ✓ Allows vendors to focus on technology and not on expensive commercial activities
- ✓ Platform feedback allows for training of algorithms



- ✓ Full imaging smart workflow integration
- ✓ Appstore like simplicity with user friendly features which allow discovery, comparison, integration and conformance with statutory requirements
- ✓ Various dashboards for usage and costs
- ✓ Peer reviews and vendor support
- ✓ ML driven matching engine

"It's about time patients actually benefit from cutting edge AI. Let's bring the future today"

Dr. Eli Basse, M.D. - Co-Founder

The Market Ecosystem

Other solutions

- ✘ Usually a vendor locked addon
- ✘ Mostly aging AI algorithms
- ✘ Limited communication between developers and users;
- ✘ Lack of seamless integration;
- ✘ No easy way to compare solutions;

Global Digital Health Market

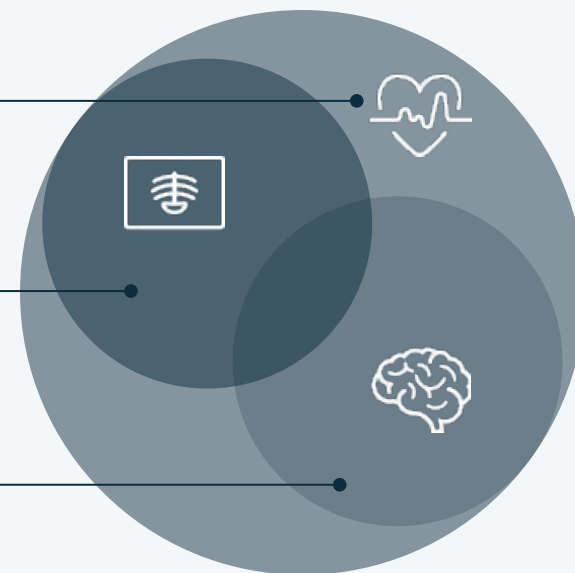
\$106B in 2019 → \$640B in 2026

Global Medical Imaging Market

\$20.1B in 2019 → \$52.6B in 2026

Global AI in Healthcare Market

\$4.9B in 2019 → \$45.2B in 2026



Team and Advisors



**Lior Eshel,
Co-Founder & CEO**

Technical entrepreneur with a strong focus on electro-optics and mechanical/Hardware engineering. Over 13 years of experience developing complex technological devices. Lior has the privilege to help early-stage startups & corporates. A worldwide acceleration programs mentor with a global healthcare network, angel investor.



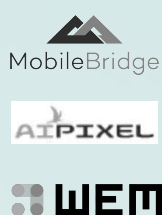
**Dr. Eliezer Basse, M.D.,
Co-Founder & CMO**

Graduated from Tel-Aviv University, Sackler school of medicine and an MBA from the University of South Florida. Dr. Basse specializes in general surgery and emergency medicine. Served 20 years as a Chairman responsible for all the clinical programs and patient care quality. Dr. Basse was the VP of Medical Affairs, involved with emergency management in the state of Michigan.



**Eyal Oster,
Strategic Advisor**

A strategist entrepreneur brings more than 20 years of leadership roles in technology startups. Recognized as one of the most innovative thought leaders.



Dr. Pressman, Barry, M.D

Dr. Barry Pressman is professor and chair of the Department of Imaging at the S. Mark Taper Foundation Imaging Center at Cedars-Sinai Medical Center in Los Angeles.



**Dr. Goldberg, Ronn,
M.D**

Training in Internal Medicine, Pathology and Medical Imaging along with an MBA from the highly regarded Rotman School of Business at the University of Toronto



**Dr. Hiram Shaish,
M.D**

Assistant professor of radiology and associate division chief of body and thoracic imaging at Columbia University Medical Center. His research focuses on machine learning.



**Prof. Ofer Hadar,
AI & ML Advisor**

Expertise in image processing, AI & ML. Led the Communication Systems Engineering department in Ben-Gurion University, Israel. A fellow Professor in UCLA, CREOL, FL and the Technion.



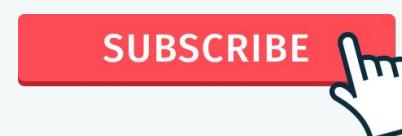
Business Model

Our flat fee subscription based model is suitable for various sizes of healthcare institutions and allows AI companies to gain storefront access to a consolidated market and a scalable revenue model.

TestDynamics charges a flat commission from the vendors.

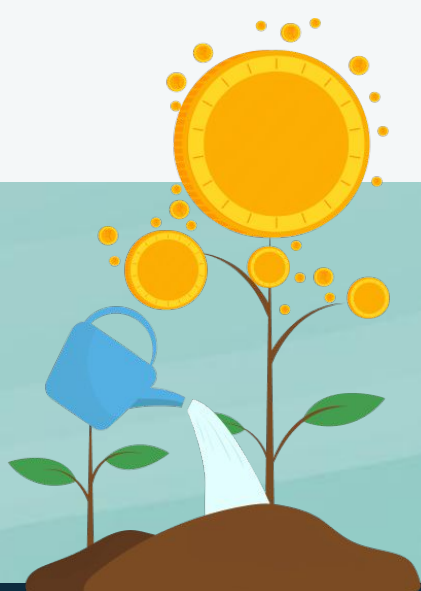


Range of subscription choices



Raising a Seed Round

We are in the process of raising \$1M in a seed (SAFE) round. First substantial milestones planned: MVP product release, initial successful pilots execution, and the beginning of a new era in imaging.



CEO, Lior Eshel

+972-544231312

info@testdynamics.net

www.testdynamics.net
Coming soon!