
Holy Family Hospital



Holy Family Hospital

St. John of God

About

The Holy Family Hospital of Nazareth was founded by the brothers of St. John of God - Fatebenefratelli.

The Hospital is a non profit organization and is a member of the Italian association in the collaboration with the medical order of Saint John of God for sick people in distant countries (AFML).

Our values



Excellence



Respect



Hospitality



Justice



Compassion



OUR HISTORY

Shining through the history



1882

Opening of the hospital in Nazareth
With a room for ambulatory patients

The Israeli ministry of health
submitted the hospital as a public
hospital

1959



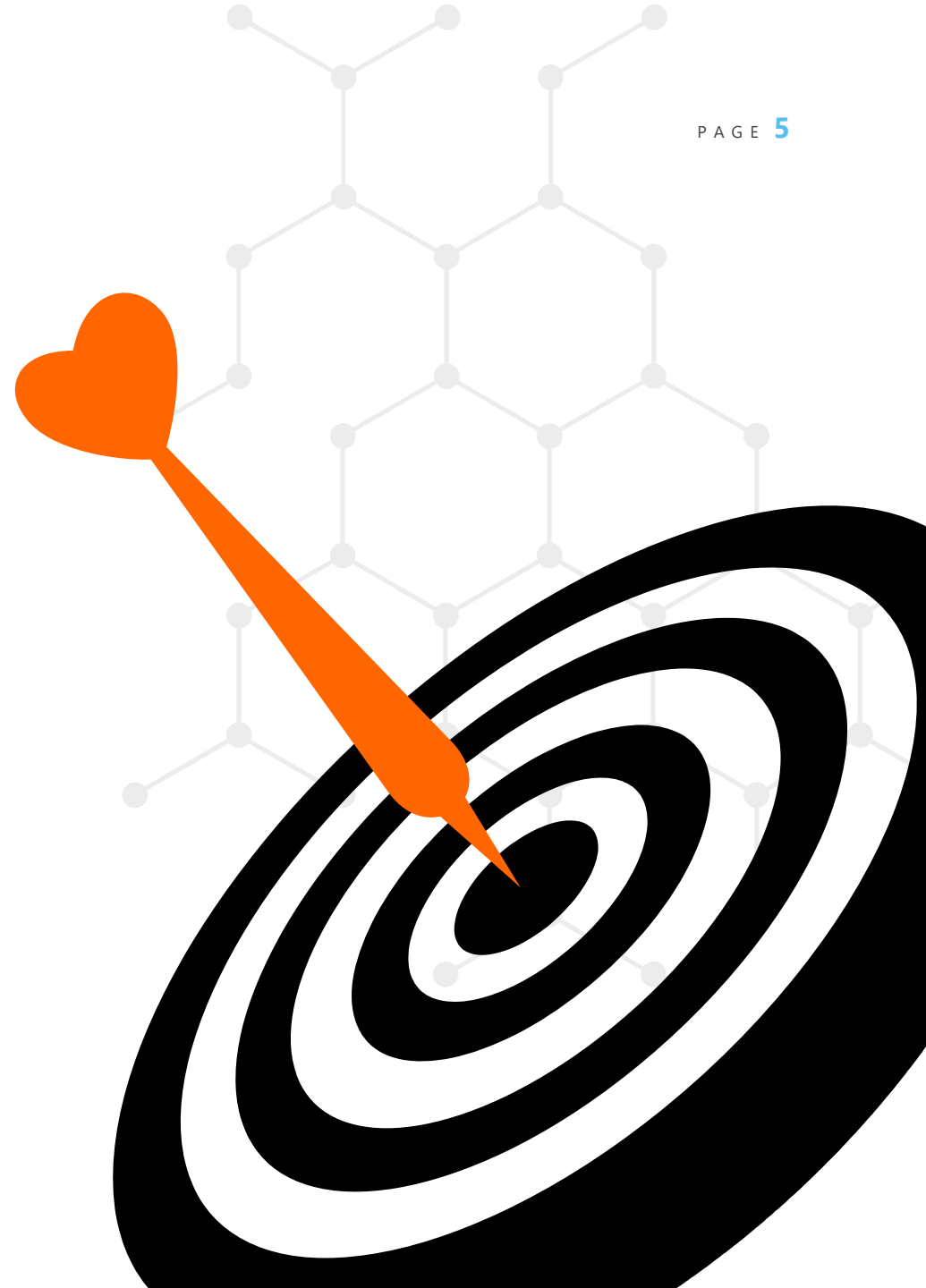
2020

The hospital at its peak.

Vision and Mission

“To treat our patients with a compassionate and patient-centered health care, enriched by professional excellence, and commitment”

“To deliver the most comprehensive medical care”



Staff and services

Our hospital in numbers

Medical staff and personnel	No.
Physicians Specialists and consultants	120
Nurses	245
Nursing assistants	74
Allied health professions	70
Technicians & laboratory technicians	60
Maintenance, clerks, archives, housekeeping, supplies and others	200

Medical services

Allergy	Gynecology
Anesthesiology	Hepatology
Bariatric	Imaging & Radiology
Cancer	Intensive care medicine
Cardiovascular	Internal medicine
Chronic ventilation	Labor & Delivery
Diabetes	Pulmonology
Dialysis	Neonatology
Emergency medicine	Nephrology
Gastroenterology	Orthopedics
General surgery	Rehabilitation
Gerontology	Urology

Emergency Department (ED)

Description

Nursing Triage room

17 bed arena

2 bed Trauma room



Emergency Department



Internal medicine

- ▶ Internal medicine (29 beds)
- ▶ Sub-specialty units and services:
 - ▶ Cardiology
 - ▶ Nephrology
 - ▶ Gastroenterology
 - ▶ Liver disease
 - ▶ Pulmonology
 - ▶ Infectious diseases
 - ▶ Allergy and immunology
 - ▶ Neurology
 - ▶ Hematology
- ▶ 12 Seniors and residents
- ▶ Full residency program
- ▶ Training for post-graduates M.D.
- ▶ Faculty of medicine affiliation

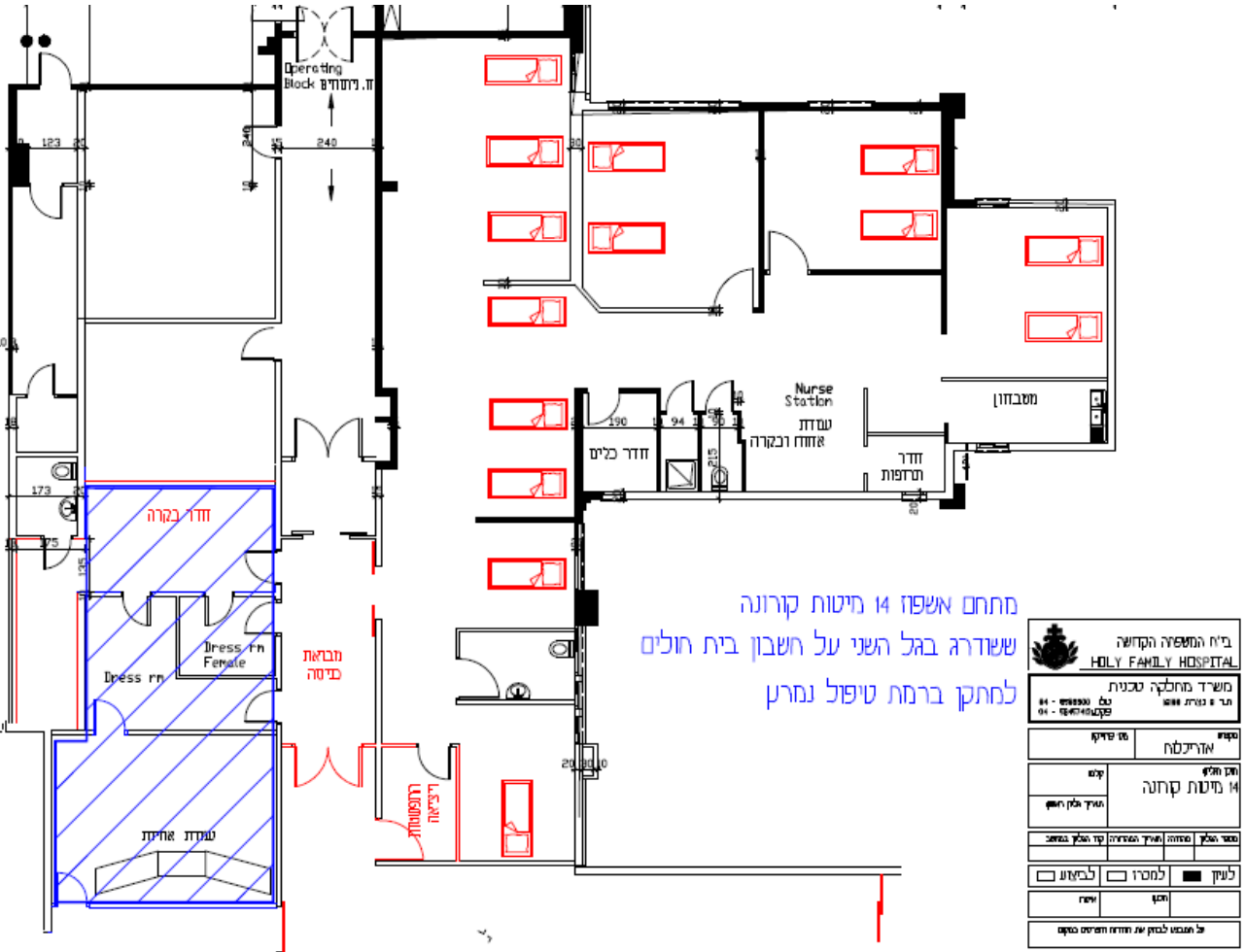


Intensive care unit

- ▶ 3 general/2 cardiac beds
- ▶ 3 Seniors physicians



Corona Second Complex





CORONA DEPT.



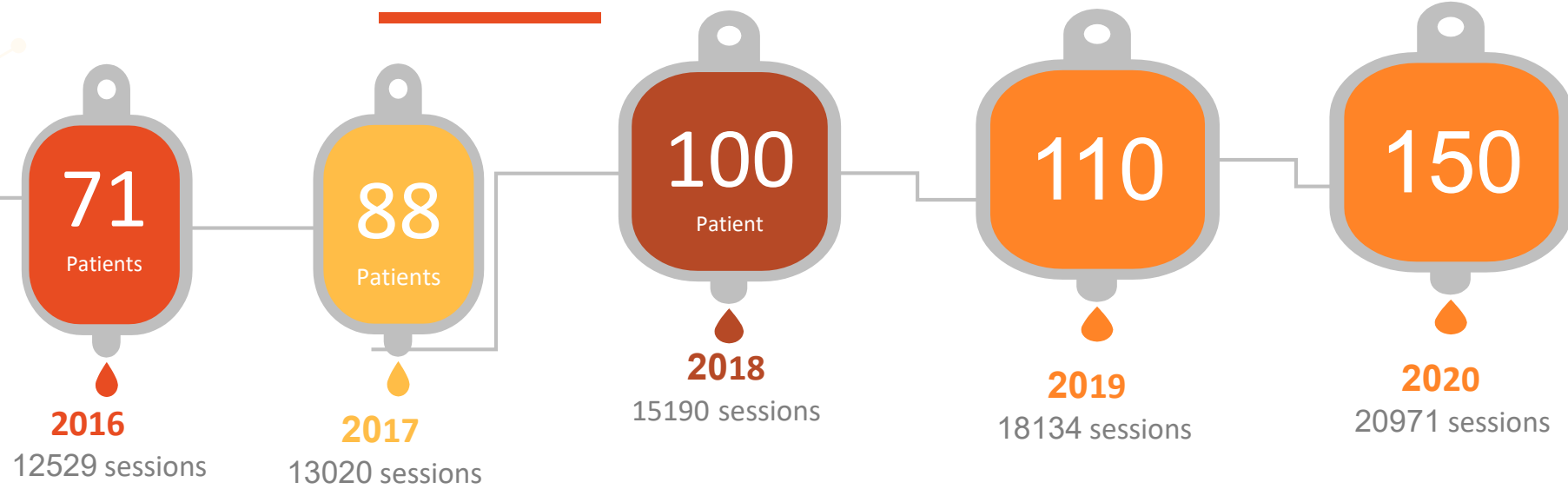
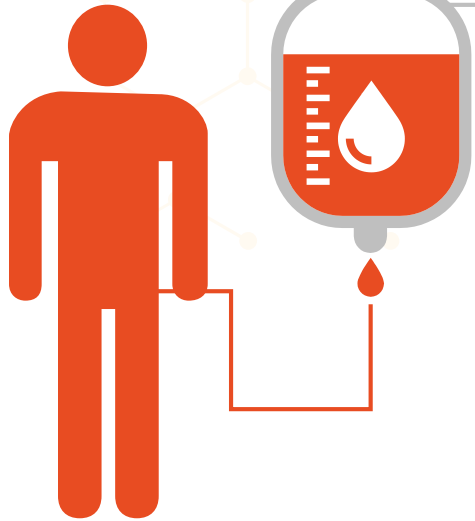
Gastroenterology unit

Description

- 14 physicians, 20 nurses
- 3 procedure rooms
- Gastroscopy, Colonoscopy
- Endoscopic US
- Endoscopic surgery
- GI-Tumor boards
- GI-Clinics
- ERCP

Nephrology & Hemodialysis

Patient



- 500 s.q.m.
- 28 Fresenius 5008s-hdf machines
- 3 Senior physicians
- **New Peritoneal dialysis**

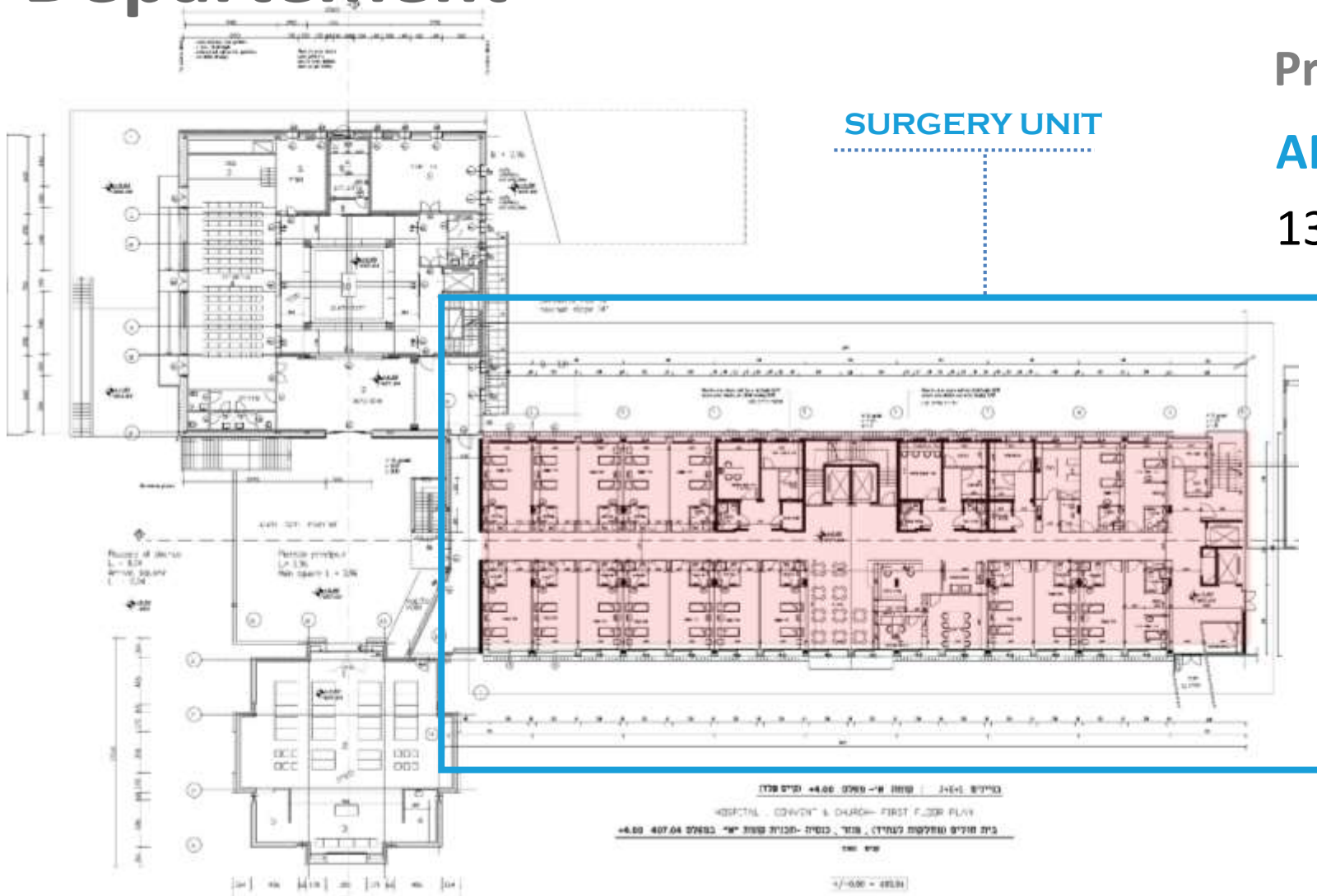


Peritoneal dialysis

- Established in 2019
- 35 PD patients



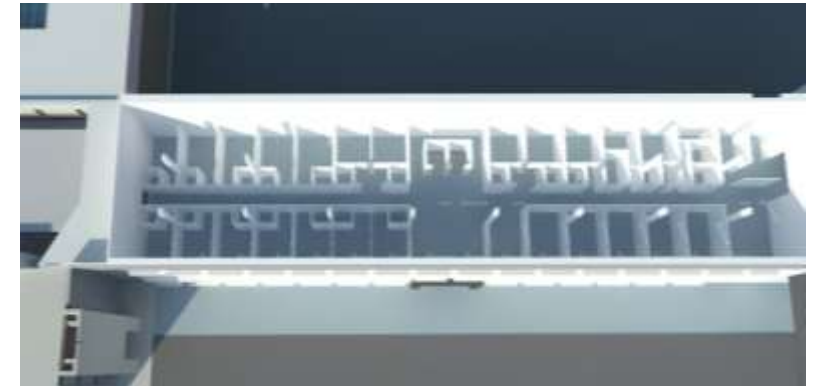
New Surgery Department



Project Details

AREA SIZE

1300 Square meter for construction



General Surgery department

About

6 seniors,

General surgery

Colorectal Surgery and tumor board

Breast surgery and tumor board

Bariatric surgery

Israeli Ministry of health

Orthopedic surgery department

Staff:

7 seniors, 6 interns

Partial residency program

Activity spectrum:

- Shoulder surgery
- Joint reconstructive surgery
- Spine surgery
- Hand surgery
- Emergency surgery and trauma

Urology

2 seniors

Main Operations:

- TURP
- Cystoscopy
- Ureteroscopy diagnostic & therapeutic



The new surgical theater facility (2019)

Description

1500 s.q.m

4 operating theatres

Post Anesthetic Care Unit (8 beds)



Gynecology & Obstetrics

- ▶ 24 Seniors and residents
- ▶ Partial residency program (3 years)
- ▶ Training for post-graduates M.D.
- ▶ Faculty of medicine affiliation
- ▶ 36 beds
- ▶ 11 High Risk Beds
- ▶ 5 delivery rooms





New Maternity and Birthing Facility Ward

- 1500 s.q.m.
- 5 birthing suits
- Maternity emergency care and Monitoring Rooms
- Ultrasound imaging Unit

Maria Bambina Clinic

Pregnancy Clinic

- The Maria Bambina high risk pregnancy unit
- Obstetric Sonography unit
- Pelvic medicine and genitourinary reconstruction surgery unit



Description

Neonatology

- 9 neonatal intensive care beds
- 6 advanced newborn care beds
- 21 newborn nursery beds
- 3 Neonatal Specialist Doctors
- 5 Pediatricians

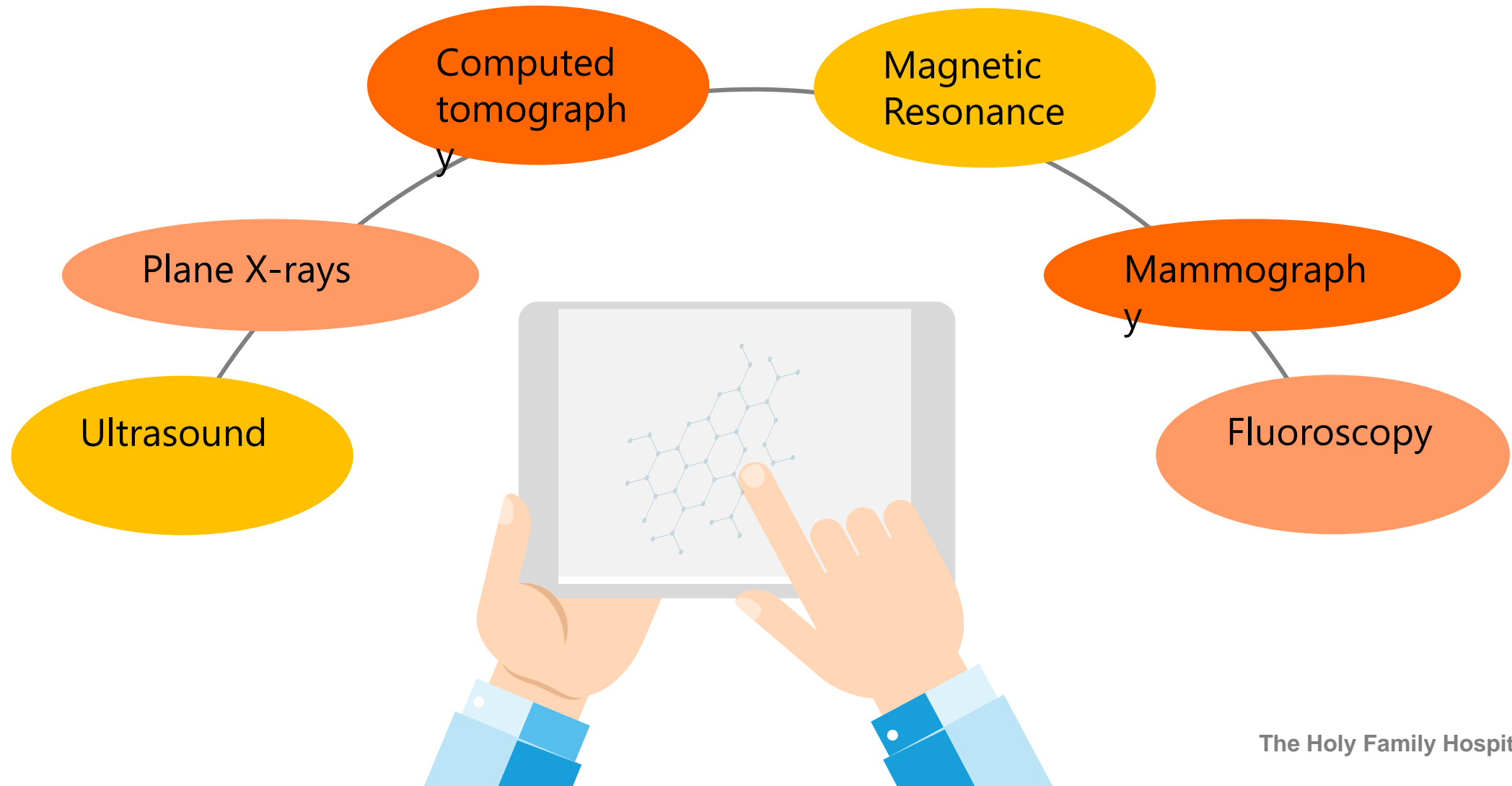
Partial residency program – in progress



The New Neonatology



Imaging and radiology



Breast center

About

- ▶ Mammography (Tomosynthesis)
- ▶ Breast US
- ▶ Breast biopsy
- ▶ Breast MRI

Exams:





The MRI unit



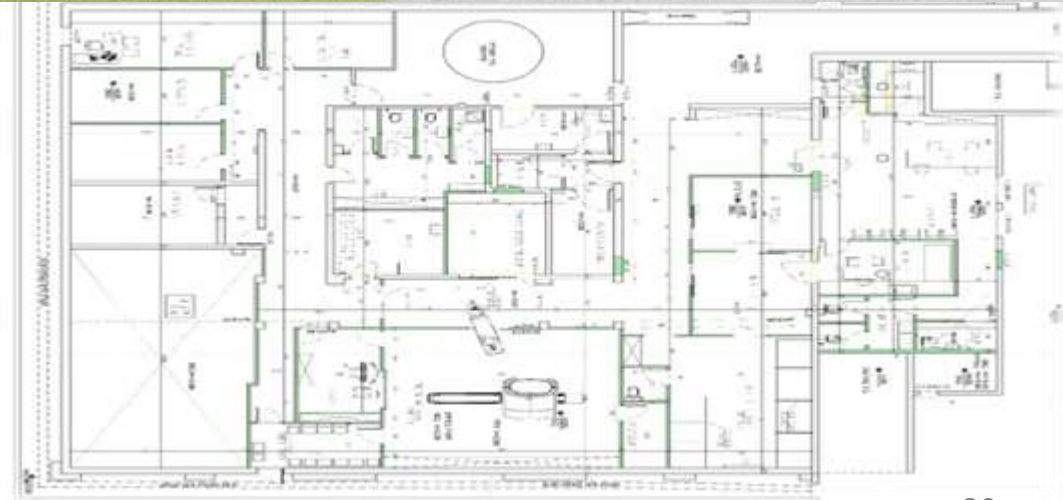
Pet CT - Scan



Project Details

AREA SIZE

500 Square meter for construction



The Suad & Joseph Shomar Oncology unit

About

4 Oncology consults

Day care therapy (7 POC)

Tumor boards

Cytotoxic drug preparation pharmacy



Long-term mechanical ventilation & Gerontology (complex) departments

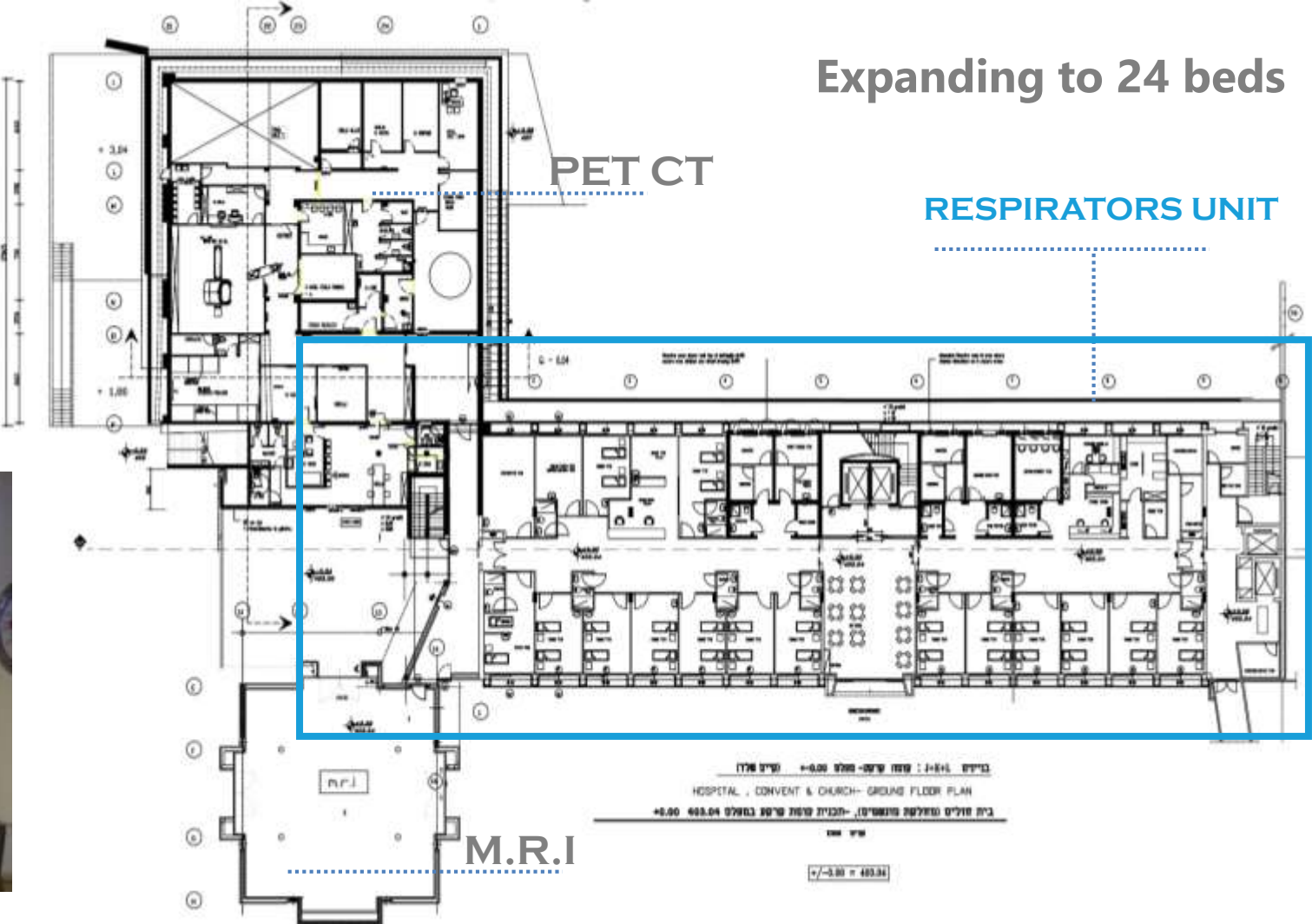
About
19/23 beds
2 Seniors
3 Interns
2 consultants
29 nurses



New Long-term Ventilation department

AREA SIZE

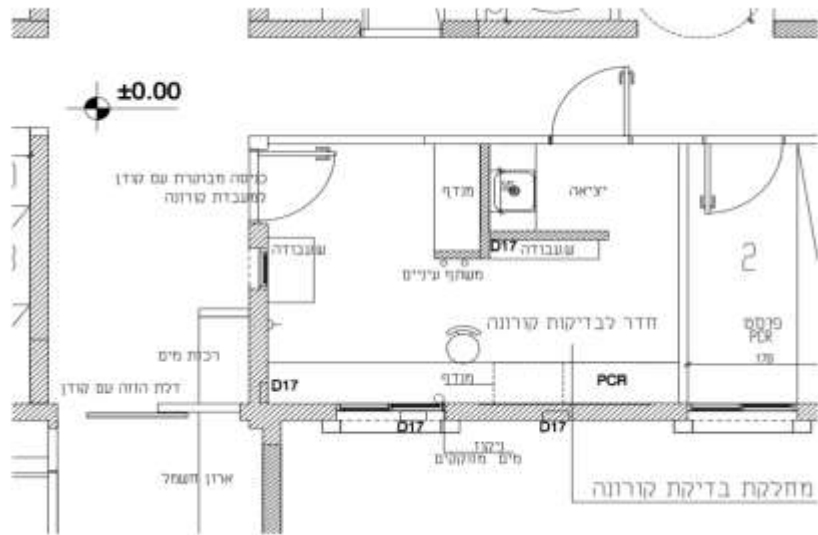
1300 Square meter for construction



Expanding to 24 beds

Corona Laboratory

- Covid19 lab testing started at 01/09/2020
- Insulated and adapted structure
- Performing tests by GeneXpert
- From the beginning of the epidemic 1800 tests were taken



Medical school and research

01 Academics



Affiliation to the Faculty of medicine in the Galilee

Basic science and translational medicine: Breast cancer, Obstetrics ,Viral hepatitis ,NAFLD, Respiratory disease



Research institute 02

03 Teaching departments



Internal medicine, Gynecology and Obstetrics, General surgery, Urology, Gastroenterology, Nephrology, ICU



PROJECTS IN THE PLANNING PROCESS



Histology Lab.

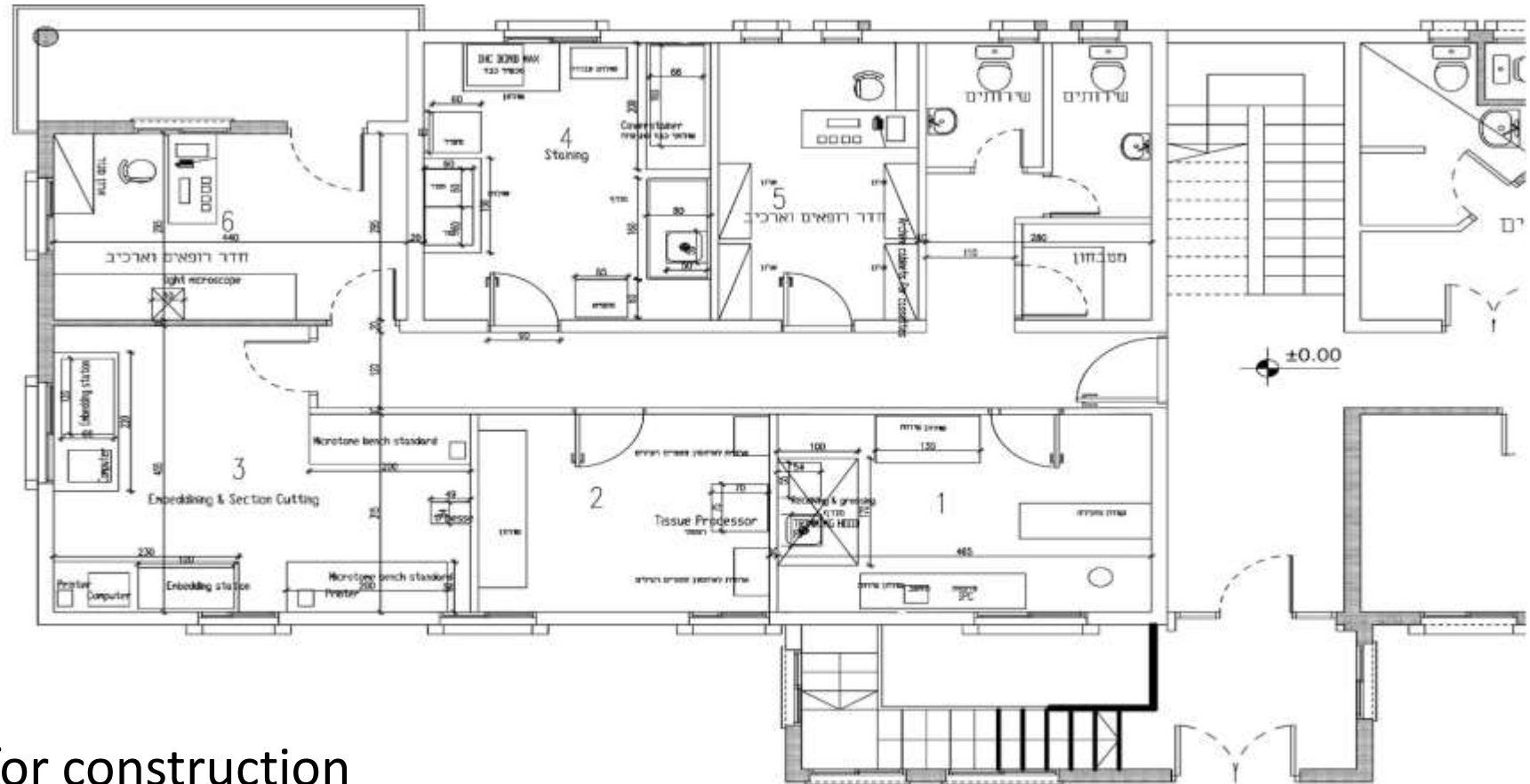


Central Sterile services



New ER department

Central Sterile Services department



Project Details

AREA SIZE

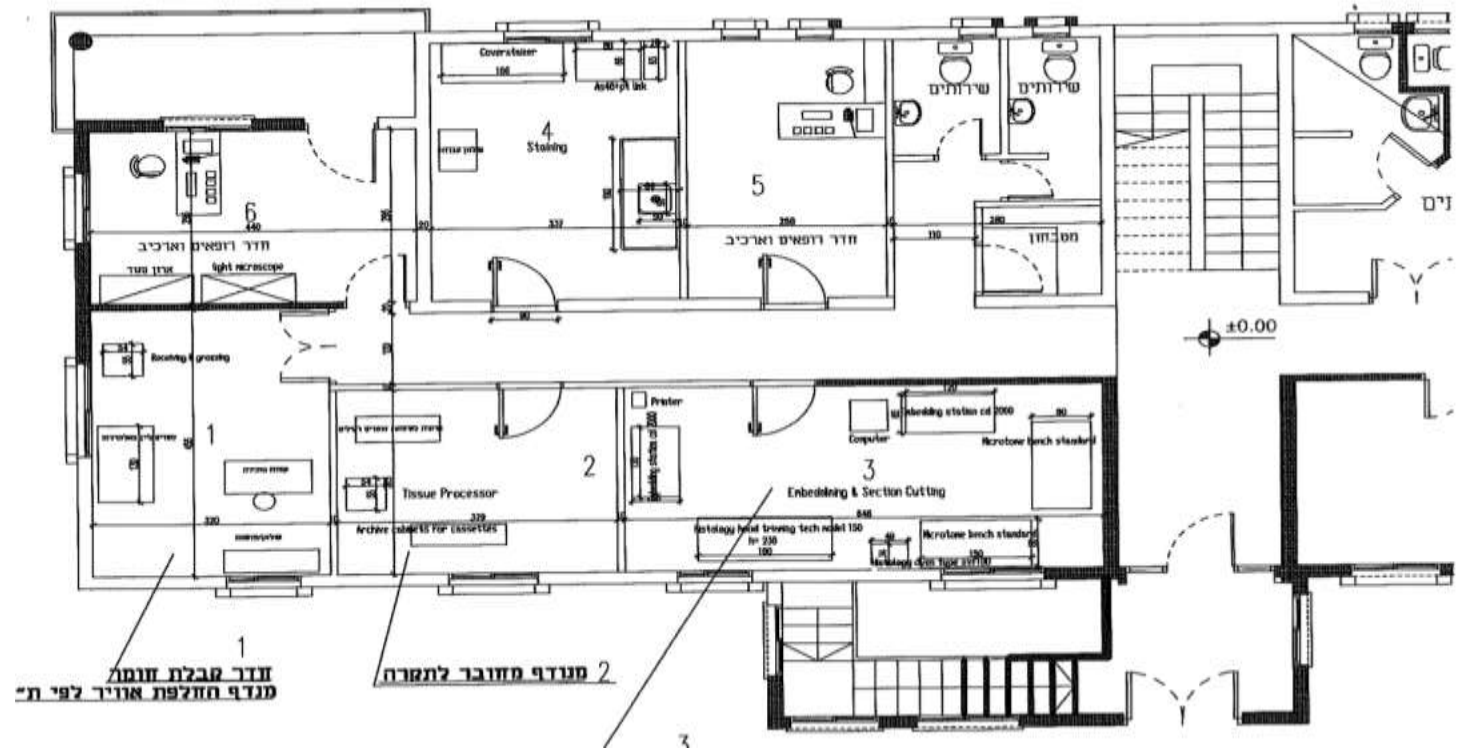
200 Square meter for construction

Histology Laboratory

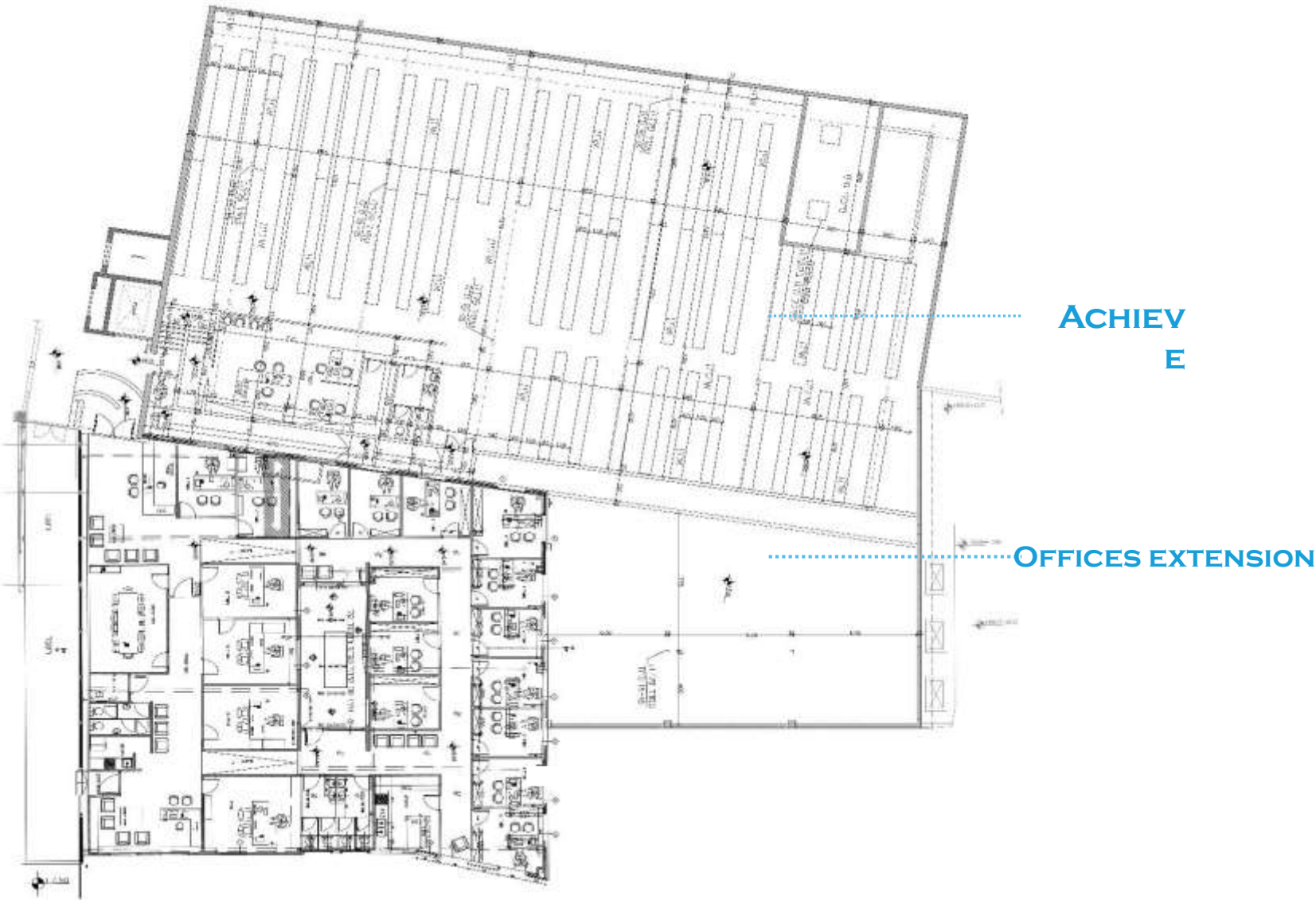
Project Details

AREA SIZE

Square meter for construction



Archive and offices extension



Project Details

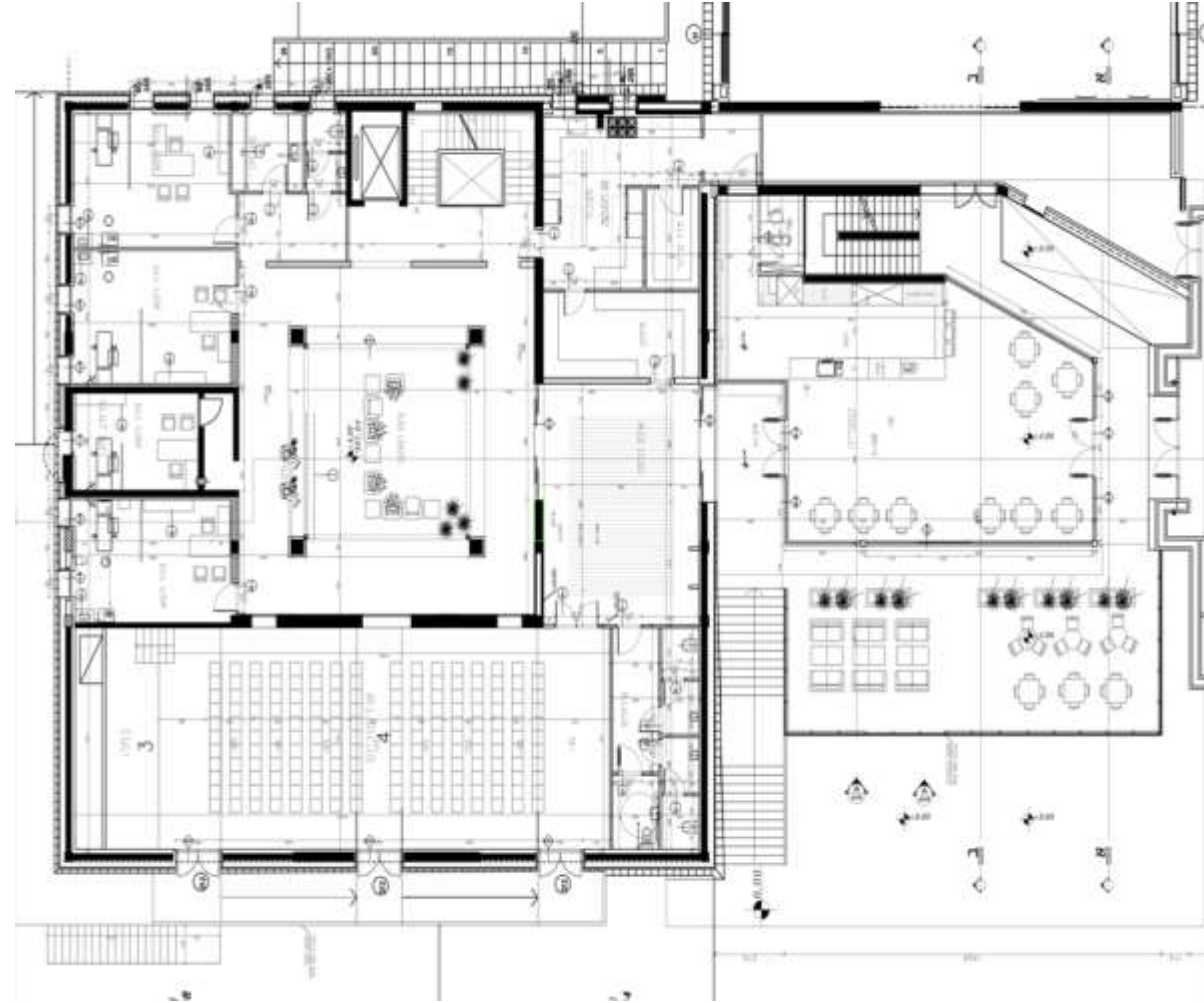
AREA SIZE
1200 SQ,M

Cafeteria and Auditorium

Project Details

AREA SIZE

800 SQ,M



Committed to serve and treat



Outpatient clinics

